

Art in Motion!

Art workshops last one hour. Additional directed group activities center around Hopewell's current exhibit., a Kentucky scavenger hunt, and/or learning center for a 2 hour block of time.

♦ Exhibits - Fall 2015:

Paris City Schools: 150 Years of Academic Excellence 9/13/15—10/11/15 & *Creative Harvest Art Display* 10/16/15-12/13/15

♦ Kentucky Scavenger Hunt in the History

Hall Exhibit for students 3rd grade and up. The **Hunt** helps students link regional history with the history of Bourbon County & KY.

♦ Long Ago in Bourbon

a learning center space where students explore Main Street, Life on the Farm & one- room school education of 100 years ago.



KDE Curriculum Connections:
Arts & Humanities Program
Review Demonstrators:
Curriculum & Instruction

Demonstrator 1: Student
Access. The arts program
offers individual students the
opportunity to develop their own

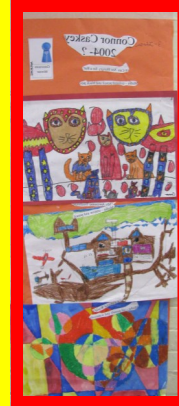
talents in the three processes of creating, performing and responding to the arts with the support of teachers, beyond the regular classroom.

Program of Studies Arts and Humanities Skills
& Concepts AH-P-4-SA-S-VA1,VA2,VA3; AH-
P-4-5-IAA-S-4.

Art Reaches Out!

*You Can't Come to Us. . .
we'll come to you!*

Partner with us for
art stations or
custom design an
event for family
nights; afterschool
programs; PTO
meetings. \$.50/
student. Call for
more information.



hopewellmuseum
HISTORIC PARIS-BOURBON COUNTY



800 Pleasant St., Paris, KY. 40361

hopewellmuseum@yahoo.com



www.hopewellmuseum.org 859-987-7274

Wed-Sat 12-5; Sun 2-4;

HPBC/Hopewell Museum



Field Trips & Workshops

Fall 2015



We inspire learning!

Art Workshop Description



Appalachian Quilts : Geometry in Design

Manipulate tangram shapes and discover how they merge into traditional Appalachian quilt designs. Create and name your own paper quilt.

Grades 2-8 \$1 per student

KY Core Content: SS-EP-04-05-2.1.1; RD-EP-04-05-2.0.1. AH-EP-04-05-1.4.1; 2.4.1; 3.4.1; AH-EP-04-05.1.4.2. MA-EP.3.1.2; MA-04-3.1.2; MA-05.3.1.2
DOK 2



Need Field Trip Money?

Funds are available to sponsor 2015-2016 field trips for Bourbon County students to Hopewell Museum. Funds are on a first come basis and provide for bus and driver money plus workshop scholarships. Call or e-mail us for more information!

Find workshop objectives at
[www.hopewellmuseum.org/
educate.html](http://www.hopewellmuseum.org/educate.html)



All workshops incorporate the Elements of Art & the Principles of Design.

Art Workshop Description



Talavera Tile: Functional Color & Sym-

Learn about the culture of Mexico, where Talavera tiles are made & their traditional uses. Use clay to design a 3-D tile then make your own paper tiles to mount for a bright & unified display.

KY Core Content: AH-EP-04-05-1.4.1; AH-04-05-1.4.2; AH-EP-04-05 3.4.1; AH-EP-04-05 4.4.1; AH-04-05-4.4.2; SS-EP-2.1.1; AH-EP-2.1.2;AH-05-2.4.1
DOK 2

**Grades K-8
\$1 per student**

