

In Memory of

Evelyn Dray Johnson

January 4, 1933 — April 14, 1951

Superior in mind and character

Evelyn has joined the "choir

invisible

Of those immortal dead

who live again

In minds made better by

their presence."

The PARISIAN 1951

PARIS HIGH SCHOOL
Paris, Kentucky

LEE KIRKPATRICK
Superintendent

A. B. Georgetown College; M. A.
Columbia University; Graduate
Student Harvard University.



DEDICATION

We, the members of the Senior Class of
1951

wish to dedicate this annual to
MR. RICHARD T. STOFER

Mr. Stofer came to our school in 1949. He entered immediately into the school life. He has helped us not only in our school work but also in our every day life. We, the Seniors of 1951 wish to express our thanks and appreciation for all he has done for the school, for others, and mostly for ourselves.

TRIBUTE TO

MISS ZERELDA NOLAND

The Senior Class of 1951 wishes to honor Miss Zerelda Noland, one of our faculty members who has proven herself an untiring leader.

Having been a member of the teaching staff for several years Miss Noland's influence has made an imprint on each of our lives as well as on those of past graduates of Paris High School.

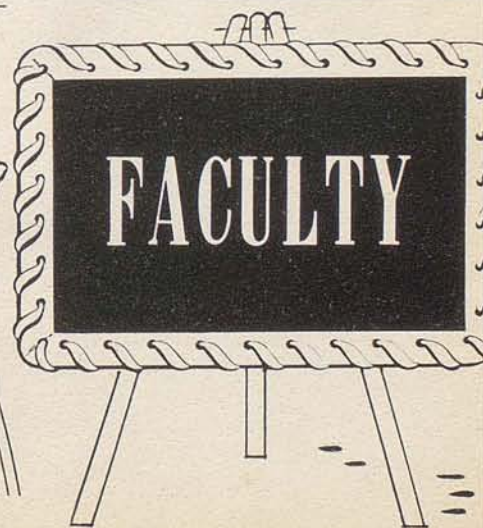
To one from whom we have received an undying inspiration, we the Class of '51 take this opportunity to express our appreciation for the time and effort that Miss Noland has devoted to us.





WILLIAM F. RUSSELL
Principal

A. B. Centre College;
M. A. University of Kentucky





MARY ELEANOR ISGRIG

A. B. University of Kentucky; Science.

GILBERT LAVIN

A. B. University of Kentucky;

M. A. University of Michigan; Latin.

BETSY BROOKS WOODFORD

A. B. University of Kentucky; Romance Languages.

MRS. DAN PEED

B. S. University of Kentucky; Home Economics.

CARL HERRON

A. B. University of Kentucky; Mathematics.

MRS. W. V. SHAW

A. C. A. Bowling Green;

A. B. Bowling; Commerce.





WILLIAM HAYS

A. B. Georgetown College; Science.

AGNES PURNELL

A. B. University of Kentucky; Mathematics.

SUE BROWN

A. B. University of Kentucky; English.

MARION MITCHELL

A. B. Randolph Macon Woman's College;
M. A. Columbia University; Geography.

ALICE McCLINTOCK

A. B. Georgetown College
M. A. University of Michigan; Latin.

HELEN HUNTER

A. B. University of Kentucky;
M. A. Columbia University; History.





BARBARA SHAFER

B. M. University of Kentucky; Music.

MELVIN ADAMS

B. S. Rio Grande College; Mathematics.

MRS. JOHN C. CLAY

A. B. University of Illinois; Librarian.

LOIS JEAN WHEELER

A. B. Morehead State College;
Area of Concentration in Music.

RONALD ALLEN

A. B. University of Kentucky; Athletics.
M. A. University of Kentucky.

KATHLEEN LOVELL

A. B. University of Kentucky; English.





SENIORS



SENIOR CLASS OFFICERS

President Joe Shriver
 Vice-President Jerry Jackson
 Treasurer Harold Myers
 Secretary . . Betty Catesby Woodford





FRED BURNS

In football, Freddie Strengthened our line,
A grand sport, and we think he's fine.
Commercial Club 3-4; Football 1-2-3-4; Basketball
Manager 2.

BETTY LANGFELS

Betty's a sport and a friend to all,
Wonder why she's interested in Basketball.
Latin Club 2; Commercial Club 3-4; Glee Club 2-3-4;
Service Club 4; Home Economics Club 1-2; Annual
Staff; Choir 3-4; Music Club 2; Mixed Glee Club 2;
Parisian Circle 4.



PHYLLIS CAYWOOD

Phyllis plans to go to beautician school
We wonder if Frank will like this rule.
Latin Club 2; Commercial Club 3; Glee Club 1; Home
Economics Club 1-2-3-4; Romance Language Club 3;
Band 1 2; Majorette 3-4.

EUGENE CAIN

Cain, our athlete, pulled us through,
In basketball, and this year football too.
Latin Club 2; Commercial Club 3; Hi-Y 3; Annual
Staff; Junior Chorus 1; Football 4; Basketball 1-2-3-4;
Baseball 2-3-4.

LARRY HENNESSEY

"Dude" is known as a friend to all,
A football star and coached basketball.
Commercial Club 3; Hi-Y 1-2; Romance Language
Club 2-3; Basketball 1-2; Football 1-2-3-4.



JERRY JACKSON

We've teased Jerry all along, but
She and Fred are still going strong.
Beta Club 3; Speech Club 2-3-4; Latin Club 2; Orange
and Black 1; Junior Chorus 4; Commercial Club 3;
Home Economics Club 1-2; Annual Staff 4; Tri-Hi-Y
4; Class Officer 4; Glee Club 3-4; Debate 3-4; N. F.
L. 3-4; Service Club 4.



DIANE ARNSPARGER

"Diny's the drummer and president of our band,
When it comes to mischief she's an old hand.
Latin Club-2; Commercial Club-3; Annual Staff-4; Tri-
Hi-Y-2-4; Band-1-2-3-4; Band President 4; Cheer-
leader 1; Junior Chorus 1.



CHARLES ANDERSON

Charles a good looking country lad
Always smiling and never mad.
Commercial Club 3; Latin Club 2; Baseball 2-3-4;
Basketball 3-4; Football 2; Mathematic Club 4.



DAVID FELD

"Sol" was the great lover of our class
But guess he settled for Vocational at last.
Latin Club 2; Speech Club 2-3-4; Annual Staff 4;
Romance Language Club 3; Football 2.

BETTY WOODFORD

Here comes Betty in her little Chevrolet,
Known for her happy and care free way.
Beta Club 3-4; Latin Club 2; Speech Club 2-3-4; Com-
mercial Club 3; Glee Club 4; Service Club 4; Annual
Staff 4; Tri-Hi-Y 2; Romance Language Club 2-3; Class
Officer 4; Majorette 3-4.



WILMA REYNOLDS

A real good nurse Wilma will make,
We hope she will for Tommy's sake.
Speech Club 4; Commercial Club 3; Glee Club 4; Tri-
Hi-Y 4; Junior Chorus 1; Latin Club 2.

HAROLD MYERS

Here's to Harold, our class treasurer,
To have him with us was quite a pleasure.
Basketball 3-4; Band 1-2; Commercial Club 3; Serv-
ice Club 4; Annual Staff 4; Romance Language Club
2; Class Officer 2-4; Hi-Y 1-2-3-4; Parisian Circle
2-3-4; Mathematic Club 4.





WILL G. FLORENCE

Will G. and Betty Jo are still going strong,
Maybe they'll settle down before long.
Latin Club 2; Annual Staff; Romance Language Club
3; Basketball 1-2; Football 1.



WILMA TURNER

Wilma is quiet, but lots of fun,
We hear North Middletown gives her quite a run.
Beta Club 3-4; Latin Club 2-3-4; Speech Club 2;
Junior Red Cross Council; Annual Staff; Parisian Circle
2-3-4; Orange and Black 1; Commercial Club 3-4;
Service Club 4; Home Economics Club 1; Class Officer
2.

MARGARET RUSSELL

"Maggie", is blond, a flirty lass,
Known as the friendliest of our class.
Band Sponsor 4; Beta Club 3-4; Speech Club 3-4;
Commercial Club 3; Glee Club 3-4; Debate 3-4;
Service Club 4; Annual Staff; N. F. L. 3-4; Choir 4;
Romance Language Club 2-3-4.

JOE SHRIVER

The President of our Senior Class
Has his eye on a red-haired lass.
Latin Club 2; Commercial Club 3-4; Service Club 4;
Annual Staff; Class Officer 3-4; Basketball 4; Football
2-3-4; Parisian Circle 3-4.

EDDIE WELLS

Eddie's left us to join the air corps
Here's luck to him and then some more.
Football 2-3; Baseball 3; Basketball 3.

NANCY GREENUP

With her style and graceful way
Nancy's sure to succeed some day.
Latin Club 2-3-4; Speech Club 2-3-4; Junior Red Cross
Council 1-2-3-4; Orange and Black 1; Commercial
Club 3; Glee Club 2-4; Service Club 4; Home Econom-
ics Club 4; N. F. L. 1-2-3-4; Choir 2-3-4; Junior Cho-
rus 1; Music Club 2; Mixed Glee Club 2; Pianist 1-4;
Parisian Circle 3-4.



HAZEL GREEN

Hazel seems to be so smart
And cares a lot for a guy named Art.
Beta Club 3-4; Latin Club 2; Speech Club 2-3; Orange
and Black 1; Commercial Club 3-4; Glee Club 2-3-4;
Service Club 4; Annual Staff; Home Economics Club
1; Choir 3-4; Tri-Hi-Y 2; Romance Language Club 2-
3-4; Junior Chorus 1; Music Club 2.



DANIEL FRYMAN

Daniel's always with a sophomore lass
In his little black Ford they're really class.
Latin Club 2; Commercial Club 3-4; (President 4);
Annual Staff 4; Hi-Y 3-4; Basketball 2; Football 1-2-
3-4; Mathematic Club 4.



JOE ANDERSON

He came to us ahead of time
And left the Junior Class behind.
Latin Club 2-4; Service Club 4; Debate 2; Basketball
Manager 2-4; Football Manager 1; Baseball Manager
2; Parisian Circle 4; Speech Club 2.

ALICE FULLER

Alice, a stylish and dainty lass
Was the first married of our class.
Commercial Club 3; Home Economics Club 1-2-3-4;
Latin Club 2; Cheerleader 1-2-3-4; Glee Club 4; Band
1; Junior Chorus 1.

NORMA HON

Norma's a swell girl, sweet and shy,
She'll probably live in Versailles by and by.
Commercial Club 3-4; Glee Club 3-4; Annual Staff 4.



ZEKE CLAY

Here's a guy that's hard to meet,
But when you know him, he's all reet.
Latin Club 2-3; Commercial Club 3-4; Football 2-3-
4; Class Officer 2; Mathematic Club 4.





NELSON BISHOP

A toast to Rastus, our senior clown,
Not a better guy can be found.
Latin Club 2-3; Basketball 2-3; Class Officer 3; (President).



EVELYN JOHNSON

Evelyn, has long been Sylvester's flame
Maybe someday he'll change her name.
Beta Club 3-4; Latin Club 2-3-4; Speech Club 2-3;
Orange and Black 1; Service Club 4; Home Economics
Club 1; Annual Staff 4; Junior Chorus 1; Commercial
3-4.

MARY LOU DOCKENBRODE

Mary Lou is always frettin' and stewin'
Because some new love is brewin'.
Latin Club 2-3-4; Speech Club 2; Commercial Club 3-4;
Service Club 4; Annual Staff 4; Junior Chorus.

KELLY SMITH

Smitty's always ready with a song
In basketball and football he can't go wrong.
Latin Club 2; Choir 2-3-4; Hi-Y 3; Football 2-3-4;
Basketball 2-3-4; Annual Staff 4; Mixed Glee Club 2.

JIMMY SUMMERLIN

Jimmy's always with Barb in the hall
He's one of our stars in basketball.
Choir 2-3-4; Boy's Glee Club 2; Basketball 2-3-4; Football 4; Baseball 3; Speech Club 4; Annual Staff 4; Hi-Y 3-4; Mixed Glee Club 2; Commercial Club 3; Mathematical Club 4.

ANNA McCORD

When Anna's around, our hearts are light
We've teased her a lot, but she's all right.
Commercial Club 3-4; Glee Club 2-3-4; Home Economics Club 2; Annual Staff; Junior Chorus 1; Mixed Glee Club 2; Speech Club 4; Latin Club 2.



RUBY ARNSPARGER

Ruby's a leader in clubs and debate
All of us Seniors think she's first rate.
Beta Club 3-4; Latin Club 2-3-4; Orange and Black 1;
Glee Club 2-3-4; Service Club 4; Debate 3-4; Annual
Staff 4; N. F. L. 3-4-5; Choir 4; Tri-Hi-Y 2; Junior
Chorus 1; Music Club 2; Class Officer (Sec. 3).



MILLER DOYLE

Miller's a fine lad and they all say
He likes a red-head, not far away.
Latin Club 2-3; Speech Club 2-3-4; Commercial Club
3-4; Annual Staff 4; Choir 4; Junior Chorus 1; Hi-Y 3-4.



BOBBY RICHARDSON

There stands "Casey" in the hall,
What's he doing, holding up that wall?
Commercial Club 3-4; Latin Club 2; Football 3.

JEAN MANSFIELD

Jean has helped sing and lead the band,
For this we give her a great big hand.
Commercial Club 3-4; Glee Club 2-3-4; Home Economics Club 1-2; Annual Staff 4; Drum Majorette
3-4; Choir 2-3-4; Junior Chorus 1; Music Club 3-4;
Mixed Glee Club 2-3-4.



BARBARA JORDAN

Here's to Barb, who for years
Has pulled us through our many cheers.
Beta Club 3; Latin Club 2; Speech Club 2; Orange
and Black 1; Commercial Club 3-4; Annual Staff 4;
Class Officer 1; Cheerleader 1-2-3-4.

MALCOLM DOYLE

Malcolm his little clarinet does play,
He'll put Benny Goodman out of business someday.
Latin Club 2; Commercial Club 3; Annual Staff 4;
Hi-Y 3-4; Junior Chorus 1; Band 1-2-3-4; Basketball
Manager 2; Football Manager 2; Mathematics Club 4.





BOBBY BURDEN

Burden's not a student, the teachers have found.

But he's an awful nice guy to have around.
Latin Club 2; Annual Staff; Baseball 3-4.



CAROLYN MARSHALL

Her grin is big, she's never sad,
But clear the track when she gets mad.

Latin Club 2-3-4; Romance Language Club 2-3; Service Club 4; Annual Staff 4; Orange and Black 1; Commercial Club 3-4; Glee Club 2; Tri-Hi-Y 2-4; Junior Chorus 1; Music Club 2.

MARTHA MATTOX

Martha is a quiet little lass,
There's one like her in every class.

Latin Club 2; Commercial Club 3-4; Glee Club 1-2-3-4; Annual Staff 4; Choir 2-3-4; Junior Chorus 1; Music Club 2.



DUDLEY BOYLE

Small in size, but large in fun,
Just look at all the friends he's won.

Latin Club 2; Orange and Black 1-3; Annual Staff 4; Commercial Club 3; Class Officer 2, (Secretary).

ROBERT THOMAS

He never has a lot to say,
Except when someone gets in his way.

Commercial Club 4; Latin Club 2; Junior Chorus 1.

BARBARA HAZELRIGG

Barbara's happy, Barbara's gay,
When in Carl's little Chevrolet.

Commercial Club 3-4; Glee Club 3-4; Mixed Glee Club 2; Annual Staff 4; Junior Chorus 1.

HARRY B. SMART

Harry B. is always Lexington bound,
Sitting at Jerry's house he'll be found.

Latin Club 2; Romance Language Club 3; Football 1-2.





SENIOR CLASS POEM OF 1951

We, the Seniors of 1951

Now that our school days are over and gone,
Feel that we are ready to begin our lives,
As businessmen and farmers, as husbands and wives.

As we think back to days gone by,
Of the happy hours at Paris High,
We recognize a debt that we all owe,
For a good education, for all that we know.

We will always remember this dear old school,
Whether sitting in an office or wielding a tool,
We gave little for all that we've learned
And from our duty we often turned.

But all of us would like to say,
We're sorry we were that way,
And we are all going to try
To make our school proud of us by and by.

Although you hear some folks say
The teachers are at fault all the way,
We want you to know it isn't so.
It is we who are guilty, we ought to know.

Some won't realize until later on
That one of our chances to learn is gone-
They didn't study, threw time away
But you can bet they'll regret it someday.

These things we all think as one,
Now that our school days are about done.
Most of us will be sorry to say goodbye
To dear old Paris High.





FRONT ROW: Martha Mattox, Clubs; Barbara Hazelrigg, Circulation; Evelyn Johnson, Snapshot; Margaret Russell, Advertising; Betty Woodford, Advertising, Biographies; Wilma Turner, Assistant Editor; Ruby Arnsperger, Clubs; Barbara Jordan, Advertising; SECOND ROW: David Feld, Art; Bobby Burden, Sports; Will G. Florence, Sports; Larry Hennessey, Sports, Advertising; Daniel Fryman, Typing; Malcolm Doyle, Circulation; Jimmy Summerlin, Sports; THIRD ROW: Jerry Jackson, Advertising; Betty Lang-

fels, Biographies; Hazel Green, Assistant Editor, Snapshot; Mary Lou Dockenbrode, Jokes; Norma Hon, Typing; Mrs. Louise Clay, Faculty Advisor; FOURTH ROW: Dudley Boyle, Class Poem; Diane Arnsperger, Snapshot, Biographies; Anna McCord, Jokes; Nancy Greenup, Editor, Class Poem; Carolyn Marshall, Clubs; Jean Mansfield, Art; FIFTH ROW: Joe Shriver, Editor-in-chief; Kelly Smith, Art, Sports; Miller Doyle, Editor, Typing; Eugene Cain, Sports; Harold Myers, Treasurer.

ANNUAL STAFF





JUNIORS



JUNIOR CLASS OFFICERS

President	Jimmy Myers
Vice-President	Douglas Lawhorn
Secretary	La Faun Brown
Treasurer	Carrie Farris

JUNIOR CLASS ROLL

Bill Stamler
Wayne Shumate

Louis Emmons
Virginia S. Turner
Billy Talbot
Jo Wagoner

Martha Wagoner
Bobby Wills
Dolores Williams
Bruce Forsythe

George Dundon
Charlotte Curtis
Ray Thompson
Blanche Dockenbrode

Helen Shelburne
Brooks Talley
Patsy Hill
Wayne Dearing

Henry Owens
Mable Robb
Walter Herndon
Eula Buckler

Carrie Farris
Fred Nichols
Mildred Moore
La Faun Brown

JUNIOR CLASS ROLL

Juanita Withers
Mary Sue Bell

Tommy Bowling
Lucy Blanton
Gerald Browning
Phyllis Butler

Charlotte Lemons
George Lucky
Susan Allen
Jimmy Myers

Bobby Caywood
Roberta Hadley
Billy Hall
Jackie Hogan

Caroline Proc Wood
Donald Honican
Martha Hukill
George Leer

Edward Lyons
Faye Moreland
Eugene Maxwell
Deirdie Nolan

Clara Rinesmith
Julian McCord
Mary Jo Sheeler
Douglas Lawhorn





JUNIOR CLASS ROLL

Jean Pitts
Glen Wagoner
Harold Clinkenbeard



Donald McCord
John Willie Crump
Fred Laycock
June Lawrence

JUNIOR CLASS HISTORY 1950-1951

The Class of '52 had its beginning in September of 1940. Going to school was new and exciting. Eagerly we began our studies. Through the first six years we had a good time going to school and when the sixth grade graduation came around we thought we were really on our way. But the worst was yet ahead of us.

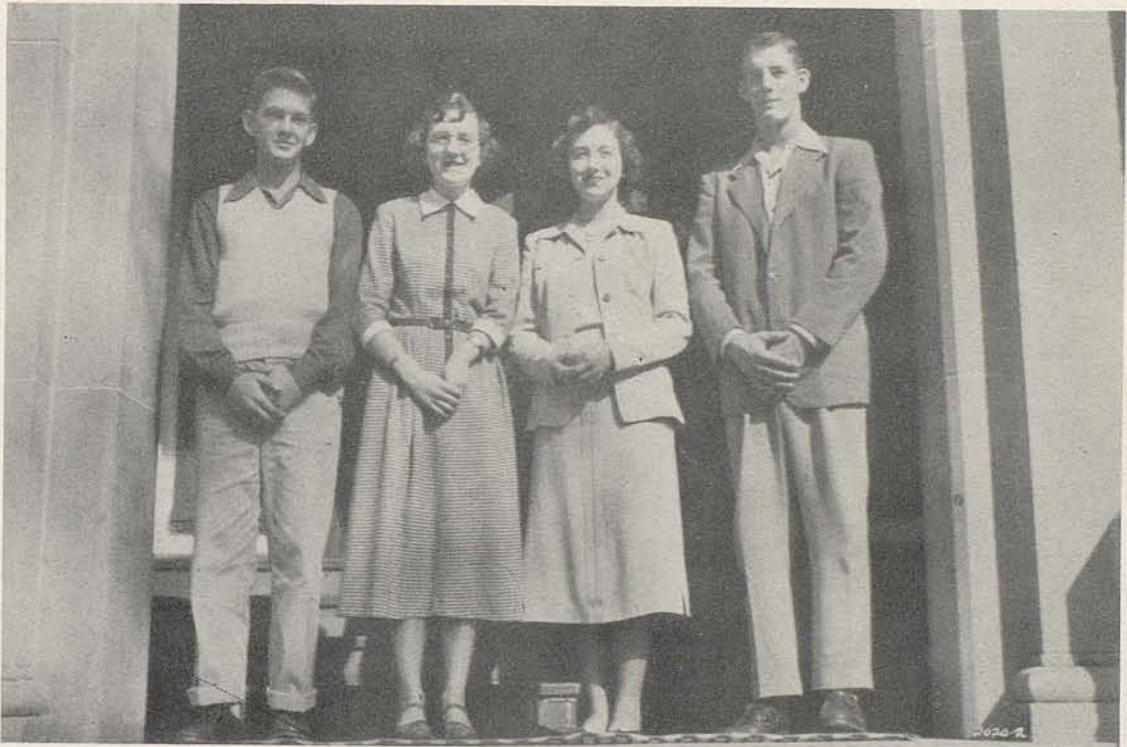
Then when we entered Junior High in 1947 we just couldn't get used to changing classes. We got lost many times before learning our way around. When ninth grade graduation was over we looked ahead to our years in Senior High with great hopes.

As Sophomores we were looked down upon by the Juniors and Seniors but now, being Juniors, we have the pleasure of looking down upon the Sophomores. We are called the "in-between" class because we are not as sophisticated as the Seniors and not as young as the Sophomores.

Our students participate in various activities and have co-operated with the March of Dimes and Red Cross. We now, as Juniors, look forward to our Senior year and hope to graduate in '52.



SOPHOMORES



SOPHOMORE CLASS OFFICERS

President. . . Chester Wigglesworth
Vice-President . . . Jimmy Withrow
Secretary. . . . Jenny Joe Florence
Treasurer Frances Doyle



Audrey Santen
Charles Mattox



Elizabeth Nichols
Harold Parsons
Eva Puckett
Betty Mason



Sam Reynolds
Ann Richardson
Marilyn Jones
Hart Sledd



Elizabeth Scott
Barbara Whirls
Delbert Smith
Betty Doyle



Jane Smith
Chester Wigglesworth
Jean Smith
Barbara Shelley



Billy Webb
Beulah Saylor
May Lou Sadler
Edwin Kirkpatrick



Catherine Nagle
Jimmy Kearns
Barbara Rinesmith
Jimmy Withrow

Joy West
Paul Craycraft



Nancy Bishop
Donald Boyle
Carolyn Bowling
Shirley Cain



Victor Clark
Jesse Marie Clark
Ellen C. Clinkenbeard
Bobby Crump



Eunice Warren
Lucinda Day
James Dundon
Frances Doyle



Jenny Joe Florence
Billy George
Dorothy Fullington
Barbara Gilvin



J. B. Hon
Joan Ingels
Nancy Leek
Billy Langfels



Barbara James
Wilma McNees
Barbara McKenzie
Joan McCord





Harry Galbraith
Carolyn Collier
Dorothy Burris

Jake Boyle
Martha Hudnall
Athena Simos

THE SOPHOMORE CLASS

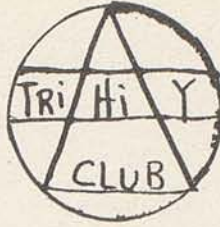
The Sophomore Class of 1950 - '51 is composed of fifty eight students. We are divided into two home rooms. Miss Isgrig and Mr. Herron are our home room teachers.

Two of our class are members of the Parisian Circle. The members of our class participate in various organizations, such as, the Speech Club, Tri-Hi-Y, Hi-Y, Glee Club, Choir, Latin Club, and Spanish Club.

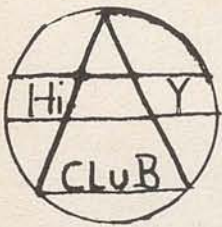
We are well represented by several boys who are active in basketball and football. We are also proud of our two cheerleaders, who help cheer our boys to victory.

We are proud of being Sophomores and are looking forward to being Juniors next year.





ACTIVITIES





SERVICE CLUB

The Service Club, an honorary organization of Paris High, is based on leadership, character, and scholastic standing. The main duty of this club is to assist the faculty in any possible way. On two occasions this year, the Service Club entertained the visiting high school athletic clubs, McKell and Ashland.

Mary Lou Dockenbrode, Wilma Turner, Carolyn Marshall, Betty Woodford, Jerry Jackson, Nancy Greenup, Joe Shriver, Joe Anderson, Harold Myers, Ruby Arnsperger, Betty Langfels, Hazel Green.

PARISIAN CIRCLE

The Parisian Circle is an honor organization made up of two Sophomores, four Juniors, and six Seniors with high scholastic standings. Membership in this organization is one of the highest honors given in Senior High School. This club stands for the principles of honor, and high scholastic achievement.

SENIOR MEMBERS: Joe Anderson, Nancy Greenup, Betty Langfels, Harold Myers, Joe Shriver, Wilma Turner, JUNIOR MEMBERS: Lucy Blanton, Gerald Browning, Wayne Dearing, Clara Rinesmith, SOPHOMORE MEMBERS: Jimmy Dundon, Ann Richardson.



ROMANCE LANGUAGE CLUB

OFFICERS

President . . . Martha Wagoner
Vice President . Chester Wigglesworth
Sec. & Treas. . . Jimmy Myers

The Romance Language Club consists of the French and Spanish students and is sponsored by Miss Betsy Brooks Woodford. The students study about the French and Spanish people and their customs.

Club for programs at Christmas and during Latin Week. Sophomores appeared in the costume play, "The Gladiator", presented in December and in the assembly program in April.

The motto is: Labor omnia vincit - Labor conquers all. The sponsor of both clubs is Miss Gilbert Lavin.

OFFICERS

Junior-Senior		Sophomore
President . . .	Nancy Greenup . . .	Edwin Kirkpatrick
Vice President .	Gerald Browning . . .	Ann Richardson
Secretary . . .	Dolores Williams . . .	Donald Boyle
Treasurer . . .	Joe Anderson . . .	Paul Craycraft

LATIN CLUBS

JR.-SR.-SOPH

The Senior Latin Club is composed of members of the Junior and Senior Classes. The purpose of the club is to provide activities outside the classroom for Latin students. The club holds regular monthly meetings and presents programs for the club and the school.

Latin Week is celebrated during the second week of April and the convention of the Junior Classical League held at the University of Kentucky was attended by thirty Senior High School members. A short number was presented by the Paris Club as a part of the program.

The motto is: Esse quom videri - To be rather than to seem.

The Sophomore Latin Club carries on its own activities but joins with the Junior-Senior



BETA CLUB



BETA CLUB MEMBERS OF 1950-51: Ruby Arnsparger, Hazel Green, Wilma Turner, Betty Woodford, Margaret Russell, Evelyn Johnson, Frances Conner, Blanche Dockenbrode, Charlotte Curtis, Jean Pitts, Martha Jean Wagoner, Carrie Farris, Mary Sue Bell, La Faun Brown, Lucy Blanton, Martha Hukill, Dolores Williams, Clara Rinesmith, Deirdre Nolan, Helen Shelburne, Caroline Proc Wood, Virginia Stanforth, Gerald Browning, Julian McCord, Douglas Lawhorn, Jimmy Myers.

President	Ruby Arnsparger
Vice-President.	Hazel Green
Secretary	Wilma Turner
Treasurer.	Carrie Farris

The Beta Club is a chapter of the National Beta Club. The club has a membership of twenty-six Juniors and Seniors and is under the sponsorship of Miss Gilbert Lavin. Its purpose is to encourage achievement, character, leadership and its members are required to maintain a high scholastic standing.

The Beta Club acts as a service organization and assists at many school functions during the year. Its members may share in many services offered by the National organization. This year we have had one article published in the National Beta Club Journal.

Early in the 1950-51 school year the officers were elected. They are:

SPEECH CLUB

Officers of the Speech Club and National Forensic League are:

President Ruby Arnsperger
Vice-President . . . Betty Woodford
Secretary Margaret Russell

THE MATHEMATICS CLUB

The Mathematics Club is a newly formed club under the direction of Mr. Herron.

Its purpose is to learn to appreciate mathematics and have full command of the fundamental processes of mathematical procedures.

The only standard is that of genuine interest in mathematics.

MEMBERS: Ruby Arnsperger, Nancy Bishop, Jerry Jackson, Audrey Santen, Charles Anderson, Harold Myers, Zeke Clay, James Summerlin, Billy Hall, Kelly Smith, Nelson Bishop, Joe Shriver, Malcolm Doyle, Bill Stamler, George Leer, Dudley Boyle, Sam Reynolds.

The Speech Club is sponsored by Miss Noland with the able assistance of Miss Susan Hinkle. Its purpose is to emphasize the importance of speech in everyday life and to motivate the study and practice of speech arts by high school students.

Some of our members belong to the National Forensic League. Membership in this organization is limited to those who can attain twenty forensic points, and degrees are given to distinguish the additional points earned.

Miller Doyle, Nancy Greenup, Betty Woodford, David Feld, Wilma Reynolds, Anna McCord, Clara Rhinesmith, Carolyn Boling, Jennie Joe Florence, Brooks Talley, Carolyn Collier, Billy Webb, Jimmy Dundon, Audrey Santen, Marilyn Jones, Charles Mattox, Ann Richardson, Mary Sue Bell, Margaret Russell, Ruby Arnsperger, Edwin Kirkpatrick, Donald Boyle, Jerry Jackson, Shirley Cain, Jimmy Summerlin, Joann Ingels, Virginia Stanforth, Hazel Green, Bill Stamler, Caroline Proc Wood, Barbara James, Elizabeth Nichols.





TRI-HI-Y

The Tri-Hi-Y Club was reorganized this year under the sponsorship of Miss Isgrig. The club is made up entirely of Sophomores. The purpose of the group is to promote higher Christian ideals in all phases of life.

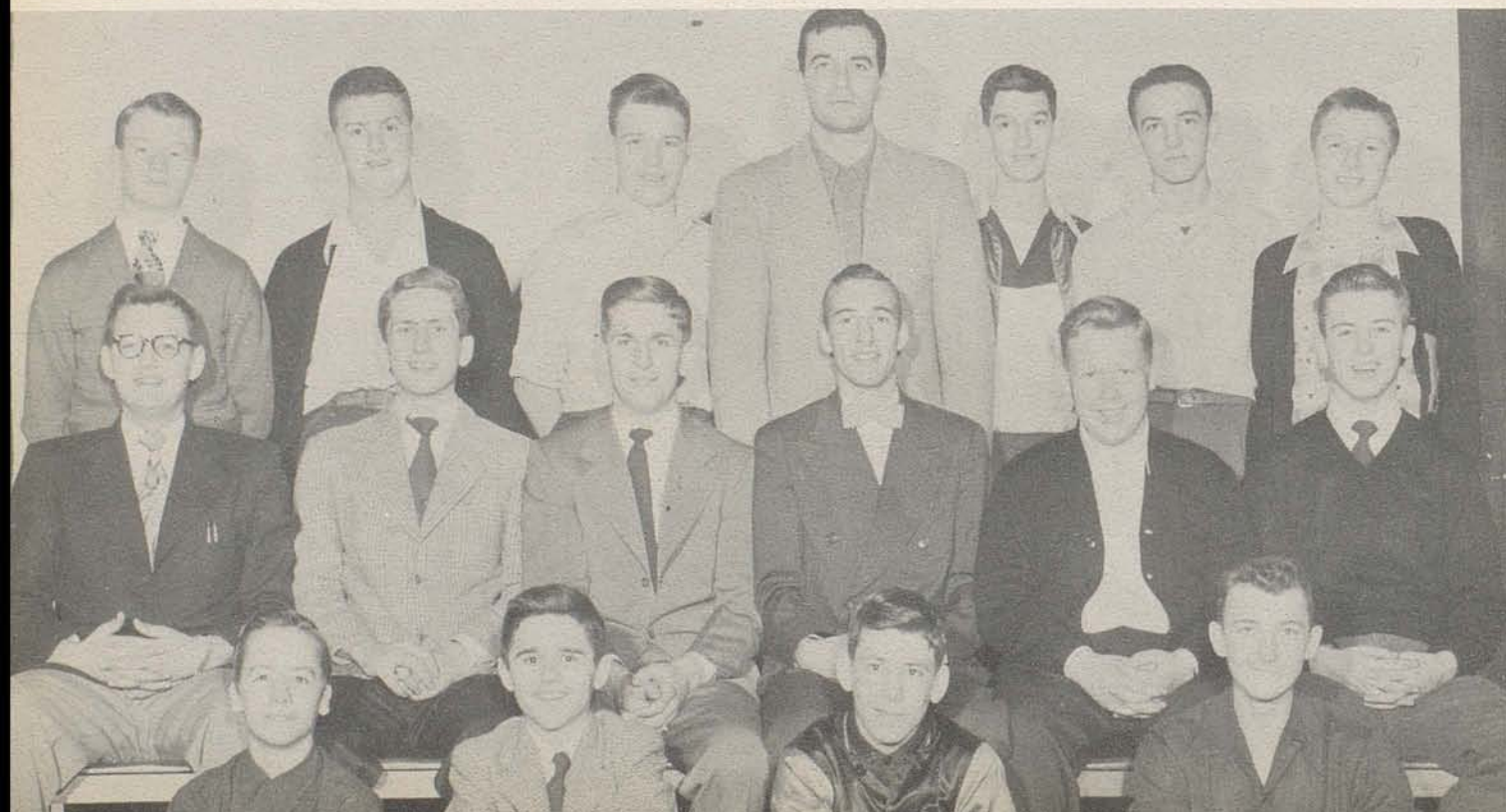
Among our activities we sent four delegates to the Y. M. C. A. Youth Assembly in Frankfort.

The members of the club are as follows: Nancy Bishop, Carolyn Bowling, Shirley Cain, Jessie Clark, Carolyn Collier, Lucinda Day, Frances Doyle, Jennie Florence, Barbara Gilvin, Joann Ingels, Barbara James, Marilyn Jones, Betty Mason, Joan McCord, Wilma McNees, Catherine Nagle, Ann Richardson, Barbara Rinesmith, Audrey Santen, Barbara Shelley, Eunice Warren and Elizabeth Scott.

HI-Y CLUB

Hi-Y Club of Paris High School has as its purpose the development of high Christian ideals, maintenance of good moral standards and the cultivation of good character. The Club is further dedicated to civic works and projects which have in mind the betterment of the community.

President, Harold Myers; Vice President, Miller Doyle; Secretary, Malcolm Doyle; Treasurer, Jimmy Summerlin; Chaplain, Bill Stamler; Sam Reynolds, Jimmy Dundon, Billy Hall, Charles Mattox, Billy Webb, Billy George, Eugene Maxwell, Henry Owens, Bobby Caywood.





THE CHAPEL CHOIR

This is one of the best organizations in the school. It is limited to 36 members from the Sophomore, Junior and Senior classes. They sing at various programs through out the year, giving a special Christmas program every year at the Rotary Club. This year they presented their Christmas program at the new Tuberculosis Sanatorium.

MEMBERS, SOPRANOS: Susan Allen, Lucy Blanton, Lucinda Day, Dorothy Fullington, Hazel Green, Nancy Greenup, Betty Langfels, Nancy Leek, Charlotte Lemons, Elizabeth Nichols, Virginia Stanforth, Dolores Williams. ALTOS: Ruby Arnsperger, Betty Doyle, Carrie Farris, Martha Hudnall, Jeanne Mansfield, Jennie Jo Florence, Margaret Russell, Barbara Whirls, Martha Mattox. TENORS: John Crump, Jimmy Dundon, Douglas Lawhorn, Kelly Smith, Bill Stamler, Bobby Wills, Jimmy Withrow. BASSES: Tommy Boling, Wayne Dearing, Edwin Kirkpatrick, Jimmy Myers, Julian McCord, Jimmy Summerlin, Sammy Reynolds, Miller Doyle. ACCOMPANIST: Helen Shelburne.

THE GIRLS' GLEE CLUB

The Glee Club is made up of Senior High girls interested in music. It is composed of fifty-three members this year. It presents a program at Christmas and sings on various occasions through the year.

MEMBERS, SOPRANOS: Susan Allen, Carolyn Bowling, Norma Hon, Eula Buckler, Phyllis Butler, Shirley Cain, Carolyn Collier, Lucinda Day, Charlotte Curtis, Barbara Gilvin, Hazel Green, Nancy Greenup, Anna McCord, Jean Pitts, Evelyn Pope, Elizabeth Nichols, Mabel Robb, Audrey Santen, Beulah Saylor, Mary Lou Sadler, Helen Shelburne, Virginia Stanforth, Juanita Withers, Betty Woodford, Alice Fuller. SECOND SOPRANOS: Dorothy Burris, Phyllis Caywood, Roberta Hadley, Barbara Hazelrigg, Jo Ann Ingles, Jerry Ann Jackson, Barbara James, June Lawrence, Nancy Leek, Charlotte Lemons, Joan McCord, Faye Mooreland, Barbara Rhinesmith, Clara Rhinesmith, Mary Jo Sheeler. ALTOS: Ruby Arnsperger, Betty Doyle, Frances Doyle, Carrie Farris, Martha Hudnall, Jackie Hogan, Marilyn Jones, Jeanne Mansfield, Martha Mattox, Margaret Russell, Wilma Reynolds, Athena Simos, Barbara Whirls, Jo Wagoner.





BAND

The Paris High School Band has been reorganized and is now under the direction of Miss Lois Wheeler. The Paris fans have noted a great improvement in the band this year and were glad to have them perform during the half times of the basketball and football games. The band now has forty-two members.

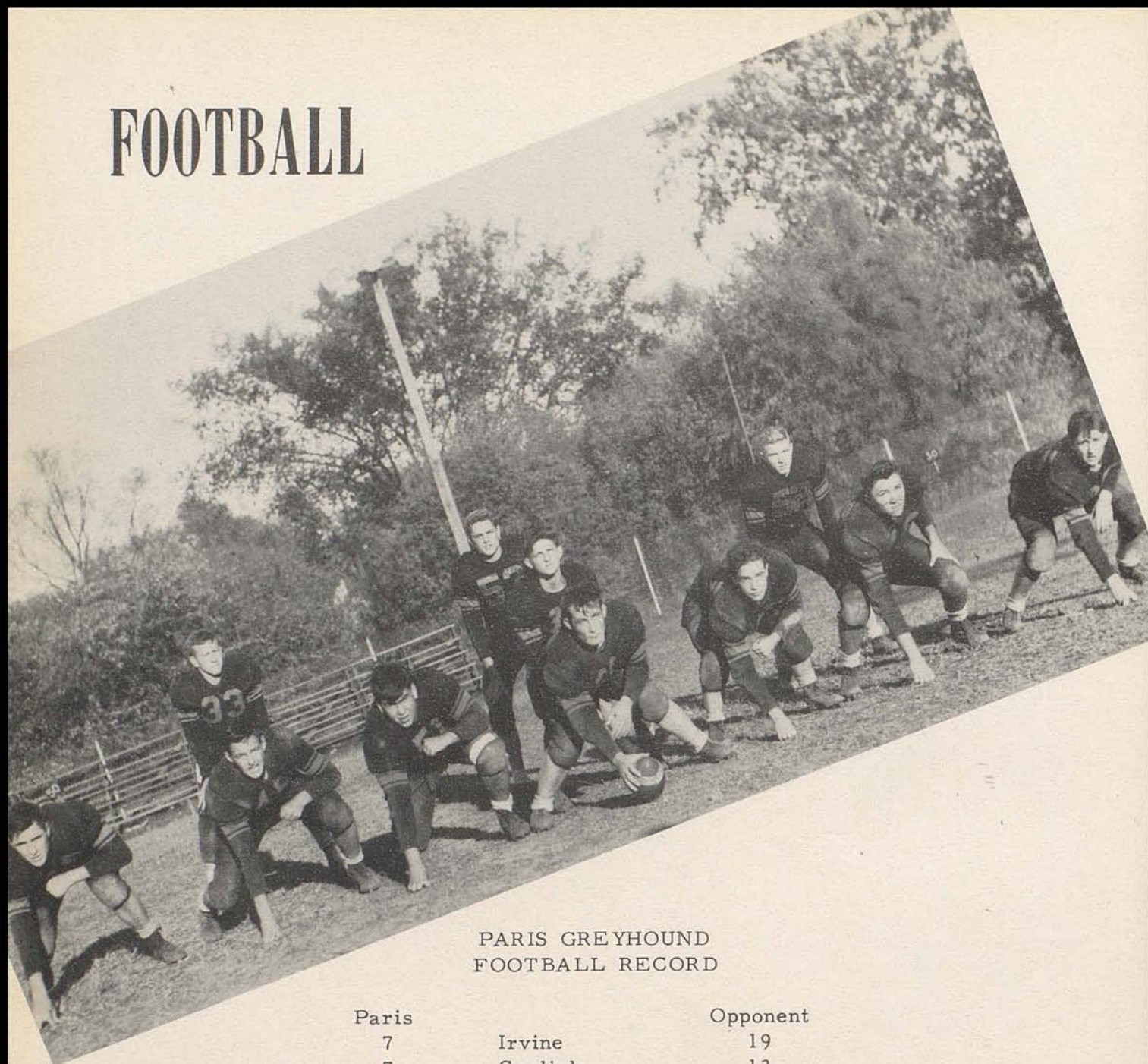
The officers for the year were: Diane Arnsperger, president; Bill Stamler, vice-president; Sue Del Campbell, secretary-treasurer.

Band Sponsor	Margaret Russell
Majorettes	Phyllis Caywood
.	Betty Woodford
.	Jackie Hogan
Band Major	Jean Mansfield





FOOTBALL



PARIS GREYHOUND FOOTBALL RECORD

Paris		Opponent
7	Irvine	19
7	Carlisle	13
52	Georgetown	0
28	Cynthiana	0
19	Mt. Sterling	34
25	McKell	18
13	Winchester	41
21	Shelbyville	61





1. Fred Burns

2. Daniel Fryman

COACHES
Adams & Allen



FRONT ROW: Joe Shriver, Sam Reynolds, Harold Clinkenbeard, Jimmy Summerlin, Louis Emmons, Jimmy Withrow, Kelly Smith, Daniel Fryman, Wayne Shumate, Nelson Sadler. SECOND ROW: Fred Burns, Donald Beheler, Joe Mitchell, Brent Clay, Bill Stamler, Zeke Clay, Ray Thompson, Donald McCord, Fred Atkinson. THIRD ROW: Coach Ronnie Allen, Manager; Franklin Sledd, Jimmy Wills, Bill Talbott, John Rowe, Jimmy Myers, John Willie Crump, Wayne Shumate, Ross Turpin, Manager Donald Honican, Asst. Coach Melvin Adams. Absent from picture: Eugene Cain.

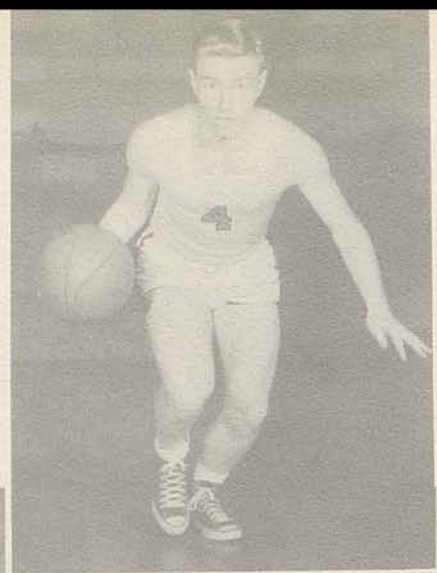
4. Joe Shriver

5. Kelly Smith

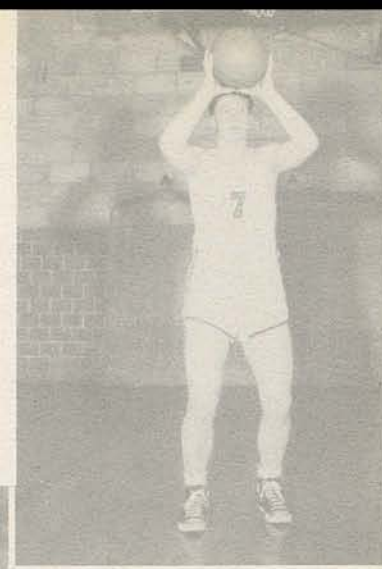




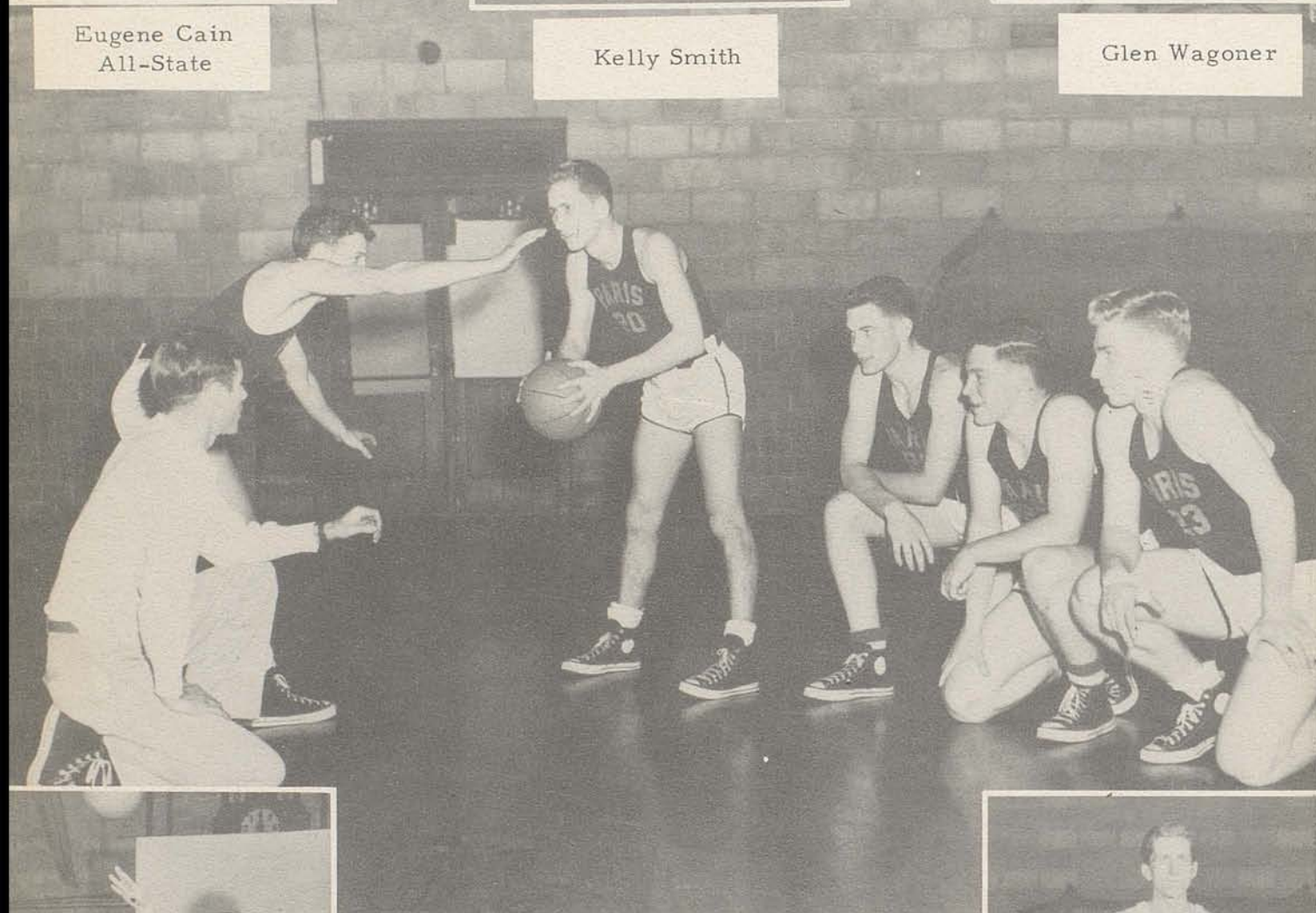
Eugene Cain
All-State



Kelly Smith



Glen Wagoner



YEA! GREYHOUNDS



Douglas Lawhorn



Jimmy Summerlin

BASKETBALL TEAM



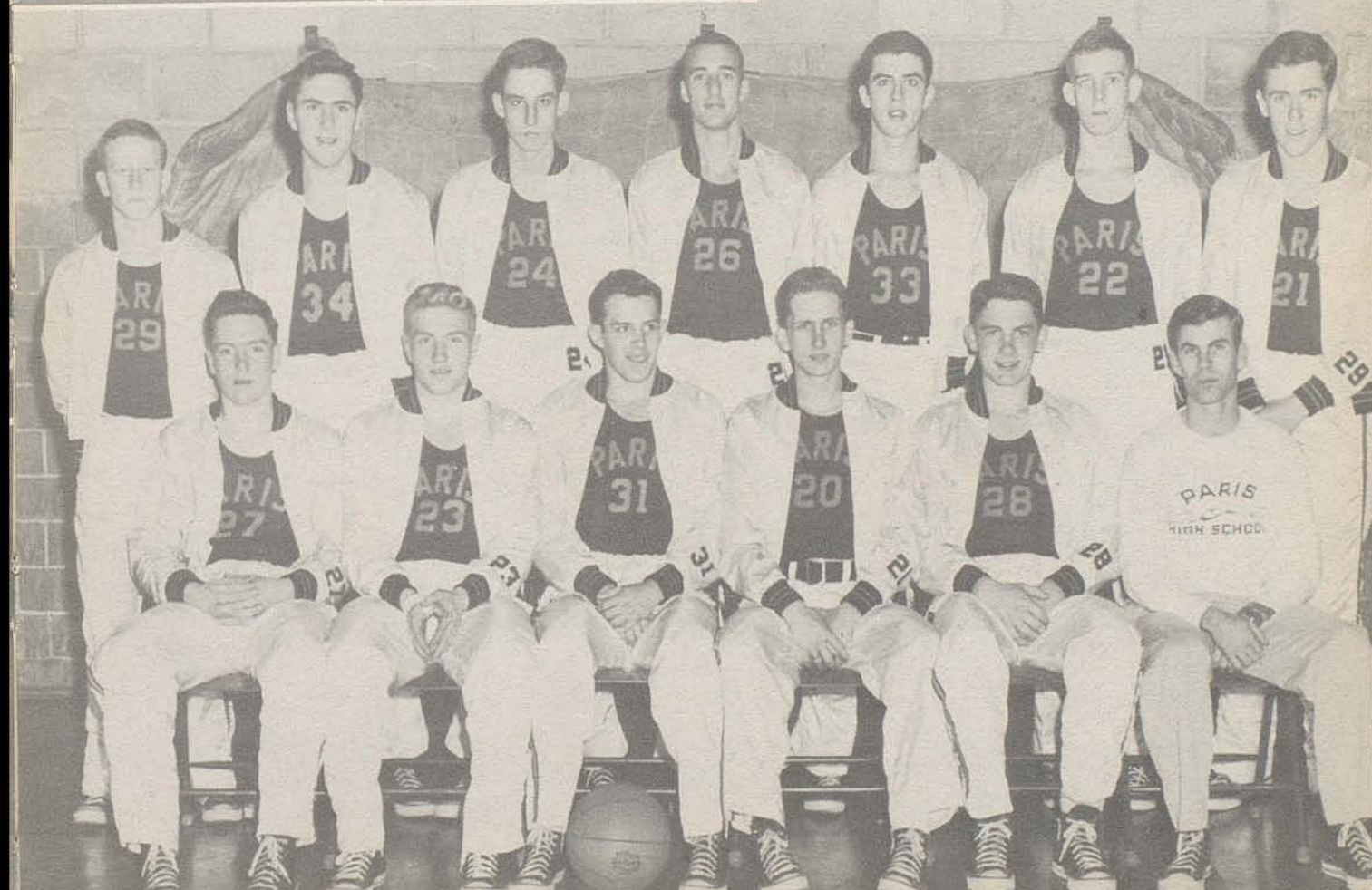
George Leer

Harold Myers

Joe Shriver

Charles Anderson

FRONT ROW: Glen Wagoner, Kelly Smith, Eugene Cain, Jimmy Summerlin, Douglas Lawhorn, Coach Ronnie Allen.
BACK ROW: Nelson Sadler, Joe Shriver, George Leer, Harold Myers, George Dundon, Jimmy Withrow, Charles Anderson.



SEASON'S RECORD

1950-51

Paris

45	Winchester
52	Carlisle
47	Mt. Sterling
58	M. M. I.
48	Harrison Co.
59	Brooksville
62	Cynthiana
46	Bo. Vocational
45	Carlisle
28	Georgetown
33	Ashland
33	Clark County
58	Frankfort
56	Harrison County
52	Shelbyville
44	Louisville Manuak
29	Georgetown
29	Mt. Sterling
34	Winchester
38	Bo. Vocational
54	Cynthiana
38	Ashland
39	Booksville
44	Clark County

Opponents

49
32
34
30
29
32
27
43
30
18
30
46
60
41
47
54
32
27
29
40
33
44
34
48

District Tournament

44	Bo. Vocational	35
58	M. M. I.	32

Regional Tournament

55	Maysville	44
56	Falmouth	39
34	Morgan	32

State Tournament

42	Clark County	47
----	--------------	----





Harold Myers, Joe Shriver, Charles Anderson, Zeke Clay, Eugene Cain, Daniel Fryman, Jimmy Summerlin, Jo Anderson, Kelly Smith, Fred Burns.

SENIOR LETTERMEN

Harold Myers received his letter for two years in basketball. He played center and proved a very valuable player. He will long be remembered for his winning basket in the Regional Tournament.

Joe Shriver received letters in both football and basketball. He played End and was capable and dependable. He and Fred Burns were Co-Captains of the football team.

Charles Anderson received letters in both basketball and football. He was a dependable, loyal player and a good scholar as well.

Zeke Clay was a fine, hard driving player on our football team. He was always in there fighting and holding up his part of the load.

Eugene Cain was the captain of our basketball team this year. He is a fine athlete. He was an outstanding basketball and football player. He was named on the All State Tournament basketball team and was also named on the Courier Journal All State team. He was the master of any position on the basketball floor - a great pivot man, rebounder, guard and sharp shooter.

Tooney, although out for football only in his Senior year proved himself a great football player as well. He was leading scorer in the CKC and received Honorable Mention

on the All State team.

Daniel Fryman as our able fullback received letters for three years. He was a hard hitting player who put all he had into the game.

Jimmy Summerlin played a large part in the success of our basketball team. He was a fast player and worthy of much praise.

Joe Anderson as manager of the basketball team and assistant manager of the football team was the valuable and capable man behind the scene.

Kelly Smith was a valuable player in both basketball and football. He was our hard driving back in football and performed admirably on the gridiron as well as the basketball floor. Kelly will be missed in Paris athletics.

Fred Burns was Paris' most valuable football player. He was a fine line backer. Fred received Honorable Mention on the All State team.

So-long you Varsity regulars!
Side by side you gave your best,
Well done is the work you've finished;
And the example you've set the rest
Will inspire those who will follow
To carry on in groups you've led,
Here's a toast to memories behind you
And good luck for the years ahead!

CHEERLEADERS



Barbara Jordan



Lucinda Day



Joan McCord



Carrie Farris



Susan Allen



Alice Fuller







FRONT ROW: Tom D. Belt, Joe Withrow, Bob Toohey, Paul Sanders, Bill Purcell, Billy Bob McIntire, Fred Bratton, Billy Gay Jones, Tom Conners, John Hart, Jimmy Van Meter. SECOND ROW: Vol Ferguson, Carl Ryan, Russell Kenney, Milton Moreland, John Thompson, Gayle Reese, Henry Peters, John Hadley, Dan Clark, Manager Alfred Vickers. BACK ROW: Asst. Coach Larry Hennessey, Bobby Ricci, Larry Shriver, Virgil Arnold, Hunter Pipes, John Whitaker, Billy Collier, Coach Bill Hays.

JR. HIGH FOOTBALL

Season's Record

Paris	Opponent
6	M. M. I.
0	M. M. I.
0	Georgetown

Starting Eleven

RE - Ross Turpin
 RT - Jim Wills
 RG - Tommy Duke Belt
 C - Tommy Conners
 LG - Bobby Toohey
 LT - Brent Clay
 LE - Joe Mitchell
 QB - Gayle Rees
 HB - Don Beheler
 HB - Bill Bob McIntire
 FB - Paul Sanders



STANDING: Coach Bill Hays, Ross Turpin, Bob Toohey, Tommy Duke Belt, Fred Atkinson, Ronny Myers, Dan Clark, Joe Mitchell, Bill Purcell, Tommy Connors, Tommy McMahan, Larry Jordan, Managers Alfred Vickers and Jimmy Wills. KNEELING: Paul Sanders, Gayle Reese, Don Beheler, Brent Clay, Billy Bob McIntire.

JR. HIGH BASKETBALL

STARTING FIVE

Gayle Reese, Brent Clay, Danny Clark, Billy Bob McIntire, Tommy Duke Belt.

Season's Record

Paris		Opponent
14	M. M. I.	12
22	Mt. Sterling	23
19	Latin	13
27	Cynthiana	17
14	Georgetown	16
25	Winchester	23
12	Lexinton, Jr.	30
18	M. M. I	23
38	Center Hill	22
24	Georgetown	19
12	Mt. Sterling	38
19	Winchester	14
59	Cynthiana	24
42	Latin	28
38	Center Hill	23



OUR FACULTY

F Friends they'll always be

A And the days with them will remain

C Cherished forever in memory

U Until the day when I die

L Little cares they gave to me

T They will pass before my eye as,

Y Years go by.



Miss Noland teaches us to say
Our P's and Q's in the proper way,
Put a comma here - a period there,
Boy, she has a load to bear.
She also teaches us to spell
And before she stops we know them well.

Don't miss a course in History
Mr. Stofer, the teacher, we agree
Is the best fellow that can be found
Any place, this earth around.
He teaches history and modern law,
We think he's perfect without a flaw.

Miss Lavin teaches us the way,
The Romans spoke in their day,
She talks of the great time when,
Caesar conquered the world with his men.
"The Roman Nation was truly great,"
So it says when you translate.

If a foreign language you want to learn
To Miss Woodford you'll have to turn,
She teaches French, Spanish and English too,
How they talked and lived and grew.
She is a good sport and knows how to smile,
So take a Romance Language, it will be worth your while.

Mr. Herron teaches algebra, geometry and Trig;
With a friendly hand and a smile that's big,
And if a problem's got you down,
He'll tell you how the answer can be found.
He always is a lot of fun
Ever ready with a joke or pun.

Tap! tap! tap! what do I hear,
Miss Shaw's typing class must be near,
She teaches typing, bookkeeping and shorthand,
For future secretaries of the land;
And if you want a pencil or a rule
She runs the bookstore before and after school.

I smell a smell. What can it be?
Miss Isgrig is brewing her morning tea,
She's telling the students of a plant or bug,
"Hey John, get your hand out of that jug."
She teaches Physics, Biology and Chemistry,
For future Einsteins to learn, you see.

Although he teaches but one class
Under his feet grows no grass,
Mr. Russell is always on the go,
He seldom rests as we all know,
But he still finds time to be
As friendly a guy as you'll ever see.

SENIOR CLASS PROPHECY

NEWS OF THE FUTURE

Wilma Reynolds has just been made head nurse at St. Joseph Hospital.

Harold Myers recently won the weight lifting contest at Annapolis.

Have you read Jerry's latest article on child care in the magazine "Tree Trunk"? This magazine is owned and edited by Frederick Burns and Zeke Clay.

The Woodford-Arnsparger Riding Academy has recently opened.

'The Shamrock' has reopened under the management of Dude Hennessey.

Dan Fryman has just been given the Nobel Award for his famous invention of reclining desks for use in school rooms.

Evelyn Johnson has accepted a position at the Sanders Transfer Lines as secretary to the owner.

Jimmy Summerlin has just been acclaimed leading folk singer of the nation. At the present time he is on a tour in the Kentucky Mountains collecting ballads.

Margaret Russell has recently won the National Baton Twirling crown with an amazing exhibition of her skill.

The Osbornes and Stewarts get together quite often to play Canasta. Mrs. Osborne is the former Mary Lou Dockenbrode and Mrs. Stewart is the former Wilma Turner.

Mr. and Mrs. Nelson Bishop (Mrs. Bishop is the former Anna McCord) have just opened a fish hatchery.

Dr. Ruby Arnsparger has recently opened her office in the National Bank Building and had as her first patient Miss Mary E. Isgrig.

Carolyn Marshall seems to be very happy with her new job as Latin teacher of P. H. S.

Did you see the headlines about Eugene Cain being picked as basketball player of the year? He is now playing with the Olympians.

I see where Will G. has consolidated a chain of grocery stores into his trucking and livestock company.

Harry B. has just returned from the army and taken over the management of the J. C. Penney Company.

Miller Doyle has moved to Canada and is now the sole



owner of the Canadian Wheat Corporation.

Charles Anderson has graduated from commerce school and is now head bookkeeper of the Sears Farm Department.

Joe Anderson has received the Nobel Award for outstanding work in the field of Science.

Mr. and Mrs. Joe Shriver (former Nancy Greenup) have added several new stores to their chain of dry cleaning establishments.

Barbara and Jimmy have opened a new store combining both groceries and pool.

David and his wife Patsy have moved to Massachusetts to take over the Colt Firearms Company.

Malcolm Doyle's Radio Company seems to be making much progress in a new field of Television.

Mr. and Mrs. Frank Hazelrigg (former Phyllis Caywood) have just built one of the nation's most modern homes.

Miss Jean Mansfield has taken over the job of head dress designer for Vogue Magazine.

Congratulations to Kelly on having just been made manager of Schines Amusement Corporation.

Hazel has just returned from a concert tour through the New England states.

Bobby Burden and family have left for North Carolina to start a new tobacco plant.

Word has been received that Bobby Richardson has won the National Billiard Championship.

Dudley Boyle has been promoted to chief Math. Professor at the University of Kentucky.

Barbara, Martha, and Norma have opened a cosmetic factory in Paris.

Eddie Wells has received a commission in the United States Air Force and plans to make it his career.

Robert Thomas has just been elected the outstanding hunter of the year. He gained his title through catching five Schmoos.

Alice Fuller has been named the best dressed woman of the year.

Betty Langels has accepted a position as secretary at Claiborne Stud.



WHO'S WHO OF 1950

Who's the tallest	Harold Myers
Who's the shortest	Wilma Turner
Who's the sweetest	Norma Hon
Who's the most all round	Malcolm Doyle
Who's the quietest	Zeke Clay
Who's the tightest.	Larry Hennessey
Who's the class crooner	Kelly Smith
Who's the class singer.	Hazel Green
Who's the shiek.	Daniel Fryman
Who's the girl most likely to succeed	Ruby Ann Arnsperger
Who's the boy most likely to succeed	Charles Anderson
Who's the best dressed girl	Jerry Jackson
Who's the most popular girl.	Barbara Jordan
Who's the most popular boy	Eugene Cain
Who seems to be the laziest	Nelson Bishop
Who's the smartest	Evelyn Johnson
Who's the neatest	Alice Fuller
Who's the most boastful	Robert Thomas
Who's the most vocational minded boy	David Feld
Who's the best looking girl	Nancy Greenup
Who's the most bashful	Betty Langfels
Who's the slowest	Margaret Russell
Who's the best dressed and cutest boy	Harry B. Smart
Who's the most mannerly boy	Miller Doyle
Who's the best looking boy	Joe Shriver
Who's the most flirtatious	Jimmy Summerlin
Who's the speediest	Dudley Boyle
Who's the most talkative boy.	Bobby Richardson
Who's the most care free	Betty Woodford
Who's the most sports minded girl	Diane Arnsperger
Who's the most patriotic	Eddie Wells
Who's the best groomed boy.	Will G. Florence
Who's the chemistry shark	Joe Anderson
Who's the best sport	Bobby Burden
Whose smile is the most catching	Mary Lou Dockenbrode
Who's the most marriage minded.	Phyllis Caywood
Who's the best dancer	Fred Burns
Who has the best figure	Ann McCord
Who gets mad the easiest.	Carolyn Marshall
Who gets around the most.	Martha Mattox
Who's Miss Noland's pet	Barbara Hazelrigg
Who's the best artist	Jean Mansfield
Who's the most ineffectual	Wilma Reynolds







1. Hazel Green
2. Bobby Richardson
3. Jerry Jackson
4. Betty Woodford
5. Evelyn Johnson
6. Nelson Bishop
7. Wilma Reynolds
8. Eugene Cain
9. Martha Mattox
10. Nancy Greenup
11. Barbara Hazelrigg
12. Carolyn Marshall
13. David Feld
14. Wilma Turner
15. Malcolm Doyle
16. Norma Hon
17. Bobby Burden
18. Daniel Fryman





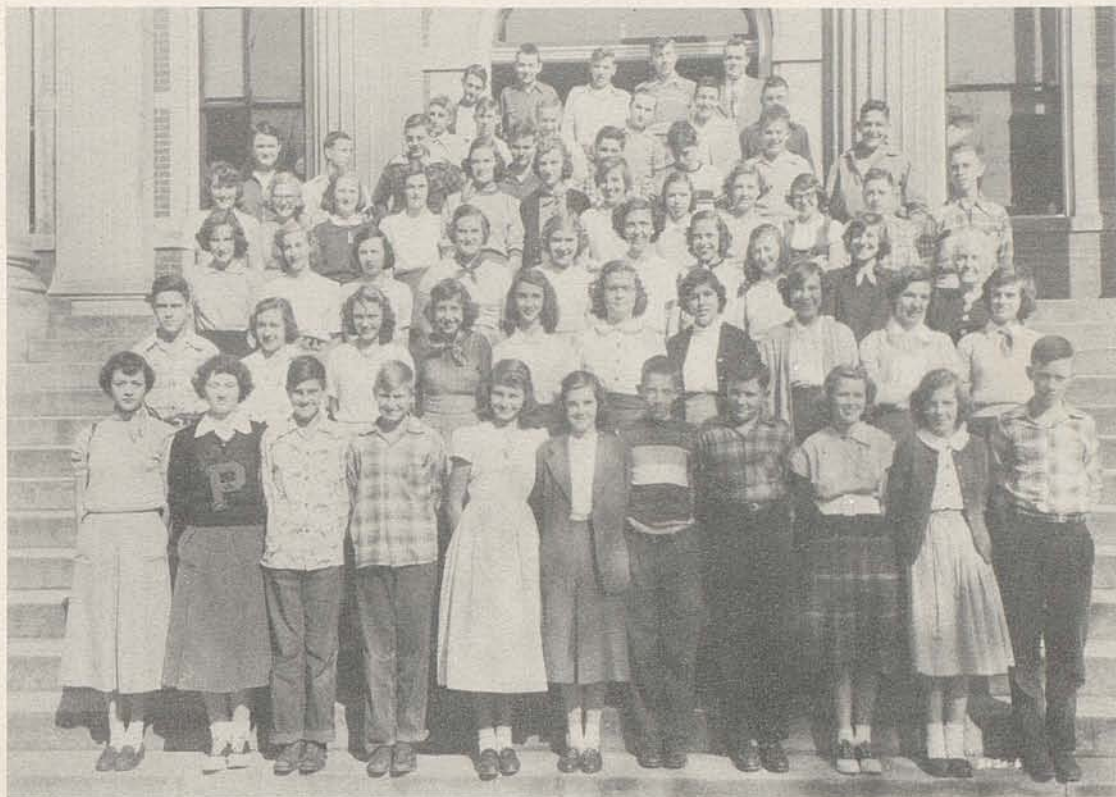
1. Ruby Arnsperger
 2. Diane Arnsperger
 3. Joe Anderson
 4. Miller Doyle
 5. Charles Anderson
 6. Barbara Jordan
 7. Mary Lou Dockenbrode
 8. Alice Fuller
 9. Anna McCord
 10. Robert Thomas
 11. Margaret Russell
 12. Betty Langfels



JR. HIGH CLASS OFFICERS

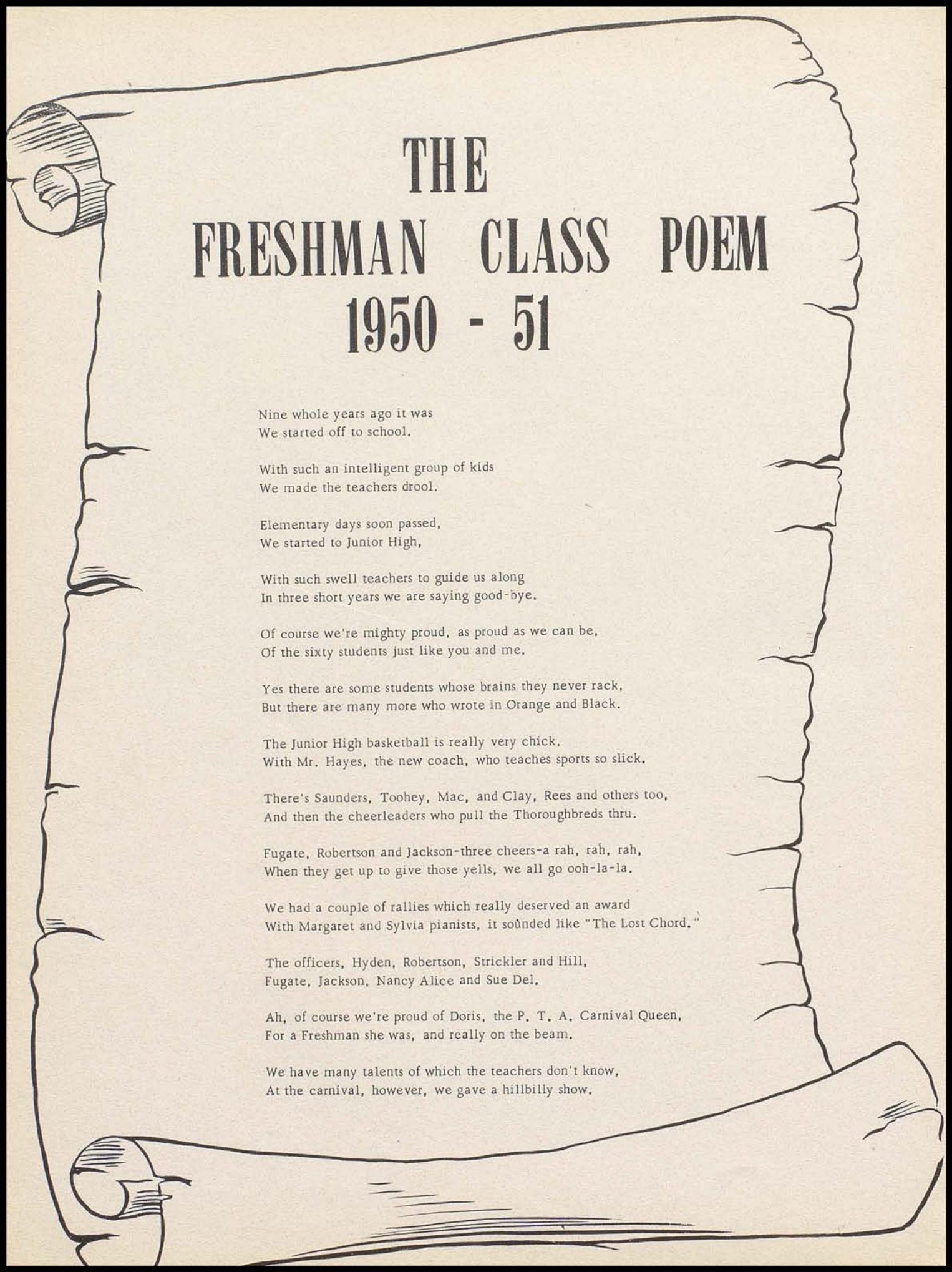


FRESHMAN CLASS ROLL



Virgil E. Arnold
 Mary Elizabeth Booth
 Sue Del Campbell
 Jerry Owen Carr
 Helen Jean Christopher
 Brent Arnold Clay
 Danny Miles Clark
 Nancy Barkley Clayton
 Shirley Kay Clough
 Thomas Baldwin Conner
 Mareese Dee Downing
 Ruth Elkins
 Marjorie Louise Elvove
 Jeanette Hogan Ewalt
 Billy Bob Filer
 Temple Yvonne Fishback
 Jo Ann Fugate
 Betty Lou Garrison
 Nancy Alice Harney
 John W. Hadley
 Elise Hunley Hill
 Peggy Elaine Horton
 Inez Faye Humphries
 Margaret Holton Hyden
 Janice Pauline Jackson
 Marion Arthur Johnson
 Ruth Jones
 Billy Gay Jones
 Barbara Louise Jones
 Anna Frances Jones

Dorothy Mae Keal
 Charles E. Leeds, Jr.
 Wilma Joyce Lowry
 Charles Lee Roy Linville
 Robert Thomas McCord
 Billy Bob McIntyre
 Betty Faye Marshall
 Bobby Ray Mays
 Joe Morton Mitchell
 Milton Wright Moreland
 Stoner Parsons
 Myrtle Kathleen Poters
 Gayle H. Rees
 James Howard Riddle
 Katie Elizabeth Rison
 Doris Harriet Robertson
 Wilma Jean Rogers
 Johnny Allen Rowe
 Nelson Lake Sadler
 Paul Brooks Sanders
 Phyllis Marie Scott
 Sylvia King Strickler
 Robert Eugene Toohey
 Reva Mae Turner
 Alfred Turner Vickers
 Margaret Jeanette Wells
 Donald Nelson Wells
 Nellis Mae Whalen
 James Leslie Wills
 Lucy Ferguson Worick



THE FRESHMAN CLASS POEM 1950 - 51

Nine whole years ago it was
We started off to school.

With such an intelligent group of kids
We made the teachers drool.

Elementary days soon passed,
We started to Junior High,

With such swell teachers to guide us along
In three short years we are saying good-bye.

Of course we're mighty proud, as proud as we can be,
Of the sixty students just like you and me.

Yes there are some students whose brains they never rack,
But there are many more who wrote in Orange and Black.

The Junior High basketball is really very chick,
With Mr. Hayes, the new coach, who teaches sports so slick.

There's Saunders, Toohey, Mac, and Clay, Rees and others too,
And then the cheerleaders who pull the Thoroughbreds thru.

Fugate, Robertson and Jackson-three cheers-a rah, rah, rah,
When they get up to give those yells, we all go ooh-la-la.

We had a couple of rallies which really deserved an award
With Margaret and Sylvia pianists, it sounded like "The Lost Chord."

The officers, Hyden, Robertson, Strickler and Hill,
Fugate, Jackson, Nancy Alice and Sue Del.

Ah, of course we're proud of Doris, the P. T. A. Carnival Queen,
For a Freshman she was, and really on the beam.

We have many talents of which the teachers don't know,
At the carnival, however, we gave a hillbilly show.

With each Junior High teacher we get along real swell,
Except the dashes we make at the sound of the noon time bell.

We enjoy Junior chorus and also our work in speech,
We also try to learn what the teachers try to teach.

Of course we're in the stage - where the lassies like the lads,
And boys as well as girls go in for stupid fads.

We lost a few to Bourbon Vocational High,
We sure miss them - we mustn't tell a lie.

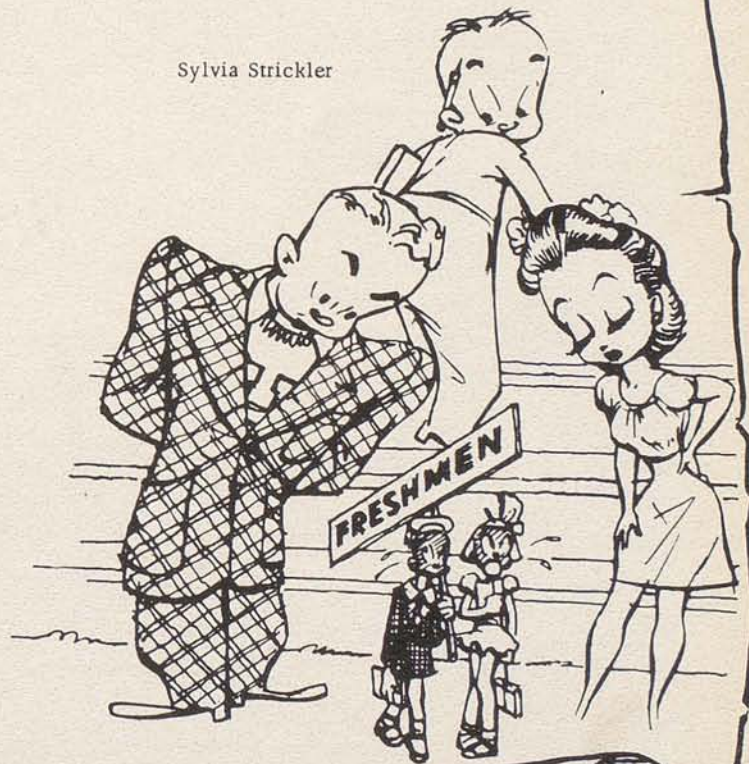
Just before Christmas, we were feeling "mighty low,"
But then of course we all cheered up at the first sight of mistletoe.

We struggled through exams, then cheered up for you see
Our average was a fat, big letter, it's known as, whew a D.

Yes, we'll all be so excited 'a marchin' down the aisles,
It's not a weddin' friends. We've passed the first two miles.

We'll get those certificates on that bright and sunny day,
Watch out Senior Hi - cause we're bound to come your way.

Sylvia Strickler



EIGHTH GRADE



Margaret Anderson, Charles Atkinson, Roddy Bailey, Nancy Ballard, Donald Beheler, Tommy Belt, Freddie Bratton, Marion Browning, Rosemary Butler, Billy Clough, Billy Collier, Patsy Crump, Bobby Dotson, Patty Dotson, Betty Jean Edwards, Glendon Elam, Marilyn Elvove, Joyce Ervin, Donald Farris, Volney Ferguson, Helen Frakes, Tommy Fullington, Phyllis Gilvin, Jimmy Greer, Billy Jo Harney, Jean Harney, Bettie Bruce Hall, Bonnie Hause, Marylyn Hurst, Paul Humphrey, Helen Jefferson, Barbara Jones, Shirley Jones, Dabney Johnson, Larry Jordan, Mary Frances Justice, Barbara

Lawrence, Terry Lenox, Eddie Lykins, Ava Mae McCann, Nancy McConnell, Eleanor McCord, Esther McDaniel, Tommy McMahan, Betty Maxwell, Alvin Maye, Carol Anne Meringer, Bertha Myers, Ronnie Myers, Linda Nolan, Billy Purcell, Jewell Reed, Jerry Robin, Janet Shout, Rose Carol Shumate, Patty Smith, Shirley Stanforth, Dennis Spivey, Bobby Taylor, Jane Turpin, Ross Turpin, Junior Warren, Charlotte Waugh, Joyce White, Alice Wigglesworth, Joe Wigglesworth.
TEACHERS: Miss Lovell, Miss McClintock, Miss Mitchell.

EIGHTH GRADE POEM

We the eighth grade of Paris Junior Hi
Pause to say "hello" to you,
Although we have worked and tried and tried
We still have lots of things to do.

Our days are full of a number of things
Such as maps and those equations,
And when we're finished with Latin endings
We start on conjugations.

In studying we all try to do our part
And many made honor rolls,
The carnival, sports, music and art
Show that these too are our goals.

And when it comes to speech contests
There are many who enter in,
With poetry, posters and all the rest
They all try their best to win.

The teachers all work together
And help us to do our best,
So that is why, we all do try
To make this eighth grade a success.



Harry Edward Archbald, Anne Barnett, Jimmy Dale Clark, Berle Clay, Betty Brown Davis, Susan Day, Besty Doyle, Laura Sue Ewalt, Norman Filer, June Florence, Patsy Ruth Flynn, Kay George, Bobby Jo Hudnall, James Holder, Sara Hyden, Sarah Humphrey, Laura Judy, Doris Jones, Garlon Jordan, Sarah Kearns, Russell Kenney, Pattie Leeds, Larry Myers, George Mann, Buddy Magee, Janet Maye, Betty Million, Carolyn Ann Moore, Odell Mitch-

ell, Ann Morris, Billy Pitts, Henry Peters, Ralph Parsons, Vera Puckett, Warner Rankin, William Rison, Carl Ryan, Bobby Dean Rankin, Jacquelllyn Rigert, Robert Ricci, Billy Ragland, Frances Richardson, Emma Jean Shelburne, Lillard Shelley, John Stewart, Bobby Slack, Jan Smits, Anne Thompson, John Tucker, Jane Carroll Toohey, Marium Thomas, Floyd Townsend, Thomas Turpin, James VanMeter.

SEVENTH GRADE

We like Junior High very much even though we are the youngest members.

We think our teachers are great.

There are sixty members of the seventh grade divided into three home rooms with Miss Brown teaching us English and history, Mr. Hays teaches us our science and also coaches our football and basket ball teams. Our Arithmetic teacher is Miss Purnell with Miss Mitchell teaching us our Geography.

The seventh grade has two cheerleaders who are Jane Toohey and Anne Barnett.

We participate in all Junior High Activities and always have met our quota in Polio funds, Community Chest and Junior Red Cross.

It is a great pleasure to be in Junior High.



ORANGE AND BLACK

Orange and Black is the honor society of Paris Junior High School. This very inspirational and impressive ceremony, at which time those students selected for the honor of writing their names in the book, had its origin in 1928, just twenty-three years ago.

The students are selected from each of the three Junior High groups by the faculty on the basis of scholarship, loyalty, leadership, activities, attitude, character, cooperation, and courage. The emblem which is a four-leaf clover having the letters S, A, L, and C stands for these qualities. It is an attempt to emphasize, encourage and recognize these traits which enter into the making of worthwhile citizens of the future.

In looking back over the long list of names enrolled in the Orange and Black Book over these twenty years, we see very few who have failed to live up to their trust. There are some who gave their all in the last great war. There are well known lawyers, scientists, educators, West Point and Annapolis graduates, Phi Beta Kappas in colleges all over the country and many highly respected and useful citizens in the communities where they are now living.

This class of 1951 has had an especially

honored place in the annals of the book. They have played an important part in scholastic achievement, speech work, athletics, musical events, and helpful activities of the school. It will be of great interest to watch their successes and accomplishments in the future.

Those in the class of 1951 whose names appear in the book are: Wilma Turner, Carolyn Marshall, Hazel Green, Jerry Jackson, Barbara Jordan, Ruby Arnsparger, Nancy Greenup, Evelyn Johnson, and Dudley Boyle.

FRESHMEN:

Ann Richardson, Joann Ingles, Jennie Florence, Samuel Reynolds, Nancy Bishop, Carolyn Collier, Frances Doyle, Nancy Leek, Carolyn Bowling, Barbara Shelley, Catherine Nagle, Ellen Clay Clinkenbeard.
8th GRADE

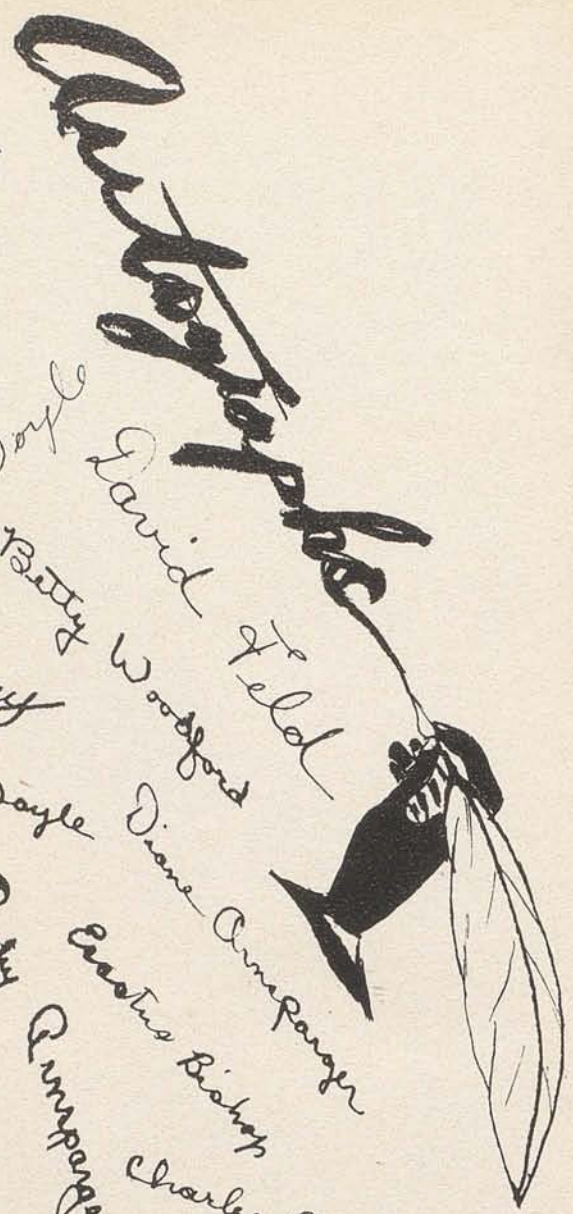
Sylvia Strickler, Elise Hill, Mary Booth, Jo Ann Fugate, Sue Del Campbell, Margaret Hyden, Danny Clark, Nancy Harney, Nellie Whalen, Lucile Clay, Sue Watlington, Mary Augusta Clay, Bettie Turney, Joyce Lowry, Jeanette Ewalt.

7th GRADE

Nancy Ballard, Jean S. Harney, Patricia Dotson, Alice Wigglesworth, Bonnie Hause, Marilyn Elvove, Shirley Stanforth.



Daniel Fryman
 Bobby Burden
 Kelly Smith
 Joe Anderson
 Robert Thomas
 Will H. Florence
 Harold Myers
 Zeb Clay
 Dudley Boyle
 David Field
 Malcolm Doyle
 Larry Hennessy
 Betty Woodford
 Joe Shriver
 Miller Doyle
 Diane Amstrong
 Jerry Jackson
 Eugene Cain
 Fred Burns
 Carolyn Marshall
 Margaret Russell
 Hazel Green
 Ernestus Bishop
 Charles Anderson
 Harry B. Smith
 Mary Lou Dockenbrock
 Wilma Lee Turner
 Jimmy Summerlin
 Bobby Richardson
 Betty Langfells
 Martha Lee Mattox
 Evelyn Johnson
 Phyllis Ann Caywood
 Barbara Ann
 Harghigo
 Norma Hon
 Wilma Reynolds
 Barbara Jordan
 Alice Myers, Fuller
 Leanne Mansfield
 Emma McLeod



Sell You

TOBACCO

at

PARIS, KY.

The only market in the State to lead
the entire Burley Belt seven out of ten.

THERE IS A REASON WHY

This market has nine (9) modern, well-lighted
warehouses, with floor space for ten thousand
baskets, and all sold every five days.

TAKE YOUR CHOICE AND TRY TO GET IN

The Farmers Tobacco Warehouses

Phone 422

The Paris Tobacco Warehouses

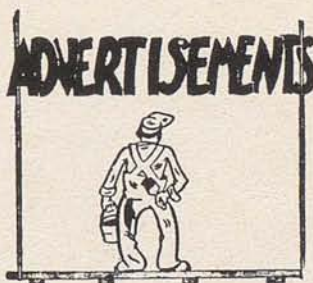
Phone 1275

The Independent Tobacco Warehouses

Phone 1198

Virgil E. Arnold
Mary Elizabeth Booth
Sue Del Campbell

Dorothy Mae Keal
Charles E. Leeds, Jr.
Wilma Joyce Lowry



THANKS TO YOU

Our Patrons and Advertisers

WILSON BROTHERS

Appliances - Hardware - Implements

Phone 164

Paris, Kentucky

"Let's Build Together"

SHEELER LUMBER COMPANY

500 Phones 300

The Buildings We Build - Build Our Business

Compliments of
BOURBON LUMBER CO.
Incorporated
A. B. Hancock, President

Compliments of
ARDERY'S DRUGS
Phone 50 Cor. 7th & Main

Compliments of
BOURBON HATCHERY
and
"BALLARD AND BALLARD"

Compliments of
J. C. PENNEY CO.
'Where a nation shops and saves'

The City of Paris is always willing to co-
operate with our schools in their undertakings.

CITY of PARIS, KENTUCKY
Geo. L. Doyle - Harold E. Bell - Wm. Brophy - W. S. Chisholm

Chrysler - Plymouth
Sales - Expert Service
Genuine Chrysler Corp. Parts
BALDWIN MOTOR COMPANY
813 Main St. Phone 510
Paris, Ky.

Compliments of
BRENT & COMPANY, INC.
Paris, Ky. Phone 14 & 15

SMART AND WAUGH
Hay Grain
Limestone Spreading
Phone 611 & 1101-J

WESTERN AUTO ASSOCIATE STORE
Edwin "Kirk" Kirkpatrick, owner
Paris, Ky.

<p>Compliments of SAMUEL MILNER</p>	<p>W. C. & F. N. DALBY New York Life Insurance Company P.O. Box 195 Phones: 918 & 1331-R</p>
<p>Compliments of ROSE ANN BEAUTY SALON Mrs. Gladys Butler, Mgr.</p>	<p>Compliments of BOURBON LOCKER PLANT</p>
<p>Congratulations Seniors PARIS ROTARY CLUB</p>	<p>GRAY'S BARBER SHOP 338 Main Street</p>
<p>Compliments of PARIS GARAGE Buick - International Trucks 4th & Pleasant St. Phone 566</p>	<p>Compliments of LARKIN'S INSURANCE AGENCY 508 Main St. Phone 88</p>
<p>Compliments of CLIFTON MARKET Jerry Jordan, Proprietor</p>	<p>Compliments of ROBERT VAN METER</p>
<p>Compliments of NICK'S RESTAURANT</p>	<p>Compliments of TOWN AND COUNTRY Mrs. Tillie F. Judy, Mgr.</p>

Compliments of
THE NATIONAL BANK AND TRUST
COMPANY OF PARIS

"The Friendly Bank"

Best Wishes

from

HANSLEY MILLS

A Good Place To Work

Compliments of
ARNSPARGER INSURANCE AGENCY

Lucien M. Arnsperger
James L. Arnsperger
W. Coleman Burke
Walter E. Deering, Jr.

Compliments of
THE CITY CLUB

Compliments

William S. Morgan, M.D.

Cars
Implements



Trucks
Tractors

SOUSLEY MOTORS

8th & High St.

Phone 1550

Compliments of
BROPHY'S ELECTRIC SHOP
Crosley Refrigerators

J. FARRIS ADAMS
"Your Office Supply & Equipment Dealer"
"As Near as Your Phone"
Phone 42 Paris, Ky.

Compliments of
THE BOURBON HOTEL
Mr. & Mrs. Theodore Butler, Sr.

Compliments of
JOHN CRAIG AND GEORGE LA FRANA

Known For Better Values
Lerman Bros.
Cash Department Store
Paris — Kentucky

Compliments Of
Bourbon Agricultural Bank
and
Trust Company
"The Bank of Service"

Pipes Chevrolet Company

SALES  SERVICE
Phone 532

Compliments of
JACK COHAN
Crown Jewelers
615 Main St. Paris, Ky.

DAVIS FUNERAL HOME
"Now in our 103 year of service"
Phone 137 Paris, Ky.

SUMMERHAYES LUMBER & COAL CO.
1318 S. Main St. Paris, Ky.

<p>"If It Comes From Davis—It Is Right"</p> <p>J. W. DAVIS & CO.</p> <p>GOOD CLOTHING ALWAYS</p>	<p>Congratulations Seniors</p> <p>BELL - GOODMAN</p> <p>Paint, Roofing Supplies</p> <p>12 W. 6th St. Paris, Ky.</p> <p>Phone 318</p>
<p>Compliments of</p> <p>DR. AND MRS. J. P. SHIPP</p>	<p>HOTEL BALDWIN</p> <p>Paris Civic, Business and Social Center</p>
<p>OWENS & TAYLOR MARKET</p> <p>Groceries - Fresh Meats</p> <p>We Deliver</p> <p>Phones 93 & 1850</p> <p>Paris, Ky.</p>	<p>Compliments of</p> <p>PARIS MONUMENT WORKS</p> <p>Paris, Kentucky</p>
<p>Compliments of</p> <p>THE KENTUCKIAN - CITIZEN</p> <p>" Since 1807 a voice of the Bluegrass</p>	<p>FARRIS PHOTO STUDIO</p> <p>Portraits - Kodak Finishing</p> <p>512 Main St. Paris, Ky.</p>
<p>Compliments of</p> <p>COLONIAL MOTEL</p> <p>Mr. & Mrs. Jones Kerr, Propr.</p>	<p>HUSTON AND DOYLE</p> <p>Plumbing and Heating</p> <p>So. Main St. Paris, Ky.</p>
<p>FOOKES' GROCERY</p> <p>Groceries - Select Meats</p> <p>Fresh Fruits & Vegetables</p> <p>Phone 1372</p> <p>400 W. 2nd Street Paris, Ky.</p>	<p>Chrysler - Plymouth</p> <p>Sales - Expert Service</p> <p>Genuine Chrysler Corp. Parts</p> <p>BALDWIN MOTOR COMPANY</p> <p>813 Main St. Phone 510</p> <p>Paris, Ky.</p>

Est. 1866

Phone 288

SHIRE & FITHIAN

"The House Of Quality

JEWELRY AND GIFTS

SMITS GREENHOUSE

FINE FLOWERS

EXPERTLY ARRANGED

Phone 915

West Second St.

F. C. JOHNSTON — WELDING

and

MACHINE SHOP

WOODFORD SPEARS & SONS

KENTUCKY BLUE GRASS SEED

A GOOD SCHOOL —

A GOOD STUDENT BODY —

A GOOD FACULTY

THE A. J. WINTERS CO.

Jewelers

LUCKY'S MACHINE SHOP

EXCAVATING — WELDING

WRECKER SERVICE

Lilleston Avenue

Paris, Ky.

Raymond E. Turner

HINTON-TURNER FUNERAL HOME

Phone 55

Paris, Ky.

Compliments

of

VARDEN & SONS

Compliments Of

VOGLER DRUG CO.

"The REXALL Store"

PARIS, KENTUCKY

C. ERNEST MARTIN
for

Your Real Estate and Insurance Needs

PHONES: Office 663—Residence 888-J

PARIS, KY.

"The Best Town In America"

WOLLSTEIN'S

"Everything Men and Boy's Wear"

PHONE 40

PARIS, KY.



**BOURBON
PRODUCE CO.**

J. H. EVERMAN, PROP.

DEALERS IN

POULTRY, EGGS AND HAMS

DRESSED FOWLS A SPECIALTY

TELEPHONE 990

"We Deliver"

<p>PARIS HARDWARE & IMPLEMENT CO.</p> <p>The Farmer's Store Phone 214 420 Main St.</p>	<p>R. L. FILER AUTO BODY SHOP</p> <p>Dependable Auto Painting, Upholstering and Body Service. "We take the dents out of accidents" 130 W. Eighth Street Paris, Ky.</p>
<p>Compliments Of</p> <p>WHEELER FURNITURE CO.</p> <p>Incorporated</p> <p>530 Main St. Paris, Ky.</p>	<p>Compliments Of</p> <p>KENTUCKY UTILITIES CO.</p> <p>Incorporated</p>
<p>Compliments Of</p> <p>GRINNELL DRY CLEANING</p> <p>622 Main Phone 793 Paris, Ky.</p>	<p>GILBERT LYTTLE</p> <p>MEATS — GROCERIES</p> <p>Corner 10th and Main Phone 20</p>
<p>Compliments Of</p> <p>BEN COHEN SHOE STORE</p> <p>609 Main Street</p>	<p>DAUGHERTY PAINT & SUPPLY</p> <p>D. T. McCracken PAINT and WALLPAPER Glass - Alsco Storm Sash - Doors 434 Main Phone 231 Paris, Ky.</p>
<p>HALL'S MARKET</p> <p>Collins Hall, Propr. We Deliver GROCERIES - MEATS - FRUITS VEGETABLES Phone 442 14th & Main</p>	<p>Furniture - Stoves - Rugs</p> <p>DORSEY FURNITURE CO.</p> <p>We Deliver</p> <p>302 Main Phone 36</p>
<p>FRED ATKINSON AND SONS</p> <p>Florists</p> <p>Successors to John Christman Co.</p> <p>26 Nineteenth St, Paris, Ky.</p>	<p>Compliments of</p> <p>THE PEOPLES DEPOSIT BANK</p> <p>And</p> <p>TRUST COMPANY</p>

Compliments of
SCHINE THEATRES

WORICK BROS.
Dodge - Plymouth
Phone 307



Authorized
Frigidaire Dealer

GUDGELL APPLIANCE COMPANY
Noel E. Gudgell
Day Tel. 187 800 Main St.
Night Tel. 971 Paris, Ky.

J. K. GREER
Jeweler - Optometrist
Gifts
604 Main Street

BOURBON LAUNDRY &
DRY CLEANERS

PHONE 4 PARIS, KY.

FORD & CO.
Hardware
Lowe Bros. Paints - China and
Glassware - Pioneer Farm Fence
Sewer Pipe - Iron - Paper Goods
Phone 86 Paris, Ky.

JACK COHAN & SONS

Bostonian Shoes Disney Hats
Phone 535 Paris, Ky.

BOND CLEANERS

Phone 236 10th & Main

ELLIS JEWELERS, Inc.

QUALITY DIAMONDS
NATIONALLY ADVERTISED WATCHES
714 Main Phone 641 Paris, Ky.

CHAS. P. COOK & CO.

Ferndell, Frosted, and S. & W. Foods
PHONES 206-207

COLONIAL MILK PRODUCTS

Pasteurized Grade "A" Milk
Homogenized Milk
Cream Cottage Cheese
Wholesale - Retail
East Main Telephone 39
Main & 8th Telephone 1226

Compliments of

DR. & MRS. B. N. PITTENGER

<p>SPIKES CONFECTIONERY</p> <p>Tasty Sandwiches Soft Drinks</p> <p>Reuben Arnsperger, Propr.</p>	<p>SADLER & COLLINS</p> <p>Plumbing & Heating</p> <p>Main Street Paris, Ky.</p>
<p>Compliments Of</p> <p>GOREY INSURANCE AGENCY</p> <p>"It Pays To Be Insured"</p>	<p>Compliments of</p> <p>LIMESTONE GAS COMPANY</p> <p>Heat with Gas</p>
<p>Compliments Of</p> <p>LITER'S MARKET</p>	<p>RYE'S</p> <p>MISSES' and CHILDREN'S APPAREL</p> <p>405 Main St. Paris, Ky.</p>
<p>MAIN STREET MARKET</p> <p>J. T. Tate & Sons</p> <p>Groceries & Fresh Meats</p> <p>Phone 16 & 1523 Main St.</p> <p>Paris, Ky.</p> <p>We Deliver</p>	<p>Compliments of</p> <p>NATHAN LINVILLE</p>
<p>Compliments Of</p> <p>SMOKE HOUSE</p>	<p>J. HAMLET COLLIER & SONS</p> <p>Refrigerator, Electrical Sales and Service</p> <p>At the business since 1920</p> <p>721 High St. Phone 401-R</p> <p>Paris, Kentucky</p>
<p>OTHER FRIENDS AND PATRONS</p> <div> <p>Lawrence Shoe Repair Shop</p> <p>Santen Auto Parts</p> <p>Strickler Furniture Co.</p> <p>C. W. Johnson</p> <p>City Radio Shop</p> <p>Day's Watch and Clock Repair Shop</p> </div> <div> <p>Bill Daughtery</p> <p>Paris Auto Supply</p> <p>Nancy Lee's Beauty Shop</p> <p>Woman's Exchange</p> <p>Dr. George Gingles</p> <p>Mi-Lady's Beauty Salon</p> </div>	



1951

FINIS

DIPLOMA



MYERS *deep-tone* YEARBOOKS

THE PACEMAKERS OF QUALITY

MYERS AND CO. INC.

TOPEKA, KANSAS

