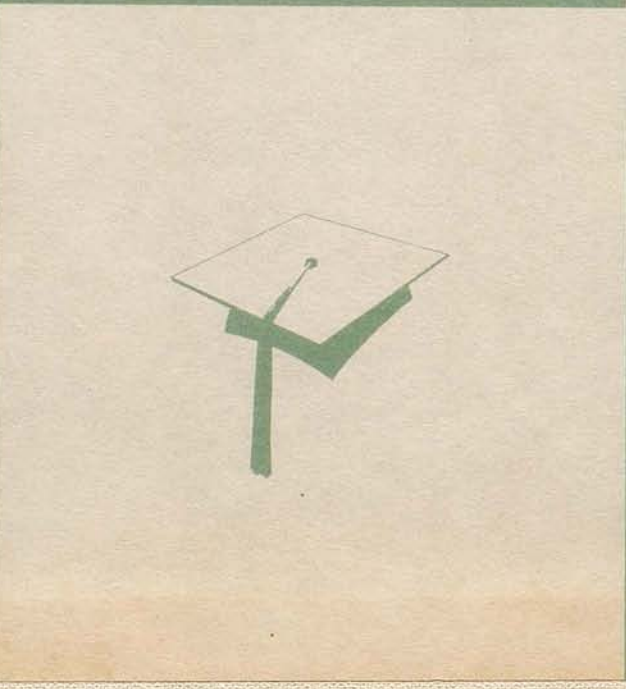
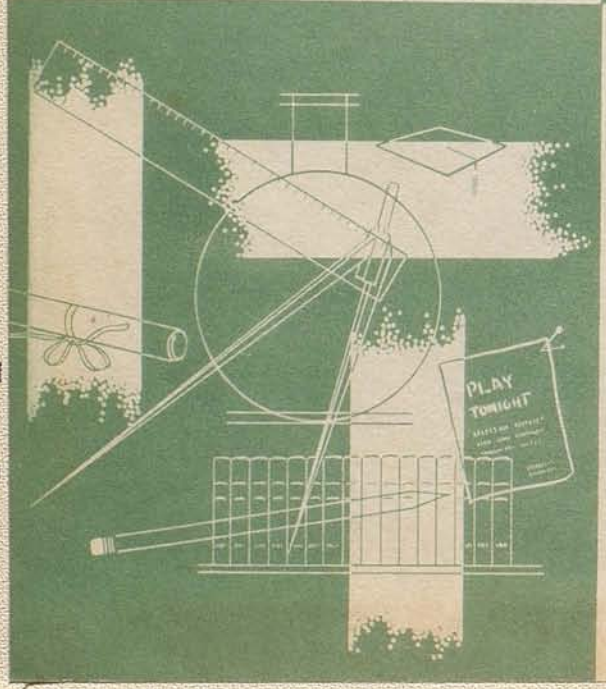
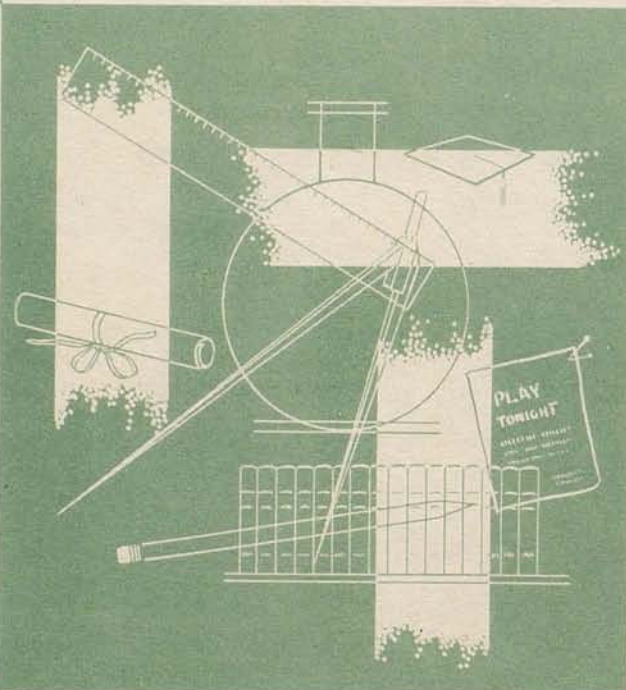
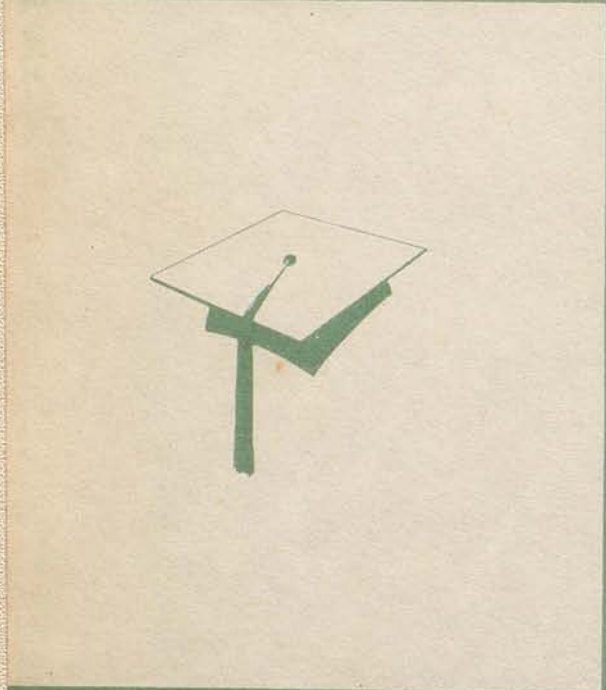
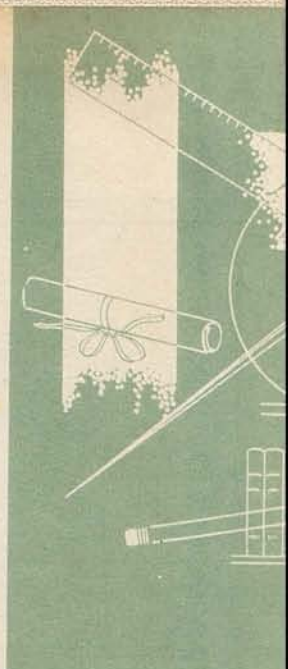
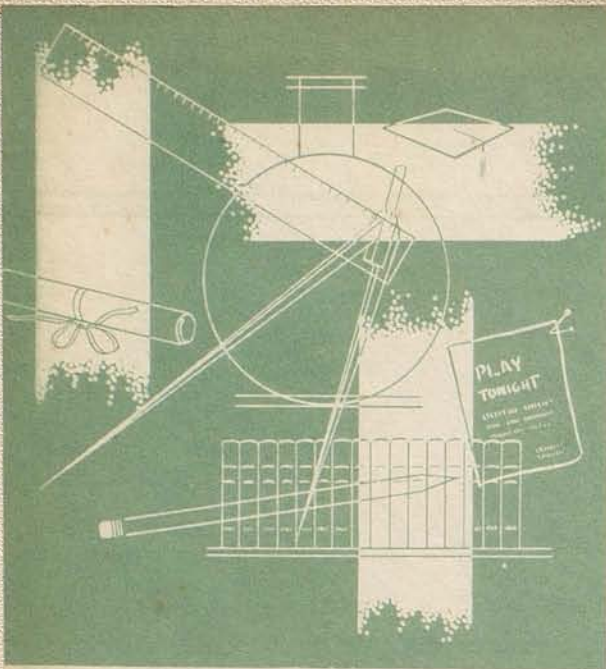
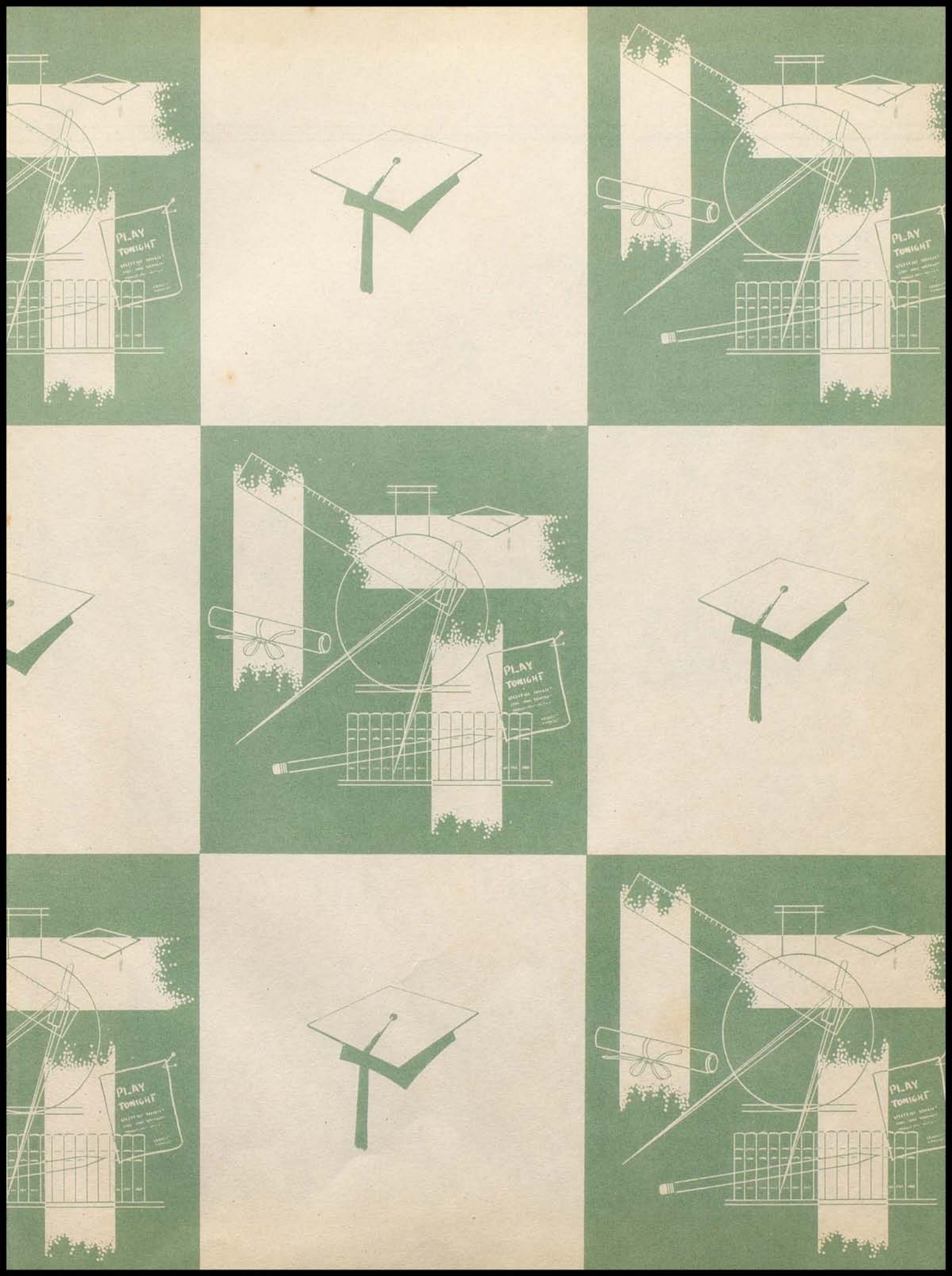


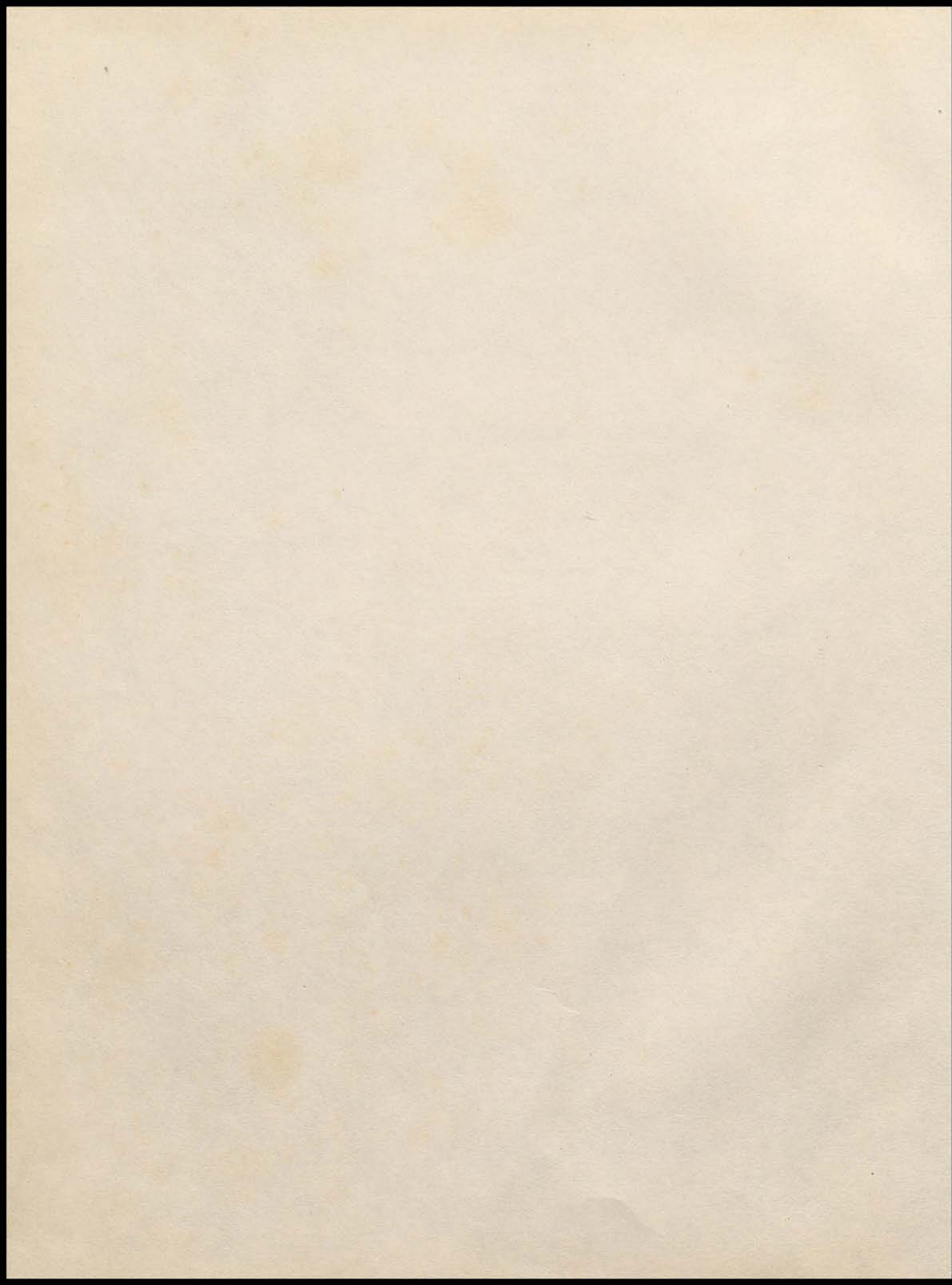
PARISIAN

1952











THE PARISIAN

1952

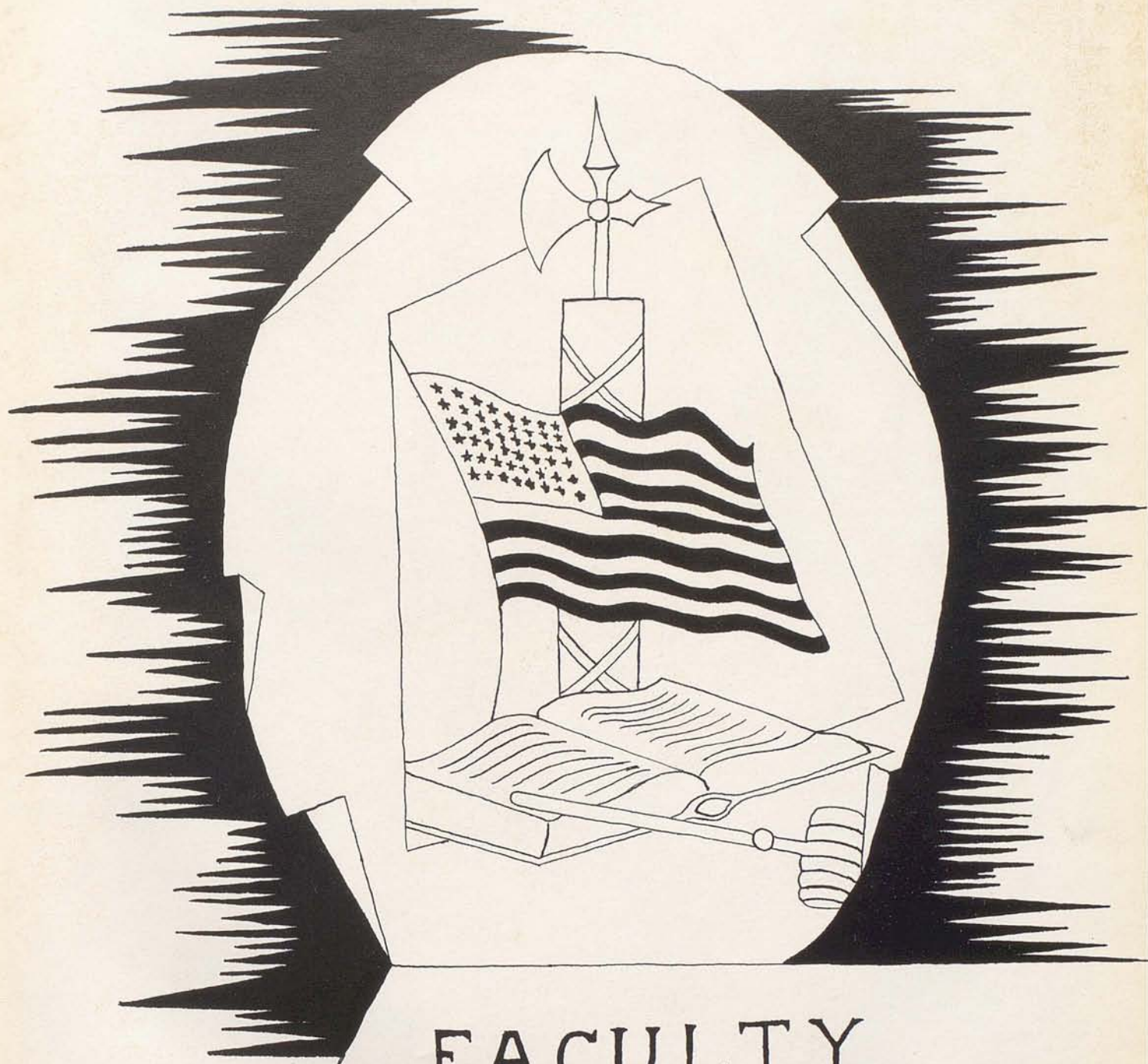
Published by
The Senior Class of
PARIS HIGH SCHOOL
Paris, Kentucky

DEDICATION

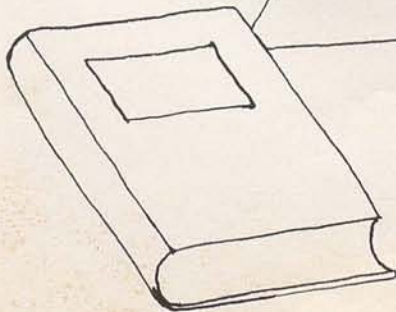


We, the Seniors of nineteen hundred and fifty two, dedicate this annual with grateful appreciation to Miss Zerelda Noland.

Because Miss Noland has enriched our school days and inspired us to higher things of life by her devotion, interest and guidance, we dedicate with deepest love and esteem this 1952-edition of The Parisian.



FACULTY

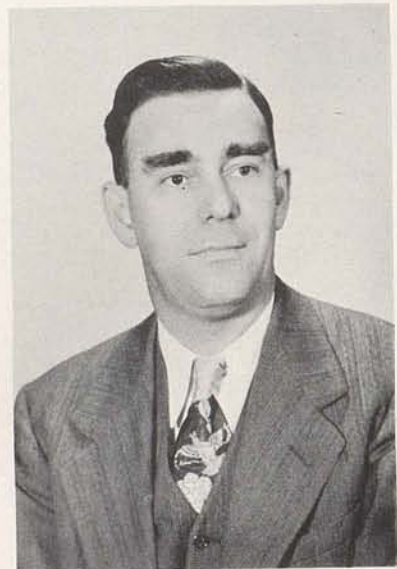


B.W.



LEE KIRKPATRICK
Superintendent
A. B. Georgetown College; M. A.
Columbia University; Graduate
Student Harvard University

WILLIAM F. RUSSELL
Principal
A. B. Centre College;
M. A. University of Kentucky





FACULTY

MRS. DAN PEED
B.S. University of Kentucky
Home Economics

BETSY BROOKS WOODFORD
A.B. University of Kentucky
Romance Languages



ZERELDA NOLAND
A.B. University of Kentucky; M. A.
Columbia University
English

GILBERT LAVIN
A.B. University of Kentucky; M. A.
University of Michigan
Latin



MARY ELEANOR ISGRIG
A.B. University of Kentucky
Science

JOHN MASON
A.B. University of Kentucky
Mathematics





LOIS JEAN WHEELER
A.B. Morehead State College
Area of Concentration in Music



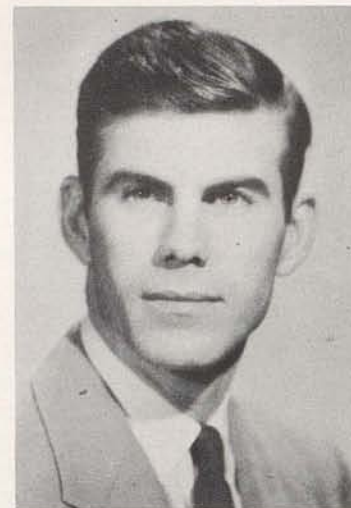
RICHARD STOFER
A.B. University of Kentucky; M. A.
University of Kentucky
History



LOUISE C. CLAY
A.B. University of Illinois
Librarian



BARBARA SHAFER
B.M. University of Kentucky
Music



RONALD ALLEN
A.B. University of Kentucky; M. A.
University of Kentucky
Athletics



HELEN HUNTER
A.B. University of Kentucky; M. A.
Columbia University
History



RAYMOND KRINGS
A.B. Morehead State College
Commercial



WILLIAM HAYS
A.B. Georgetown College
Science

KATHLEEN LOVELL
A.B. University of Kentucky
English



MARY ALMA PURCELL
A.B. Western Kentucky Teachers'
College
English



AGNES PURNELL
A.B. University of Kentucky
Mathematics



ROY REYNOLDS
B.S. Morehead State College
Mathematics



ALICE McCLINTOCK
A.B. Georgetown College; M. A.
University of Michigan
Latin

MARION MITCHELL
A.B. Randolph Macon Woman's College;
M.A. Columbia University
Geography





ANNUAL STAFF

Editor.	George Leer
Asst. - Ed.	Douglas Lawhorn
Business Manager.	Gerald Browning
Layout Editor	Deirdre Nolan
Copy Editor	La Faun Brown
Photo Editor.	Jimmy Myers

OTHER MEMBERS:

Brooks Talley
 Martha Wagoner
 Bill Stamler
 Susan Allen
 Ray Thompson
 Mary Jo Sheeler
 Mary Sue Bell
 Wayne Shumate
 Bruce Forsythe
 Julian McCord
 Wayne Dearing
 Bobby Wills
 Martha Hukill
 Harold Clinkenbeard
 Clara Rinesmith
 Charlotte Curtis
 Jean Pitts
 Carrie Farris
 Dolores Williams
 Lucy Blanton
 Caroline Proc Wood
 Mabel Robb
 Juanita Withers
 Fred Laycock
 Billy Hall
 Tommy Bowling
 June Lawrence
 Patsy Hill

SENIOR CLASS OFFICERS



President	George Leer
Vice-President.	Douglas Lawhorn
Secretary	Deirdre Nolan
Treasurer	Gerald Browning





BILL WEBB

Say, Billy who's the lass,
That keeps you dreaming in history class?
Band 1, 2, 3, 4; Football 1, 2; Math Club 3;
Choir 1; Speech Club 2, 3, 4; Hi-Y 3, 4.

CARRIE FARRIS

She is the leader of our cheers,
At every ballgame, either smiles or tears.
Orange & Black 1; Beta Club 3, 4; Service
Club 4; Parisian Circle 4; Commercial Club
3, 4; Latin Club 1, 2, 3, 4; Class Officer 3;
Choir 2, 3, 4; Glee Club 2, 3; Cheerleader 1,
2, 3, 4; Tri-Hi-Y 2; Junior Chorus 1; Annual
Staff 4.

GERALD BROWNING

Tall, handsome and care-free,
With Mary Sue he's sure to be.
Class Officer 4; Parisian Circle 3, 4; Service
Club 4; Annual Staff 4; Beat Club 3, 4; Latin
Club 1, 2, 3; Romance Language Club 4; Bas-
ketball 1, 3; Orange & Black 1; Commercial
Club 4; Hi-Y 4.

SENIORS



MABEL ROBB

She really does swoon and Pose,
For a handsome athlete named Rose.
Latin Club 1, 2; Commercial Club 3, 4; Glee
Club 2, 3, 4; Home Ec. Club 4; Romance Lan-
guage Club 2, 3; Annual Staff 4.

BROOKS TALLEY

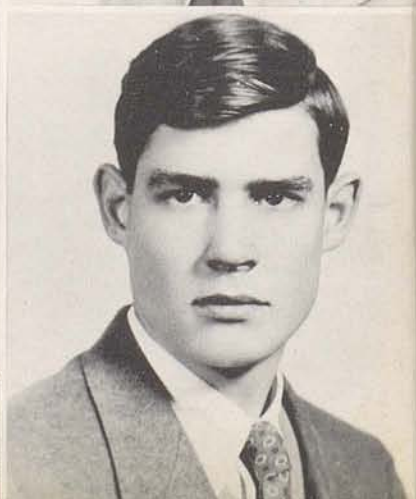
A better scholar could never be found,
And in his car he covers the ground.
Romance Language Club 3, 4; Latin Club 2;
Service Club 4; Parisian Circle 4; Orange &
Black 1; Annual Staff 4; Speech Club 2, 3;
Commercial Club 3.

DOLORES WILLIAMS

She doesn't find it hard to please,
And skims through Latin like a breeze.
Orange and Black 1; Junior Chorus 1; Glee Club
2; Chapel Choir 2, 3; Beta Club 3, 4; Annual
Staff 4; Class Officer 1, 2; Latin Club 1, 2, 3, 4;
Service Club 4; Commercial Club 3, 4.

BILLY TALBOT

Billy, please tell us if you can,
Who you've got your eye on now, young man.
Football 2, 3, 4; Basketball 2, 3; Commercial
Club 3, 4; Latin Club 2; Hi-Y 4.



BRUCE FORSYTHE

In chemistry class he's always snoozin'
Because he had a date last night with Susan.
Football 4; Basketbl 1, 2, 3; Latin Club 2;
Commercial Club 3; Hi-Y 4; Annual Staff 4;
Baseball 4; Orange and Black.

PATSY HILL

You can chant or hum as you sew a seam,
But we sing of Patsy and Johnnie - a real
sweet team.

Service Club 4; Annual Staff 4; Latin Club
2, 3, 4; Orange and Black 1.

DOUGLAS LAWHORN

For he's an athlete, sure and sound
And with the girls he goes to town.
Latin Club 2; Romance Language Club 2, 3;
Service Club 4; Annual Staff 4; Orange and
Black 1; Junior Chorus 1; Beta Club 3, 4;
Class Officer 1, 2, 3, 4; Basketball 1, 2, 3, 4;
Baseball 1, 2, 3, 4; Choir 2, 3, 4; Commercial
Club 4; All State Chorus 2, 3.



SENIORS

CHARLOTTE CURTIS

She's kind, polite, and very sweet.
A nicer girl you'll never meet.
Beta Club 3, 4; Service Club 4; Commercial
Club 4; Glee Club 2, 3, 4; Junior Chorus 1;
Latin Club 2; Annual Staff 4; Orange and
Black 1.

TOMMY BOWLING

He comes up with jokes of all kinds
He's sure to be a comedian some time.
Latin Club 1, 2, 3, 4; Hi-Y 2, 4; Annual Staff
4; Choir 2, 3, 4; Speech Club 2; Math Club
4; Male Quartet 4; Junior Chorus 1.

JUNE LAWRENCE

She's a cute and simple girl,
Who gives the Carlisle boys quite a whirl.
Romance Language Club 3, 4; Glee Club 2,
3, 4; Junior Chorus 1; Latin Club 2; Com-
mercial Club 3, 4; Home Ec. Club 2, 3, 4.

WAYNE DEARING

Football hero of our class
His steady is a Junior lass.
Parisian Circle 2, 3, 4; Latin Club 2; Romance
Language Club 3, 4; Choir 2, 3, 4; Mixed Chor-
us 4; Math Club 4; Basketball 3; Football 2, 3,
4; Baseball 3, 4; Male Quartet 2, 3; Annual
Staff 4; Commercial Club 3.





EDITH MILDRED MOORE

She's quiet and never has much to say,
Just minds her own business and goes her way.
Junior Chorus 1; Romance Language Club 2,
3; Commercial Club 3, 4.

WALTER HERNDON

He and authors differ in only one way,
They write, and he reads what they have to
say.
Latin Club 2.

MARY JO SHEELER

Always in her Buick she does ride,
With some boy by her side.
Romance Language Club 2, 3; Glee Club 2,
3, 4; Annual Staff 4; Home Ec. Club 2; Jun-
ior Chorus 1; Latin Club 1, 2.



SENIORS

DONALD HONICAN

Although red-haired, he's calm, cool and
collected,
When's he's around, Jean is never neglected.
Latin Club 2; Hi-Y 3, 4; Commercial Club
3, 4; Basketball Mgr. 3, 4; Football Mgr. 2,
3, 4.

CAROLINE PROC WOOD

C. P. and Ray make one cute pair,
They're always together in foul weather or
fair.
Beta Club 3, 4; Latin 1, 2, 3, 4; Speech Club
2, 3, 4; Commercial Club 3; Service Club 4;
Annual Staff 4.

BOBBY WILLIS

Here's to Bobby, we give many cheers,
He'll be a great artist in future years.
Latin Club 2; Junior Chorus 1; Commercial
Club 3, 4; Orange & Black 1; Math Club 3,
4; (V. Pres. 4) Hi-Y 4; Annual Staff 4; Ser-
vice Club 4; Choir 3, 4; Basketball 1.

CLARA RINESMITH

When she gives you that attractive smile,
You always stop and chat awhile.
Annual Staff 4; Beta Club 3, 4; Latin Club
1, 2, 3, 4; Speech Club 2, 3; Commercial
Club 3; Parisian Circle 2, 3, 4; Orange &
Black 1; Service Club 4; Glee Club 3; Jun-
ior Chorus 1; Junior Red Cross Representative 2.



HAROLD CLINKENBEARD

Harold is quite the man about town
But where Ann is he's always found.
Latin Club 2; Commercial Club 4; Romance
Language Club 3, 4; Football 1, 2, 3, 4.

MARY SUE BELL

In debate and poetry she does excel,
But it was for Browning, (not a poet,) she
fell.
Annual Staff 4; Service Club 4; Latin Club
1, 2, 3, 4; Beta Club 3, 4; Speech Club 2, 3, 4;
N. F. L. 2, 3, 4; Orange and Black 1; Com-
mercial Club 3; Junior Chorus 1; Tri-Hi-Y 2.

BILLY C. HALL

He likes fruits of all kinds,
But a Georgian peach is the best he can find.
Football 4; Latin Club 2, 3; Math Club 3, 4;
Commercial Club 3; Hi-Y 3, 4.



SENIORS



BLANCHE DOCKENBRODE

In Commercial class she's really a whiz,
And with Arthur she knows her "biz".
Beta Club 3, 4; Service Club 4; Commercial
Club 3, 4; Math Club 4; Junior Chorus 1;
tin Club 2.

BOBBY CAYWOOD

In his green Olds he's really fast,
He's the heartbreaker of our class.
Commercial Club 3, 4; Latin Club 2; Romance
Language Club 3; Hi-Y 2, 3, 4; Basketball 2, 3;
Golf 3; Baseball 4.

PHYLLIS BUTLER

Phyllis Butler is kind of shy
But in History class she's always spry.
Glee Club 2, 3, 4; Junior Chorus 1; Home Ec.
Club 3, 4; Latin Club 2.

FREDDIE, LAYCOCK

Freddie, you know there's a noun called fate,
Is that the reason you're always late?
Football 2, 4; Speech Club 2, 3, 4; N.F.L. 3, 4;
Math Club 4; Junior Chorus 1; Latin Club 1, 2,
3, 4; Annual Staff 4.





CHESTER WIGGLESWORTH
 Chester is the silent type,
 And does his work without a gripe.
 Class President 1; Spanish Club (V. Pres.)
 1, 2, 4; Math Club 4; Annual Staff 4.

DEIRDRE JANE NOLAN
 For her talent and poetry she has won fame,
 Will some lucky boy change her name?
 Annual Staff 4; Beta Club 3, 4; Service Club
 4; Math Club 4; Class Officer 4; Latin Club 2;
 Art Class 3, 4.

BILL STAMLER
 Of our band he is a resident,
 And with the girls he is not hesitant.
 Football 2, 3, 4; Choir 2, 3, 4; Band 1, 2, 3,
 4; Hi-Y 2, 3, 4 (Officer 3, 4); Speech Club 2,
 3, 4; N.F.L. 2, 3, 4; Romance Language Club
 2, 4; Math Club 3, 4; Annual Staff 4; Com-
 mercial Club 3; Debate 2, 3; Male Quartet
 4; U. K. Band Clinic 3.

SENIORS



MARTHA JEAN WAGONER
 She's independent and very gay,
 And has a challenge for each day.
 Annual Staff 4; Beta Club 3, 4; Latin Club 2;
 Service Club 4; Orange & Black 1; Romance
 Language Club 2, 3; Commercial Club 3, 4;
 Junior Chorus 1.

JIMMY MYERS
 Handsome, dashing and debonaire,
 Goes with a girl, blonde and fair.
 Latin Club 2; Romance Language Club 3, 4;
 Commercial Club 3, 4; Math Club 4; Beta
 Club 3; Football 2, 3, 4; Choir 2, 3, 4; Class
 Officer 1, 2, 3; Annual Staff 4; All State
 Chorus 2, 3; Orange & Black 1; Junior Chorus 1.

HELEN SHELburnE
 She sings and the piano she can play,
 But mention Texas and she's on her way.
 Junior Chorus 1; Glee Club 2, 3, 4; Choir 2,
 3, 4; Accompanist 3, 4; Pianist 4; Orange &
 Black 1; Beta Club 3; Home Ec Club 2, 4;
 Latin Club 2; Romance Language Club 3, 4;
 Math Club 3; Service Club 4; Commercial
 Club 3.

RAY THOMPSON
 Better quit your crying girls,
 C. P. is the one who has him in whirls.
 Football 1, 2, 3; Baseball 4; Basketball 1, 2;
 Junior Chorus 1; Latin Club 1, 2, 3; Hi-Y 4;
 Commercial Club 4; Service Club 4; Annual
 Staff 4.



DONALD McCORD

"Mousey" McCord they call him by name,
In Miss Noland's class he's really a brain.
Football 1, 2, 3; Football Mgr. 4; Latin Club
2; Baseball 4; Romance Language Club 4.

La FAUN BROWN

For high school boys she doesn't give a hoot,
She's always looking for a guy named "Doot".
Latin Club 2, 3, 4; Commercial Club 3, 4;
Math Club 4; Beta Club 3, 4; Service Club
4; Orange and Black 1; Junior Chorus 1; Cheer-
leader 1; Home Ec. Club 1, 2; Tri-Hi-Y 1, 2;
Band Sponsor 4; Annual Staff 4.

LOUIS EMMONS

Now Louis, don't you fret,
You'll be a Don Juan yet.
Football 1, 2, 3, 4.



SENIORS

CHARLOTTE LEMONS

Charlotte, tell us if you can,
Who will be that lucky man?
Glee Club 2, 3, 4; Choir 2, 3, 4; Home Ec. 1,
2; Junior Chorus 1; Latin Club 2; Romance
Language Club 3, 4.

EUGENE MAXWELL

He's quiet now and rather shy,
But will he be a Valentino by and by?
Romance Language Club 3; Hi-Y 3; Latin
Club 2; Commercial Club 2, 3, 4; Basketball
3; Baseball 4.

JACKIE HOGAN

This is a little girl named Hogan,
She really goes for a guy named Logan.
Band Majorette-Captain 3, 4; Tri-Hi-Y 2;
Glee Club 2; Commercial Club 3, 4; Home
Ec. Club 1.

GEORGE LUCKY

Now this lad likes Mr. Stofer's class,
Is it because of History or a certain lass?
Latin Club 2.





JULIAN McCORD

Julian is a good guy to have around,
But it's at Vocational that he's usually found.
Latin Club 2; Romance Language Club 3, 4;
Service Club 4; Orange and Black 1; Annual
Staff 4; Junior Chorus 1; Choir 3, 4; Beta
Club 3.

SUSAN ALLEN

Bruce and Susan are never apart,
Sometime her middle name may be Hart.
Cheerleader 1, 2, 3, 4; Choir 2, 3, 4; Glee
Club 2, 3, 4; Home Ec Club 2, 4; Commer-
cial Club 3, 4; Annual Staff 4; Latin Club 2;
Junior Chorus 1.

HENRY CLAY OWEN

In his Buick he takes a ride,
With Jo Ann by his side.
Commercial Club 3; Latin Club 2, 3; Baseball
2, 3, 4; Hi-Y 3, 4.

SENIORS



FAYE MORELAND

She's a very sweet girl, you can't deny
She'll be a Mrs. by and by.
Latin Club 2; Glee Club 2, 3; Home Ec. Club
1, 4; Romance Language Club 2, 3, 4; Tri-Hi-
Y 4.

EDDIE LYONS

On the saxophone he's really ready
And with Sue Del he goes steady.
Soloist 2, 3, 4; Band 1, 2, 3, 4; Choir 4; Com-
mercial Club 4; All State Band 4; Band Offi-
cer 4; Latin Club 2.

JEAN PITTS

She plays the trumpet in our band,
And Don is her admiring fan.
Service Club 4; Commercial Club 3, 4; Latin
Club 2; Beta Club 3, 4; Band 2, 3, 4; Glee Club
2, 3; Annual Staff 4; Home Ec. Club 4; Orange
& Black 1; Romance Language Club 2, 3.

FREDDIE NICHOLS

At 3:15, he's on the run --
To get to Newberry's to have his fun.
Commercial Club 3, 4; Latin Club 1; Math
Club 2, 3; Golf Team.



JUANITA WITHERS

Little, sweet, and full of fun,
With Jimmy she is always on the run.
Glee Club 2, 3, 4; Home Ec Club 1, 2, 4;
Junior Chorus 1; Latin Club 1, 2; Orange &
Black 1; Tri-Hi-Y 2; Commercial Club 3, 4;
Class Officer 2; Annual Staff 4.

WAYNE SHUMATE

Wayne is a character - always horsin' around,
And with a certain gal he's usually found.
Latin Club 2; Commercial Club 3, 4; Foot-
ball 2, 3, 4; Golf 3, 4; Baseball 3; Junior Chor-
us 1; Math Club 3; Annual Staff 4.

LUCY BLANTON

She is quite a gal these days,
She's keeping all the boys in a daze.
Beta Club 3, 4; Latin Club 1, 2, 3, 4; Speech
Club 2, 4; Band 1, 2, 3; Commercial Club 3,
4; Service Club 4; Annual Staff 4; Choir 2,
3, 4; Orange & Black 1; Glee Club 2; Pari-
sian 3, 4.



SENIORS

GEORGE LEER

At basketball he's really ready,
But alas girls, Doris is his steady.
Class President 4; Latin Club 2; Romance
Language Club 3, 4; Annual Staff 4; Service
Club 4; Basketball 3, 4; Football 4; Baseball
3, 4; Math Club 3.

MARTHA HUKILL

In talent and art she has a knack,
She tops the class and that's a fact.
Band 1, 2, 3, 4; Latin Club 1, 2, 3, 4; Com-
mercial Club 3, 4; Romance Language Club
4; Service Club 4; Beta Club 3, 4; Orange
& Black 1; Junior Chorus 1; Art 3, 4.

GEORGE DUNDON

George joined the Navy and put out to sea,
We've missed him a great deal - yes, de-
finitely.

Football 1; Basketball 1, 2, 3; Baseball 2;
Golf 3; Junior Chorus; Romance Language
Club 3; Latin 2; Commercial 3.



SENIOR CLASS POEM

This year presents two silver keys
To graduates of fifty-two,
And one locks the past behind
The other opens futures-new.

For now we've reached the cross-roads
And our paths will separate go
And some will be out on their own
Others seek further to know.

We'll never sit in class again
With members present all
For some will scale the up most heights
But few - we hope - will fall.

But though our hearts with hope are filled
And we look with faith afar,
We realize that without friends
We couldn't be where we are.

And it's not all joy and gladness
That we always thought would be
We review our happy school days
Somewhat sorrowfully.

For now we know these last twelve years
Will be just memories,
And we can't go back and live them
For the doors are locked with keys.

But we plan with faith our future
Hoping every day, thanks to you,
And makes you proud for trusting
in the class of '52.

Deirdre Jane Nolan

JUNIOR CLASS OFFICERS



President	Jimmy Dundon
Vice-President.	Carolyn Bowling
Secretary	Ellen Clay Clinkenbeard
Treasurer	Donald Boyle



JUNIORS

Jimmy Dundon
Audrey Santen
Donald Boyle

Nancy Bishop
Dorothy Fullington
Sammy Reynolds

Carolyn Bowling
Barbara James
George Letton

Dorothy Burris
Glen Wagner
Barbara Rinesmith

Ann Richardson
Billy Langfels
Martha Hudnall

Mary Lou Sadler
Jane Smith
Carolyn Collier

Hart Sledd
Joy West
Barbara McKenzie

Edwin Kirkpatrick
Shirley Cain
Bobby Crump



JUNIORS

Jo Ann Ingles
Billy George
Marilyn Jones

Barbara Sue Whirls
Victor Clark
Eva Puckett

Jimmy Kearns
Betty Mason
Jessie Marie Clark

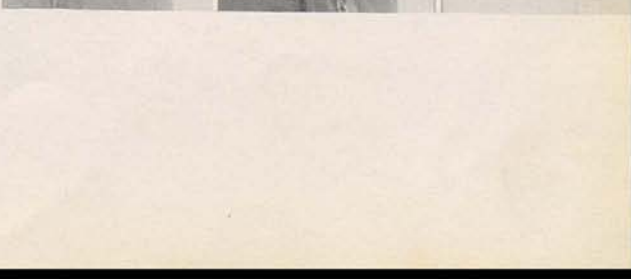
Paul Craycraft
Betty Doyle
Ellen Clay Clinkenbeard

Jennie Jo Florence
Jean Smith
Harold Parsons

Barbara Shelley
Frances Doyle
Harry Galbraith

Lucinda Day
Jake Boyle
Wilma McNees

Barbara Gilvin
Delbert Smith
Elizabeth Nichols





Joan McCord
Eddie Neale
Beulah Saylor

Eunice Warren
Catherine Nagle
Charles Mattox



Elizabeth Scott

THE JUNIOR CLASS

The Junior Class of 1952 is composed of 55 members. The class is divided into two rooms with 28 pupils in each Miss Lavin's and Miss Woodford's rooms.

We are proud of the fact that many of the Junior boys are out for baseball, basketball and football.

Nearly every member of this class belongs to one of the following clubs; Beta Club, Glee Club, Choir, Tri-Hi-Y, Hi-Y, Math Club, Speech Club, Romance Language, and Latin Club.

We of the Junior class are often problems for our teachers but we hope we will become less of a problem as the year goes on.

I am sure that every Junior is proud of his class and is looking forward to next year when we will be Seniors (we hope).

SOPHOMORE CLASS OFFICERS



President	Nancy Harney
Vice-President.	Brent Clay
Secretary	Joyce Lowry
Treasurer	Billy Bob Filer



Janice Jackson
Gayle Rees
Joyce Lowry
Buddy Leeds



Jeanette Ewalt
Nellie Whalen
Nelson Sadler
Betty Faye Marshall



SOPHOMORES



Sylvia Strickler
Donnie Wells
Nancy Clayton
Joe Mitchell



Lucy Worick
Sue Del Campbell
Brent Clay
Suzanne Watlington



Joe Manning
Dorothy Keal
Doris Robertson
John Hadley



Shirley Clough
Marion Johnson
Peggy Horton
Mary Margaret Holbrook



Mareese Downing
Stoner Parsons
Faye Humphries
Tommy Conner



Bobby Toohey
Betty Lou Garrison
Jimmy Wills
Phyllis Scott

SOPHOMORES

Katie Rison
Mary Frances Jones
Bobby McCord
Wilma Rogers



Elise Hill
Billy Bob McIntire
Helen Christopher
Yvonne Fishback



Milton Moreland
Barbara Jones
Alfred Vickers
Mary Booth



Jo Ann Fugate
Billy Bob Filer
Ruth Elkins
Virgil Arnold





Margaret Hyden
Johnny Rowe
Marjorie Elvove

Marilyn Logan



Dannie Clark
Kathleen Peters
Paul Sanders

Reva Turner



Nancy Harney



SOPHOMORE CLASS HISTORY

Here's to the future class of '54
We've come a long way, and now we're Sophomores.

We've been (in)famous since Grade I
For a class that's always having fun.

In time we passed into Junior Hi
That took a lot of work but we finally got by.

Then we sadly left for Senior Hi
Which proved no lark, we cannot lie.

Our teachers all have been so swell
That we've all done surprisingly well.

Fugate and Jackson our cheerleaders keen
In all they do are right on the beam.

"Smilin" Jack Mason is fun you can bet,
He tells corny jokes and you can't make him fret.

But all kidding aside, Miss Isgrig and he,
Are all that we hoped our teachers would be.

We've had a lot of fun this year,
We're one big family,
And we all sincerely hope,
That this will always be.

Nancy Harney
Margaret Hyden





FAVORITES



1. Susan Allen

2. Mary Sue Bell

3. Lucy Blanton

4. Tommy Bowling

5. La Faun Brown

6. Gerald Browning

7. Phyllis Butler

8. Bobby Caywood

9. Harold Clinkenbeard

10. Charlotte Curtis

11. Wayne Dearing

12. Blanche Dockenbrode

13. Louis Emmons

14. Carrie Farris

15. Bruce Forsythe

16. Billy Hall

17. Walter Herndon

18. Patsy Hill

19. Jackie Hogan

20. Donald Honican

21. Martha Hukill

22. Douglas Lawhorn

23. June Lawrence

24. Fred Laycock

25. George Leer

26. Charlotte Lemons

27. Eddie Lyons

28. George Lucky

FAVORITE SAYING

"Yes! !"

"You're really horney"

"I'm so worried"

"Most assuredly"

"Oh! Doot! "

"Ou tik'l me"

"I don't know"

"Hey Goose"

"Glad to see you're back"

"Watch that stuff"

"Aaaah"

"Watch out! "

None

"Stop it"

"You had better believe it"

"I like it"

"I don't smoke"

"Oh! Johnnie! "

"Did you see him look at me"

Anything simple

She just grins

"Crazy North Am. "

"Let's go to Carlisle"

"That took skill"

"Where's Doris?"

"Hi Honey"

Just grins

"I can't see that"

FAVORITE ACTIVITY

Cheerleading

Gerald

Collecting former Seniors

Getting laughs
Admiring football

Imitate 13

Listening to Mr. Stofer

Going to North Middletown

Take trips to Florida

Dancing to "Because of You"

Squeaking shoes

Dating Arthur

None

Blushing

Patrolling tree-trunk

Hobbies (with skirts)

Smoking

Daydreaming

Flirting

Can't tell

Going to the A & P

Basketball

Running around

Arguing

Basketball

Boys! !

Playing the saxophone

Speeding

AMBITION

Wants her middle name to be Harte

To weight 125

Never go steady again

Comedian

To go to Univsesity of Kentucky

To be a man

History teacher

Assistant Kroger mgr.

Be a student at at Tampa

To take a trip up North

To grow

To change her name

To go back to the moon

Be manager at 10 cent store

Kroger mgr.

To break 40 in his car

To smile

Grow tall

To forget men

To be one of the boys

Journalist

To be or not to be

To live in Carlisle

Famour orator

Horse doctor

To be a Sophomore again

Band leader

To build a round house



FAVORITES

1. Eugene Maxwell

2. Donald McCord

3. Julian McCord

4. Mildred Moore

5. Faye Moreland

6. Jimmy Myers

7. Freddie Nichols

8. Deirdre Noland

9. Henry Clay Owen

10. Jean Pitts

11. Clara Rinesmith

12. Mabel Robb

13. Helen Shelburne

14. William Stamler

15. Billy Talbot

16. Brooks Tally

17. Ray Thompson

18. Billy Webb

19. Chester Wigglesworth

20. Bobby Wills

21. Juanita Withers

22. Caroline Proc Wood

23. Mary Jo Sheeler

24. Wayne Shumate

25. Martha Jean Wagoner

26. Dolores William

FAVORITE SAYING

"Look at my muscles"

Anthing useless
"It wasn't me"

"Slowpoke"

"You think I care"

"Boy, I'm really in there"

"Chicken salad"

"You know"
"He is quiet"

"He makes me so mad"

"Jiminy Crickets"

"I like him"

"Oh, 'Miss Schafer"

"It's sexy"

"My wife's home"

None

"Yes man"

"Cut the bull"

"Woe is me!"

"Who me?"

"Zat right?"

"Oh, my gosh"

"Gads"

"Hi, honey!"

"Hey"

"Icky"

FAVORITE ACTIVITY

Lifting weights

Complaining
Dating Vo-Hi girls
Reading

Working at Newberry's
Blondes

Doin' nothing

Drawing
Cheerleader

Band

Working puzzles
U. K. basketball
Writing letters
Flirting

Keeping up with fads
Typing
C. P.

Sleeping
Early bird
Collecting money
Sitting in Ardery's

Talking to Ray
Going to Millersburg
Horsin around
Flirting

Drinking tea

AMBITION

To be a wrestler
To graduate
To be another Clark Gable
Captain in Air Force

To be a housewife
To have a faithful woman

To win jackpot and retire
Teacher
To be assistant mgr. of 10¢ store
To be in Air Force

To be a doctor
To raise Roses
To go to Texas
To be another Harry James

To forget??
To write legibly
To get car three nights a week
To find romance
To take a book test
To thrill the girls
Make natural shrine of rock quarry.

Get Ray to shave
Teach at M. M. I.
To marry a blonde
To be a preacher's wife

To go to England





BABY DAYS



Mary Jo



June



Dolores



Henry



Tommy



George Lucky



Bill S.



Doug



Donald



Jean



Deirdre



Martha



Lucy



Juanita



Jimmy

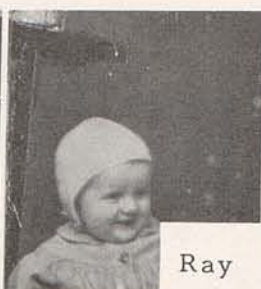


Chester

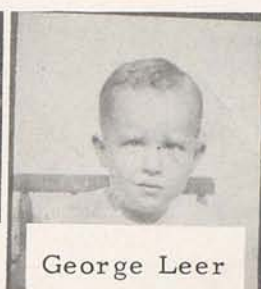
BABY DAYS



Charlotte



Ray



George Leer



Mabel



Phyllis



Susan



Billy T.



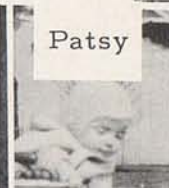
Jackie



Freddie



Mary Sue



Patsy



Julian



La Faun



Gerald Eugene



Clara



Bobby W.



BABY DAYS



Billy H.



Caroline



Mildred



Freddie N.



Walter



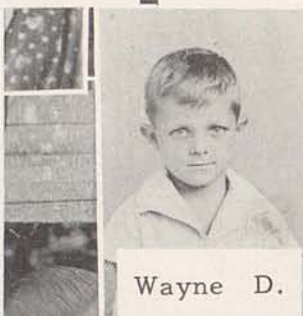
Donald M.



Martha W.



Blanche



Wayne D.



Charlotte



Eddie



Bobby C.



Faye



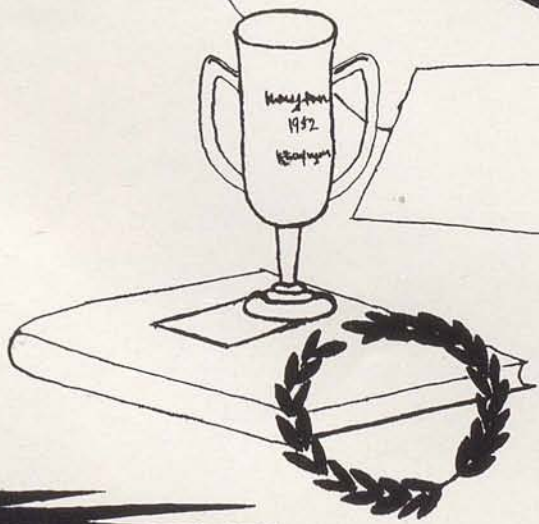
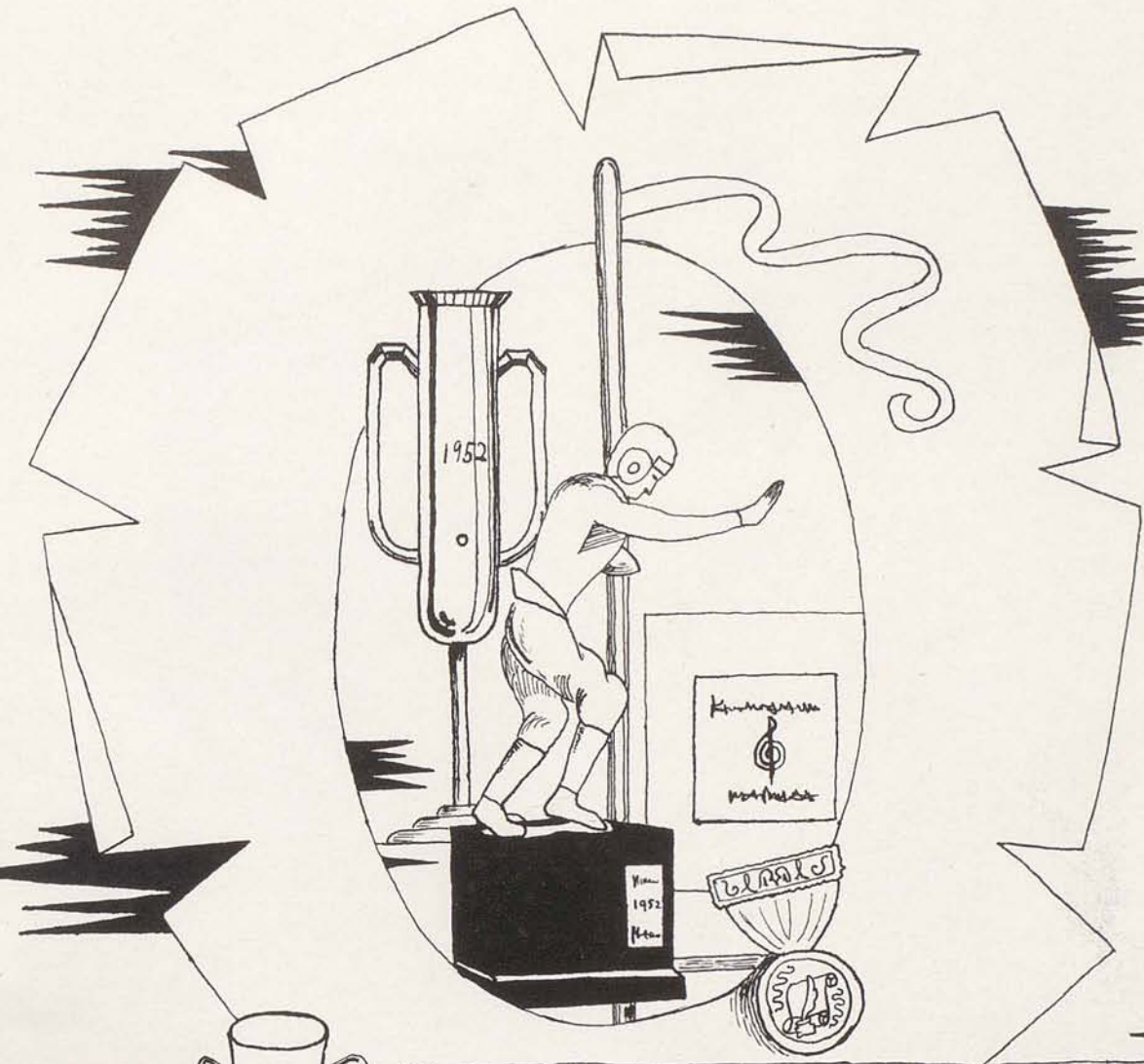
Brooks



Helen



Bruce



SPORTS

B.W.



FRONT ROW: Coach Ronnie Allen, Bill Stamler, Sam Reynolds, Bruce Forsythe, Louis Emmons, Fred Laycock, Brent Clay, Wayne Shumate, Assistant Coach Bill Hays. SECOND ROW: Jimmy Dundon, Ross Turpin, Bobby Toohey, Johnny Rowe, Donald Beheler, Jake Boyle, Billy Hall, Wayne Dearing, Jimmy Wills. THIRD ROW: Donald McCord, Manager, Milton Moreland, Joe Mitchell, Tommy Connors, George Leer, Nelson Sadler, Billy Talbot, Hart Sledd.



Leer



Emmons



Forsythe

FOOTBALL



Shumate



Hall



Laycock

Stamler



Talbot



Dearing





Glen Wagoner



George Leer



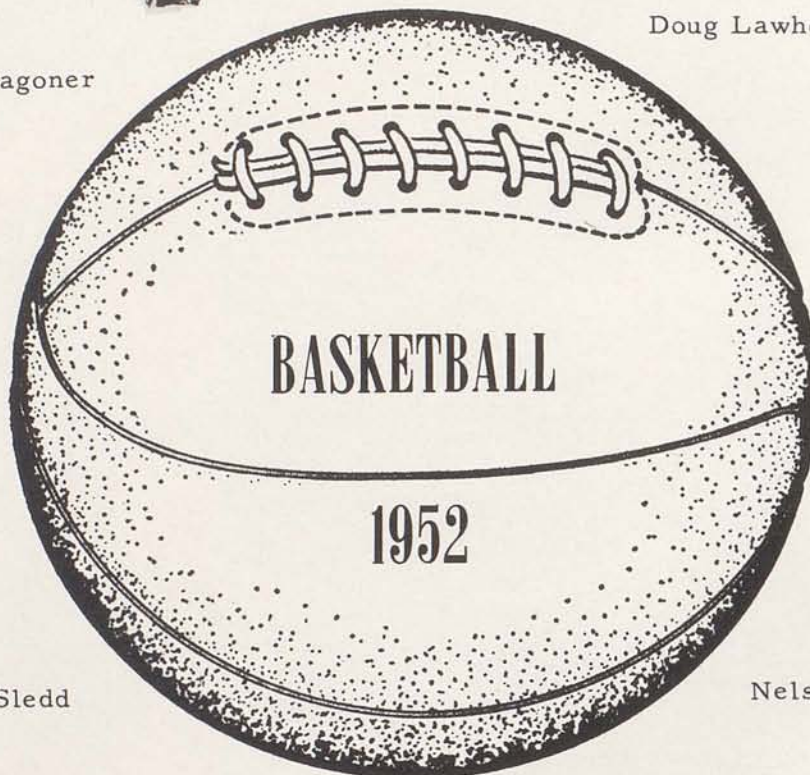
Doug Lawhorn



Gayle Rees



Hart Sledd



Nelson Sadler

Bobby Crump



Donnie Wells



Billy George



Brent Clay





FRONT ROW: Leer, Lawhorn, Wagoner, Rees, Sadler, Sledd, Coach Allen. SECOND ROW: Clark, Clay, Crump, Wells, George, Rowe. THIRD ROW: Honican-manager; Connors, Neale, McIntire, Sanders, Toohey, Turpin, Reynolds-manager.



Ronnie Allen,
Coach



Sam Reynolds and
Donald Honican,
Managers

SEASON'S RECORD

Paris	Opponents
32	Harrison County 30
44	Winchester 39
43	M. M. I. 42
58	Carlisle 26
36	Maysville 46
39	Lafayette 45
63	Cynthiana 48
45	Bourbon Vocational 43
36	Ashland 71
35	Georgetown 34
53	Bourbon Vocational 29
41	Shelbyville 34
40	Clark County 80
41	Mt. Sterling 49
49	Bracken County 33
38	Lafayette 63
57	Winchester 39
46	Maysville 68
35	Mt. Sterling 38
36	Cynthiana 30
47	Ashland 41
41	Georgetown 47
34	Clark County 63
	C. K. C. TOURNAMENT
33	Stanford 37
	DISTRICT TOURNAMENT
30	North Middletown 21
43	M. M. I. 52
	REGIONAL TOURNAMENT
73	Orangeburg 42
46	Bracken County 48

Yea - Orange
Yea - Black
Fight - Fight - Fight



Here's to Paris Greyhounds
Nothing they lack
Dressed in those colors
Of ole Orange and Black
Here's to Captain George
Well can we see,
Leading our team
Right on to victory.

Susan
Allen

Fight - Paris - Fight!
Fight - Paris - Fight!
Fight! Fight! Fight!



Janice
Jackson



Jo Ann
Fugate



Joan
McCord



Oh, when you try to beat old P. H. S.
You're going to have a hard time, well I guess
We're going to yell, yell, yell, we'll yell, we'll yell
For Paris High School team we'll yell, we'll yell
We're going to fight, fight, fight for every goal,
What we'll do to that team ain't half told.
We'll knock the pep out of them, well I guess,
Yes! Yes! Yes! - Rah! Rah! Rah!

Let's go, let's go, let's go, go, go
Let's fight, let's fight, let's fight, fight, fight
Let's win, let's win, let's win, win, win

Lucinda
Day



Betty Brown
Pennington,
Sponsor

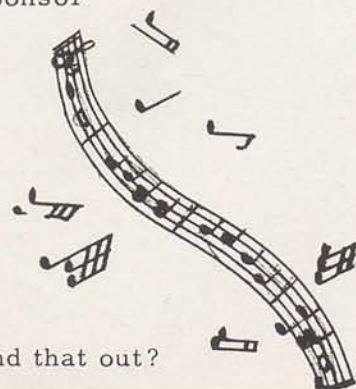


Carrie
Farris

P - A - R - I - S,
P - A - R - I - S,
P - A - R - I - S,
Paris! Paris! Paris!

My girl's from old K - Y
She goes to Paris High
She is a queen o'mine
I'm telling you.

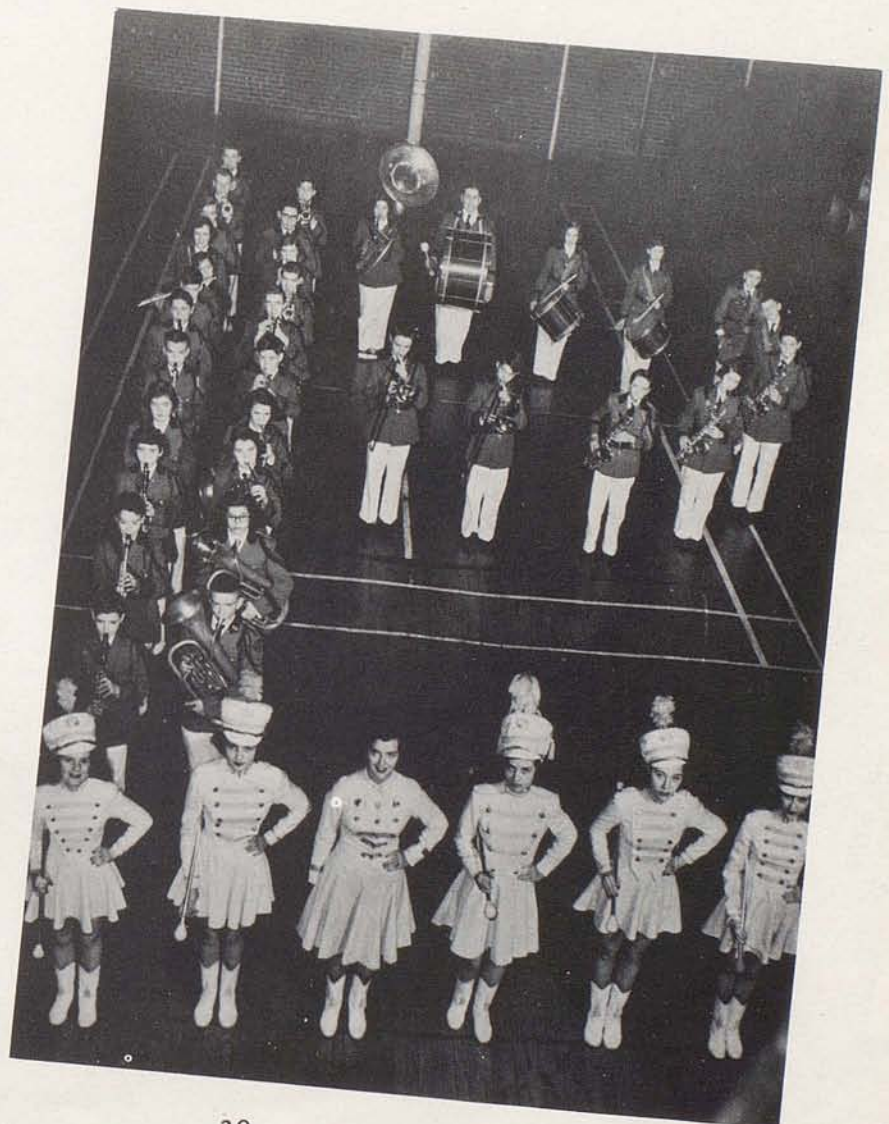
And in my future life
She's going to be my wife!
How in the world did you find that out?
She told me so!



BAND

During the second year of Miss Wheeler's leadership, the High School Band has progressed in both number and ability. In addition to the usual music, several clever skits were enacted during the halftimes of the football and basketball games. It participated in the State Music Festival, the annual Spring music program, and produced, for the first time in some years, its own concert. The organization of a junior group assures trained personnel for future growth.

Eddie Lyons-President
Sue Del Campbell-Vice President
Linda Nolan-Secretary & Treasurer



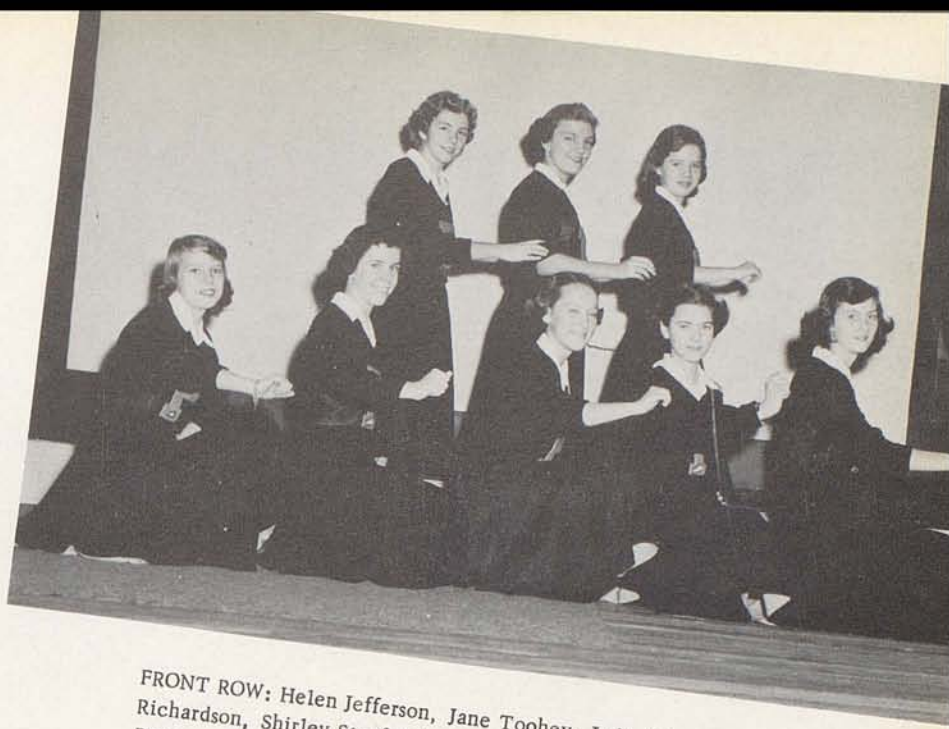


MAJORETTES

Billy Jo Harney
Jennie Joe Florence
Sylvia Strickler
Carolyn Bowling
Jackie Hogan



CHEERLEADERS



FRONT ROW: Helen Jefferson, Jane Toohey, Judy Allen, Frances Richardson, Shirley Stanforth. BACK ROW: Jane Florence, Rosemary Butler, Rebecca Gaitskill.

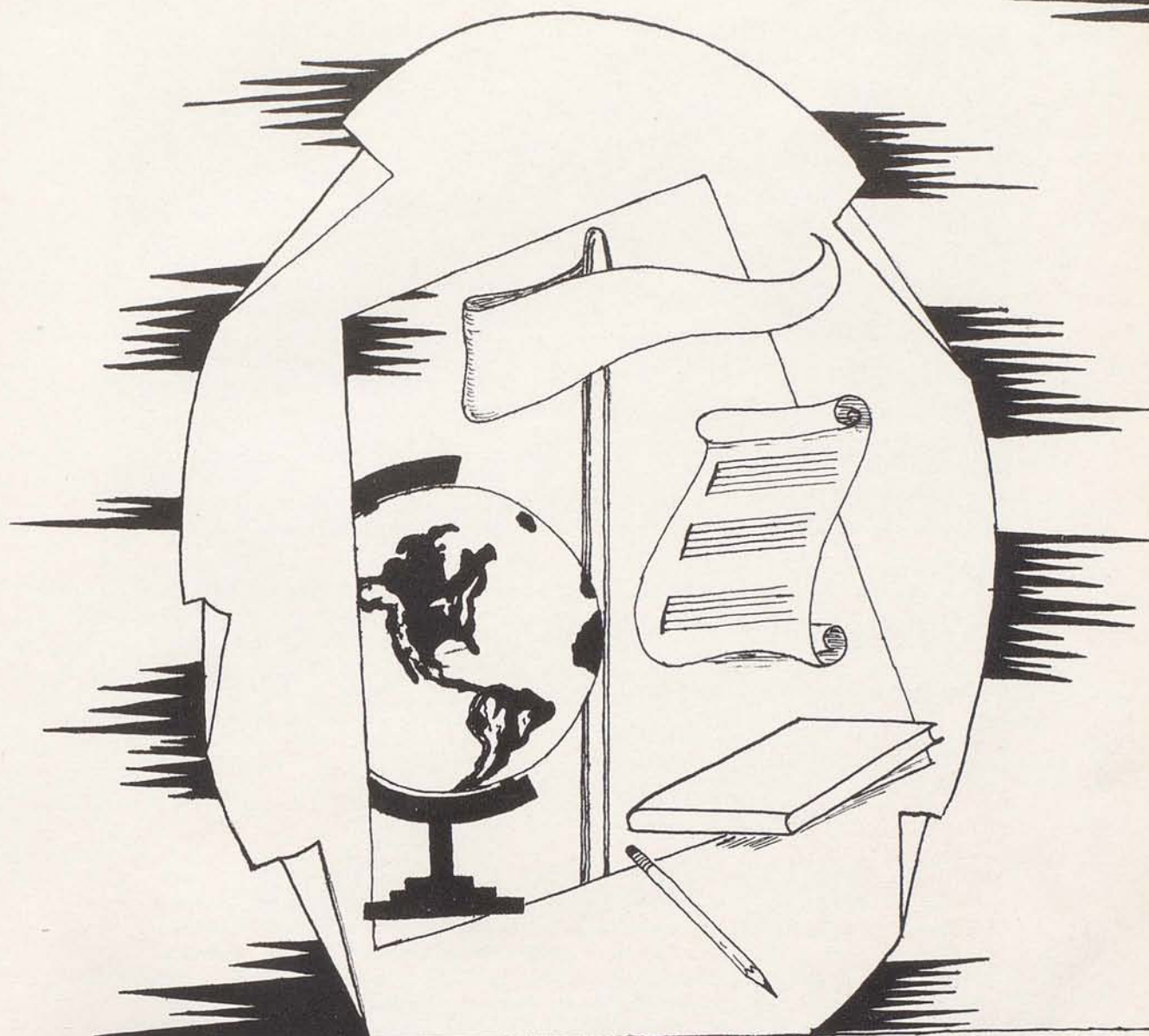
JUNIOR HIGH BASKETBALL TEAM

FRONT ROW: McMahan, Beheler, Belt, Atkinson, Purcell. BACK ROW: Coach Hays, Vickers-manager, Crump, Smits, G. Jordan, Ricci, T. Turpin, Stuart, Dotson, Kenney, Ferguson, Jefferson, Elam, L. Jordan, Tucker, White, Wigglesworth, Hamrick, Myers, Gaitskill-manager.



SNAPS





ORGANIZATIONS

B.W.

PARISIAN CIRCLE



The Parisian Circle is an honor organization made up of two Sophomores, four Juniors, and six Seniors with high scholastic standings. Membership in this organization is one of the highest honors given in Senior High School. This club stands for the principles of honor, and high scholastic achievement. SENIOR MEMBERS: Lucy Blanton, Gerald Browning, Wayne Dearing, Carrie Farris, Brooks Talley, Clara Rinesmith. JUNIOR MEMBERS: Nancy Bishop, Donald Boyle, Jimmy Dundon, Ann Richardson. SOPHOMORE MEMBERS: Mary Booth, Gayle Reese.

THE SERVICE CLUB

The Service Club is an honorary organization of Paris High School. It is based on leadership, character, and scholastic standing. The club is mainly under the direction of Mr. Kirkpatrick.

The main duties of the Service Club are to assist the teachers whenever possible, entertain visitors and to help at our ball games.

FRONT ROW: Patsy Hill, Charlotte Curtis, Martha Wagoner, Dolores Williams, Deirdre Nolan, Clara Rinesmith, La Faun Brown. SECOND ROW: Helen Shelburne, Jean Pitts, Blanche Dockenbrode, Carolyn Proc Wood, Lucy Blanton, Mary Sue Bell, Carrie Farris, Martha Hukill, Julian McCord. THIRD ROW: Ray Thompson, George Leer, Douglas Lawhorn, Gerald Browning, Bobby Wills, Chester Wigglesworth.



LATIN CLUBS



JR. - SR. - SOPH.

The Senior Latin Club is composed of members of the Junior and Senior Classes. The club holds regular monthly meetings. The purpose of the club is to provide outside activities for Latin students and to present programs for the club and the school.

Latin Week is celebrated during the second week of April. The convention of the Junior Classical League held at the University of Kentucky is always attended by many Paris Latin students.

The motto is: *Esse quam videri* - To be rather than to seem.

The Sophomore Latin Club carries on its own activities but joins with the Junior-Senior Club for many occasions. Programs are usually presented by these clubs at Christmas and during Latin week.

The motto of the Sophomore Latin Club is: *Labor omnia vincit* - Labor conquers all.

The sponsor of both clubs is Miss Gilbert Lavin. OFFICERS: (Junior-Senior) President, Carrie Farris; Vice President, Mary Sue Bell, Secretary, Lucy Blanton; Treasurer, Nancy Bishop. (Sophomore) President, Mary Booth; Vice President, Marilyn Jones; Secretary, Nancy Harney; Treasurer, Mareese Downing.

ROMANCE LANGUAGE CLUBS

The Romance Language Club consists of the French and Spanish students. Its purpose is to interest its members in the customs and language of the French and Spanish speaking countries.

Miss Betsy Brooks Woodford is the sponsor of the club. OFFICERS: President, Wayne Dearing; Vice President, Jimmy Myers; Secretary, Carolyn Bowling; Treasurer, Gerald Browning.



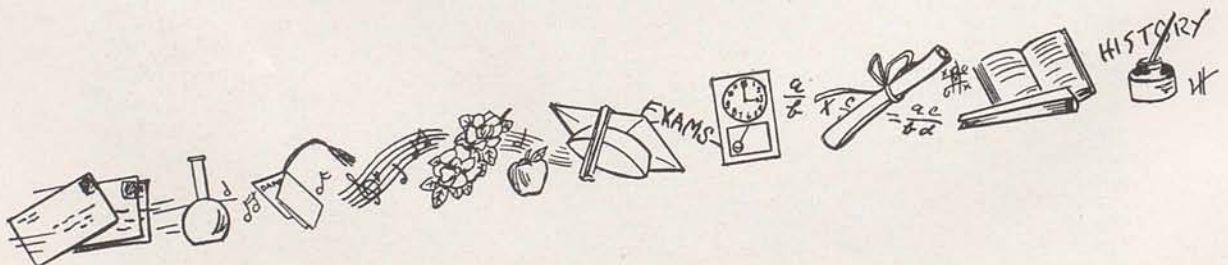
BETA CLUB



The Beta Club is a chapter of the National Beta Club. The club has twenty-eight members. This year the members of the club helped to organize a chapter at Bourbon Vocational High School. For this service we received a banner from the National Club.

The Beta Club acts as a service organization and assists at many school functions during the year. The officers of the Beta Club are:

Mary Sue Bell	Pres.
Gerald Browning	Vice Pres.
LaFaun Brown	Secretary
Carrie Farris	Treasurer



MATHEMATICS CLUB



The Mathematics Club is a comparatively new organization at Paris High, having been formed a year ago. Its purpose is to extend the individual's interest in mathematics beyond the classroom.

Its membership is based on a certain amount of scholastic achievement.

OFFICERS: President, Wayne Dearing, Vice-President, Bobby Wills; Secretary, Deirdre Nolan.

MEMBERS: Blanche Dockenbrode, Wayne Dearing, Tommy Bowling, La Faun Brown, Fred Laycock, Joan Ingles, Catherine Nagle, Bill Stamler, Bobby Wills, Billy Hall, Jimmy Myers, Chester Wigglesworth, Nancy Bishop, Edwin Kirkpatrick Deirdre Nolan, Jennie Jo Florence, Mr. John Mason, Faculty Sponsor.

THE SPEECH CLUB

The Speech Club is composed of students who desire to become better acquainted with the arts of speech. Its purpose is to motivate the study and practice of good speech. Those members who earn twenty forensic points are eligible for membership in the National Forensic League, a nationwide honor society, whose purpose is to promote the interests of interscholastic speech events by conferring upon deserving candidates a suitable reward.

Among the activities in which Paris High students participate are the Regional Speech Festival, State Speech Festival, interscholastic debates, and practice tournaments. Participation in these events is made possible by the able guidance of Miss Zerelda Noland and Miss Susan Hinkle.



TRI-HI-Y



The Tri-Hi-Y Club is under the sponsorship of Miss Isgrig. Its membership is made up of girls from the Sophomore, Junior, and Senior classes.

The purpose of this club is to promote good fellowship and Christian principles in the school, home and community.

In November the club held a joint induction ceremony of officers and members with the Hi-Y.

In November a rummage sale was held to raise money for our project. Also, the members sold favors at the basketball games.

OFFICERS: President, Carolyn Collier; Vice President, Elise Hill; Secretary, Nancy Harney; Treasurer, Nancy Clayton; Chaplain, Marilyn Jones.

HI-Y CLUB

The Paris Hi-Y Club, with Mr. Stofer as advisor, has advanced considerably this year toward its goal of promoting clean living, able leadership, and civic mindedness among its members. It has, in addition to participating in school and charitable projects, sponsored a basketball team, the Rebels, and several social events.

OFFICERS: President, Bill Hall; Vice President Bill Stamler; Secretary, Jimmy Dundon; Treasurer, Henry Owen; Chaplain, Tommy Bowling; Sergeant-at-Arms, Sam Reynolds.



GIRLS GLEE CLUB



The Girls Glee Club is composed of forty-one girls in Senior High School. They perform at various programs throughout the year. They take part in the Christmas program and the spring musical program. They are usually entered at the musical contest held on the University of Kentucky campus every spring.

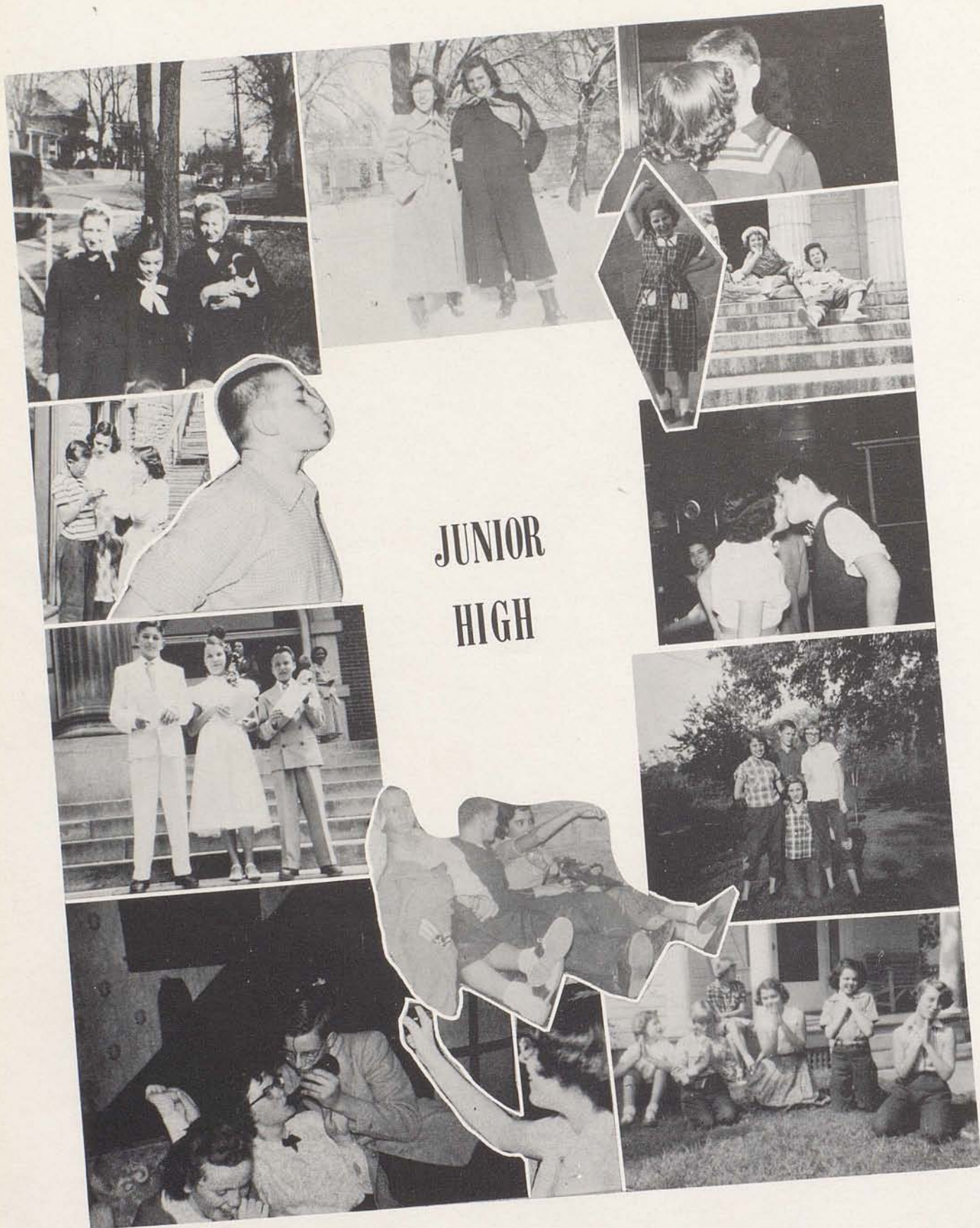
OFFICERS

Student Conductor. . Helen Shelburne
 Librarians. Susan Allen
 and Juanita Withers
 Accompanist Audrey Santen

THE CHAPEL CHOIR

The Chapel Choir is composed of thirty-six members and is under the capable direction of Miss Barbara Shafer. The Choir has given many outstanding programs through out the year.





ORANGE AND BLACK SERVICE



9TH GRADE: Elise Hill, Jo Ann Fugate, Margaret Hyden, Sylvia Strickler, Mary Booth, Nancy Harney, Sue Del Campbell, Nellie Whalen, Danny Clark, Gayle Rees, Joyce Lowry. 8TH GRADE: Nancy Ballard, Jean Harney, Patricia Dotson, Marilyn Elvove, Bonnie Hause, Alice Wigglesworth, Shirley Stanforth. 7TH GRADE: Jane Florence, Anne Thompson, Jane Toohey, Marium Thomas, Betsy Doyle, Ann Barnett, Frances Richardson, Sara Hyden, Sue Ewalt, Emma Jean Shelburne, June Taylor, Jacqueline Riggert.

Orange and Black is the scholastic honor society of Paris Junior High School. The ceremony, during which the students selected write their names in the book, had its origin in 1928.

The students are selected from each of the three Junior High classes by the faculty. Selections are based upon scholarship, attitude, activities, loyalty, leadership, cooperation, courage and character. The emblem, a four leaf clover with the letters S, A, L, and C, symbolizes these characteristics. The ceremony is to emphasize and reward those whose efforts have brought them the highest, all-around results in school work and activities during their Junior High years.

Compliments of
GRIFFIN MANUFACTURING CO.
Carlisle, Ky.

Junior High School Class Officers

Alice Wigglesworth, Larry Jordan, Tommy McMahan, Alice Langfels, Rosemary Butler, Bonnie Hause, Helen Jefferson, Patty Dotson, Tommy Belt, Jean Harney, Berle Clay, Harry Archbold, Sara Hyden, Marium Thomas, Ann Barnett, Jim Van Meter, Frances Richardson, Bobby Slack, John Tucker, Jane Florence, Bill Ragland, Betsy Doyle, Sue Ewalt, Judith Allen, Russell Brunner, Kay Collier, Rebecca Burnett, David Crump, Joella Logan, Erva Jean King, Rebecca Gaitskill, George Wigglesworth, Hazel Berry.



Freshman Class History

At present there are sixty eight members of the Freshman class. They are divided into two homerooms taught by Miss Hunter and Mr. Reynolds.

We have tried to meet our quota in the Red Cross and other drives.

There are three Freshman cheerleaders for Junior High School; Helen Jefferson and Shirley Stanforth are regulars and Rosemary Butler is substitute. We are proud to have Billye Jo Harney as a majorette. Many boys participated in basketball and football.

A few students took part in speech work both poetry and prose.

Some students of our group have written in "Orange and Black" in the past two years. They are Bonnie Hause, Patty Dotson, Shirley Stanforth, Nancy Ballard, Marilyn Elvove, Jean Harney and Alice Wigglesworth. We hope to add more to our list this year.

All together this year will conclude three very pleasant years of High School life.

Jean Harney

Geneva Adams, Margaret Anderson, Charles Atkinson, Nancy Ballard, Donald Beheler, Tommy Duke Belt, Freddie Bratton, Elizabeth Brophy, Sharon Brown, Virginia Burden, Rosemary Butler, Jerry Carr, Billy Collier, Sandra Connell, Patricia Dotson, Bobby Dotson, Betty Jean Edwards, Glen Elam, Marilyn Elvove, Joyce Erwin, Donald Farris, Vol Ferguson, Helen Frakes, Tommy Fullington, Phyllis Gilvin, Jimmy Greer, Betty Hall, Billy Jo Harney, Jean Harney, Bonnie Hause, Marilyn Hurst, Helen Jefferson, Dabney Johnson, Barbara Jones, Shirley Jones, Larry Jordan, Mary Frances Justice, Alice Langfels, Edward Lykins, Ava McCann, Nancy McConnell, Esther McDaniel, Marynell McDermott, Tommy McMahan, Betty Maxwell, Alvin Maye, Carol Ann Merringer, Utivia Minyard, Bertha Myers, Linda Nolan, Billy Purcell, Jewel Reed, Billy Rinesmith, Jerry Robin, Janet Shout, Rose Carol Shumate, Patty Smith, Dennis Spivey, Shirley Stanforth, Bobby Taylor, Jane Turpin.





Donnie Adams, Harry Archbold, Anne Barnett, Dale Clark, Berle Clay, Betty Davis, Susan Day, Betsy Doyle, Sue Ewalt, Norman Filer, Jane Florence, Patsy Flynn, Mary Jo Fuller, Kay George, Bobby Hudnall, Paul Humphrey, Sara Hyden, Doris Janes, Garlan Jordan, Laura Judy, Russell Kenney, Patty Leeds, Lon McCord, George Mann, Janet Maye, Betty Million, Carolyn Moore, Ann Morris, Larry Myers, Ralph Parsons, Henry Peters, Billy Pitts, Billy Ragland, Bobby Ricci, Jacqueline Riggert, Carl Ryan, Emma Jean Shelburne, Lillard Shelley, Juanita Sibert, Bobby Slack, Jan Smits, John Stuart, June Taylor, Marium Thomas, Anne Thompson, Jane Toohey, Floyd Townsend, John Tucker, Tommy Turpin, Jim Van Meter, John Whitaker, Norman Whitrow.

Eighth Grade Class History

Dear Friends,

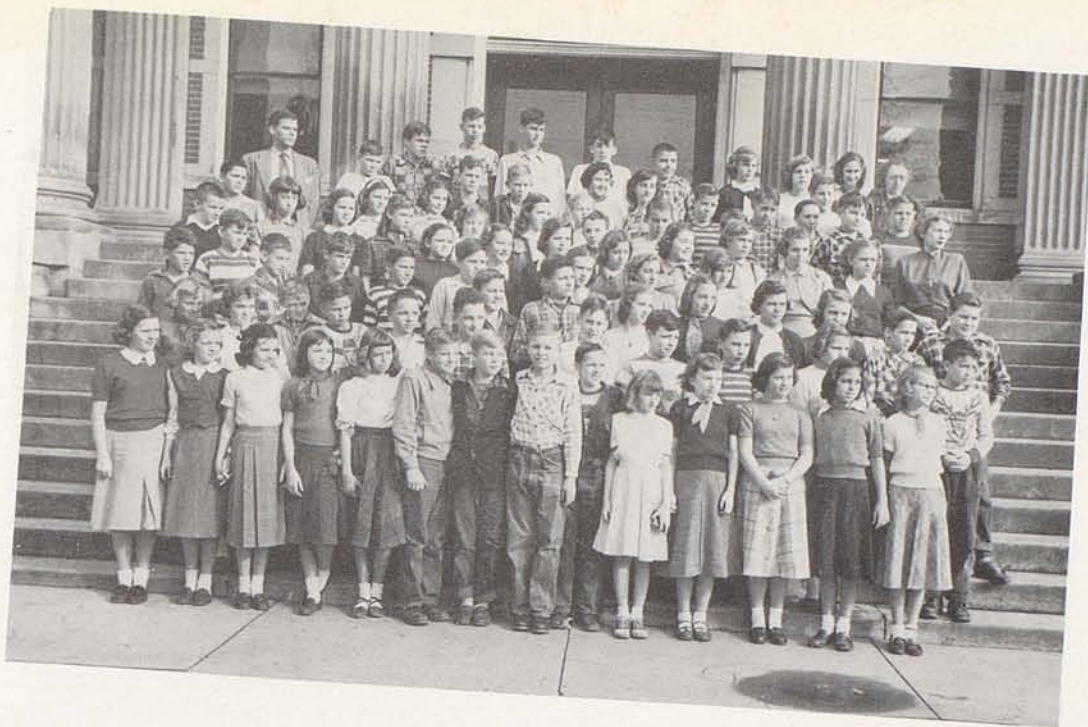
In this letter we wish to express our appreciation to the teachers who have so whole-heartedly helped us during our second year of junior high. Our homeroom teachers are Miss Marian Mitchell, Miss Kathleen Lovell and Miss Alice McClintock.

During the year we have had many activities such as; Junior Red Cross, Community Chest, and March of Dimes drives. Many students entered the junior high speech contest.

We have two junior high cheerleaders from the eighth, Jane Toohey and Jane Florence. Tommy Turpin, John Stuart, Russell Kenney, John Tucker, Bobby Ricci, Larry Myers, and Garlon Jordan are on the junior high basketball squad.

We have enjoyed two years of junior high and are looking forward to the third.

Jane Florence
Sue Ewalt



Tommy Aldridge, Judith Allen, John Bell, Hazel Berry, Patsy Bowman, Donald Brown, Harold Browning, Dickie Brunner, Evelyn Buchanan, Rebecca Burnett, Margaret Calvin, Janice Carr, James Cartmill, Betty Christopher, Leroy Clark, Barbara Clough, Kay Collier, Mary Helen Collins, Sally Jo Collins, David Crump, Beth Davis, Bonnie Dixon, Wilbert Dotson, Nellie Downing, Shirley Doyle, Carolyn Duncan, Barbara Eads, Mary Ann Elkins, Nancy Elvove, Larry Feld, Billy Ferguson, Charlene Florence, Woodrow Florence, Jo Anne Flynn, Kent Gaitskill, Rebecca Gaitskill, Ray Gant, Juanita Garrison, Stanley Garrison, Alice Gaunce, Charlene Gaunce, Charles Gray, Joe Hamrick, Virginia Hatton, Robert Hopkins, Sarah Humphrey, Sharon Jackson, Elinor James, Billy Jefferson, Ray Johnson, Billy Jones, Janice Jones, Martha Keal, Earleen Kenton, Erva King, Betty Lair, Gayle Lawrence, Bobby Linville, Joella Logan, Joe Lyons, Larry McCord, James McKinney, Jacqueline Mattingly, Allen Miller, Jeri Neale, Donald Nichols, David O'Neill, Clyde Parsons, George Pennington, Phyllis Peters, Doris Ramey, Larry Ransdell, Bobby Rankin, Gobel Reed, Jean Richardson, Larry Rife, Marilyn Sadler, John Smits, Betsy Talbot, Peggy Thompson, Michael Thornton, Ralph Turner, Winn Turney, Betty Vandy, Frank Whalen, Billy White, George Wigglesworth, Dorothy Withrow.

Seventh Grade

This last September, we entered our first year of Junior High School. We began an entirely different schedule, took more part in school activities, and met many new and exciting friends.

Judith Allen and Rebecca Gaitskill were chosen as seventh grade cheerleaders. We are proud of our seventh grade boys who are playing Junior High basketball. They have helped pull the Thorobreds through many a tough basketball game.

Our home room teachers are Miss Purnell, Miss Purcell, and Mr. Hayes.

All and all we want to say it is a great pleasure and privilege to be in Junior High School.

Kay Collier

"THE GREYH

President of the United States, Brooks Talley, has just returned to Washington from a cruise on Stoner Creek to receive our foreign ambassador to France, Mr. Freddie Nichols.

George Lucky has won the Indianapolis Speedway, covering 500 miles in two hours.

Miss Deirdre Nolan and Miss Martha Hukill, residents of Paris, Kentucky, wish to invite you to their modern art exhibition in the Louvre Museum in Paris, France. They are expected to return to the U. S. where Miss Nolan will teach in the public schools and Miss Hukill will resume her job as the assistant editor of the New York Times.

Helen Shelburne received an award for her performance in "Carmen." She has been proclaimed by the New York critics as one of the most talented young stars in the operatic field.

Bill Stamler has just received this years Ein-

stein award for proving without a doubt that $1/4 + 1/3 = 2/7$.

Wayne Dearing, space cadet, has completed a month's vacation on the moon. Harold Clinkensbeard has employed Wayne to fly him down to Florida to his sugar plantation.

Jackie Hogan has just had her famous book "How to Torture Typing Teachers" published. This book was inspired by her former teacher and is dedicated to Mr. Ray Kring.

Donald Honican has recently accepted a contract with the Trampoline stars because of his outstanding part in their show which played in Paris.

Walter Herndon, who has just recently opened a new florist show, is busy with flower arrangements for the wedding of Miss Susan Allen and Bruce Forsythe, both of Paris.

Miss Clara Rhine-smith, M.D., has opened her office on Main Street. Miss Faye Moreland will serve as Miss Rhine-smith's nurse.

Miss Mabel Robb has just recently opened her second beauty shop in Paris. Her first customer was Miss Charlotte Lemons.

Among the outstanding people in the news of today you will find Miss Dolores Williams who has just accompanied her pilot on a non-stop flight around the world. She also brought back the Latin language because as she flew over Paris, Kentucky she yelled out "Tempus Fugit."

Mayor Billy Talbott and his Commissioners, Louis Emmons and Donald McCord are attending the football game at the Cotton Bowl in Texas.

Announcing

Eddie Lyons has just accepted an offer to play a return engagement at "The Campbell House." His featured vocalist, Charlotte Curtis, has recently recorded the top hit of the year "I'll See You in the Spring -- If I Can Get Through the Mattress."

UND GAZETTE''

Eugene Maxwell and Chester Wigglesworth announce the coming of Carrie Farris's newest picture "A Rocket Named Desire" to their theater. Wayne Shumate is her leading man.

Miss Phyllis Butler has just taken over the job of teaching history in the Paris High School. This position was formerly held by Mr. Richard Stofer.

George Leer has just accepted the position of horse doctor on the estate of Miss Lucy Blanton. Miss Blanton is the owner of the horse "Billy Paul" which won the Kentucky Derby last year.

John William Frederick Laycock, the "arguing lawyer" has just returned from New York where he was successful in his case involving the Federal Government. He won this case by getting in the last words.

Weather

Bobby Wills has just been forced to resign his position as weather fore-

caster because the weather failed to agree with him. One of his favorite reports was: "Thursday changing to Friday sometime tonight and Saturday and Sunday predicted for the weekend."

Society

Mrs. James Myers, former Juanita Withers, is giving a shower this weekend for Mrs. Robt. Caywood, the former Mary Jo Sheller. Mrs. Ray Thompson, the former Caroline P. Wood is assisting with the decorations.

June Lawrence has settled down to a quiet life as a farmer's wife. She and her husband reside in the up-coming town of Carlisle, Ky.

Mrs. Gerald Browning the former Mary Sue Bell is spending her vacation in Carlisle visiting Mrs. Doot Hardin, the former Miss La Faun Brown.

Mrs. Arthur Bohannon, the former Miss Blanche Dockenbrode, a typical housewife, divided her time between keeping house

and teaching commercial subjects.

Mildred Moore and Jean Pitts are visiting Paris for a week on their furlough from Lackland Air Base in Texas.

Henry Owens, Julian McCord, Billy Hall, and Tommy Bowling have just returned from a business trip to Chicago. They attended the annual convention of the Buyers of America.

Miss Martha Wagoner has attended every big league ball game this past summer. Her favorite player is Doug Lawhorn who is expected to coach the "North American" ball team.

Introducing

Introducing a boy born to Mr. and Mrs. Johnny Denniston. Mrs. Denniston is the former Patsy Hill. It is their twelfth child and they have chosen the name Duo Decem.

EDITORS

Derdre Nolan
Martha Hukill
Carrie Farris
Martha Wagoner



WHO IS WILLIE?

Willie poisoned father's tea.
Father died in agony.
Mother looked extremely vexed.
"Really Will," she said, "what next?"

Little Willie on the track
Hear the engine squeal.
Now the engine's coming back
Scraping Willie off the wheel.

Willie poured some scalding water
Down the neck of a neighbor's daughter.
His mother thought this rather crude,
And said, "Willie, don't be rude."

Willie saw a buzz-saw buzz
Like a bike and thought it was.
Now his corpse is full of nicks -
Ain't he cute? He's only six.

Little Willie
Pair of skates
Hole in ice
Golden gates.

Little Willie, mad as -- ll,
Threw his sister down the well.
Mother said, when drawing water,
"It's so hard to raise a daughter."

Little Willie, in a fit insane,
Thrust his head beneath a train.
We were all surprised to find
How it broadened Willie's mind.

Little Willie's neighbors said
They would rather he were dead.
So, with candy as a lure,
They caught and drown him in the sewer.
(Though this rhyme seems worse than silly,
It's a fitting end to little Willie.)





SNAP

SHOTS





SNAPSHOTS



Sell Your

TOBACCO

at

Paris, Ky.

The only market in the State to lead
the entire Burley Belt seven out of ten.

There Is A Reason Why

This market has nine (9) modern, well-lighted
warehouses, with floor space for ten thousand
baskets, and all sold every five days.

Take Your Choice And Try To Get In

The Farmers Tobacco Warehouses
Phone 422

The Paris Tobacco Warehouses
Phone 1275

The Independent Tobacco Warehouses
Phone 1198

"Let's Build Together"

Sheeler Lumber Co.

500 Phones 300

The Buildings We Build - Build Our Business

Compliments of

The National Bank

And

Trust Co. Of Paris

Member of the Federal Insurance Corporation

Compliments of

Paris Stockyards

"Sales Every Friday"

WILSON
BROS.

Appliances - Hardware - Implements
Phone 164
Paris, Kentucky

Compliments of

BOURBON LUMBER CO.

Incorporated
A. B. Hancock, President

Best Wishes
from

HANSLEY MILLS

A Good Place To Work

Compliments of

ARDERY'S DRUGS

Phone 50

Cor. 7th & Main

Compliments of
BOURBON HATCHERY

and
"Pillsbury Ballard"

PEOPLES DEPOSIT BANK
AND TRUST COMPANY

"This bank appreciates your patronage"

FOOKES' GROCERY

Groceries - Select Meats
Fresh Fruits & Vegetables
Phone 1372
400 W. 2nd Street Paris, Ky.

Compliments of

RAYMOND CONNELL

Compliments of
THE KENTUCKIAN - CITIZEN
"Since 1807 a voice of the Bluegrass"

F. C. JOHNSTON
WELDING AND MACHINE SHOP


C & D PAINTERS
Exterior & Interior Decorating
W. R. Clough -- W. M. Dray
1365 Phones 1196R

WAGONER'S MARKET
Phone 238
Fresh Meats & Fancy Groceries
Winchester Street Paris, Ky.

Congratulations Seniors
PARIS ROTARY CLUB

WOODFORD SPEARS & SONS
Kentucky Bluegrass Seed

<p>OWENS & TAYLOR MARKET</p> <p>Groceries - Fresh Meats We Deliver</p> <p>Phones 93 & 1850 Paris, Ky.</p>	<p>R. L. FILER AUTO BODY SHOP</p> <p>Dependable Auto Painting Upholstering and Body Service</p> <p>"We take the dents out of accidents"</p> <p>130 W. Eighth Street</p>
<p>Compliments of</p> <p>PARIS MONUMENT WORKS</p> <p>Paris, Kentucky</p>	<p>Compliments of</p> <p>COLONIAL MOTEL</p>
<p>FARRIS PHOTO STUDIO</p> <p>Portraits - Kodak Finishing</p> <p>512 Main St. Paris, Ky.</p>	<p>Compliments of</p> <p>LIMESTONE GAS COMPANY</p> <p>"Heat with Gas"</p>
<p>Studebaker Cars & Trucks Sales - Parts Factory Trained Mechanics</p> <p>BALDWIN MOTOR CO.</p> <p>813 Main St. Phone 510 Paris, Ky.</p>	<p>Compliments of</p> <p>GRINNELL DRY CLEANING</p> <p>622 Main St. Phone 793 Paris, Ky.</p>
<p>Compliments of</p> <p>DR. & MRS. S. M. RICKMAN</p>	<p>Compliments of</p> <p>THE W. R. STAMLER CO.</p>
<p>Compliments of</p> <p>PARIS LAUNDRY & DRY CLEANING</p> <p>Phone 76</p>	<p>Compliments of</p> <p>NICK'S RESTAURANT</p>

<p>SPIKES CONFECTIONERY</p> <p>Tasty Sandwiches Soft Drinks Reuben Arnsparger, Propr.</p>	<p>Compliments of</p> <p>DR. WILLIAM S. MORGAN</p>
<p>Compliments of</p> <p>GOREY INSURANCE AGENCY</p> <p>"It Pays To Be Insured"</p>	<p>Compliments of</p> <p>ELLIS JEWELERS</p>
<p>MAIN STREET MARKET</p> <p>J. T. Tate & Sons Groceries & Fresh Meats Phone 16 & 1523 Main St. Paris, Ky. We Deliver</p>	<p>Congratulations Seniors</p> <p>GOODMAN CONTRACTING CO.</p> <p>Paint, Roofing Supplies 12 W. 6th St. Paris, Ky. Phone 318</p>
<p>Compliments Of</p> <p>SMOKE HOUSE</p>	<p>G. S. VARDEN & SON</p> <p>Prescription Druggists Paris, Kentucky</p>
<p>RYE'S</p> <p>Misses' and Children's Apparel 405 Main St. Paris, Ky.</p>	<p>Compliments of</p> <p>HAMILTON'S</p> <p>Shoe Store Paris, Kentucky</p>
<p>FORD & COMPANY</p> <p>Lowe Bros. Paints - China and Glassware - Pioneer Farm Fence Sewer Pipe - Iron - Paper Goods Phone 86 Paris, Ky.</p>	 <p>1318 S. MAIN ST. PARIS, KENTUCKY</p>

Compliments of
SCHINE THEATRES

Compliments of
•SHAMROCK
Fred Poplin



Authorized
Frigidaire Dealer

GUDGELL APPLIANCE COMPANY

Noel E. Gudgell
Day Tel. 187 800 Main St.
Night Tel. 971 Paris, Ky.



WESTERN AUTO
ASSOCIATE STORE
Edwin "Kirk" Kirkpatrick,
Owner
Paris, Ky.

JACK COHAN & SONS
Bostonian Shoes Disney Hats
Phone 535 Paris, Ky.

The City of Paris is
always willing to co-
operate with our schools
in their undertakings.

CITY OF PARIS, KENTUCKY
Geo. L. Doyle W. S. Chisholm
Harold E. Bell Wm. Brophy

J. K. GREER
Jeweler - Optometrist
Gifts
604 Main Street

Compliments of
J. C. PENNEY CO.
"Where a nation shops and saves"

CHAS. P. COOK CO.
Frosted, and S & W. Foods
Phones 206-207

If It Comes From Davis-It Is Right
J. W. DAVIS & CO.
Good Clothing Always

Compliments of
DR. & MRS. B. N. PITTENGER

HOTEL BALDWIN
Paris Civic, Business
& Social Center

<p>Compliments of SAMUEL MILNER</p>	<p>GRAY'S BARBER SHOP 338 Main Street</p>
<p>Compliments of BOURBON LOCKER PLANT</p>	<p>Compliments of PARIS GARAGE Buick-International Trucks 4th & Pleasant St. Phone 566</p>
<p>Compliments of LARKIN'S INSURANCE AGENCY 508 Main St. Phone 88 Automobile - Fire Insurance</p>	<p>Compliments of TOWN AND COUNTRY Mrs. Tillie F. Judy, Mgr.</p>
<p>Compliments of BROPHY'S ELECTRIC SHOP Crosley Refrigerators</p>	<p>Compliments of JACK COHAN Crown Jewelers 615 Main St. Paris, Ky.</p>
<p>DAVIS FUNERAL HOME "Now in our 104th year of service" Phone 137 Paris, Ky.</p>	<p>Est. 1866 Phone 288 SHIRE & FITHIAN "The House of Quality" Jewelry and Gifts</p>
<p>SMITS GREENHOUSE Fine Flowers Expertly Arranged Phone 915 West Second St.</p>	<p>A Good School- A Good Student Body- A Good Faculty- THE A. J. WINTERS CO. Jewelers</p>

<p>Raymond E. Turner</p> <p>HINTON-TURNER FUNERAL HOME</p> <p>Since 1860</p> <p>Phone 55 Paris, Ky.</p>	<p>Compliments of</p> <p>KENTUCKY UTILITIES CO.</p> <p>Incorporated</p>
<p>Compliments of</p> <p>VOGLER DRUG CO</p> <p>"The Rexall Store"</p> <p>Paris, Kentucky</p>	<p>Compliments of</p> <p>WHEELER FURNITURE CO.</p> <p>Incorporated</p> <p>"The store where homes begin"</p> <p>530 Main St. Paris, Ky.</p>
<p>C. ERNEST MARTIN</p> <p>for</p> <p>Your Real Estate and Insurance Needs</p> <p>Phones: Office 663 - Residence 888-J</p> <p>Paris, Ky.</p> <p>"The Best Town In America"</p>	<p>GILBERT LYTLE</p> <p>Meats - Groceries</p> <p>Corner 10th & Main Phone 20</p>
<p>WOLLSTEIN'S</p> <p>"Everything Men and Boy's Wear"</p> <p>Phone 40 Paris, Ky.</p>	<p>Compliments of</p> <p>BEN COHEN SHOE STORE</p> <p>609 Main Street</p>
<p>HALL'S MARKET</p> <p>Collins Hall, Propr.</p> <p>We Deliver</p> <p>Groceries - Meats - Fruits</p> <p>Vegetables</p> <p>Phone 442 14th & Main</p>	<p>DAUGHERTY PAINT & SUPPLY</p> <p>D. T. McCracken</p> <p>Paint and Wallpaper</p> <p>Glass - Alsco Storm Sash - Doors</p> <p>434 Main Phone 231 Paris, Ky.</p>
<p>Furniture - Stoves - Rugs</p> <p>DORSEY FURNITURE CO.</p> <p>We deliver</p> <p>302 Main Paris, Ky.</p>	<p>FRED ATKINSON AND SONS</p> <p>Florists</p> <p>Successors to John Christman Co.</p> <p>26 Nineteenth St. Paris, Ky.</p>


Compliments of
TOMMY'S ICE CREAM BAR

HUSTON AND DOYLE
Plumbing and Heating
So. Main St. Paris, Ky.

Compliments of
THE CITY CLUB

Compliments of
NATHAN LINVILLE

Compliments of
JAMES EVERMAN

PIPES CHEVROLET COMPANY
Sales  Service
Phone 532

Known For Better Values
LERMAN BROS.
Cash Department Store
Paris --- Kentucky

OTHER FRIENDS AND PATRONS
MI-LADY'S BEAUTY SALON
TILFORD F. BURNETT
NANCY LEE BEAUTY SHOP
WOMAN'S EXCHANGE & GIFT SHOP
MARY MARSH PRATHER

Cars
Implements

Trucks
Tractors

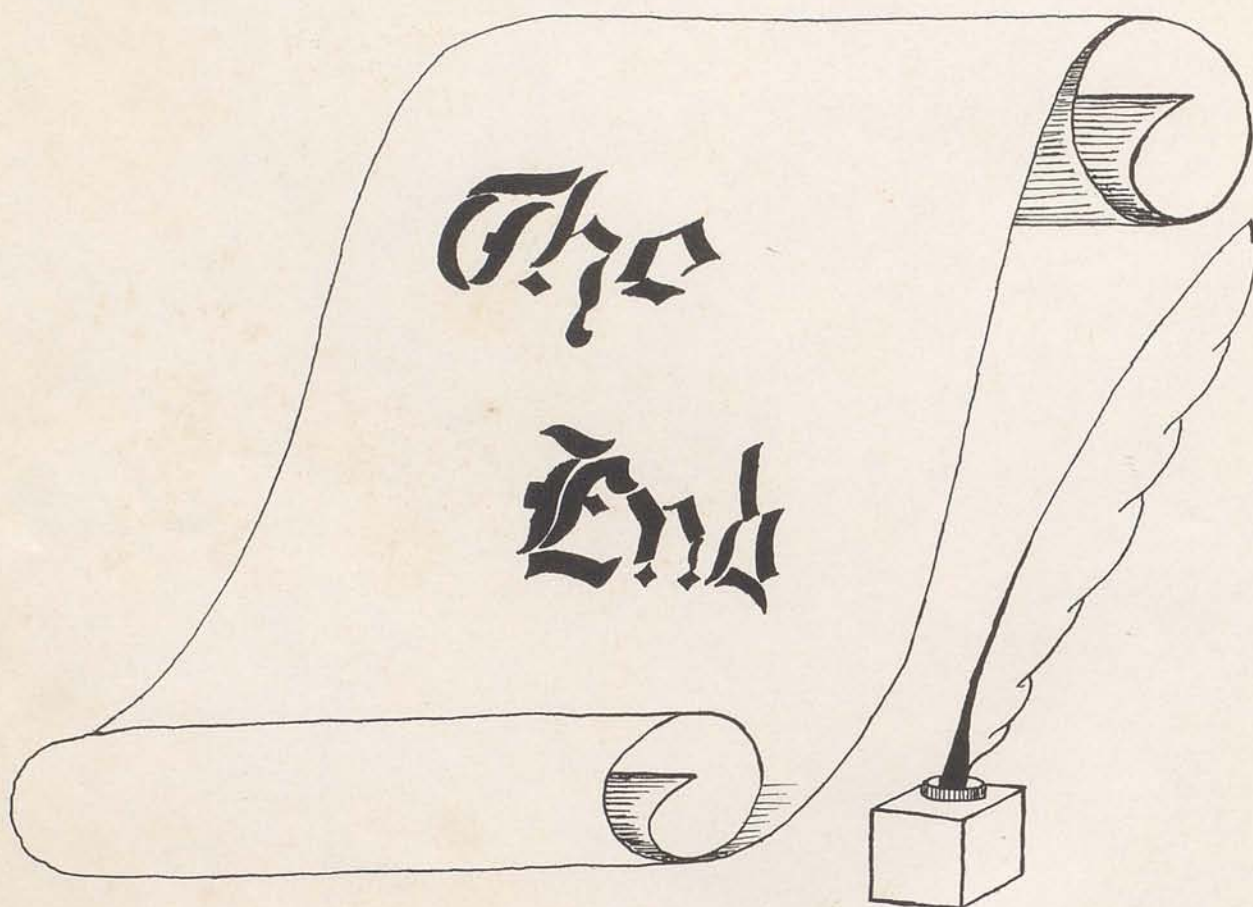
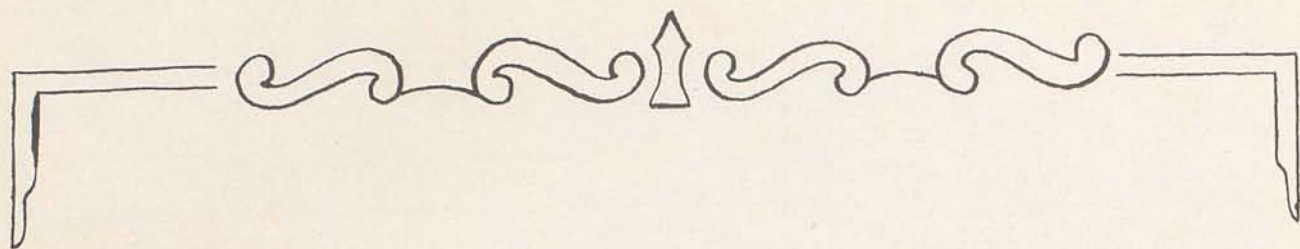


SOUSLEY MOTORS
8th & High St. Phone 1550

AUTOGRAPHS



Charlotte Lemons
 Lucy Blanton
 Marlene Bell
 Tommy Bowling
 June Lawrence
 Gerald Browning
 Caroline Proc Wood
 Jackie Hogan
 Mary Kenney Moreland
 Chester Wigglesworth
 Helen Shelburne
 Freddie Laycock
 Edith Moore
 Bill Stander
 George Lee
 Mary Jo Shuler
 Gene Maxwell
 Ray Thompson
 Henry Clay Owen
 Douglas Lawhorn
 Martha Jean Waggoner
 Blanche Dockenbrode
 Clara Pinesmith
 George Lucky
 Gatsby Hill
 Susan Allen
 Mabel Robb
 Donald Honican
 Billy C. Hall
 Deirdre Jane Nolan
 Billy Talbot
 Louis Emma
 Walter Hammond
 Jean Pitts
 Juanita Withers
 Phyllis Butler
 Jimmy Myers
 Wayne Shamata
 Charlotte Curtis
 Martha Hickell
 A Love Dream
 Bobby Wills
 Donald McCord
 Bill Webb
 Bob Caywood
 Bruce Facy the
 A Love Dream
 Wayne Dearim





MYERS *deep-tone* YEARBOOKS

THE PACEMAKERS OF QUALITY

MYERS AND CO. INC.

TOPEKA, KANSAS

