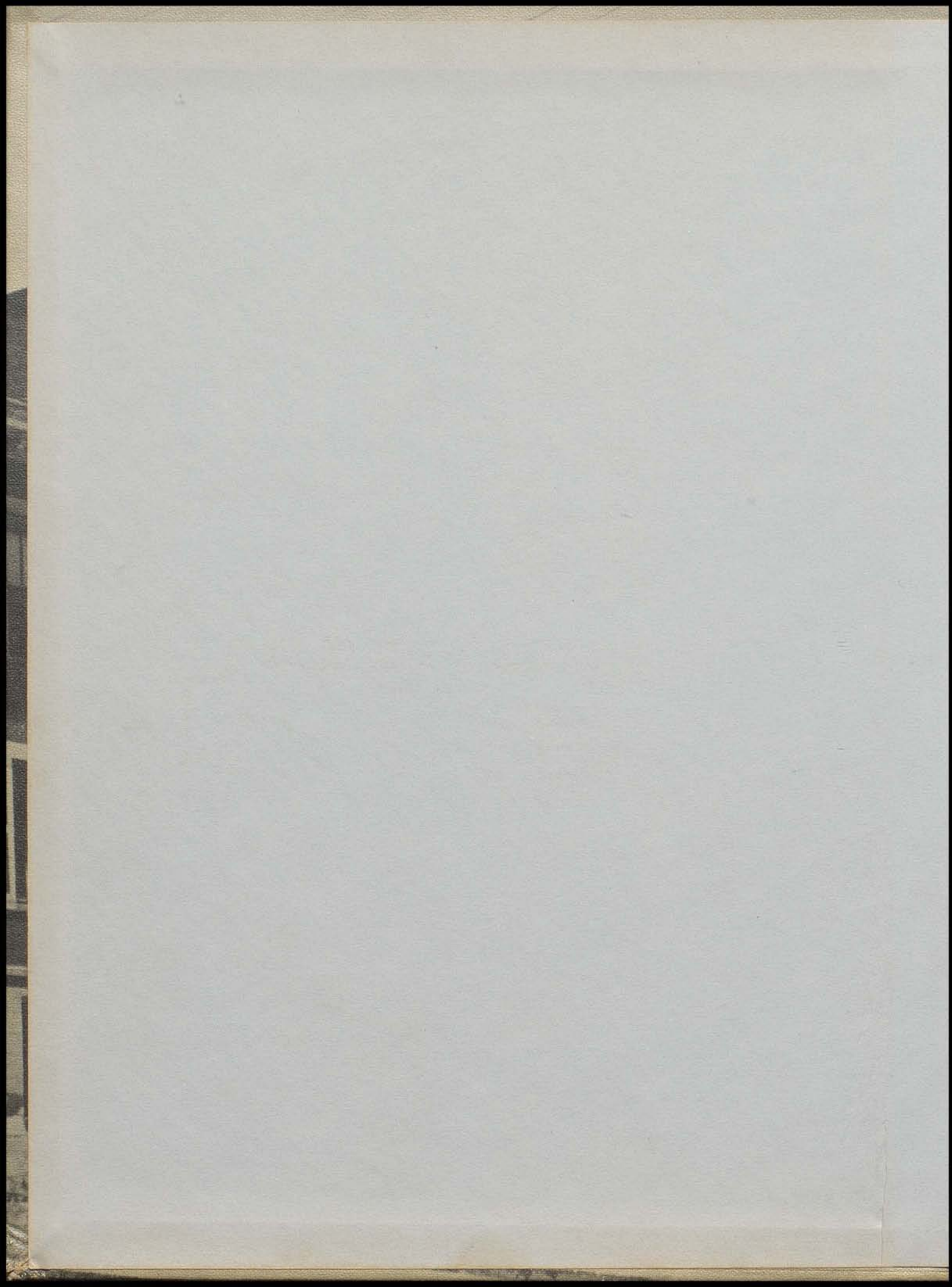
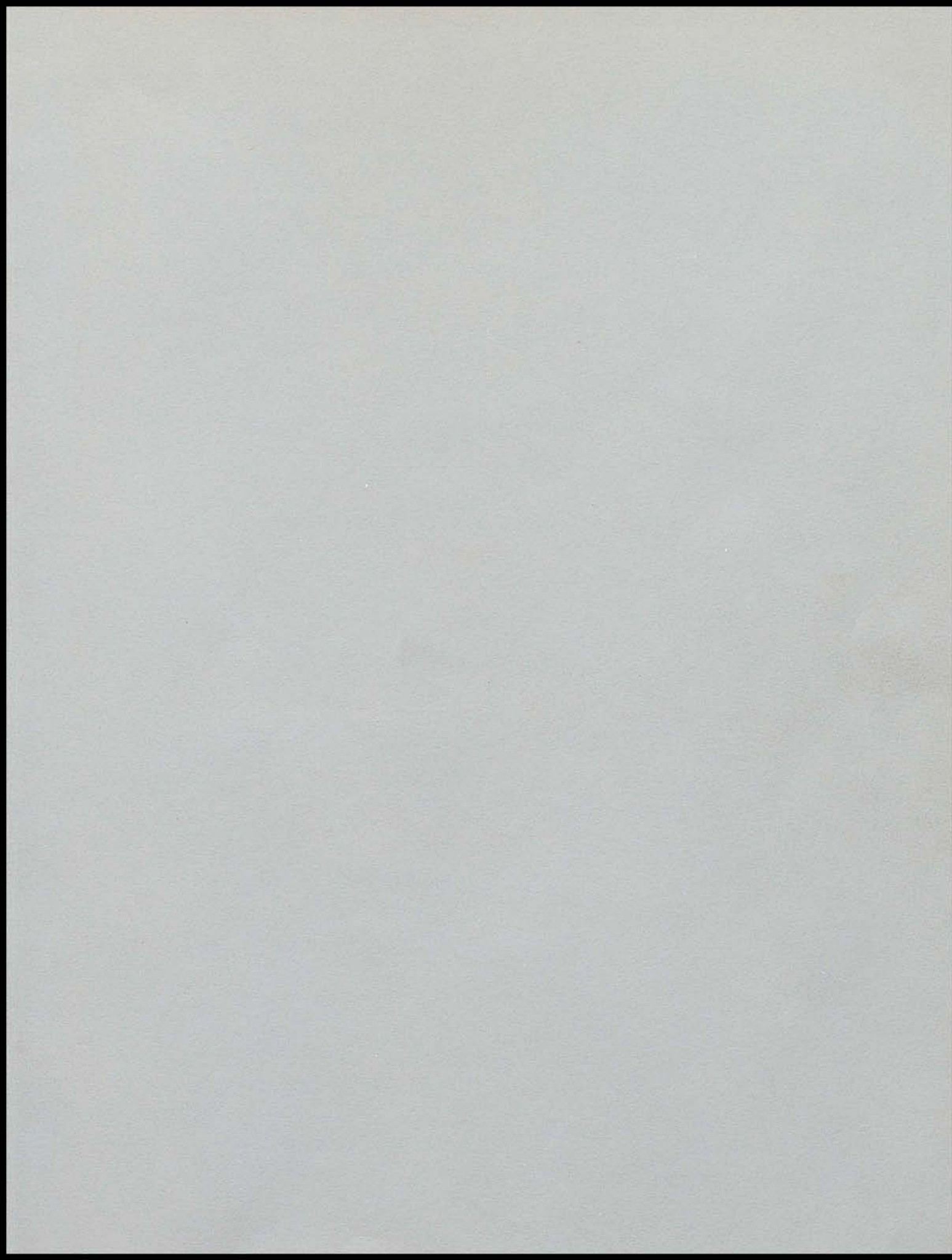
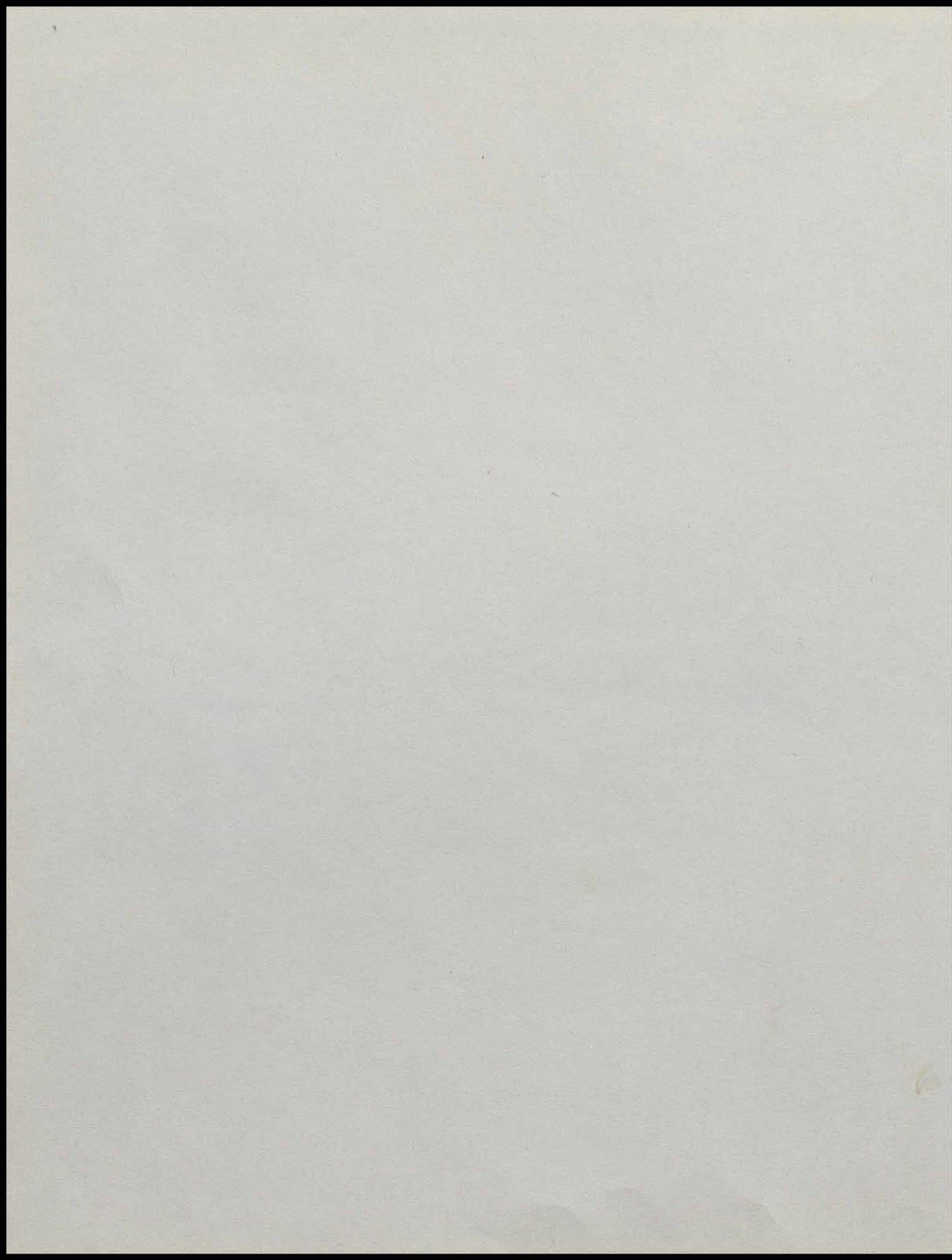


The Parisian

1953







The
Parisian
1953

Published by
THE SENIOR CLASS OF
PARIS HIGH SCHOOL
Paris, Kentucky

Dedication

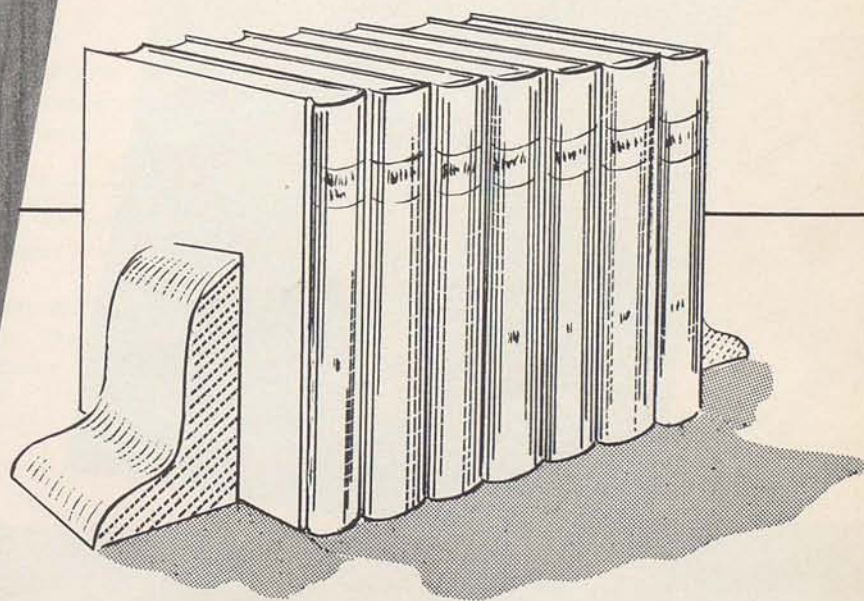


"Keep up your bright swords, for the dew will rust them."
"Othello"-Shakespeare

We, the members of the class of nineteen hundred and fifty-three, respectfully dedicate this annual to Professor Lee Kirkpatrick, who has carried the educational torch in our community for thirty-five years.

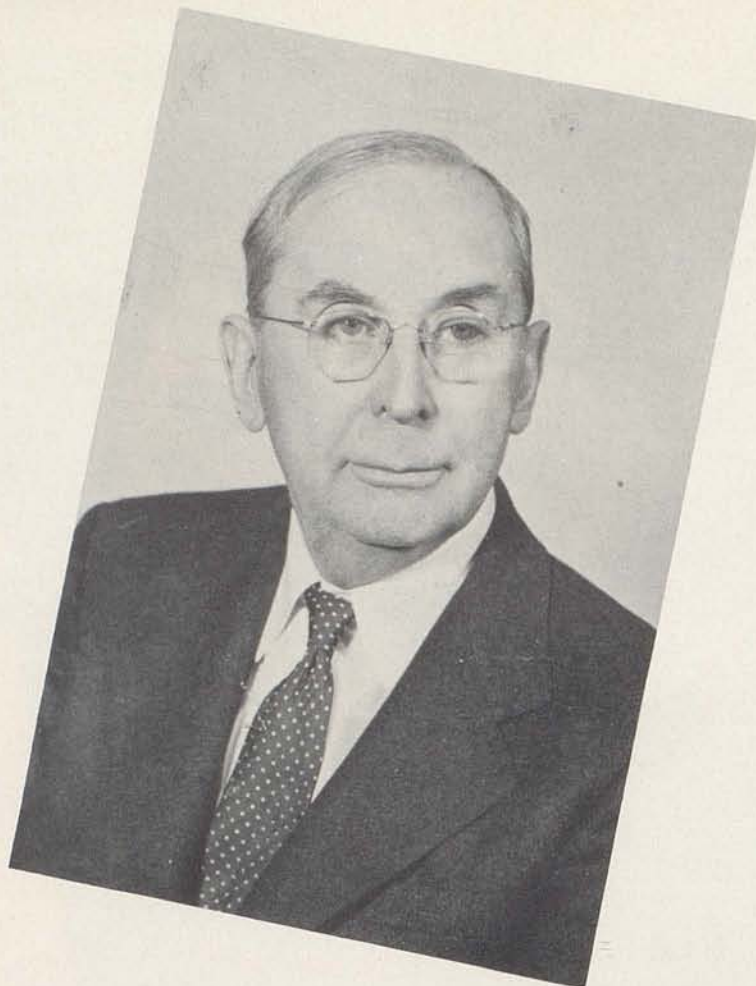
A man of vision, Mr. Kirkpatrick has exerted marked influence upon the spiritual, moral, and intellectual development of two generations of young people in this community. Believing that the best education is built upon a broad, cultural foundation, he established, early in his service as Superintendent of the city schools, a program of studies designed to train the intellectual faculties of his students. Through his unselfish devotion to them and his interest in their welfare long after their graduation he has inculcated in them high ideals of achievement. His faith in them has kept them loyal to their school and to their community. To him we pay humble tribute.

Faculty



LEE KIRKPATRICK
Superintendent

A. B. Georgetown College;
M. A. Columbia University;
Graduate Student Harvard University



WILLIAM F. RUSSELL
Principal

A. B. Centre College;
M. A. University of Kentucky





Faculty

JOHN MALONE
A. B. Morehead State College
History and Political Science

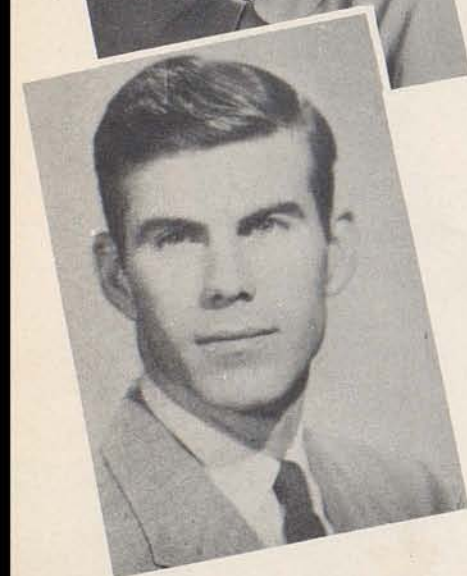
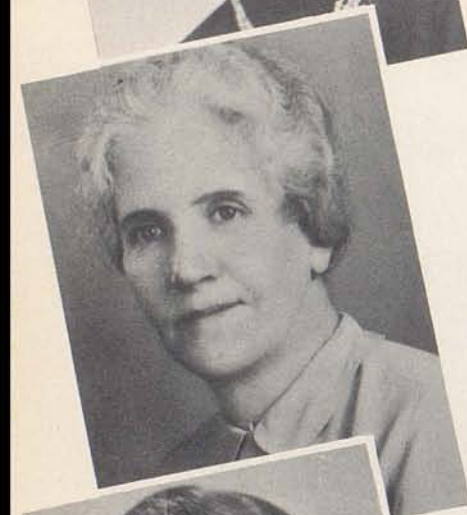
ZERELDA NOLAND
A. B. University of Kentucky; M. A. Columbia University
English

GILBERT LAVIN
A. B. University of Kentucky; M. A. University of Michigan
Latin

JOHN MASON
A. B. University of Kentucky
Mathematics

MARGARET YATES
A. B. Georgetown College
Romance Languages

MARY ELEANOR ISGRIG
A. B. University of Kentucky
Science



Faculty

LOUISE C. CLAY
A. B. University of Illinois
Librarian

MRS. DAN PEED
B. S. University of Kentucky
Home Economics

RAYMOND KRING
A. B. Morehead State College
Commercial

TERPSYTHEA CHALKAS
B. M. University of Kentucky
Music

HELEN HUNTER
A. B. University of Kentucky; M. A. Columbia University
History

RONALD ALLEN
A. B. University of Kentucky; M. A. University of Kentucky
Athletics



Faculty

KATHLEEN LOVELL
A. B. University of Kentucky
English

MARION MITCHELL
A. B. Randolph Macon Woman's College; M. A. Columbia University
Geography

ALICE McCLINTOCK
A. B. Georgetown College; M. A. University of Michigan
Latin

AGNES PURNELL
A. B. University of Kentucky
Mathematics

MARY ALMA PURCELL
A. B. Western Kentucky Teacher's College
English

JANIE REES
A. B. Georgetown College; M. A. University of Kentucky
Mathematics

No Picture
CONRAD BAKER
A. B. Georgetown College
Science



Annual Staff

Jimmy Dundon - Editor-in-chief

George Letton - Assistant Editor

STAFF MEMBERS: Nancy Bishop, Betty Doyle, Ann Richardson, Barbara James, Dorothy Fullington, Audrey Santen, Jane Smith, Jean Smith, Frances Doyle, Carolyn Bowling, Martha Hudnall, Shirley Cain, Dorothy Burris, Barbara Shelley, Joann Ingels, Lucinda Day, Carolyn Collier, George Letton, Barbara Gilvin, Marilyn Jones, Sam Reynolds, Edwin Kirkpatrick, Donald Boyle, Hart Sledd, Catherine Nagle, Bobby Crump, Jessie Marie Clark, Elizabeth Nichols, Billy Langfels, Ellen Clinkenbeard, Paul Craycraft, Barbara Rinesmith.





President . . . James Dundon
Vice President. . . George Letton
Secretary . . . Marilyn Jones
Treasurer . . . Dorothy Burris

Seniors



Senior Class

BETTY DOYLE

Although French is this gal's peeve,
She usually has a trick up her sleeve.

Jr. Chorus 1; Glee Club 2, 3, 4; Choir 2, 3, 4; Latin Club 2;
Romance Language Club 3, 4; Commercial Club 3, 4; Annual
Staff; Service Club 4; Jr. Red Cross Council 3, 4.

JIMMY KEARNS

Jimmy is a poet, we hear
He was inspired by a Junior dear.

Jr. Chorus 1; Commercial Club 4; Football 4; Hi-Y 3, 4.

BARBARA WHIRLES

Barbara Sue has had many a beau,
But to the altar with Howard she'll go.

Jr. Chorus 1; Glee Club 2, 3, 4; Choir 2, 3, 4; Trio 2, 3, 4;
Home Ec. 2, 3, 4; Commercial Club 3, 4; Sextet 4; Tri-Hi-Y
4.

ELIZABETH NICHOLS

Elizabeth with a voice so sweet,
With Bobby Brooks she can't be beat.

Annual Staff 4, Jr. Chorus 1; Commercial Club 3, 4; Choir
2, 3, 4; Glee Club 2, 3, 4; Romance Language 3, 4; Service
Club 4; Latin Club 2; Speech Club 2; Tri-Hi-Y 2; 4-H Club
1, 2.

ANN RICHARDSON

She's cute as a button, sweet as pie,
When Paul walks by she breathes a sigh.

Orange & Black 1; Parisian Circle 2, 3, 4; Latin Club 2, 3, 4;
Romance Language Club 3, 4; Speech Club 2, 3, 4; Commer-
cial Club 3, 4; Beta Club 3, 4; Annual Staff 4; Service Club
4, Tri-Hi-Y 2; Jr. Red Cross Council 3, 4.

BILLY GEORGE

Georgie Porgie puddin' an pie,
Kissed Jo Ann and made her sigh.

Commercial Club 3, 4; Football 4; Basketball 2, 3, 4; Hi-Y-
2, 4; Baseball 4; Jr. Chorus 1.

DOROTHY FULLINGTON

Dot, the president of our band,
Ever willing to lend a hand.

Latin Club 2, 3, 4; Band 1, 2, 3, 4; Choir 2, 3, 4; Commercial
Club 3, 4; Annual Staff 4; Service Club 4; Glee Club 2; Jr.
Chorus 1; Home Ec. 1.

CAROLYN BOWLING

Carolyn Ann, is a snappy majorette,
And she likes Letton, we can bet.

Glee Club 2, 3; Choir 3, 4; Tri-Hi-Y 2; Romance Language
Club 3, 4; Latin Club 2; Class Officer 3; Band (Majorette) 3,
4; Commercial Club 3, 4; Speech Club 2, 4; Annual Staff 4;
10 Home Ec. 1; Jr. Chorus 1; Orange & Black 1.





Senior Class

JESSIE MARIE CLARK

Jessie Clark the gal who roams,
Goes with a lad by the name of Combs.
Jr. Chorus 1; Annual Staff 4; Commercial Club 3, 4; Home Ec. 2, 4; Tri-Hi-Y 2, 3, 4; Romance Language Club 3, 4; 4-H Club 1.

DOROTHY BURRIS

Dorothy is always Cynthia bound,
Maybe a new love there she's found.
Romance Language Club 3, 4; Speech Club 3, 4; Class Officer 4; Annual Staff (Business Manager) 4; Glee Club 2, 3.

JAKE BOYLE

Jake may not be tops in a quiz,
But at selling hot-dogs he's a whiz.
Football 1, 3, 4; Latin Club 2.

CATHERINE NAGLE

Catherine, will be a teacher some day,
We're sure the children will like her way.
Home Ec. 1, 2; Orange & Black 1; Math Club 3; Tri-Hi-Y 2; Speech Club 3; Latin Club 2, 3, 4; Beta Club 3, 4; Service Club 4; Annual Staff; Commercial Club 3.

BARBARA GILVIN

Barbara is happy and gay,
When she's in Bobby's Chevrolet.
Latin 2; Jr. Chorus 1; Glee Club 2, 3, 4; Home Ec. 2; Commercial Club 3, 4; Romance Language 3, 4; Tri-Hi-Y 2, 3, 4.

BILLY LANGFELS

Billy is quite a lad,
Many a gal in his Chrysler he's had.
Hi-Y 4; Latin Club 2; Annual Staff.

MARILYN JONES

In fair or fowl weather,
Marilyn and Edwin will stick together.
Speech Club 2, 3, 4; N. F. L. 2, 3, 4; Debate 2, 3, 4; Tri-Hi-Y 2, 3, 4; Latin Club 2, 3, 4; Commercial Club 3, 4; Glee Club 2, 3; Romance Language Club 3, 4; Service Club 4; Class Officer 4; Annual Staff.

BARBARA SHELLEY

Barbara is happy as a lark,
Has her hooks set for a guy named Sharp.
Orange & Black 1; Tri-Hi-Y 2, 3, 4; Jr. Chorus 1; Home Ec. 1, 2, 3; Commercial Club 3, 4; Latin Club 2; Beta Club 3, 4; Service Club 4; Annual Staff; Parisian Circle 4.





Senior Class

MARTHA HUDNALL

Now when it comes to a boy named Poe,

Our gal Martha is ready to go.

Service Club 4; Choir 2, 3, 4; Glee Club 2, 3, 4; Annual Staff (Typist Editor) Latin Club 2; Romance Language Club 3, 4; Junior Chorus; Commercial Club 3, 4; Tri-Hi-Y 2; 4-H 1, 2.

HART SLEDD

Poor Hart, with all his girls,

They really keep him going in whirls.

Junior Chorus 1; Basketball 1, 2, 3, 4; Football 3, 4; Choir 3, 4; Hi-Y 3, 4; Romance Language 3, 4; Latin Club 2; Commercial Club 3, 4; Annual Staff.

BETTY MASON

Betty's voice, can never be found,

When Miss Noland is around.

Tri-Hi-Y 2, 3, 4; Home Ec. 2, 3; Junior Chorus 1.

NANCY BISHOP

Though Nancy sings a very sweet tune,

She has a soldier in Camp Lejeune.

Orange & Black 1; Tri-Hi-Y 2, 3; Commercial Club 3, 4; Service Club 4; Latin 2, 3, 4; Parisian Circle 3, 4; Beta Club 3, 4; Annual Staff; Home Ec. 2; Math Club 2, 3.

JENNIE JO FLORENCE

Jennie Joe left our school last year,

But still we feel she is very near.

Orange & Black 1; Home Ec. 1; Junior Chorus 1; Tri-Hi-Y 2; Choir 2, 3; Glee Club 2; Speech Club 2, 3; Latin 2, 3; Math Club 3; Commercial Club 3; Beta Club 3.

EDDIE NEALE

Here's our boy named Bomar,

When he's with Sue, he's up to par.

Class Officer 1, 2; Hi-Y 3, 4; Romance Language 3, 4; Basketball 1, 4; Football 1, 4; Baseball 1, 4; Junior Chorus 1.

JOANN INGELS

A U. K. co-ed she's going to be,

No one wishes her better luck than we.

Home Ec. Club 1; Junior Chorus 1; Orange & Black 1; Tri-Hi-Y 2; Speech 2, 3, 4; N.F.L. 3, 4; Girls Glee Club 2, 3, 4; Romance Language 3, 4; Latin Club 2; Commercial Club 3, 4; Beta Club 3, 4; Service Club 4; Debating 2; Annual Staff.

BARBARA MCKENZIE

Barbara, who we all call Pete,

Is a little thing, cute and sweet.

Junior Chorus 1; Home Ec. Club 1, 2, 3; Commercial Club 3, 4; Romance Language 4; Glee Club 4; Tri-Hi-Y 2, 3, 4.



Senior Class



SHIRLEY CAIN

Shirley says she's tired of books,
We wonder if it's Fryman's looks.

Junior Chorus 1; Home Ec. 1; Commercial Club 3, 4; Choir 2, 3, 4; Beta Club 3, 4; Speech Club 3, 4; Romance Language Club 2, 3, 4; Service Club 4; Glee Club 2, 3; Tri-Hi-Y 2, 3; Annual Staff 4; Girls State Representative 3.

GEORGE LETTON

About Vocational he has a craze,
So this is what keeps Georgie in a daze.

Beta Club 3, 4; Hi-Y 3, 4; Parisian Circle 3, 4; Class Officer 4; Service Club 4; Golf Team 3; Annual Staff.

JOY WEST

Joy West, we always can find
Riding in Courtney's car, any old time.

Home Ec. Club 1, 2, 3; Junior Chorus 1; Commercial Club 3, 4; Tri-Hi-Y 2.

EUNICE WARREN

Mary Eunice is really grand,
She's always willing to lend a hand.

Tri-Hi-Y 2, 3, 4; Home Ec. Club 1, 2, 3; Commercial Club 3, 4.

JOAN McCORD

Joan McCord is quite a gal,
I wonder why she wants a Cuban for a pal?

Junior Chorus 1; Cheerleader 1, 2, 3, 4; Glee Club 1, 2, 3; Romance Language Club 3, 4; Home Ec. Club 4; Tri-Hi-Y 4; Commercial Club 3.

HARRY GALBRAITH

Harry Galbraith is a real gone guy,
No more over Pat does he sigh.

Football 4; Choir 4; Junior Chorus 1; Commercial Club 3, 4.

WILMA McNEES

Wilma will never have a frown,
When she and Walter settle down.

Tri-Hi-Y 2, 3, 4; Commercial Club 3, 4; Romance Language Club 3, 4; Home Ec. Club 2.

PAUL CRAYCRAFT

Paul must have lots of charm,
He always has a girl on each arm.

Annual Staff 4; Commercial Club 3, 4; Hi-Y 3, 4; Romance Language 2; Junior Chorus 1.





Senior Class

ELLEN CLINKENBEARD

Ellen Clay goes from town to town,
From Georgetown to Carlisle she can be found.
Romance Language Club 2; Home Ec. Club 1, 2, 4; Annual Staff; Junior Chorus 1, Class Officer 3; Tri-Hi-Y 3; Commercial Club 3, 4.

DONALD BOYLE

In his ford he's really swift,
He gives the girls many a lift.
Class Officer 3; Annual Staff 4; Service Club 4; Speech Club 2; Romance Language Club 3, 4; Hi-Y 3, 4; Latin Club 2; Commercial Club 3, 4.

BARBARA JAMES

Barb is always rolling her eyes,
Wonder what certain boy she spies?
Annual Staff; Glee Club 2, 3; Band Sponsor; Commercial Club 3, 4; Romance Language Club 3, 4; Latin Club 2; Junior Chorus; Tri-Hi-Y 2, 3; Speech Club 2, 3, 4; Home Economics 1.

AUDREY SANTEN

Three cheers for Audrey Ann,
She's already found herself a man.
Glee Club 2, 3, 4; Choir 3, 4; Beta Club 3, 4; Tri-Hi-Y 2, 3; Speech Club 2, 3, 4; N.F.L. 2, 3, 4; Romance Language Club 3, 4; Math Club 2; Service Club 4; Annual Staff; National Speech Tournament 3.

BARBARA RINESMITH

Cheer up, Barbara, What do you say?
Maybe you'll be a manager someday.
Junior Chorus 1; Home Ec. Club 1; Romance Language Club 3, 4; Commercial Club 3, 4; Service Club 4; Annual Staff; Glee Club 2, 3; Tri-Hi-Y 2; Girls' State 3; Latin Club 2.

SAM REYNOLDS

Wonder what Bernie would have to say,
If that football chain ever gave way.
Beta Club 3, 4; Service Club 4; Latin Club 2; Math Club 2, 3; Commercial Club 4; Speech Club 4; Hi-Y 2, 3, 4; Choir 2, 3, 4; Junior Chorus 1; Orange & Black 1; Class Officer 1; Football 1, 2, 3, 4; Basketball (Manager) 1, 2, 3, 4; Baseball 2, 3, 4; Annual Staff.

ANN CLINKENBEARD

Ann a nice and friendly lass,
Is the only married one in our class.
Home Ec. 1, 2, 3; Romance Language 1; Class Officer 1, 2, Glee Club 1.



Senior Class



LUCINDA DAY

On a Junior she is struck,
Cindy, Cindy best of luck.
Glee Club 2, 3; Choir 2, 3, 4; Tri-Hi-Y 2; Latin Club 2;
Cheerleader 1, 2, 3, 4; Home Ec. 1, 3, 4; Commercial Club
3, 4; Junior Chorus 1; Annual Staff.

VICTOR CLARK

Victor, likes to read good books,
His specks give him a studious look.
Hi-Y 4; Commercial Club 3, 4; Romance Language Club 3,
4; Junior Chorus 1.

FRANCES DOYLE

A better friend you'll never find,
She does her work and never seems to mind.
Orange & Black 1; Junior Chorus 1; Class Officer 1, 2; Tri-Hi-
Y 2; Glee Club 2, 3, 4; Latin Club 2, 3, 4; Romance Language
Club 3, 4; Beta Club 3, 4; Commercial Club 3, 4; Speech Club 3;
Service Club 4; Home Ec. Club 1; Annual Staff; Girls' State 3.

MARY LOU SADLER

Mary Lou, a quiet gal,
To each and all she is a pal.
Home Ec. 1; Glee Club 2, 3; Tri-Hi-Y 4; Commercial Club 3,
4; Romance Language 3, 4; Latin Club 2; Junior Chorus 1.

JAMES DUNDON

Jimmy is our Senior President,
To greater things he will be sent.
Football 3; Junior Chorus 1; Choir 2, 3, 4; Hi-Y 2, 3, 4; Latin
Club 2; Romance Language Club 3, 4; Speech Club 2, 3, 4;
Debating 2, 3, 4; N.F.L. 2, 3, 4; Parisian Circle 2, 3, 4; Beta
Club 3, 4; Service Club; Class Officer 1, 3, 4; Annual Staff
(Editor).

JANE SMITH

This cute little red-haired twin,
Doesn't seem to have an eye for men.
Junior Chorus 1; Home Ec. Club 2; Romance Language Club
3, 4; Commercial Club 3, 4; Tri-Hi-Y 2; Annual Staff.

JEAN SMITH

Although she is our other twin,
Will someday an honor win.
Junior Chorus 1; Home Ec. Club 2; Romance Language Club
3, 4; Commercial Club 3, 4; Tri-Hi-Y 2; Annual Staff.



Senior Class



CAROLYN COLLIER

Carolyn would find a big romance,
If she would only give Sam a chance.

Beta Club 3, 4; Tri-Hi-Y 2, 3, 4; Glee Club 2, 3; Junior Chorus 1; Orange & Black 1; Speech Club 2, 3, 4; Home Ec. Club 1; Commercial Club 3, 4; N. F. L. 4; Romance Language Club 3, 4; Latin Club 2; Service Club 4; Class Officer 1; Junior Red Cross Council 1, 2; Annual Staff.

GLEN WAGNER

All good things must come to an end
Miss Noland says, "Goodby, Glen!"

Basketball 1, 2, 3, 4; Football 4.

ELIZABETH SCOTT

No one can keep up with Lizzy,
Because her beaus keep her in a tizzy.

Tri-Hi-Y 2, 3, 4; Latin Club 2; Home Ec. Club 1, 2; Junior Chorus 1; Glee Club 4; Commercial Club 4.

EDWIN KIRKPATRICK

The title he's earned is "Man of the Hall",
Department for teachers he'd like to install.

Latin Club 2; Math Club 3; Hi-Y 4; Speech Club 2, 3, 4; N. F. L. 2, 3, 4; Service Club 4; Junior Chorus 1; Choir 2, 3; Beta Club 3, 4; Class Officer 1; Orange & Black 1; Basketball 1, Baseball 2, 3; Commercial Club 4; Debate 2, 3, 4; National Speech Tournament 3, 4; Annual Staff.

BEULAH SAYLOR

A gal who is New York bound,
Will sooner or later settle down.

Junior Chorus 1; Glee 2, 3, 4; Tri-Hi-Y 2, 3; Romance Language 3; Home Ec. 2, 4; Choir 4; Commercial Club 3, 4; Annual Staff.

BOBBY CRUMP

Nanner's is a good ol' guy,
To him, we hate to say good-by.

Commercial Club 3, 4; Hi-Y 4; Basketball 2, 3; Latin 2; Junior Chorus 1; Orange & Black 1; Annual Staff.





Senior Poem

We the Seniors of 53,
Do take our pens in hand,
And make tribute to our school,
The best in all the land.

We thank you, dear ole Paris High,
For years we've spent with you,
From the first grade to the twelfth,
You've tried to see us through.

Though some of us, it appears,
Were slow to learn at first,
You helped us wither our fears,
And for learning gave us thirst.

In the year of '47,
We left the lower grades,
We entered into Junior High,
Like a bunch of bonnie blades.

Then came '50 and that year,
We left our Junior High days,
To join the many in Senior High
To find our brighter ways.

To all our teachers thru the years,
We wish to tell them this,
Gee, thanks for all your moral help,
Now we can leave in bliss.

So now we close our final year,
But with this thought in mind,
Thank you, Alma Mater,
For being a school so fine.





President Gayle Rees
Vice President. . . . Elise Hill
Secretary Nellis Whalen
Treasurer Jeanette Ewalt

Juniors

Junior

Marilyn Logan
Charles Leeds
Jeanette Ewalt
Wanda Hughes

Nancy Clayton
Paul Sanders
Kathleen Peters
Gayle Rees

Joyce Lowry
Marion Johnson
Reva Turner
Sylvia Strickler

Mareese Downing
Stoner Parsons
Dorothy Keal
Jo Ann Fugate

Katie Rison
Betty Marshall
Donald Wells
Marjorie Elvove

Nancy Harney
Virgil Arnold
Mary Booth
Sue Del Campbell



Class

Wilma Rogers
Tommy Conner
Shirley Earlywine
Nellie Whalen

Sue Watlington
Bobby Toohey
Betty Lou Garrison
Brent Clay

Elise Hill
Peggy Horton
Charlotte Hughes
Billy Bob McIntire



Mary Sue See
Alfred Vickers
Lucy Worick
Yvonne Fishback

Barbara Jones
Anna Jones
Jimmy Wills
Janice Jackson

Mary Margaret Holbrook
Johnny Rowe
Faye Humphries





President . . . Tommy D. Belt

Vice President. . Donald Beheler

Secretary . . . Nancy Ballard

Treasurer . . . Lynn Santen

Sophomores

Sophomore

Billy Anderson
Marilyn Elvove
Tommy Belt
Betty Bruce Hall
Patty Dotson

Terry Lenox
Jean Harney
Bobby Dotson
Larry Jordon
Mary Nell McDermott

Donald Beheler
Helen Frakes
Betty Brophy
Billy Purcell

Sandra Connell
Bill Rinesmith
Joe Manning
Billye Jo Harney

Jerry Robin
Margaret Sue Anderson
Nancy Ballard
Tommy McMahan
Rosemary Butler

Jackie Maye
Eddie Lykins
Bonnie Lou House
Bobby Taylor
Virginia Burden

Marilyn Hurst
Dabney Johnson
Phyllis Gilvin
Jimmy Greer
Nancy McConnell



Class

Alice Langfels
Glenn Elam
Barbara Ann Jones
Donald Farris
Bobby McCord

Shirley Jones
Nelson Sadler
Betty Maxwell
Sharon Brown
Billy Collier

Ava Mae McCann
Roy Parker
Fred Bratton
Carol Anne Merringer



Dennis Spivey
Linda Jill Nolan
Bertha Myers
Charles Atkinson

Jane Turpin
Mike Woods
Ross Turpin
Shirley Stanforth
Patty Smith

Tommy Fullington
Junior Warren
Lynn Santen
Vol Ferguson
Charlotte Waugh

Joyce White
Alice Wigglesworth
Janet Shout
Rose Carol Shumate
Bill Adams



WOULDN'T IT BE FUNNY IF -----?



1. Barbara Rinesmith fulfilled her dream to become a major league baseball player?
2. Eunice Warren or Eva Puckett didn't say a word?
3. Jake Boyle became President of the United States?
4. One of Mr. Malone's senior boys (Sledd, Wagner, Neale, or Reynolds) didn't manage to slip by him and get in at the head of the lunch line.
5. That famous quartet that sang in Mr. Malone's room just before Christmas, composed of Langfels, Clark, Kearns, and Company lost their sweet melodious voices?
6. Paul Craycraft recited a poem in English Class?
7. Jean and Jane Smith came to school some morning and didn't look alike.
8. Donald Boyle was awarded a medal for safe, slow driving.
9. Martha Hudnall's cute dimples froze when she flashed some of her big smiles?
10. Nancy Bishop ever lost an essay contest?
11. Shirley Cain went to college?
12. George Letton got lost on the Winchester Road?
13. Betty Doyle became a French teacher? (She loves it so!)
14. Joan McCord became an instructor at M. M. I.?
15. Barbara James got some of her letters to her many boyfriends mixed up and sent the wrong one to the wrong boy? Oh--h Barb!
16. Ann Richardson became a tall, stately New York model?
17. Joy West and Elizabeth Scott missed a day of school?
18. Barbara Gilvin won the Academy Award for writing the top love story of the year?
19. Elizabeth Nichols lost her freckles?
20. Dorothy Burris adopted the Stone Age' lover's slogan "I came, I saw, I conked him."
21. Frances Doyle jumped up in the air and kicked her heels?
22. A "Gale" blew Cindy's way?
23. Carolyn Bowling could keep track of Donald Boyle?
24. Joann Ingels became a French phonetics instructor?
25. Harry Galbraith lost his genial smile and sense of humor?
26. Ellen Clinkenbeard found one "lucky" boy and settled down?
27. Mary Lou Sadler had forgotten how to cook hotdogs?
28. Betty Mason ever got a letter?
29. Bobby Crump actually managed to keep two eyes open in English Class?
30. Dorothy Fullington got a car?
31. Ann Clinkenbeard had triplets?
32. Barbara Shelley did something Sharpe?
33. Wilma McNees joined the Army?
34. Barbara McKenzie lost her giggles?
35. Carolyn Collier had written this?
36. Billy George made a certain Junior lass jealous because he brought Miss Noland a bouquet after the Senior Dance?
37. Catherine Nagle became a Metropolitan Opera Star?
38. Jimmy Dundon went to Margaret Hall to school?
39. Jessie Clark got "Combs" tangled in her hair?
40. Audrey Santen obtained for herself an Austin - North Middletown Style?
41. Edwin Kirkpatrick ceased talking!
42. Marilyn Jones was late for school?
43. Beulah Saylor became an All-American Soft-ball player?
44. Barbara Whirles made peace with her teachers?

Sports

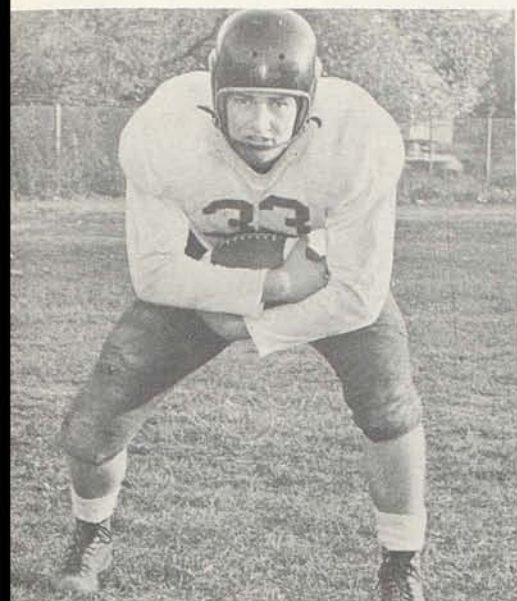




COACH ALLEN

FIRST ROW: Jake Boyle, Donald Beheler, Hart Sledd, Sam Reynolds, John Stuart, Eddie Lykins, Bill Ferguson, Charles Atkinson. SECOND ROW: Tommy Fullington, Larry Shriver, Harry Galbraith, Paul Sanders. THIRD ROW: Russell Kenney, John Thompson, Jimmy Kearns, Eddie Neale, Tommy Connors, Billy George, Tommy Turpin, Brent Clay, Jimmy Wills.

Seniors



REYNOLDS, SAMMY

Captain. A dependable man, good blocker, vicious tackler, as well as a hard worker. A four letter-man, he made Honorable-Mention All-State both his Junior and Senior years. He will be greatly missed next year.



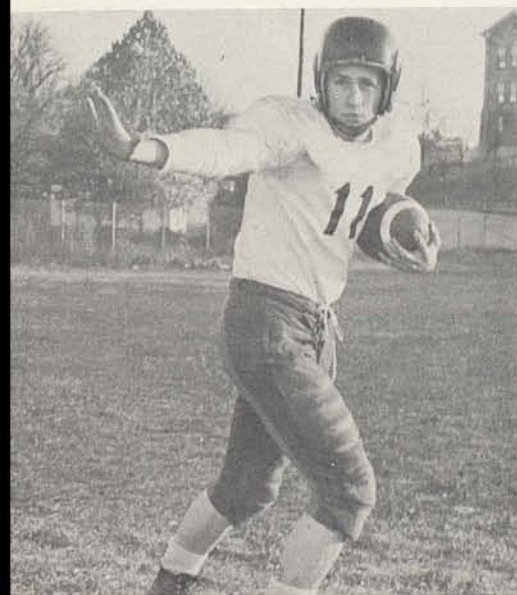
GEORGE, BILLY

One of those who are always willing to step in and hold a position calling for hard work.



GALBRAITH, HARRY

A fast-stepping, hard working tackle, always willing to get in there and give his best for the team.



SLEDD, HART

Co-Captain. A halfback whose hard play and excellent pass receiving brought Paris high School to the front many times during the last campaign. He made Honorable-Mention All-State his Senior year.



NEALE, EDDIE

A hard working guard capable of holding down his job and well-liked by his team mates.



KEARNS & BOYLE

Both of good ability who gave their all while on the field.



Football

The Paris High School Greyhounds began their season this year with the odds against them. With only eight varsity men returning and the smallest squad in the High Schools history, it was cinched the Greyhounds were to be the underdog this year. But contrary to these discouraging facts the squad played outstanding ball.

Due to its lack of manpower, the squad had to rely upon the airtight attack which, ultimately, became its greatest asset. The team possessed an excellent artsman of the air in Johnny Rowe, tailback. He passed with time and precision that marked him well above the average.

Piloting the team was Sammy Reynolds, right tackle and fullback. Sammy is an all round athlete and a problem for any opposition. Other linemen were: Turpin, End; Clay, Guard; George, End; Atkinson, End; Wills, Tackle; Kearns, Center; Neale and Lykins, Guard; and Wells, End. Starting in the backfield were: Beheler, Fullback; Conners, Blockingback; Sledd, Wingback; and Rowe, Tailback.

With a more experienced team returning, Greyhound fans are looking forward to the '53 season.



MY DAIRY

- (Tragedy on the field)
- Sept. 7, 1952 Rising early that morning found it to be first day of school, entering my last year of High School. Were to play Irvine in afternoon of this date. On field at 3:00. Warm-up then game time. Whole team played good game but first quarter jitters led to 13-0 defeat.
- (Another Loss)
- Sept. 12, 1952 First night game. Were to play Carlisle on latter's home field. Took opening kickoff and scored with wingback, taking scoring pass. Extra point missed. Was to be our downfall. Led till final quarter, then Carlisle took advantage of bad punt and scored. Final score was Paris-6 Carlisle-7.
- (Run Away)
- Sept. 19, 1952 Met C. K. C. Champs on our home field. Hard fought game but were too much for us. Scored in every quarter while holding us scoreless. Field was very muddy and very sloppy. Game ended with Georgetown on top 38-0.
- (Another Big Gun)
- Sept. 26, 1952 We met Cynthiana on their field and again were handed a very lopsided defeat. Played hard game but experience was in their favor. Again we were held scoreless while they were romping to victory. Final score was 43-0 in favor of Cynthiana. For the twelfth straight time Paris had not tasted victory.
- (Victory At Last)
- Oct. 3, 1952 Met K. S. D. (Kentucky School for the Deaf) on our field and after a two-year drought of victories, Paris tasted victory. A very lopsided victory it was too. K. S. D. fielded a hard fighting group of boys and a hard hitting group. Scored in all but one quarter. Final score. Paris 34 K. S. D. 7.
- (Another Good Game)
- Oct. 10, 1952 Met Danville on the Centre College field. Played good game and in my opinion was one of best teams we played all season. Very clean and hard fighting outfit. Very large squad fielded by Danville. Final Score was Danville 44 Paris 14.
- (Lose Hard One)
- Oct. 17, 1952 Played Winchester on their home court and for the first quarter played one of the best games of year. They scored two quick touchdowns in first quarter and then we settled down. We matched touchdown for touchdown and for the second time this year extra point lost game. Final Score Paris 19 Winchester 20.
- (Final Game)
- Oct. 24, 1952 Lost game of season played on home field. Shelbyville was visiting team. They were late and game didn't get started until late. Played on even terms for three quarters. Shelbyville then scored two quick times in final quarter. Final Score Shelbyville 21 Paris 7.



By Eddie Neale



Tommy McMahan

Billy Purcell

Gayle Rees

Hart Sledd



Billy George

Tommy Belt



Nelson Sadler

Brent Clay

Billy Bob McIntire

Bobby Toohey





Coach Ronnie Allen

FRONT ROW: Sam Reynolds, Mgr.; Billy Purcell, Hart Sledd, Gayle Rees, Tommy Belt, Billy George, Coach Allen. SECOND ROW: Billy Bob McIntire, Charlie Atkinson, Brent Clay, Tommy McMahan, Bobby Toohey, Nelson Sadler. BACK ROW: Donald Beheler, Eddie Neale, Glenn Elam, Vol Ferguson, Ross Turpin.

Basketball Seniors

THE GREYHOUNDS:

A small and inexperienced team. Not one man reached the 6' mark. Make up mostly of Sophomores and Juniors, we are looking forward with a great deal of enthusiasm for the next couple of years. With continued improvement and spirit this team should develop into a fine outfit by tournament time next year.

SAMMY REYNOLDS

Basketball Manager for 4 years. A very capable and dependable manager. A manager who always saw that the care and management of the equipment was in excellent condition.

HART SLEDD

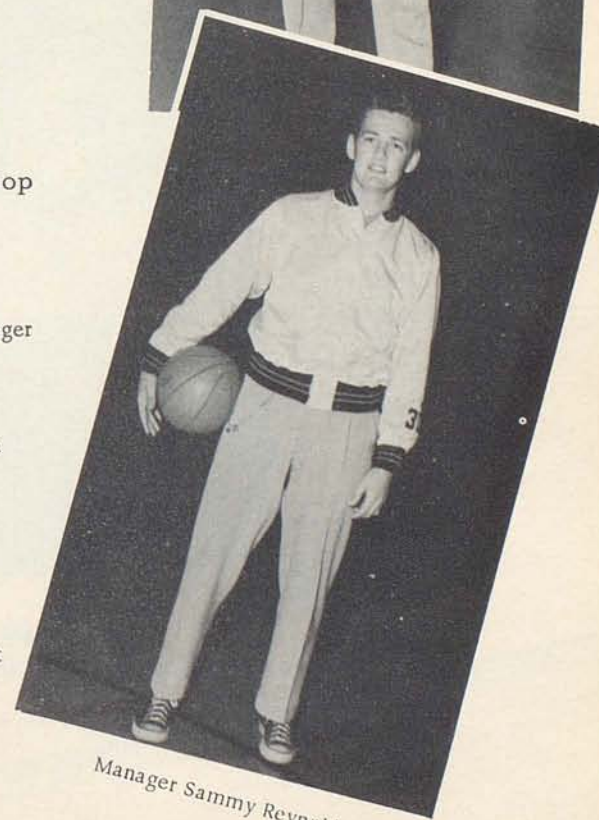
In basketball it is said that 60% is fight. What Hart lacked in ability and height he made up for in fight. One you could always depend upon to give you 100% all the time.

BILLY GEORGE

Despite his size, was one of the best board men in the conference. His hustle and fight brought Paris to the front on many occasions.

EDDIE NEALE

A reserve; although he did not see much action, was always ready to give his best for the team.



Manager Sammy Reynolds



SENIOR LETTERMEN

Billy George, Harry Galbraith, Eddie Neale, Sam Reynolds, Jimmy Kearns,
Donald Wells, Glen Wagner, Hart Sledd.

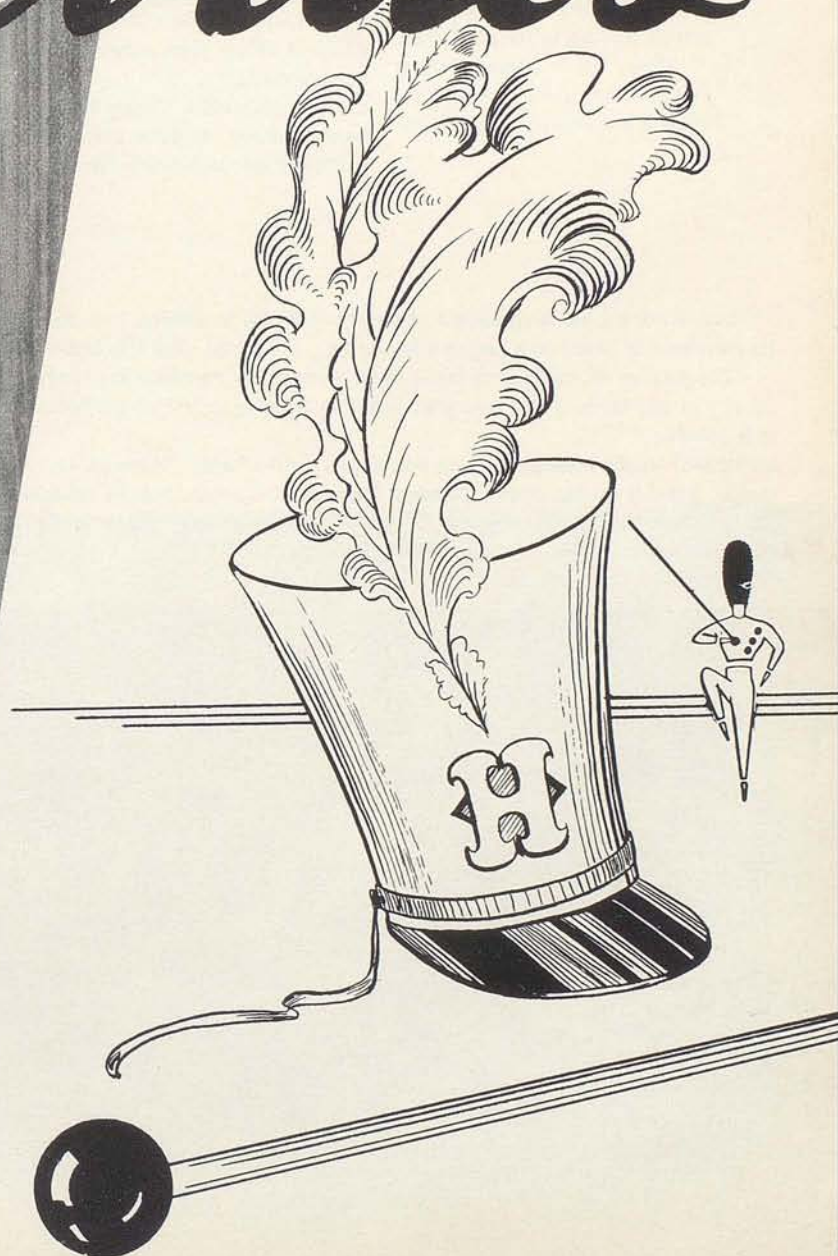


CHEERLEADERS

Joan McCord, Jo Ann Fugate, Rosemary Butler, Patty Dotson, Janice
Jackson, Lucinda Day.



Activities



The Parisian Circle



The Parisian Circle is an honor organization made up of two Sophomores, four Juniors, and six Seniors with high scholastic standings. Membership in this organization is one of the highest honors given in Senior High School. This club stands for the principles of honor, and high scholastic achievement.

SENIOR MEMBERS: Nancy Bishop, Donald Boyle, Jimmy Dundon, Ann Richardson, Barbara Shelley, George Letton. JUNIOR MEMBERS: Mary Booth, Gayle Rees, Nancy Harney, Jo Ann Fugate. SOPHOMORE MEMBERS: Jimmy Greer, Jean Harney.

The Service Club is composed of twenty-one (21) members. It is an honorary organization with its membership based on a person's leadership, character, and scholastic standings.

The purpose of this club is found in its name. The members are ready and willing to assist the faculty at any time. They take great pride in offering to help them before being asked, whenever it is possible.

MEMBERS: Nancy Bishop, Carolyn Bowling, Dorothy Burris, Shirley Cain, Carolyn Collier, Betty Doyle, Francis Doyle, Jimmy Dundon, Dorothy Fullington, Martha Hudnall, Joann Ingles, Marilyn Jones, Edwin Kirkpatrick, George Letton, Catherine Nagle, Elizabeth Nichols, Sam Reynolds, Barbara Rhinesmith, Audrey Santen, Barbara Shelley.



The Service Club



LUSUS PUER AENEAS

O noble Aeneas most puis hero,
 Cum heart as cruel as that of Nero,
 Qui standeth cum emmoto eye,
 Dum bitter words ex Dido fly,
 Nec pitiest her in medius foes
 Quamquam she has many hostes,
 You claim to be a summer hospes
 Et nunc he leavest her parace
 Et leaves the troubles for her poctare.
 Tu es no hero brave et vicilis
 Es solum aestatis lusus-puer (is)!!

RESPONDEO

Voca me what you wish
 Sed Dido erat quite a dish.
 Per Mama's help et quoque Cupid
 Cum love erat soon made stupid.
 Cum Juno playing priest we wed.
 The ceremony venit ad her head.
 Tam I played along pro Aestas,
 Tum I thought of my pietas,
 Itaque navigabam per the sea,
 What's aluid broken cor a d me!

ROMANCE LANGUAGE CLUB

This club consists of first and second year French and Spanish students. Its purpose is to instruct the students in the language and the customs of the countries speaking these languages.

Miss Margaret Yates is the sponsor.

OFFICERS

President . . . Audrey Santen
 Vice President. Eddie Neale
 Secretary . . . Martha Hudnall
 Treasurer . . . Betty Doyle
 Reporter. . . Wilma McNees



The Beta Club



The Beta Club, under the sponsorship of Miss Gilbert Lavin, is a National Honorary Society, organized to encourage achievement, character, leadership, and a high scholastic standing among high school students.

The first assembly program arranged by the Beta Club this year was an induction ceremony for new members. Dr. Frank Ross, President of Transylvania College, was our guest speaker.

Seven members from our club attended the State Beta Convention in Louisville, in December. This year we had one article published in the National Beta Club Journal.

The Beta Club acts as a service organization and assists at many school functions during the year. We have sold tickets for football and basketball games during the season and for the tournaments. We have assisted at teas of the classroom Teachers Association and we help in the library.

The officers of the Beta Club are:

President	Ann Richardson
Vice President	Carolyn Bowling
Secretary	Frances Doyle
Treasurer	Nancy Bishop

The Mathematics Club is made up of students in the Sophomore Class having Honor Roll grades in Mathematics. At each meeting a program of interesting problems was given. An article on the beginning of Mathematics was introduced to the members.

On May 16th the members visited the Zoo and Coney Island in Cincinnati.

The officers are: President, Linda Jill Nolan; Vice-President, Marilyn Elvove; Secretary, Sharon Brown.

Members are: Virginia Burden, Sandra Connell, Pat Dotson, Jimmy Greer, Dabney Johnson, Barbara Jones, Ava Mae McCann, Marynell McDermott, Jerry Robin, Patty Smith, Shirley Stanforth, Jane Turpin and Mr. John Mason-Advisor.

The Mathematics Club





SPEECH CLUB

FIRST ROW: Sue Watlington, Sylvia Strickler, Jeanette Ewalt, Ann Richardson, Joann Ingels, Audrey Santen, Barbara James. SECOND ROW: Sandra Connell, Jill Nolan, Mary Nell McDermott, Dorothy Burris, Shirley Cain, Jimmy Dundon. THIRD ROW: Miss Zerelda Noland, Marjorie Elvove, Nellie Whalen, Elise Hill, Marilyn Jones, Carolyn Bowling. FOURTH ROW: Edwin Kirkpatrick, Shirley Stanforth, Gayle Rees, Jo Ann Fugate, Sam Reynolds, Carolyn Collier.

NATIONAL FORENSIC LEAGUE

The National Forensic League is a nation wide honor society, for those speech students who earn twenty forensic points. Its purpose is to promote the interests of inter-scholastic speech events by conferring upon deserving candidates a suitable reward.

Officers of the National Forensic League are:

President Marilyn Jones
Vice President Joann Ingles
Secretary Jimmy Dundon



PROSE AND POETRY CONTESTANTS

SEATED: Nellie Whalen, Sylvia Strickler, Suzanne Watlington, Jane Toohey, Barbara James, Jean Harney, Dorothy Burris, Elise Hill. STANDING: Rebecca Gaitskill, Ann Thompson, Miss Yates; Coach, Ann Barnett, Jane Florence, Joan Ingels, Jimmy Dundon, Audrey Santen, Marilyn Jones, Edwin Kirkpatrick, Miss Lovell; Coach, Carolyn Collier, Miss Noland; Coach, Jo Ann Fugate, Shirley Stanforth.

Tri-Hi-Y Club

OFFICERS

President	Nellie Whalen
Vice President. . . .	Sue Watlington
Secretary	Joyce Lowry
Treasurer	Wilma McNees
Chaplin	Barbara Ann Jones

The Tri-Hi-Y Club is sponsored by Miss Isgrig and is made up of girls from the Sophomore, Junior, and Senior Classes.

The purpose of the club is to develop good moral standards and cultivate good character. The club is dedicated to civic works and projects which have in mind the betterment of the community.

The Paris Hi-Y Club, with Mr. John Malone as advisor, advanced considerably this year toward it's goal of encouraging high standards of Christian character. The motto of the Hi-Y is clean speech, clean scholarship, clean living and clean athletics. During the year the club participated in school and charitable projects and sent representatives to the Youth and Government Assembly in Frankfort.

Hi-Y Club

OFFICERS

President	Sam Reynolds
Vice President. . . .	Hart Sledd
Secretary	Jimmy Dundon
Treasurer	Donald Boyle
Chaplin	George Letton
Sergeant-at-Arms . .	Jimmie Kearns



The Chapel Choir



The Chapel Choir is composed of thirty-four members and is under the direction of Miss Terpsythea Chalkas. The members are chosen from the Sophomore, Junior, and Senior classes. They sing at various programs throughout the year and give some very fine presentations. The members are:

Shirley Cain, Sue Del Campbell, Lucinda Day, Rose Shumate, Betty Doyle, Dorothy Fullington, Beulah Saylor, Martha Hudnall, Barbara Whirls, Jeanette Ewalt, Marilyn Elvove, Marjorie Elvove, Sylvia Strickler, Audrey Santen, Elizabeth Nichols, Carolyn Bowling, Dorothy Keal, Mary Nell McDermott, Carol Ann Merringer, Peggy Horton, Elise Hill, Mary Sue See, Accompanist-Patty Dotson; Donald Beheler, Jimmy Dundon, Tommy Fullington, Gayle Rees, Buddy Leeds, Samuel Reynolds, Hart Sledd, Eddie Lykins, Jimmy Wills, Jerry Robins, Tommy MacMahan, Dabney Johnson.

FRONT ROW: Patty Smith, Joyce White, Billye Joe Harney, Helen Frakes, Bonnie House, Frances Doyle, Betty Doyle, Phyllis Gilvin, Barbara Jones, Miss Chalkas. SECOND ROW: Jean Harney, Janice Jackson, Shirley Jones, Wanda Hughes, Reva Turner, Charlotte Hughes, Joan Ingles, Audrey Santen. THIRD ROW: Joyce Lowry, Nancy Ballard, Jill Nolan, Margaret Anderson, Rose Carol Shumate, Elizabeth Nichols, Elizabeth Scott, Mary Margaret Holbrook, Marjorie Elvove. FOURTH ROW: Sue Del Campbell, Lynn Santen, Jane Turpin, Betty Brophy, Rosemary Butler, Lucy Worick, Sue Wallington, Martha Hudnall. FIFTH ROW: Marynelle McDermott, Shirley Stanforth, Joan McCord, Barbara McKenzie, Barbara Whirls, Beulah Saylor, Yvonne Fishback. SIXTH ROW: Carol Ann Merringer, Marilyn Elvove, Mary Booth, Faye Humphries, Barbara Gilvin, Marilyn Hurst, Janet Shout. SEVENTH ROW: Alice Wigglesworth, Betty Hall, Nellie Whalen, Patty Dotson, Jo Ann Fugate.

The Glee Club is composed of a selected group of girls from Senior High. The members are very capably directed by Miss Chalkas.



The Band



The Paris High School Band continued its work this year under a new staff. The band performed at football and basketball games at home and away, and in parades.

The top performance of the band was at the Paris - Clark County basketball game under the direction of one of its own members, Tommy Fullington.

The officers of the band are:
 President . . . Dotty Fullington
 Vice President. Tommy Fullington
 Secretary and Treasurer . . .
 Sue Del Campbell
 Efficiency Managers.
 Freddie Bratton,
 Dabney Johnson, Jimmy Greer

Majorettes

Lucy Worick, Sylvia Strickler, Barbara James, Carolyn Bowling, Billye Jo Harney.







1. Mary Lou. 2. Dorothy B. 3. Jessie M. 4. Elizabeth. 5. Barbara S. 6. Catherine. 7. Audrey. 8. Joan Mc. 9. Shirley. 10. Frances. 11. Joy. 12. Ann. 13. Bob. 14. Jimmy. 15. Paul. 16. Barbara G.



Junior High Class Officers

FRESHMEN: Larry Shriver, Marium Thomas, Charlene Florence, Johnny Thompson, Sue Ewalt, Floyd Townsend, Berle Clay, Jane Florence and Sara Hyden.

EIGHTH GRADE: George Wigglesworth, Erva King, Rebecca Gaitskill, Judith Allen, Jimmy McKinney, Rebecca Burnett, Harry Archibald, Michael Thorton, Hazel Berry, Doris Ramey, Bradley Logan.

SEVENTH GRADE: Susan Day, Ennis Smits, Leslie Smith, Dale Greer, Joe Elvove, David Crump, Clyde Parsons, Mary Martin Taylor, Dona Boettcher, Shirley Doyle, Jack Woodford, Dave Parrish.



Freshman Class History

Here we come Senior High - ready or not. We are bringing with us forty-one kids, we hope!! Several of our boys took part this year in baseball, basketball and football. Our three cheerleaders were Jane Toohey, Captain; Jane Florence and Marium Thomas. The hero of our class is Tommy Turpin, who saved a little boy from drowning. Several of our students took part in speech contests. Twenty per cent of our class wrote in the Orange and Black Book for the second time. We are looking forward to the next three years and hope to continue our record, scholastically and otherwise.

CLASS ROLL

Harry Archibold
Anne Barnett
Berle Clay
Betty Davis
Susan Day
Betsy Doyle
Sue Ewalt
Jane Florence
Patsy Flynn
Mary Joe Fuller
Kay George
Helen Gray
Bobby Hudnall
Sara Hyden

Doris Jones
Laura Judy
Patty Leeds
Bradley Logan
Betty Million
Anne Morris
Larry Myers
Lonnie McCord
Ralph Parsons
Billy Pitts
Billy Ragland
Warner Rankin
Bobby Ricci
Jackie Riggert

Emma Jean Shelburne
Lillard Shelley
Larry Shriver
Bobby Slack
Johnny Stuart
June Taylor
Marium Thomas
Anne Thompson
John Thompson
Jane Toohey
Floyd Townsend
Tommy Turpin
Belle Brent Ward



We, the Eight Grade, wish to express our appreciation to our teachers, Miss Kathleen Lovell, Miss Marion Mitchell, and Miss Alice McClintock who have helped us so whole-heartedly in this, our second year of Junior High School.

During the year we have tried to meet our quota in the Red Cross and other drives. Several of our students entered the Junior High Speech Contest.

Rebecca Gaitskill, Judith Allen and Hazel Berry are our cheerleaders. We are represented on the basketball squad by George Wigglesworth, David Crump, Russell Kenny and Billy Jefferson.

We have enjoyed our first two years of Junior High and are looking forward to the third with great pleasure.

Kay Collier

Judith Allen
John R. Bell
Hazel Jean Berry
Donald Brown
Russell Brunner
Evelyn Buchanan
Rebecca Burnett
Margaret Calvin
Janice Carr
James Cartmill
Leroy Clark
Barbara Ann Clough
Kay Collier
Mary Helen Collins
Sally Jo Collins
David Crump
Judy Culbertson
Beth Davis
Bonnie Dixon
Wilbert Dotson
Nellie Downing
Shirley Doyle
Barbara Eads
Nancy Elvove
Larry Feld
William Ferguson

Charlene Florence
Woodie Florence
Jo Anne Flynn
Kent Gaitskill
Rebecca Gaitskill
Ray Gant
Juanita Garrison
Stanley Garrison
Alice Gaunce
Charlene Gaunce
Charles Gray
Robert Hopkins
Sharon Jackson
Elinor James
William Jefferson
Ray Johnson
Billy Jones
Janice Faye Jones
Garlan Jordan
Martha Keal
Russell Kenney
Earleen Kenton
Erva Jean King
Betty Lair
Gayle Lawrence
Joe Lyons

Larry McCord
Jimmy McKinney
Janet Maye
Allen Miller
Martha Moore
Jeri Neale
Betty Lee Oldson
David O'Neill
Clyde Parsons
George Pennington
Phyllis Peters
Doris Ramey
Bobby Rankin
Larry Ransdell
Emma Jean Richardson
Larry Rife
Sonja Salyer
Betsy Talbot
Peggy Thompson
Michael Thornton
Winn Turney
Betty Vandy
Frank Whalen
Dorothy Withrow
Tommy Watson
George Wigglesworth



SEVENTH GRADE

We all enjoyed our first year in Junior High and think it is great! Our Seventh Grade home-room teachers are Miss Purcell, Miss Purnell, and Mr. Baker. All together we enrolled ninety-six pupils. Our cheerleaders were Sonja Oldson and Barbara Sowards as substitute, and we are certainly proud of the fine work they have done.

We're also proud of the fact that our grade was the first to have Mr. Baker as home-room teacher.

All together we'd like to say that we think Junior High and everything that goes with it is great.

Ennis Smits

Billy Baber
Janice Bates
Russell Bell
Donna Boettcher
John Brennan
Patsy Bowman
Tommy Bowman
Edward Boyle
Harold Browning
Aylette Buckner
Susanne Burnett
Dora Calvin
Billy Caywood
Jane Caywood
William Conyers
Joan Cooper
Annetta Crossfield
Martha Day
Helen Eads
Mary Elkins
Joe Elvove
Hume Ferguson
Ruth Frakes

Bobby Gant
Nancy Gardner
Carolyn Gaunce
Roy Gaunce
John K. Gay
Gordon Goode
Dale Greer
Beverly Hinkson
Peggy Humphrey
Mary Jo Hyden
Wayne Jordan
Margaret Kenny
Leslie Lawrence
Robert Letton
Bobby Linville
Billy McCracken
Patricia McFarland
Bobby Million
Olivia Minyard
Clyde Morris
David Morris
William Morris
Donald Myers

Donald Nichols
Novellia Nolan
Sonja Oldson
Jerry Ormes
Dave Parrish
Donna Price
Mary Pruitt
Melvin Puckett
Ralph Reed
Adrian Reynolds
Morrow Richards
Don Robertson
Betty Roe
Marilyn Sadler
Ralph Shelley
Leslie Smith
Neulan Smith
Ennis Smits
Paul Snapp
Merrill Snowden
Kitty Lou Sousley
Barbara Sowards

Doug Stanfield
Helen Stanfield
Barbara Stevens
June Stivers
Sandra Strickler
Mary Martin Taylor
Beverly Taylor
Forrest Thomas
Jean Thompson
Zereda Thompson
Mildred Turpin
Charles Watson
Robert Waugh
Billy Weaver
James Williams
Robert Williams
John Wilson
Terry Wilson
Floyd Withrow
Jack Woodford
Patty Page Woodford
Betty Zapolsky



Junior High Honor Society SCHOLARSHIP

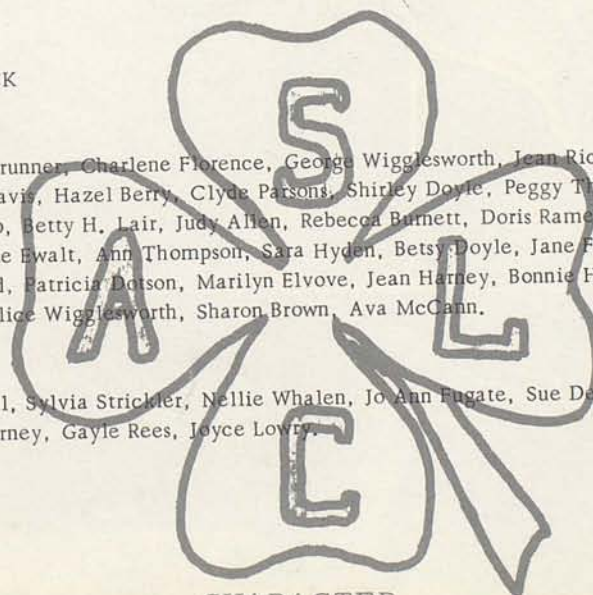
ORANGE AND BLACK

MEMBERS:

1ST YEAR: Russell Brunner, Charlene Florence, George Wigglesworth, Jean Richardson, Charlene Gaunce, Kay Collier, Beth Davis, Hazel Berry, Clyde Parsons, Shirley Doyle, Peggy Thompson, Martha Keal, Joella Logan, David Crump, Betty H. Lair, Judy Allen, Rebecca Barnett, Doris Ramey. 2ND YEAR: Ann Barnett, Marjorie Thomas, Sue Ewalt, Ann Thompson, Sara Hyden, Betsy Doyle, Jane Florence, Jane Toohey. 3RD YEAR: Nancy Ballard, Patricia Dotson, Marilyn Elvove, Jean Harney, Bonnie Hause, Sandra Connell, Shirley Stanforth, Alice Wigglesworth, Sharon Brown, Ava McCann.

PROGRAM

SPEAKERS: Elise Hill, Sylvia Strickler, Nellie Whalen, Jo Ann Fugate, Sue Del Campbell, Mary Booth.
 TAPPERS: Nancy Harney, Gayle Rees, Loyce Lowry.



ACTIVITIES
 ATTITUDE

LOYALTY
 LEADERSHIP

CHARACTER



H O N O R S



Marilyn Jones, Audrey Santen, Edwin Kirkpatrick,
Jimmy Dundon.

State Winners-Debating
Eyttemporaneous Speaking
State Winner And Fifth Place
National Tournament -
Edwin Kirkpatrick

NATIONAL FORENSIC LEAGUE TOURNAMENT
Denver, Colorado



SAM REYNOLDS
Rotary Athletic Cup
Football
Alumni Athletic Cup



HART SLEDD
Rotary Athletic Cup
Basketball



THE SENIOR CLASS
presents
MOTHER IS A FRESHMAN
Cast

Mrs. Abigail Abbott	Marilyn Jones
Susan	Carolyn Bowling
Mrs. Miller	Joann Ingels
Sylvia	Audrey Santen
Bunny	Barbara James
Helen	Carolyn Collier
Carrie	Ann Richardson
Clara	Dorothy Burris
Marge	Barbara Rhinesmith
Bobo	Edwin Kirkpatrick
Jack	George Letton
Howie	Hart Sledd
Bill	Jimmy Dundon
Dean Gillingham	Donald Boyle
Professor Michaels	Bobby Crump



Washington Trip





RECEIVING LINE

Gayle Rees, Lucinda Day,
Elise Hill, Mary Booth,
Jo Ann Fugate, Billy George,
Nancy Harney, Jeannette
Ewalt, Bill Webb.



Junior

1953

Good

Night

All



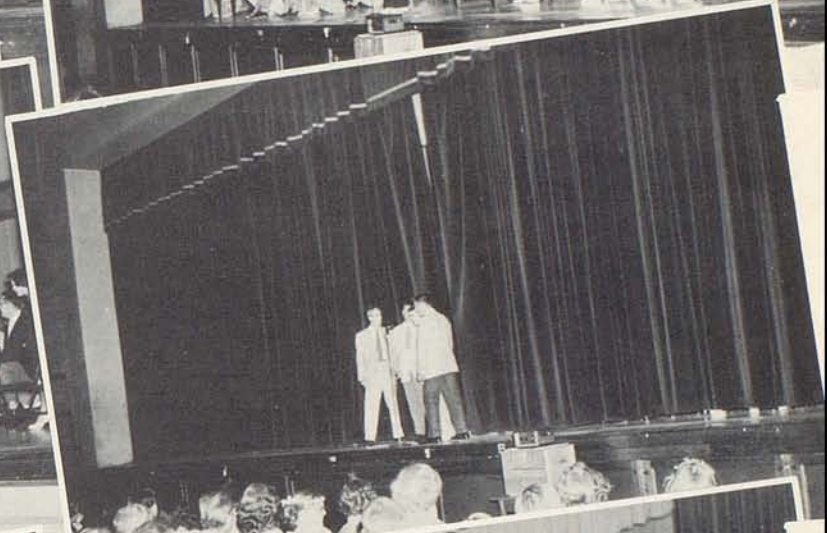
*The
Junior
Prom*



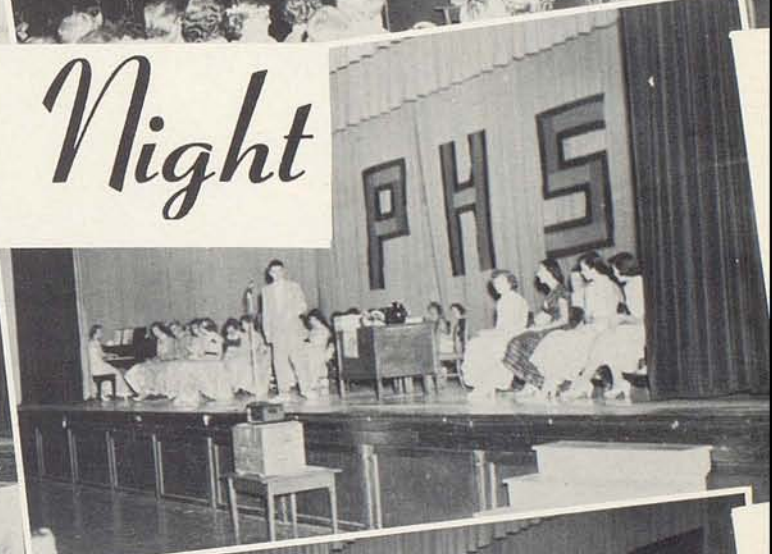
P. H. S.

GRAND MARCH





Class Night





SENIORS

Graduation

PARIS SENIOR HIGH SCHOOL

COMMENCEMENT

First Christian Church, Paris, Kentucky

Organ Prelude Mrs. Clay Sutherland

Processional Mrs. Clay Sutherland

Invocation Rev. Rhodes Thompson
Pastor First Christian Church, Paris, Ky.

Music Girls' Glee Club, Paris City Schools

Address to Graduates Hon. Adron Doran
State Dept. of Education, Frankfort, Kentucky

Presentation of Diplomas Attorney D. D. Cline
President, Paris City Board of Education

Music Girls' Glee Club, Paris City Schools

Presentation of Senior High School Awards .. Prof. Wm. F. Russell
Principal, Paris Senior High School

Benediction Rev J. W. Clotfelter

Organ Postlude Mrs. Clay Sutherland



Mr. William F. Russell
Presenting Diploma.

1953



Continental SNAPP PRINTING CO., Paris, Mo.

Paris High School
Alumni Banquet



AUTOGRAPHS

Don Boyle
Wilma M. Kues
Edwin Keitpatrick
Victor Clark
Catherine Nagle
Marilyn Jones
Samuel W. Reynolds
Frances Doyle
Ann Richardson
Betty Doyle
Eva Ricketts
Martha Hudnall
Jimmy Dandon
Emice Warren
Barbara Sue Whiles
Jean Smith
Barbara Hilmer
Lucie Chasin
Clark
Harry D. Galbraith
Barbara McHenry
Ed. Neale
Billy Leage
Joann Ingle
Dorothy Morris
Elizabeth Nichols
Jane Smith
Nancy Bishop
Paulah Taylor
Barbara James
Elizabeth Scott
Joy West
Betty Mason
Audrey Barker
Ann Clinkbeard
Ellen Clay Clinkbeard
Carolyn Collier
Lucinda Clay
Barbara Shelly
Joan McCloud
Barbara Rinesmith
Carolyn Bowling
Shirley Cairn
Bob Crump
Thomas Hart Sledd
Dorothy C. Setton
Billy Langfells
Jake Boyle
Mary Lou Sadler
Crayford
Ann Richardson
Betty Doyle
Barbara Sue Whiles
Jean Smith
Barbara Hilmer
Jane Smith
Elizabeth Scott
Joy West
Betty Mason
Audrey Barker
Ann Clinkbeard
Ellen Clay Clinkbeard
Carolyn Collier
Lucie Chasin
Clark
Tom P. Wagner
Dorothy Jellings

Sell Your
TOBACCO

at
Paris, Ky.

The only market in the State to lead
the entire Burley Belt seven out of ten.

There is a reason Why

This market has nine (9) modern, well-lighted warehouses,
with floor space for ten thousand baskets, and all sold
every six days.

Take Your Choice And Try To Get In

THE FARMERS TOBACCO WAREHOUSES
Phone 422

THE PARIS TOBACCO WAREHOUSES
Phone 1275

THE INDEPENDENT TOBACCO WAREHOUSES
Phone 1198

Best Wishes

from

HANSLEY MILLS

A Good Place To Work

WILSON BROS.

Appliances - Hardware - Implements

Phone 164

Paris, Kentucky

"Let's Build Together"

SHEELER LUMBER CO.

500 Phones 300

The Buildings We Build - Build Our Business

Compliments of

BOURBON LUMBER CO.

Incorporated

A. B. Hancock Jr., President

Compliments of

THE NATIONAL BANK and TRUST CO. OF PARIS

Member of the Federal Insurance Corporation

Known For Better Values

LERMAN BROS.

Cash Department Store

Paris --- Kentucky

Compliments of

ARDERY'S DRUGS

Phone 50 Cor. 7th & Main

Compliments

of

JACKSON RADIO SHOP

Guaranteed Expert Radio and

Television Service

Compliments of

ELECTRIC STEAM RADIATOR

CORPORATION

Paris, Ky.

Compliments

McALPIN'S

Paris, Ky.

Compliments of

MAIN STREET GARAGE

Oldsmobile Sales and Service

PEOPLES DEPOSIT BANK

AND TRUST COMPANY

"This bank appreciates your patronage"

Compliments

of

PARIS LIONS CLUB

Compliments of

PARIS STOCKYARDS

"Sales Every Friday"



Compliments

of

BOBBITT AND HUDSON

Pontiac Cars

G. M. C. Trucks



Compliments of the

BOURBON AGRICULTURAL

BANK AND TRUST CO.

People Who Know Prefer

"Bell's Beverages"



Because of the Superior Quality


and

Real Natural Flavor

BELL BOTTLING CO., INC.


Paris, Ky.

<p>Compliments</p> <p>of</p> <p>BALDWIN HOTEL</p>	<p>Compliments of</p> <p>J. C. PENNEY CO.</p> <p>"Where a nation shops and saves"</p> <p>Always First Quality</p>
<p>Compliments of</p> <p>DIXIE RESTAURANT</p> <p>Fine Foods and Beverages</p>	<p>Compliments of</p> <p>SCHINE THEATRES</p>
<p>Compliments of</p> <p>BOURBON LOCKER PLANT</p>	<p>J. K. GREER</p> <p>Jeweler - Optometrist</p> <p>Gifts</p> <p>604 Main Street</p>
<p>WESTERN AUTO ASSOCIATE STORE</p>  <p>Edwin "Kirk" Kirkpatrick</p> <p>Owner</p>	<p>CHAS. P. COOK CO.</p> <p>Frosted, and S. & W. Foods</p> <p>Phones 206-207</p>
 <p>Authorized Frigidaire Dealer</p> <p>GUDGELL APPLIANCE COMPANY</p> <p>Noel E. Gudgell</p> <p>Day Tel 187 800 Main St. Night Tel. 971 Paris, Ky.</p>	<p>JACK COHAN & SONS</p> <p>Bostonian Shoes Disney Hats</p> <p>Phone 535 Paris, Ky.</p>
<p>Ph. 35</p> <p>STRICKLER FURNITURE CO.</p> <p>Makers Of Fine Upholstered Furniture</p> <p>Period Reproductions And Antiques</p> <p>Kentucky's Finest Upholsterers</p> <p>Refinishing -- Repairing</p> <p>Slip Covers -- Draperies</p> <p>H. L. Strickler, Mgr. Paris, Ky.</p>	<p>The City of Paris is always willing to co-operate with our schools in their undertakings.</p> <p>CITY OF PARIS, KENTUCKY</p> <p>Geo L. Doyle W.S. Chisholm Emil Rains Wm. Brophy</p>

<p>Compliments of</p> <p>MACK'S LUNCH</p> <p>Good Home Cooked Food</p>	<p>Compliments of</p> <p>ADAMS AND WATSON DRUGS</p> <p>Reliable Prescriptions</p>
<p>Compliments</p> <p>of</p> <p>BLUE GRASS BILLARD PARLOR</p>	<p>HUSTON AND DOYLE</p> <p>Plumbing and Heating</p> <p>So. Main St. Paris, Ky.</p>
<p>H. E. CRUMP</p> <p>GULF SERVICE STATION</p> <p>Finest Service in Town</p>	<p>Furniture - Stoves - Rugs</p> <p>DORSEY FURNITURE CO.</p> <p>We deliver</p> <p>302 Main Paris, Ky.</p>
<p>Compliments of</p> <p>LANG'S SNACK SHOP</p>	<p>Compliments of</p> <p>TOMMY'S ICE CREAM BAR</p>
<p>Compliments</p> <p>of</p> <p>BOURBON TIRE SERVICE</p>	<p>Compliments of</p> <p>JAMES EVERMAN</p>
<p>Compliments of</p> <p>BOURBON FARM SERVICE INC.</p> <p>One Stop Farm Service</p> <p>Phones</p> <p>North Middletown 2611 Paris 1799</p>	<p>PIPES CHEVROLET COMPANY</p> <p>Sales  Service</p> <p>Phone 532</p>

<p>Compliments</p> <p>of</p> <p>DR. AND MRS. EUGENE HYDEN</p>	<p>SUMMERHAYES</p> <p>LUMBER & COAL CO.</p> <p>1318 S. Main St.</p> <p>Paris, Kentucky</p>
<p>Compliments</p> <p>of</p> <p>HINKLE CONTRACTING CO.</p>	<p>Compliments of</p> <p>JACK COHAN</p> <p>Crown Jewelers</p> <p>615 Main St. Paris, Ky.</p>
<p>Compliments</p> <p>of</p> <p>SAUER'S TEXACO SERVICE</p>	<p>Compliments of</p> <p>ELLIS JEWELERS</p>
<p>Compliments of</p> <p>PERKINS AND GRAY</p> <p>General Contractors</p>	<p>Compliments Of</p> <p>SMOKE HOUSE</p>
<p>Compliments of</p> <p>GOODMAN'S PAINT</p> <p>and</p> <p>SUPPLY CO.</p>	<p>RYE'S</p> <p>Misses' and Children's Apparel</p> <p>405 Main St. Paris, Ky.</p>
<p>Compliments of</p> <p>HAMILTON'S</p> <p>The Family Shoe Center</p> <p>Paris, Kentucky</p>	<p>MAIN STREET MARKET</p> <p>J. T. Tate & Sons</p> <p>Groceries & Fresh Meats</p> <p>Phone 16 & 1523 Main St.</p> <p>Paris, Ky.</p> <p>We Deliver</p>

MI-LADY'S BEAUTY SALON For The Lady Who Cares 431 Main Street Phone 448	Compliments of THE KENTUCKIAN - CITIZEN "Since 1807 a voice of the Bluegrass"
Compliments of DONALDSON & RICE INSURANCE AND REAL ESTATE Phone 600 520 Main Street Paris, Kentucky	Compliments of RAYMOND CONNELL
Compliments of PARIS AUTO SUPPLY Paris, Ky.	WORICK BROS. Dodge - Plymouth Phone 307
Compliments of THEODORE BUTLER JR. Television Sandwiches Cold drinks	Compliments of THE KIWANIS CLUB
F. C. JOHNSTON WELDING AND MACHINE SHOP	Compliments of WAGONER'S MARKET Winchester St. Paris, Ky.
FOOKES' GROCERY Groceries - Select Meats Fresh Fruits & Vegetables Phone 1372 400 W. 2nd Street Paris, Ky.	Compliments of BOURBON HOTEL Phone 1080

<p>FRED ATKINSON AND SONS</p> <p>FLORISTS</p> <p>Fresh Flowers Always</p> <p>Phone 38-J Paris, Ky.</p>	<p>If It Comes From Davis-It Is Right</p> <p>J. W. DAVIS & CO.</p> <p>Good Clothing Always</p>
<p>Compliments of</p> <p>VOGLER DRUG CO.</p> <p>"The Rexall Store"</p> <p>Paris, Kentucky</p>	<p>GRAY'S BARBER SHOP</p> <p>338 Main Street</p>
<p>Compliments of</p> <p>BEN COHEN SHOE STORE</p> <p>609 Main Street</p>	<p>Raymond E. Turner</p> <p>HINTON-TURNER FUNERAL HOME</p> <p>Since 1860</p> <p>Phone 55 Paris, Ky.</p>
<p>WOLLSTEIN'S</p> <p>"Everything Men and Boy's Wear"</p> <p>Phone 40 Paris, Ky.</p>	<p>GILBERT LYTLÉ</p> <p>Meats - Groceries</p> <p>Corner 10th & Main Phone 20</p>
<p>Compliments of</p> <p>WHEELER FURNITURE CO.</p> <p>Incorporated</p> <p>"The store where homes begin"</p> <p>530 Main St. Paris, Ky.</p>	<p>Compliments of</p> <p>KENTUCKY UTILITIES CO.</p> <p>Incorporated</p>
<p>Cars Trucks</p> <p>Implements Tractors</p>  <p>SOUSLEY MOTORS</p> <p>8th & High St. Phone 1550</p>	<p>DAUGHERTY PAINT & SUPPLY</p> <p>D. T. McCracken & Son</p> <p>Paint and Wallpaper</p> <p>Glass - Alsco Storm Sash - Doors</p> <p>434 Main Phone 231 Paris, Ky.</p>

<p>Compliments of</p> <p>SAMUEL MILNER</p>	<p>BRATTON'S</p> <p>Radio & Television Service Auto Radios a specialty</p> <p>Service guaranteed</p> <p>127 E. 8th St. Phone 1792</p>
<p>PARIS LIVESTOCK SUPPLIES</p> <p>Everything to meet your Livestock needs</p> <p>opposite Stockyards 1543 Main St.</p> <p>Phone 502</p>	<p>Compliments of</p> <p>BROPHY'S ELECTRIC SHOP</p> <p>Crosley Refrigerators</p>
<p>Compliments of</p> <p>CITY RADIO SHOP</p> <p>C. E. Plummer Prop.</p> <p>7th Street Paris, Kentucky</p>	<p>Compliments of</p> <p>PARIS GARAGE</p> <p>Buick-International Trucks</p> <p>4th & Pleasant St. Phone 566</p>
<p>Compliments of</p> <p>JONES SERVICE STATION</p> <p>14th and Main St.</p> <p>Paris, Ky.</p>	<p>Est. 1866 Phone 288</p> <p>SHIRE & FITHIAN</p> <p>"The House of Quality"</p> <p>Jewelry and Gifts</p>
<p>Compliments of</p> <p>the</p> <p>FARMER'S INN</p> <p>Joe McGurk, Prop.</p>	<p>SMITS GREENHOUSE</p> <p>Fine Flowers</p> <p>Expertly Arranged</p> <p>Phone 915 West Second St.</p>
<p>Compliments</p> <p>of</p> <p>TILFORD AND ROBERT BURNETT</p> <p>Texaco Service</p>	<p>DAVIS FUNERAL HOME</p> <p>"Now in our 105th year of service"</p> <p>Phone 137 Paris, Ky.</p>

<p>Compliments of</p> <p>NEALE'S RESTAURANT</p>	<p>Compliments of</p> <p>GRINNELL DRY CLEANING</p> <p>622 Main St. Phone 793 Paris, Ky.</p>
<p>Compliments of</p> <p>BOND CLEANERS</p>	<p>Studebaker Cars & Trucks Sales - Parts Factory Trained Mechanics</p> <p>BALDWIN MOTOR CO.</p> <p>813 Main St. Phone 510 Paris, Ky.</p>
<p>OWENS & TAYLOR MARKET</p> <p>Groceries - Fresh Meats</p> <p>We Deliver</p> <p>Phone 92 & 93</p> <p>Paris, Ky.</p>	<p>Compliments of</p> <p>COLONIAL MOTEL</p>
<p>HARRY D. GALBRAITH</p> <p>Groceries - Fresh Meats</p> <p>1501 South Main St.</p> <p>Paris, Ky.</p>	<p>FARRIS PHOTO STUDIO</p> <p>Portraits - Kodak Finishing</p> <p>512 Main St. Paris, Ky.</p>
<p>Compliments of</p> <p>BELT AND WATSON</p> <p>FOOD MARKET</p> <p>Free Parking</p>	<p>R. L. FILER AUTO BODY SHOP</p> <p>Dependable Auto Painting Upholstering and Body Service</p> <p>"We take the dents out of accidents"</p> <p>130 W. Eighth Street</p>
<p>C. ERNEST MARTIN</p> <p>for</p> <p>Your Real Estate and Insurance Needs</p> <p>Phones: Office 663 - Residence 888-J</p> <p>Paris, Ky.</p> <p>"The Best Town in America"</p>	<p>A Good School- A Good Student Body- A Good Faculty</p> <p>THE A. J. WINTERS CO.</p> <p>Jewelers</p>

Compliments of
BOURBON HATCHERY

and

"Pillsbury" "Ballard"

Compliments of
BOURBON LAUNDRY & DRY CLEANERS

147 W. 7th St. Paris, Ky.

Phone 4

Compliments to

The Senior Class

THE PARIS ROTARY CLUB

J. HAMLET COLLIER & SON
Electrical Contractors
Sales & Service
721 High St. Paris, Ky.
Phone 401-R

Other Friends & Patrons

Sanitary Barber Shop
Bus Station Cab
Lewis Barber Shop
Moore's Service Station
Honican Barber Shop
William C. Watkins
Mi-Lady Beauty Salon





MYERS AND CO, INC

TOPEKA, KANSAS

