

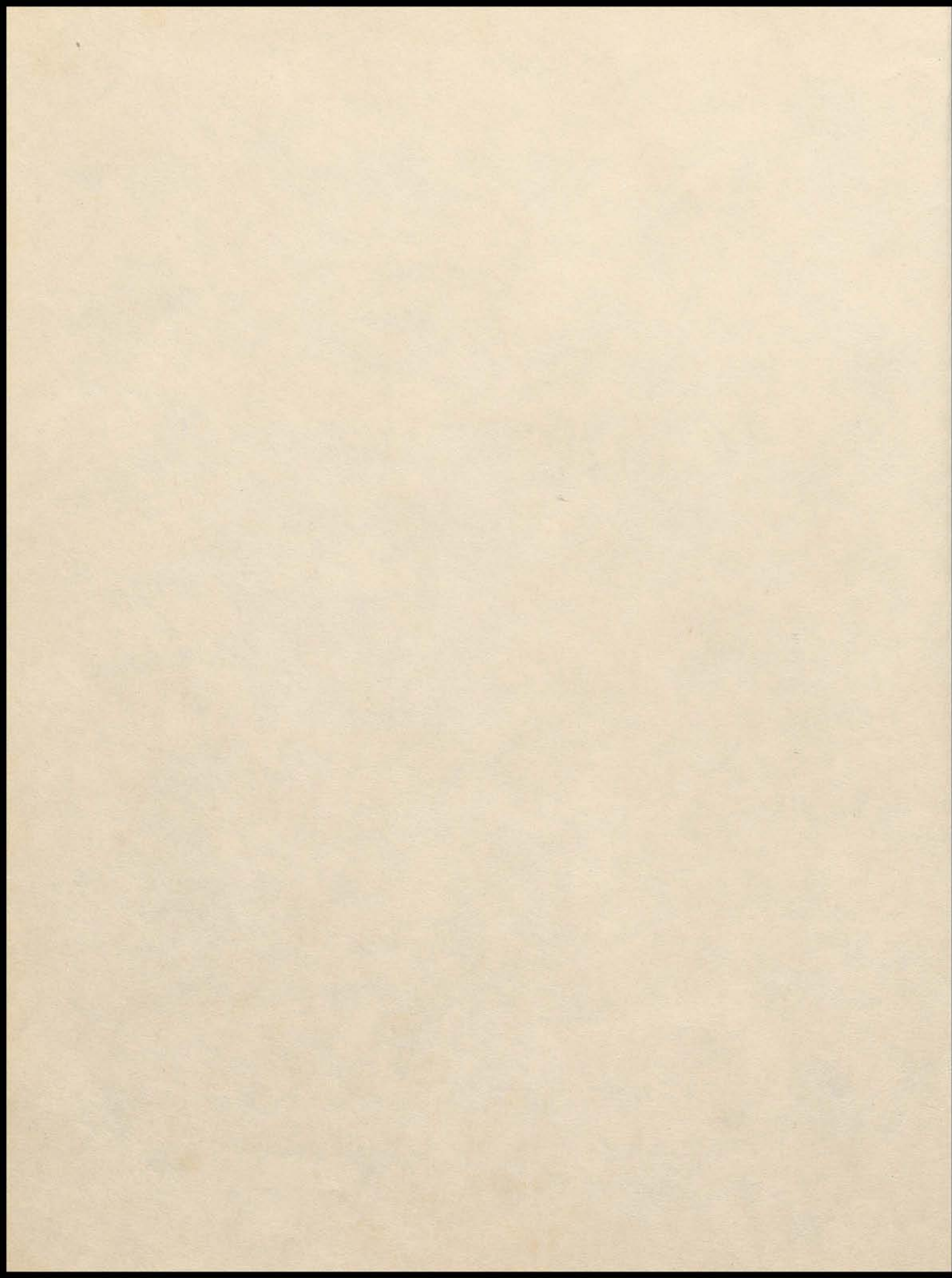


The Parisian

1954







"Published by
The Senior Class
PARIS HIGH SCHOOL
Paris, Kentucky
1954"

The Parisian



MR. WILLIAM RUSSELL
Superintendent

Dedication

We are extremely grateful for your encouragement and enthusiasm. You have each helped to make our Senior year enjoyable and unforgettable. Therefore, with highest esteem and appreciation, we, the Seniors of 1954, do dedicate the Parisian to you, Mr. Russell and Mr. Fair, hoping it will always be a reminder of your first year as the administrative heads of Paris High School.

"The most potent of all indirect influences in the development of our citizenry is the influence of a good teacher."

Armand Gerson



MR. DONALD FAIR
Principal

A. B. HANCOCK, Chairman of the Board

LOWEST PRICES FOR CASH

A. B. HANCOCK, JR., P

THE BOURBON LUMBER COMPANY

WOODFORD SPEARS & SONS

Thomas, Woodford & Company

INSURANCE

PHONE 62

G. P. BOBBITT
PRESIDENT



PONTIAC SALES & SERVICE

STATEMENT

Daugherty Chemical Co.
"YOUR CHEMICAL HEADQUARTERS"
PITTSBURGH PAINTS

Paris, Ky.

INCORPORATED
500 S. MAIN ST.

PARIS, KY.

FORD & CO.

LOWE BROS. PAINTS - CHINA AND GLASSWARE - JANITOR'S SUPPLIES
IRON AND HARDWARE - PAPER GOODS
PIONEER FARM FENCE - SEWER PIPE

PARIS, KENTUCKY

Because your devotion, interest, and guidance have inspired us to the higher things of life, and because you have provided us with all the necessities of living so that we might obtain our education, we take this opportunity to express our deepest appreciation to you, our parents.

In Appreciation



When we, the Seniors of 1954, begin to express our appreciation to those who have helped us in our school careers, we cannot possibly overlook the aid given to us by Mrs. Louise Clay, both in her capacity as librarian and as the Annual Staff advisor. Her never-failing interest and patience have been prime factors in making this annual a reality. Therefore, we extend to her our deepest gratitude and appreciation for all her aid and guidance.

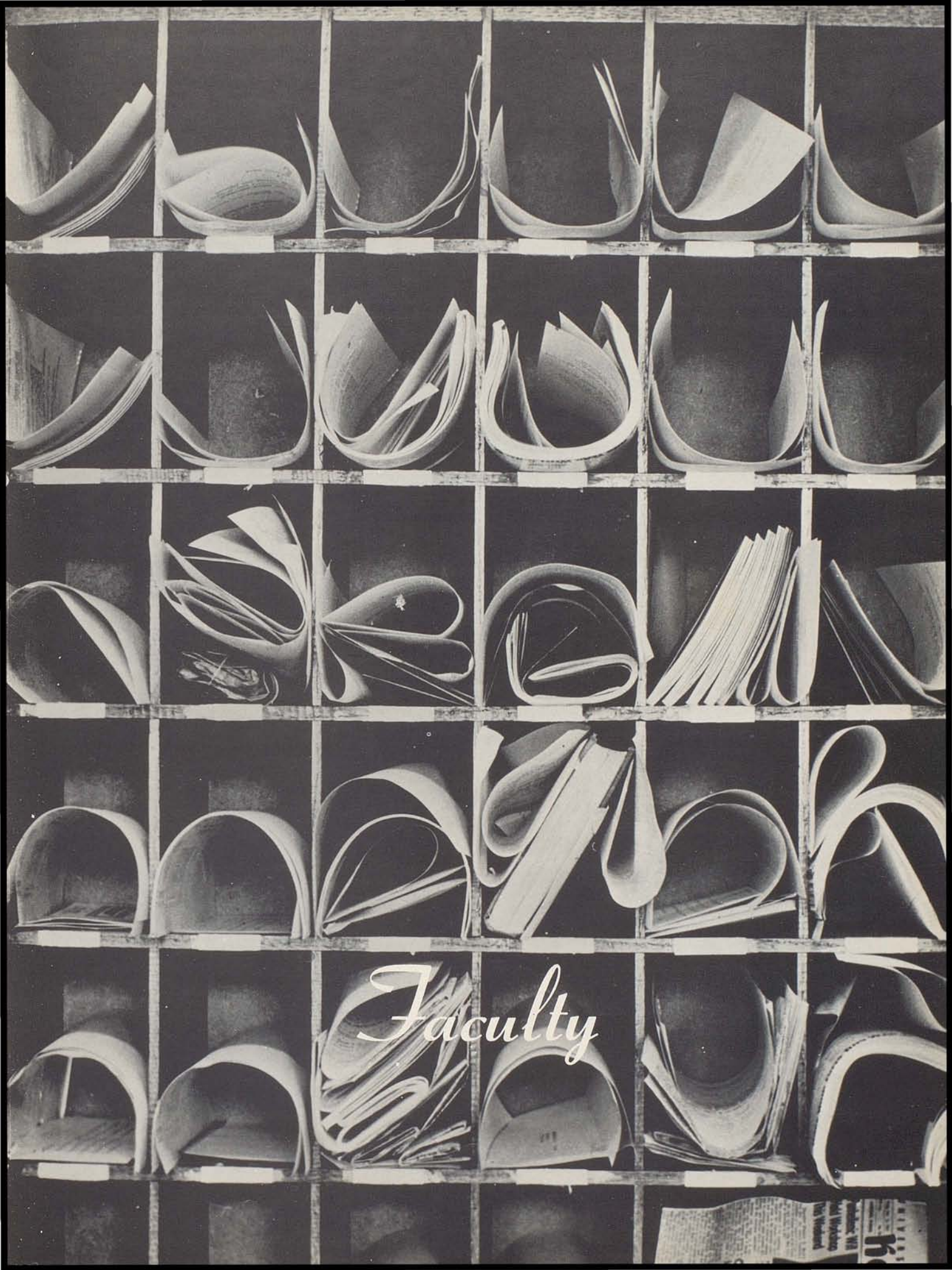


WILLIAM F. RUSSELL
Superintendent
A. B. Centre College
M. A. University of Kentucky

Administration



DONALD FAIR
Principal
A. B. Morehead State College
M. A. Morehead State College



Faculty



GILBERT LAVIN
A. B. University of Kentucky
M. A. University of Michigan
Latin



BETSY BROOKS WOODFORD
A. B. University of Kentucky
Romance Languages



RAYMOND KRINGS
A. B. Morehead College
Commercial



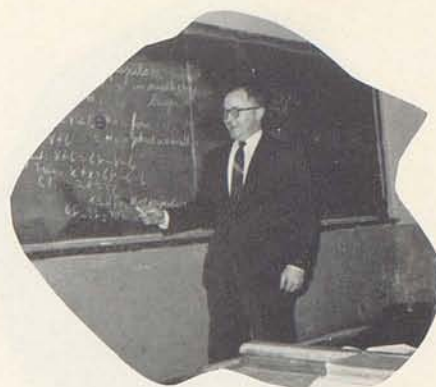
ZERELDA NOLAND
A. B. University of Kentucky
M. A. Columbia University
English



MARY ELEANOR ISGRIG
A. B. University of Kentucky
Science



MRS. JAMES HANSON
A. B. Western State College
Social Science



EMMETT R. DAVIS, JR.
B. S. University of Kentucky
M. A. University of Kentucky
Mathematics, Social Science



LOUISE CLAY
A. B. University of Illinois
Librarian



MRS. DUKE YOUNG
A. B. Randolph Macon College
Mathematics



MRS. DAN PEED
B. S. University of Kentucky
Home Economics



MARION MITCHELL
A. B. Randolph Macon College
M. A. Columbia University
Geography



AGNES PURNELL
A. B. University of Kentucky
Mathematics



HELEN HUNTER
A. B. University of Kentucky
M. B. Columbia University
History



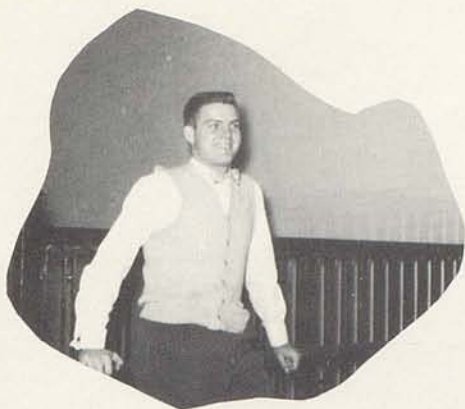
ALICE McCLINTOCK
A. B. Georgetown College
M. A. University of Michigan
Latin



MARY ALMA PURCELL
A. B. Western State College
English



KATHLEEN LOVELL
A. B. University of Kentucky
English



FRANK BLOSS
A. B. Morehead College
Science



TERPSYTHEA CHALKAS
B. M. University of Kentucky
Music



THOMAS A. SIWICKI
B. M. Ed. De Paul University
Music

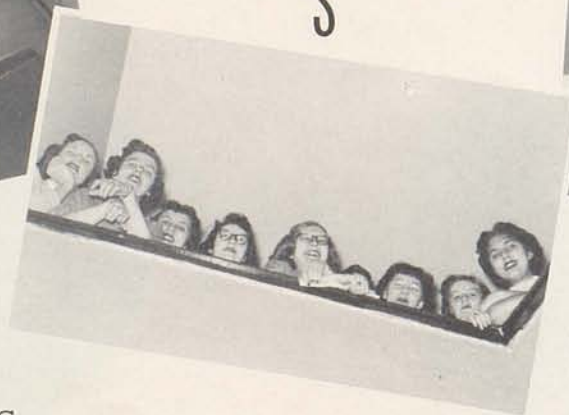
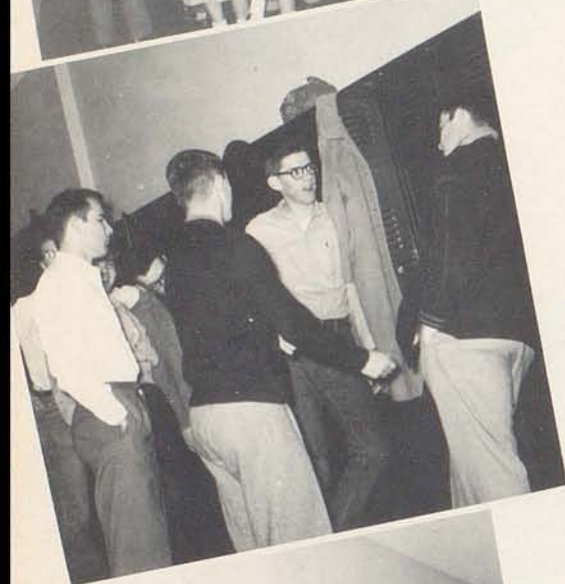


RALPH PATTERSON
A. B. Eastern State College
Physical Education



MRS. FRANK DALBY
Secretary

B E T W E E N C L A S S E S



WAGONER'S MARKET

GRINNELL DRY CLEANING

WOODFORD SPEARS & SONS R. L. FILER AUTO BODY SHOP

STRICKLER FURNITURE CO. LIMESTONE GAS COMPANY

GUDGELL APPLIANCE COMPANY

CITY OF PARIS, KENTUCKY

DR. & MRS. S.M. RICKMAN

BEN COHEN SHOE STORE

CHAS. P. COOK CO.

DAUGHERTY PAINT & SUPPLY



GRADUATES

SCHOOL DAZE

One day I rushed away from school
Went home so very mad,
My day at school had seemed all wrong.
I'll tell you why I'm sad.

Twelve long years I'd gone to school
I'd struggled night and day,
I felt so sorry for myself--cause
I could not get away.

It seemed I spent all hours in vain
Never to break a rule,
And study-study-study
To make those grades in school.

I thought my life was useless,
I thought my life was spent,
I threw myself upon my bed,
My body seemed quite rent.

Amid the sobs and tears of woe
I fell into a dream,
This is why I've changed my mind;
I'll tell you what I've seen.

* * *

I saw myself in teacher's place
Facing the angry mob;
Surprisingly enough,
It was she who gave a sob.

It was she who worked so hard,
And she who took the blame,
It was she who had the heartaches,
My face turned red in shame.

And then the tide was turned again
I saw myself ten years from now,
The parent of little children,
A wrinkle on my brow.

They'd be the ones come crying,
About their life in school,
And I'd take them on my knee,
And quote the golden rule.

I'd be the one to say to them,
"Some day you'll wish you had
Studied more and enjoyed young life.
Someday you'll be so glad



You studied. Now that I'm older
I've put those books to use.
I've taken the knowledge that I learned
And often o'er it muse.

I've learned that no matter how old you
are,
No matter what your health,
No mind what position in life,
No matter what your wealth,

You'll always find a place for school
In some form of learnin'
You're never too old to learn a little
Whether sellin' cars or churnin'.

And all those years spent in school,
And all those tears you shed,
And typing, history, Latin and math
And all those books you read

Will come in mighty handy
When you're rearing up your tots,
When you're building bridges, painting
houses,
Or even sailing yachts.

Learning won't kill anybody,
No matter how it pains,
You'll be glad you went to school
When you're tottering on your canes."

* * *

Suddenly my dream was o'er,
I jumped up from my bed
"I'm glad I've spent twelve years in
school
I'm glad, I'm glad," I said.

And now you see why I have changed,
I hope you understand,
With memories and diplomas
On the threshold of life we stand."

SYLVIA STRICKLER





OFFICERS

President Gayle Rees
 Vice-President Elise Hill
 Secretary Sue Watlington
 Treasurer Marjorie Elvove

ANNA JONES

She looks on life with quiet eyes;
 She never fusses, fumes or sighs.
 Latin Club 2; Commercial Club 3, 4.

VIRGIL ARNOLD

No, no, Virgil--don't fall out!
 Or Miss Noland will start to shout!
 Senior Play.

DOROTHY KEAL WOOSLEY

Henry and Dorothy are full of joy
 Now that they have a baby boy.
 Latin Club 2; Home Ec Club 2, 3, 4; Choir 2, 3.

SHIRLEY EARLYWINE

Okay boys, we know it's tough
 But Shirley's name's no longer
 Clough.
 Home Ec Club 2, 3; Tri-Hi-Y 2;
 Annual Staff 4.





SUE WATLINGTON

Sweet, angelic, perfect is she.

DAR, speech, as nice as she can be.

Latin Club 2; Romance Language Club 3, 4; Beta Club 3, 4; Tri-Hi-Y 2, 3; Speech Club 3, 4; Class Officer 4; Glee Club 2, 3, 4; Choir 4; Commercial Club 3; Girls' State 3; World Affairs Institute Delegate 4; N.F.L. 4; DAR Award 4; Annual Staff 4; Service Club 4.



PAUL SANDERS

Paul, better known as "Squirrel,"

Keeps the Seniors in a whirl.

Hi-Y 2, 3; Basketball 2; Football 3; Manager 4; Annual Staff 4; Romance Language Club 3; Commercial Club 3, 4.

NANCY CLAYTON

Works like mad, so does our Nancy.

Besides, she really suits "Squirrel's" fancy.

Latin Club 2; Tri-Hi-Y 2, 3; Commercial Club 3, 4; Annual Staff 4.

DONNIE WELLS

Among the "cats," he's foremost named.

What we lost, the Army gained.

Basketball 2; Football 2; PTA Carnival King Candidate 3.

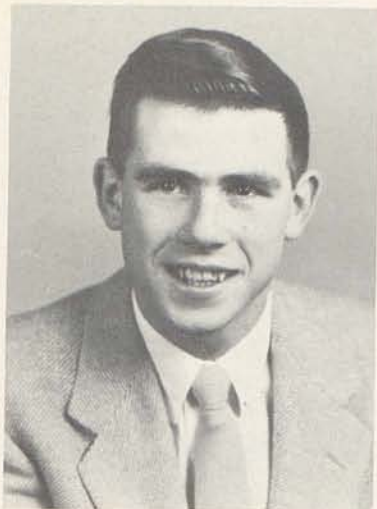
DORIS ROBERTSON

Doris went away last year

Our beauty queen is back with cheer.

Latin Club 2; Romance Language Club 3, 4; Tri-Hi-Y 2; Speech Club 2; Commercial Club 4; Glee Club 2; Chapel Choir 2, 4; Small Ensemble 2; Girls' Trio 4; Annual Staff 4; "Parisianaires" 4.





DELBERT SMITH

Delbert left for MMI,
Now he's back at Paris High.
Baseball 2, 3; Commercial Club 2, 4; Basketball 2; Hi-Y 4;
Spanish Club 3.

BARBARA WILLIAMS

From Fostoria Barbara came,
We welcomed her into our game.
Tri-Hi-Y 4; Speech Club 4; Commercial Club 4; Omicron
Lambda 2, 3; Y-Teens 2, 3; Journalism 2, 3; Quill and Scroll
3, 4; Band 2, 3; Orchestra 2, 3; Chorus 2, 3; Glee Club 2;
Annual Staff (Editor) 4; Service Club 4.



FAYE HUMPHRIES

Faye is always laughing and gay,
You can never find her any other way.
Glee Club 2, 3; Home Ec. Club 2, 4; Commercial Club 3, 4.

MARION JOHNSON

Marion is our quiet boy!
Baseball is his pride and joy.
Baseball 2, 4.

SUE DEL CAMPBELL

Susie's lucky, she's got a ring,
What's more, her Eddie's quite the thing.
Orange and Black Program 3; Latin Club 2; Beta Club 3, 4;
Glee Club 2, 3, 4; (Accompanist) Chapel Choir 2, 3, 4; Band
2, 3, 4 (Officer 2, 3, 4); Trio 3, 4; "Parisianaires" 4; Annual
Staff 4; Service Club 4.





BRENT CLAY

Oho! Brent's been out on another date!

Now which girl do you rate?

Class Officer 2; Latin Club 2; Football 2, 3, 4; Basketball 2, 3, 4; Baseball 3, 4.



YVONNE FISHBACK

Now, now Yvonne, don't look so blue,

You don't know, it may not be true.

Latin Club 2; Romance Language Club 3, 4; Glee Club 2, 3, 4; Commercial Club 4; Speech Club 2.

BETTY MARSHALL

Sweet and cute and hard to beat,

She rocks Cooper off his feet.

Latin Club 2; Tri-Hi-Y 2, 4; Commercial Club 3, 4; Annual Staff 4.

JEANETTE EWALT

Asphalt's the gal who types like mad.

With both her B's she's not doin' bad.

Beta Club 4; Latin Club 2; Tri-Hi-Y 4; Speech Club 3, 4; Commercial Club 3, 4; Class Officer 3; Parisian Circle 4; Glee Club 2; Chapel Choir 2, 3, 4; Annual Staff 4; Service Club 4.



SYLVIA STRICKLER

First here, then there, busy as a bee.

Her Senior year rather "punchy" was she.

Orange and Black; Beta Club 3, 4; Latin Club 2; Romance Language Club 3, 4; Speech Club 2, 3, 4; (President 4) NFL 3, 4; Debating Team 4; Commercial Club 3, 4; Girls' State 3; World Affairs Institute Delegate 4; Glee Club 2, 3; Chapel Choir 2, 3, 4; "Parisianaires" 4; Girls' Trio 2, 3, 4; Girls' Sextet 3; Octet 3; Drum Major 2, 3, 4; Annual Staff 4; Service Club 4.



MAREESE DOWNING

Many a boy would walk a mile
Just to see that Reesie smile.

Latin Club 2 (Officer 2); Service Club 4; Home Ec. Club
2, 3.

CHARLES LEEDS

The girls turn to look as he walks by;
"My, how handsome," they all sigh.

Hi-Y 2, 3, 4; Choir 2, 3, 4; Commercial Club 3; Annual Staff
4; Football 4.



WANDA HUGHES

She's got a laugh that none can beat,
That's what swept Leroy off his feet.

Commercial Club 3, 4; Home Ec. Club 4; Pep Club 2; Hobby
Club 2; Glee Club 2, 3.

STONER PARSONS

Into his car the girls he lures,
He's a Romeo, that's for sure.

PEGGY HORTON

Voice so soft, a Hershey bar,
Then that's Peggy up to par.

Latin Club 2; Tri-Hi-Y 4; Chapel Choir 2, 3, 4; Band 2, 3,
4; Annual Staff 4.





BILLY BOB McINTIRE

Billy Bob is quite a chap,

He seldom misses his afternoon nap.

Golf 2; Basketball 2, 3; Commercial Club 3, 4; Hi-Y 4.



JO ANN FUGATE

Outside of Debate and the Senior Play,

Clothes and boys are her main stay.

Cheerleader 2, 3, 4; Speech Club 3, 4 (Officer 4); N. F. L. 4; Debate 4; Parisian Circle 3, 4; Romance Language Club 3, 4; Beta Club 3, 4 (Officer 4); Latin Club 2; Glee Club 2, 3; Annual Staff 4; Service Club 4; Orange and Black Program 3; Commercial Club 3.

MARY BOOTH

Here's a gal who's just real smart,

I bet she's stolen Henry's heart.

Parisian Circle 2, 3, 4; Latin Club 2; Glee Club 2, 3; Home Ec. Club 2; Beta Club 3, 4; Commercial Club 3, 4; Service Club 4; Girls State 3.



MARY SUE SEE

Such beautiful hair has our Mary Sue,

Miller seems to think this gal will do!

Tri-Hi-Y 2, 3, 4 (Officer 4); Beta Club 2, 3, 4; Glee Club 2, 3, 4; Choir 3, 4; Speech Club 2; Service Club 4; "Parisianaires" 4; Pep Club (Middletown) 3 (Officer); Music Club (Middletown) 2, 3.

DAN WALKER

From the great "Texas" Danny came.

Since then the girls just haven't been the same.

Football 4; Annual Staff 4; Service Club 4; Hi-Y (Officer 4); Chapel Choir 4; "Parisianaires" 4; Spanish Club 4; Senior Play.



BETTY GARRISON

A better girl you'll never see.

In June, Roy's blushing bride she'll be.

Glee Club 2; Tri-Hi-Y 2; Home Ec. Club 2, 4; Latin Club 2.

WILMA ROGERS

Another engaged girl in our class.

Lucky boy who gets that lass!

Romance Language Club 3, 4; Latin Club 2; Tri-Hi-Y 2, 4;
Annual Staff 4; Commercial Club 3.

BOBBY TOOHEY

All five foot five a ball of fire,

Of the Syndicate and basketball he'll never tire.

Latin Club 2; Hi-Y 3, 4; Football 2; Basketball 2, 3, 4;
Baseball 2, 3, 4; Annual Staff 4.



NANCY HARNEY

Nancy Alice, a blond bombshell,

With Billy around she rings the bell.

Class Officer 2; Orange and Black Program 3; Beta Club
3, 4 (Officer 4); Home Ec. Club 2; Tri-Hi-Y 2, 3 (Officer
2); Parisian Circle 3, 4; Annual Staff 4; Service Club 4;
Latin Club 2; Speech Club 4; Commercial Club 3, 4.

BARBARA JONES WELLS

Barbara's the third of our married band;

Now she's got Walter close at hand.

Girls' Glee Club 2, 3; Romance Language Club 3; Tri-Hi-Y
3; Annual Staff 4; Commercial Club 3, 4.





MARY MARGARET HOLBROOK

As sweet a lady as you'll ever see.

La belle mademoiselle, mais oui.

Beta Club 3, 4; Tri-Hi-Y 2, 3; Home Ec. Club 2; Romance Language Club 3, 4; Parisian Circle 4; Glee Club 2, 3, 4; Service Club 4.



JIMMY WILLS

Of Kroger's he keeps us on the beam,

Ask him to sing and he'll just gleam.

Football 2, 3; Baseball 2, 3, 4; Chapel Choir 2, 3, 4; French-Spanish Club 3; Hi-Y 4; "Parisianaires" 4; Small Ensemble 2, 3; Commercial Club 3, 4.

LUCY WORICK

Lucy never lacks for dates,

With Jimmy Banta she really rates.

Latin Club 2; Tri-Hi-Y 2, 3, 4; Annual Staff 4; Girls' Glee Club 2, 3, 4; Majorette 3, 4; Commercial Club 3.



MARJORIE ELVOVE

Bubbling over with personality,

She's got a figure that's reality.

Choir 2, 3, 4; Girls' Glee Club 2, 3, 4; Tri-Hi-Y 2, 3; Speech Club 3; Trio 4; "Parisianaires" 4; Latin Club 2; Romance Language Club 2; Service Club 4; Annual Staff 4; Accompanist for Rallies 2, 3, 4; Class Officer 4.

JANICE JACKSON

Leading those cheers she's on her toes;

Poor old Janice with all her beaux.

Latin Club 2; Tri-Hi-Y 4; Speech Club 3, 4; Cheerleader 2, 3, 4; Girls' Glee Club 2, 3, 4; Chapel Choir 4; Annual Staff 4.



JOYCE LOWRY

Band sponsor and Valentine Queen;

Joyce and Nelson are a steady team.

Class Officer 2; Orange and Black Program 3; Latin Club 2; Romance Language Club 3, 4; Beta Club 3, 4; Tri-Hi-Y 2, 3, 4 (Officer 3, 4); Glee Club 2, 3, 4; Chapel Choir 4; Band Sponsor 4; "Miss Valentine" 4; Annual Staff 4; Service Club 4.

GAYLE REES

Basketball, baseball, football, too,

Class President, a brain, and good looks.... true.

Class President 3, 4; Orange and Black Program 3; Beta Club 3, 4; Latin Club 2; Romance Language Club 3; Speech Club 3; Hi-Y 3, 4 (Officer 4); Chapel Choir 2, 3, 4 (Officer 4); "Parisianaires" 4; Small Ensemble 2, 3; Annual Staff (Assistant Editor) 4; Service Club 4; Baseball and Basketball 2, 3, 4; Parisian Circle 2, 3, 4; Football 4.

NELLIE WHALEN

If a giggle or laugh you hear

It's a cinch that Nellie's near.

Class Officer 3; Orange and Black Program 3; Beta Club 3, 4; Latin Club 2; Romance Club 3, 4; Commercial Club 3, 4; Tri-Hi-Y 2, 3, 4 (Officer 3, 4); Speech Club 2, 3, 4; N. F. L. 3, 4; Glee Club 2, 3, 4; Chapel Choir 4 (Officer); Annual Staff 4.

ELISE HILL

Tall and stately, smarter than most,

Of Harry B. she likes to boast.

Class Officer 3, 4; Orange and Black Program 3; Beta Club 2; Tri-Hi-Y 2 (Officer); Speech Club 3; Glee Club 2, 4; Chapel Choir 2, 3, 4 (Officer 4); Mixed Quartette 2; Girls' Trio 2, 4; Solo 2, 4; "Parisianaires" 4; Service Club 4; Commercial Club 3, 4; Annual Staff 4 (Editor).

KATIE RISON

Just ask around and you'll find out

What that Katie is all about.

Romance Language Club 2, 4; Tri-Hi-Y 4; Annual Staff 4; Latin Club 2.





"Hot Time in the Old Town Tonight!"



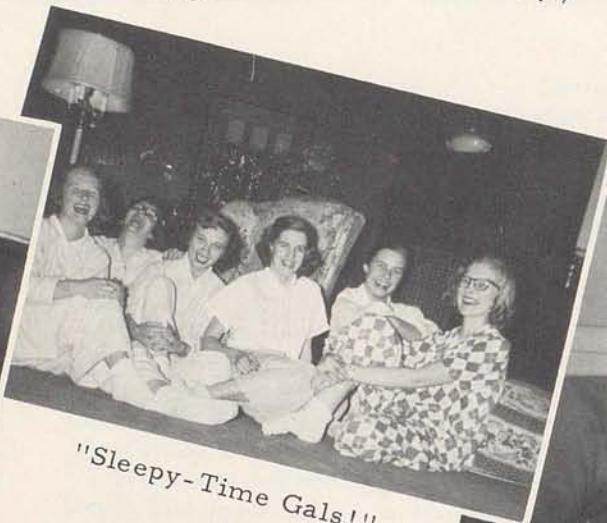
"Strangers in Paradise?"



"The Thing?!"



"Changing Partners!"



"Sleepy-Time Gals!"



"Strange Things Are Happening!"



"Sylvia"



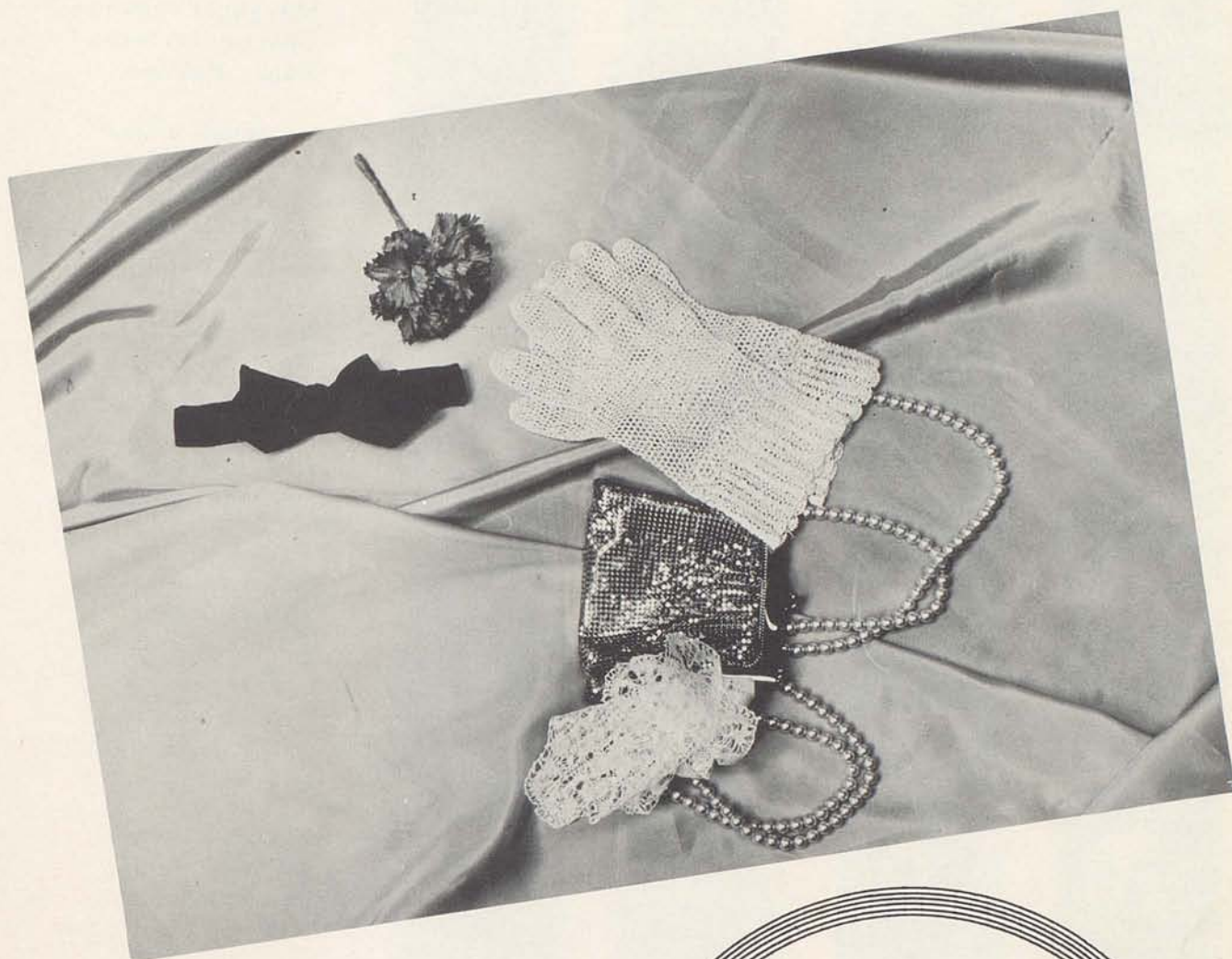
Compliments Of
FORD & CO.

WORICK BROS.
Dodge Plymouth

Compliments of
THE CITY CLUB

Compliments of
THE LIONS CLUB





Juniors



Bill Adams
Margaret Anderson
Charlie Atkinson
Nancy Ballard



Donald Beheler
Tommy Belt
Betty Brophy
Rosemary Butler



Billy Collier
Sandra Connell
Bobby Dotson
Patricia Dotson



Marilyn Elvove
Donald Farris
Vol Ferguson
Tommy Fullington



President . Jimmy Greer
Vice President
Patty Dotson
Secretary . Nancy Ballard
Treasurer . Dabney Johnson

Juniors

Juniors

Phyllis Gilvin
Jimmy Greer
Betty Hall
Billye Jo Harney



Jean Harney
Bonnie Hause
Marilyn Hurst
Dabney Johnson



Shirley Jones
Larry Jordan
Alice Langfels
Lynn Luallen



Jackie Maye
Betty Maxwell
Ava McCann
Nancy McConnell



Carol Merringer
Bertha Myers
Linda Nolan
Roy Parker



Juniors



Billy Purcell
Jerry Robin
Lynn Santen
Janet Shout



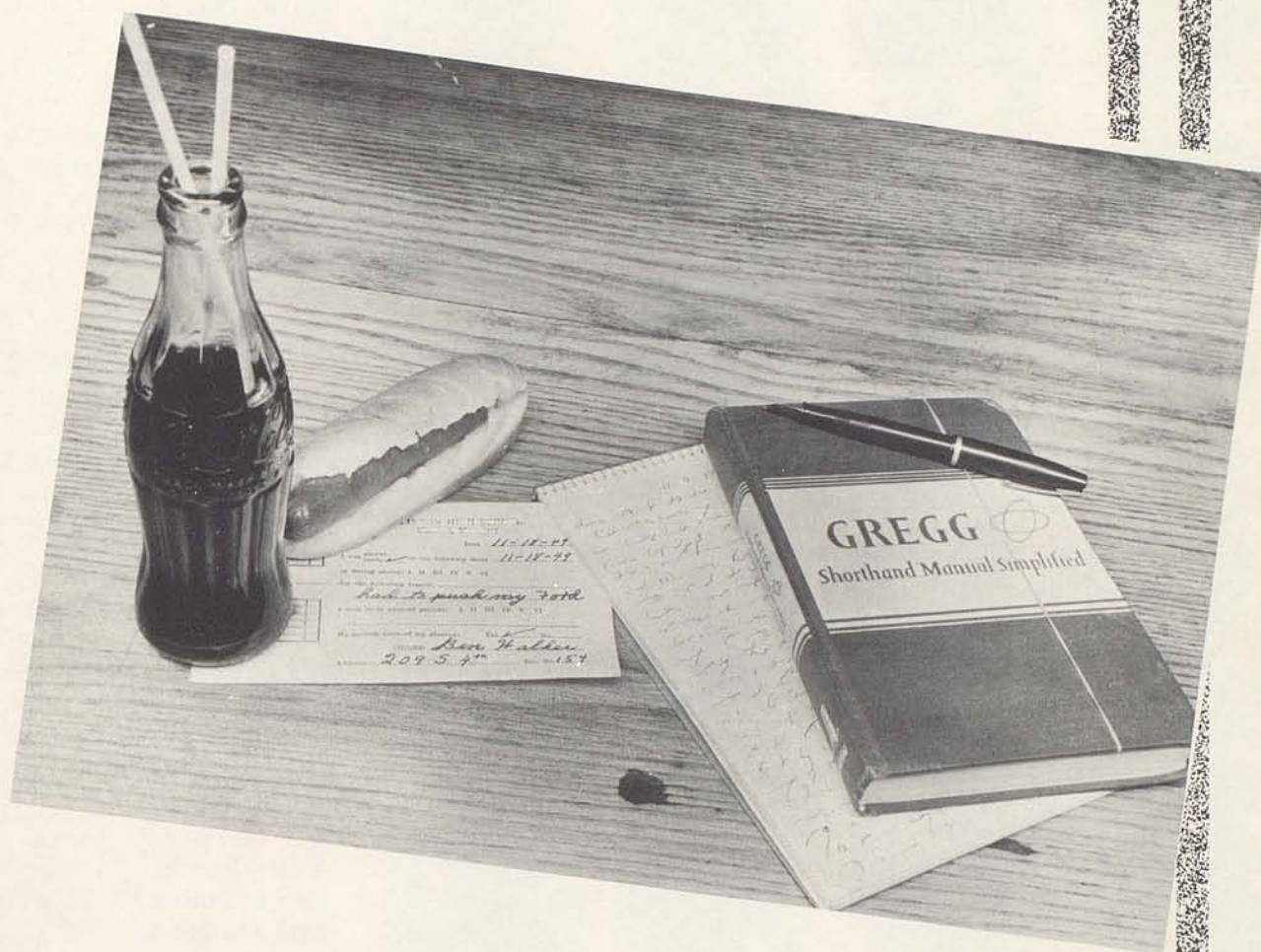
Rose Carol Shumate
Patty Smith
Dennis Spivey
Shirley Stanforth



Bobby Taylor
Jane Turpin
Johnny Walker
Junior Warren



Charlotte Waugh
Joyce White
Alice Wigglesworth
Nancy Wilson



Sophomores



Anne Barnett
Betty Davis
Susan Day
Betsy Doyle



Sue Ewalt
Jane Florence
Patsy Flynn
Kay George



Mary Haynes
Rena Hinkson
Sara Hyden
Doris Jones



Laura Judy
Patty Leeds
Joe Manning
Lon McCord



President . Marium Thomas
Vice President. Anne Barnett
Secretary . . . Sue Ewalt
Treasurer . Jackie Riggert

Sophomores

Sophomores

Priscilla McDuffy
Carolyn Moore
Ann Morris
Larry Myers



Ralph Parsons
Billy Pitts
Ted Rankin
Bobby Ricci



Jackie Riggert
Emma Jean Shelburne
Lillard Shelley
Larry Shriver



Bobby Slack
Johnny Stuart
June Taylor
Marium Thomas



Anne Thompson
Jane Toohey
Tommy Turpin
Belle Brent Ward





Best Wishes
from
HANSLEY MILLS
A Good Place To Work



WILSON BROS.
Appliances - Hardware - Implements
Phone 164
Paris, Kentucky



BRENT & CO.
Field Seeds - Wool - Grain
Phone 14
25 E. Main



Sports





FIRST ROW: Danny Jefferson, Johnny Stuart, Larry Shriver, Charles Atkinson, Billy Ferguson, Vol Ferguson, Charles Leeds, Gayle Rees, Brent Clay. SECOND ROW: Coach Patterson, Butch Withrow, Floyd Withrow, Larry Ransdel, Tommy Fullington, Danny Walker, Donald Beheler, Lafayette Gant, Billy Morris, George Wigglesworth, Kent Gaitskill, Coach Bloss. THIRD ROW: Johnny Walker.



COACHES

Frank Bloss and Ralph Patterson

FOOTBALL SCORES

PARIS		OPPONENTS	
Paris	0	Carlisle	13
Paris	6	Georgetown	55
Paris	6	Cynthiana	6
Paris	6	Irvine	49
Paris	27	KSD	55
Paris	0	Elkorn	59
Paris	0	Winchester	46
Paris	0	Shelbyville	38

Season's Record: Won 0
Lost 7
Tied 1





Danny Jefferson



Tommy Fullington



Donald Beheler



FOOTBALL

Though our football team of 1953 had a scarcity in the win column, they were Number One in effort, determination, and love of the game. With the new and incoming talent we have for the coming years, we are sure that opposing schools will dread the name of Paris Greyhounds on the central Kentucky gridirons in the future. (Here are some of the boys that will be carrying the load for the Greyhounds of 1954.) With the effort and endurance of the players, coaches, and fans, we are awaiting another chapter of glory for the annals of Paris High football.



Charles Atkinson



Larry Shriver

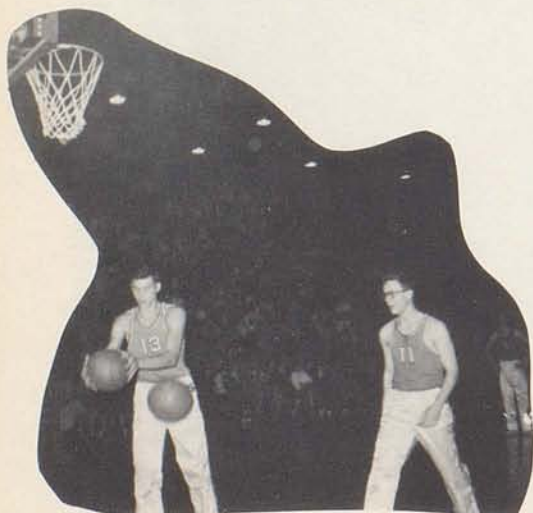


Johnny Stuart

Basketball Team



SEATED: Ralph Patterson, Coach; Billy Purcell; Donald Beheler; Brent Clay; George Wigglesworth; Johnny Stuart; Bobby Toohey; Frank Bloss, Assistant Coach. STANDING: Paul Sanders, Manager; Gayle Rees; Ronnie Myers; Tommy Belt; Vol Ferguson; Larry Jordan; Tommy McMahan; Bobby Jo Slack, Assistant Manager.



Basketball Scores

<u>TEAM</u>	<u>WE</u>	<u>THEY</u>	<u>TEAM</u>	<u>WE</u>	<u>THEY</u>
Carlisle	69	58	Cynthiana	82	35
N. Middletown	49	43	Mt. Sterling	69	43
Harrison Co.	39	45	Manual	57	69
Winchester	73	37	Georgetown	44	47
MMI	54	50	Clark Co.	40	41
Maysville	48	46			
Cynthiana	47	29			
Bourbon Vo.	44	50	DISTRICT TOURNAMENT		
Georgetown	38	47	Paris 59	MMI	45
Harrison Co.	64	54	Paris 41	Bourbon Vo.	55
Clark Co.	53	44			
Mt. Sterling	76	40	REGIONAL TOURNAMENT		
Nicholas Co.	51	48	Paris 53	Maysville	51
Bracken Co.	55	63	Paris 45	Bourbon Vo.	59
Bourbon Vo.	55	60			
Winchester	61	50	SEASON'S RECORD		
			Won 13	Lost 11	
CKC TOURNAMENT					
Shelbyville	61	55			
Danville	51	61			

The Greyhounds of the fifty-three and fifty-four season showed that Paris is once again rising to become one of the basketball strongholds of Central Kentucky. The Greyhounds will lose only three players via the graduation route.

The team loses Gayle Rees, one of the most valuable players of last year's team. His fine hustling, and excellent rebounding and defensive play brought Paris to the top in many of our games. He had the honor of being team captain of a fine group of boys.

Bobby Toohey, five foot eight inch guard, will be lost also. His hustle and shooting ability will be greatly missed by the squad. His excellent long shot pulled Paris through many a tough game.

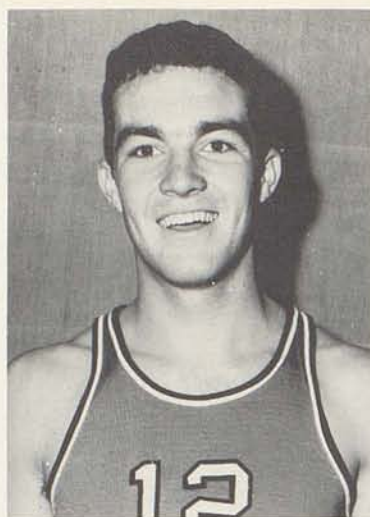
Brent Clay, a rugged and ready forward, will also be missed. A top reserve, his ability in rebounding and scoring gave Paris a strong assurance from the bench. He helped us considerably in many a Paris win.

Paul Sanders, our devoted and hard-working manager, will also be missed by the team. "Squirrel," besides being a good manager, was a great morale builder with his funny antics and wisecracks.

With a lot of hard work and determination to win, the Greyhounds of the coming season will have one of the strongest Paris teams in recent years. The people of Paris and students of PHS expect to see these boys in the Dribble Derby of 1955 at Lexington.



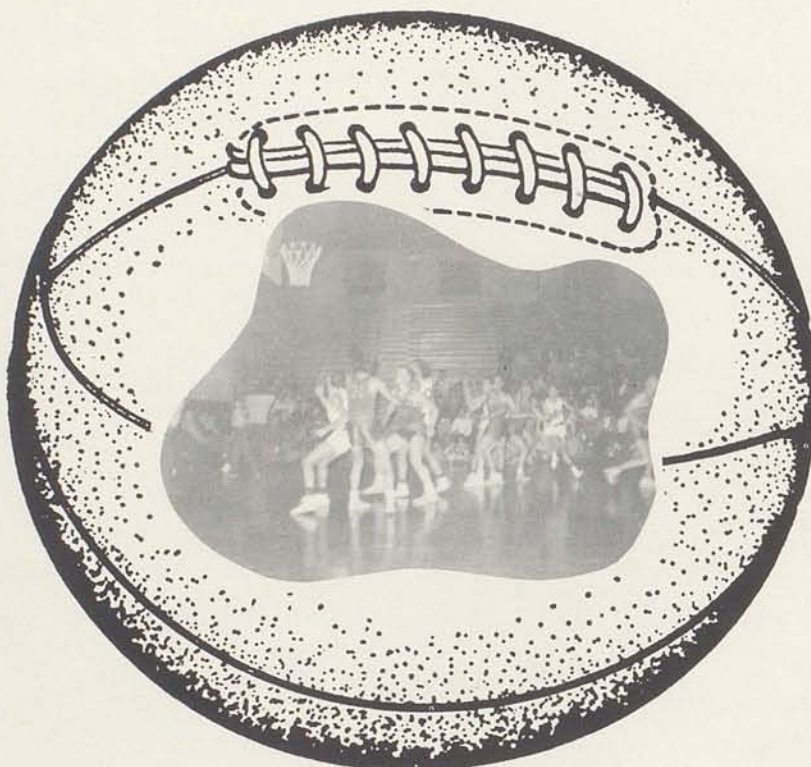
Tommy McMahan



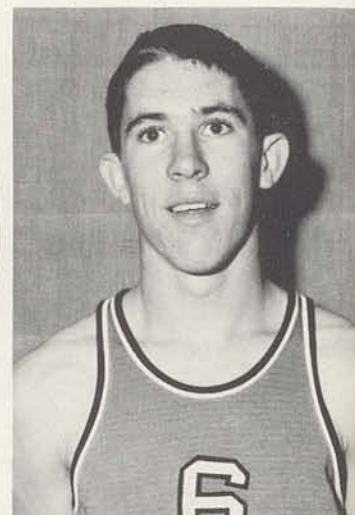
Gayle Rees



Billy Purcell

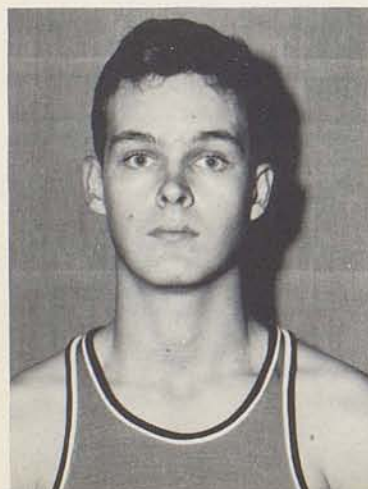


Tommy Belt



Bobby Toohey

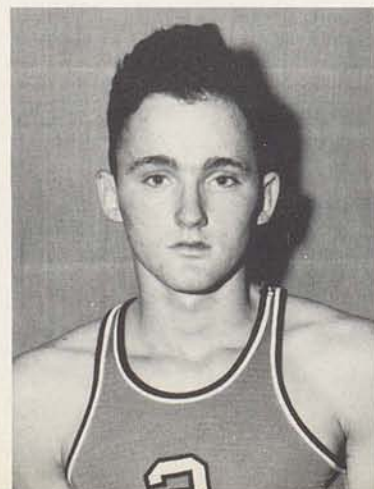
Brent Clay



Vol Ferguson



George Wigglesworth



Baseball Team



SITTING: Charlie Atkinson, Marion Johnson, Jimmy Wills, Edwin Conyers, George Pennington, and Bobby Toohey. STANDING: Jackie Shout, Manager; Brent Clay, Tommy Watson, Ronnie Myers, Larry Jordan, Gayle Rees, Tommy McMahan, Billy Purcell, and Bennie Fugate, Manager.

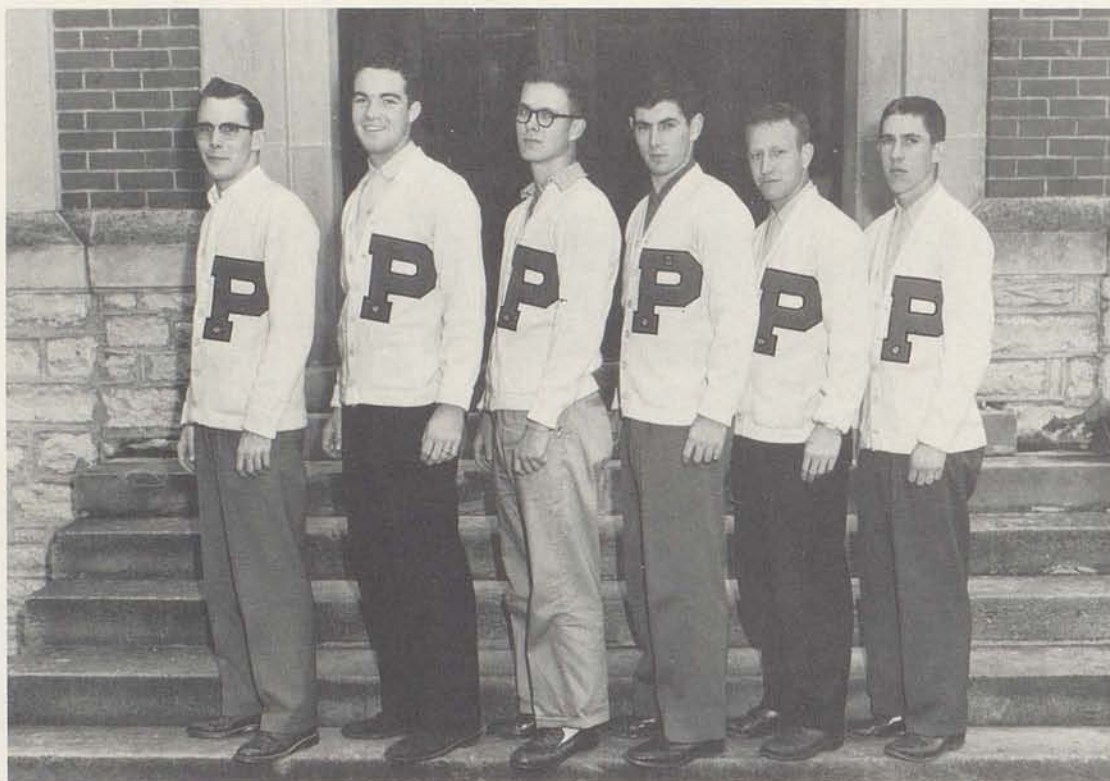
SEASON'S RECORD

OPPONENT	WE	THEY
Cynthiana	2	5
M. M. I.	3	4
Carlisle	4	2
Cynthiana	9	2
M. M. I.	5	8
Sharpsburg	3	7

Won 2; Lost 4.



Senior Athletes of 1954



FROM LEFT TO RIGHT: Dan Walker, Gayle Rees, Brent Clay, Paul Sanders, Nelson Sadler, and Bobby Toohey.

SPORTS RECORD OF SENIOR BOYS

BRENT CLAY
Football 2, 3, 4
Basketball 2, 3, 4
Baseball 3, 4
Rotary Athletic Cup,
Football

GAYLE REES
Football 4
Basketball 2, 3, 4
Baseball 2, 3, 4
Rotary Athletic Cup,
Basketball

DAN WALKER
Football 4

BOBBY TOOHEY
Football 2
Basketball 2, 3, 4
Baseball 2, 3, 4

NELSON SADLER
Football 2, 4
Basketball 2, 3
Golf 2

JIMMY WILLS
Football 2, 3
Baseball 2, 3, 4



Janice

Cheerleaders



Jo Ann



Rosemary



Sophomores: Jane Florence and Jane Toohey
 Juniors: Patty Dotson and Rosemary Butler
 Seniors: Jo Ann Fugate and Janice Jackson



Pat



Jane



Jane Carol



"Let's Build Together"
SHEELER LUMBER CO.
 500 Phones 300

**THE NATIONAL BANK AND
 TRUST CO. OF PARIS**



BOURBON LUMBER CO.
 122 Phones 125
 Better Built Buildings

**BOURBON AGRICULTURAL
 BANK AND TRUST CO.**





ACTIVITIES

The Beta Club

OFFICERS

President . . . Jo Ann Fugate
 Vice-President . Sue Watlington
 Secretary . . . Nancy Harney
 Treasurer . . Sue Del Campbell

The Beta Club, under the sponsorship of Miss Gilbert Lavin, is a National Honorary Society, organized to encourage achievement, character, leadership, and a high scholastic standing, among high school students. The club is composed of Junior and Senior students who must maintain a 2.2 standing to remain in the club.



The Service Club

The Service Club is an honorary organization with its membership based on a person's leadership, character, and scholastic standing.

The purpose of this club is found in its name. The members are ready and willing to assist the faculty at any time. Membership is limited to Seniors who are chosen by the superintendent and principal, with the approval of the faculty.

Members are proud to wear the orange and black symbol which signifies that the administration places full confidence in their ability to carry out orders.



The Parisian Circle

The Parisian Circle is a club that stands for the principles of honor and high scholastic achievement. Senior members are: Mary Booth, Gayle Rees, Nancy Harney, Jo Ann Fugate, Mary Margaret Holbrook, and Jeanette Ewalt. Juniors: Dabney Johnson, Jimmy Greer, Bonnie Hause, Jean Harney. Sophomores: Ann Thompson, Jane Carol Florence.



Latin Club

OFFICERS

President . . . Rosemary Butler
 Vice-President . . . Tommy McMahan
 Secretary Patty Dotson
 Treasurer Marium Thomas
 Advisor Miss Gilbert Lavin



The Latin Club has been active during the entire school year with particular attention centered on the state-wide convention of Latin Clubs held on the University of Kentucky campus in March. Jean Harney took part in presenting a panel discussion before the morning session. This was later tape-recorded and broadcast from Lexington during Latin Week. Carol Merringer represented Paris on the Olympic Council, the policy-making body of the state convention.

Members are: Charles Atkinson, Rosemary Butler, Pat Dotson, Jimmy Greer, Jean Harney, Dabney Johnson, Tommy McMahan, Carol Merringer, Jerry Robin, Harry Archbold, Anne Barnett, Betsy Doyle, Laura Judy, Jackie Riggert, Emma Jean Shelburne, Lillard Shelley, Marium Thomas, Ann Thompson, Jane Toohey, Belle Brent Ward, Sue Ewalt, Jane Florence, Patsy Flynn, Sara Hyden, Carolyn Moore, Lonnie McCord, and Sharon Brown.

The second of the language clubs is the French and Spanish Club which meets every two weeks throughout the year. At the first of the year a program was held at which first year students were initiated into the club by second year members. Those in the club are: Margaret Anderson, Rosemary Butler, Tommy Fullington, Bettie Hall, Billye Jo Harney, Mary Alice Haynes, Carol Merringer, Rose Carol Shumate, Alfred Vickers, Danny Walker, Marjorie Elvove, Yvonne Fishback, Joyce Lowry, Katie Rison, Wilma Rogers, Sue Watlington, Nellie Whalen, Nancy Ballard, Marilyn Elvove, Betty Maxwell, Patty Smith, Anne Thompson, Charlotte Waugh, Joyce White, Sandra Connell, Jo Ann Fugate, Mary Margaret Holbrook, Jill Nolan, Doris Robertson, Lynn Santen, Sylvia Strickler, and Jane Turpin.

French - Spanish Club

OFFICERS

President Sue Watlington
 Vice-President Nellie Whalen
 Secretary-Treasurer Patty Smith
 Advisor
 Miss Betsy Brooks Woodford



Speech Club



OFFICERS

President	Sylvia Strickler
Vice-President	Sue Watlington
Secretary	Jo Ann Fugate
Advisor	Miss Zerelda Noland



The Speech Club emphasizes the importance and value of speech in everyday living. This year the club had its largest attendance in its history. Programs were of excellent quality and every member participated in their presentations. During the course of the year, four members of the club achieved honors in the National Forensic League. Sylvia Strickler and Jo Ann Fugate were awarded Degrees of Excellence by compiling over one hundred points in speech contests and debates. Jane Carol Florence and Ann Thompson received Degrees of Honor by amassing over fifty points in competition during the year. In addition to these four members of the National Forensic League, six other Paris students have gained the twenty points necessary for membership. They are: Sue Watlington, Nellie Whalen, Anne Barnett, Marium Thomas, Sue Ewalt, and Belle Brent Ward.

The debate team is composed entirely of first year debaters. Despite their inexperience, the three regular members and their two alternates compiled a creditable record, placing third in the National Forensic League tournament at Georgetown and winning a berth at the State Tournament. They entered the latter contest by placing second to Harrodsburg, last year's state debate winner, in the Regional Tournament at Richmond. Team members are: Jo Ann Fugate and Sylvia Strickler, Seniors; Ann Thompson, Jane Florence, and Marium Thomas, Sophomores.



NATIONAL FORENSIC LEAGUE MEMBERS

Sylvia Strickler, Sue Watlington, Belle Brent Ward, Jo Ann Fugate, Ann Thompson, Miss Zerelda Noland, Mr. William Russell, Miss Susan Hinkle, Nellie Whalen, Ann Barnett, Marium Thomas, and Sue Ewalt.
NOT PRESENT WAS Jane Carol Florence.

REGIONAL SPEECH CONTEST, RICHMOND

DIVISION	RATING
Extemporaneous, Sue Watlington	Superior
Oratory, Jo Ann Fugate.	Superior
Poetry, Sue Ewalt	Superior
Humorous monologue, Nellie Whalen	Excellent
Discussion, Ann Thompson	Excellent
Discussion, Sylvia Strickler	Excellent
Serious monologue, Ann Barnett.	Excellent
Play cutting, Jane Toohey	Excellent
Prose, Barbara Jones	Excellent
Oratory, Jane Florence.	Excellent
Poetry, Jill Nolan	Excellent
Prose, Belle Brent Ward	Excellent
Play cutting, Marium Thomas	Good
Radio speaking, Shirley Stanforth	Good
Radio speaking, Jean Harney	Good

JUNIOR HIGH

Prose, Betty Zapolsky	Superior
Prose, Morrow Richards	Superior
Poetry, Betty Hewitt Lair	Excellent
Poetry, Rebecca Gaitskill	Excellent

STATE SPEECH CONTEST, LEXINGTON

Extemporaneous, Sue Watlington.	Excellent
Humorous monologue, Nellie Whalen	Excellent
Poetry, Sue Ewalt	Good
Oratory, Jo Ann Fugate.	Good

JUNIOR HIGH

Prose, Bette Zapolsky	Superior
Prose, Morrow Richards	Superior

Tri-Hi-Y

OFFICERS

President	Nellie Whalen
Vice-President	Mary Sue See
Secretary	Joyce Lowry
Treasurer	Kay George
Chaplin	Ann Thompson
Advisor	Mrs. Duke Young

Tri-Hi-Y stands for all-round development of members--Spirit, Mind, and Body--and serves three main training agencies--home, church, and school. The purpose of the Tri-Hi-Y is to create, maintain, and extend throughout the home, school, and community, high standards of Christian character. The club is made up of forty-one members from the Sophomore, Junior, and Senior classes.

The Paris Hi-Y club has as its motto: clean speech, clean scholarship, clean living and clean athletics. Its membership consists of approximately fourteen boys from the Sophomore, Junior, and Senior classes.

Hi-Y

OFFICERS

President	Gayle Rees
Vice-President	Dan Walker
Secretary	Tommy McMahan
Treasurer	Nelson Sadler
Sergeant-at-Arms	Tommy Fullington
Advisor	Mr. Walter Safrit
Secretary, Bourbon County Y. M. C. A.	





Directed by Mr. Thomas Siwicki

Girls' Glee Club



Accompanist: Sue Del Campbell



Easter Program
April 18, 1954



OFFICERS

President Gayle Rees
Vice-President Elise Hill
Secretary-Treasurer Nellie Whalen ,

SOPRANOS:

Rosemary Butler
Janice Jackson
Joyce Lowry
Sue Del Campbell
Marjorie Elvove
Nellie Whalen
Carol Merringer
Lynn Santen
Jill Nolan
Emma Jean Shelburne
Jeanette Ewalt

ROSE CAROL SHUMATE

Elise Hill
Jane Turpin
Peggy Horton
Belle Brent Ward
Mary Sue See
Patty Leeds
Ann Thompson
Doris Robertson
Sue Watlington
Sara Hyden

TENORS:

Junior Warren
Jimmy Wills
Gayle Rees
Charles Leeds
Tommy McMahan

Directed by Mr. Thomas Siwicki

BASSES:

Tommy Fullington
Donald Beheler
Jerry Robin
Dan Walker
Johnny Walker
Dabney Johnson

SELECTED GIRL' CHORUS:

Margaret Sue Anderson
Lucy Worick
Mary Margaret Holbrook
Shirley Stanforth
Yvonne Fishback
Jean Harney
Ann Barnett
Alice Langfels
Joyce White
Nancy Ballard
Ava McCann

ALTOS:

Marilyn Elvove
Sylvia Strickler
Sue Ewalt



Accompanist, Pat Dotson



"PARISIANAIRES"
 SOPRANOS: Jill Nolan, Emma Jean Shelburne, Sue Del Campbell, Marjorie Elvove, Carol Merringer.
 ALTOS: Doris Robertson, Jane Turpin, Sylvia Strickler, Mary Sue See, Elise Hill.
 TENORS: Gayle Rees, Jimmy Wills, Tommy McMahan.
 BASSES: Dan Walker, Tommy Fullington, Jerry Robbin, Dabney Johnson.

REGIONAL VOCAL CONTEST, RICHMOND DIVISION

	RATING
Small Ensemble, "Parisianairres"	Superior
Junior Chorus, No. 1	Superior
Junior Chorus, No. 2	Excellent
Girls' Trio, No. 2	Excellent
Bass solo, Dan Walker	Excellent
Alto solo, Elise Hill.	Excellent
Girls' Trio, No. 1	Good
Soprano solo, Jill Nolan	Good

STATE VOCAL CONTEST, LEXINGTON

Chapel Choir (Mixed Chorus)	Superior
Small Ensemble, "Parisianairres"	Excellent



TRIO NO. 2

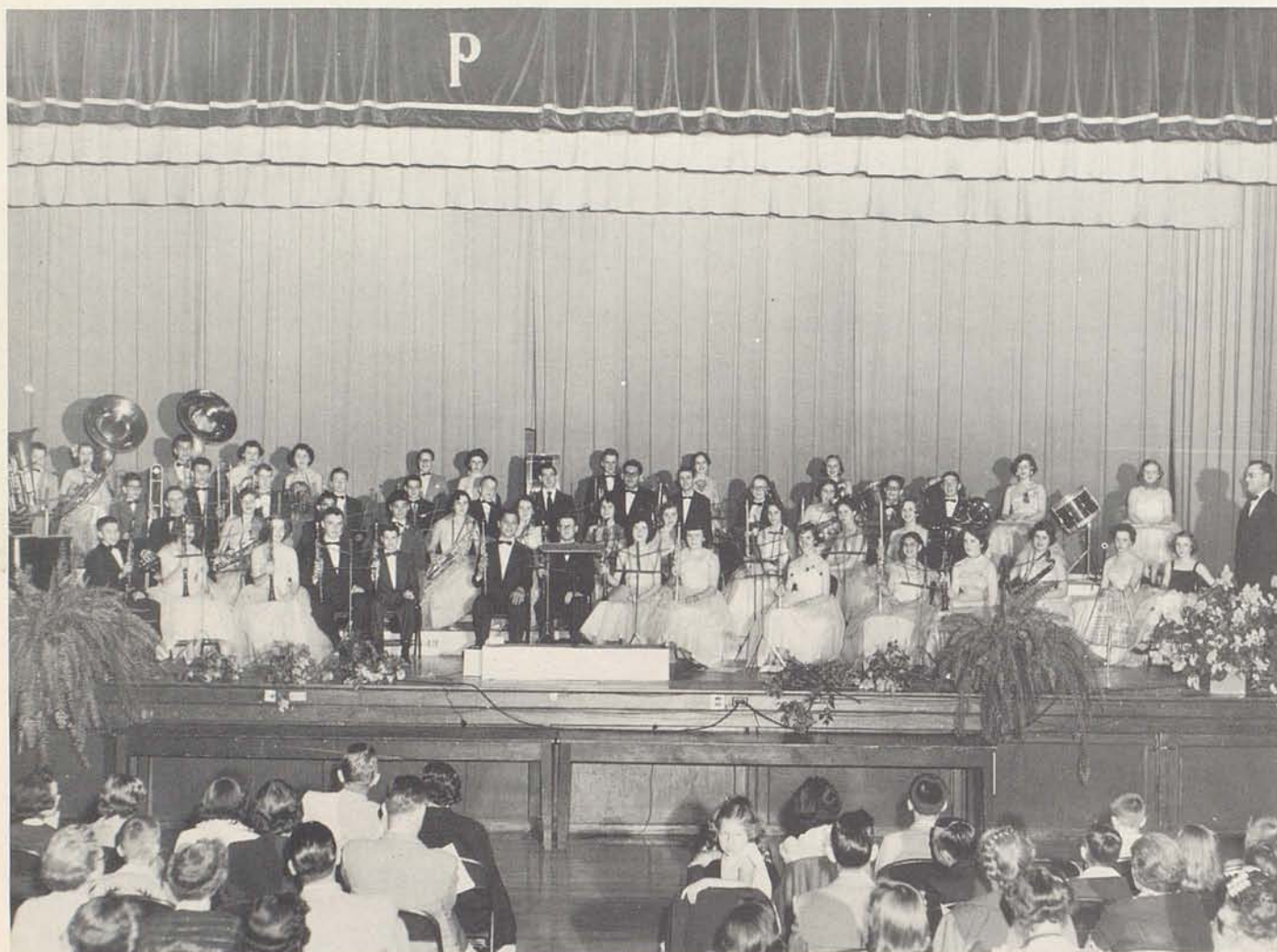
Carol Merringer, Sylvia Strickler, and Marjorie Elvove.



TRIO NO. 1

Sue Del Campbell, Doris Robertson, and Elise Hill.

The Band



OFFICERS

President Sue Campbell
 Vice President. . Tommy Fullington
 Secretary-Treasurer . Kay Collier
 Efficiency Managers. Dabney Johnson
 Jerry Robin
 Jill Nolan
 Jimmy Greer



MR. THOMAS SIWICKI
 Director



Ready
for
the
big
parade!

Band

KNEELING: Sylvia Strickler, Drum Majorette;
and Joyce Lowry, Band Sponsor. STANDING:
Shirley Stanforth, Barbara Jones, Lucy Worick,
Billye Jo Harney, Janet Shout, and Rose Carol
Shumate.



REGIONAL INSTRUMENTAL CONTEST, RICHMOND DIVISION

	RATING
Baritone, Tommy Fullington	Superior
Saxophone, Bobby Jo Slack	Superior
Brass Sextette	Superior
Sousaphone, Jane Turpin	Excellent

JUNIOR HIGH

Clarinet, Mary Jo Hyden	Superior
Piano, Mary Jo Hyden	Superior
Piano, Kay Collier	Superior
Piano, Joan Cooper	Excellent
French Horn, Kay Collier	Excellent
Clarinet Trio	Excellent
Saxophone, Charlotte Boling	Excellent
Clarinet, Kent Gaitskill.	Excellent

STATE INSTRUMENTAL CONTEST, LEXINGTON

Saxophone, Bobby Jo Slack	Superior
Baritone, Tommy Fullington	Excellent
Band (Class CC)	Excellent
Brass Sextette	Excellent

JUNIOR HIGH

Piano, Mary Jo Hyden	Superior
Clarinet, Mary Jo Hyden	Excellent
Piano, Kay Collier	Excellent



SEATED: Mrs. Louise Clay, Advisor; Elise Hill, Editor. STANDING: Gayle Rees, Assistant Editor; Barbara Williams, Editor.



BUSINESS MANAGERS: Joyce Lowry, Paul Sanders, and Sue Del Campbell.



TYPISTS: Jeanette Ewalt, Marjorie Elvove, and Nancy Harnéy.



FEATURE EDITORS-FRONT ROW: Katie Rison and Sylvia Strickler, Poetry; Peggy Horton and Doris Robertson (ABSENT), Art. BACK ROW: Sue Watlington, Clubs; Jo Ann Fugate, Pictures; Dan Walker, Sports; Nancy Clayton, Pictures; and Bobby Toohey, Sports.

ANNUAL STAFF

ADVERTISING STAFF



Lucy Worick, Wilma Rogers, Mary Sue See, Shirley Earlywine, Joyce Lowry, Janice Jackson, Betty Faye Marshall, Nellie Whalen. ABSENT: Donnie Wells, Charles Leeds, and Sue Del Campbell.

Beauty



Joyce Lowry, Miss Valentine of 1954

Attendants: Anna Jean Blackwell, North Middletown
Dottie Bussell, Bourbon Vocational

King and Queen



Mr. Donald Fair Crowning the King and Queen of the 1954 P. T. A. Carnival, Carol Merringer and Donald Beheler of the Junior Class. Attendants were: Janice Jackson and Paul Sanders, Senior Class; Kay George and Johnny Stuart, Sophomore Class; and Judy Allen and George Wigglesworth, Freshman Class.

Baby Pictures



Nelson



Wanda



Virgil



Janice



Jo Ann



Nancy H.



Mary



Faye



Katie



Wilma



Doris



Betty G.



Dorothy



Stoner



Gayle



Sue



Anna



Nellie



Marcese



Dan



Bobby



Joyce



Sylvia



Mary Margaret



Betty Faye



Sue Del



Nancy C.



Jeanette



Shirley



Marjorie



Barbara J.



Barbara W.



Lucy



Peggy



Brent



Delbert



Jimmy



Billy Bob



Mary Sue



Compliments to
The Senior Class
THE PARIS ROTARY
CLUB

Known For Better Values
LERMAN BROS.
Cash Department Store
Paris --- Kentucky



Compliments of
ARDERY'S DRUGS

Phone 50 Cor. 7th & Main



Compliments of
BOURBON LAUNDRY &
DRY CLEANERS
147 W. 7th St. Paris, Ky.

PEOPLES DEPOSIT BANK
AND TRUST COMPANY
"This bank appreciates
your patronage"



Compliments of
ADAMS AND WATSON DRUGS
Reliable Prescriptions



Compliments of
RAYMOND CONNELL





Junior High





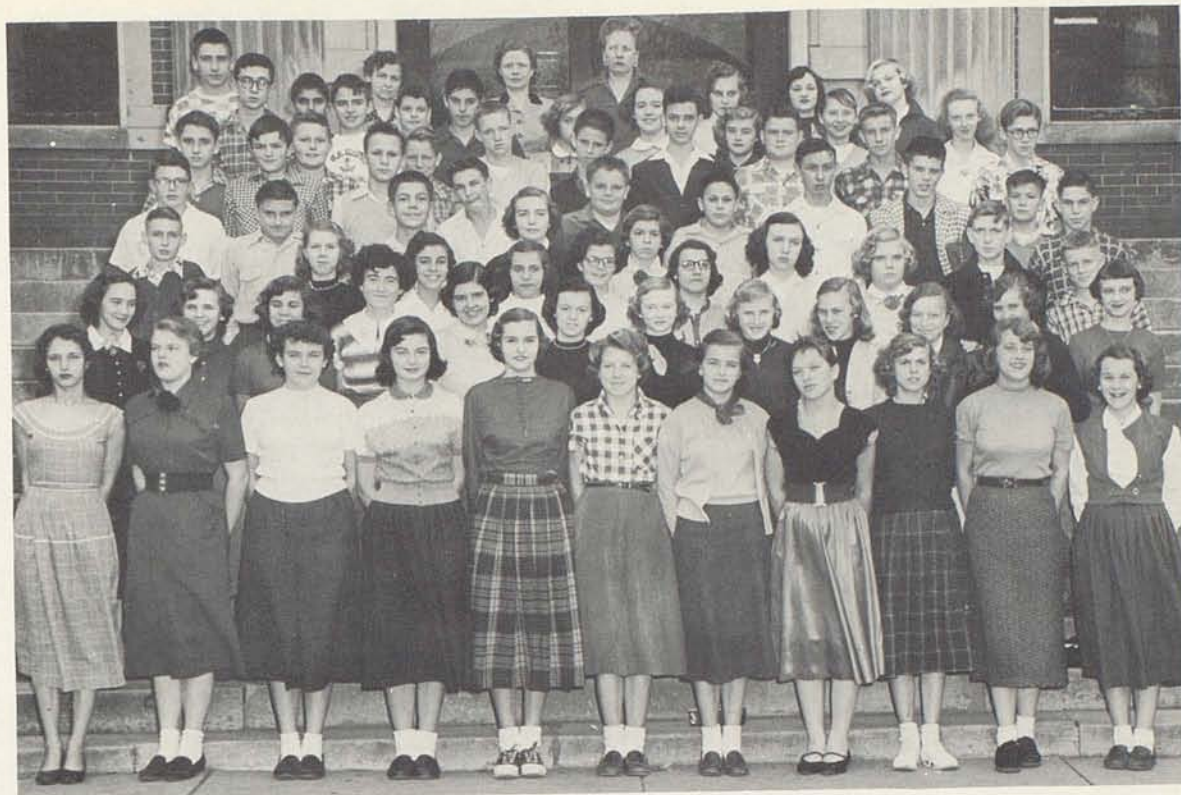
NINTH GRADE

Donald Brown, Mary H. Collins, Judy Culbertson, Charlene Florence, Bobby Hudnall, Sharon Jackson, Eleanor James, Bill Jefferson, Ray Johnson, Janice Jones, Martha Keal, Russell Kenney, Earlen Kenton, Erva King, Betty Lair, Gayle Lawrence, Joella Logan, Joe Lyons, Martha Moore, David O'Neill, Clyde Parson, George Pennington, Phyllis Peters, Doris Jean Ramey, Larry Ransdell, Betsy Talbott, Michael Thornton, Winn Turney, Betty Vandy, Tom Watson, Frank Whalen, Bill Whitelaw, George Wigglesworth, James Cartmill, Dorothy Withrow, Judy Allen, Janice Bosley, Hazel Berry, Richard Brunner, Evelyn Buchanan, Rebecca Burnett, Janice Carr, William Cassidy Jr., Leroy Clark, Barbara Clough, Kay Collier, David Crump, Beth Davis, Wilbur Dotson, Nellie Downing, Shirley Doyle, Barbara Eads, Nancy Elvove, Bill Ferguson, Woodie Florence, Jo Ann Flynn, Rebecca Gaitskill, Ray Gant, Juanita Garrison, Stanley Garrison, Alice Gaunce, Charlene Gaunce, Bill Hayes, Bob Hopkins, Larry McCord, Jim McKinney, Betty Million, Bob Rankin, Kent Gaitskill. TEACHERS: Miss Helen Hunter and Mr. Emmett Davis.



OFFICERS

President . . .	George Wigglesworth
Vice-President . . .	Kent Gaitskill
Secretary . . .	Beth Davis
Treasurer . . .	Betsy Talbot



EIGHTH GRADE

Edmond Boyle, Jane Caywood, Bobby Cassidy, Annette Crossfield, Larry Feld, Ruth Ann Frakes, Carolyn Gaunce, Leslie Lawrence, Olivia Minyard, David Morris, Sonja Olson, Dave Parrish, Mary Prewitt, Melvin Puckett, Don Robertson, Marilyn Sadler, Ralph Shelley, Leslie Smith, Helen Stanfield, Beverly Taylor, Mary Martin Taylor, Forrest Thomas, Bobby Waugh, Jimmy Williams, Patty Page Woodford, Janice Bates, Patsy Bowman, Helen Eades, Barbara Cobb, Bobby Gant, John Gay, Gordon Goode, Margaret Kenney, Bob Letton, Janet Maye, Phyllis Kendall, Clyde Morris, Novellia Nolan, Donna Fay Price, Morrow Richards, Ennis Smits, June Stivers, Sandra Strickler, Jean Thompson, Mildred Turpin, Charles Watson, Robert Williams, Floyd Withrow, Jack Woodford, Bette Zapolsky, Russell Bell, Donna Lou Boettcher, Tommy Bowman, Susann Burnett, Billy Caywood, Joan Cooper, Martha Day, Joe Elvove, Hume Ferguson, Margaret Fryman, Nancy Gardner, Roy Gaunce, Dale Greer, Beverly Hinkston, Mary Jo Hyden, Billy McCracken, Patricia McFarland, Billy Morris, Donald Nichols, Betty Ann Rowe, Kitty Lou Sousley, Barbara Sowards, Barbara Stevens, Zereda Thompson, Johnny Wilson, Frederick Stanley. TEACHERS: Miss Kathleen Lovell, Miss Alice McClintock, Miss Marian Mitchell.



OFFICERS

President . . .	Donna Lou Boettcher
Vice-President . . .	Ennis Smits
Secretary . . .	Sonja Oldson
Treasurer . . .	Patty Page Woodford



SEVENTH GRADE

Eleanor Ardery, Betty Arnold, Billy Baber, Boone Baldwin, Barbara Bean, Charlotte Boling, Harold Browning, Tommy Buckner, Carl Cassidy, Robert Charles, Jane Collier, Edwin Conyers, Phyllis Dotson, Mary Fairchild, Beulah Gray, Peggy Humphrey, Danny Jefferson, Sally Jones, Judith Jordan, Wayne Jordan, Carol Kelly, Bobby Linville, Virgil Lyons, John Merringer, Louevia Minyard, Reggie Monson, Jimmy Morris, Elizabeth McCann, Hunter Pipes, Bobby Sanders, Roger Sledd, Tommy Sledd, Joe Wells, Nettie Williams, Ardith Bates, Herbert Bennett, Jane Bishop, Eddie Breeze, Shirley Buchanan, Frances Burnett, James Carpenter, Frances Cordray, Kenneth Cummins, Charles Day, Jackie Elvove, Mary Ewalt, Carl Gaunce, Patricia Hudnall, John Johnson, Emma Logan, Bill Lucky, Hugh Marshall, Barbara Myers, George McIntosh, Lillian Nolan, Jerry Ormes, Phyllis Osborne, Rose Plummer, Roy Puckett, Jackie Shout, Paul Snapp, Merrill Snowden, Billy Weaver, April Williams, Joy Withrow, Roger Withrow, Betty Zornes, John Adams, Leatha Adams, Bonnie Arthur, Nancy Arnold, Jane Arnsparger, Linda Boling, Betty Brunner, Emma Charles, Bobby Coldiron, Richard Conley, Donnie Crump, Rose Day, Shirley Dray, Henry Everman, John Faris, Bennie Fugate, Mary Garrison, Jack Guy, Jerry Jones, Ruby Jones, Alice Lawrence, Bobby Million, Eleanor McDaniel, Christine McFarland, Billy Owens, Nora Puckett, Lee Renfrew, Jackie Ryan, Earl Saylor, Eleanor Stanfield, Dora Wagoner, Otis West, Georgia Hendrick. TEACHERS: Mr. Frank Bloss, Miss Mary Alma Purcell, Miss Agnes Purnell.



OFFICERS

President	Lee Renfrew
Vice-President	Elizabeth McCann
Secretary	Danny Jefferson
Treasurer	Ardeth Bates

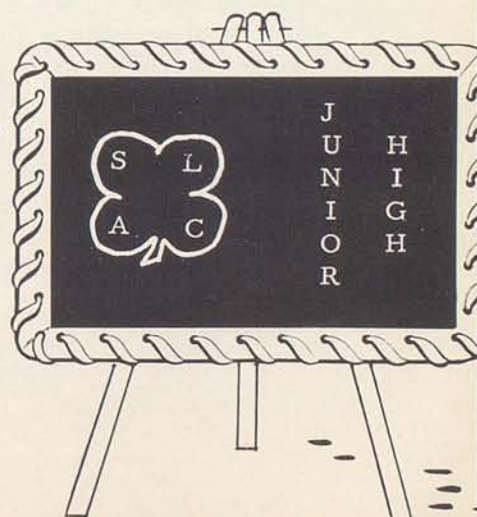
Junior High Honor Society



ORANGE AND BLACK

MEMBERS-1st YEAR: Sandra Strickler, Betty Zapolsky, Mary Jo Hyden, Morrow Richards, Patty Page Woodford, Mary Martin Taylor, Billy Caywood, Dave Parrish, Joan Cooper, Jean Thompson, Sonja Oldson, Donna Lou Boettcher, Ennis Smits. 2nd YEAR: Judy Allen, Doris Ramey, Russell Brunner, Betty Lair, Beth Davis, Shirley Doyle, Rebecca Burnett, George Wigglesworth, Martha Keal, Charlene Florence, Charlene Gaunce. 3rd YEAR: Belle Brent Ward, Betsy Doyle, Jane Toohey, Jane Carol Florence, Anne Barnett, Sara Hyden, Marium Thomas, Anne Thompson.

PROGRAM: Shirley Stanforth, Alice Wigglesworth, Jean Harney, Bonnie Hause, Marilyn Elvove, Patty Dotson, Sandra Connell, Ava Mae McCann, Nancy Ballard.



Junior High Sports



Football

FIRST ROW: Tommy Buckner, Hugh Marshall, Dave Parrish, Joe Elvove, Bobby Gardner, Bob Letton, John Merringer. SECOND ROW: Ralph Patterson, Coach; Paul Snapp, "Red" Morris, Wayne Jordan, Johnny Wilson, Bobby Waugh, Tommy Watson, Donald Brown, Edmond Conyers, Boone Baldwin. THIRD ROW: Otis West, Earl Saylor, Tom Parrish, Dale Greer, Hunter Pipes, Jake Elvove, Bennie Fugate, Bobby Gant, Jack Shout, Carl Gaunce.

Basketball

The Junior High basketball team showed a great deal of improvement over last year's team. During the '52-'53 season, the Thoroughbreds won only three games while losing nine. In contrast the team of this '53-'54 school year won seven games while losing five. By defeating Georgetown in the last game of the regular season, Paris Junior High qualified for the Junior Bluegrass Conference tournament held in Lexington. Despite a good showing in view of the fact that two of the regular first string boys were ill and unable to play, the Thoroughbreds were defeated by Lexington Junior High, a perennially strong team in Central Kentucky junior basketball circles. During the regular season, the Parisians defeated M. M. I., Georgetown, and Cynthia twice each. Out of twelve boys who lettered, only one will be returning to the Thoroughbred roster next year--Danny Jefferson. The other eleven will be among those to bolster the squad of the Greyhound varsity and B-team.

Those boys who lettered during the '53-'54 season are: George Wigglesworth, Tommy Watson, Donald Brown, David Crump, George Pennington, Floyd Withrow, Kent Gaitskill, Mike Thornton, Frank Whalen, Clyde Parsons, Billy Whitelaw, and Danny Jefferson. The Thoroughbreds are coached by Ray Kring, who completed his second year at the helm of the Junior High boys.

LEADERS CHEERERS



KNEELING: Rebecca Gaitskill, Judith Allen, and Betsy Talbot, Freshmen. STANDING: Barbara Sowards, Sonja Oldson, and Helen Eades, Eighth Grade; Charlotte Boling and Barbara Bean, Seventh Grade.



Safety Patrol

These boys are members of the Safety Council which gives protection to the children of the grades as they cross the streets coming and going from school. There are nine Freshmen and two Sophomores on the Council.

FIRST ROW: Stanley Garrison, Larry Myers, Billy Pitts, and George Pennington. SECOND ROW: Russell Brunner, Clyde Parsons, Mike Thornton, Robert Hopkins, Wilbur Dotson, Frank Whalen, and Woody Florence.



SPIKES CONFECTIONERY

ELLIS JEWELERS

BOND CLEANERS

FARRIS PHOTO STUDIO

BOURBON LOCKER PLANT

BOURBON HATCHERY

COLONIAL MOTEL

SCHINE THEATRES

SMITS GREENHOUSE

HINTON-TURNER FUNERAL HOME

J. K. GREER

SUMMERHAYES
LUMBER & COAL CO.

FOOKES' GROCERY

BALDWIN MOTOR CO.

JACK COHAN

SAMUEL MILNER

WHEELER FURNITURE CO.

THE KENTUCKIAN - CITIZEN

PARIS GARAGE

CROWN JEWELERS

DAVIS FUNERAL HOME



BOURBON HARDWARE

JACKSON'S RADIO SHOP

BALDWIN HOTEL

BOBBITT AND HUDSON

JONES SERVICE STATION

FRED ATKINSON AND SONS

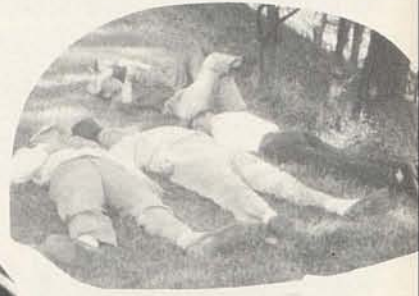
GOREY INSURANCE AGENCY

OWENS & TAYLOR MARKET

PIPES CHEVROLET COMPANY



Washington Trip





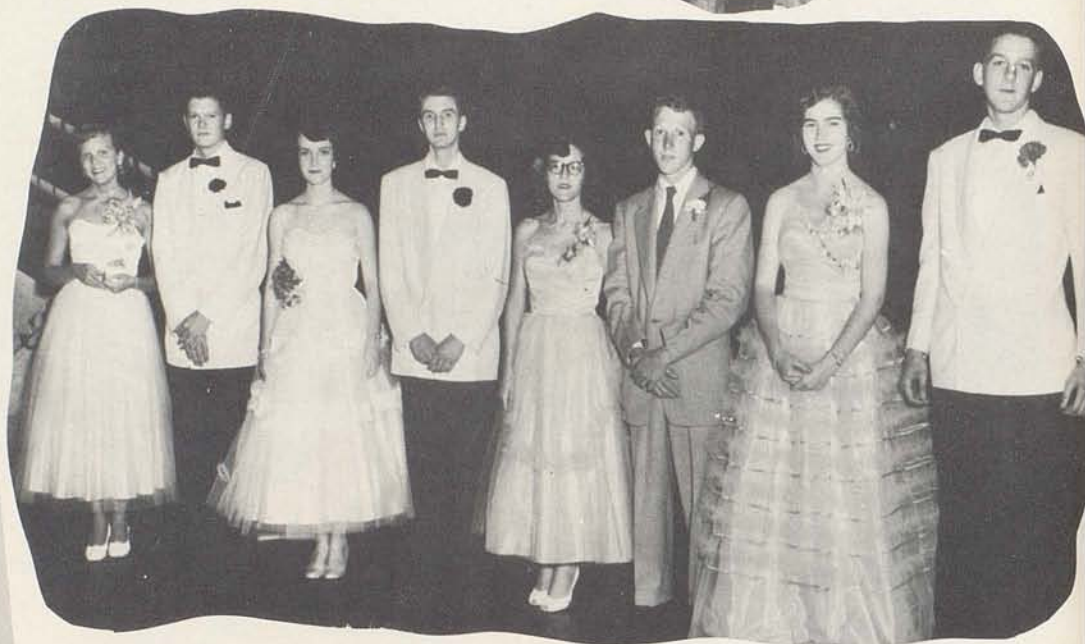
The Paris High School
Senior Class
presents
"CURTAIN GOING UP!"
Cast

Miss Burgess	Jo Ann Fugate
Lorry Fuller	Sylvia Strickler
Nancy Leveridge	Doris Robertson
Miss Moran	Jeanette Ewalt
Mr. Carter	Gayle Rees
Buck O'Hara	Brent Clay
Jocko Guthrie	Dan Walker
Mr. Leveridge	Paul Sanders
Jean White	Mary Booth
Andy Fullbright	Bobby Toohey
Kyle Roberts	Nellie Whalen
Miss Rivers	Barbara Williams
Sylvia Moore	Nancy Clayton
Milt Sanders	Virgil Arnold
Janet Young	Sue Watlington
Elsie Hunter	Sue Del Campbell
Mr. Peterson	Delbert Smith
Extras	Wilma Rogers
	Mary Sue See
	Betty Garrison





The Junior Prom 1 9 5 4



RECEIVING LINE: Nancy Ballard, Jimmy Greer, Jean Harney, Dabney Johnson, Mrs. Bobby Brown, Mr. Bobby Brown, Patty Dotson, and Larry Jordan.

The Junior Class
of the
Paris Senior High School
invites you to its
Reception and Dance
Friday, May twenty-eighth
Southside Gym 9 to 12

PRESENT INVITATION AT DOOR



Class Night



Nellie gives some timely tips on how to become an author!



Who's been robbing the cradle---hmmmm?



Serenade to the popular "Sweethearts of Paris High"



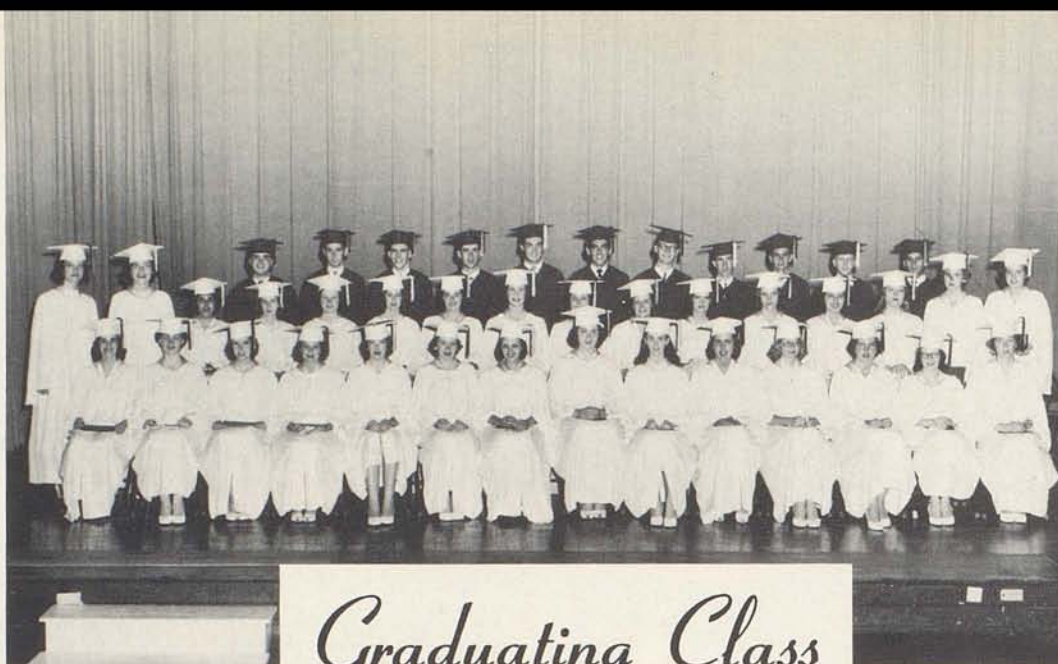
Six drips give their rendition of "Garden in the Rain"



Toohey calls them "Paris High's Four Biggest Slobs!"



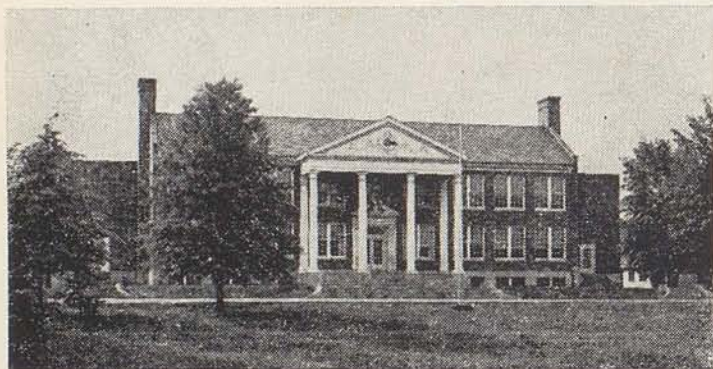
So dear old school, as friends must part,
We say goodbye, but deep in each heart
We treasure the memories of these by-
gone years
As we think of you through our tears.



Graduating Class

Paris Senior High School

Commencement Exercises

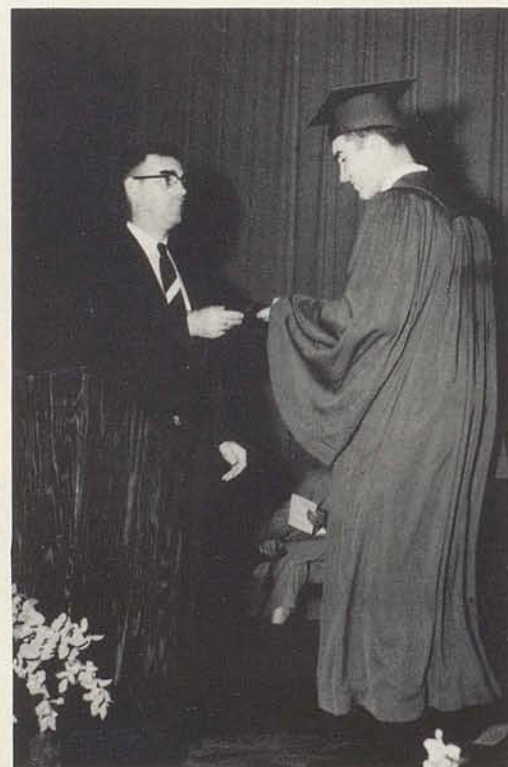


SOUTHSIDE SCHOOL, Paris, Kentucky

SOUTHSIDE SCHOOL
PARIS, KY.

FRIDAY EVENING, JUNE 11, 1954

EIGHT O'CLOCK



Superintendent Russell Presents
Diploma to the President of the
1954 Graduating Class.

Paris High Graduates Hear Formula For Abundant Living

Graduates of the Paris High school were given three words last night and told if those words were properly applied to everyday living they would lead to finding an abundant life.

Dr. Leslie R. Smith, pastor of the Central Christian church of Lexington, the speaker at the annual commencement ceremonies, presented the key words to abundant living in his address to the students, the words being "appreciation", "imagination" and "creation."

The speaker said he chose the three simple words for his subject because he thought there should be a return to the simple things of life.

"Learn how to be appreciative," Dr. Smith admonished the graduates, then telling them that it was equally important to learn to be imaginative and that if they developed appreciation and imagination their creative ability would follow, only through creation could progress be achieved.

The commencement, the first in many years held at night, was held in the Southside School auditorium and drew one of the largest attendances in the history of the school.

Despite the sweltering heat, the audience was particularly appreciative of the commencement program that included vocal presentations by the combined choral groups of the high school, accompanied by the school band, all under the direction of T. A. Siwicki.

Donald H. Fair, principal of the high school, presented the various awards and honors. The awards and the recipients were:

Palmer Davis citizenship awards—Mary Booth and Jimmy Wills.

DAR good citizenship award—Sue Watlington.

Best work in second year Latin—Ann Thompson.

Best student in European history—Ann Thompson.

Best in first year French, based on state wide exam and winning third ranking in state—Ann Thompson.

Student doing the best work in third year Latin—Jean Harney.

Best student in American history—Jean Harney.

Best student in first year Spanish—Carol Merringer.

Superior work in first year typing (70 words per minute)—Carol Merringer and Ava Mae McCann.

Best student in second year French—Sylvia Strickler.

Outstanding work in shorthand (120 words per minute)—Sylvia Strickler and Barbara Jones.

Best student in second year Spanish—Sue Watlington.

High school students with perfect attendance records for the year—Marion Johnson, senior; Jean Harney, junior; Jane Florence, Carolyn Moore and Jacquelyn Riggert, sophomores.

The Marguerite McLaughlin certificate for outstanding service in scholastic yearbook production, good citizenship and high scholarship—Elise Hill and Barbara Williams.

National Forensic League awards—Degree of Merit, Sue Watlington, Ann Barnett, Sue Ewalt, Mariam Thomas and Bell Brent Ward; Degree of Honor, Jane Florence and Ann Thompson; Degree of Honor and Excellence, Jo Ann Fugate and Sylvia Strickler.

Music awards usually presented at the commencement did not arrive in time to be presented at the commencement. They will be distributed when they arrive.

The awards and the ratings they won include Bobby Joe Slack, superior, saxophone solo; Tommy Fullington, excellent, baritone solo; high school choir, superior; Parisianaries, excellent; brass sextet, excellent; band, excellent.

The two Palmer Davis citizenship awards were inadvertently omitted in the presentations Friday night, however, were made later.

W. F. Russell, superintendent of the city school system, presided at the commencement. The invocation was made by the Rev. J. W. Clotfelter with the benediction being made by the Rev. Rhodes Thompson.

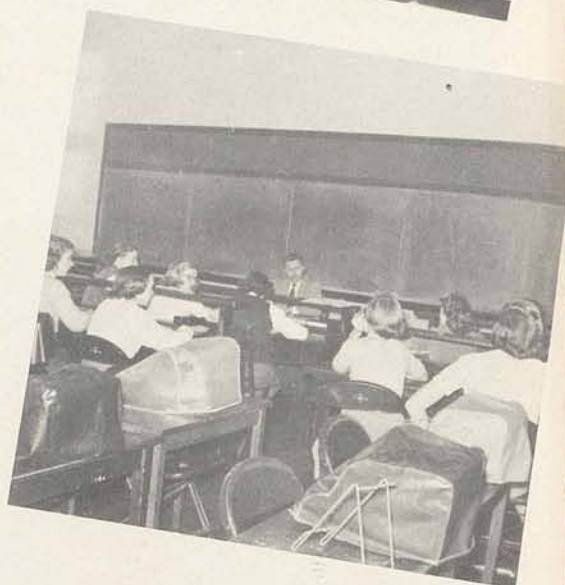


The combined choir, glee club, and band present music at the 1954 graduation.

A R O U N D

P A R I S

H I G H



DR. & MRS. B. N. PITTENGER
PARIS ROTARY CLUB
HALL'S MARKET
CHAS. P. COOK CO.
PARIS LAUNDRY
KENTUCKY UTILITIES CO.
RYE'S
NICK'S RESTAURANT

VOGLER DRUG CO.
WESTERN AUTO
JACK COHAN & SONS
BELT AND WATSON
J. W. DAVIS & CO.
SMOKE HOUSE
DR. WILLIAM S. MORGAN
MAIN STREET MARKET

J. C. PENNEY CO.
PARIS MONUMENT WORKS
WOLLSTEIN'S
SOUSLEY MOTORS
HUSTON AND DOYLE
THE A. J. WINTERS CO.
F. C. JOHNSTON
DORSEY FURNITURE CO.

Myers
YEARBOOKS
in deeptone



Jo Ann Fugate
Mareese Haurning
Anna Jones
Shirley Edgeline
Mary Booth
Betty Lou Garrison
Don Warner

Janice Jackson
Dorothy Real Woolly
Faye Humphries

Barbara Jones

Jeanette Ewalt

Delbert K Smith

Sue Del Campbell

Gwynne Fishback

Wanda Hughes

Mary Margaret Hallen

Marjorie Chron

Beggy Horton

Marion Johnson
Brent Clay

Virgil Arnold

Autographs

Doris Robertson

Nancy Harney

Gayle Rees

Sylvia Strickler

Jimmy Wills

John Soder

Katie Rees

Sue Wallington

Wilma Rogers

Joyce Lowry

Robert Hooley

Betty Joyce Marshall

Lucy Wink

Nellie Whalen

Mary Sue See

Paul Sanders

Elise Hill

Nancy Clayton

Billy Bob McIntire

Buddy Leeds

Stoner Parsons

Barbara Williams

