

# PARIGIAN

1955

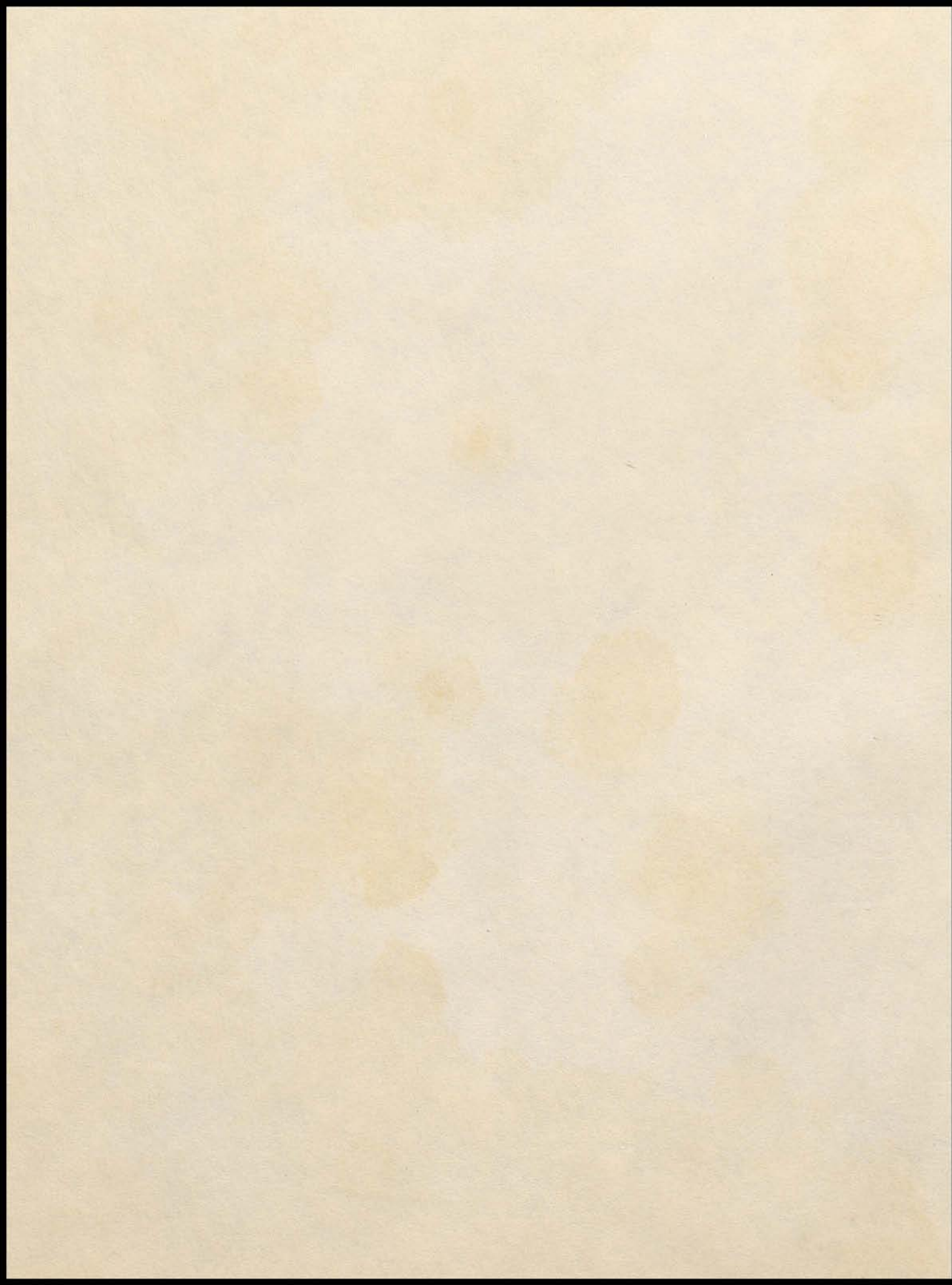




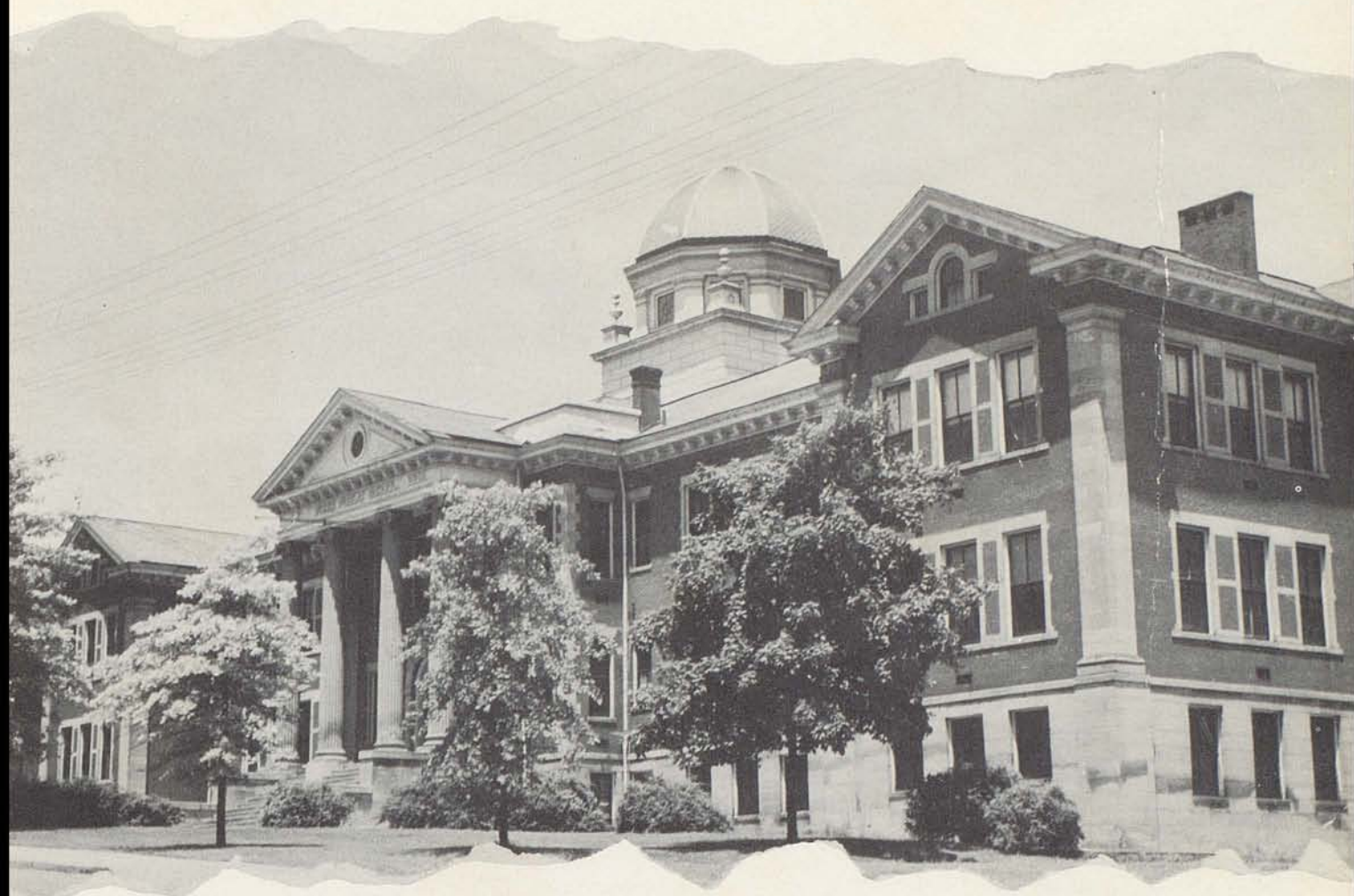




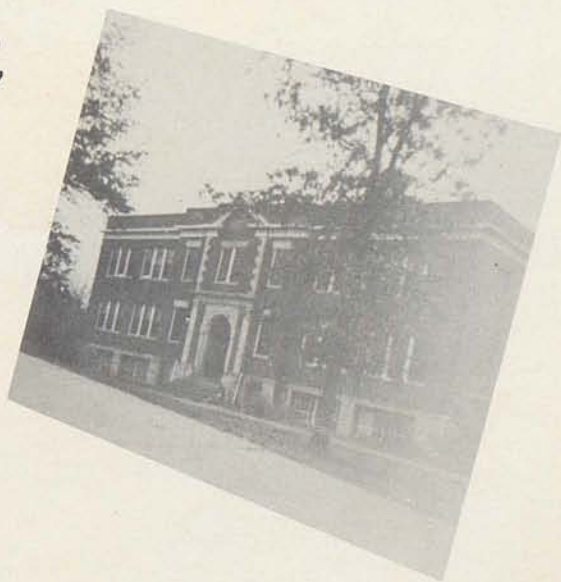








# *The Parisian* 1955



*Edited By*  
*The Senior Class*  
*Paris High School*  
*Paris, Ky.*



## *Dedication*



To Mr. Siwicki, who has given so willingly of his time and talents to the school and community, and whose untiring efforts, and genuine interest in all of us has been such an inspiration, we, the Senior Class of 1955, dedicate this annual.



# *Appreciation*



A TRIBUTE  
TO  
MISS GILBERT LAVIN  
AND  
MISS BETSY BROOKS WOODFORD

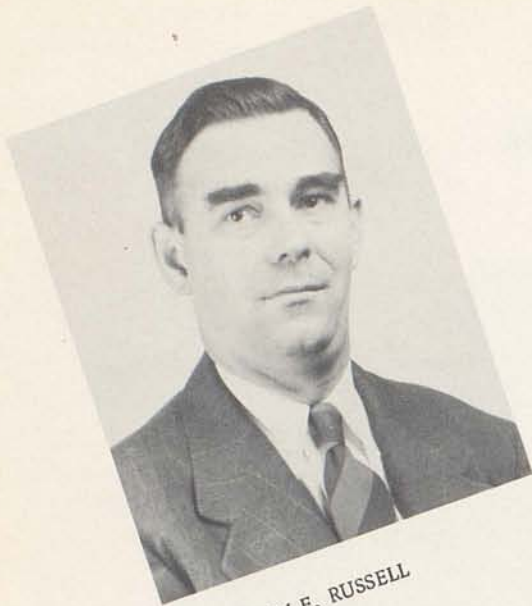
The Senior Class of '55 wishes to pay tribute to Miss Lavin and Miss Woodford for their influence and undying inspiration; for their encouragement and sincere friendship.

We wish to express our deepest gratitude and sincere appreciation to two of the finest teachers in the world and hope that they will continue to give to others the wonderful help and guidance they have given to us.

"I'd like to be the sort of friend that you have been to me;  
I'd like to be the help that you've been always glad to be;----"

--Edgar A. Guest--





WILLIAM F. RUSSELL  
Superintendent  
A.B. Centre College  
M. A. University of Kentucky



DONALD FAIR  
Principal  
A.B. Morehead State College  
M.A. Morehead State College

## *Administration*

MRS. FRANK DALBY  
Secretary





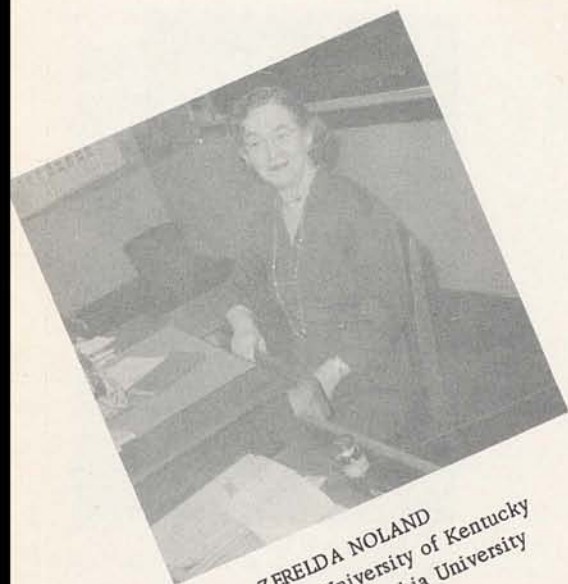
# FACULTY



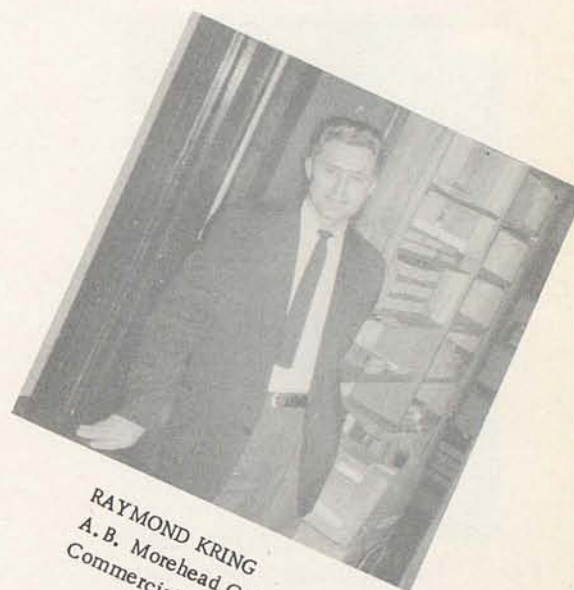
BETSY BROOKS WOODFORD  
A.B. University of Kentucky  
Romance Languages



GILBERT LAVIN  
A.B. University of Kentucky  
M.A. University of Michigan  
Latin



ZERELDA NOLAND  
A.B. University of Kentucky  
M.A. Columbia University  
English



RAYMOND KRING  
A.B. Morehead College  
Commercial

MARY ELEANOR ISGRIG  
A.B. University of Kentucky  
Science



MRS. DUKE YOUNG  
A.B. Randolph Macon College  
Mathematics



MRS. JAMES HANSON  
A.B. Western State College  
Social Science





ALICE McCLINTOCK  
A.B. Georgetown College  
M.A. University of Michigan  
Latin



AGNES PURNELL  
A.B. University of Kentucky  
Mathematics



FRANK BLOSS  
A.B. Morehead College  
Science

# F A C U L T Y



HELEN HUNTER  
A.B. University of Kentucky  
M.A. Columbia University  
History



MARY ALMA PURCELL  
A.B. Western State College  
English



MARION MITCHELL  
A.B. Randolph Macon College  
M.A. Columbia University  
Geography



KATHLEEN LOVELL  
A.B. University of Kentucky  
English



EMMETT R. DAVIS, JR.  
B.S. University of Kentucky  
M.A. University of Kentucky  
Mathematics, Social Science





TERPSYTHEA CHALKAS  
B. M. University of Kentucky  
Music



THOMAS A. SIWICKI  
B. M. Ed. De Paul University  
M. A. University of Kentucky

# FACULTY



MRS. LOUISE C. CLAY  
A. B. University of Illinois  
Librarian



MRS. CAROLYN C. SCOTT  
B. S. Eastern Kentucky State College  
Home Economics



RALPH PATTERSON  
A. B. Eastern Kentucky State College  
Physical Education



MRS. DAN PEED  
B. S. University of Kentucky  
Home Economics



# Annual Staff



Jean Harney

## CO-EDITORS



Sandra Connell



ASSOCIATE EDITORS



BUSINESS MANAGER & AD SALESMEN



TYPISTS & WRITERS

WE, THE ANNUAL STAFF, WISH TO EXPRESS OUR SINCERE APPRECIATION TO MRS. JOHN C. CLAY FOR ALL THE HARD WORK SHE HAS DONE IN HELPING US PREPARE THIS ANNUAL.

## ANNUAL STAFF MEMBERS

CO-EDITORS . . . . .	Sandra Connell
	Jean Harney
BUSINESS MANAGER . . . . .	James Greer
COPY EDITOR. . . . .	Lynne Santen
LAYOUT EDITOR. . . . .	Jill Nolan
PHOTO EDITOR . . . . .	Jerry Robin
SNAPSHOTS . . . . .	Joyce White
DESIGNER . . . . .	Rose Carol Shumate
AD SALESMAN . . . . .	Pat Dotson,
	Tommy McMahan, Margaret Anderson,
	Bettie Hall, Rosemary Lutes,
	Shirley Stanforth, Dabney Johnson,
	Rose Carol Shumate, Nancy Ballard,
	Joyce White, Marilyn Elvove,
	Ave Mae McCann, Alice Langfels,
	Patty Smith
TYPISTS . . . . .	Carol Merringer,
	Ava Mae McCann, Barbara Jones,
	Alice Langfels
WRITERS . . . . .	Nancy Ballard,
	Marilyn Elvove, Patty Smith
INDIVIDUAL PICTURES . . .	Marylyn Hurst
BOOK SALES . . . . .	Nancy Ballard,
	Marilyn Elvove, Alice Langfels,
	Ava Mae McCann



# *I Love Paris In*





# The Seniors Ride

Come my children and lend an ear,  
And I'll spin a yarn for you all to hear.  
It's all about the class of fifty-five,  
And of the goals for which they did strive.

We hopped on our ponies on September first.  
And at that time nothing could have been worse.  
And went galloping off on our way to school  
For we knew that we couldn't break the rule.

What a hard life the teachers led  
At least that's what they all have said.  
When whooping and hollering into their classes we came,  
They vowed that they would never be the same.

We left the grades and mounted the steep,  
And behind us left many memories deep.  
Now soft on new ground we rode,  
To carry the burdens of the Junior High load.

These three years we had a lot of fun,  
With new activities that kept us on the run.  
But classes seemed to have gotten mighty rough,  
And passing sure was going to be tough.

So through the years rode our class,  
And we reached our destination at last.  
As silly Sophomores we lived up the name,  
And had new tricks for every game.

As jolly Juniors we were happy and gay,  
And had big plans for every day.  
The Junior Prom of which we can brag,  
Was enjoyed by all. Not once did it drag.

Fifty-one Seniors are in our class  
Our school chums of old are hard to surpass,  
Some, when we leave will shed a tear,  
While others are glad Graduation's so near.

The years have rolled by, one by one,  
We're out in life, we've had our fun.  
Out paths are parted-we go separate ways.  
Our childhood is over-it seems in a daze.

When we think of our history in the past  
And hear the hurrying hoof-beats of our class.  
We know some may fall and others may die.  
But we'll all be together as "Riders in the Sky."





## Senior Officers



President . . . .	Lynn Santen
Vice-President . .	James Greer
Secretary . . . .	Barbara Jones
Treasurer . . . .	Nancy Ballard







MARGARET SUE ANDERSON

"Margaret and George may often fight,  
But things usually come out all right."  
Junior Chorus 1; Glee Club 2, 3, 4; Choir 4; Tri-Hi-Y  
2, 3, 4; Speech Club 4; Romance Language 3; Latin Club  
2; Annual Staff 4; Commercial Club 3, 4.

CHARLES TEMPLE ATKINSON

"Charlie is friendly and not a bit shy,  
So let's admit he's quite a guy."  
Latin Club 2, 3, 4; Football 1, 2, 3, 4; Basketball 2; Base-  
ball 1, 2, 3, 4.



NANCY JANE BALLARD

"What would happen if Nancy got a call,  
From a certain "brother" who plays basketball."  
Junior Chorus 1; Orange and Black 1; Glee Club 2, 3, 4;  
Speech Club 2, 3, 4; Latin Club 2; Tri-Hi-Y 2, 4; Service  
Club 4; Commercial Club 3, 4; Choir 4; Class Officer  
(Secretary) 2, 3, (Treasurer) 4; Romance Language 3;  
Annual Staff 4; Beta Club 3, 4; Girls State 3.

## Seniors

ALICE ANNE HUDNALL

"Alice has already fulfilled her ambition,  
Cooking and cleaning in 'Hotshot's' kitchen."  
Junior Chorus 1; Glee Club 2, 3; Latin Club 2; Service  
Club 4; Beta Club 3, 4; Annual Staff 4; Class President  
1; Orange and Black 1; Red Cross 1, 2, 3.

TOMMY DUKE BELT

"Tommy Duke is our sure bet,  
He's never let the Greyhounds down yet."  
Basketball 1, 2, 3, 4; Football 4; Latin Club 2; Hi-Y 4;  
Golf 2; Service Club 4; Class Officer 1, 2; Basketball  
Captain 4.



BETTY ANN BUCKLER

"A husband is what Betty did seek,  
And she found one that she's going to keep."  
Home Ec. 1, 2; Junior Chorus 1; Glee Club 1, 2; Romance  
Language Club 3; Tri-Hi-Y 2; Commercial Club 3, 4.

DONALD STEWART BEHELER

"A swell guy who really rates,  
A Sophomore is his steady date."  
Choir 2, 3, 4; Football 1, 2, 3, 4; Basketball 2, 3, 4; Hi-Y  
2; Commercial Club 3, 4; Captain of Football Team 4; 12  
Class Officer 2; P. T. A. King 3; Parisionaires 4.





JANE LOIS TURPIN

"Jane has found another romance,  
It looks like Russell doesn't have a chance."  
Band 1, 2, 3; Glee Club 2, 3; Choir 2, 3; Mathematics Club  
2; Romance Language Club 2, 3; Latin Club 2; Parisian  
Circle 3; Service Club 4; Commercial Club 3.

BOBBY TAYLOR

"Bobby, oh Bobby you're driving us nuts,  
Doesn't your mouth ever stay shut?"  
Hi-Y 4; Spanish Club 3; Commercial Club 3.

SHIRLEY STANFORTH

"There is nothing this girl needs  
She is most likely to succeed."  
Orange & Black 1; Cheerleader 1; Jr. Chorus 1; Glee  
Club 2, 3; Latin Club 2; Speech Club 2, 3, 4; Math Club  
2; Home Ec. 1, 2; Beta Club 3, 4; Majorette 3, 4; Service  
Club 4; Choir 4; Tri-Hi-Y 2, 4; Commercial Club 3, 4;  
Annual Staff 4.



## Seniors

JANET SHOUT

"Janet and Donald you'll always see,  
Sweethearts they will forever be."  
Glee Club 2, 3; Tri-Hi-Y 2, 3, 4; Romance Language 2;  
Speech Club 2; Home Ec. 1.

DENNIS SPIVEY

"'Dennis the Menace' is in our room."  
He will surely lead us to our doom."  
Hi-Y 2, 4; Latin Club 2; Commercial Club 3.

ROSE CARL SHUMATE

"Rose Carol can really do the shimmy,  
And she gets along fine with a certain Jimmy."  
Latin Club 2; Speech Club 2, 3, 4; Tri-Hi-Y 2, 3, 4; Choir  
2, 3; Glee Club 2, 3; Commercial Club 3, 4; Majorette  
3, 4; Romance Language 3; FHA 4; Annual Staff 4.

JOHN CRUMP

"He didn't win, but he's still our king.  
We all think he's the real thing."  
Football 1, 2, 3; Choir 1, 2, 3; Hi-Y 2, 3; Basketball 2, 3;  
Commercial Club 3, 4; Junior Chorus 1.







#### JUNIOR WARREN

"Come on Jr. Give us a line,  
On the girl whose been keeping your time."  
Choir 3; Band 1, 2, 3, 4; Hi-Y 4; Trumpet Trio 4; Ensemble 4.

#### SANDRA CONNELL

"Buzz, buzz busy as a bee,  
Full of life and fancy free."  
Beta Club 3, 4; Tri-Hi-Y 2, 3, 4; Romance Language Club 2, 3; Speech Club 2, 3, 4; Latin Club 2; Junior Chorus 1; Glee Club 4; Math Club 2; Commercial Club 3, 4; Band Sponsor 4; Girls State 3; Annual Staff 4; Service Club 4; Orange and Black 1; Home Ec. 1; N.F.L. 4; Debating 4.



#### PAT DOTSON

"Hey, Hey what do we hear,  
Is Larry Jordan all Patty can cheer."  
Latin Club 2, 3, 4; Commercial Club 3, 4; Annual Staff 4; Beta Club 3, 4; Service Club 4; Orange and Black 3; Chapel Choir 2, 3, 4; Parisianaires 3, 4; Girl's Trio 3, 4; Glee Club 2, 3, 4; Class Officer 1, 3; Parisian Circle 4; Cheerleader 2, 3, 4; Math Club 2; Jr. Chorus 1.

## Seniors

#### CHARLOTTE WAUGH

"A pretty girl with a friendly way  
She'll make someone happy someday."  
Home Ec. 1, 2; Latin Club 2; Tri-Hi-Y 2; Romance Language Club 3; Service Club 4; Commercial Club 3, 4.

#### WILLIAM H. COLLIER

"Billy Collier is sort of shy,  
Why, he wouldn't even harm a fly."  
Commercial Club 4.

#### MARILYN ELVOVE

"Marilyn is known as Miss Chatterbox of '55'  
How can we help from knowing that she's alive?"  
Jr. Chorus 1; Orange and Black 1; Glee Club 2, 3, 4; Choir 2, 3, 4; Speech Club 2, 3, 4; Service Club 4; Latin Club 2; Tri-Hi-Y 2, 4; Commercial Club 3, 4; Romance Language 3; Math Club 2; Annual Staff 4; Beta Club 3, 4.

#### ROY PARKER

Roy is the envy of all the girls,  
Because he has such pretty curls.





BOBBY DOTSON

"Bobby Dotson is Ardrey's soda jerk  
To hear him talk; he does all the work."  
Basketball 1; Commercial Club 4; Hi-Y 2.

JILL NOLAND

"Call him William but not Bill.  
Please tell us the reason for this Jill."  
Junior Chorus 1; Tri-Hi-Y 2; Glee Club 2; French and  
Spanish Club 2, 3, 4; Service Club 4; Latin Club 2; Beta  
Club 4; Math Club 2; Speech Club 2, 3, 4; Choir 3, 4; Band  
1, 2, 3, 4; Annual Staff 4; FHA 4; Parisianaires 3, 4;  
Solo 3, 4.



DONALD FARRIS

"Tall, strong and handsome too,  
He belongs to Janet, we all know what's true."  
Football 4; Baseball 2; Basketball 4.



## Seniors

BETTIE BRUCE HALL

"In her blue Ford she whizzes along  
Happy as a lark, singing a song."  
Tri-Hi-Y 1, 2, 3; Latin Club 1; Glee Club 1, 3; Junior  
Chorus 1; French and Spanish Club 3; Service Club 4;  
Home Ec. 1, 2, 3.

JIMMY GREER

"Oh what a hard life Jimmy has led.  
Hardly ever at school, always in bed."  
Band 1, 2, 3; Choir 4; Latin Club 2, 3, 4; Math Club  
2, 3, 4; Speech Club 2, 3, 4; Parisian Circle 2, 3, 4; Class  
Officer 3, 4; (President) 3; Commercial Club 3; Service  
Club 4; Annual Staff 4; Beta Club 3, 4; (President) 4.

JOYCE WHITE

"To lasso Jack is her aim.  
She seems to think he's good game."  
Junior Chorus 1; Latin Club 2; Glee Club 2, 3, 4; Tri-Hi-Y  
2; Romance Language Club 3; Service Club 4; Home Ec.  
4; Annual Staff 4; Commercial 3, 4.

MARILYN HURST

"Marilyn Ann is not hard to please,  
Just mention Gayle and she seems to freeze."  
Junior Chorus 1; Glee Club 2, 3; Tri-Hi-Y 2, 4; Latin Club  
2; Service Club 4; Annual Staff 4; Commercial Club 3, 4.







VOL FERGUSON

"Mirror, Mirror on the wall  
Why, oh why am I so tall?"  
Football 3, 4; Hi-Y Club 2, 4; Basketball 1, 2, 3.

BILLYE JO HARNEY

"For Billye and Roy wedding bells will ring,  
Yes, kids this looks like the real thing."  
Majorette 1, 2, 3, 4; Tri-Hi-Y 2, 4; Glee Club 1; Annual  
Staff 4; Spanish Club 3; F. H. A. Club 4; Junior Chorus 1.



TOMMY FULLINGTON

"Wake up Tommy it's time for the bell  
If you don't quit sleeping you're liable to fail."  
Band 1, 2, 3, 4; Choir 2, 3, 4; Football 2, 3, 4; Parisianaires  
3, 4; Hi-Y 2, 3, 4, President 4; Latin Club 2; Romance  
Languages 3; Commercial Club 3, 4; Music Contest 1, 2,  
3, 4; Safety Patrol Boy 2; Music Appreciation 3.

## Seniors

JEAN HARMEY

"Jean is the smartest in the class  
If we had her help, we all would pass."  
Class Officer 1; Latin Club 2, 3, 4; Choir 4; Tri-Hi-Y 2, 4;  
Red Cross Representative 3; Girls State 3; Commercial  
Club 4; Glee Club 1, 2, 3, 4; Junior Chorus 1; Music  
Appreciation 3; Beta Club 3, 4; Annual Staff 4; Orange &  
Black 1; Parisian Circle 2, 3, 4; Service Club 4; N. F. L.  
4; Debating 4.

BARBARA JONES

"Barbara's name will soon be James,  
Since into her life Dickie came."  
Home Ec. 1, 2; Jr. Chorus 1; Latin Club 2; Tri-Hi-Y  
2, 3, 4; Glee Club 4; Speech Club 2, 3, 4; Majorette 3;  
Drum Majorette 4; Commercial Club 3, 4; Service Club  
4; Class Officer 4; Beta Club 3, 4; Annual Staff 4; Math  
Club 2.

DABNEY JOHNSON

"Earleen is always waiting for his call,  
Watch them courting in the hall."  
Band 1, 2, 3, 4; Latin Club 2, 3, 4; Math Club 2; Chapel  
Choir 2, 3, 4; Parisianaires 3, 4; Parisian Circle 3, 4;  
Service Club 4; Annual Staff 4; Band Officer 2, 3, 4.

ALLISON DRISCOLL

A nicer man you'll never meet,  
I'm sure no one has him beat.





BERTHA MYERS

"She's never sad but always gay,  
We can't imagine her any other way."

Junior Chorus 1; Band 2; Home Ec. 2, 3; Service Club 4;  
Latin Club 2.

ALICE LANGFELS

"It seems like Alice is always late,  
Wonder what would happen if Joe asked her for a date."

Home Ec. 1, 2; Junior Chorus 1; Class Officer 1; Latin  
Club 2; Glee Club 3, 4; Commercial Club 4; Speech Club  
3, 4; Choir 4; Annual Staff 4; Service Club 4; Tri-Hi-Y 4.

LARRY JORDAN

"Larry's jokes are not in vain,  
Soon he'll drive us all insane."

Baseball 1, 2, 3, 4; Basketball 3, 4; Hi-Y 2, 3, 4; Commer-  
cial Club 3, 4; Class Officer 1.

LYNNE SANTEN

"All year she's led us through  
As class President with a lot to do."

Choir 3, 4; Glee Club 1, 2, 3, 4; Parisianaires 4; Trio 4;  
Music Club 1; Beta Club 3, 4, Officer; Service Club 4;  
Annual Staff 4; French & Spanish Club 2, 3; Tri-Hi-Y 1, 4.

## Seniors



RONNIE MYERS

"What a piece of work is this man.

To have a date with him is any girl's plan."

Basketball 1, 2, 3, 4; Hi-Y 2; Baseball 2, 3, 4; Football 4;  
Service Club 4.

ROSEMARY BUTLER LUTES

"Who is this guy by the name of 'Gus'?

Over whom Rosemary makes such a fuss?"

Cheerleader 1, 2, 3, 4; Glee Club 1, 2, 3, 4; Latin Club  
2, 3, 4; Choir 3, 4; Trio 4; Service Club 4; Romance  
Language 3; Home Ec. 1, 2; Annual Staff 4.



TOMMY McMAHAN

"Doris and Tommy are quite a pair,  
With her he's always floating in air."

Basketball 1, 2, 3, 4; Baseball 3, 4; Choir 2, 3, 4; Latin Club  
2, 3, 4; Hi-Y 2, 3, 4; Annual Staff 4; Parisianaires 3, 4;  
Commercial Club 3.

CAROL MERRINGER

"Long, black hair, she's really a doll,  
She goes with a boy who plays basketball."

Junior Chorus 1; Choir 2, 3, 4; Glee Club 2, 3, 4; Latin Club  
2, 3; Tri-Hi-Y 2; Parisianaires 3, 4; Trio 3, 4; Romance  
Language Club 3; Service Club 4; Beta Club 4; Solo 4;  
Annual Staff 4; Commercial Club 3, 4; P. T. A. Queen 3;  
Valentine Queen Representative 4; Home Ec. 4.





PATTY SMITH

"If you're worried and you can't sleep  
Just call on Patty, our 'Little Bo Peep'. "  
Junior Chorus 1; Glee Club 2, 3, 4; Math Club 2; Latin  
Club 2; Tri-Hi-Y 2, 3; Romance Language Club 3; Speech  
Club 3, 4; Choir 4; Annual Staff 4; F. H. A. 4.

ALFRED VICKERS

"Alfred is his name but we call him 'Teeter'  
We are sure that no one could be sweeter. "  
Latin Club 2; Spanish Club 3; Jr. Hi Football Mgr. 1;  
Basketball Mgr. 1, 2; Varsity Football Mgr. 2, 3; Hi-Y 2.



NANCY McCONNELL

"A pretty face and a lot of charm,  
Nancy and Charlie go arm in arm. "  
F. H. A. 4; Commercial 3; Romance Language Club 3.

JERRY ROBIN

"Our Jerry is not a bird,  
But in Choir he can be heard. "  
Math Club 2; Latin Club 2, 3, 4; Band 1, 2, 3, 4; Choir 2,  
3, 4; Parisionaires 3, 4; Annual Staff 4; Band Officer 3, 4;  
Male Quartet 4; Brass Sextet 3, 4.

## Seniors

AVA MAE McCANN

"A lot of fun is our Ava Mae,  
She's sure to give you an exciting day. "  
Orange and Black 1; Junior Chorus 1; Home Ec. Club 1, 2;  
Latin Club 2; Math Club 2; Commercial Club 3, 4; Beta  
Club 3, 4; Speech Club 3, 4; Glee Club 3, 4; Tri-Hi-Y 4;  
Annual Staff 4; Service Club 4.

BILLY PURCELL

"Carol is the one Billy adores,  
Just watch him on that basketball floor. "  
Basketball 1, 2, 3, 4; Football 4; Hi-Y 2, 4; Romance  
Language Club 4; Commercial Club 3; Baseball 1, 2, 3, 4;  
President of Romance Language Club 4.

SHIRLEY JONES

"Tell us, tell us, tell us do,  
What on earth is troubling you?"  
Junior Chorus 1; Glee Club 2, 3, 4; Latin Club 2; Tri-Hi-Y  
2, 4; Commercial Club 3, 4; F. H. A. 4; Home Ec. 2, 4.

JACKIE MAYE

"Just look at Jackie amble along,  
Follow his steps and you'll never go wrong. "  
Parisian Circle 4.



Not  
Pictured



## Junior Officers



President . . . Larry Shriver  
Vice-President . . . Sue Ewalt  
Treasurer . . . Mariam Thomas  
Secretary . . . Kay George





# *Juniors*

Harry Archbold  
Anne Barnett  
Bill Cassidy

Susan Day  
Betsy Doyle  
Sue Ewalt

Betty Fields  
Jane Florence  
Kay George

Sara Hyden  
Paul Kendall  
Patty Leeds

Joe Manning  
Utevia Minyard  
Larry Myers



# *Juniors*

Anne Morris  
Carolyn Moore  
Billy Pitts



Bobby Ricci  
Jackie Riggert  
Emma Jean Shelburne



Lillard Shelley  
Bobby Joe Slack  
Johnny Stuart



Jane Toohey  
Marium Thomas  
Anne Thompson



Belle Brent Ward  
Larry Shriver  
Bill Adams





## *Sophomore Officers*



President . . . . David Crump  
Vice-President . . Tommy Watson  
Treasurer . . . . Rebecca Burnett  
Secretary . . . . Doris Ramey





# Sophomores

Judy Allen  
Donald Brown  
Rebecca Burnett



Russell Brunner  
Hazel Berry  
Judy Culbertson



David Crump  
Barbara Clough  
Le Roy Clark



Janice Carr  
Shirley Doyle  
Wilbur Dotson



Beth Davis  
Nellie Downing  
Barbara Eads





# Sophomore

Nancy Elvove  
Bill Ferguson  
Joyce Flynn

Woodrow Florence  
Charlene Florence  
Charlene Gaunce

Alice Gaunce  
Stanley Garrison  
Juanita Garrison

Lafayette Gant  
Rebecca Gaitskill  
Kent Gaitskill

Robert Hopkins  
Bill Hayes  
Ronald Harris



# Sophomores

Bobby Hudnall  
Sharon Jackson  
Elinor James



Billy Jefferson  
Janice Jones  
Martha Keal



Earlene Kenton  
Erva Jean King  
Gayle Lawrence



Joella Logan  
Joe Lyons  
Betty H. Lair



Larry McCord  
Jimmy McKinney  
Betty Million







## *Sophomores*

Martha Moore  
David O'Neil  
Betty Lee Oldson



Clyde Parsons  
Doris Ramey  
Larry Ransdall



Wynn Turney  
Betsy Talbot  
Michael Thornton



Tommy Turpin  
Betty Vandy  
Bill Whitelaw

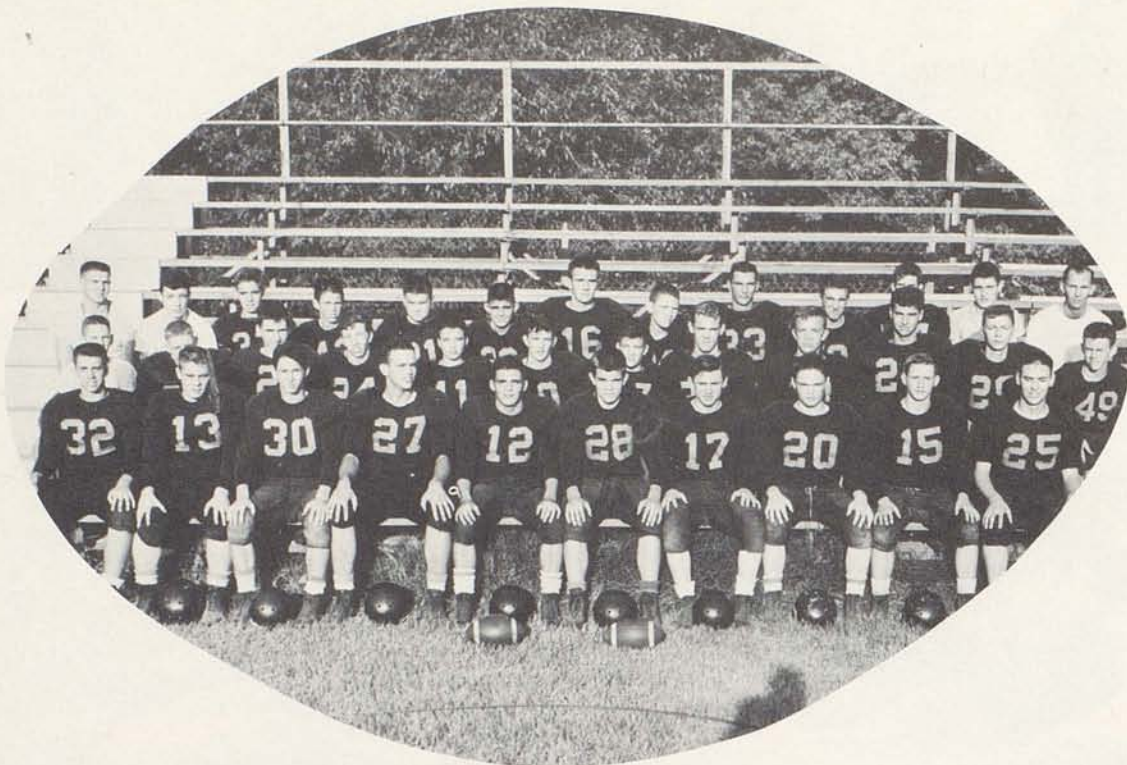


Frank Whalen  
Tommy Watson  
George Pennington  
George Wigglesworth



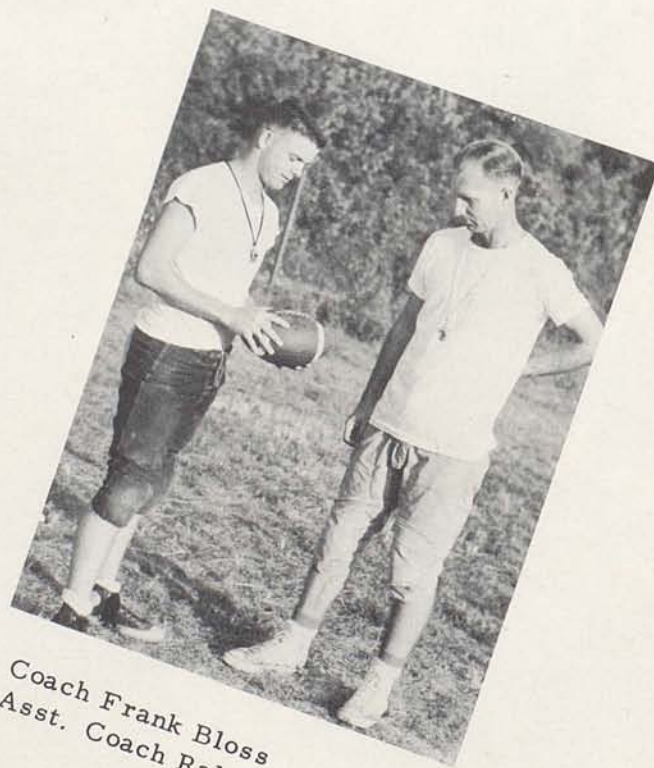






FRONT ROW: Tommy Belt, Billy Pitts, Billy Purcell, Vol Ferguson, Donald Beheler, Russell Kenney, Bill Cassidy, Johnny Stuart, Danny Jefferson, Larry Shriver. SECOND ROW: David Crump, Bobby Waugh, Billy Morris, Paul Kendall, Kent Gaitskill, Tommy Fullington, Bobby Gant, Donald Farris, Lafayette Gant, Bill Ferguson, Charlie Atkinson, Woodie Florence. THIRD ROW: Coach Bloss, George Pennington, Paul Snapp, Dave Parrish, Bob Letton, Joe Elvove, Bill Adams, Larry Ransdell, Ronnie Myers, Wesley Blythe, Winn Turney, Bobby Ricci, Coach Patterson.

## Football



Coach Frank Bloss  
Asst. Coach Ralph Patterson





Tommy Belt



Ronnie Myers



Tommy Fullington

*We Greyhounds!!*

*Football*



Billy Purcell



Donald Farris

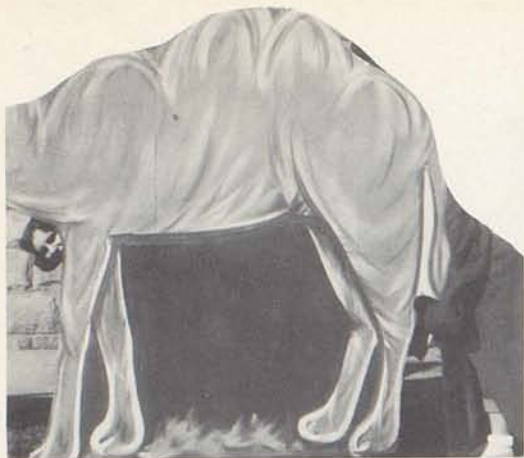


Donald Beheler



Charles Atkinson







# Junior High Officers



## NINTH GRADE

Mary Martin Taylor . . . . .	President
Bobby Gant . . . . .	Vice-President
Helen Eads . . . . .	Secretary
Martha Day . . . . .	Treasurer

## EIGHTH GRADE

Charlotte Boling . . . . .	President
Nettie Williams . . . . .	Vice-President
Linda Boling . . . . .	Treasurer
Mary Garrison. . . . .	Secretary

## SEVENTH GRADE

Billy Mizell . . . . .	President
Jimmy Wigglesworth. . . . .	Vice-President
Wilbur McCarty . . . . .	Secretary-Treasurer





ROLL: James Allen, Russell Bell, Wesley Blythe, Donna Boettcher, Tommy Bowman, Edmond Boyle, Susann Burnett, Billy Caywood, Joan Cooper, Annette Crossfield, Martha Day, Helen Eads, Archie English, Joe Elvove, Billy Farris, Larry Feld, Bobby Gant, Nancy Gardner, Carolyn Gaunce, Roy Gaunce, John Gay, Gordon Goode, Larry Gray, Dale Greer, Joe Hamrick, Beverley Hinkson, Mary Jo Hyden, Jimmy Jones, Phyllis Kendall, Carolyn Kenney, Leslie Lawrence, Robert Letton, Billy McCracken, Bill Morris, Clyde Morris, Donald Nichols, Novellia Nolen, Sonja Oldson, Dave Parrish, Melvin Puckett, Morrow Richards, Don Robertson, Betty Roe, Marilyn Sadler, Ralph Shelley, Leslie Smith, Ennis Smits, Barbara Sowards, Barbara Stevens, Sandia Strickler, June Stivers, Beverley Taylor, Mary Martin Taylor, Jean Thompson, Zereda Thompson, Mildred Turpin, Charles Watson, Bobby Waugh, Johnny Wilson, Floyd Withrow, Patty Page Woodford, Betty Zapolsky.

## *Freshman Class*

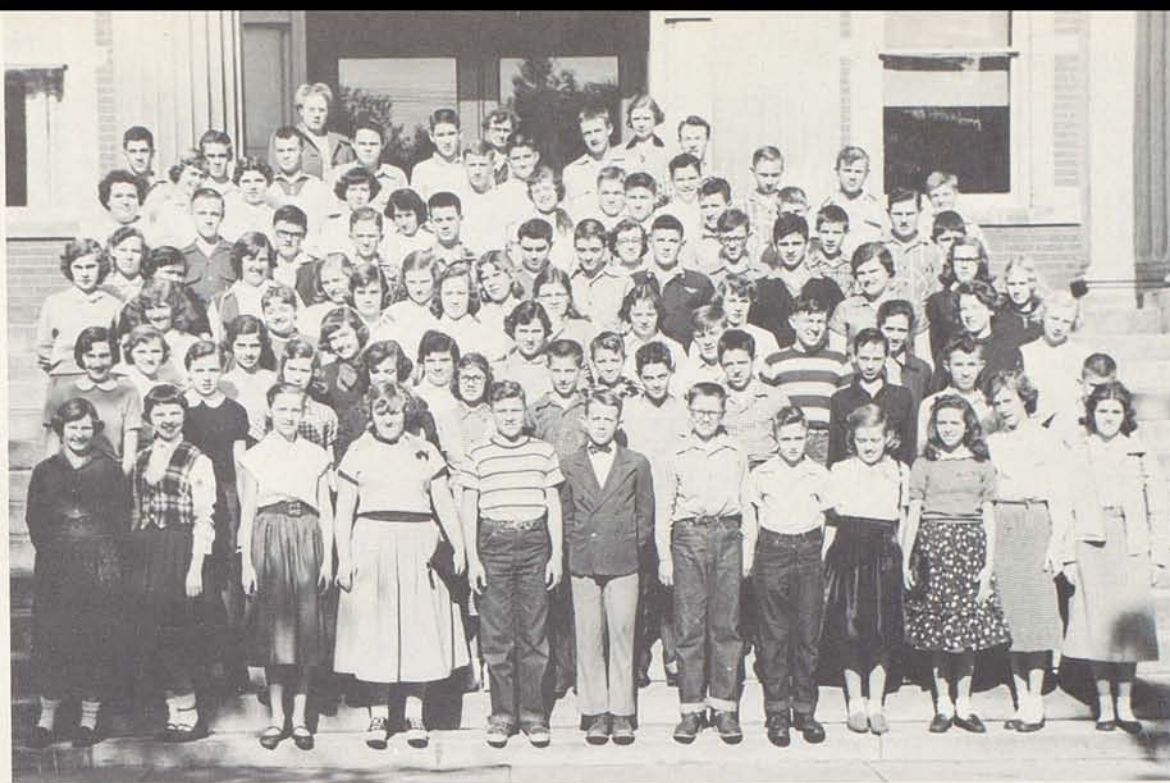
### Freshman Memories

We are looking forward to entering Senior High. However, there are many pleasant memories which we hold for Junior High. We remember and appreciate the help our home room teachers, Miss Hunter and Mr. Davis, gave us. There was the thrill of seeing our candidate, Donna Lou Boettcher, crowned queen of the PTA Carnival. We are proud of the efforts our boys made in the athletic field. Our appreciation also goes to the excellent job our three cheerleaders, Sonja Oldson, Patty Page Woodford, and Barbara Sowards, did. One of our Freshman girls, Helen Eads, had the privilege of serving as a majorette.

Betty Zapolsky, Billy Caywood, Jean Thompson, Patty Page Woodford, Sonja Oldson, and Morrow Richards represented our school in the speech contest at Richmond.

One of the things the members of our class enjoyed most of all was putting on two one-act plays. Putting all these things together, we feel that we have had a very successful Freshman year and are now ready for Senior High.





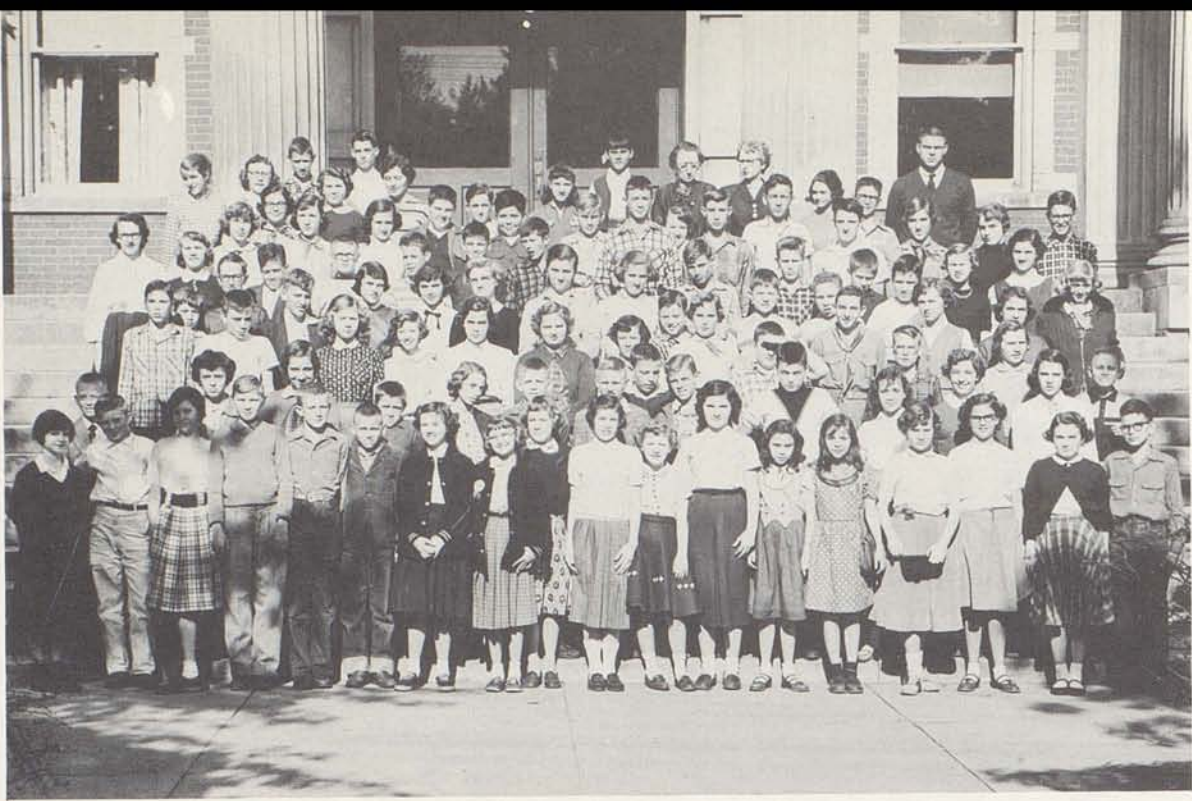
ROLL: John Adams, Eleanor Ardery, Betty Arnold, Nancy Arnold, Jane Arnsparger, Billy Baber, Betty Bailey, Boone Baldwin, Barbara Bean, Jane Bishop, Charlotte Boling, Linda Boling, Eddie Breeze, Betty Brunner, Shirley Buchanan, Tommy Buckner, Frances Burnett, Ralph Carpenter, Bobby Cassidy, Carl Cassidy, Emma Charles, Robert Charles, Barbara Cobb, Richard Conley, Edwin Conyers, Charlotte Crouch, Donald Crump, Ronald Dailey, Charles Day, Rose Day, Phyllis Dotson, Shirley Dray, Louis Elvove, Henry Everman, Mary Ewalt, John Farris, Stanley Frederick, Georgia Fredrick, Benny Fugate, Mary Garrison, Carol Gaunce, Jack Grey, Micky Hollar, Patricia Hudnall, Peggy Humphrey, Danny Jefferson, John Johnson, Sally Jones, Ruby Jones, Judith Jordan, Wayne Jordan, Carol Kelly, Alice Lawrence, Bobby Linville, Emma Logan, Bill Lucky, Virgil Lyons, Hugh Marshall, Elizabeth McCann, Eleanor McDaniel, Norma Mers, James Miller, Reginald Monson, James Morris, Barbara Myers, Lillian Nolen, Jerry Ornes, Phyllis Osborne, William Owens, Hunter Pipes, Rose Plummer, Nora Puckett, Roy Puckett, Lee Renfrew, Robert Sanders, Earl Saylor, Jack Shout, Roger Sledd, Paul Snapp, Eleanor Stanfield, Dolly Waugh, William Weaver, Joe Wells, Otis West, April Williams, Nettie Williams, Roger Withrow, Betty Zornes.

## *Eighth Grade*

Our Eighth Grade has been wonderful this year, thanks to our wonderful teachers, Miss Lovell, Miss McClintock and Miss Mitchell. We have enjoyed this year and have helped the Red Cross, the Polio Drive and the drive for T.B.

We are proud of Edwin Conyers, Jackie Elvove, Jack Guy, Danny Jefferson, Hunter Pipes and Roger Sledd, who represented the Eighth Grade on the Jr. High Basketball Team. Our cheerleaders were Barbara Bean, Charlotte Boling, and Linda Boling. Eleanor Ardery represented the Eighth Grade at Richmond in the Speech Contest.





ROLL: Bonnie Adair, Janice Allen, Brenda Sue Arnold, James Bailey, Carroll Baldwin, Melvin Ballard, Jeffrey Bell, Herbert Bennett, Calvin Berry, Linda Biddle, Donna Bixler, Monte Bixler, Wand Blake, Jack Carr, Ralph Cassidy, James Christopher, Peggy Clifford, Harlene Coldiron, Lois Cummins, Fred Dray, James Eads, Betty English, John English, Bonnie Florence, Joyce Flynn, Charles Frederick, Robert Gardner, Len Garrison, Patricia Garrison, Janice Gaunce, Robert Gaunce, Linda Haddix, Ann Haley, Louise Herndon, Donald Hines, Ralph Humphrey, Varnon Hutchcraft, Patricia Insko, Carey Jefferson, Jerry Jones, Beverley Jordan, Kenneth Lawson, Peggy Long, John Leach, Wilburn McCarty, Marvin McCord, Lawrence McFarland, Betsy McKinivan, Judy McNees, Judith Mastin, John Meringer, James Million, Carolyn Mitchell, Billy Mizell, Eleanor Morgan, Barbara Moore, Betty Morris, Mary Nell Moss, Robert Myers, Patsy Ormes, Tom Parrish, Phyllis Planck, Jack Plummer, Pauline Puckett, Phyllis Puckett, William Puckett, Linda Ratcliff, Betsy Reynolds, Sue Ellen Riggert, Phyllis Roe, Don Roe, Jackie Ryan, Leonard Saylor, Ruth Saylor, Ann Shaw, Dianne Shelburne, Ruth Smart, Donald Smith, Lillian Marie Smith, Ada Snowden, Merrill Snowden, Bonnie Spegal, Carole Sumpter, Tommy Talbot, Mary Gay Taylor, Melinda Tucker, Donna Turner, Danny Vandy, Marshall Van Meter, Bonnie Vickers, Rodney Waugh, Marion Wells, Carol Whalen, Pattie White, James Wigglesworth, Ada Wilson, Stephen Wills, Barbara Withrow, Theodore Woolwine.

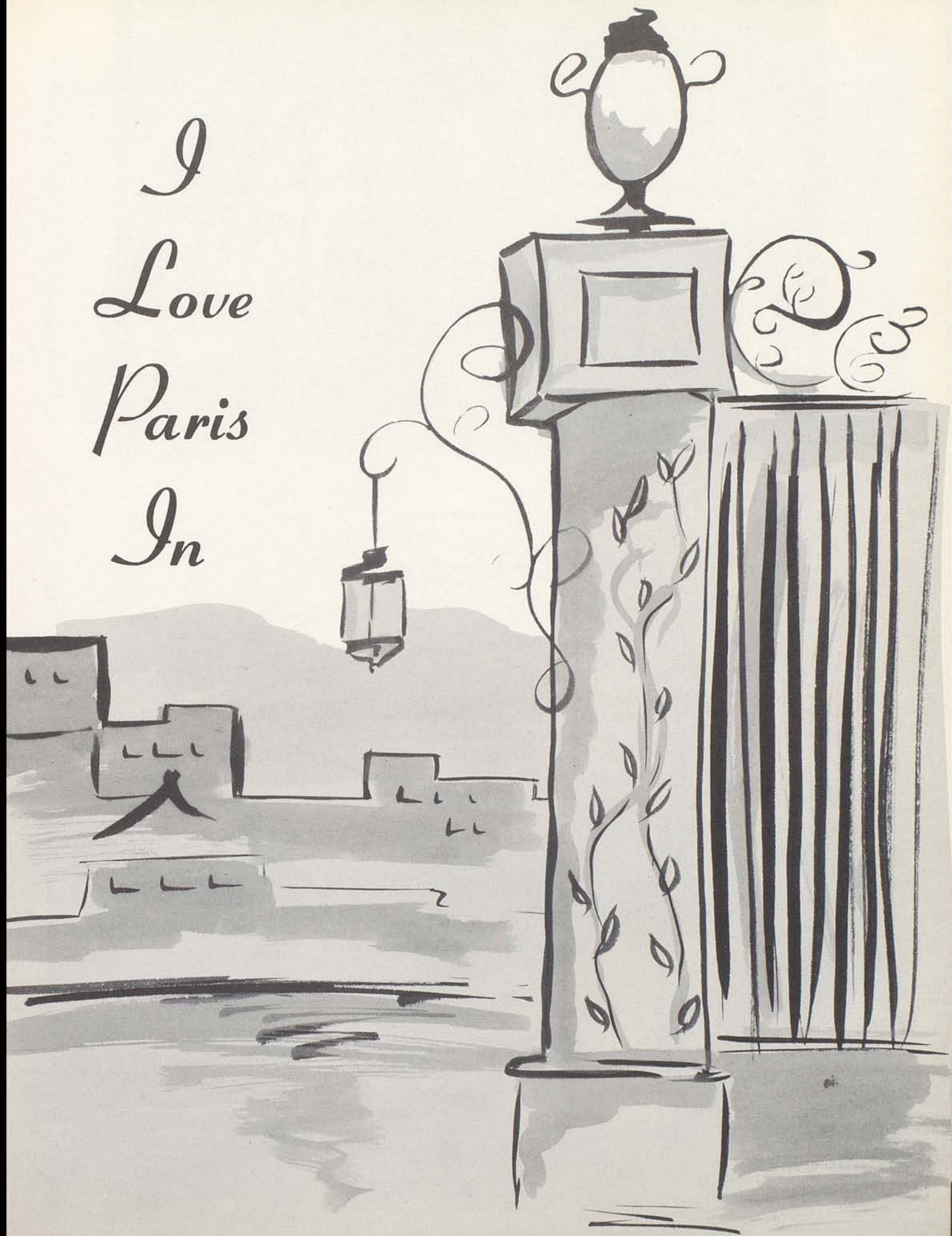
## *Seventh Grade*

The Seventh Grade is composed of three homerooms. The teachers are Mr. Bloss, Miss Purnell, and Miss Purcell. We are fortunate in having Miss Mitchell and Mr. Davis as teachers also. Our Seventh Grade President is Billy Mizell; Vice-President is Jimmy Wigglesworth; Secretary-Treasurer is Wilburn McCarty. Our cheerleaders are Sue Ellen Riggert and Beverley Jordan. We also have a Junior "Sports" team. We're the youngest and silliest bunch of Junior High!!

C. Baldwin



*I  
Love  
Paris  
In*







## Basketball

### SEASON'S RECORD

Paris . . .	57	Carlisle . . .	33
Paris . . .	49:47	Harrison Co. . .	34:46
Paris . . .	57:61	Winchester . . .	53:64
Paris . . .	70	M. M. I. . . .	22
Paris . . .	50	Maysville . . .	51
Paris . . .	66:82	Cynthiana . . .	40:41
Paris . . .	36:56	Bourbon Voc. . .	48:58
Paris . . .	58:55	Georgetown . . .	65:53
Paris . . .	40	Lou. Manual . . .	47
Paris . . .	62:53	Clark Co. . . .	53:50
Paris . . .	57:67	Mt. Sterling . .	56:47
Paris . . .	66	Nicholas Co. . .	57
Paris . . .	59	Bracken Co. . .	54



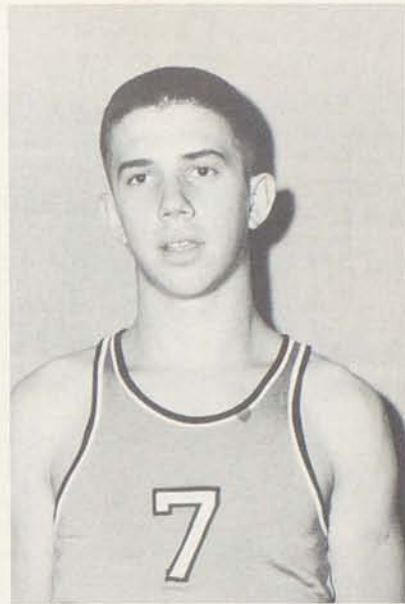




Tommy McMahan



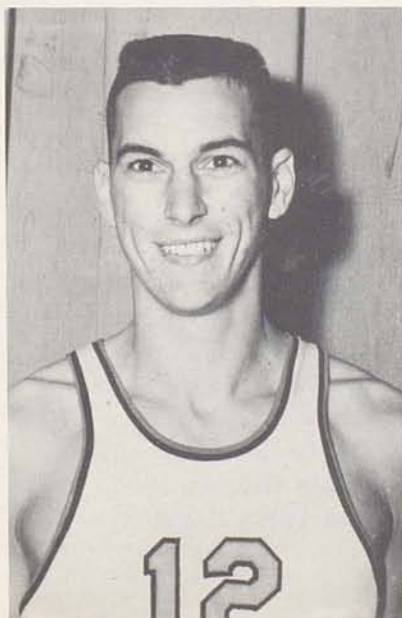
Billy Purcell



Tommy Belt

## *Basketball*

Ronnie Myers



Donald Beheler

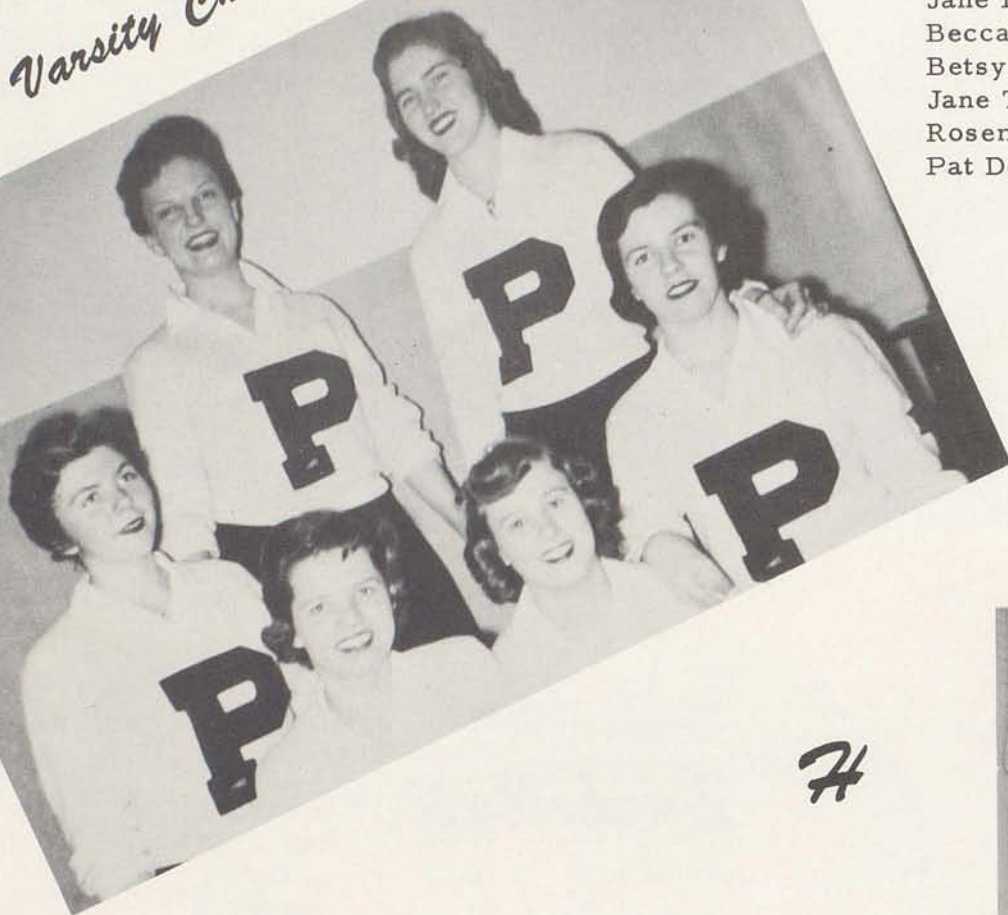


Larry Jordan





*P*  
*Varsity Cheerleaders*



Jane Florence  
Becca Gaitskill  
Betsy Talbot  
Jane Toohey  
Rosemary B. Lutes  
Pat Dotson

*Mascot*



Sandy Sowards

*H*

*S*

*Jr. High Cheerleaders*



Pattie Page Woodford  
Linda Boling  
Barbara Bean  
Barbara Sowards  
Charlotte Boling  
Barbara Estes  
Sonja Oldson  
Sue Ellen Riggert





## Baseball

### SEASON'S RECORD

Paris . . . . 9	Carlisle . . . . 5
Paris . . . . 3	Nicholas . . . . 6
Paris . . . . 1	Winchester . . . . 3
Paris . . . . 6	M. M. I. . . . . 7
Paris . . . . 5	Harrison Co. . . . 3
Paris . . . . 2	Georgetown. . . 10

### District Tournament

Paris . . . . 15	Bourbon Voc. . . . 4
Paris . . . . 3	Nicholas Co. . . . 0
Paris . . . . 4	Harrison Co. . . . 6
Paris . . . . 3	Cynthia . . . . 9
Paris . . . . 4	Georgetown. . . . 6











## *Choir*

DIRECTOR: Thomas A. Siwicki



## *Glee*

PARISIANAIRES



## *Club*



# Band



DIRECTOR . . . . THOMAS A. SIWICKI  
 SPONSOR . . . . SANDRA CONNELL  
 DRUM MAJORETTE . . BARBARA JONES

MAJORETTES:  
 SHIRLEY STANFORTH  
 BILLYE JO HARNEY  
 ROSE CAROL SHUMATE  
 SUE EWALT  
 ERVA JEAN KING  
 BETSY TALBOT  
 SHARON JACKSON  
 CHARLENE FLORENCE  
 HELEN EADS

# Majorettes







# Beta Club



SPONSOR  
Miss Gilbert Lavin

MOTTO  
Ducamus aliis  
serviendo  
(Let us lead by  
serving others)



President . . . Jimmy Greer  
Vice-President . . . Sandra Connell  
Secretary . . . Ava Mae McCann  
Treasurer . . . Lynne Santen





# Tri Hi-Y



SPONSOR: Mrs. Duke Young

Barbara Jones . . . . President  
Jane Toohey . . . Vice-President  
Jane Florence . . . Secretary  
Bettie Hall . . . . Treasurer



# Hi-Y



Tommy Fullington . . . . President  
Ronald Myers . . . . Vice-President  
Bobby Slack . . . Secretary  
Tom Belt . . . Treasurer  
Tommy McMahan . . . Chaplain  
Sergeant at Arms . . . .  
Bill Ferguson







## *Future Homemakers of America*



SPONSOR: Mrs. Scott



OFFICERS



## *Service Club*



FIRST ROW: Shirley Stanforth, Bertha Myers, Nancy Ballard, Jean Harney, Jill Nolan. SECOND ROW: Charlotte Waugh, Barbara Jones, Sandra Connell, Alice Langfels, Joyce White, Bettie Hall. THIRD ROW: Carol Merringer, Ava Mae McCann, Marilyn Elvove, Pat Dotson, Lynne Santen, Marilyn Hurst. FOURTH ROW: Ronnie Myers, Jimmy Greer, Tommy Belt, Dabney Johnson.

## *Parisian Circle*



FIRST ROW: Judy Allen, Belle Brent Ward, Ann Thompson, Pat Dotson, Jane Florence, Jean Harney. SECOND ROW: Dabney Johnson, Jimmy Greer, Larry Shriver, George Wigglesworth.



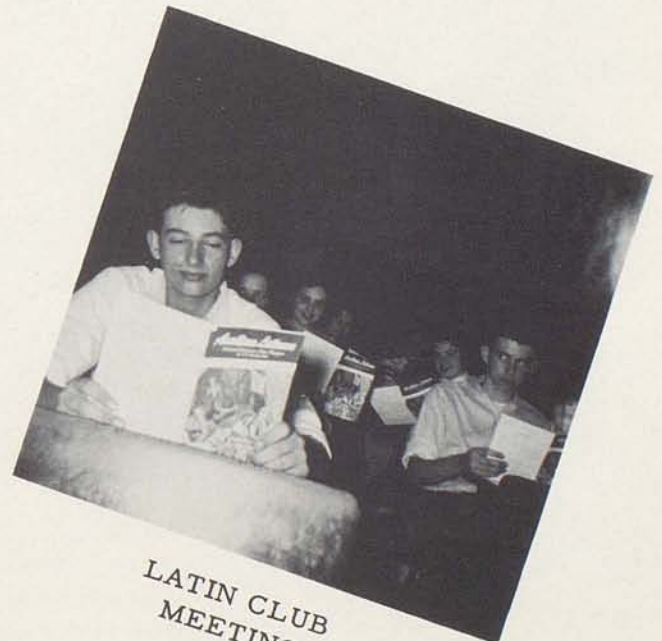
# Latin Club



SPONSOR . . . . .	Miss Gilbert Lavin
PRESIDENT. . . . .	Rosemary Lutes
VICE-PRESIDENT . . . . .	Jimmy Greer
SECRETARY . . . . .	Pat Dotson
TREASURER . . . . .	Tommy McMahan
REPORTER. . . . .	Judy Allen



OFFICERS



LATIN CLUB  
MEETING



# *French-Spanish Club*



SPONSOR: Miss Betsy Brooks Woodford

## OFFICERS



Bill Purcell.	. . . . .	President
Emma Jean Shelburne	. . . . .	Vice-President
Kay George.	. . . . .	Secretary
Susan Day	. . . . .	Treasurer



# Speech Club



SPONSOR: Miss Zerelda Noland

## N. F. L. MEMBERS

Anne Thompson  
 Marium Thomas  
 Jane Toohey  
 Patty Leeds  
 Jane Florence  
 Sue Ewalt  
 Betty Hewitt Lair  
 Sandra Connell  
 Jean Harney  
 Anne Barnett  
 Belle Brent Ward  
 Harry Archbold



Ann Thompson . . . . President  
 Jane Florence . . . Vice-President  
 Jane Toohey . . . . Secretary



# Activities



Christmas Music Program

Paris Skit  
Beta Club Convention



Lettermen

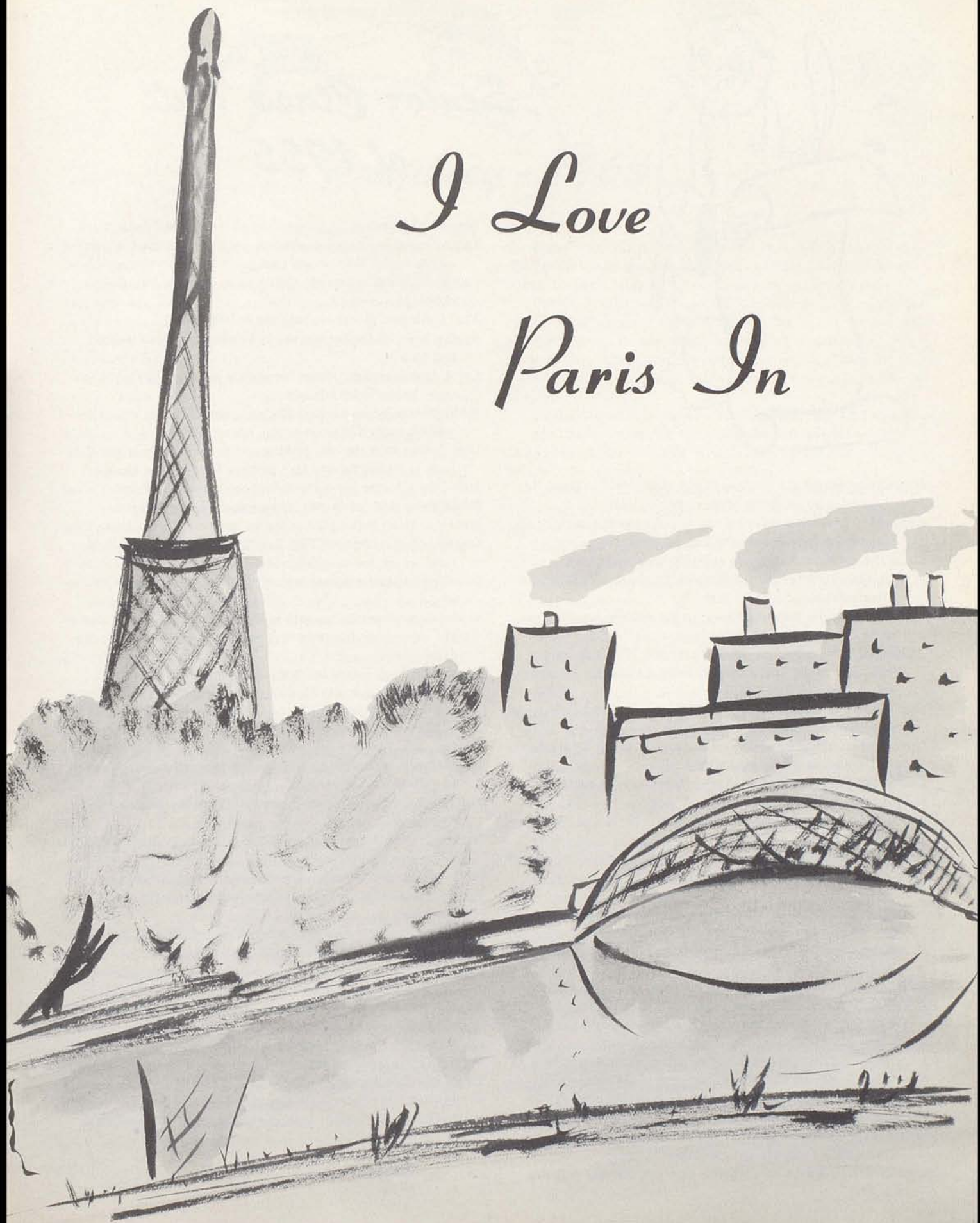
Tri-Hi-Y & Hi-Y Christmas Float



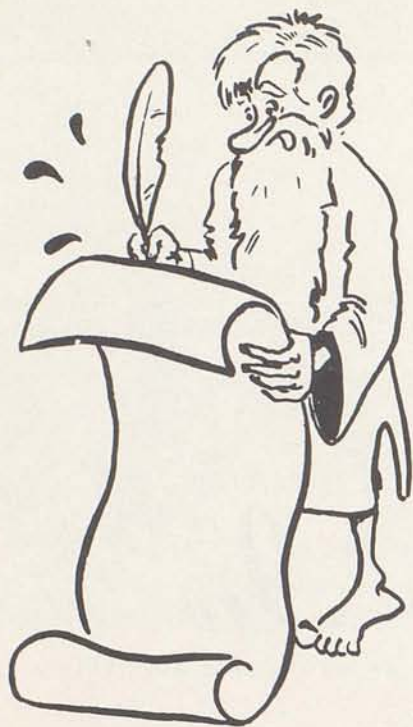


*I Love*

*Paris In*







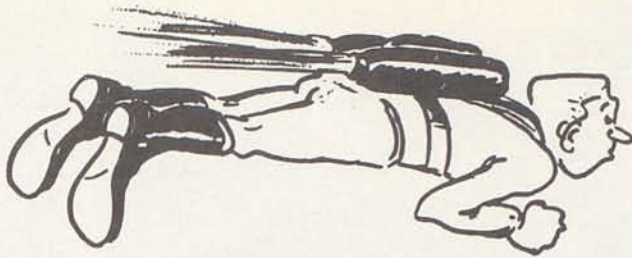
## Senior Class Will of 1955

Jean Harney leaves her quiet ways and smart brain to Susan Day.  
 Patty Smith leaves her horse laugh to Betty Fields.  
 Rosemary Lutes leaves behind a trip to Jeffersonville similar to the one she took this year to Janice Jones.  
 Linda Nolan Leaves Miss Lavin and Miss Woodford alone.  
 Marilyn Elvove leaves her ability to call cows to attract all the Vocational boys to Hazel Berry.  
 Margaret Anderson leaves her love for the college boys to Jane Toohey.  
 Allison Driscoll and Billy Collier leave their ability to have a good time on the Senior Trip to Harry Archbold and Larry Shriver.  
 John Willie Crump leaves his role in the Senior Play as a wonderful father to Paul Kendall.  
 Jimmy Greer leaves his ability to be called "daddy" to any boy who may enter the Beta Club next year.  
 Dennis Spivey leaves his job of being Miss Noland's janitor to Joe Manning.  
 Tommy McMahan says the best thing is that he is just leaving for good.  
 Nancy Ballard leaves her pony tail to Miss Noland.  
 Jerry Robin leaves a lot of interest in Junior High to Jimmy McKinney.  
 Charlie Atkinson leaves his ability to sleep during classes and his spot at Rusty's to Tommy Turpin.  
 Volney Ferguson leaves his short stature and his funny laugh to Larry Ransdell.  
 Bobby Taylor wills his beautiful handwriting to Lonnie McCord.  
 Joyce White leaves her shyness to Rebecca Bumett.  
 Ava Mae McCann leaves her empty gas tank to Pattie Leeds.  
 Alice Langfels wills her ability to cut up in all of Mr. Kring's classes to Betsy Doyle and her ability to blush to Ann Morris.  
 Roy Parker leaves his Cadillac convertible to Bib Kenney.  
 Ronnie Myers leaves his ability to be the biggest flirt in Senior High to Bobby Joe Slack.  
 Jackie Maye leaves his ability to go around beating on someone, usually some innocent girl, to Lillard Shelley.  
 Donald Beheler leaves his ability to be a football star to Junior Cassidy.

Bertha Myers leaves her job in the cafeteria to Bell Brent Ward.  
 Lynne Santen leaves her charm and personality to hook a man on the Senior Trip to Kay George.  
 Shirley Stanforth leaves her ability to be smart in Mr. Kring's classes to Sue Ewalt.  
 Tom Fullington leaves his baritone to Jeffrey Bell.  
 Shirley Jones leaves her interest in Mackstown Dance Hall to Red Morris.  
 Carol Anne Merringer leaves her ability to scare Miss Isgrig with queer noises to Erva Jean King.  
 Bobby Dotson leaves his job of being a taxi cab from school to Arderys every afternoon to Bill Adams.  
 Larry Jordan wills the best parking spot in the county on the T. B. Lane to Johnny Stuart. May he have happy times forever.  
 Jane Turpin leaves her curvacious shape to Betty Millon.  
 Bettie Bruce Hall leaves twenty pounds to Sharon Jackson.  
 Janet Sue Shout is just glad to leave, most certainly a certain boy.  
 Marylyn Hurst wishes you luck Judy Culbertson, on catching any man, as she has caught her Morehead man.  
 Rose Carol Shumate leaves her ability to be tardy to Ann Thompson.  
 Sandra Connell leaves her seat in Physics class to Carolyn Moore and also her ability to have a good time in that class as she did this year.  
 Charlotte Waugh leaves her interest in Fords to Martha Keal.  
 Tommy Duke Belt leaves his ability to be chased by some daring girl to Bobby Ricci.  
 Billye Jo Harney leaves her ability to get engaged to Betty Hewitt Lair.  
 Donald Farris leaves his kind and gentle manner of being nice to his girl to Winn Turney.  
 Billy Purcell leaves his spot on the basketball team to George Pennington.  
 Dabney Johnson leaves Earleen behind which he dislikes and so does she.  
 Junior Warren leaves his seat in the band to Rodger Sledd.  
 Barbara Jones leaves her ability to be a "real smooth" number in the Senior Play to Marium Thomas.  
 Nancy McConnell leaves her ability to be a surprise or shall we say shock to the whole school to Jane Florence.  
 Betty Buckler leaves her ability to only have to attend classes half a day to Becca Gaitskill.  
 Alfred Vickers leaves his ability to smoke at "Goodies" across the tracks to Larry Myers.  
 Pat Dotson leaves all the piano keys at Paris High to Sissy Hydon and Emma Jean Shelburne.  
 To all the Underclassmen we say "goodbye" and all of us will miss you next year in one way or another.  
 To the Faculty we leave a sincere "thank you" for all you have meant to us and what you have done for us.

Now, we, the Senior Class of 1955, just leave.





## Prophecy - 1965

Mrs. James McCarty, former Miss Charlotte Waugh, is now helping her husband run his new service station which is located on 4th street.

Miss Marilyn Elvove and her husband Clyde now own their own farm and recently they entered their favorite cow "Moo Moo" in the State Fair, winning a blue ribbon.

Dabney Johnson finally succeeded in becoming the head boss of Hancock farm.

After all these years, ARDERYS' DRUG STORE now has a new owner--Bobby Dotson.

Alfred Vickers finally got married. He has a very pretty wife. She's six feet five inches tall, has blond hair, and green eyes. They now have two sets of twins.

Junior Warren is now employed by Benny Goodman. We all knew that Junior and his trumpet would go places.

Lynne Santen is now working for C&O Railroad as assistant ticket agent.

Mrs. Betty Maxwell Buckler is now manager of J.J. Newberry in Paris.

Roy Parker is now running his own service station in Lisaville.

Jerry Robin is now employed by Digger O'Dell, the friendly undertaker. He took the advice of his aptitude test in 1955.

Patty Smith is employed by Mr. & Mrs. Donald Farris. Janet (Shout) says Patty is a wonderful nurse for their eight children.

Mr. & Mrs. Billy Purcell are the only people in Paris to have a gymnasium in their home. They built it for their five sons.

Bobby Taylor is the new owner of "Rusty's Pool Room."

Bertha Myers, who was always the quiet one of the class, shocked us all by becoming one of the top T.V. comedians.

Jimmy Greer knocked Boris Karloff out of a job---his next movie is "Frankenstein's Grandmother."

Since Miss Noland retired from the English department of Paris High, Miss Jean Harney has taken her place, and is now busy directing the Senior play, "Rougher and Dumber."

Charlie Atkinson finally fulfilled his lifetime ambition. He's now rated as Paris's best street cleaner.

Mrs. Gayle Bowen (former Miss Marylyn Hurst) who always had trouble with Algebra doesn't have to worry any more. She has some one now who knows all the answers.

Tommy Duke Belt is doing fine with his new job as coach of the Kentucky Wildcats.

Billy Collier and Allison Driscoll are now employed by the C&O Railroad as guides for Senior trips.

Tommy Fullington's first song, "I Want What I Want When I Want It" almost reached the top. But his latest release, "I Got What I Got When I Got It" is bound to break all records.

Mrs. Alice Wigglesworth Hudnall is the wife of the famous professional basketball star, "Hotshot" Hudnall.

Margaret Anderson, who was always interested in Post Office work finally succeed in becoming head post mistress of Ford

Mill's Post Office.

Nancy McConnell now has her own beauty shop. Her most regular customers are Alice Langfels and Nancy Ballard who recently bought a farm on Vimont Lane next to the Judy farm.

Donald Beheler finally succeeded in becoming the worlds best typist. He says most of the credit goes to his former teacher, Mr. Raymond Kring. He now averages 200 words a minute.

Rosemary Butler Lutes is a very happy woman. Since her husband's return in 1958 there have been two additions to the family.

Sandra Connell has started a summer resort on "Still Mountain."

Mrs. Larry Jordan (the former Pat Dotson) and her husband Larry have started their new home located on the road that runs up by the T.B. Hospital.

Vol Ferguson is still a bachelor but he has been rated as best kisser ever since the time he fell flat on his face after kissing a girl at a party in '55.

Bettie Bruce Hall just won the election for the presidency of the "Lonely Hearts Club" founded in 1958.

Billye Jo Harney is really up in the air. She is now working for Eastern Airlines.

Shirley Jones is now owner and operator of Mackstown.

Jackie Maye is now pulling K.P. duty in some nice army camp. He wakes the whole camp every morning by beating out a tune on the garbage cans.

Ava Mae McCann has just won the title of Worlds Heavyweight Womens Wrestling Champion.

Mrs. Jimmie Myers (the former Miss Rose Carol Shumate) now owns her own dress shop in Paris.

Dennis Spivey is now a famous person. He was the inspiration for a new comic strip "The Older Brother of Dennis the Menace."

Shirley Stanforth is kept busy being a good wife to Billy Tabbott.

Jane Turpin and Russell, her husband, won the Kentucky Derby this year. They have a nice race horse farm.

Tommy McMahan has knocked Nat King Cole out of a job. He is rated as one of the world's best crooners.

John Willie Crump just won the Academy Award for portraying the father in the hit play "Smarter and Smoother."

Mrs. Dickie James (the former Barbara Jones) and her husband are spending their 10th wedding anniversary at the famous vacation spot the Country Club overlooking the beautiful Stoner Creek.

Ronnie Myers is still a bachelor. He has now started his own fan club. It was in the newspaper that all girls are welcome to join.

Linda Jill Nolan and her husband William are now directors of Cedarmore Camp near Bagdad.

Joyce White Hicks is now a woman "bobby" in London, England. Her husband Jack is stationed in England with the Air Force.



'THE FIRST TIME I SAW PARIS'



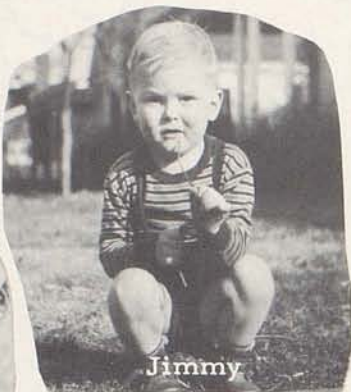
Janet



Jerry



Bobby



Jimmy



Alice



Sandra



Shirley



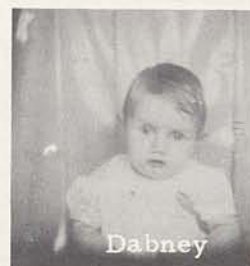
Bill



Vol



Donald



Dabney



Billy P.



Carol



Margaret



Patty



Jane



Billy C.



Rosemary



Shirley



Nancy



Jean



Marilyn





Tommy F.



Skeeter



Rose Carol



Ava Mae



Betty B.



Lynne



Bobby D.



Betty H.



John Willie



Alice W.



Pat D.



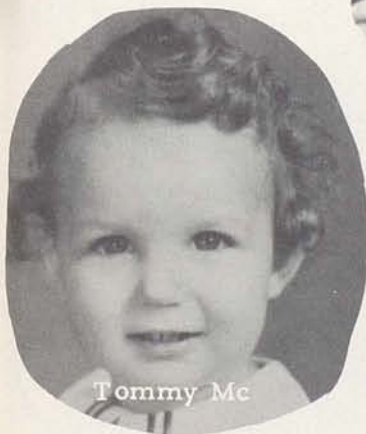
Bertha



Dennis



Roy



Tommy Mc



Billye Jo



Larry



Nancy Mc



Jackie



Charlotte



Marilyn H.



Joyce



Barbara

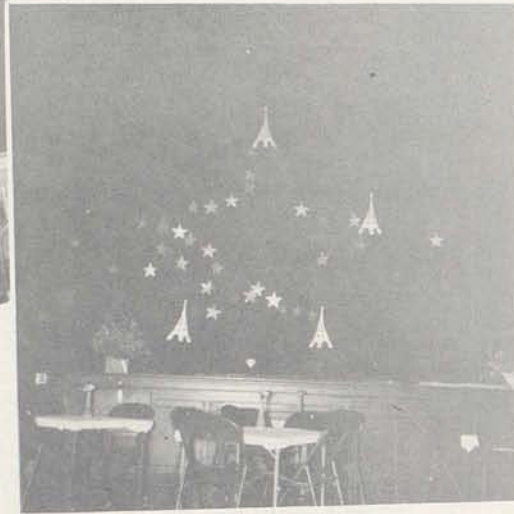


Tommy B.



EVENING IN PARIS

## *Junior-Senior Prom*



The Junior Class  
of the  
Paris Senior High School  
invites you to its  
Reception and Dance  
Friday, June 3, 1955  
Southside Gym. 9 to 12



"YOU'LL NEVER  
WALK ALONE"



# Senior Play



## SMARTER AND SMOOTHER



Miss Lewis--  
"Dear Iris---"

Iris--  
"Well, let's see  
--Dear Greeneyes--"



PARIS HIGH PLAY SEEN AS LAUGH HIT  
"Mirth filled throughout, the play brought much laughter and applause from the enthusiastic and appreciative audience, made even more so by the professional-like presentation of the comedy."

"Mel Allen--  
Sports Editor?"



Phil--  
"You wanted  
to see me?"

Mr. Baldwin  
"Pardon me!"



Mrs.  
Baldwin--  
"Wesley,  
you're a  
darling."



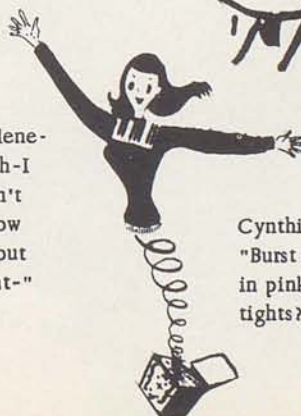
Cathy--  
"I'll  
certainly  
never be  
smooth--"



Larry--  
"Come on  
kid--"  
Sandy--  
"Just a  
minute  
super-  
speed--"



Arlene--  
"Oh-I  
don't  
know  
about  
that--"



Cynthia--  
"Burst out  
in pink  
tights?"





# Class Night



I'LL SEE YOU AGAIN-----



Rosemary Lutes--History



Pat Dotson--Class Will





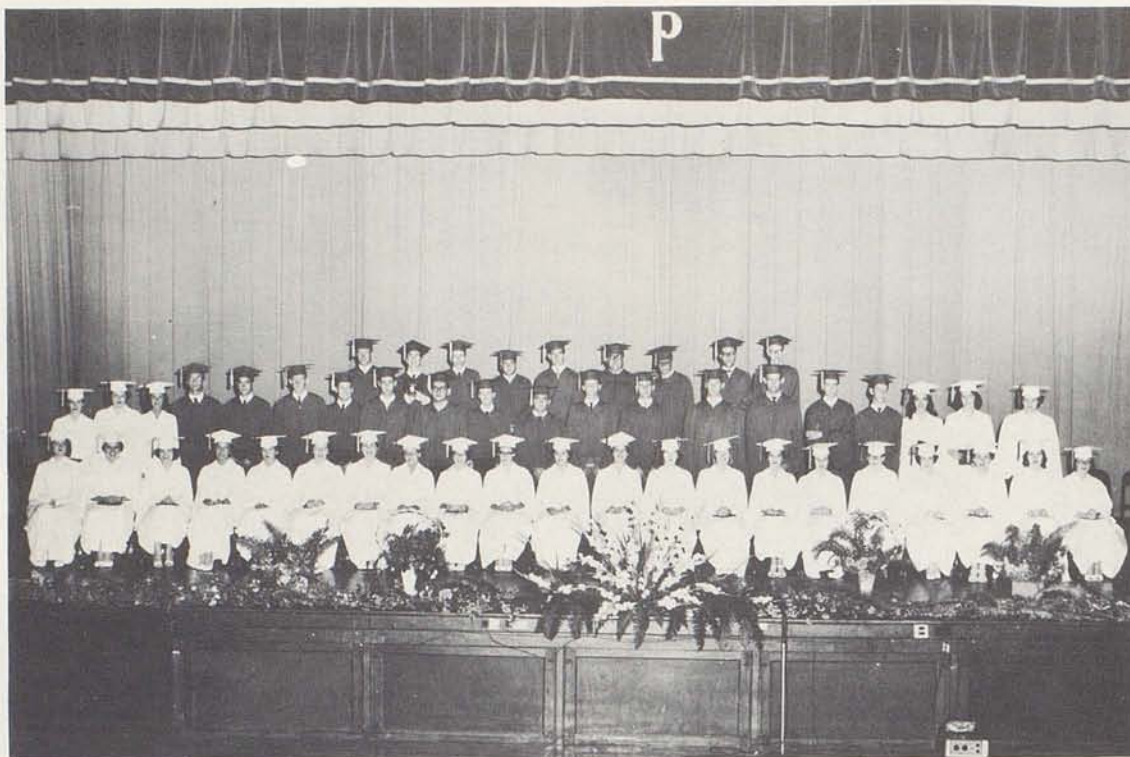
## Washington



## Trip







GRADUATING CLASS OF 1955

## *Graduation*

COMBINED CHORUS AND BAND







Mr. F. M. VanMeter, Chairman of the Board of Education, presenting the diploma to Lynne Santen, President of the Senior Class of 1955.

#### COMMENCEMENT EXERCISES

PROCESSIONAL . . . . .	Paris High Concert Band
INVOCATION . . . . .	Rev. F. Gault Robertson
MUSIC . . . . .	Paris High Concert Band
ADDRESS TO GRADUATES . . . . .	Dr. Lyman Ginger
PRESENTATION OF AWARDS . . . . .	Mr. Donald H. Fair
PRESENTATION OF DIPLOMAS . . . . .	Mr. F. M. VanMeter
	Supt. William F. Russell
MUSIC . . . . . "Born to be Free" . . . . .	Paris High Concert Band
	Combined Choruses
BENEDICTION. . . . .	Rev. J. Perry Cox
RECESSIONAL . . . . .	Paris High Concert Band





# Alumni Banquet



RADIO LAND---WPAR



"THIS TRAIN"



"I WANT WHAT I WANT  
WHEN I WANT IT"



"FALLING IN LOVE"



"DEEP PURPLE"





Compliments

of

**BOBBITT AND HUDSON**



Best Wishes

from

**HANSLEY MILLS**

"A Good Place To Work"

Compliments

of

**BOURBON AGRICULTURAL**

**BANK AND TRUST CO.**







Sell Your  
Tobacco  
at  
THE FARMER'S TOBACCO  
WAREHOUSES  
Phone 422

Compliments  
of  
ELECTRIC STEAM  
RADIATOR  
CORPORATION  
Paris, Kentucky



Compliments to  
The Senior Class  
THE PARIS ROTARY CLUB

Compliments  
of  
BOURBON HATCHERY  
S. Harney, Owner  
Phone 1014  
Paris, Ky.



BOURBON LUMBER CO.  
INCORPORATED  
Building Headquarters  
122 - Phone - 125

Known for Better Values  
LERMAN BROS.  
Cash Department Store  
Paris-----Kentucky





Compliments  
of  
BOND CLEANERS

R. L. FILER AUTO BODY SHOP  
Dependable Auto Painting  
Upholstering and Body Service  
"We take the dents  
out of accidents"  
130 W. Eighth Street

Compliments  
of  
JACKSON RADIO SHOP  
Radio and Television Service

Compliments  
of  
FORD & COMPANY

Compliments  
of  
S. M. RICKMAN, M.D.

PEOPLES DEPOSIT BANK  
AND TRUST COMPANY  
"This Bank appreciates  
your patronage"

DAUGHTERY PAINT & SUPPLY  
D. T. McCracken & Son  
Paint and Wallpaper  
Glass-Also Storm Sash-Doors  
434 Main Phone 231  
Paris, Ky.

Compliments  
of  
GRAY'S BARBER SHOP  
338 Main St.



Compliments  
of  
VOGLER-REXALL DRUG CO.  
Phone 6 Paris, Ky.

JOSEPHINE'S BEAUTY SHOP  
Phone 704-J  
Dr. W. W. Seltzer  
Chiropractor  
Phone 704-R  
721 Main St. Paris, Ky.

J. K. GREER  
Jeweler & Optometrist  
604 Main St. Paris, Ky.

Compliments  
of  
DONALDSON & RICE  
Insurance and Real Estate  
Phone 600  
520 Main St. Paris, Ky.





MILTON B. LOVELL  
Plumbing and Heating  
Plumbing Equipment and Fixtures  
Pumps-Furnaces-Water Heaters  
Repair and Service Work  
719 Vine St. -Phone 1631-Paris, Ky.

Compliments  
of  
BOURBON LAUNDRY & DRY CLEANERS  
147 W. 7th St. Paris, Ky.  
Phone 4

Compliments  
of **DEPENDABLE  
DRUGGIST**  
ARDERY'S DRUGS  
Phone 50 Cr. 7th & Main

A Good School -  
A Good Student Body -  
A Good Faculty -  
THE A. J. WINTERS CO.  
JEWELERS

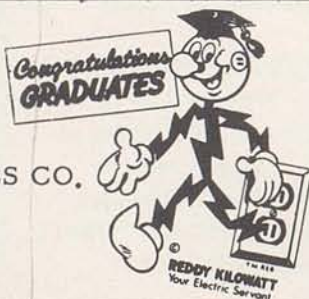
THE CITY OF PARIS  
Congratulates each of you  
and stands ready to back  
our schools.

Compliments  
of  
WHEELER FURNITURE CO.  
Incorporated  
"The store where homes begin"  
530 Main St. Paris, Ky.

JACK COHEN & SONS  
Bostonian Shoes Desney Hats  
Phone 535 Paris, Ky.

Compliments  
of  
SCHINE THEATRES  
Melvin Gaitskill, Mgr.

Compliments  
of  
KENTUCKY UTILITIES CO.  
INC.



WILSON DRUG CO.  
Phone 20



Compliments  
of  
WOODFORD SPEARS & SONS

Compliments  
of  
HALL'S MARKET



<p>Compliments of</p> <p>MR. &amp; MRS. BUD WATSON</p> <p>and</p> <p>TONY &amp; PAT</p>	<p>JONES SERVICE STATION</p> <p>14th and Main St.</p> <p>Paris, Ky.</p>
<p>SUMMERHAYES</p> <p>LUMBER &amp; COAL CO.</p> <p>1318 S. Main St.</p> <p>Paris, Kentucky</p>	<p>Compliments of</p> <p>THEODORE KUSTER</p>
<p>Compliments of</p> <p>RAYMOND CONNELL</p>	<p>CHAS. P. COOK &amp; CO.</p> <p>Frosted, and S. &amp; W. Foods</p> <p>Phone 206-207</p>
<p>Furniture-Stoves-Rugs</p> <p>DORSEY FURNITURE CO.</p> <p>We Deliver</p>	<p>Compliments of</p> <p>GRINNELL DRY CLEANING</p> <p>622 Main St.          Paris, Ky.</p> <p>Phone 793</p>
<p>If it comes from Davis-</p> <p>It is Right</p> <p>J. W. DAVIS &amp; CO.</p> <p>Good Clothing Always</p>	<p>Compliments of</p> <p>DAVIS FUNERAL HOME</p> <p>Phone 137</p>
<p>Compliments of</p> <p>DR. &amp; MRS. B.N. PITTENGER</p>	<p>HUSTON PLUMBING CO.</p> <p>Plumbing and Heating</p> <p>Houston Ave.          Paris, Ky.</p>







<p>Compliments of</p> <p>THE GRAPETTE BOTTLING CO.</p> <p>Bottlers of Bells Beverages</p>	<p>FARRIS PHOTO STUDIO</p> <p>Portraits-Kodak Finishing</p> <p>512 Main St.    Paris, Ky.</p>
<p>Joe C. Smith</p> <p>PAINTING AND DECORATING</p> <p>151 W. 7th St.    Paris, Ky.</p>	<p>Compliments of</p> <p>of</p> <p>ELLIS JEWELERS</p>
<p>Compliments of</p> <p>SAMUEL MILNER</p>	<p>MAIN STREET GARAGE</p> <p>Oldsmobile <i>Oldsmobile</i> Sales &amp; Service <i>FUTURAMIC</i></p> <p>1329 S. Main    Paris, Ky.</p>
<p>MONSON'S CREAMERY</p> <p>Baby Chicks Tuxedo Feeds De Laval Cream Separators 12 Bank Row    Phone 1009</p>	<p>Compliments of</p> <p>BEN COHEN SHOE STORE</p> <p>609 Main Street</p>
<p>Compliments of</p> <p>THE KENTUCKIAN - CITIZEN</p> <p>"Since 1807 a voice of the Bluegrass"</p>	<p>FRED ATKINSON AND SONS</p> <p>FLORISTS</p> <p>Fresh Flowers Always</p> <p>Phone 38-J    Paris, Ky.</p>
<p>Compliments of</p> <p>BARROWMAN'S</p> <p>DRIVE-INN</p> <p>Lexington Rd.    Phone 9168</p>	<p>BELL SERVICE STATION</p> <p>8th Street Paris, Ky. Phone 1133</p> <p>Home of Goodyear "The greatest name in rubber"</p>



WILSON BROS.

Appliances-Hardware  
Implements

Phone 164

Paris, Kentucky



Compliments

of

BALDWIN HOTEL

Compliments  
of

MAIN STREET MARKET

Staple Groceries & Fresh Meats

Phone 16-17

J. T. Tate & Sons, Propr.

STRICKLER FURNITURE CO.

Makers of

Fine Upholstered Furniture

Period Reproduction

and Antiques

Refinishing-Repairing

Slip Covers-Draperies

H. L. Strickler, Mgr.

Paris, Ky.



DODGE PASSENGER CARS



DODGE Job-Rated TRUCKS

WORICK BROS.

Dodge-Plymouth

Phone 307

Compliments

of

ADAMS AND WATSON DRUGS

Reliable Prescriptions

Compliments of

RYE'S

Misses' and Children's Apparel

405 Main St. Paris, Ky.

SALCHLI'S BAKERY

Finest in Bakery Goods

and Specialties

504 Main St. Paris, Ky.

Radio Dispatched  
BUS STATION CAB



Phone 450  
Paris, Ky.

Prompt & Courteous Service

Cars



Trucks

Sales & Service

SOUSLEY MOTORS

8th & High St. Phone 1550

Compliments

of



SAUER'S TEXACO SERVICE

Compliments

of




WAGONER'S MARKET

Winchester St. Paris, Ky.







<p>Compliments of NICK'S RESTAURANTS</p>	<p>PIPES CHEVROLET CO. Sales  Service Phone 532</p>
<p>SMIT'S GREENHOUSES Fine Flowers Expertly Arranged Phone 915 W. 2nd St.</p>	<p>Compliments of SMOKE HOUSE</p>
<p>Compliments of FARM BUREAU INSURANCE SERVICES Walker McCann Agt. 8 E. 4th St. Phone 251</p>	<p>WOLLSTEIN'S "Everything Men and Boys Wear" Phone 40 Paris, Kentucky</p>
<p>OWENS &amp; TAYLOR MARKET Groceries Fresh Meats We Deliver Phone 92 &amp; 93 Paris, Kentucky</p>	<p>Compliments of KERR'S SERVICE STATION  Standard Oil Co. "Where to Get Service"</p>
<p> Compliments of J. C. PENNEY CO. "Where a Nation Shops and Saves" Always First Quality</p>	<p>BRENT &amp; CO. INC. Field Seeds Wool Grain Kentucky Blue Grass 25 E. Main</p>
<p>Compliments of JAMES L. GOREY INSURANCE &amp; REAL ESTATE 326 Main</p>	<p>Compliments of WOMAN'S EXCHANGE</p>



<p>Compliments of Jack Cohen</p> <p>CROWN JEWELERS</p> <p>615 Main St.    Paris, Ky.</p>	<p>BOURBON HARDWARE     &amp; IMPL. CO.</p> <p>"The Farmers Store"</p> <p>420 Main St.            Phone 214</p>
<p>Compliments of</p> <p>PARIS FOOD MARKET Everett Hall, Owner</p> <p>1358 S. Main St.    Phone 442</p>	<p>PARIS LAUNDRY &amp;     DRY CLEANING     INCORPORATED</p> <p>815 Main St.    Paris, Ky.</p>
<p>Compliments of</p> <p>LINESTONE GAS CO.</p>	<p>Compliments of</p> <p>J. J. NEWBERRY CO.</p>
<p>Compliments of</p> <p>FULLINGTON'S</p>	<p>Compliments of</p> <p>HART'S</p> <p>Mrs. Adams Mrs. Watson</p>
<p>Compliments of</p> <p>THE GIFT BOX</p> <p>W. H. Williams     (Owner)</p>	<p>Compliments of</p> <p>DR. &amp; MRS. LESLIE SMITH</p>
<p>J. HAMLET GOLLIER &amp; SON</p> <p>Electrical Contractors Sales &amp; Service <b>Hotpoint</b></p> <p>721 High St.    Paris, Ky.     Phone 401-R</p>	<p>Compliments of</p> <p>A FRIEND</p>





Compliments

of

**CLIFTON MARKET**

**DETROIT HARVESTER COMPANY**

Paris Products Division

Paris, Kentucky



Compliments

of

**GIFFIN  
MANUFACTURING CO.**

Carlisle, Kentucky



**OTHER FRIENDS AND PATRONS**

Lykins Shoe Store

Mr. & Mrs. Woodford Wornall

Nancy Juanita Smith

Bourbon Tire Service

Sarah Frances Swinford

Mr. & Mrs. Dave Purcell

Marjorie Swinford

Garnett Swinford

Mr. & Mrs. George Smith



*Myers*  
**YEARBOOKS**  
*in deeptone*





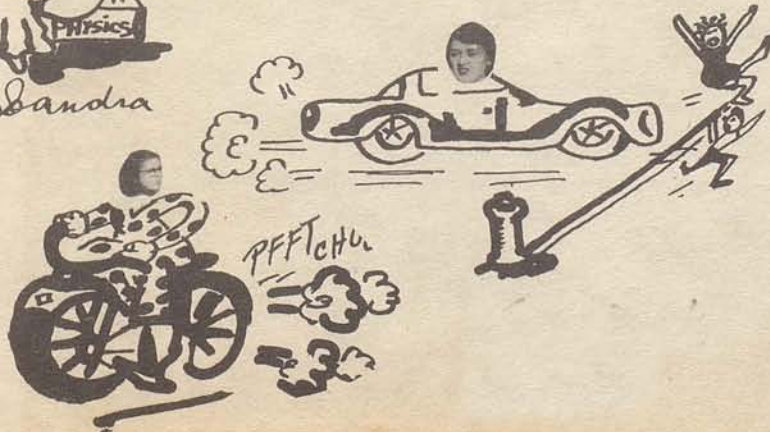




# CRAZY-UP MIXED-KIDS



MON





COVER BY  
MYERS