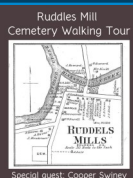


# HOPEWELL MUSEUM POST

October/November/December Newsletter 859.987.7274 • [www.hopewellmuseum.org](http://www.hopewellmuseum.org) • [info@hopewellmuseum.org](mailto:info@hopewellmuseum.org) • Volume 24 No. 5

## Ruddles Mill Cemetery Walking Tour October 20, 2-4 PM



**OCTOBER 20, 2019**  
**2:00 PM**  
\$10/PERSON, 15 UNDER FREE  
FREE REGISTRATION REQUIRED  
hopewellmuseum.org  
HOPEWELL MUSEUM  
HISTORIC PARIS-BOURBON COUNTY

### October 20, 2-4 PM

- \$10/members • \$15/non-members
- Limited to 30

- Must arrive by 2 PM to go on the tour
- Proceeds benefit HPBC-Hopewell and the Ruddles Mill Cemetery.

Cooper Swiney will be a guest leader of the tour as he completed an extensive survey and helped preserve gravestones at the cemetery as part of his Eagle Scout project in 2015.

Please follow our FB event page for information on parking as we get closer to the event.

## Annual Meeting & Soup Supper November 14, 6-8 PM



Join us on Thursday, November 14 for our annual meeting & soup supper. Dinner begins at 6 PM. This year, we will recognize and honor the hardwork of our many volunteers in addition to the regular annual meeting. This dinner is free and open to members and volunteers. See you there!

## Annual Christmas Party December 14, 5-7 PM

It's hard to believe, but it will be December before we know it (hopefully not a 90 degree one, though!). You're invited to our annual Christmas party at the Museum on December 14. We'll celebrate the holidays with friends and good food. We may even convince you to sing a few songs around the piano!

\$35/members • \$40/non-members  
All proceeds benefit Hopewell Museum education programs.



## Upcoming Family Fun Series Programs



### Oct. 25, 6– 8 PM: Night at the Museum

- Spooky stories w/Mary Lovell
- Special night time tour of the hidden areas of the Museum
- Halloween themed crafts inspired by history.



### Nov. 16. 2-4 PM: Gingerbread Houses with Fonda

- Limited to 20
- Call ahead by November 9 to reserve your child's spot.



### Dec. 8, 1:30, 2-4 PM: Sunday with Santa

- Families with children with sensory sensitivities or other special needs are invited to come at 1:30 PM when the Museum will be less crowded and quieter.
- Christmas themed craft
- Free photo with Santa (pick up photos the following week).

All children must have a chaperone in attendance for each program. Visit our Facebook event page for more details.

## School Administrator Open House October 16, 8-9 AM



We are inviting any Paris-Bourbon County school administrator to visit the Hopewell on October 16 at 8 AM. Administrators will visit the non-public areas of the Museum, learn about what we can offer schools on-site and in the classroom, network with each other, and enjoy donuts and coffee!

**Please RSVP by October 11.**

Like us on Facebook and follow us on Twitter (HopewellMuseum) Instagram (@HopewellMuseum)

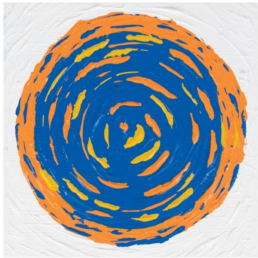
Regular Hours Wed-Sat 12-5 Sun 2-4 or by appointment

Admission \$5 adults; members, 18 & under FREE

Contact us if you would like information about including HPBC/HM in your estate planning.



## 18th Annual Creative Harvest Art Exhibit Opening Reception: October 11, 6-8 PM

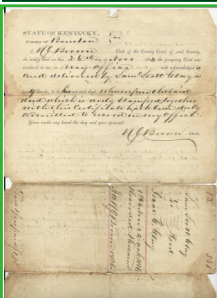


### HOPEWELL CREATIVE ARTS GUILD

The Hopewell Creative Arts Guild and the Hopewell Museum present the 18th Annual Creative Harvest Art Exhibit at the Hopewell Museum from October 11-December 15. HCAG picks up where Stoner Creek Arts left off and accepted more than 40 works of 2D and 3D art from local and regional artists through a juried process. The Museum is happy to continue

hosting and supporting this contemporary art exhibit as well as sponsor the submissions from local high school students. Keep your eye out for announcements regarding classes and workshops hosted by HCAG to go along with the exhibit.

### Researchers welcome!



As we continue with our collections inventory and catalog we are often finding collections that may be of interest to potential researchers. While we cannot put these online as of now, we still want to share what we have with scholars and students! We have documents and correspondence regarding horse farms, sports figures from Paris/Bourbon

County, Civil War letters, WWII materials, music history, indentures and land grants from the early 19th Century, wills from before the Civil War, various political history items, and various photos and other documents. If you are looking for information on a particular topic please feel free to email [info@hopewellmuseum.org](mailto:info@hopewellmuseum.org) to see if we can help you.

### Welcome Orloff!

If you visit the Museum on Saturdays you may notice a new face at the Museum. We have welcomed Orloff Miller as our new temporary paid staff member to the Museum. Orloff will provide coverage for all of our Saturdays through the end of the year and assist with longer term projects and research.

He has a background in historical archaeology and experience working with architectural review boards in Kentucky communities. We are thrilled to welcome him!

