

Hopewell Museum in Color

Historic Buildings of Paris, Kentucky

Downtown Paris, Kentucky has a rich architectural history. The current courthouse was completed is the 4th courthouse building after the previous three had burned down. It is the seat of local county government for Bourbon County.

An example of Beaux Arts architecture, it was completed in 1905.

The former Paris Post Office (which is now the Hopewell Museum) is another example of Beaux Arts architecture and was completed between 1909 and 1911.

This style of architecture was used in government buildings, grand hotels, train stations, libraries, museums, and on college campuses. Not only was regular mail sorted and delivered here, but also such items as chickens!

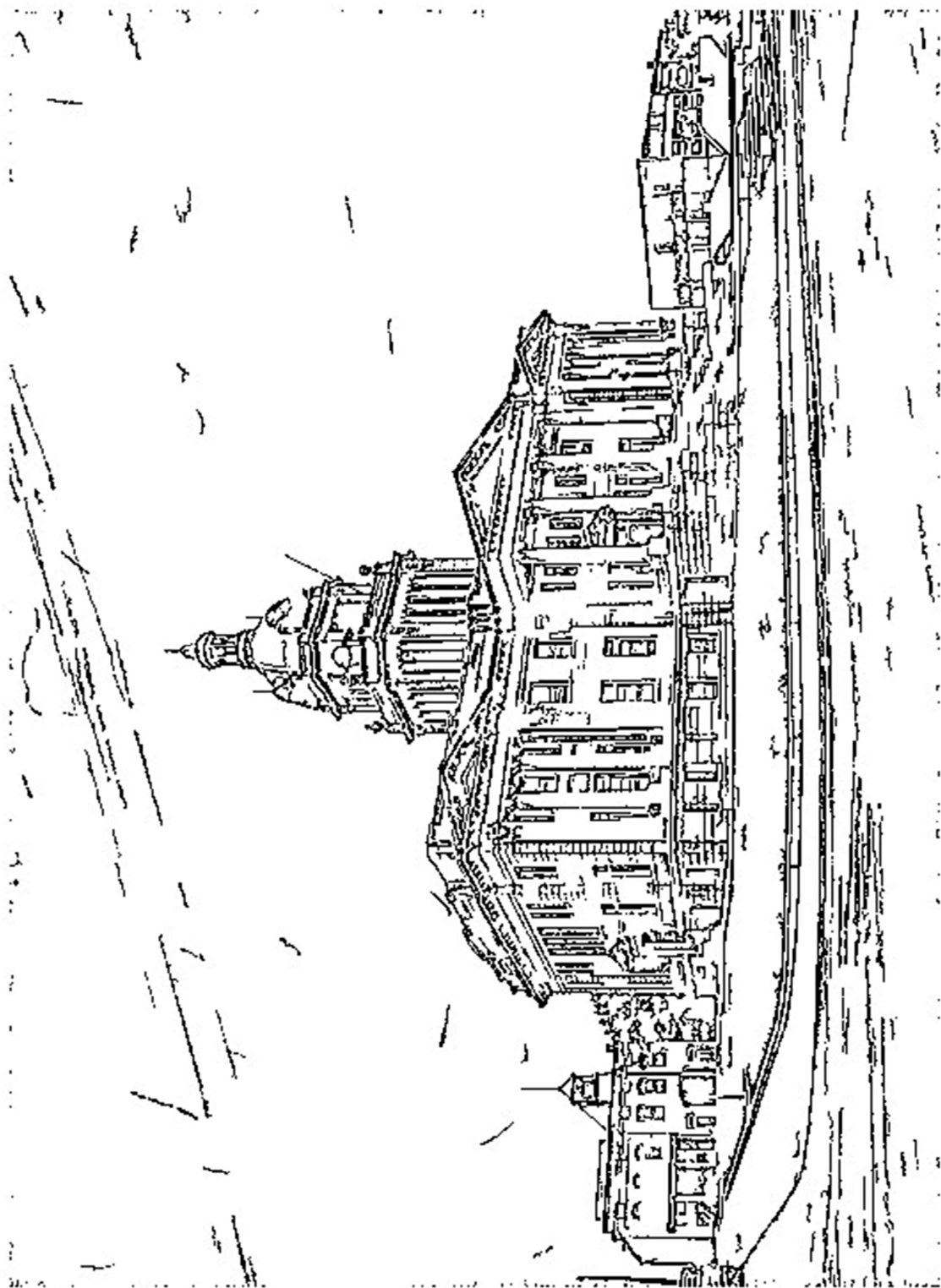
The Paris-Bourbon Library was completed in late 1904 and has been open to visitors ever since. The Library is considered a Carnegie Library, meaning that Andrew Carnegie (a wealthy businessman and philanthropist from the east coast) financially supported the construction of the building with the understanding that Paris would maintain the building.

Mary Spears Van Meter sketched several Paris and Bourbon County scenes, including the one here of Main Street store fronts in Paris. She was one of the founders of Historic Paris-Bourbon County.

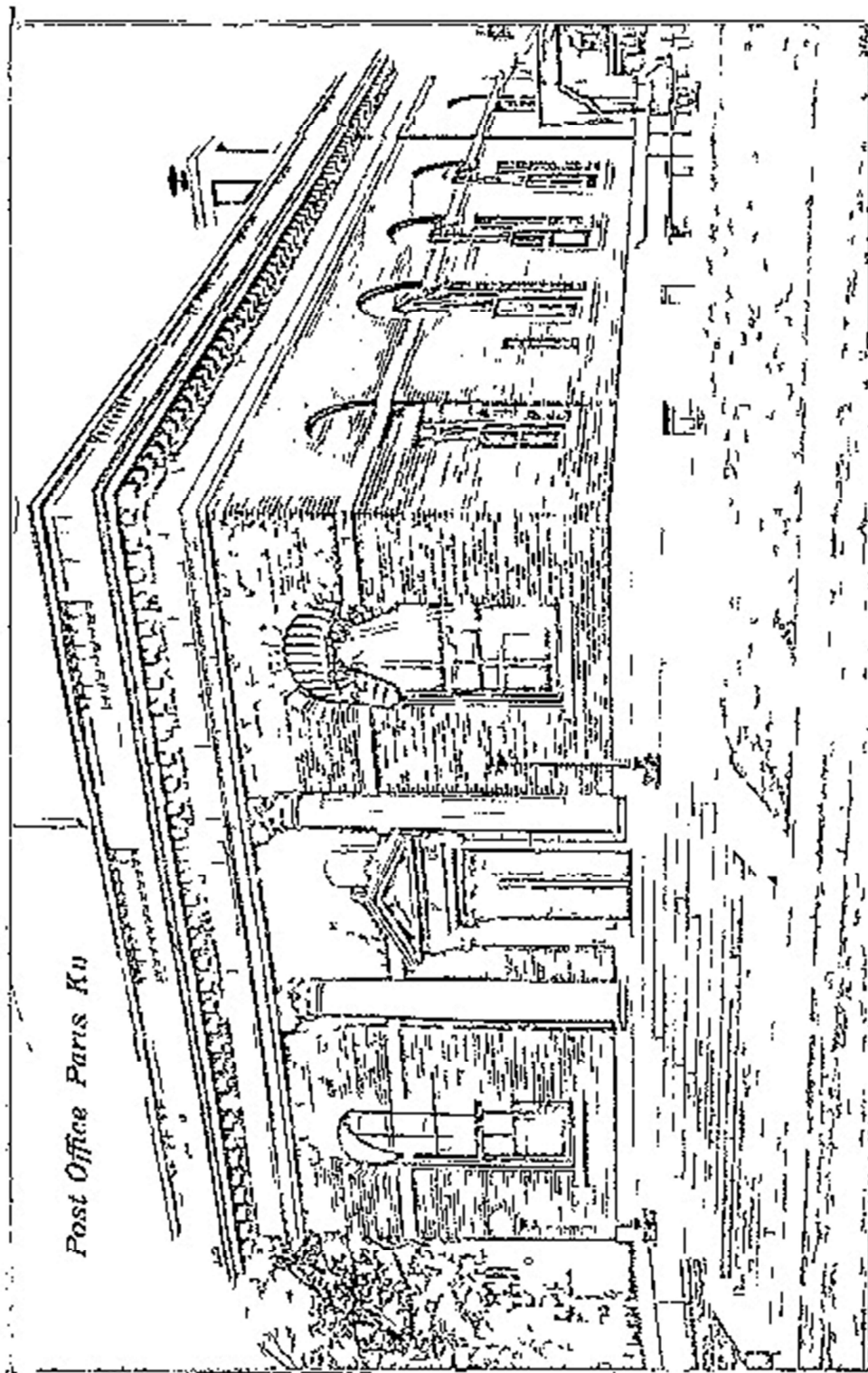
Coloring pages are of drawings, photos, art, and postcards from our collections.

Download, print, and enjoy!

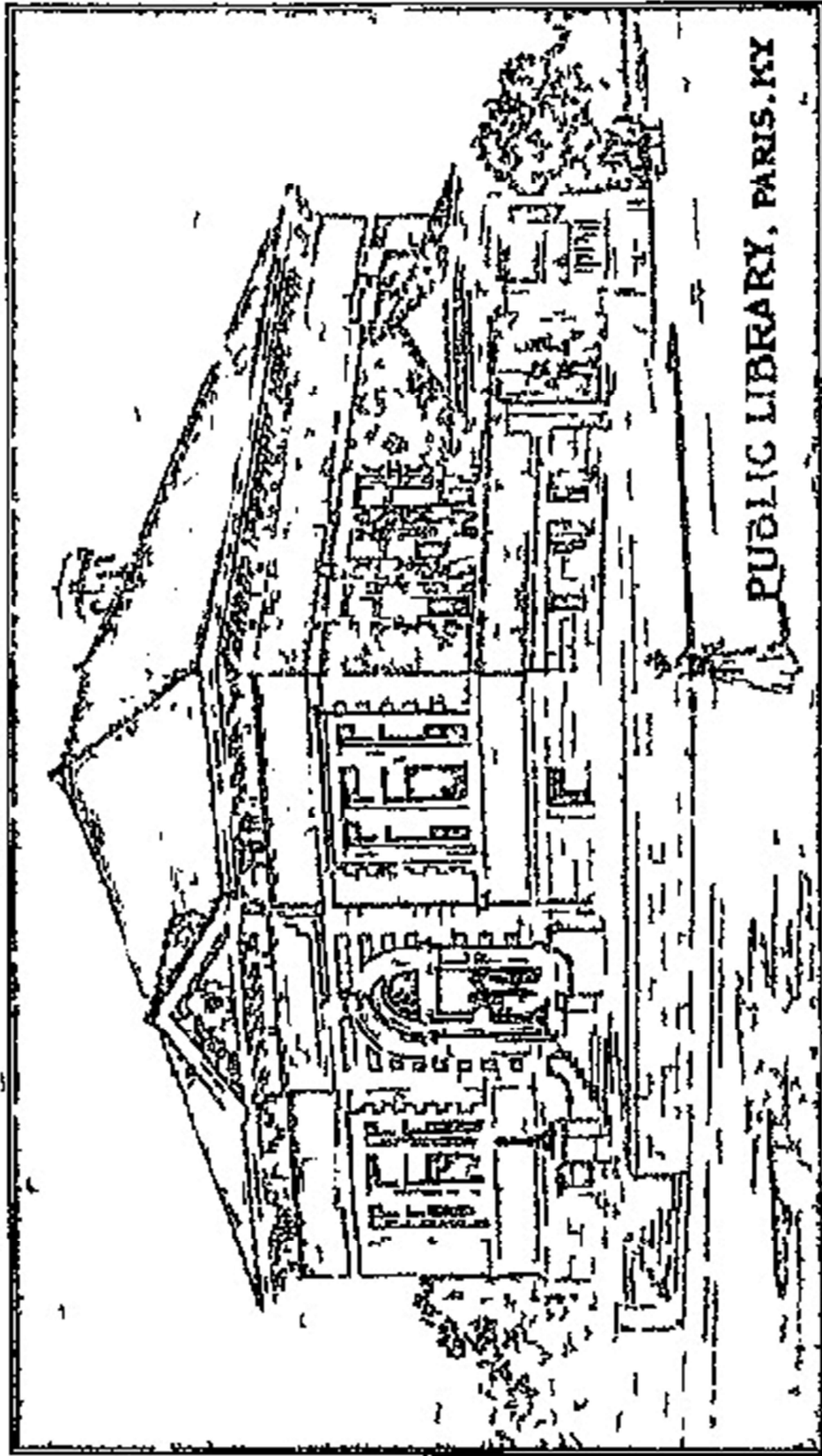




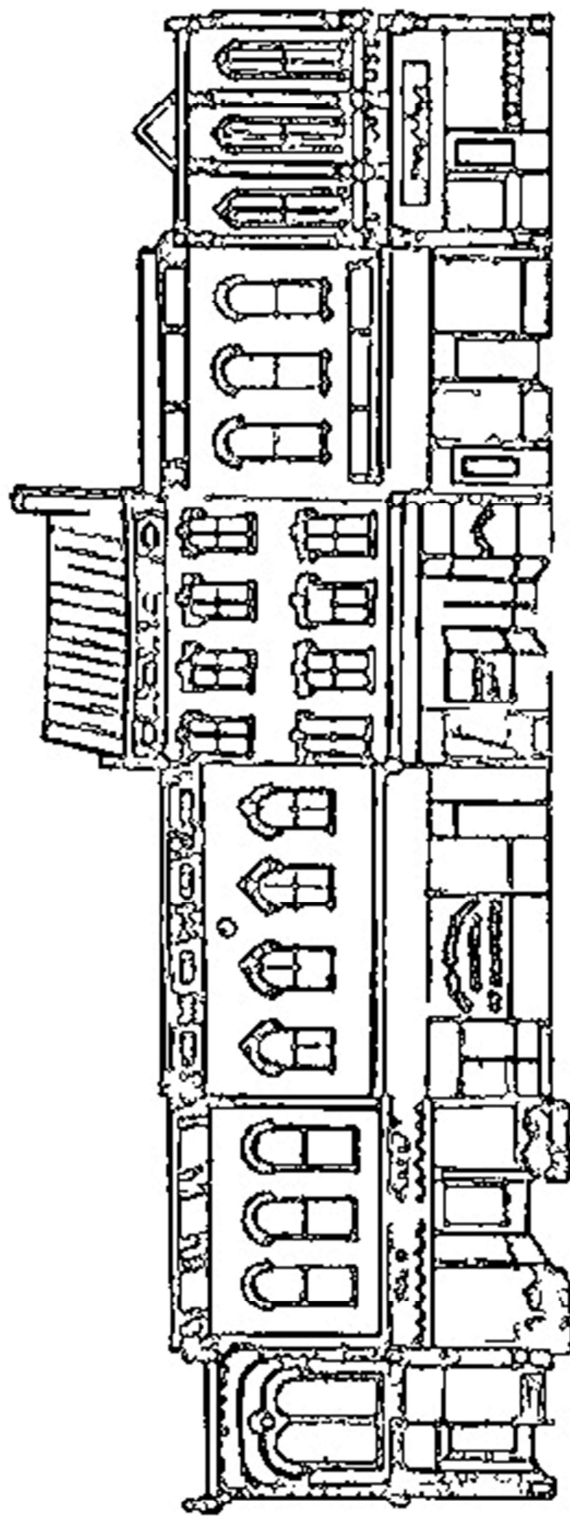
4th Bourbon County Courthouse, 1905



Paris Post Office (Now Hopewell Museum), 1909-1911



Original Paris Library, 1904



Sketch of downtown Paris, Kentucky by Mary Spears Van Meter