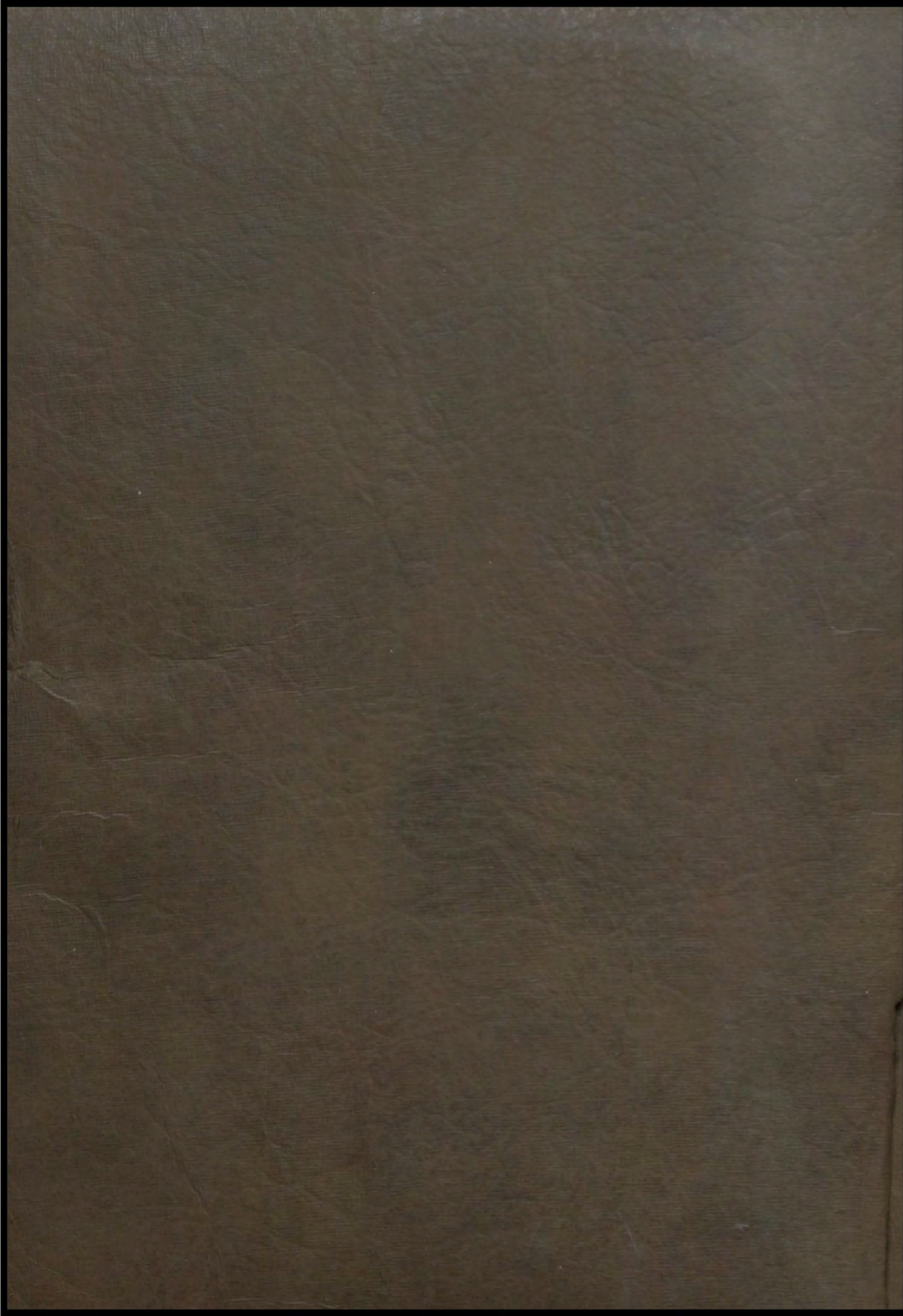


# Parisian '23



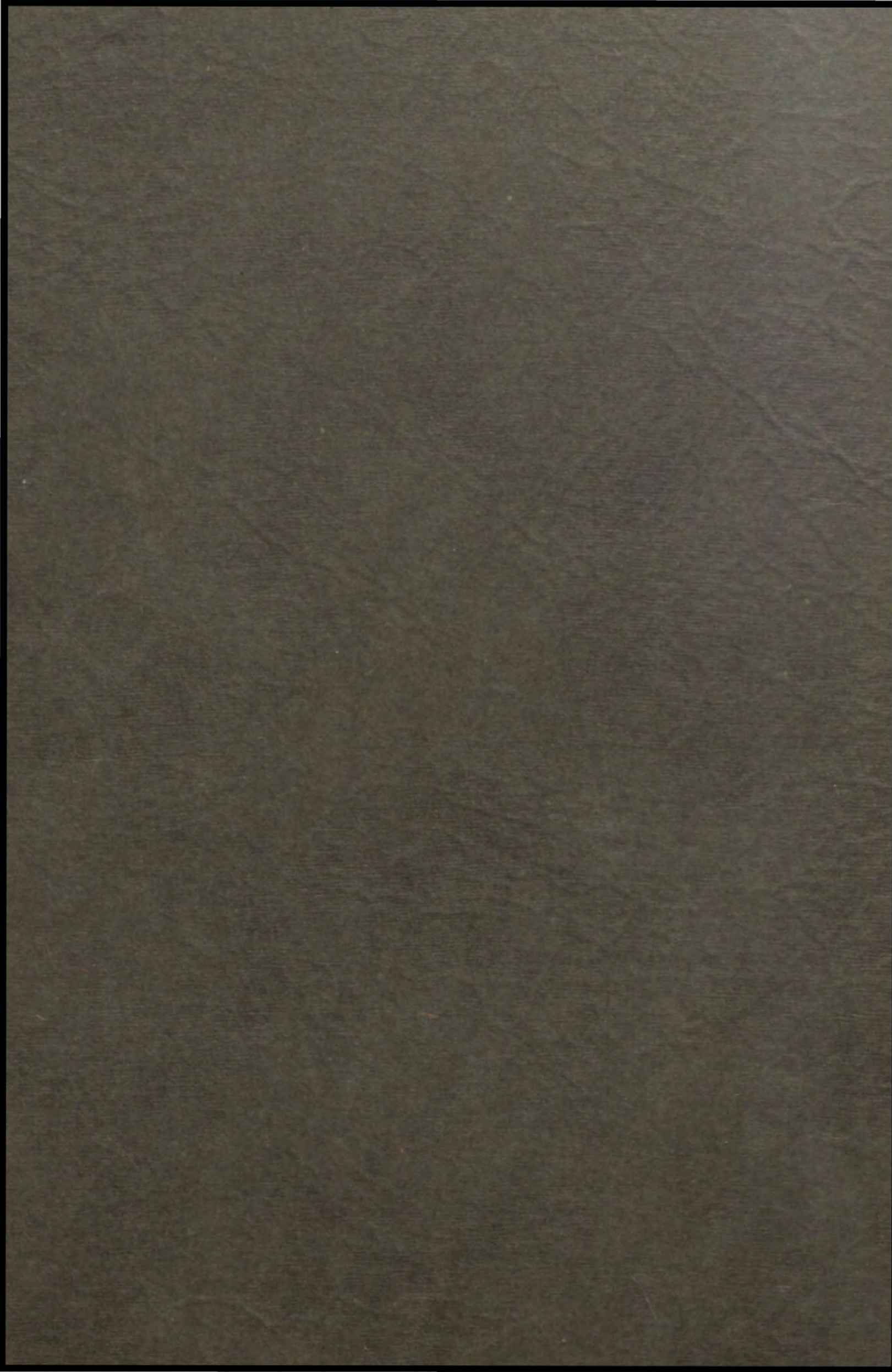






















# The Parisian

Volume II

PARIS HIGH SCHOOL



Published by the Senior Class  
1923





F. A. SCOTT, *Principal Paris High School*

## Dedication

One of the Greek poets said that perhaps the most intellectual performance of the human mind was to go back in a review of your life and find the personalities that had been your inspiration, and the noblest act of the human soul was to accord to these personalities the gratitude they merit. In dedicating the 1923 *PARISIAN* to Prof. F. A. Scott, we desire to try to follow the poet's philosophy of thinking. Prof. Scott came to our school two years ago, and entered immediately into the midst of the life of the school, putting energy, enthusiasm, intellect, courage and interest into every phase of school work. The students and faculty have no problems in which he is not interested and into which he fails to put his very best. The growth and development of the school along so many lines are due in large measure to his supervision and interest. The Senior Class of 1923, in dedicating the *PARISIAN* to him, desire to express to him their sincere appreciation of his service in every line.





## Contents

BOOK I  
THE FACULTY


BOOK II  
THE CLASSES

BOOK III  
ATHLETICS

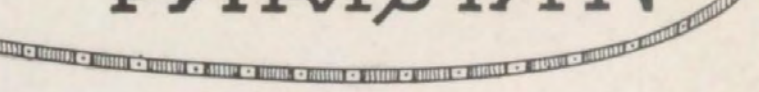
BOOK IV  
ORGANIZATIONS

BOOK V  
LITERARY





# PARISIAN



PROFESSOR LEE KIRKPATRICK, *Superintendent Paris City Schools*  
A. M., Columbia University



# PARISIAN



## BOARD OF EDUCATION

A. B. HANCOCK, *President*

DR. R. R. McMILLAN, *Vice President*

J. F. DAVIS, *Secretary*

BUCKNER WOODFORD, *Treasurer*

J. S. WILSON

S. S. ARDERY, JR.





# PARISIAN



PARIS HIGH SCHOOL





Faculty





# PARISIAN



MISS MAUDE ASBURY, B. S.  
University of Kentucky  
*Home Economics*

MISS LUCILLE HARBOLD, A. B.  
University of Kentucky  
*Latin*

MISS ZERELDA NOLAN, A. B.  
University of Kentucky  
*English*







# PARISIAN



F. A. Scott, A. B.  
Southwestern Presbyterian  
University  
*Mathematics*



MISS REBA LOCKHART, A. B.  
Chicago University  
*History*



MISS FRANCES V. BUTLER, A. M.  
University of Kentucky  
*Science*



# PARISIAN



JOHN SHAW, A. B.

Transylvania

*Mathematics and English*

HORACE M. CLAY, A. B.

University of Kentucky

*Mechanical Drawing*

CHARLES MAHONEY

University of Kentucky

*Manual Training*







# PARISIAN



MISS LULA BLAKEY, A. B.  
University of Kentucky  
*English*

ROY I. PEPPER, A. B.  
Centre College  
*Mathematics*

MISS IRENE EVANS, B. S.  
University of Kentucky  
*Home Economics*



# PARISIAN



MISS NELL ROBINS, A. B.  
Martha Washington College  
*Director of Physical Education*

MISS ELLEN BLANDING  
College of Music, Cincinnati;  
Dept. of Music, Cornell University  
*Supervisor of Music*

MISS MARY LOUISE LILLARD, A. B.  
Randolph-Macon  
*Latin and History*







# PARISIAN



MISS ERNESTINE FIELDS, B. C. S.  
Bowling Green Business College  
*Commercial Department*



MISS NATA LEE WOODRUFF, A. B.  
University of Kentucky  
*Romance Languages*



# PARISIAN



MOMENTS OF REST





# PARISIAN



MOMENTS OF SMILES





# Classes





# PARISIAN



MOMENTS CUT OUT





# Seniors







## Senior Class Officers

HARMON TAYLOR.....*President*

RAYMOND TURNER.....*Vice President*

RUBY HALL.....*Secretary*

BERNICE CALVERT.....*Treasurer*



# PARISIAN

NANCY DEEVER

"Nan" is one of the good-looking girls of the Senior class. She is kind, and of a sweet disposition. "Nan" fails to inform us about her future career, but we have a good idea. She is a holy terror at history, and all in all, a valuable asset to our class.

EDGAR HILL

Edgar is so small that we have to put on glasses to see him, but we certainly know when he is around. He is smart and intelligent, and was never known to get below A in any of his subjects. Here is a student we can depend on to do anything, and do it well.

ALBERTA MYERS

"Bertie" is a member of the Senior class of whom all are proud. She is pretty and friendly, and always ready to do her best when called upon.





# PARISIAN



ELLEN SCOTT

Ellen is a mighty good girl. Possibly you have heard her wonderful voice. If you haven't you have missed something of rare beauty. We predict a great future for Ellen.

ANNA WARE MYERS


Anna Ware has the brightest disposition of anyone we ever met. She is kind and thoughtful. When you have "Jeff" around, you have all kinds of jolly proceedings. Her life will always be bright, because she will make it so.

AMANDA CLAY COLLINS

Amanda is a quiet girl, but when recitation time comes, we all know she is around. Amanda has large, pretty, brown eyes, for which many of the girls envy her. She is very ladylike, and is admired by all of her classmates.



# PARISIAN



## MARTHA COLLIER

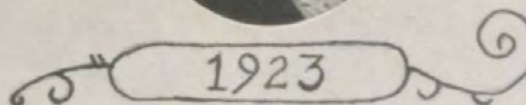
Martha is a leading spirit in Paris High. If you want to see anything done, and done well, call Martha. It is remarkable that she can do all the work she does for the school.

## GALE BROWN

If you want to meet a nice, likable chap, it is Gale. He is well liked by the High School pupils. And he may some day be an expert typist, from the looks of things at the present time.

## JOSEPHINE ANN ADAMS

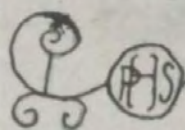
"Jo" has been with us through all of high school, and is one of our brightest students. She has many friends because of her winning ways. "Jo" is the life of our class, with her merry laughter, pep, and pleasant smile for everyone she meets, even on a rainy day.







# PARISIEN



RUBY TAYLOR

Ruby is another of our quiet girls, but we know she can be lively on occasions. She is one of our best students, and she rarely misses the honor roll. Ruby has a kind word for everyone, and is a friend to all in school.



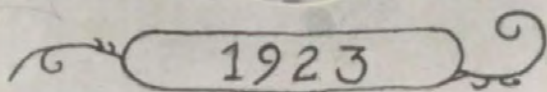
HAMLET COLLIER

"Scuff" carries his smile wherever he goes. He is a prime favorite with everyone in the class. He specializes in mound digging, and we wish him the best of luck in his most interesting enterprise.



BERNICE CALVERT

No finer girl can be found anywhere than Bernice. She has all of the qualities you could possibly desire in a young lady.



1923



# PARISIAN



## EDNA EARLE BURNS

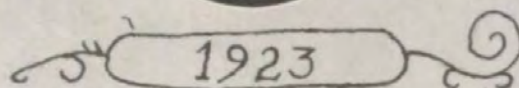
If you are looking for someone to make the piano talk, Edna Earle is the person. She is smart in other ways, too, and is liked by all. She has a most jolly disposition.

## BLANTON COLLIER

Blanton is what we term a "lion among ladies." Just ask Sarah. Seriously, he is one of the best students of our class. He has a good disposition, and his good looks have made many a girl's heart go "pit-a-pat." He plays fine basket ball.

## SALLIE PAYNE

Sallie is a first-class student in Home Economics, and in the future will have a nice home of her own. She is a star in basket ball, and accomplishes everything she undertakes with great success. She is a favorite with the teachers.







# PARISIAN



FRANCES ANNE STEENBERGEN

Frances Anne is a very beautiful young lady. She is a heart-breaker, a fine student, and very popular among the other students of Paris Hi. She was one of the star basket ball players on the girls' team this season.



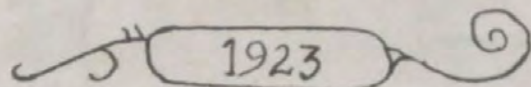
HARMON TAYLOR

"Hank" is one of the most popular boys in all high school. He was elected president of the Senior class early in the year. He is an all-around athlete, having played football, basket ball, and baseball. He was also made editor of the *PARISIAN* for the first semester. He is well liked.



LILLIAN ALEXANDER

Lillian is one of our quiet girls, but whatever she does she always succeeds in doing it well. As chairman of the historical committee of the historical division of the History Club, she can always be depended upon.





# PARISIAN



## ANNA HOWE DONNELL

Anna is a serious-minded girl, but always ready to enjoy a joke. It will be a very efficient farm that has her for a mistress.



## LESLIE SMITH

Leslie is one of the best all-around boys in our large class. He is a fine student, and is especially fine in Latin. We believe he will be a success wherever he goes.



## ADDIE FIGHTMASTER

Addie has always been a favorite, especially with the teachers. She is always in the best of spirits, and never fails to see the bright side of life.



1923





# PARISIAN

LHS



LEONARD McCANN

Leonard is the kind of a student that is a credit to any school. He is an all-around athlete, and we believe he will be seen on a college gridiron next year. He is a handsome and good-looking boy. Goodbye and good luck.



JOHN WILLIAMS

John is a holy terror at trig, and we see him some day as a professor of math. John was one of our hardest workers in football. He was chosen captain of the baseball team, and we know we could not have done better. John is quiet and takes life easy, but does not overlook a single opportunity.



TOM SPICER

Tom is one of our bright boys. He can turn his hand to anything and make a success of it. He is the editor of the PARISIAN ORACLE, and certainly did his part in making a success of it. Tom is well liked and we know he will be a success wherever he goes.

1923



# PARISIAN



## ELIZABETH WHEELER

Elizabeth is one of our best students. Although she has been handicapped by illness throughout the entire year, she has managed to keep up her studies to a high degree of efficiency. She will be a credit in whatever she decides to do. "Here's to you," Elizabeth.



## FRANCIS P. ROURKE

Francis is one of our most popular boys. He is admired by girls as well as boys. His pleasant manners, good looks, and humor would make anyone who came into contact with him like him. Although we are no prophets, we are sure he will make his life worth while.



1923





# PARISIAN

L.A.S.



MARY ELIZABETH WEATHERS

She is like a flower that never fades. Rain or shine, "Biz" has her sweet smile, and we all love her for it.



CHARLES CHRISTMAN

"Dutch" will long be remembered by all of the class of '23. He is a general favorite among the students, and his manners will always win him friends, no matter where he is. Charles is a famous baseball pitcher, and is feared and admired by all opponents. He is the florist of the class, and furnishes flowers for all occasions. Here's luck to you in after life, Charles.



MARY GRAHAM WILLIAMS

Mary is renowned in her cooking, and whenever we have any kind of a sale, everyone calls for Mary Graham. She is the sunshine of our class, and we all love her pretty red hair.

1923



# PARISIAN

MARY KATHERINE TAYLOR

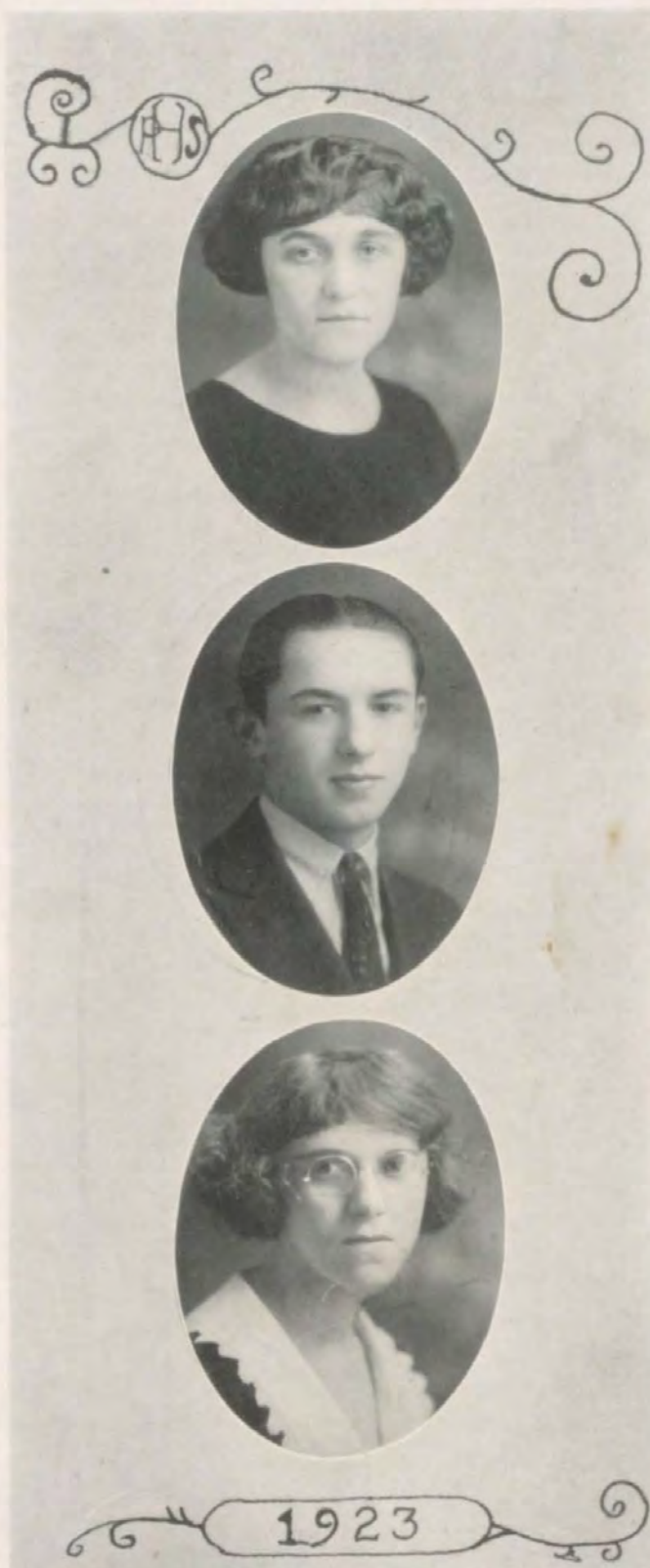
Mary Katherine is the most agreeable girl in school, and will have friends wherever she goes. In looking over the whole high school you cannot find a sweeter girl than Katherine. She expects to teach, but from the looks of things, we are afraid not. At any rate, we wish you luck, Katherine.

ROBERT McCARTY

"Bob" or "Mac" (he answers to either one) is one of our youngest Seniors, and is a second Valentino. Bob is a regular encyclopedia when it comes to history. If you must know something in history, or the latest style in men's furnishings, just ask Bob. But he is no slacker in work, and is always ready to lend a hand.

RUTH WHEELER

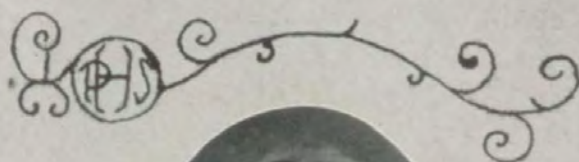
Ruth is the fun of the class. She is always ready with her wit, but takes her work seriously and can always be depended upon.







# PARISIAN



RUBY HALL

Another leading spirit is Ruby. She is for Paris High first, last, and for all time. She has been a basket ball star for four years, and will be greatly missed next season. She has a smile that wins everyone.



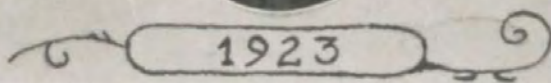
GEORGE DUNDON

George has always been very popular with both faculty and students. He plays all forms of athletics, and will be missed from the teams next year. He is a jolly good fellow.



CAROLYN WILMOTH

"Tar" is one of our most popular girls. She is pretty and witty, and you can hear her sweet ringing laugh any time you listen for it. "Tar" is a very pleasant person to be around, and we wish her luck.



1923



# PARISIAN

## ROBERT LEE FRANK

Bob is a type of student that we cannot describe in this limited space. He is regular war on blues, and keeps us looking on the bright side of life. He is ever ready to help when he is needed, and never fails to spring some surprise. He is an entertainer of rare ability, and is well liked by faculty and student body.



## RAYMOND TURNER

Raymond is better known as "Fisheye," and is one of the most popular boys in school. He is a perfect wizard when it comes to "trig." His blue eyes are a constant joy to all who look into them. Raymond will make good wherever he goes.

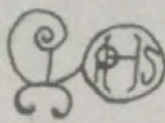


1923





# PARISIAN



ANN LOUISE SAUER

Ann Louise will undoubtedly have the best husband in the world—we have her word for it. Well, she deserves him. Ann Louise is one of the quiet girls, and is liked by everyone who knows her. We just know she'll make a success in life.



MARY FRANCES KISER

Mary Frances is another one of our class artists, and we are proud of her. She has many sweet ways, and is admired by all.

1923



# PARISIAN

CATHERINE FRANCES DUNCAN

"Pete" is one of the prettiest girls of Paris Hi. She has pretty brown eyes and black hair. She has plenty of school spirit, and can always be depended upon, especially when it comes to preparing menus for history club trips.

JAMES LAWRENCE GOREY

We all know Jimmie by his winning smile, and if he hadn't been with us, many days would have been dark and dreary. No finer boy can be found anywhere.

MARY ANITA OVERBY

Although Anita is small, she is the pep of our class, and is always ready to do her part. She is what most people would call a heartbreaker, but we envy her that. She is kind, and has the ways of a queen. As business manager of the Latin Club, she has proved her ability in many ways.





# PARISIAN



FRANCES BROWN

Frances has won a name for herself in dancing. She is in her glory when she can dance. Frances is sweet and pretty, and in leaving Paris Hi she leaves a host of friends who wish her success. We hope to meet her in college next year.



ELMER BURNETT

One of our best Senior boys is "Rip." He is ever ready to lend a helping hand, and he is our artist. He is renowned for his talent in printing and drawing, and we know he will be a great artist some day.



MARY ELIZABETH PETREE

Although Mary is small, she can be heard, if not seen, on all occasions. She is as pretty and witty as any person you wish to meet. Mary is also a good seamstress, and can make some beautiful things when she takes up a needle. Mary has many friends, and in leaving high school no one can be found to fill her place.

1923





# Juniors







## Junior Class Officers

BILLY KENNEY.....*President*

MARGARET SANTEN.....*Vice President*

MARJORIE TRISLER.....*Secretary*

FRANCIS CLAY.....*Treasurer*



# PARISIAN



1924

**Thelma Colliver**  
"The Idlers"  
"Springtime"  
"Fads and Fancies"  
Glee Club

**Margaret Cleveland**  
History Club  
Orchestra  
Senate  
Latin Club  
Glee Club  
"The Neighbors"

**Ruby Lovell**  
Glee Club  
History Club  
Midgets Basket Ball  
Bible Contest  
Music Memory Contest

**Pansy Burns**  
Romance Language Club  
History Club  
The Senate  
Latin Club

**Eleanor Swango**  
Latin Club  
History Club  
The Senate  
"Springtime"  
"Fads and Fancies"  
Glee Club

**Martha Connell**  
"The Idlers"  
The Senate  
History Club (Treas.)  
Romance Language Club  
Latin Club  
"Springtime"  
High School Debating Team

**Mary Sandusky**  
History Club  
Romance Language Club  
"Springtime"  
The Senate  
Bible Contest

**Nettie Dalzell**  
Basket Ball  
"Springtime"  
Bible Contest  
History Parade  
Music Memory Contest

**Ruth Lovell**  
History Club  
Romance Language Club  
Basket Ball Team  
Glee Club  
The Senate  
"Springtime"

**Mildred Allen**





# PARISIAN

**Joe Faulconer**  
Midget Football  
Football  
History Club  
Senate  
Romance Language Club  
"Springtime"  
Radio Club

**Lorraine O'Neal**  
Romance Language Club  
"Springtime"  
Music Memory Contest

**Fred Fister**  
Latin Club  
Senate  
History Club  
Radio Club

**Elmeta Douglass**  
Romance Language Club  
Latin Club  
History Club  
"The Idlers"  
"Springtime"  
"Fads and Fancies"  
Senate  
Glee Club

**Frank Fitzgerald**

**Trella Collins**  
Glee Club  
Music Memory Contest  
Bible Contest  
"Springtime"  
"Fads and Fancies"

**Ferdinand Nagel**  
Romance Language Club  
Radio Club  
Junior Senate  
History Club

**Carlisle Swinford**  
"The Idlers"  
"Springtime"  
Music Memory Contest

**William Bowman**  
"Springtime"  
History Parade

**Ethel Shanklin**  
Latin Club  
Romance Language Club  
"Springtime"  
History Club  
"Fads and Fancies"  
Glee Club  
Senate





# PARISIAN



**Eleanor Payne**  
Basket Ball  
Glee Club  
"Springtime"  
By the Wayside History Club  
"Fads and Fancies"  
Senate of Junior Class  
Romance Language Club  
Latin Club

**Ray Cahal**  
Basket Ball  
"Springtime"  
Football (Midget)

**Elizabeth Gaitskill**  
"The Idlers"  
"Fads and Fancies"  
Glee Club

**Harry Tucker**  
Basket Ball  
Football  
Baseball  
Romance Language Club  
Latin Club  
"Fads and Fancies"  
"The Idlers"  
"Springtime"  
Senate  
Midget Football  
Midget Basket Ball  
Track Team

**Lucile Chipley**  
"Springtime"  
"Fads and Fancies"  
Glee Club  
High School Orchestra  
"Idlers"  
"Microbe of Love"  
"Sleeping Beauty"



**Hallan Goldstine**  
Latin Club  
Romance Language Club  
Radio Club

**Opal Mallory**  
History Club  
Glee Club  
"Springtime"  
Basket Ball  
Senate  
"Idlers"

**George Adams**  
"Springtime"  
Secretary of History Club  
Senate  
Basket Ball  
Baseball

**Margaret Santen**  
History Club  
Latin Club  
Basket Ball  
Latin Tournament  
"Fads and Fancies"  
Secretary of P. H. S. Senate  
"The Idlers"  
"Springtime"

**Georgia Adams**  
Romance Language Club  
History Club  
Latin Club  
"Fads and Fancies"  
"Springtime"  
Debating Team  
Senate





# PARISIAN

**Carley Scott**  
Football Team  
"Springtime"  
Track Meet  
Bible Contest

**Edna Rose**  
Basket Ball Team  
"Springtime"  
Glee Club  
History Club  
The Senate  
Junior Cheer Leader  
Midget Basket Ball

**Russell Tabor**  
History Parade  
Bible Contest

**Onalee Stone**  
History Club  
"Springtime"  
Glee Club  
Romance Language Club  
The Senate

**Henry Sandusky**  
History Club  
Romance Language Club  
The Senate

**Ruth Tabor**  
Glee Club  
History Club  
Romance Language Club  
"Microbe of Love"  
"The Idlers"  
"Springtime"  
"Fads and Fancies"  
The Senate

**Francis Clay**  
Class Treasurer  
Romance Language Treas.  
"Springtime"  
The Senate

**Elizabeth Mason**  
History Club  
The Senate  
Romance Language Club  
Bible Contest  
History Parade

**Frank Shropshire**

**Virginia Still**  
Glee Club  
History Club  
The Senate





# PARISIAN



**Frances Thompson**  
 "Sleeping Beauty" Play  
 "The Idlers"  
 "Springtime"

19 24



**Robert White**  
 By the Wayside History  
 Club  
 Latin Club  
 Baseball Team  
 Radio Club  
 High School Senate



**William Kenney**  
 Midget Basket Ball  
 Midget Football  
 "Springtime"  
 Football  
 Basket Ball  
 Baseball  
 Latin Club  
 Romance Language Club  
 Radio Club  
 Track Meet

**Emily Fithian**  
 "Fads and Fancies"  
 Basket Ball  
 Glee Club  
 Orchestra



**Marjorie Trisler**  
 "The Idlers"  
 "The Microbe of Love"  
 "The Sleeping Beauty"  
 "Springtime"  
 "Fads and Fancies"  
 Romance Language Club  
 History Club  
 The Senate  
 Junior Cheer Leader  
 Basket Ball  
 Glee Club

**James Quinn**  
 History Club  
 Latin Club  
 "Springtime"  
 The Senate  
 Basket Ball Team  
 Radio Club  
 Football Team



**Everett Galloway**  
 "Springtime"  
 Bible Contest  
 History Parade

**Clarine Wills**  
 Glee Club  
 "Polly Wants a Cracker"  
 "Springtime"  
 "The Idlers"



**Rebecca Purnell**  
 Latin Club  
 Romance Language Club  
 Glee Club  
 "Polly Wants a Cracker"  
 "Springtime"  
 History Club



**Bernard Taylor**  
 Latin Club  
 History Club  
 Senate  
 Baseball Team  
 Radio Club





# PARISIAN



**Allison Barlow**

**Frances Clark**  
Latin Club  
History Club  
Romance Language Club  
Glee Club  
The Senate  
"Springtime"  
"Fads and Fancies"

**Henry Allen**

**Ruth Woodward**  
History Club (Vice Pres.)  
The Senate  
Romance Language Club  
"Springtime"

**Katherine Young**  
"The Idlers"  
Glee Club  
Latin Club  
"Fads and Fancies"  
History Club  
The Senate  
"Springtime"

**Vivian Wallingford**  
Basket Ball Team  
Romance Language Club  
Glee Club  
"Fads and Fancies"  
"Springtime"  
"Sleeping Beauty"  
"Idlers"  
History Club  
The Senate  
Junior Cheer Leader

**Garnett Swinford**  
"Springtime"  
Latin Club  
History Club  
The Senate

**Stella Downing**  
Glee Club  
Music Memory Contest  
Bible Contest

**Frank Bishop**  
History Parade  
Bible Contest

**Helen Connell**  
Latin Club  
History Club  
Romance Language Club  
The Senate  
Latin Tournament





# Sophomores







## Sophomore Class Officers

ROSS ADAMS.....*President*

JULIA LAVIN.....*Vice President*

DUDLEY DEAVER.....*Treasurer*

JAMES DEAKINS.....*Secretary*

### SOPHOMORE CLASS

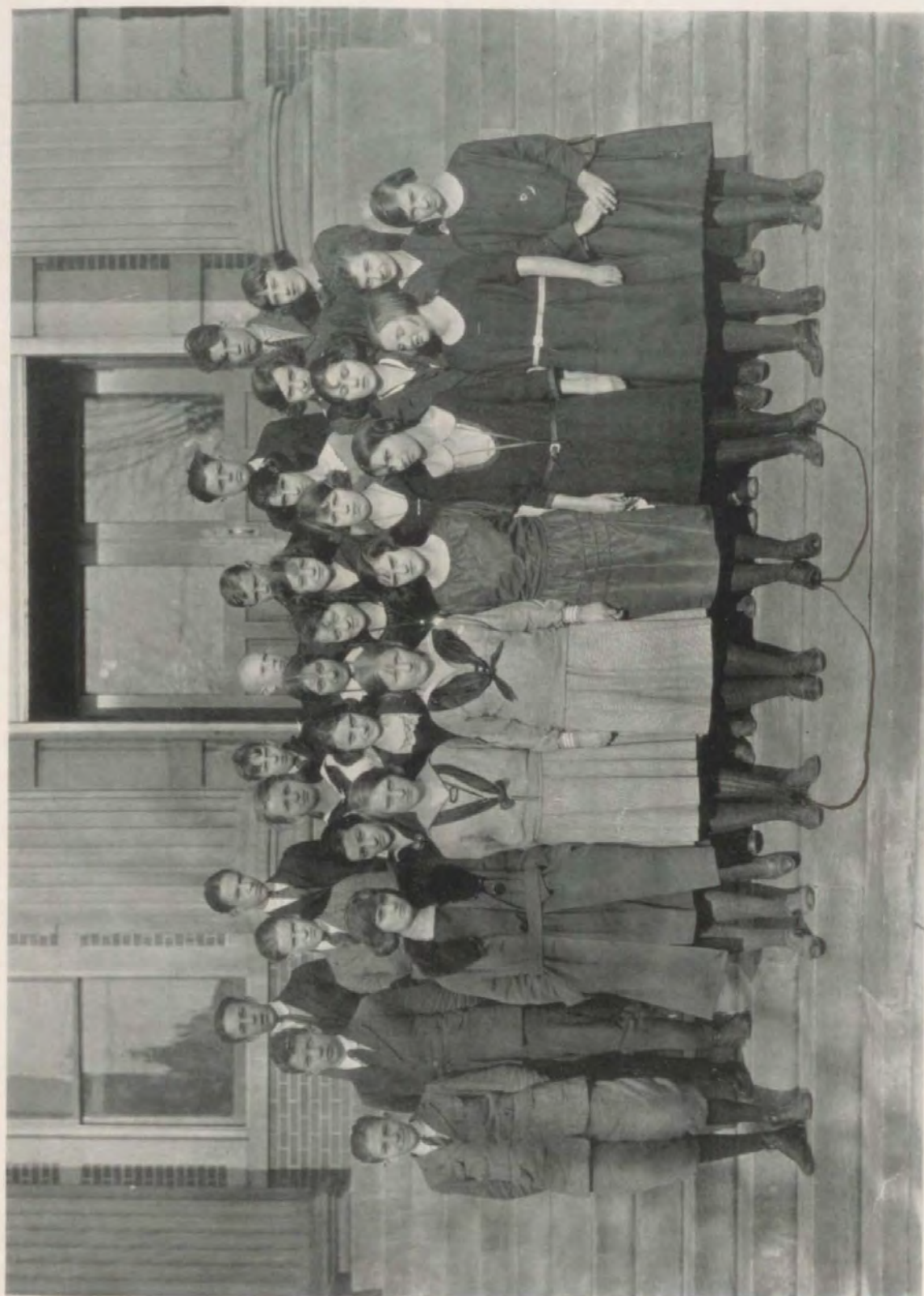
Throughout the year the Sophomore class has displayed splendid school spirit. As a whole, they have loyally supported all that the school and the other classes have undertaken. As a class, they have successfully carried out the following activities:

Class play—"Polly Wants a Cracker," presented by two casts on February 10 and 11.

A contest for songs and yells.

The publication of the Song and Yell Books.





SOPHOMORE 1A





# PARISIAN



SOPHOMORE IIA





SOPHOMORE B





# PARISIAN



MOMENTS OF STUDY





# Freshmen







## Freshmen Class Officers

E. K. RICE.....*President*

JOHN F. YOUNG.....*Vice President*

DOROTHY FRYE.....*Treasurer*

MARY LOUISE SANTEN.....*Secretary*





FRESHMEN IA





# PARISIAN



FRESHMEN IIA





FRESHMEN IB





# PARISIAN



FRESHMEN IIB





## The Graded School Faculty

It is unusual in the annals of school history to find the pictures of the graded school teachers in the annual issued by the Senior Class of the High School.

The Senior Class of the Paris High School considers it a distinct honor to publish the pictures of the Grade Faculty in the 1923 *PARISIAN*.

There is no more important part of the entire school course than the grades preceding high school. The way a student performs his or her work in the grades largely determines what his success will be in high school and college. We doubt seriously if there can be found in any school system in the South a graded school faculty comparable in all respects to the one assembled in Paris. They are well-trained, well-equipped with natural endowments for the profession of teaching, and possess Christian characters and attractive personalities that mean so much to children during the ages that they are passing through the grades. Just how much this graded school faculty is worth to the city of Paris and Bourbon County cannot be estimated during this generation. They are performing a service, and making a contribution to Christian civilization that will enrich the lives of the future citizens of this city and county for generations to come.

The Senior Class desires to acknowledge the debt that it owes to the members of this Faculty, and as we pass out from the Paris City School with the close of this school year, we desire to express our sincere gratitude to the teachers in the grades who have had so much to do with whatever efficiency, achievement and happiness we attain in life.





# PARISIAN



MISS SALLIE WHALEY

MRS. ADA FISHBACK

MISS ALMA RICE

MRS. MAUDE BRIGGS

MISS BESS PURNELL

MISS BLANCHE LILLESTON



# PARISIAN

MISS SADIE JOHNSTONE

MISS JULIA CLARK

MISS ANNA POWELL

MISS ANNA FANELL

MRS. E. L. STONE

MISS MAUDE TAYLOR







# PARISIAN



MISS CLAIRE BRANNON

MISS MAY AMMERMAN

MISS LENA TALBOTT

MRS. JESSIE HARRIS

MISS AGNES PURNELL

MISS MARY LAYTON



# PARISIAN



EIGHTH GRADE





# PARISIAN



SEVENTH GRADE



# PARISIAN



MOMENTS TO SPARE

*Sixty-three*



# PARISIAN



MOMENTS OF ACTION





# Athletics







# PARISIAN



THE SQUAD





## Football

The football team that represented Paris High in the season just closed was one of the best teams we ever had. Incidentally, it was one of the best in the state.

We won a great majority of the games played, Cynthiana and St. Xavier of Louisville being the only high schools to beat us, and then only by very close scores. We succeeded in holding the State College Freshmen to a small score, besides this we played Somerset off her feet and came mighty close to winning, but the mountain boys were too heavy for our line, and the game ended in a tie, seven all.

CAPTAIN HARMON TAYLOR, *Fullback*

"Hank" was one of the most competent leaders we have seen for a long time. He played at fullback and never failed to plough through for a yard or two, when a first down was needed. Taylor is a Senior, and will be sorely missed next year.

ROBERT DALZELL, *End*

"Little Bobbie" is a holy terror at tackling. He was a very consistent player and well liked by all the team. Bob is a Junior, so we will not lose him next year.

JOHN COUGHLIN, *Tackle, End*

"Butch" is one of the finest tackles in high school football. He has played two years, and we hope to see him next year tearing up things at left tackle.

CHESTER STROTHER, *Guard*

"Ches" was Paris' best bet for all-state. He never failed to make a hole in the line or to block an opponent out. Strother has played two years.

GEORGE ROSE, *Center*

"George" was one of the most feared—by the opposition—of the whole team. His 215 pounds of bone and muscle made the rest of the team look like toys. George is a Junior, and has another year to play.

JOHN ALEXANDER, *Guard*

"Alex" was one of the youngest members of the team, being a Freshman. He showed rare ability in the line, and we predict great things for him in the future.

LEONARD McCANN, *Tackle*

"Mac" was a veritable tower of strength in the line. He is a Senior and we hope to read about him as a college player next year.

JAMES DEAKINS, *End, Quarterback*

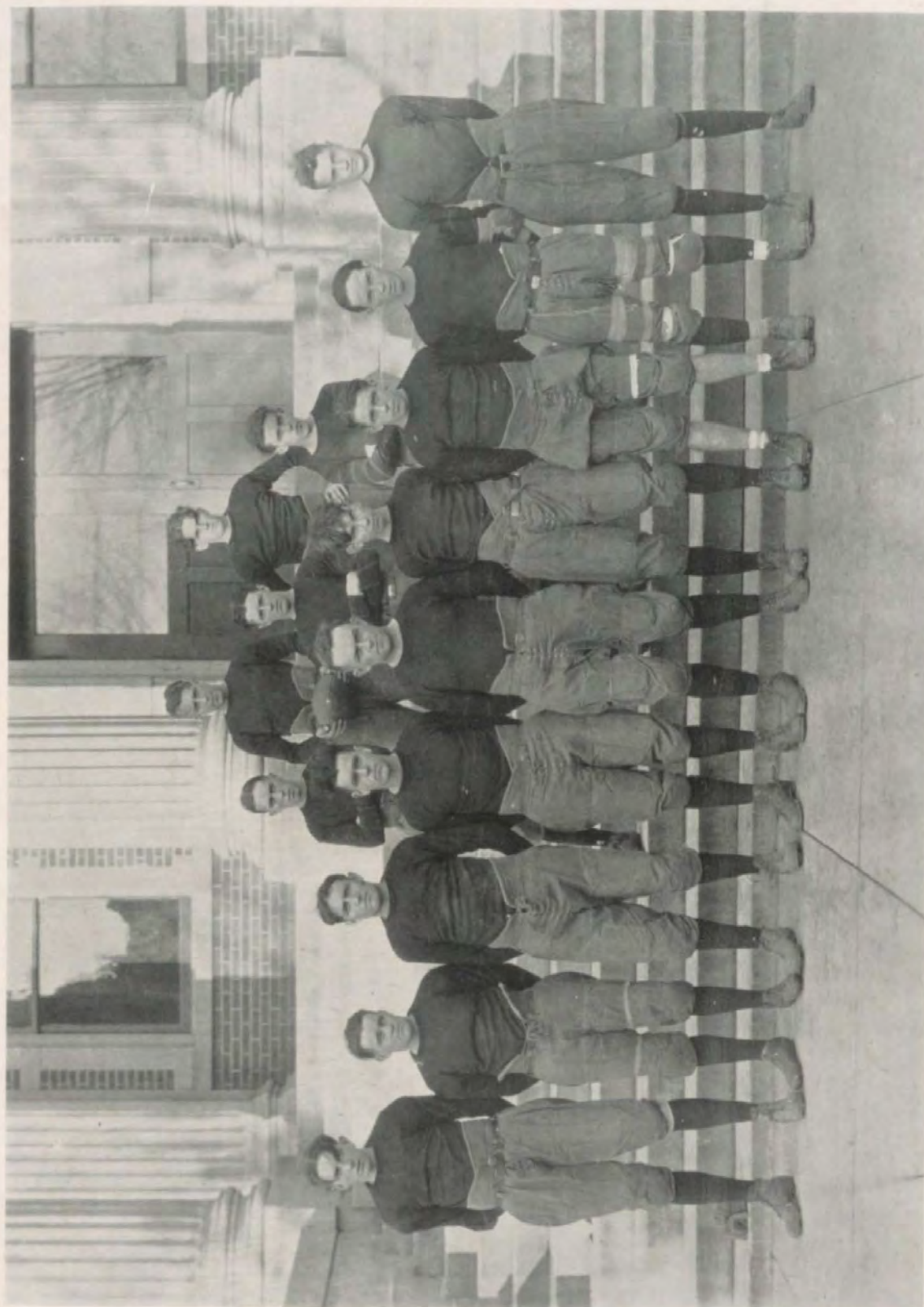
"Deak" hails from Eminence, and we are mighty glad that he pursues his studies at P. H. S., for he is a mighty good player. He is a Sophomore.

RALPH CONNELL, *Quarterback*

"Stiffy" made one of the best field generals that ever piloted a Paris team to victory. He was in the game from the first whistle till the end of the last quarter. Ralph is a Senior.



# PARISIAN



THE TEAM





# PARISIAN

CRAIG TUCKER, *Halfback*

"Tuck" was one of the finest backs we have ever seen. Fast and shifty, he was a hard man to stop. Craig has played four years.

WARREN NASH, *Halfback*

"W. O." was the other mainstay in the backfield. He was always a cheerful worker and certainly could tear things up in the line.

FRANCIS ROURKE, *Guard*

Although handicapped by an injured knee during most of the season, Frank was a consistent player. He is a Senior, and will be missed next fall.

GEORGE DUNDON, *Fullback*

Whenever he was called upon, George could always deliver the goods. He is in the Senior class and will hit the line for a college team some day.

JOHN WILLIAMS, *End*


"John" always showed up well when given a chance. He graduates this year, and we hate to lose him.



SECOND TEAM



# PARISIAN




MOMENTS BETWEEN ACTS

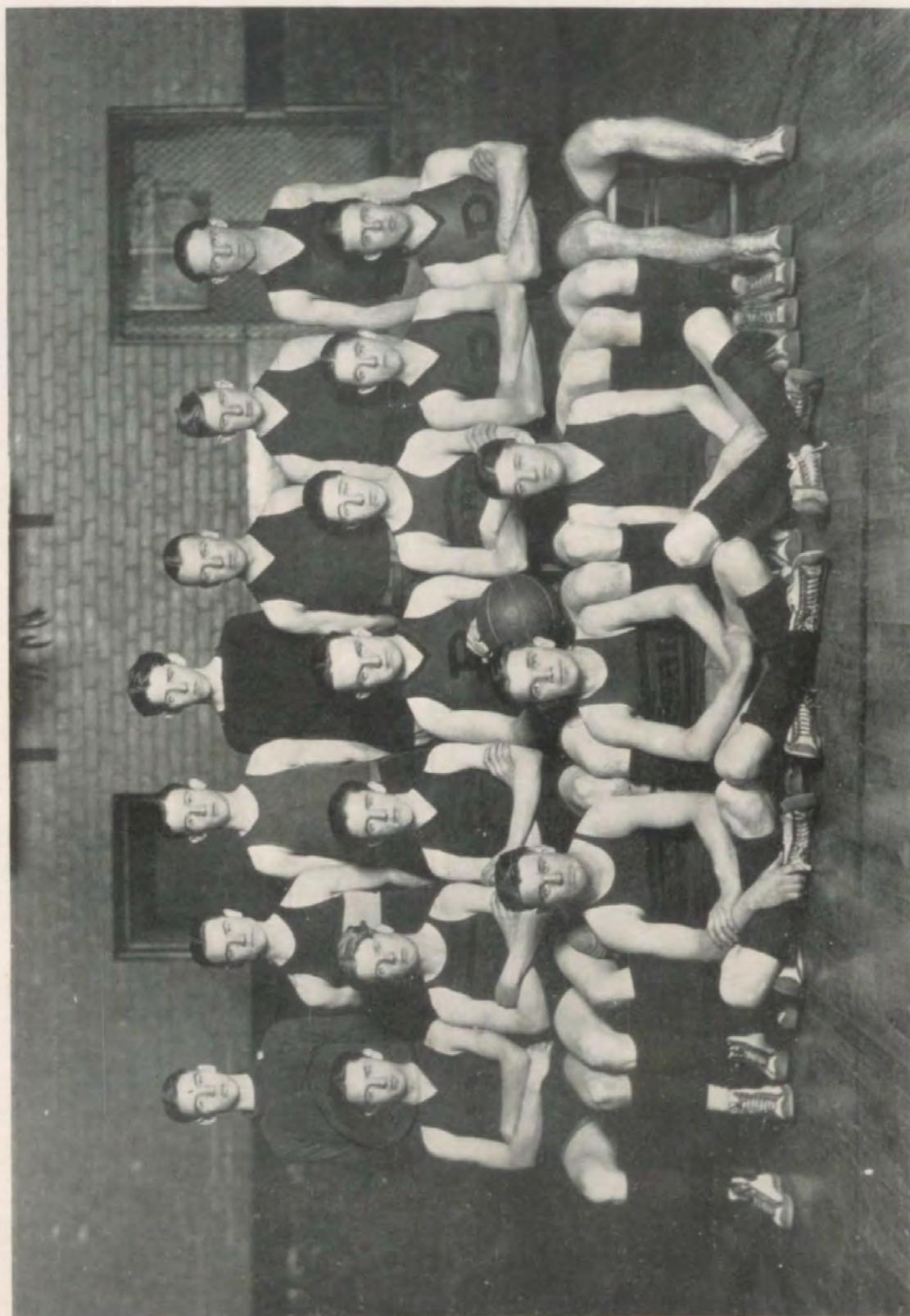


# PARISIAN



MOMENTS OF THRILL



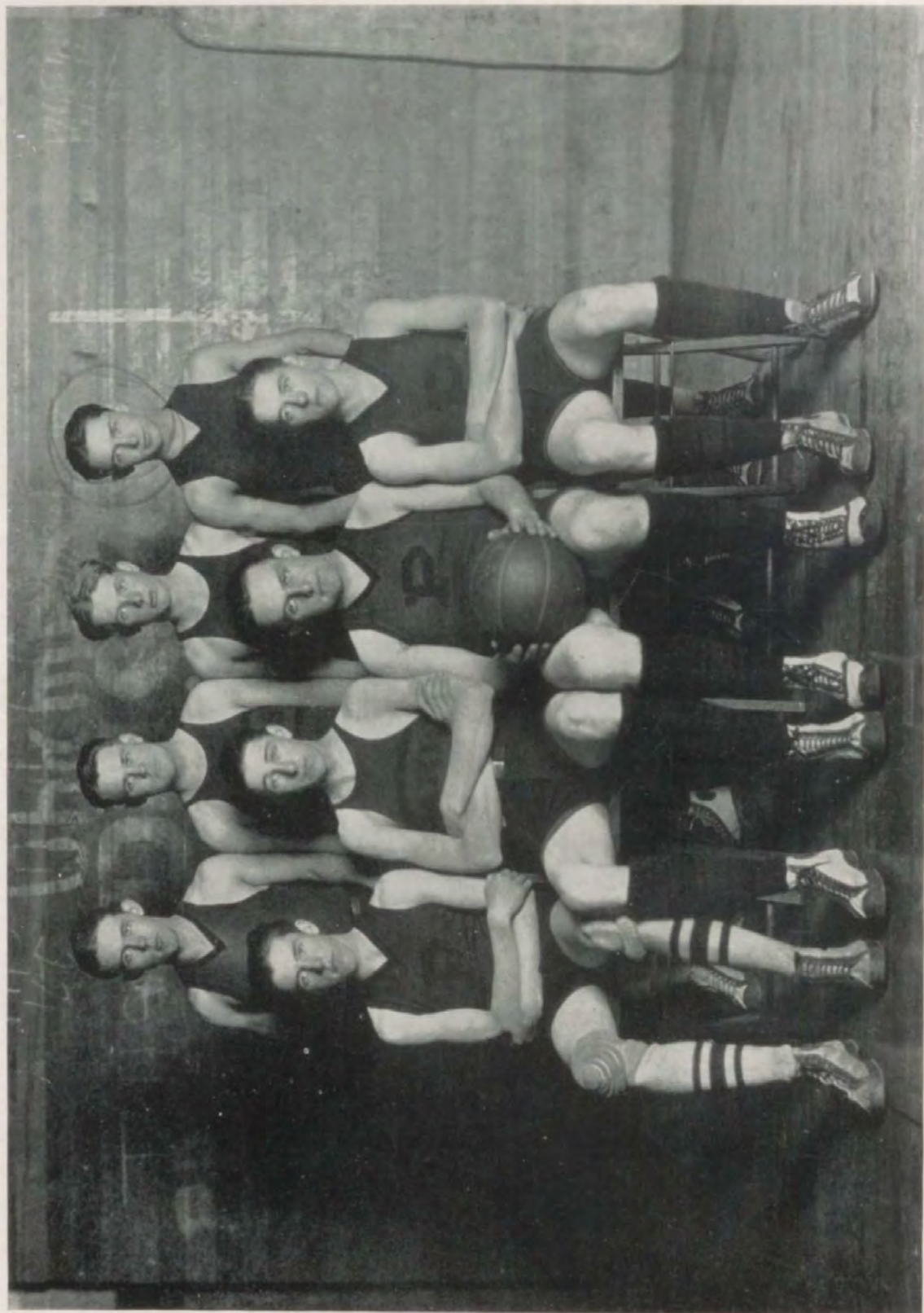


BASKET BALL SQUAD





# PARISIAN



THE BOYS' BASKET BALL TEAM





## Boys' Basket Ball Team

Our team was fortunate this year in having as their coach, Mr. C. C. Dawes, an old Georgetown College star.

Although he had few old men back, he succeeded in developing a fast, though light, team. With most of these men back next year we expect to have a winning combination.

### TEAM

ROSE ( <i>Captain</i> ).....	Guard
ARNSPARGER.....	Guard
COLLIER.....	Guard
TUCKER.....	Center
TURNER.....	Center
BROWNER.....	Forward
CAHAL.....	Forward
McCARTY.....	Forward

---

## Girls' Basket Ball Team

### RUBY HALL, *Running Forward (Captain)*

Ruby truly deserves the title Captain, for in each game she not only played a calm game herself but did much toward keeping the entire team with level heads, and a determination to fight. This was her third year and her record for making goals has been a splendid one. She is known as one of the most graceful players in central Kentucky. She played a good clean game and was always both dreaded and liked by her opponents.

### FRANCES ANN STEENBERGEN, *Back Forward*

Frances Ann—Keeping her opponents busy, was known for her quickness and lightness. She had good floorwork and improved throughout the season. We hope you will continue your basket ball career in college as well as you have in High School. We hate to give you up, Frances Ann!

### MARGARET SANTEN, *Center*

This is Margaret's first year and she has made a creditable showing. In every game Margaret was in the thick of the scrimmage and she could be depended upon to get the ball from her opponents. We are glad she will be with us again next year. We're sure she will be a splendid player.

### VIVIAN WALLINGFORD, *Back Guard*

"Vive" was the "pep" of the team and her work as back guard was very commendable and she was almost a team by herself. She will be another player for next year and we look for great work from you, Vivian!





GIRLS' BASKET BALL TEAM

EDNA ROSE, *Running Guard*

"Peggy" plays running guard and is always ready to do her part. She not only holds her opponents but surprises them by making goals herself. She has been one of the main factors of the team for two years and we look forward to her being with us next year.

MARJORIE TRISTLER

"Dot" is good at either forward or guard. She never complained when she was asked to play in different positions, but plays where she is needed. She thought only of the team and did her part toward making the season a success.

Nettie Dalzell

Elenor Payne

Helen Roberts

Julia Lavin

Sallie Payne

Rebecca Collier

Alberta Myres

Ruth Lovell

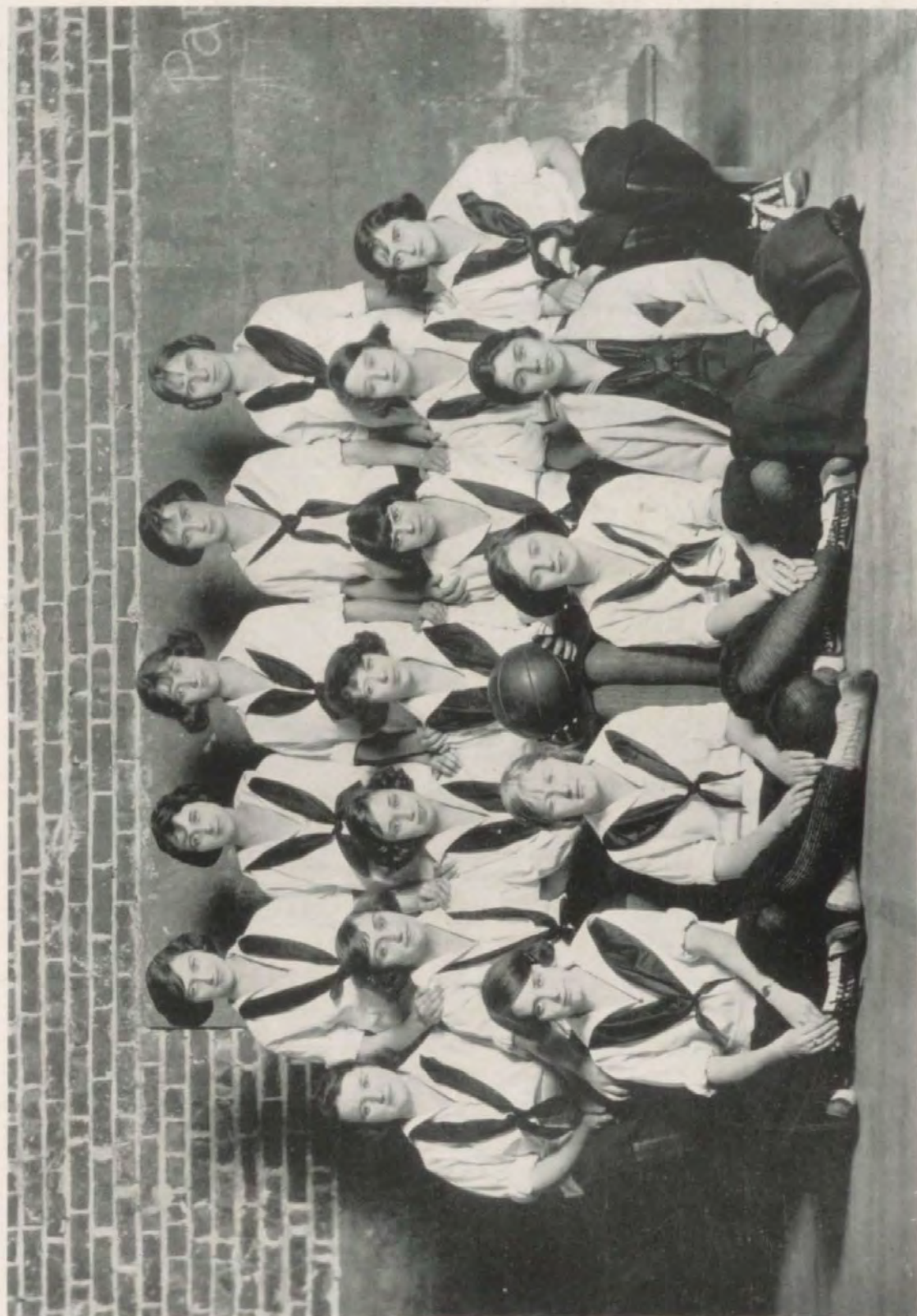
Berniece Calvert

Opal Mallory

These girls were always ready to do whatever they were asked for the improvement of the team. Each one of them acted as substitute in at least one game. Most of these girls will be splendid material for next year.

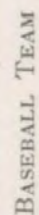
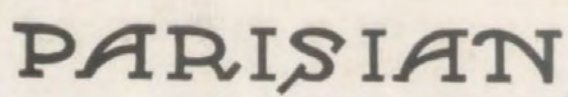
The dropping of R's and laziness are considered two characteristics of the South but only by the first, can you tell Miss Robins came from Mississippi. She has been tireless in her efforts to place our girls on a higher standard of athletics and has been very successful with the basket ball team and gymnastics for the entire school. Miss Robins is always busy and is one of the most industrious teachers we have ever seen and is liked by every one of the students.





THE GIRLS' BASKET BALL SQUAD









## Baseball

Heretofore baseball has been one of the minor sports in Paris High School. Football, basket ball, and track have smothered it almost out entirely, but it has found its way out again, and ranks evenly with football this year. Only two games have been played to the present date: North Middletown High School—score, 19-2; and University of Kentucky Model High School—score, 6-0, with Paris carrying the long end of both scores.

Several of last year's players are back, and there is plenty of promising new material. Prof. Shaw has fitted out a team which, from all appearances, will have a high percentage of wins.

The pitching staff is one of the features of the team. Christman, the husky southpaw, star hurler of last year's team, looks even better this year. Hance, a right-hander who came to Paris Hi from Eminence High School, has already demonstrated his ability by pitching fourteen innings and allowing only one hit. With him on the mound, backed by the rest of the team, led by Captain John Williams, the rangy first-sacker of last year's squad, we are confident of a winning team.

### PLAYERS

DALZELL, *Catcher*

DEAKINS, *Second Base*

FUDOLD, *Third Base*

ALEXANDER, *Center Field*

TERRY, *Center Field*

\*WILLIAMS, *First Base*

JENKINS, *Short Stop*

McCANN, *Right Field*

TAYLOR, *Left Field*

CHRISTMAN, *Pitcher*

HANCE, *Pitcher*

\**Captain.*

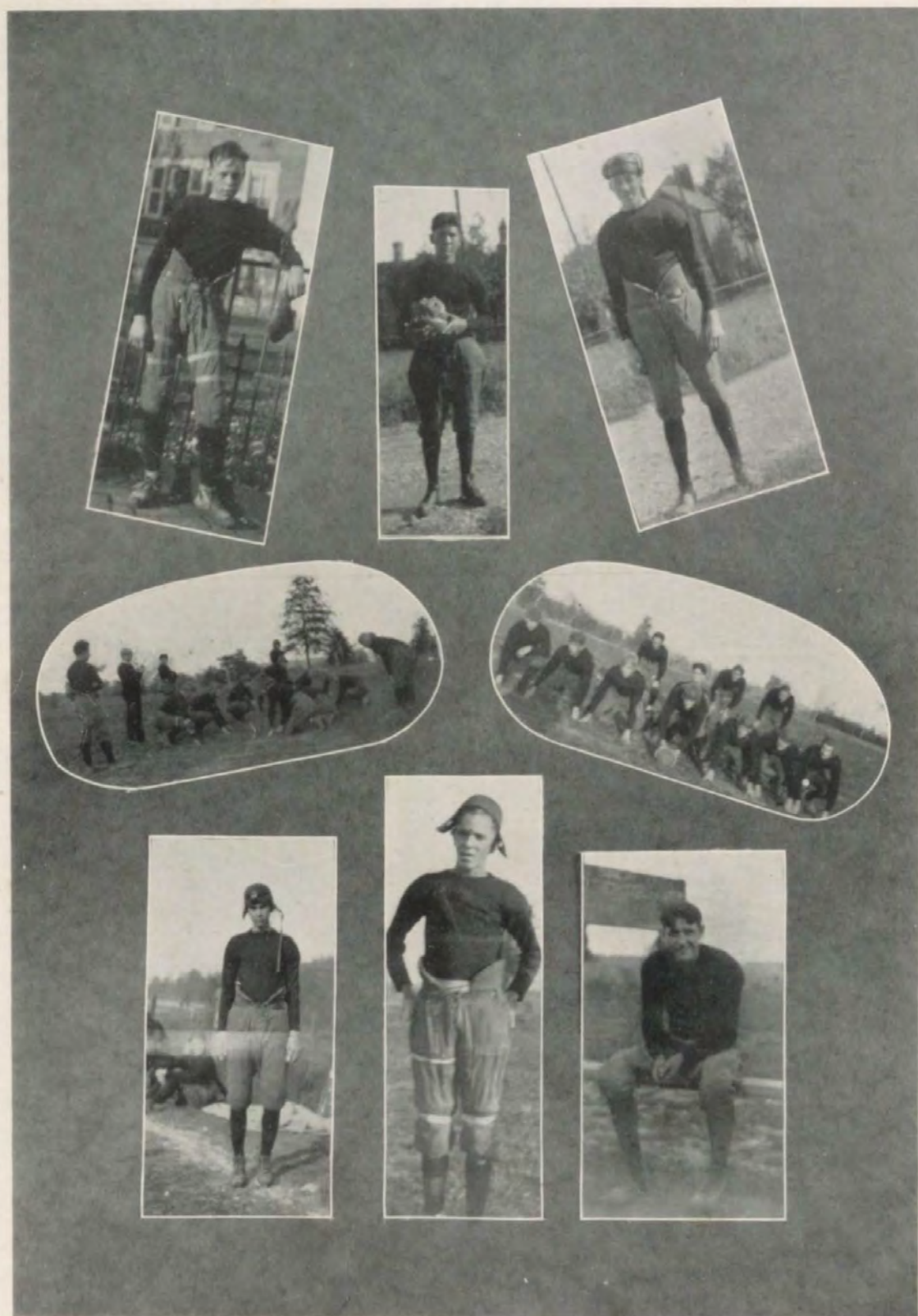
### SCHEDULE

APRIL 6—	North Middletown High School.....	At Paris
APRIL 13—	Model High School.....	At Paris
APRIL 20—	Cynthiana High School.....	At Paris
APRIL 26—	Falmouth High School.....	At Paris
MAY 4—	Georgetown High School.....	At Paris
MAY 10—	Cynthiana High School.....	At Cynthiana
MAY 18—	Lexington Senior High School.....	At Paris
MAY 25—	Clark County High School.....	At Paris
MAY 29—	Open	
JUNE 5—	Open	
JUNE 8—	Open	



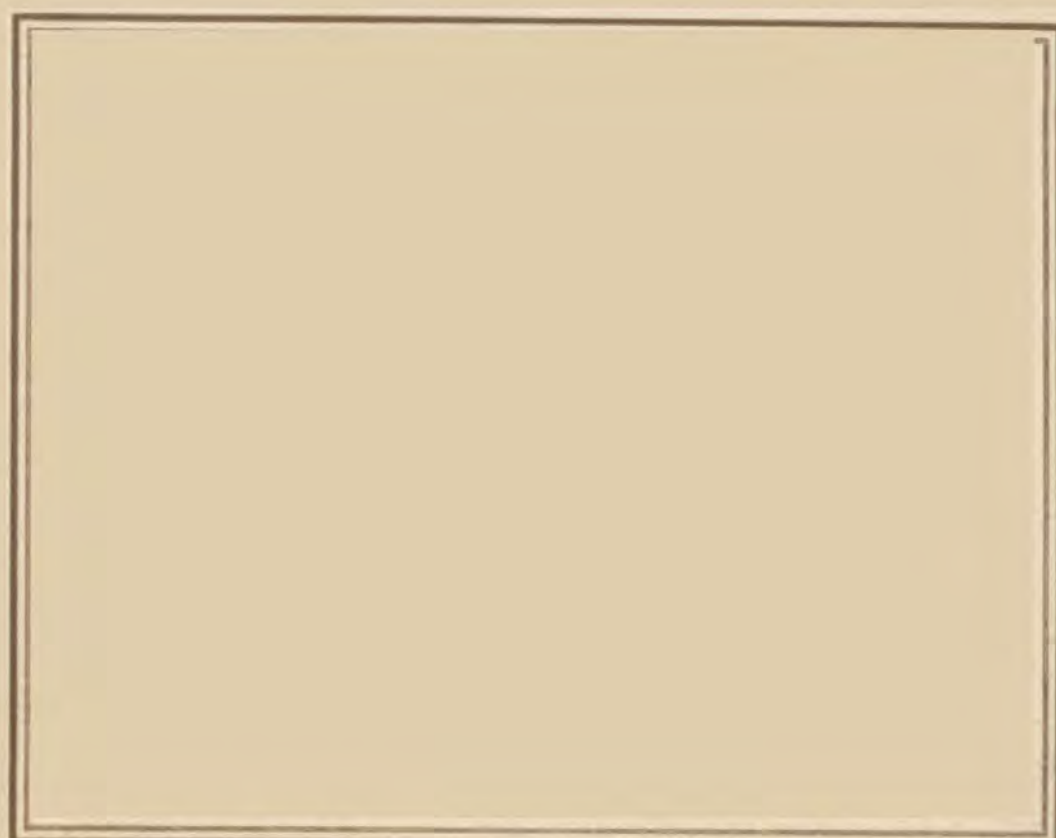


# PARISIAN



MOMENTS AFTER





**Organizations**









## LATIN CLUB

# Latin Club

MOTTO—"Esse Quam Videri" ("To Be Rather Than to Seem")

## OFFICERS

President.....	Martha Collier—Helen of Troy
Vice President.....	Leslie Smith—Apollo
Secretary.....	Ruth Wheeler—Venus
Treasurer.....	Billy Kenney—Catiline

## MEMBERS—

Fifty Juniors and Seniors.

## ACTIVITIES—

Publication of the "Parisian Oracle" (monthly)  
 "The Corsican Brothers" (picture) January  
 Valentine Party February  
 Latin Exhibit March  
 Latin Tournament of Kentucky May


## AIMS—

To Increase the Study of Latin  
 To Enlarge Our Knowledge of the Ancients  
 To Promote Scholarship in All Studies  
 To Make Paris High School the Best

## RULES—

Only Juniors and Seniors may be members.  
 Every member must make a passing grade in every subject.  
 He must support all school activities.  
 He must stand for what is right at all times.





# PARISIAN



## THE STAFF

### "The Parisian Oracle"

#### STAFF

<i>Editor</i> .....	TOM SPICER
<i>Assistant Editor</i> .....	EDNA EARL BURNS
<i>Exchange Editor</i> .....	BERNICE CALVERT
<i>Business Manager</i> .....	ANITA OVERBY
<i>Joke Editor</i> .....	RUTH WHEELER
<i>News Editors</i> .....	RUBY HALL—FRANCES ANN STEINBERGER

February, 1922—Bang! The first appearance of the PARISIAN ORACLE.  
Five successive issues for 1922.

October 1922-1923—Hurrah! The first issue of the "Oracle's second year.  
Ten issues monthly for 1922-1923.

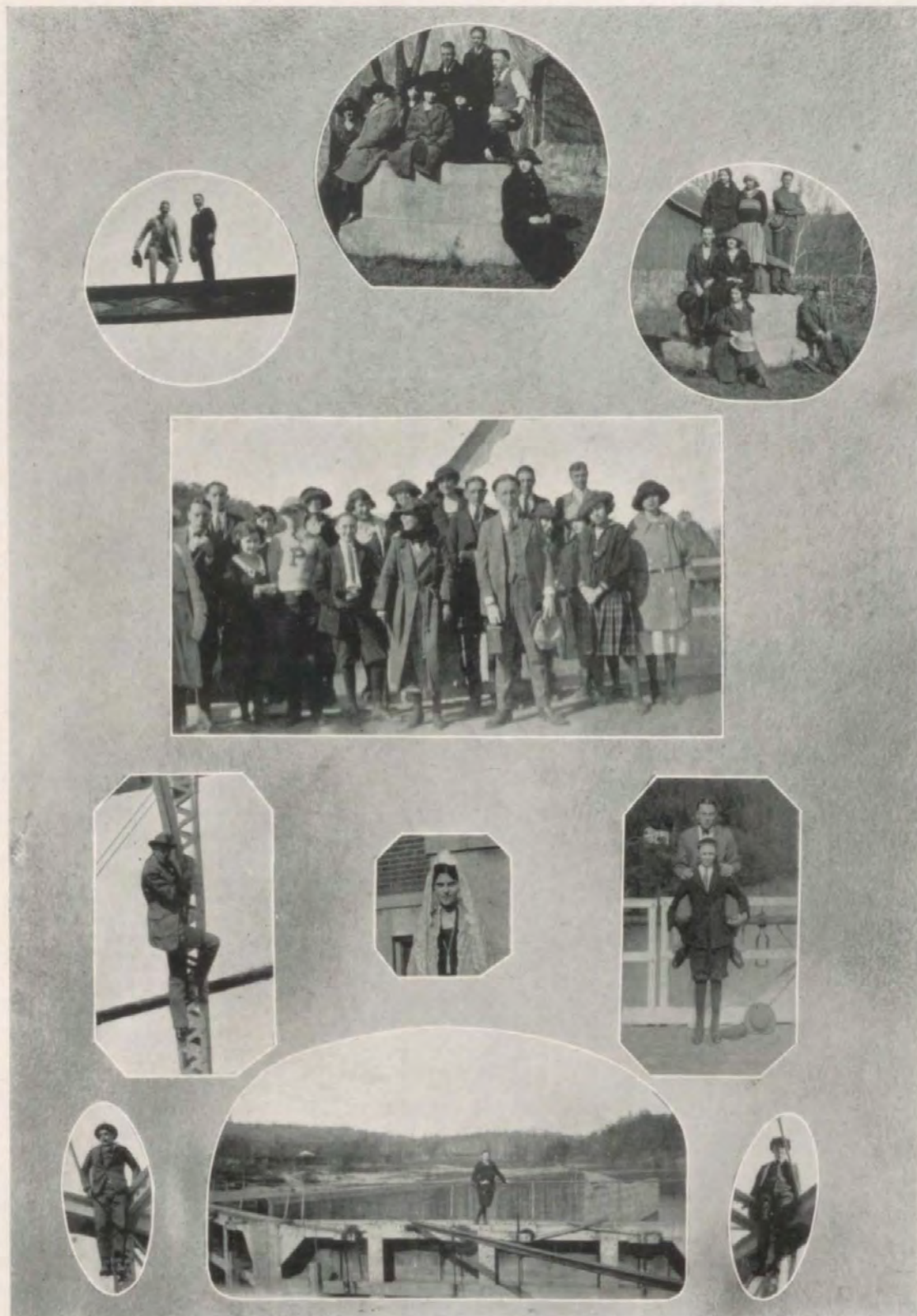
Published by the Latin Club of Paris High School.

Organ of Paris High School and Latin Club.

Supported by seventy-five per cent of the student body.



# PARISIAN



HISTORIC MOMENTS





HISTORY CLUB OFFICERS

## By-the-Wayside History Club

Landor, one of the great poets—one of the few poets—who *would* get out of the beaten path, made a name for himself by considering the little things that so many of the near-great never see.

History is most interesting, if from time to time, it takes the bypaths. This is the purpose of the By-the-Wayside History Club to go into the lanes, into the mounds, into the realm of romance, and into the thought of the fascinating lecturers.

### ACTIVITIES

NOVEMBER 11.—Armistice Day—Parade consisting of two floats—one representing the "Big Four"—Wilson, Clemenceau, Lloyd George and Orlando; the other showing the result of the Eighteenth Amendment.

NOVEMBER 20.—Trip to Blue Licks.

DECEMBER 24.—Play in chapel "The Bird's Carol" with a present to everybody in the high school.

JANUARY 20.—Trip to the home of Henry Clay.

FEBRUARY 2.—A day at Boonesborough.

MARCH 3.—Lecture—Miss Jewell. Subject "By the Waysides in Life."

MARCH 15.—Dr. Funkhauser "Ancient History in Kentucky."

APRIL 12.—Opening of the Indian Mound on Mrs. Highland's farm.

APRIL 15.—Miss Orr in a lecture on "Bardstown."

MAY 5.—A trip to Bardstown.

JUNE 3.—Reception to the By-the-Wayside History Club reunion.



# PARISIAN



MOMENTS LONG, LONG AGO





# PARISIAN



JUST MOMENTS





## The Romance Language Club

<i>President</i> .....	ALBERTA MYERS
<i>Vice President</i> .....	GAYLE BROWNE
<i>Secretary</i> .....	MARJORIE TRISLER
<i>Treasurer</i> .....	FRANCIS CLAY

The Romance Language Club was organized March 15, 1923, with an enrollment of forty-five members. It is composed of those students who have successfully completed a semester's work in French or Spanish.

The purpose of the club is to increase the interest in the study of French and Spanish, and to familiarize the members with the literature and customs of France and Spain. The membership of the club is divided into two departments—the French Department and the Spanish Department. A program is presented once a month by each of the Departments.

Due to its late organization, the club has not been able to undertake many activities. The activities this year consist of a French play, entitled, "Les Deux Sourds," presented by the Senior French class, with both an English and a French cast, and a publication in French and Spanish.

Although it is a new organization, the success of the club is assured, and we can readily see that it will soon rank as one of the peppiest clubs of P. H. S.





# PARISIAN



HOME ECONOMICS—COOKING CLASS





## The Home Economics Department

The Home Economics Department has grown this year. It now has two teachers, one for foods, and one for clothing. The study of foods, consisting of buying, preparation, serving of meals, and elementary dietetics, is taken one semester; and clothing, consisting of the study of materials, the making and valuation of garments, and millinery, is taken the other semester.

We have most capable teachers for this department, and it is through their plans and efforts that the classes have accomplished so much. Besides the regular training which the students have received in cooking and sewing, they have had many activities which made the work very interesting, such as serving teas, luncheons, and dinners to the faculty, school board, and organizations.

A night class in millinery was conducted for the benefit of the women of Paris who desired work in this department, and much interest was shown by attendance and by work accomplished.

There were one hundred and twenty pupils in the Clothing Department, and ninety in the Food Department this year. The girls taking this work are preparing to become efficient and skilled home-makers.





# PARISIAN



HOME ECONOMICS—SEWING CLASS





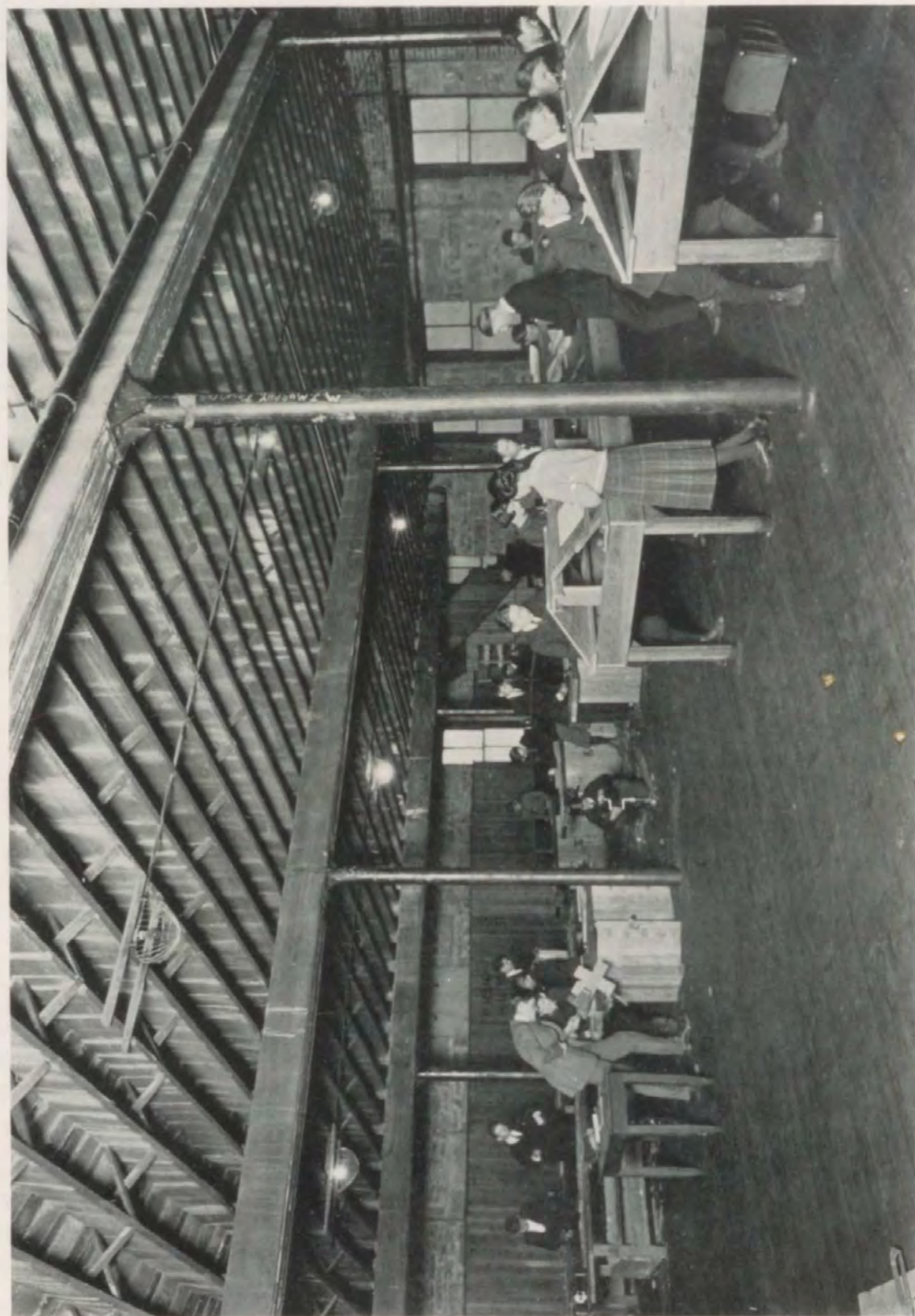
## Commercial Department

The Commercial Department is one of the best branches of our High School. Under the capable supervision of Miss Ernestine Fields, splendid progress has been made. Seventy-five pupils in our High School are taking work in this department, which offers bookkeeping, shorthand, typewriting, etc. Besides this, night classes have been conducted throughout the year for the citizens of the town who desire this kind of work, and over twenty-five have taken advantage of this opportunity this year.





# PARISIAN



MANUAL TRAINING—MECHANICAL DRAWING DEPARTMENT





## Debating Team

A team of girls, one Senior and two Juniors—Martha Collier, Georgie Adams, and Martha Connell. What can it do?

Debate the question: "Resolved that adjusted compensation embodying the four-fold option plan offered by the American Legion should be granted to our soldiers of the World War by the next Congress."

Paris takes the affirmative side against Cynthiana, representing the negative, March 12, in Paris.

Winner? Paris team.

Paris takes the negative against Georgetown, as the affirmative, March 26, at Paris.

Winner? Paris team.

Paris takes the negative against Frankfort, the affirmative, April 3, at Frankfort.

Winner? Paris team.





## The Staff

MARTHA COLLIER.....	<i>Editor-in-Chief</i>
FRANCIS ROURKE and TOM SPICER.....	<i>Associate Editors</i>
ANITA OVERBY and RALPH CONNELL.....	<i>Business Managers</i>
ELLEN SCOTT.....	<i>Kodak Editor</i>
RUTH WHEELER.....	<i>Joke Editor</i>
ELMER BURNETT, MARY F. KISER, CRAIG TUCKER.....	<i>Art Editors</i>



# PARISIAN

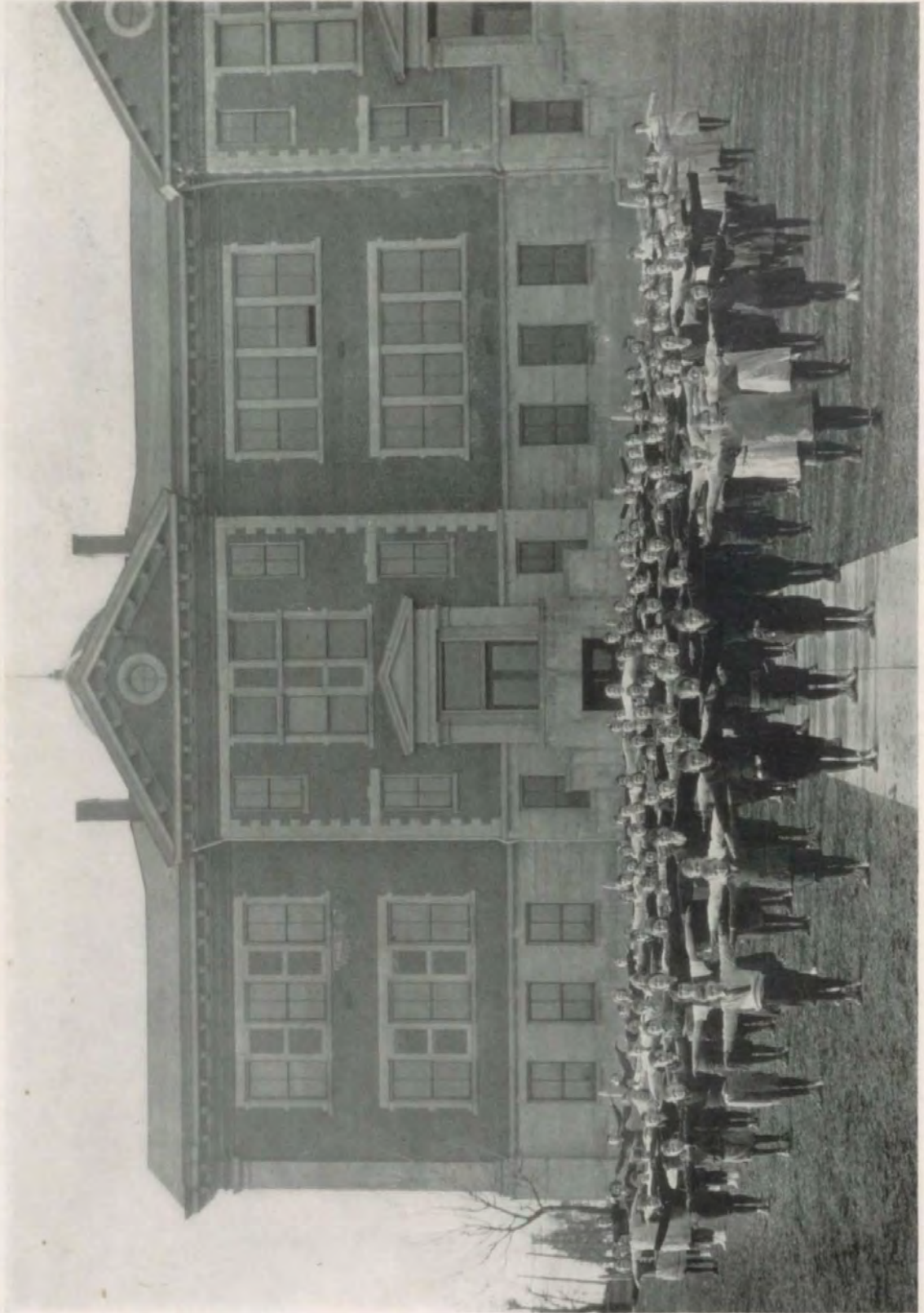


MOMENTS LOOKING FORWARD





# PARISIAN



CLASS IN PHYSICAL EDUCATION





"CHEER LEADERS"

## "My Girl's from Old Kentucky"

My girl's from old KY.  
 She goes to Paris High.  
 She is a Queen o' mine,  
 I'm telling you.  
 And in my future life  
 She's going to be my wife!  
 How in the world did you find that out?  
 She told me so!

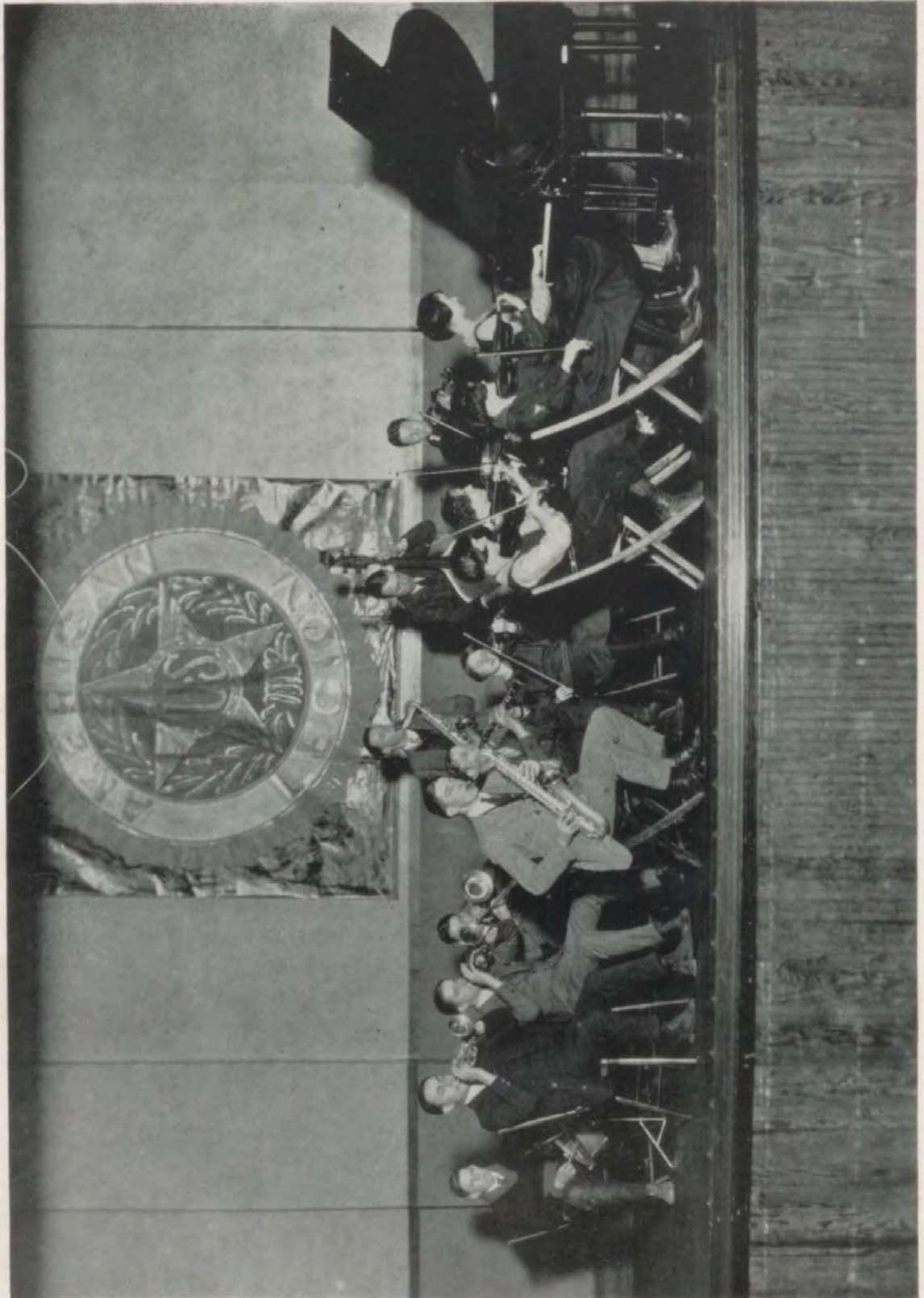
She goes to all the games;  
 I furnish all the change.  
 She and the other dames  
 They all go, too.  
 And in my future life  
 She's going to be my wife!  
 How in the world did you find that out?  
 She told me so!

When she grows older,  
 She will grow bolder,  
 And I will hold her  
 Close to my shoulder.  
 And in my future life  
 She's going to be my wife!  
 How in the world did you find that out?  
 She told me so!





# PARISIAN



THE ORCHESTRA





## Girls' Glee Club

The Girls' Glee Club is one of the live wire organizations of the High School. The members are prepared to contribute numbers ranging from folk songs to grand operas at a moment's notice. They have assisted the Music Department of the Woman's Club, meetings of the State Classical Association, State English Association, and various lecturers who have appeared at the High School.

Almost half of our enrollment is made up of Seniors, and we shall miss them sorely, but the splendid work and loyal co-operation which they have always given will be an example and an inspiration to the under-grads.

The Glee Club gives an annual concert in May, and this year they were assisted by the Senior High orchestra.

The members of the club are as follows:

MISS ELLEN BLANDING, *Directress*

Ruby Hall  
Anita Overby  
Josephine Adams  
Martha Collier  
Ona Lee Stone  
Kitty Young  
Vivian Wallingford  
Opal Mallory

Frances Clarke  
Evelyn Allen  
Edna Rose  
Eleanor Payne  
Ruth Wheeler  
Ethel Shanklin  
Elizabeth Weathers  
Dot Trisler

EDNA EARLE BURNS, *Accompanist*

Clarine Wills  
Thelma Colliver  
Stella Downing  
Margaret Cleveland  
Rebecca Purnell  
Ruth Tabor  
Eloise Alexander  
Trella Collins





# PARISIAN



## "Polly Wants a Cracker"

SOPHOMORE CLASS PLAY

"Polly Wants a Cracker" was presented by the Sophomore Class on the evenings of February 10th and 11th. The cast of Friday night's performance was:

Marie Pratt Wayne.....	Rebecca Purnell
Nora.....	Clarine Wills
Mary Wayne.....	Sarah Bradley
Lucerne Neville.....	Ida Lee Wheeler
Jeffrey Wayne.....	Michael Fudold
Thomas Livingston Pratt.....	Everett Hall
Inspector Doran.....	Walter Collins

Saturday night's cast:

Marie Pratt Wayne.....	Rebecca Collier
Nora.....	Lucille Wills
Mary Wayne.....	Julia Lavin
Lucerne Neville.....	Elizabeth Gaitskill
Jeffrey Wayne.....	George Browner
Thomas Livingston Pratt.....	Holt Henry
Inspector Doran.....	William Hinton

Both casts gave splendid interpretations of the comedy and displayed unusual dramatic ability.





# PARISIAN



## Literary

*Ninety-nine*



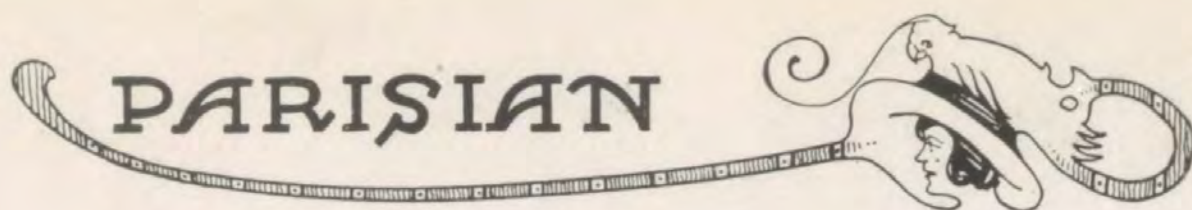


# PARISIAN

## Calendar

- SEPTEMBER 14—P. H. S. walls filled with anxious (?) students.
- SEPTEMBER 21—Sarah and Blanton indulged in a friendly chat the entire noon hour.
- OCTOBER 12 and 13—Auction held by the Senior History Club.
- OCTOBER 20—Football game with St. Xavier.
- OCTOBER 28—Leslie sneezed in French class, causing a general uproar.
- NOVEMBER 11—Armistice Day parade.
- NOVEMBER 28—"The Freshman," presented by the Freshman class.
- DECEMBER 8—"Little Shepherd of Kingdom Come," presented in the auditorium.
- DECEMBER 21—The Seniors entertained the High School in the auditorium.
- Anna Louise Sauer starred in "The Birds' Christmas Carols."
- JANUARY 2—Rev. Smiley spoke in chapel.
- JANUARY 5—PARISIAN ORACLE staff elected.
- JANUARY 21—In the mad rush to get home to lunch early, Bernice Calvert pulled the brim of her hat off the crown.
- JANUARY 23—Mr. Charles McMurray lectured on "Education." The Home Economics Department served tea in his honor.
- FEBRUARY 6—Senior By-the-Wayside History Club visited "Ashland." We will never forget that bountiful lunch.
- FEBRUARY 9 and 10—The Sophomores displayed their marked talent in the presentation of "Polly Wants a Cracker."
- FEBRUARY 14—The Latin Club entertained with a "kid" party in honor of the Girls' and Boys' Basket Ball Teams.
- FEBRUARY 20—Martha drove Rene around town all afternoon—gas 25 cents per gallon. Dot in despair.
- MARCH 7—Home Economics Department served dinner in honor of Dr. Winship, who lectured in the auditorium.
- MARCH 15—The Freshmen were entertained with a St. Patrick party.
- MARCH 22 and 23—"Springtime" was presented by the students under the auspices of the Junior class.
- MARCH 29—Dr. Snedden, who lectured on "Education," was guest of honor to a dinner served by the Home Economics Department.
- APRIL 3—Carolyn Wilmoth received a nine-page letter from????
- APRIL 6—P. H. S. baseball team was victorious over the North Middletown team.
- APRIL 10—Pete displayed a great deal of wit "unconsciously."
- APRIL 13—Dismissal for spring vacation.
- MAY 4—Meeting of Kentucky English Teachers at P. H. S.
- MAY 12—The Latin Club entertained the members of the Classical Association and the candidates in the Latin Tournament.
- JUNE 7—The Seniors step into the cold, cruel world to begin the battle with life.





## Class Prophecy

For a long time Allahabad gazed into his magic crystal of sparkling glass. The silence was piercing, but at length the aged prophet spoke:

"Looking into the dim and prophetic annals of the future, I behold many noble and illustrious personalities which I identify as those graduates of the class of '23, the future of whom you requested me to investigate.

"First I behold a large theatre, Keith's Palace in New York. The entire audience is held in spellbound silence by the new sensational vaudeville comedy, 'The Two Bachelors,' in which I see Raymond Turner and Robert McCarty participating in the leading roles, assisted by Mary Petree, the toe dancer of world-wide renown.

"Next a picture is flashed upon the screen. It is a startling romance of the North Country, in which the hero is none other than Ralph Connell, who will be admired at that time by the entire fair sex of America. And the heroine. Ah! she also is from Paris. I recognize her as Frances Steinberger, while the vamp who so relentlessly steals her sweetheart is Bernice Calvert, all of the class of '23.

"And now a court room flashes before me. Occupying the judge's chair is Harmon Taylor, hearing with impatience the case of Caroline Wilmoth, who is endeavoring to obtain a divorce from George Dundon, her fourth husband, charging him with non-support and abuse. The eminent attorney for the plaintiff is Ruth Wheeler, the first woman lawyer in Paris; while seated among the ladies of the jury are Ellen Scott and Sallie Payne.

"The arguments of bartering assail my ears, and a pawn shop appears in my crystal. The proprietor I behold as Robert Frank, with whom Thomas Spicer is engaged in bitter dispute, endeavoring to 'hock' his beloved trombone for the highest possible amount, in order that he may be able to procure an evening gown for his wife, whom I identify as Martha Collier.

"In the Presidential campaign of 1940 I see Francis Rourke, of Paris, the choice of the Republican party.

"And now the operating room of a large hospital clearly appears before me. Eagerly the surgeons, Yutaka Minakuchi and Leslie Smith, await the patient, with all in readiness for a serious operation. At last, with great skill and dexterity, the two beautiful nurses, Alberta Myers and Catherine Duncan, bring forward the patient, who is none other than James Gorey, suffering palpitation of the heart, evidently caused by the darts of Dan Cupid during a love affair with Anita Overby.

"In the nearby undertaking establishment of Gayle Browne a coffin has already been set aside in expectation (and hope) that the patient will not recover, despite the miraculous cures which the clinic has wrought.

"The P. H. S. of the future, as it appears in my sparkling crystal, is indeed changed from that of today. Professor Kirkpatrick has accepted a position as instructor of American literature at the University of Michigan, and now the school, under the able supervision of Edgar Hill, promises to be one of the best high schools in America. And no wonder, for with Ruby Taylor as the teacher of history, and Mary Frances Kiser over the department of science, it is entitled to this place. Furthermore, I see among the faculty Lillian Alexander, the principal, with Mary G. Williams the instructor in economics, and Addie Fightmaster as her assistant.

"Now I see Charles Christman. He is engaged in the poultry business, and has acquired a great love for 'chickens.'

"I behold a church filled to overflowing with an attentive audience. In the pulpit I see Blanton Collier, the eminent evangelist, who sways the minds of his congregation with words and calms their passions. The singer of the revival I identify as Leonard McCann, and at the organ, if my prophetic power is not false, I see Edna Earle Burns. And now in my crystal I see the converts coming forward. They fill the aisles in droves, but among them I ascertain the presence of Ruby Hall and Nan Deavers, two illustrious Seniors of '23.





# PARISIAN

"An office room slowly manifests itself before me, and in it I see Amanda Collins, the first lady Justice of the Peace in Paris. She has just finished binding Frances Brown and Elmer Burnett in holy wedlock. This is the fortunate groom's third embarkation upon the sea of matrimony. In a nearby sanitarium I behold his recently divorced wife (known to you as Katherine Taylor) slowly pining away with grief, caused by the loss of her husband's affections. Her attentive nurse is none other than Anna Howe Donnell, her former classmate.

"And now there appears in my crystal a distant land, with people having almond-shaped eyes and their bodies clad in silks. They flock to a building with a large tiled roof, where there is apparently some event taking place. But inside it bears the characteristics of a school, and sitting at the matron's desk is Elizabeth Wheeler, having been sent to this mission school many years before this time.

"I see Francis Clay many years from now seated behind the table in his business house. He has found that the locksmith business is paying, and that he can obtain quite a profit by repairing locks. His little wife is there, too, for she is his manager both at the shop and at home.

"The cries of newsboys assail my ears as I behold them rushing about shouting, 'Extra!' Now the paper itself appears in my wonderful crystal. On the first page is a picture of one of our classmates. Yes, it is Josephine Adams, as the headlines indicate by stating, 'Clayton Vanderbilt Weds Miss Adams, His Private Secretary.'

"But alas, among the numerous visions that haunt my crystal I am able to identify members of the class of '23 in only one other occupation. This appears to be a beauty parlor operated by Anna Ware Myers, with Elizabeth Weathers as her assistant. It must be a very profitable industry, for the rooms abound in luxuriant tapestry and furnishings. Now I see a customer entering, and when she passes in going to one of the various torture chambers of this sort of an institution, I recognize her to be Anna Louise Sauer.

"The acclamations of Hanlet Collier prevent me from omitting him from my prophecy. He will have succeeded in verifying the protyletic theory of matter in the near future, and should be given world-wide recognition.

"This I think," continued the clairvoyant, "is all the Seniors of the class of '23. Some will become illustrious and be permanently remembered in the halls of fame, while others will pass meekly into oblivion. Such is the destiny of the human kind."

LESLIE SMITH.







## Class Will

KNOW ALL PEOPLE BY THESE PRESENTS, that we, the Senior Class of '23, of the High School of the City of Paris, State of Kentucky, being of sound mind and body, on this sixth day of June do make and publish this, our last Will and Testament.

To the Senior Class of '24, we leave our Class Room which is filled with many fond and precious memories. We hope you will take good care of it and will get as much enjoyment and pleasure, as well as knowledge, out of it as we did. We also leave you every inch of our "pep" feeling sure you will accept it with open hands.

Harmon, as President of the Class, leaves his chair to Helen Connell as she has a business-like way about her and will be able to get the class to co-operate with her in any thing she undertakes.

"Fisheye" Turner leaves his "Trig" knowledge to Billy Kenney in hopes that some day, some how, Billy will be able to figure out in "Trig" which class in High School has the most "school spirit."

To Ruth Woodward, Ruby Hall leaves her dignified ways. She feels that Ruth will be happy to receive the same.

To the Lovell twins, "Tar" Wilmoth leaves her chewing gum; she is sure there will be enough for both.

Tom Spicer, as Editor-in-Chief of the *PARISIAN ORACLE*, leaves his position to Margaret Santen. He does this so that Margaret will have some way to spend her time as Tom will not be up here next year.

Elmer Burnett, better known as "Rip," leaves his drawing ability to be equally divided between J. T. Knox and George Adams, feeling sure they will be proud to accept such a rare gift.

To Ray Cahal, James Gorey leaves his "Smiles" in hopes that Ray will make good use of them.

To Opal Mallory, Frances Brown leaves her wavy hair, she does this so that Opal can save herself the time and trouble of curling it every day.

Nan Deaver leaves her powder and paint to Pansy Burns so that she may better resemble her name—Pansy.

Ruby Taylor and Addie Fightmaster leave their quiet dispositions to Vivian Wallingford in hopes that she will at all times refrain from disturbing the study hall.

Ruth Wheeler as "Wit" of the class leaves all her jokes to Dot Trisler in hopes that she will never "repeat" them.

Bob McCarty says he hates to see those poor people work so hard on typewriting so he leaves his exercises (which may be found in the Commercial Room) to Frank Bishop and Carlisle Swinford.

Martha Collier leaves her excessive height and office as cheer leader to Margaret Cleveland. She says that if Margaret were a little taller she could be heard all over the auditorium when giving yells.

Edgar Hill, Leslie Smith and Anita Overby leave their "superior brains" (if you can find them) to be divided between Carley Scott, Hallan Goldstein and James Quinn.

Mary Petree as "Vamp" of the class leaves her vamping ways to Elizabeth Gaitskill, Frances Thompson and Ona Lee Stone feeling sure they will make good use of them.

Francis Rourke, Gayle Brown and Bob Frank leave their ability to "create a disturbance in Miss Lockhart's classes" to Dick Tucker and Everett Gallaway.

Amanda Clay Collins and Mary G. Williams leave their loud boisterous ways to Kitty Young. They think she might liven up a little and not be the droll quiet person she is.

Sallie Payne leaves "Hamlet" (the classic) to Ruth Tabor. She knows Ruth will take good care of same.

Kathryn Taylor leaves her sweet, good-natured disposition to be divided between Eleanor Swango and Martha Connell, although she does not think either of them can use it.

Berneice Calvert wills her "giggles" to Emily Fithian. She thinks "Em" a wee bit too quiet.

Hamlet Collier leaves his knowledge of the ladies to Ferdinand Nagle. He thinks Ferdinand should have some of this knowledge.

Utaka and Blanton leave their love-making to Reuben Arnsperger, feeling sure he can use all that is given him.

Ellen Scott wills her remedies for aches and pains to delicate Loraine O'Neal.

To Trella Collins, Anna Howe Donnell leaves her habit of being on time every morning.

Mary Frances Kiser leaves her golden tresses to Elizabeth Mason. She has an idea that Elizabeth likes golden hair.

George Dundon and Leonard McCann leave their inordinate love for dancing for any Juniors who wish to apply for same.

To the faculty, one and all, who have assisted us day after day in winning our goal, we leave our undying love and gratitude.

Signed and sealed in the presence of all members of the Staff, on this sixth day of June, nineteen hundred and twenty three.

JOSEPHINE ADAMS, '23

*One Hundred Three*





## Jokes

"Oh, Mary," said Nan,  
With wild-eyed awe;  
"Did you hear Miss Lockhart say,  
Sir Gala-had saw?"

*Mr. Kirkpatrick*—"What is the knocking at the end of the 'Murder scene' in Macbeth?"

*Martha Collier*—"That was Duncan kicking the bucket."

*Miss Evans*—"I do wish the Lord had made me a man."

*Miss Lillard*—"Maybe he did; don't feel discouraged—maybe you just haven't found him."

*Edna Earle*—"Now, remember, I don't want a large picture."

*Mr. Bradley*—"All right, then, close your mouth, please."

*Miss Lockhart*—"What was the condition of the United States when war began?"

*Ona Lee Stone (who went to a dance the night before)*—"Unprepared, Miss Lockhart."

*Miss Lockhart*—"Quite correct."

*Mr. Trisler*—"Dot, has that boy gone yet?"

*Dot*—"No, but I've got him going."

"I am worried about my complexion, Doctor, look at my face."

"My dear young lady, you'll have to diet."

"Oh, I never thought of that, what color do you think would suit me best?"

*Elmeta*—"Ethel Mae, you have that Algebra on your brain."

*Ethel Mae*—"It's better to have it on my brain now than to have it on my hands next year."

*Virginia*—"Why did you speak to that boy? You don't know him."

*Kitty*—"No, but Vivian does and this is her hat."

*James Deakins*—"I have a perfect brain."

*Albert Hance*—"Yep, not a wrinkle in it."

"Someone suggests that the height of impossibility is an elephant hanging over a cliff with its tail tied to a daisy."

"I had eight dates last week!"  
"Masculine or Dromedary?"

"Hello. I want to order a box for tomorrow."

"What size?"

"There will be six of us in the party."

"But they can only come in single sizes—will have to have it made special."

"Is this the Lyceum?"

"No, this is the undertaker."

*Bob*—"I say, that's my overcoat."

*Hank*—"I don't doubt it, I bought it at a pawn shop."

*Leslie*—"It's the pleasure of the next dance to be mine?"

*Carolyn*—"Yes, all of it."





Giddings Hall

**IF**

you want the best of college educations—one that will fit you for a paying vocation and from which you will reap life-long personal satisfaction, investigate

## Georgetown College

GEORGETOWN, KY.

The school of Personal Attention, Home Atmosphere, High Class Academic Training, and Clean Social Contact.

*Give Us a Chance to Give You Satisfaction*

*Give us a chance to give you satisfaction*



On Hinton Field



---

# REDPATH

---

Founders of the Modern American Lyceum

Originators of the Circuit Chautauqua

Synonymous with Quality and Fair Dealing Always

## Redpath Bureau *Lyceum and Chautauqua*

---

### Life Insurance for Young Men

"The importance of encouraging young men to make at least a start in life insurance is not fully appreciated. Many too hastily assume that it will be time enough to act when they shall have been producers and when there shall be someone depending upon them. The young man should begin early, for, while life looks bright to young men, the mortality tables tell us that at age twenty or thereabouts, in ten years eight out of one hundred will pass away."

**R. F. CLENDENIN, Associate General Agent**

**Northwestern Mutual Life Insurance Company**

**H. W. MANN, Cashier**

**Suite 201-2 First National Bank Building**

**PARIS, KENTUCKY**

---



---

*Department  
Store*

*"The Pride of Paris"*

*THE LEADER*  
INCORPORATED

*Paris,  
Kentucky*

*To The Graduates*

CONGRATULATIONS

FROM

"THE PRIDE OF PARIS"

TO

THE PRIDES OF PARIS

---

Kentucky Wesleyan  
College

Winchester, Kentucky

An A-grade institution; a member of the Kentucky Association of Colleges and Universities; four full years of college work. We do not maintain a Preparatory Department; fifteen High School units are required for entrance. Our dormitories are up-to-date, with every modern equipment.

Write us for catalogue and book of views.

WILL B. CAMPBELL, A.B., D.D., President

---



---

# *This Bank*

believes in this community; in its growth and prosperity, individually and collectively.

We underwrite its ambitions and its efforts with our unqualified faith.

We pledge our co-operation to its forward-looking enterprises and to its individual citizens.

We expect to grow—and to grow by serving.

When you have a financial problem, let us help you solve it.  
You will find a cordial welcome.

## Bourbon-Agricultural Bank & Trust Company

PARIS

KENTUCKY

*“The Bank of Service”*

Capital, \$200,000.00

Surplus and Undivided Profits, \$180,000.00

SAMUEL CLAY,  
President

BUCKNER WOODFORD,  
Vice Pres. & Cashier

B. J. SANTEN,  
Ass't Cashier



---

# Brent & Company

INCORPORATED

PARIS, KENTUCKY

*Coal, Field Seeds, Wool  
Turkeys*

*Kentucky Blue Grass Seed a Specialty*

Both Phones 14

---

## The A. J. Winters Company

*JEWELERS*

For

*"Gifts that Last"*

In Diamonds, Watches, Jewelry and  
Silverware

Recommends

Gruen, Elgin, Hamilton and Howard  
Watches

Waterman Pens      Eversharp Pencils

Seth Thomas Clocks

Estimates and Samples Furnished for  
School Jewelry

We Pledge Our Support to Paris High School

---



---

*Compliments*

*of*

The  
First National  
Bank

Paris, Kentucky



---

# Peoples Deposit Bank and Trust Company

Capital Stock	-	-	-	-	-	-	-	-	-	\$150,000.00
Surplus	-	-	-	-	-	-	-	-	-	100,000.00
Stockholders' Liability	-	-	-	-	-	-	-	-	-	150,000.00
										<hr/>
Protection to Depositors	-	-	-	-	-	-	-	-	-	\$400,000.00

*Safe and Strong*

We Want Your Business and are Prepared to Handle It

Three Per Cent Interest on Time Deposits

Cumberland Phone, 25

S. E. BEDFORD, President

G. W. WILDER, Vice President

C. K. THOMAS, Cashier

ROBT. METEER, Vice President

GEO. L. DOYLE, Assistant Cashier

---

Place Your Order With

**Mrs. J. F. Trisler**

for

**First Class Grade of Domestic Lump  
and**

*Pocahontas Coal*

---

**S. W. Shiveley & Son**

Fresh and Cured Meats

Poultry and Oysters in Season

Both Phones 87

Main Street, near Seventh

PARIS

KENTUCKY

---

**Geo. R. Davis**

*Undertaker*

**AMBULANCE SERVICE**

**Paris, Kentucky**

---

**Paris Home Telephone and  
Telegraph Company**

INCORPORATED

Paris, Kentucky, is a part of the  
Central Home Telephone and Tele-  
graph Company's system of Louisville,  
serving over 100,000 subscribers in  
Kentucky and Indiana.

**Use Home Long Distance**



---

# Bourbon Lumber Co.

INCORPORATED

PARIS, KENTUCKY

## *Complete Stock and Building Material Planing Mill*

---

We are proud of our record in business, and we believe we are justified in feeling that we mean a good deal to our community, but we are most proud of our schools, because they mean a great deal more to Paris and Bourbon County.

Every citizen should feel it his or her duty to lend their support to this work. Already our reputation for educational facilities has gone abroad throughout the boundaries of our own State, and we need only to continue the good work until Paris, Ky., will be nationally known as having one of the very best public school systems in the United States.

If you want to live in a city that offers you the best public school education for your children, move to Paris, Kentucky.

If you want to own a home or do any kind of building, see the Bourbon Lumber Co.

A. B. HANCOCK  
President

MARY K. TARR  
Vice President

M. PEALE COLLIER  
Secretary-Treasurer



---

# Farmers and Traders Bank

PARIS, KENTUCKY

---

Began Business January 3, 1916

---

Capital	-	-	-	-	-	-	-	-	-	\$60,000.00
Surplus	-	-	-	-	-	-	-	-	-	26,000.00

---

## OFFICERS

FRANK P. KISER, President  
S. L. WEATHERS, Vice President  
W. W. MITCHELL, Cashier  
JNO. W. YERKES, Assistant Cashier  
DAN PEED, JR., Bookkeeper

---

## DIRECTORS

FRANK P. KISER	S. L. WEATHERS
GEO. W. WYATT	M. HUME PAYNE
SAM HOUSTON	GEO. K. JONES
J. D. McCLINTOCK	E. B. JANUARY
THOS. MITCHELL	

---



---

# P. H. S.

Stands for Paris High School

AND

## P. H. S.

Also stands for "Pleasing Home Surroundings"  
And that is what we stand for too

"Pleasing Home Surroundings"—Everything in **home furnishings** at the right price and of the right quality. Pleasing to look upon. Pleasing to own.

This firm has satisfactorily served the good people of Bourbon for the last sixty-two years.

May we have the pleasure of passing the advantage of our experience on to **you?** We assure you we will do our best to make the pleasure mutual.

Columbia Grafanolas and Records  
Wall Paper

## THE J. T. HINTON COMPANY

Sixth and Main, PARIS, KENTUCKY

ESTABLISHED 1860

Undertaking

Ambulance

PHONES 36

---

### *Have You Visited the Sweet Shop?*

Catering to Satisfaction in

## High Class Confections

That Your Friends and Yourself Will Enjoy

## WORICK BROS., Props.

---

# Try LOWRY & MAY

For

EVERYTHING IN FIRST CLASS

## *HARDWARE*

Quality Right

Price Right

---

*One Hundred Fourteen*



---

*Spring Time is  
House Cleaning Time*

Let us do that Wiring Job for you now  
and fix up all your lights.

We have also opened our Electric Shop  
and have all kinds of Fixtures,  
Vacuum Cleaners, etc.

Let us explain our payment plan on the  
larger appliances and wiring jobs.

Paris Gas &  
Electric Company

Eugene A. Bradley

Katherine S. Bradley

Pictures in this Annual made by

**Bradley  
Studio**

*“Portraiture by  
Photography”*

Georgetown, Ky.

Paris, Ky.

---

Serv - Us  
Brand

Pure Food Products

A Complete Line of Finest Quality

Distributed by

The Power Grocery  
Company

Wholesale Grocers

PARIS, KENTUCKY

---

*The Best Drug Service  
in Town*

Arderly Drug  
Company

Both Phones 50

410 Main St.



---

*School  
Supplies*

*of*

*All Kinds*

Paris Book Store

T. W. Spicer

*Plumbing*

*Heating*

Stoves and Ranges

Edin Washers

Automatic Water Heaters

Main Street

Opposite Court House

PARIS, KENTUCKY

---

Varden & Son

*“The Rexall  
Druggists”*

We carry everything found in a  
First Class Drug Store

Will Redmond

R. F. Collier

FOR COAL, SALT, GRAIN AND  
FEEDS OF ALL KINDS

Try

R. F.  
Collier & Co.

Pleasant St., between Second & Third

The Hutchcraft Elevator

Both Phones



---

## John Merringer

### *Plumbing and Heating*

Caloric Pipeless Furnaces

Delco Light Plants

Cumberland Phone 251

Home Phone 229

PARIS, KENTUCKY

## *Graduation Gifts*

New, Novel and Distinctive

The "House of Quality"

for

Jewelry

## Shire & Fithian

PARIS, KENTUCKY

Prices the Lowest Quality the Best

---

## *Be Loyal*

Our City School nourishes and builds up the mental and moral fibre of our young ones.

Our Purity Flour nourishes and builds up the little bodies.

Both Phones No. 16

## Paris Milling Co.

PARIS

KENTUCKY

---

## Kentucky College for Women

In the Heart of the "Blue Grass"

Standard four-year college course, leading to A. B. degree. Special advantages in Music, Art, and Domestic Science. Faculty carefully selected, and thoroughly efficient. Large campus. New modern dormitories. Gymnasium with swimming pool, bowling alleys, etc. Outdoor life and sports encouraged. For catalog, address:

JOHN C. ACHESON, M. A., LL.D.,  
President

DANVILLE

KENTUCKY



The Management of the

## Paris Grand and Alamo Theatres

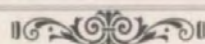
Extend their heartiest wishes to the  
1922-1923  
Graduates of the Paris High School

"Success is yours—go and get it"  
We congratulate you!

## Paris Grand and Alamo Theatres

## Benedetti & Co.

### *Confectionery*



Pure, Wholesome and Delicious  
Ices and Drinks  
Candies, Cigars and Cigarettes

## PRICE & CO.

*Clothiers*  
and  
*Furnishers*

The Latest for  
Boys and Young Men

Always Your Money's Worth

Entire Satisfaction Guaranteed

## Bourbon Laundry

M. H. H. DAVIS, Proprietor

Telephone Number 4

Office No. 14 W. 5th Street



Headquarters in Paris for  
FASHION PARK AND  
ADLER-ROCHESTER CLOTHES

Manhattan Shirts  
Stetson Hats

Bradley Sweaters  
Phoenix Hosiery

*J.W. Davis & Co.*  
If it comes  
from Davis  
it is right

Chas. P. Cook  
and Company

*Agents for*  
*Ferndell Goods*

Phones: E. Tenn. 932-207; Home 207

PARIS, KENTUCKY

G. M. Mansfield    G. S. Jefferson

Mansfield & Jefferson  
Lumber Company

Dealers in

Lumber, Coal, Sand, Cement, Laths,  
Plastering and Builders' Hardware

We appreciate your patronage

Home Phone 510

Cumberland Phone 711

PARIS

KENTUCKY

KODAKS

Daugherty  
Bros.

FIFTH AND MAIN

*Spalding's*  
*Athletic Goods*



---

# C. S. Ball

## *Garage*

Distributors for

BUICK AUTOMOBILES

B. F. GOODRICH (SILVERTOWN)  
CORD AND FABRIC TIRES

I. H. C. FARMING IMPLEMENTS

Auto Painting, Trimming, and all kinds  
of repair work

## *The Happy Home Makers*

### A. F. Wheeler & Company

Opposite Court House

CHAS. GREEN, Manager

---

## John Christman Company

### *Florists*

Cut Flowers for all Occasions

Both Phones

Member Florists' Telegraph Delivery

You are invited to visit—

## KRESS'

5c, 10c, 25c

### Store

Right in the Heart of Paris

Always Something New and Practical  
in the Merchandise Line



---

## *The Golden Rule Store*

Ladies' and Gents' Furnishing Goods and  
all kinds of Household Goods and Floor  
Coverings at the very lowest of prices.  
Prompt service and polite attention. Your  
business solicited.

**J. M. Elvove**

717 Main Street

PARIS, KENTUCKY

---

**A. B. Lovell**

STAPLE AND FANCY  
GROCERIES

Nearest Place for School Supplies

Eighth and Henderson Streets

Both Phones 269

PARIS, KENTUCKY

---

**Frank & Co.**

*Ladies'  
Outfitters*

PARIS, KY.

---

The Best of Shoes

**Feld's  
Shoe Store**

Leaders in Style and Quality

---

**Tilford Burnett**

*Staple and Fancy  
Groceries*

Winchester St.

Both Phones 495

---

**Grinnell's Dry Cleaning**

H. L. and J. R. GRINNELL, JR., Props.

Home Phone 278

Cumb. Phone 793

622 Main Street

---

**C. B. Mitchell**

Home Made Candies, Fancy Ices,  
Sodas and Sundaes

---



# Miss Holladay's

FAMOUS HOME-MADE CANDIES

Made  
PARIS, KENTUCKY

## Endowment Insurance at Life Rates

We have an Insurance Policy especially suited to Teachers and Professional people. Many teachers in Bourbon and surrounding counties have found it an ideal form of saving. Let us show you.

JAMES H. SHEA & CO., Special Agents  
301 First National Bank Paris, Ky.  
Mutual Benefit Life Insurance Co., Newark, N.J.

## Friedman's *Shoe Store*

Shoes of Quality at Lowest Prices  
Corner Sixth and Main Streets  
PARIS, KENTUCKY

## John B. Rogers Producing Co.

Fostoria, Ohio

Established 1903

World's largest producers of Amateur  
Theatricals

2,000 performances last year

### *Summer School*

Stage Arts, Pageant Play Directing  
Competent students placed

Opens June 25th

Write Department M for particulars

## Linville

When you think of Linville,  
think of shoes

When you think of shoes,  
think of Linville

The Bowling Green Business University is an outstanding institution. Seventy-five per cent of its students are high school graduates. It offers courses short and long, prepares bookkeepers, stenographers, salesmen, accountants and commercial teachers. On accredited list of University of Kentucky. Address:

Bowling Green Business University  
BOWLING GREEN, KENTUCKY  
Near Mammoth Cave

## "Try the *Drug Store First*"

We have a well-equipped drug store, and cater to those who want the best at reasonable prices. Think of us when you need anything in the drug line.

Brooks and Snapp Drug Co.  
Both Phones 46 415 Main Street



---

*Better Homes Mean Better Citizens  
and a Better Community!!*

**THAT'S OUR OBJECTIVE**

When you join us, you help some other worthy person as well as yourself.

**Peoples Building and Loan Association**

INCORPORATED

---

*Everything for the School*

Class Rings  
Globes  
Desks  
Crayons  
Art Goods



Invitations  
Charts  
Maps  
Erasers  
Blackboards

**Central School Supply Company**

311-13 W. Main St., Louisville, Ky.

---

**KANE BROS.**

Paints, Oils and Wall Paper; Varnishes, Lead, Turpentine, Shellacs,  
Brushes of all Kinds, Window Glass and Wind Shields.

Agents for the Foy Paints

We are also contracting painters and paper hangers.  
Give us a call. Store opposite Bourbon Lumber Co.

Cumberland 1087

South Main Street

Home 339

---

**THE PHOENIX HOTEL**

Lexington, Kentucky

Respectfully solicits the patronage  
of the people of Paris and Bourbon County  
when in Lexington

CHARLES H. BERRYMAN, President

JOHN G. CRAMER, Manager



---

# *Sporting Goods*

We sell the Paris City Schools athletic goods. They are careful buyers, and it takes good quality and the right prices to sell them.

Write for Catalog

## **The Sutcliffe Co.**

INCORPORATED

LOUISVILLE

KENTUCKY

---

Engraved Cards

Engraved Invitations

Embossed Stationery

Society Stationery

Write for Sa.

## **Courier-Journal Job Printing Company**

P. O. Box 617      LOUISVILLE, KY.

---

# **Harcourt & Co.**

INCORPORATED

Louisville, Kentucky

Designers and makers of

Commercial and Social Engraved  
Stationery

Commencement Invitations

Christmas Greeting Cards

Fraternity Stationery

Calling Cards

Favors

Request by mail will bring a salesman

---

## *High Grade Footwear*

For Ladies, Men and Children

At Lowest Prices

### **POSNER BROS.**

at Dan Cohen's  
Old Stand

---

## *The Parisian*

Takes Great Pleasure in Presenting to the voters of this Community the Announcement of

## **Judge Jos. H. Polsgrove**

for Nomination for Circuit Judge in the 14th  
Judicial District

Judge Polsgrove has a host of friends in Bourbon County who are very much interested in seeing him nominated at the Primary August 4th.

---



---

## *Books with a record*

EASY ROAD TO READING Primer, First, Second, Third, Fourth, Fifth, Sixth Grade, Seventh Grade and Eighth Grade Readers, Manual, Chart in three colors, Perception Cards, Rhyme Cards, Phrase Cards, Phonic Cards, etc.

PRACTICAL ENGLISH, Books One, Two and Three, and Manual. These books are the direct outgrowth of the Better Speech Movement. Speech habituation is the big idea. They are unusually attractive. They conform to the requirements of modern courses of study. Provisions are made for the co-operation of parents and teachers in the Better Speech Movement.

For further information regarding the above, address the publishers

## Lyons & Carnahan

221 E. Twentieth Street, Chicago

131 E. 23rd St., New Yo

---

## Farmers Supply Co.

The place to save money on Groceries, Hardware, Stoves and Ranges, Harness, Buggies, Wagons, all kinds of Oil, and most anything a farmer needs.

PARIS

KENTUCKY



We Specialize in

Day Cleaning  
Pressing  
and  
Carpet Cleaning  
**LEVY'S**

*The Home of  
Good Things to Eat*

**Logan Howard**

Phone 179

*For the Best  
in Drugs*

Go to

**Oberdorfer's  
Drug Store**

**R. P. WALSH'S**

*Correct Clothes  
for Young Men and Boys*

You want to look your best at the close  
of school—and you will look good if you are  
dressed in one of our suits.  
Everything in furnishings.

**R. P. WALSH**

One Price Store

Main Street

PARIS, KY.

*One Hundred Twenty-six*

Eat

**Dixie**  
PASTEURIZED

*Ice  
Cream*

Pure

Sure

A Delicious and Well-Balanced Food

"Quality Built Its Demand"

**Dixie Ice Cream Co. Incorporated**  
LEXINGTON KENTUCKY

*The Parisian*

Takes Great Pleasure in Presenting to the  
Voters of this Community the Announce-  
ment of

**Judge Ben C. Williams**  
of Frankfort, Ky.

For Nomination for Circuit Judge in the 14th  
Judicial District

Judge Williams is one of Kentucky's ablest  
lawyers, and if elected to this responsible  
position, will fill it with credit to himself  
and honor to his friends, of whom he has  
many in Bourbon County.

Primary August 4th

*The Parisian*

Takes Great Pleasure in Presenting to Paris  
and Bourbon County People the Announce-  
ment of

**J. Campbell Cantrill**

Candidate Democratic Nomination for  
Governor

Primary Election, August 4th

Mr. Cantrill is easily one of America's ablest  
representatives

*Printing Has Always  
Stood for Progress*

*Better Printing Stands  
for Greater Progress*

**The Franklin Printing Company**  
INCORPORATED

Wade Sheltman  
President

416 W. Main Street  
Louisville, Ky.







