





THE
P
A
R
I
S
I
A
N

1936

THE PARISIAN
1936



*PUBLISHED BY THE
SENIOR CLASS OF PARIS HIGH SCHOOL*



TO
THEM
WHO THROUGH
THE YEARS HAVE
BEEN THE IDEAL OF
OUR LIVES, WHO HAVE
GUIDED AND DIRECTED US
IN THE COURSE OF OUR SCHOOL
YEARS, WHO HAVE LABORED IN SIN-
CERITY AND LOVE FOR THE ADVANCE-
MENT OF THE PARIS HIGH SCHOOL AND FOR
OUR BROAD DEVELOPMENT IN THE TRUE
SPIRIT OF LEARNING AND LIVING
WE, THE SENIOR CLASS OF 1936,
IN RESPECT AND APPRECIA-
TION DEDICATE THIS VOL-
UME TO THE
FACULTY
OF THE
PARIS HIGH SCHOOL



LEE KIRKPATRICK

Superintendent

A. B., Georgetown College; A. M., Columbia University;
Graduate Student Harvard University



GILBERT LAVIN
A. B., University of Kentucky
M. A., Ann Arbor University
Latin



ZERELDA NOLAND
A. B., University of Kentucky
M. A., Columbia University
English



ELLEN BLANDING
University of New York
Music



EDITH L. MONSON
A. B., Georgetown College
M. A., University of Michigan
French and Spanish



MRS. W. E. COLLIER
A. B., University of Kentucky
M. A., University of Kentucky
Science



HELEN LOUISE SMITH
B. S., George Peabody College
Physical Education



LULU BATCHELDOR
A. B., Transylvania College
M. A., Columbia University
Graduate Student Cambridge University
Political Science



F. A. SCOTT
A. B., Southwestern University
M. A., Columbia University
Principal—Mathematics



MRS. NAN K. BEARD
A. C. A., Bowling Green
Commerce



MRS. DAN PEED
University of Kentucky
Home Economics

THE PARISIAN

CLASS HISTORY

CHAPTER I.

1. And in the beginning (1) all things were dark because there was none who did understand the writing on the wall (2).

2. And the confidence and faith of the disciples (3) waxed sore under the strain.

3. But it so came to pass that one and eight years later that there was given unto each of them a parchment (4)

And the parchment bore testament of much merit for it gave unto them the right to enter into the new temple (5) which was built in the twenty-eighth year of the old temple.

5. And so the disciples did vacate for four-score and ten days (6).

6. And all this took place in the fifth year of the new temple.

Notes—(1) Of the first grade; (2) reading charts on the walls; (3) pupils. (4) Junior Hi diploma; (5) new building; (6) summer vacation.

CHAPTER II.

1. Many were the disciples that came unto the new building, and it so happened that they were not received with great rejoicing by the older disciples.

2. And there was much shaking of heads, and giving of doubtful looks, for the new disciples were a fuzzy lot.

3. But thirteen score and ten days passed and the fuzz had been removed;

4. For the new disciples had taken unto themselves much work and they had had soldiers upon the field of battle both in football and in basketball, and there WERE others who had gone out and had studied.

5. And so it came to pass that in the sixth year of the new temple the new disciples were allowed to take unto themselves the name of "Junkers" (8).

And again they did vacate all their land for fourscore and ten days.

7. And all this took place in the year of

the old temples' grace, one score and twelve.

(7) School term; (8) Juniors.

CHAPTER III.

And the Autumn came and the disciples came, and the new disciples, and the teachers, and the over-lords, and the high priests of all the great multitude came and they did get themselves to work.

2. And the "Junkers" were allowed to make choice of certain subjects of great knowledge and they did and some took Frog and some the study of Spic (10), and others the study of insects and still others that of the ancients (11).

3. And so it came to pass that the "Junkers" became known for their great pains and many there were who thought overmuch of them.

4. But the mid-term trials (12) were passed over with ease and they enjoyed themselves that they had no more

5. For there were those who did not pass with ease and they were stuck.

6. And after a while, a play was caused to be given and it was proclaimed over the country nearby and the birds did sing and the trees did bloom for the play's name was "Blossom Time."

7. So it was that in this way the year was played out and the disciples were glad for they wished to scam with all haste for the country round about

8. And all this took place in the seventh year of the new temple, and of the old, the thirty-third; and of the city, the hundred and sixty-sixth; and of the state, the hundredth and forty-second; and of the nation, the hundredth and forty-seventh; and of the world, the cleventh millionths.

9. And the Pharisees there were those who thought the Junkers were over old.

(9) French; (10) Spanish; (11) History; (12) Mid-term finals.

(CONTINUED ON PAGE 45)



CLASSES



Amelia Allison

Sunny; ever-smiling; steadfast.

Home Ec. Club 1, 4; Latin Club 1, 2; Garden Club 2; Commercial Club 4; Glee Club 2, 3, 4; Annual Staff 4.

Willie Tapp Beaz

"The rule of my life is to make business a pleasure and pleasure my business."

Basketball 1, 4; Glee Club 2, 3; Science Club 2; El Circulo Espanol 3, 4.

Robert Nickerson

"Ah, but a man's reach should exceed his grasp,
Or what's a heaven for?"

Orange and Black Book 1; Class Play 1, 2, 3, 4; Honor Roll 1, 2, 3, 4; Le Cercle Francais 2; Latin Club 1, 2 (Pres.); Debating 3, 4; Annual Staff 4; Class Officer 1, 2, 3, 4; Science Club 3, 4; Commercial Club 3.

Gertrude Ellis

"Lofty aspirations; blue infinity."

Le Cercle Francais 3, 4; Latin Club 1, 2; Glee Club 2; Class Play 1, 2, 3; Theme Award 1; Home Ec. Club 1; Garden Club 2; Debating 3, 4; Honor Roll 1, 2, 3, 4; Annual Staff 4.

Gertrude Fryman

Gentle of spirit; beneficent of mind.

Home Ec. Club 1; Latin Club 1, 2; Glee Club 2, 3; Garden Club 2; El Circulo Espanol 4; Commercial Club 4.

Grover Baldwin

"A mind to conceive; a heart to resolve; a hand to execute."

Class Pres. 2, 3, 4; Vice-Pres. 1; Le Cercle Francais 3, 4 (Vice-Pres.); Latin Club 1, 2 (Vice-Pres.); Annual Staff 4; Honor Roll 1, 2, 3, 4; Class Play 1, 2, 3; Science Club 2, 3, 4; Orange and Black Book 1; Glee Club 2, 3; Basketball 1, 3, 4 (Captain 4th year); Football 2, 3, Asst. Mgr. 4; Track 3; Commercial Club 3; Parisian Circle 2, 3, 4.

Charme Ewalt

Efficient; thoughtful, earnest; kind.

Ruddles Mills 3; Glee Club 2, 4; Commercial Club (Pres.) 4; Le Cercle Francais 2, 4; Garden Club 2; Home Ec. Club 1, 4; Honor Roll 1, 2, 4; Annual Staff 4.

Pershing Clough

"Self-respect, the cornerstone of all virtues."

Lat'n Club 1; Glee Club 2, 3, 4; Choir 4; Commercial Club 4; Science Club 2, 3; Class Play 3.

William Cooper

"Eat, drink and be merry
For tomorrow we die."—Or
go to work.

Commercial Club 2, 3; Latin Club 1; Football 2, 3; El Circulo Espanol 4.



Carl Delaney

Happy-go-lucky; self-satisfied!

Glee Club 2, 3; Science Club 2; El Circulo Espanol 2, 3; Commercial Club 3, 4; Latin Club 1;

Ann King Glass

Summer camps; tennis racquets; splash!

Orange and Black Book 1; History Award 1; Le Cercle Francais 2, 3; Latin Club 1, 2, 3, 4 (Pres.); Glee Club 2, 3; Science Club 4 (Vice-Pres.); Girl Reserves; Home Ec. Club 1; Physical Ed. 3; Class Play 2, 3; Honor Roll 1, 2, 3, 4; Class Vice-Pres. 2; Annual Staff 4.

Jean Hadden

A little white house with a primrose path.

Home Ec. Club 1, 4; Science Club 4; Latin Club 1, 2, 3, 4; Le Cercle Francais 3; Glee Club 2, 3, 4; Physical Ed. 2; Class Play 1, 3; Rep. in Public Speaking 3.

Helen Taylor Hazelrigg

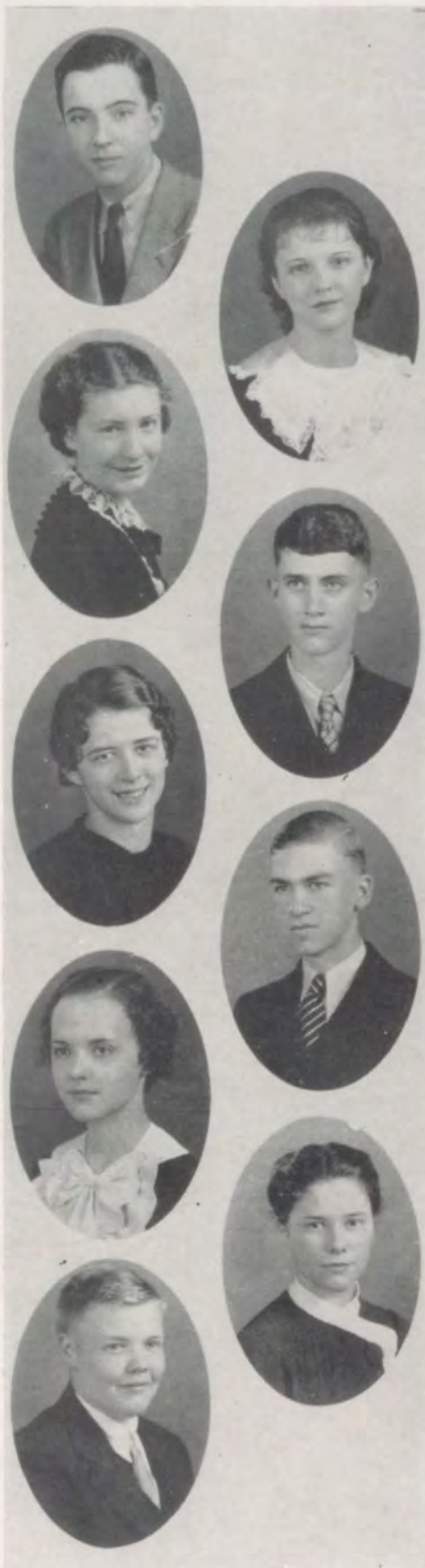
Melodrama; accents that command.

Orange and Black Book 1; Latin Club 1, 2, 3, 4; Le Cercle Francais 2, 3, 4; History Award 1; Pep Club 4; Class Play 1, 2, 3; Vested Choir 4; Honor Roll 1, 2, 3, 4; Pres. of Central Ky. Girl Reserves; Annual Staff 4; Home Ec. Club 1; Glee Club 2, 3; Physical Ed. Club 2; Debating 3, 4; Band Sponsor 4; Music Rep. 1, 3, 4; Oral Interpretation Rep. 3; Science Club 4.

James Ewalt

Good nature is the sign of a large and generous soul.

Glee Club 2, 3, 4; El Circulo Espanol 3, 4; Annual Staff 4; Football 4; Band 1, 2; Science Club 2, 3; Dist. Rep. in Music 3; Commercial Club 4; Latin Club 1; Hon. Mention on all C. K. C.



Helen Graves

"Friendly eyes which reflect life's serious moments."

Home Ec. Club 1; Latin Club 1; Garden Club 2; El Circulo Espanol 2, 3; Le Cercle Francais 4; Commercial Club 4; Annual Staff 4; Honor Roll 1, 2, 3, 4.

Archie Dotson

"Man is man, and master of his fate."

Latin Club 1, 2; Science Club 2, 3, 4; Le Cercle Francais 3, 4; Commercial Club 4; Debating 4; Parisian Circle 4; Class Play 3.

Vaughn Drake

Truthful, steadfast, witty and gay,
Vaughn goes on his laughing way.

Latin Club 1, 2; Le Cercle Francais 3; Science Club 2, Treas. 3, 4; Class Play 1, 2.

Mary Archer Hinkle

"What I think true is what I say
And what I think right is what I do."

Glee Club 2, 3, 4; Latin Club 1, 2, 3, 4; Le Cercle Francais 2, 3, 4; Science Club 4; Orange and Black Book 1; Home Ec. Club 1; Vested Choir 4.

Margaret Hinton

Straw hats; dusty roads; good fellowship.

Latin Club 1; El Circulo Espanol 2; Garden Club 2; Home Ec. Club 1, 3, 4; Commercial Club 3, 4; Annual Staff Artist 4.

Elizabeth Kenney

Unruffled waters; deep sincerity.

Home Ec. Club 1, 4; El Circulo Espanol 3, 4; Glee Club 2, 3; Commercial Club 4; Latin Club 1, 2; Physical Ed. Club 2; Annual Staff 4.

Nell Luallen

"O, who will walk a mile with me along life's merry way?"

Orchestra 1; Pep Club 2, 3, 4; Latin Club 1, 2, 3, 4; Le Cercle Francais 2; Commercial Club 4; Parisian Circle 2, 3, 4; Garden Club 4; Physical Ed. Club 1, 2, 3, (Sec.-Treas.) 4 (Vice-Pres.).

John Fudold

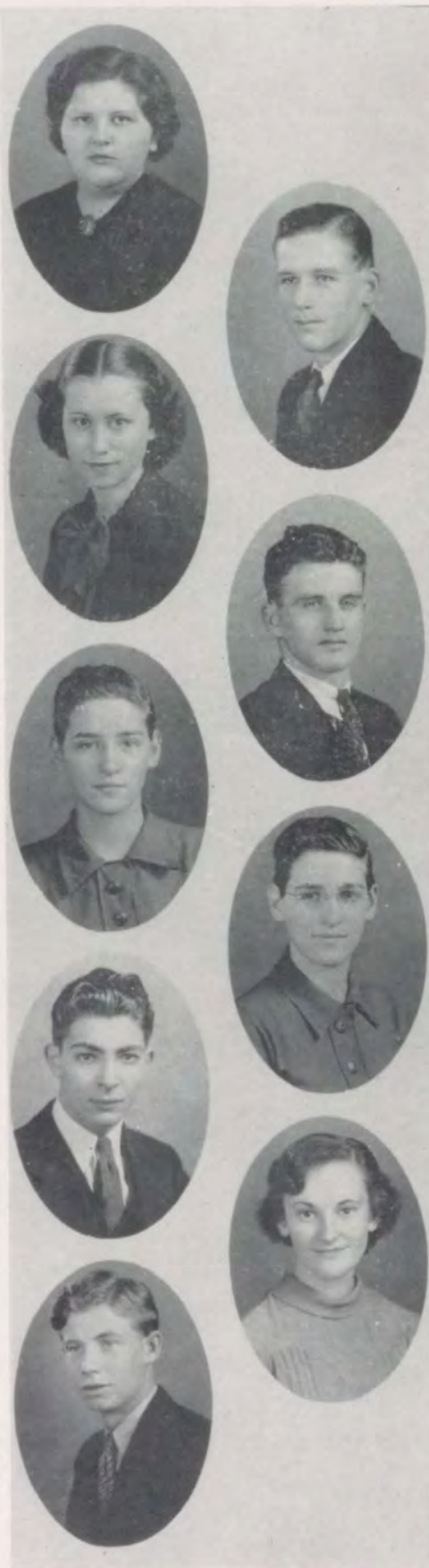
"I hear, yet I say not much, but I think all the same."

Latin Club 1; Glee Club 2, 3; Science Club 2, 3, 4; Football 3, 4; El Circulo Espanol 2, 4; Basketball 4 (Mgr.).

Tony Johnson

Happy-go-lucky; independent.

Glee Club 2, 3; Latin Club 1, 2; Science Club 2; Commercial Club 4; Basketball 1; Football 4.



Russell Faulk

To be; to do—For the fight has just begun.

Glee Club 2, 3; Science Club 2, 4; Le Cercle Francais 4; El Circulo Espanol 3; Commercial Club 3, 4; Latin Club 1.

Ussery Fightmaster

Friendly, prudent, and popular—to beat the band.

Science Club 2, 4; Band 1, 2, 3, 4; El Circulo Espanol 2, 3; Latin Club 1; Commercial Club 3, 4.

Sue Luallen

Pep, spirit of dauntless youth.

Le Cercle Francais 2; Latin Club 1, 2; Science Club 3; Pep Club 2, 3, 4; Class Play 1; Orchestra 1; Physical Ed. Club 2 (Vice-Pres.) 3, 4 (Pres); Annual Staff 4; Commercial Club 4.

Edna Lytie

"The steady glow of true leadership
The constant star of ambition."

Orange and Black Book 1; Girl Reserves (Treas.) 2, 4 (Co-Pres.); Le Cercle Francais 2, 3; Latin Club 1, 2, 3, 4; Glee Club 2, 3, 4; Vested Choir 4; Scholarship Rep. Algebra 1; Class Play 3; Annual Staff 4; Home Ec. Club 1; Music Rep. 3; Physical Ed. 2, 3; Debating 3; Science Club 4; Honor Roll 1, 2, 3, 4; Vice-Pres. Class Junior Year.

Ethel McCuddy

Green fields; happy contentment.

Sulphur High 1; Latin Club 2; Garden Club 2; Home Ec. 3, 4; Commercial Club 4; El Circulo Espanol 4;

Mary Elizabeth Overby

Stately dignity, common sense; poised dependability.

Orange and Black Book 1; Glee Club 2, 3, 4; LeCercle Francais 2, 3, 4 (Pres.); Latin Club 1, 2, 3, 4; Class Play 1, 2, 3, 4; Girl Reserves Co-Pres. Senior Year; Annual Staff 4; Theme Award 1; Class Sec. 4; Physical Ed. Club 2; Rep. in Music 3; Debating 4; Home Ec. Club 1; Delegate to Girl Reserve Conference 3, 4; Honor Roll 1, 2, 3, 4; Vested Choir 4.

Mary Lou Park

Peter Pan Collars; brownies; slipping waters.

Garden Club 4; Latin Club 1, 2, 3, 4; Le Cercle Francais 2, 3, 4; Home Ec. Club 1; Glee Club 2; Physical Ed. Club 2.

Martha Lee Plummer

Modernistic sweeps of color.

Class Officer 1, 2; Garden Club 2 (Vice-Pres.); Science Club 4; Latin Club 1, 2; El Circulo Espanol 2, 3; Le Cercle Francais 4; Glee Club 2, 3, 4; Commercial Club 4; Home Ec. Club 1, 3; Class Play 1; Annual Staff Artist 4; Rep. in Music 2; Vested Choir 4.

Riley Martin

"If music be the food of love,
play on,
Give me excess of it."

Glee Club 2, 3, 4; Spanish Club 2; Commercial Club 3, 4; Science Club 2, 4; Won School Tenor Contest, '36.



James Goodman

On the football field he sets
a wicked pace
But, believe me, he's faster
yet in Cupid's race.

Science Club 2, 4; Class Play 1; Dist. Rep. in Music 3; Class Pres. 1; Commercial Club 4; Football 3, 4—Capt.; Basketball 1, 2, 3—Capt. 4; Glee Club 2, 3, 4; Track 3.

Mary Elizabeth Martin

Tams; lumberjacks; pine cones.

Home Ec. Club 1, 4; El Circulo Espanol 2, 3; Le Cercle Francais 4; Physical Ed. Club 1, 2, 3, 4; Glee Club 2; Science Club 2, 4; Latin Club 1.

Maurice Lykins

Maximum results with minimum efforts.

Football 2, 3, 4; Class Play 1, 2; Latin Club 1, 2; Glee Club 2, 3, 4; Le Cercle Francais 2, 4; Commercial Club 4; Science Club 2, 3, 4; Dist. Rep. in Math. 3; Band 1, 2, 3, 4.

Naydien Rainey

Southern beauty with a soft warm smile.

Fort Thomas 1; Glee Club 2, 3, 4; Le Cercle Francais 3; Latin Club 2; Parisian Circle 4; Home Ec. Club 3, 4; (Sec.); Girl Reserves Sec.; Science Club 4; Garden Club 2; Vested Choir 4; Annual Staff 4.

Everett Mann

"A man of deeds, not words,
we find
Alas not many of this kind."

Latin Club 1, 2; Science
Club 2, 3, 4; Glee Club 2, 3, 4;
Commercial Club 4.

Louise Royse

Laughing eyes; syncopation.

Orange and Black Book 1;
Class Play 1, 2; Orchestra 1;
History Award 1; Latin Club
1, 2, 3, 4; Science Club 3;
Garden Club 2; Pep Club 4;
Glee Club 2, 3, 4; Scholarship
Rep. 1 General Science (2nd
in district) — 2 English Me-
chanics (Upper 10% 0-3) Eng-
lish Mechanics; Honor Roll
1, 2, 3, 4; Home Ec. Club 1;
Physical Ed. Club 2; Vested
Choir 4; Annual Staff 4.

Mary Emily Rice

FRAT pins; thrills; gay
week-ends.

Latin Club 2; Le Cercle
Francais 2; Physical Ed. 2;
Lexington 1; Science Club 4;
Band 2; Glee Club 2, 3, 4;
Home Ec. Club 3; Choir 4.

Robert McCuddy

"Give me wisdom,
The greatest gift of the gods."

Science Club 2, 4; Com-
mercial Club 3; Football 4;
Glee Club 2, 3, 4; Class
Treas. 3.

Pietertje Smits

Genuineness; a happy mood.

Class Vice-Pres. 4; Orange
and Black Book 1; Glee Club
2; Latin Club 1, 2; Home Ec.
Club 1, 3; Physical Club 2;
Parisian Circle 3, 4; Science
Club 2, 4; Honor Roll, 1, 2, 3,
4; Le Cercle Francais 3, 4
(Sec); Annual Staff 4; Schol-
arship Rep. Biology 2.



Nellie Rash

Rare compound of oddity,
frolic and fun.

Latin Club 1, 2, 4; Le Cer-
cle Francais 2, 3, 4; Home Ec.
Club 1; Physical Ed. Club 2,
3; Theme Award 1, 2; Glee
Club 2, 3; Honor Roll 1, 2, 3,
4; Annual Staff 4; Debating
3, 4.

Fred Smith

"To be little is to be loved."

El Circulo Espanol 3, 4;
Glee Club 2; Latin Club 1, 2;
Commercial Club 3.

Elizabeth Santen

A smile for all; a sweetness
that enhances.

Physical Ed. Club 2; Orange
and Black Book 1; Home Ec.
Club 1; Class Play 1, 2, 3;
Latin Club 2, 3, 4; Choir 4;
Le Cercle Francais 2, 3, 4;
Honor Roll 1, 2, 3, 4; Annual
Staff 4.

Frances Scott

"What visions charm us; what
pleasures greet:"

Home Ec. Club 1, 2, 3;
Commercial Club 2, 3, 4; El
Circulo Espanol 4; Science
Club 4; Latin Club 1, 2; Phy-
sical Ed. 2, 3.

L. B. Swinford

None but himself can be his parallel.

Glee Club 2; Science Club 3, 4; Football 1, 2, 3, 4 (Asst. Mgr.); Basketball 3, 4 (Mgr.); Track 3.

Dan Sullivan

"A little nonsense now and then

Is relished by the wisest men."

Glee Club 2; Science Club 2, 3; Latin Club 1, 2; Class Play 2; Commercial Club 4; Class Officer 3.

Burton Violet

"Here, too, dwells truth, an abundance of sunshine and cheer."

Glee Club 2, 3; El Circulo Espanol 2; Treas. 3; Science Club 2, 4; Commercial Club 4.

Helen Gudgell

Giggles; always cheerful.

Latin Club 1, 2; Le Cercle Francais 2, 3; Science Club 2; Glee Club 2, 3, 4; Physical Ed. Club 2, 3, 4; Home Ec. Club 1; Commercial Club 4.

Betty Wilson

Friendly; loyal, true.

Glee Club 2, 3, 4; El Circulo Espanol 4; Home Ec. Club 1; Latin Club 1, 2, 3, 4; Physical Ed. Club 2; Vested Choir 4; Commercial Club 4.



Edith Speakes

Mirthful eyes; friendliness.

Glee Club 2, 3, 4; Garden Club 2; Home Ec. Club 1, 4; El Circulo Espanol 2.

Louesa Watson

Reserved, quiet, inscrutable.

Home Ec. Club 1, 3, 4; El Circulo Espanol 2, 4; Glee Club 2, 3, 4; Garden Club 2; Latin Club 1; Commercial Club 4.

Jack Wilson

"Sincerity is the way to heaven—

To think is the way of man."

Glee Club 2, 3, 4; Vested Choir 4; Science Club 2, 3, 4; Science Club 2, 3, 4; Latin Club 1, 2; Commercial Club 4.

J. J. Parrent

He speaks, behaves and acts just as he pleases.

Glee Club 1, 2, 3, 4; Science Club 2; El Circulo Espanol 3, 4 (Treas.); Commercial Club 2, 4; Latin Club 1; Vested Choir 4; Basketball 1, 4 (Asst. Mgr.); Football 4 (Asst. Mgr.); Dist. Rep. in Music 1, 2, 3.

Leona Bills

Sweetness; patience; modesty.

Home Ec. Club 1, 4; Latin Club 1; El Circulo Espanol 2, 3; Le Cercle Francais 4; Commercial Club 4; Physical Ed. 4.

Evelyn Kenney

Of manners gentle; of affections mild.

Latin Club 1, 2; Commercial Club 3, 4; El Circulo Espanol 3.

Anita Woods

Happy; carefree; content.

Home Ec. Club 1, 3; Latin Club 1, 2; Glee Club 2, 3, 4; Le Cercle Francais 2; Commercial Club 3, 4; Science Club 4; Physical Ed. Club 2; Annual Staff 4.

Floyd Carr

"True merit, like a river, the deeper it is, the less noise it makes."

Band 1, 2, 3, 4; Science Club 2, 4; El Circulo Espanol 2; Football 4; Commercial Club 3; Class Play 3; Glee Club 2.



Dorothy Dalzelle

Hearty laughter; dark eyes; amiability.

Home Ec. Club 1, Latin Club 1, 2; Glee Club 2, 3; Garden Club 2; Physical Ed. Club 2, 3; Le Cercle Francais 3, 4; Commercial Club 4.

Katherine Lyons

Explicit neatness; deep wisdom.

Latin Club 1, 2; Commercial Club 4; Le Cercle Francais 2, 3, 4; Glee Club 2, 3, 4; Home Ec. Club 1.

Mary Frances Thorn

Eyes where modesty with laughter is set.

Latin Club 1; Home Ec. Club 1; Glee Club 2; Commercial Club 3, 4; El Circulo Espanol 2; Garden Club 2.

Charles Parker

His friends—there are many
His foes—are there any?

Latin Club 1, 2, 3; Science Club 2, 3, 4; Commercial Club 3; El Circulo Espanol 4 (Pres.).

THE PARISIAN

JUNIOR CLASS



OFFICERS

President	Carl Morgan
Vice-President	Katherine Nichols
Secretary	Frank Shy
Treasurer	Marian Clarke

CLASS PLAY HIGHLIGHTS

Now, folks, I shall endeavor
To tell you all whatever
I know about the plot and actors
Of the Junior play, and its main factors.
Our handsome hero, the leading man
'Twas Bobby Cooper who thrilled the fans.
He is so reckless and well-to-do
And what he does to the girls isn't new.
Marion Dailey, the heroine, a pretty girl,
Who is caught in her mother's scheming swirl.
The mother is played by Marian Clarke,
Who insists that the girl have "Playboy"
Preston "to spark."
Hayden Carmichael, a gambling father,
From punch boards and horses he goes farther
To speculate for gold on unknown lard
But later finding it to be but sand.
But all is well as in the end
The hero saves the day and then
The hero and the heroine are wed
And he is one who is willingly led.
This play was marvelous, successful, divine,
And all the actors were supremely fine,
Clever, different, unique, no mush,
And now it's time for me to hush.

THE PARISIAN

HOW YOU CAN TELL 'EM

Sonny Faries by his grin,
Frank Shy with a dimpled chin.
Betsy Buckner for her looks,
And Marion Dailey likes secret nooks.
Katherine Nichols because of the boys,
Hayden Carmichael who must have toys.
Jane Richards who likes to talk,
Marian Clarke by the way she walks.
Martha Lair, a solemn pal,
Sally Buckner, our favorite gal.
Dorothy Lair with plenty of ginger,
They say Charlie Carr likes to linger.
John Preston with his powerful blush,
John Ratliff with that awful rush.
Douglas McCabe, oh me, oh my!
He makes Ann Davis sigh and sigh.
Peyton Horton by the way he plays,
And Dave Richmond with a line that slays.
Bobbie Cooper with the girls, a hero,
But with Jim Caldwell he is just a zero.
Altogether the Juniors it seems,
Are the Paris High School "beans."

JUNIOR AUTOMOBILE

Engine (Keeps things running).....Juniors	Water (Desirable).....Charles Carr
Oil (Noiseless but necessary)....John Preston	Brake (Slow but sure).....W. J. Barr
Horn (Loud and noisy)...Hayden Carmichael	Speedometer (Worth looking at).....
Tire (Going places).....Douglas McCabeBetsy Buckner
Glass (Immaculate).....Nell Drake	License (Useless).....Frank Shy
Gasoline (It).....Jane Richards	Screws (Small but needy)...."Sonny" Faries
Radio (Entertaining).....Carl Morgan	Body (Streamline).....Dorothy Lair
Thermometer (Red).....Ann Davis	Key (Starts it).....Katherine Nichols
Gas Tank (Empty).....Ray Shout	Tube (Often goes flat).....Bobbie Cooper
Fender (Can't do without).....Martha Lair	Spotlight (Knows all, sees all)...Jim Caldwell

THE PARISIAN



MEMBERS OF JUNIOR CLASS

Geneva Ashcraft
W. J. Barr
Paul Biddle
Josephine Bowen
Betsy Buckner
Sally Buckner
Rose Burke
James Caldwell
Charles Carr
Hayden Carmichael
Marian Clarke
Robert Cooper
Marion Dailey
Ann Harding Davis
Nell Drake
Edward Faries
Edward Fithian

Kathryn Fryman
Bessie Fudold
Peyton Horton
Lloyd Holladay
Leona Insko
Russell Insko
Helen Johnson
Joe Kelly
Thelma Kenney
Martha Lair
Dorothy Lair
Elsie Mann
Douglas McCabe
Elmer McCord
Carl Morgan
Juanita Ogden

Catherine Morgan
Katherine Nichols
Albert Pogue
Nancy Poe
John Preston
Frank Parker
John Ratliff
David Richmond
Jane Richard
Ray Shout
Frank Shy
Brice Steele
Robert Smith
Thomas Tobin
Charles Thomas
Perry Wassom

THE PARISIAN

AN ATTEMPT TO AROUSE MIRTH AND PATHOS

Here's to old P. H. S.
Of all the schools she's the best
For her we raise our cheers
For her we shed our tears
Her memories'll last through all the years
Here our childhood days were spent
In happy merriment
Here our characters grew
Into something strong and true
And when we go to say goodbye
Why it is hard to even try.

HOW SWEET LIFE WOULD BE

If Dan would freeze that grin
If Edna would lose that laugh
If all the girls made goo-goo eyes
If all the Sophs weren't so green
If the Annual always told the truth

Senior: What would you advise me to read after graduation?
Miss Noland: The "Help Wanted" column.

"What is dumber than two dumb Sophomores?"
Ans.: One smart Freshman.

Peachie: What is a veterinary?
Helen Graves: A place where they keep veterans

"What happened to your girl?"
"She had her face lifted."
"You don't say. Who do you suppose took it?"

Peachie: What is your conception of happiness?
Charme: Nothing to do and lots of time to do it in.

Betty: Archie, isn't Niagara wonderful? I could just stand and look at it forever.
Archie: But wouldn't it be rather trying to go through life with a cataract in one's eye?

Overheard at Tea Dance—

1st Boy: That girl insulted me.
2nd Boy: Yeah, how?
1st Boy: She asked me if I danced.
2nd Boy: That isn't an insult.
1st Boy: But she asked me when I was dancing with her.

Chemistry Class—

Mrs. Collier (assigning a lesson for the next day): "We will take Arsenic for tomorrow."

Miss Batcheldor: John, who was Anne Boleyn?

John Fudold: Anne Boleyn was a flat-iron.

Miss Batcheldor: What on earth do you mean?

John: Well, it says in the history book, "Henry, having disposed of Catherine, pressed his suit with Anna Boleyn."

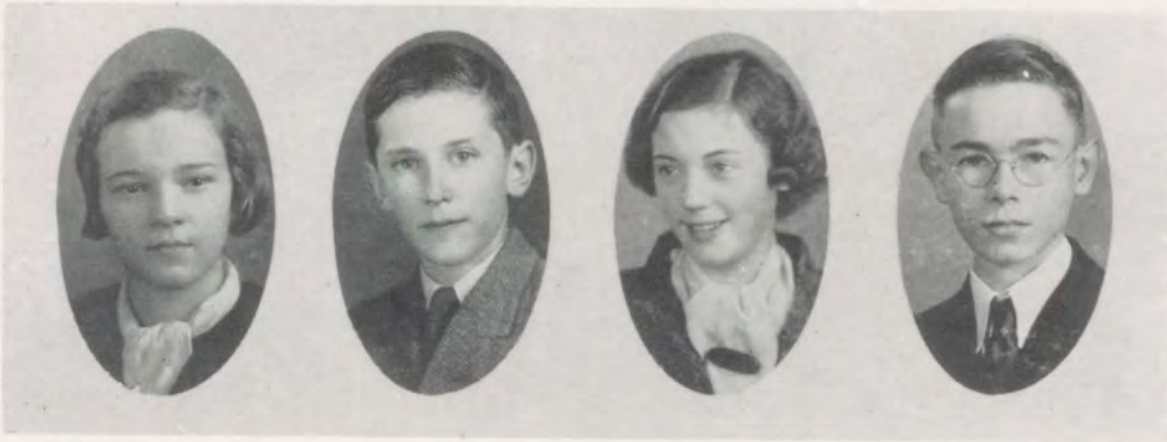
Mr. Ewalt: Well, Jimmy, how did you get along with your examinations?

Jimmy: Just fine, Dad, except in history. Every question they asked me was about something that happened before I was born.

Mrs. Collier thought out loud in her Chemistry class. She was going over the experiments in the manual and when she came to "Dyeing" she said "No, I don't think you would be interested in that." The class agreed.

THE PARISIAN

SOPHOMORE CLASS



OFFICERS:

Pres.....Jane Clay Sutherland
V. Pres.....Milton Rice

Sec.....Charlene Young
Treas.....Lloyd Tune

This Fall seventy Freshmen "tripped the light fantastic" into Senior High to assume the duties of Sophomores. They were cordially (?) welcomed by all the Seniors and Juniors. But now that we have passed the halfway mark, we cheerfully look back over those trying days and note our various achievements as Sophomores.

The class was well represented on both football and basketball squads. We are proud to claim one regular position on the first five and two on the first eleven in the persons of "Duvy" and Charlie. The large number of Sophomores who have crossed over to Miss Blanding's every Tuesday and Thursday has been quite an asset to the Glee Clubs. The band could not get along without its Sophomore members who range from little Randolph to towering "Lene."

Three Sophomores, Catherine LaFrana, Gene Harney and Larry Brannon had the privilege of wearing the coveted choir robes. Mary Eldone Nickerson and Catherine Kennedy have started on the road to oratorical fame in Public Discussion and Extemporaneous Speaking. Not a contest did we Sophomores miss. Ann Wallace Horton, Mary Ellis Chappell and Mary Eldone Nickerson in poetry reading and Douglas Moore, Charles Bratten and Mary Ellis Chappell in solo work, held up the name of Sophomore.

"A PEACH OF A FAMILY"

CAST

John Minogue	Steve Richmond
Mary Eldone Nickerson	Pauline Shelby
Larry Brannon	Frank Manning
Arthur Hollis	August Alonzo Richmond
Charlene Young	Mrs. August Richmond
Jack Baldwin	Jack Belmont
W. O. Shropshire	Cornelius Shelby
Ann Wallace Horton	Mrs. Pickett
Catherine Kennedy	Mary Rose
Mabel Clotfelter	Francine
Mary Ellis Chappell	Millie
Jane Clay Sutherland	Violet

The Sophomore play was under the direction of Miss Cleveland, Miss Lavin and Miss Monson. It was considered one of our greatest accomplishments.

THE PARISIAN

SOPHOMORE FEATURES

Sophomore Theme Song—

“Some of These Days”—We’ll Be Seniors

Peep through the Sophomore Key Hole and see why—

1. Charlie’s telephone bill was so high this month.

2. Lene’s permanents never stay in.

3. John Minogue knows so much French when he doesn’t take it.

4. Mabel likes the Wilsons’ apartment so well.

5. Caffa and Jane White go to the library every afternoon.

6. All the girls started wearing stockings after Jane White’s little chat with Miss Noland.

7. Jack closes his door every afternoon just after the mail from Bowling Green comes.

8. Tanty’s letters come in code and Jack’s don’t.

9. Coach went to Richmond by way of Lexington instead of Winchester (remember Duvy and John were in the car).

10. Geo. Dodson comes in every day at noon.

11. Kay goes around with such a worried look asking for scandal.

SOPHOMORE OUTLOOK ON LIFE

“Lene” Young is to be a saxophone teacher. That’s why she is practicing on “Duvy,” (Poor “Duvy”).

Charlie is our new “Advice to the Lovelorn” writer. His signature is Dorothy Dix Didier.

Mary Ellis Chappell is practicing for her career as a WLAP radio star. We hope she is a great success in both piano and voice.

W. O. Shropshire is going to be a farmer. We can easily tell that by the way he eats.

Charlie Butler is destined to be a farm hand. He thinks anything will do just so he can be near Mary Hinkle.

THE PARISIAN



MEMBERS OF SOPHOMORE CLASS

Jack Baldwin
Dan Barr
Frances Beard
Harold Bell
John Bell
Betty Biddle
Maurice Biddle
Vernon Bowman
Larry Brannon
Charles Bratton
Edward Burke
Charles Butler
Catherine Campbell
Virginia Cavanaugh
Mary Ellis Chappell
Mabel Clotfelter
Sally Davis
Leila DeJarnette

Charles Didier
George Dodson
J. W. Duvall
Frances Gifford
Randolph Gilliam
Woodrow Glover
Harrie Gudgell
Madeline Guyard
Ernest Ham
Gene Harney
Bobby Hazelrigg
Arthur Hollis
Ann Wallace Horton
Jane White Humble
Myrtle Hynes
Elwood Insko
Dan Isgrig

Eugene Johnson
Dorothy Jordan
Catherine Kennedy
Tom King
Catherine LaFrana
Georgia Letcher
Jo Mastin
Lillian McCord
John Minogue
Douglas Moore
Laura Moreland
John Neal
Mary Eldone Nickerson
Annie Payne
Rachel Plummer
Louise Plunkett
Anna Mae Quisenberry

Billie Rankin
Milton Rice
Betty Lindsay Roseberry
Lillian Sargent
Martha Scott
Woodrow Scott
Lena Short
W. O. Shropshire
Georgia Singleton
Nancy Snapp
Melvin Spegal
Jane Clay Sutherland
Sarah Frances Swinford
Lloyd Tune
Juanita Vaughn
Mary Elizabeth Weber
Charlene Young

THE PARISIAN

A FORWARD LOOK

The following article appeared in The Bourbon News in June, 1946. Since we, the Seniors of '36 were the subject of said article, it is reprinted here for our benefit:

"The Senior Class of 1936 held their first reunion Thursday evening, June 4, 1946, at the High School cafeteria. Arrangements for the banquet were made by Miss Pietertje Smits, head of the Home Economics Department. The cafeteria was beautifully decorated with a display of Miss Margaret Hinton's original paintings. Miss Hinton is one of America's most outstanding artists. For sale, at a table in the rear of the room, were fifty copies of Miss Nellie Rash's newest book, entitled "What Everybody's Doing—How, When, and Where." The first to take advantage of such an offer was Miss Rash herself, who still maintains that she reads all the writings of the leading authors.

"After the friendliest of greetings had been exchanged by various class members, Mr. Grover Baldwin, former class president, called the meeting to order. Mr. Baldwin, now considered Hollywood's most popular movie shiek, told us how happy he was to be in Paris again. In so doing, he also voiced the opinion of Miss Naydien Rainey, former class beauty, who has a similar career. Mr. Archie Dotson, orator of fame and renown, and Secretary of the U. S. Dept. of Agriculture, gave the welcoming address, following which Miss Elizabeth Santen, Metropolitan Opera singer, rendered a very beautiful vocal selection.

"Mr. Maurice Lykins, general manager of the Florsheim Shoe Corporation, introduced the principal speaker for the evening, Mr. Robert Nickerson, prominent U. S. senator. Mr. Nickerson chose as the subject of his address, "The Progress of the Class of '36." Excerpts from his speech follow:

"Ten years have passed since we as Paris High School graduates started out on life's highway. Our progress itself is proof that all have succeeded. But the appalling, apaling, apauling, or whatever you call it (not being sure of the pronunciation of the word) situation lies in the fact that our paths have taken widely different directions, and as a consequence, few of us are aware of the progress individual members of the class made. It is my purpose to show you, honorable judges—pardon me—(confused)—that's a hangover from the debating season—to show you what each person is contributing to civilization, and how each person is serving humanity. First of all, may I bring to your attention Dr. Helen T. Hazelrigg's valuable researches in the medical field? Her genius cannot be disputed. Working in the same line, Miss Ann Glass is an indispensable asset to Duke's University hospital, as is Miss Charmie Ewalt, now superintendent of the Good Samaritan Hospital in Lexington.

"In the educational vocation, our class has also starred. Miss Mary Emily Rice is now house mother at M. M. I. where she is active in all social functions, as usual. Miss Dorothy Dalzell and Miss Katherine Lyons are members of the faculty of Bowling Green Business College. In our own Paris High School, a new course in astronomy is being offered, with Miss Mary Hinkle as instructor.

"In driving from Lexington this afternoon, I noticed a very attractive grocery store located on 19th street. I walked in, only to discover that Tony Johnson was managing a wholesale concern, with Evelyn Kenney in charge of local trade. Parked in front of the store was a huge shipping of fruit, and I noticed printed on the side of the truck—USSERY FIGHTMASTER.

"In athletics, Paris High School is still excelling. Willie Tapp's fame as a professional basketball player needs no comment. Goody's record as an All American is envied by more than one former Greyhound. John Fudold's managerial ability is being exercised on the Notre Dame football team. Helen T. Gudgell and Nell Luallen have taken care of the girls' athletic reputation. Both are Physical Ed. instructors.

(CONTINUED ON PAGE 46)

THE PARISIAN



FRESHMAN CLASS

Edward Adams
Carey Adair
Russell Alexander
Margaret L. Arnsperger
Anna Louise Barlow
Josephine Biddle
John T. Bowles
Elizabeth Bramel
John Butler
Geneva Carmichael
Lee C. Cavanaugh
Elizabeth G. Chapman
Dorothy Clark
Dorothy Clough
Alva B. Collins
Alice Connell
Archie Crump
Charles Dalby
Betty Dalzelle

Marjorie Deering
Keller Ewalt
Frank Gilliam
William Grimes
Leonard Grinnell
Adrian Gross
Frazier Haddix
Dorcas Hamilton
Marcus Harlan
Nancy Hinkle
Geneva Humphries
Elsie Johnson
Anna Marie Jones
Myrtle Jones
Lucy W. Kenney
Leona Kenney
John Lee Kirkpatrick
Kenneth Kiser
Donald Lykins
Jack Woods

Katherine McMillan
Betty McMillan
John Mallany
Paul Mann
Stanley Mann
William Mann
Norma Mae Mastin
Edna Mae Mattox
Mary Anna Maupin
Vivian McCabe
Mary Elizabeth McClanahan
Dorothy McCracken
Dorcas McIntyre
Katherine Moore
John Morgan
Robert Myers
Kenneth Ogden
Hazel Parker
Alice D. Phillips
Betsy Woodford

Stanley Richards
William Shire
Chester Skillman
Frank G. Skillman
Katherine Smith
James Smith
Betty Smith
Jesse Jane Spears
Edward Sutherland
Cecil Tankersley
Edward Thacker
Martha Thomas
Houston Thomas
James Tobin
Louise Turpin
Mary Ward
Willmard Watson
Henry L. Williams
Nancy Williams

THE PARISIAN

JOKES AND EVERYTHING

"I don't like your heart action," said the doctor, applying the stethoscope again. "You have had some trouble with angina pectoris."
"You're partly right, Doctor," answered Mary Elizabeth Overby sheepishly, "on'y that's not h's name."
Mrs. Collier (in Biology class): "Deep breathing kills bacteria."
Dumb Sophomore: "But how can I make them breathe deeply?"
Miss Noland (sternly): "Dan, if you can't behave yourself I shall have to take your name."
Dan Sullivan (outside to a chum, confidentially): "My teacher has threatened to marry me if I don't behave."
Miss Batchelder (in history class): "You haven't even studied enough to know what the war was over."
Goody (looking romantically at a girl's picture in front of room): "Yes, I do too. It was over a woman named Alice Lorraine."
Charlie Didier: "You should sue the city, Jane Clay."
Jane C. Sutherland: "Why?"
Charlie: "For building the sidewalk so close to your head."
Communist: "Down with Capitalism."
Burton: "Yeah, and punctuation and theme writing, too."
"I want to make this world a better place. Could you tell me how to go about it?"
"Yes, but I don't believe in suicide."
S. S. Teacher: "Who was it said, 'Whither thou goest, I will go?'"
Boy: "The installment collector."
Robert: "Gosh, you're dumb. Why don't you get an encyclopedia?"
Archie: "The pedals hurt my feet."

Advice to Seniors:
Don't tell everything you know—
You may be asked for an encore.

Dave Richmond: "May I have the next dance?"
Martha Lair: "Sure, I don't want it."

Lives of Seniors all remind us,
We can make our lives sublime
By asking foolish questions
To take up teacher's time.

We find three types of girls in Paris High:
The beautiful, the intellectual, and the majority.

"What can I do for water on my knee?"
"Wear pumps."

Teacher: "Tony, of what is limburger composed?"
Tony Johnson: "It isn't composed, it is decomposed."

"What is publicity?"
"Something we get when we do the wrong thing."

Mr. Scott: "Brown, are you working?"
Brown: "Yes sir, studying."
Mr. Scott: "Congratulations!"

"Who was the smallest man in history?"
"I'm ignorant, who?"
"The Roman soldier who went to sleep on his watch."

"Some shieks are like shoes."
"How's that?"
"The cheaper they are the louder they squeak."

MISCELLANEOUS

"So if you'll have
From all of us
One would be the type
Just add these all together
And of her you then have sight."

PARIS HIGH GIRLS

P leasant—Jean Hadden
A miable—Nellie Rash
R eserved—Gertrude Ellis
I ndependent—Mary Hinkle
S incere—Pietertje Smits
H appy—Louise Royse
I genuous—Mary Lou Fark
G racious—Naydien Rainey
I mpartial—Edna Lytle
R omantic—Mary Emily Rice
L oyal—Elizabeth Santen
S tately—Mary Elizabeth Overby

LETTERS OF INQUIRY FROM SOPHS

1. What is the Class of 1936?

That is not definitely settled. Mrs. Collier at present is studying the species under the microscope. She believes it to be either a species of protococcus, a paprophytic bacterium or an animal descended from similar ancestors.

2. What is it good for?

Absolutely nothing. Living so long in dark corners of the library, both its eyes and intellect have been dulled and it is now especially stupid.

3. Why doesn't Satan claim it?

It is too green to burn and too case-hardened to melt.

4. Is there any remedy for such pests?

Yes. The pests are rapidly destroyed by a process termed flunking. Miss Noland is an expert at this method and we have little doubt but that it will be exterminated before long.

ONLY YESTERDAY



Left to right:

Top row: Jean Hadden, Gertrude Ellis, Edna Lytle, James Ewalt, Floyd Carr, Helen Hazelrigg, Elizabeth Santen.

2nd row: Helen Graves; group, Gertrude Ellis, Jean Hadden, Frances Perling, Anna Wright Campbell.

3rd row: Charles Parker, Mary Hinkle, Fred Smith, Ann Glass, Pietertje Smits.

4th row: Naydien Rainey, Gertrude Fryman; Vaughn Drake.

Last row: Leona and Viola Bills, Jack and Betty Wilson, Mary Lou Park.

SENIOR SNAP SHOTS

"Off Guard"



ORGANIZATIONS

PHYSICAL
EDUCATION
#

FRENCH
CLUB
#

DeBATING

#

COMMERCIAL
CLUB

GIRL
Reserves
#

Home
Economics
#

DRAMATIC

Glee
Club
#

PEP
CLUB

PARISIAN
CIRCLE

LATIN
CLUB
#

#

SCIENCE
#

BAND
#

#



M.L.P.



PARIS HIGH SCHOOL BAND

Director Cleary Fightmaster
Band Sponsor Helen Taylor Hazelrigg
Drum Majors David Richmond, Paul Kenton

Trumpets

Nancy Williams
Stanley Richard, Jr.
Billy Shire
Mary V. Gibson
Randolph Gilliam
Marcus Harlan
John Lee Kirkpatrick
Rex Lyons
Edward Burris
John Lee Roberts

Alto Horn

Robert Insko

Clarinets

Frank Shy
Jane C. Sutherland
Robert Myers
Larry Brannon
Norma Mae Mastin
Alfred Shire
Betty Mae Dalzell
Hamlet Collier, Jr.

Bass Horn

Robert Cooper
Joe Kelley

Saxophones

Billy Dale
Maurice Lykins
Fred Poplin
Billy Grimes
Paul Kenton
Charlene Young

Trombone

Floyd Carr
A. B. Collins
C. R. Parrent
John Gravitt

Drums

Elwood Insko
Hayden Carmichael
Ussery Fightmaster

Baritone

Frank S. Dalzell
Jessie Crump

Cymbal

James Smith

THE PARISIAN



ANNUAL STAFF

Manager	Robert Nickerson
Assistant Manager	Helen Taylor Hazelrigg
Sales Manager	Mary Elizabeth Overby
Assistant Salesmen	{ Dan Sullivan Betty Wilson Jack Wilson Fred Smith Jimmie Ewalt
Treasurer	Edna Garrett Lytle
Assistant Treasurers	Archie Dotson Pietertje Smits Nell Luallen Ann Glass
Class Reporters	{ Louise Royse Nellie Rash Gertrude Ellis
Artists	Margaret Hinton, Martha Plummer
Typists	{ Elizabeth Kenney Helen Graves Amelia Allison Katherine Lyons Anita Woods
Jokes	Charme Ewalt, Naydien Rainey
Athletics	Sue Luallen, Grover Baldwin
Pictures	Elizabeth Santen
Junior Reporter	Katherine Nichols
Sophomore Reporter	Jane Clay Sutherland

THE PARISIAN



PARISIAN CIRCLE

Grover Baldwin
Robert Nickerson
Archie Dotson

Nell Luallen
Pietertje Smits
Naydien Rainey

The Parisian Circle, one of the foremost organizations of the Senior High School, is composed of six Seniors. Four of the members served an apprenticeship before taking on their duties as Senior Parisian Circle members. Two were elected as Sophomores and served two years. Two additional ones were chosen as Juniors, and the remaining two were elected at the beginning of the Senior year. These are all students of merit, leaders in all the school activities. A certain scholastic standing is necessary before qualifying as a Parisian Circle member, and this standing must be maintained. Their duties are to promote all school activities and to set an example for the on-coming Seniors. During the Regional Tournament here they acted as a Committee on Hospitality.

THE PARISIAN



PARIS HIGH SCHOOL CHOIR

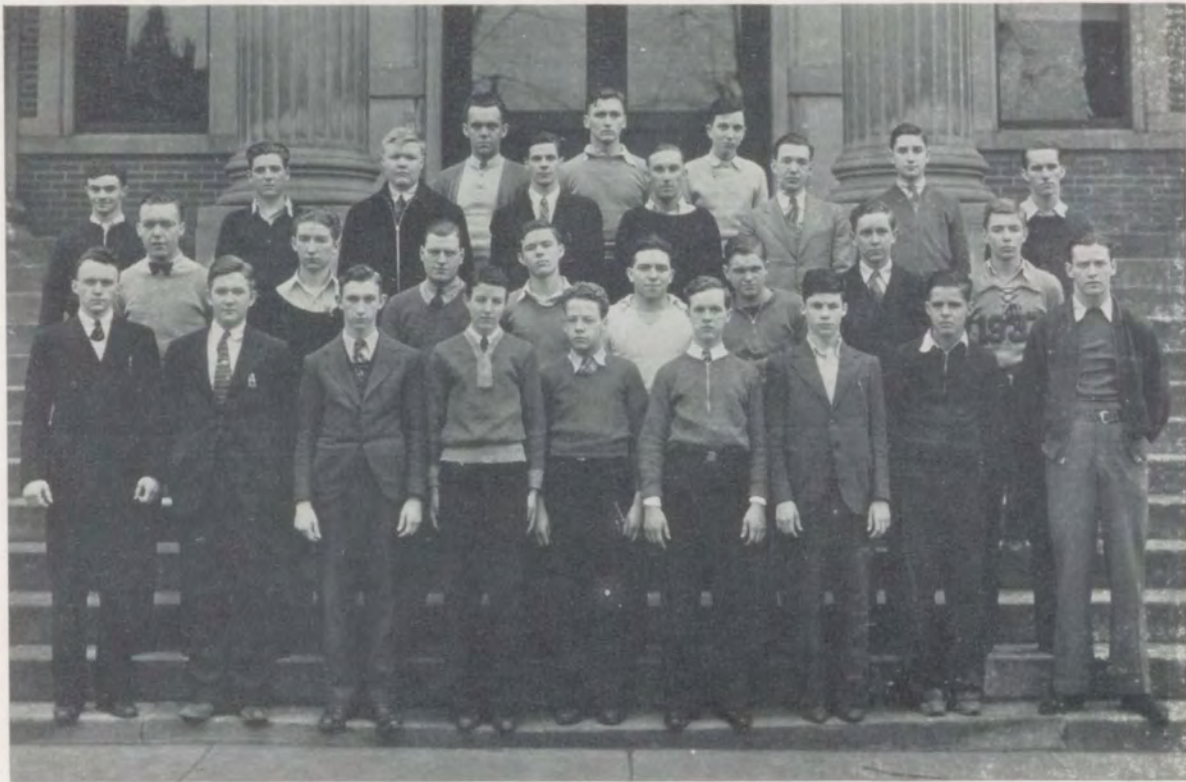
Director Miss Ellen Blanding
Pianist Miss Susan Logan Howard

Catherine La Frana
Mary Elizabeth Overby
Naydien Rainey
Mary Emily Rice
Elizabeth Santen
Betty Wilson
Bessie Fudold
Helen Taylor Hazelrigg

Mary Hinkle
Edna Lytle
Martha Plummer
Louise Royse
Paul Biddle
Hayden Carmichael
Pershing Clough
W. J. Harney

Riley Martin
John Preston
Larry Brannon
Carl Morgan
Frank Parker
J. J. Parrent
David Richmond
Jack Wilson

THE PARISIAN



BOYS' GLEE CLUB

Director Miss Ellen Blanding
 Pianist Miss Susan Logan Howard

Hayden Carmichael
 James Goodman
 Russell Insko
 Maurice Lykins
 Robert McCuddy
 Riley Martin
 Carl Morgan
 John Preston
 Frank Parker

Albert Pogue
 John Ratliff
 David Richmond
 Robert Smith
 Larry Brannon
 Paul Biddle
 Charles Bratton
 Pershing Clough
 Carl Delaney

Willie E. Harney
 J. J. Parrent
 Harold Bell
 Elwood Insko
 James Ewalt
 Douglas Moore
 Everett Mann
 Arthur Hollis
 Melvin Speagal

Jack Wilson

Edward Burke

THE PARISIAN



GIRLS' GLEE CLUB

Director Miss Ellen Blanding
 Pianist Miss Susan Logan Howard

Geneva Ashcraft	Anita Woods	Myrtle Hymes	Anna Mae Quisenberry
Josephine Bowen	Frances Beard	Dorothy Jordan	Elizabeth Santen
Marian Clark	Betty Biddle	Helen Johnson	Lillian Sargent
Ann Harding Davis	Vernon Bowman	Catherine Kennedy	Martha Scott
Bessie Fudold	Virginia Cavanaugh	Catherine La Frana	Lena Short
Ann Glass	Catherine Campbell	Edna Lytle	Georgia Singleton
Jean Hadden	Mary Ellis Chappell	Lillian McCord	Nancy Snapp
Mary Hinkle	Mabel Clotfelter	Jo Mastin	Jane Clay Sutherland
Thelma Kenney	Lelia De Jarnett	Elsie Mann	Rose Swirn
Mary Elizabeth Overby	Charme Ewalt	Laura Moreland	Louesa Watson
Martha Plummer	Catherine Fryman	Mary Eldone Nickerson	Mary Elizabeth Weber
Naydien Rainey	Frances Gifford	Annie Payne	Charlene Young
Mary Emily Rice	Ann Wallace Horton	Rachel Plummer	Betty Wilson
Louise Royse	Jane White Humble	Louise Plunkett	Juanita Vaughn
Edith Speakes			

THE PARISIAN



THE GIRL RESERVES

Presidents	Mary Elizabeth Overby, Ann Glass
Vice-President	Ann Glass
Secretary	Nadien Rainey
Treasurer	Nell Drake

The Paris Chapter of the Girl Reserves is one of the most active organizations of High School. Since its founding in 1926, it has instituted many useful projects. Among them this year was a Christmas Tree for the underprivileged children of the first six grades. At Thanksgiving, food and clothing were collected for the Health and Welfare League. During the year, several Tea Dances have been given, the proceeds of which have been used to remodel the girls' dressing room.

In carrying out these activities, there are certain aims which we strive to follow. These are found in the Girl Reserve Code:

Gracious in manner	Seeing the beautiful
Impartial in judgment	Eager for knowledge
Ready for service	Reverent to God
Loyal to friends	Victorious over self
Reaching toward the best	Ever dependable
Earnest in purpose	Sincere at all times

The success of our organization is due to the interest and untiring efforts of our sponsor, Miss Batchelder. She has inspired all Girl Reserves to put forth their best and strive to live up to the Girl Reserve Code.

THE PARISIAN

CLUB OFFICERS



HOME ECONOMICS CLUB

President Ann Harding Davis Vice President Vivian McCabe
Secretary and Treasurer Dorothy Lair

JUNIOR AND SENIOR LATIN CLUB

President Anne Glass Secretary Marian Clark
Vice President Nell Drake Treasurer Marion Dailey

SOPHOMORE LATIN CLUB

President John Minogue Vice President Jane Clay Sutherland
Secretary and Treasurer Milton Rice

SPANISH CLUB

President Charles Parker Secretary Elizabeth Kenney
Vice President Dean Tucker Treasurer J. J. Parrent

FRENCH CLUB

President Mary Elizabeth Overby Secretary Pietertje Smits
Vice President Dorothy Lair Treasurer Douglas McCabe

JUNIOR GARDEN CLUB

President Jack Baldwin Secretary Rachel Plummer
Vice President Peyton Horton Treasurer Woodrow Glover

GIRL RESERVES

Presidents, Mary Elizabeth Overby, Edna Lytle Secretary Naydien Rainey
Vice President Anne Glass Treasurer Nell Drake

THE PARISIAN



ORANGE AND BLACK

PRESENT MEMBERS

Betsy B. Woodford
Bobby Myers
Norma M. Mastin

Elizabeth G. Chapman
Lucy W. Kenney
Betty M. Dalzell

Nancy Hinkle
Margaret Arnsperger
Martha Thomas

Mary Anna Maupin
Mary Ward

Seniors who signed the Orange and Black Book:

Louise Royse—3 years
Helen Taylor Hazelrigg—3 years
Pietertje Smits—3 years
Grover Baldwin—2 years
Edna Lytle—2 years

Ann Glass—2 years
Elizabeth Santen—1 year
Mary Elizabeth Overby—1 year
Mary Hinkle—1 year
Robert Nickerson—1 year

Charme Ewalt—1 year

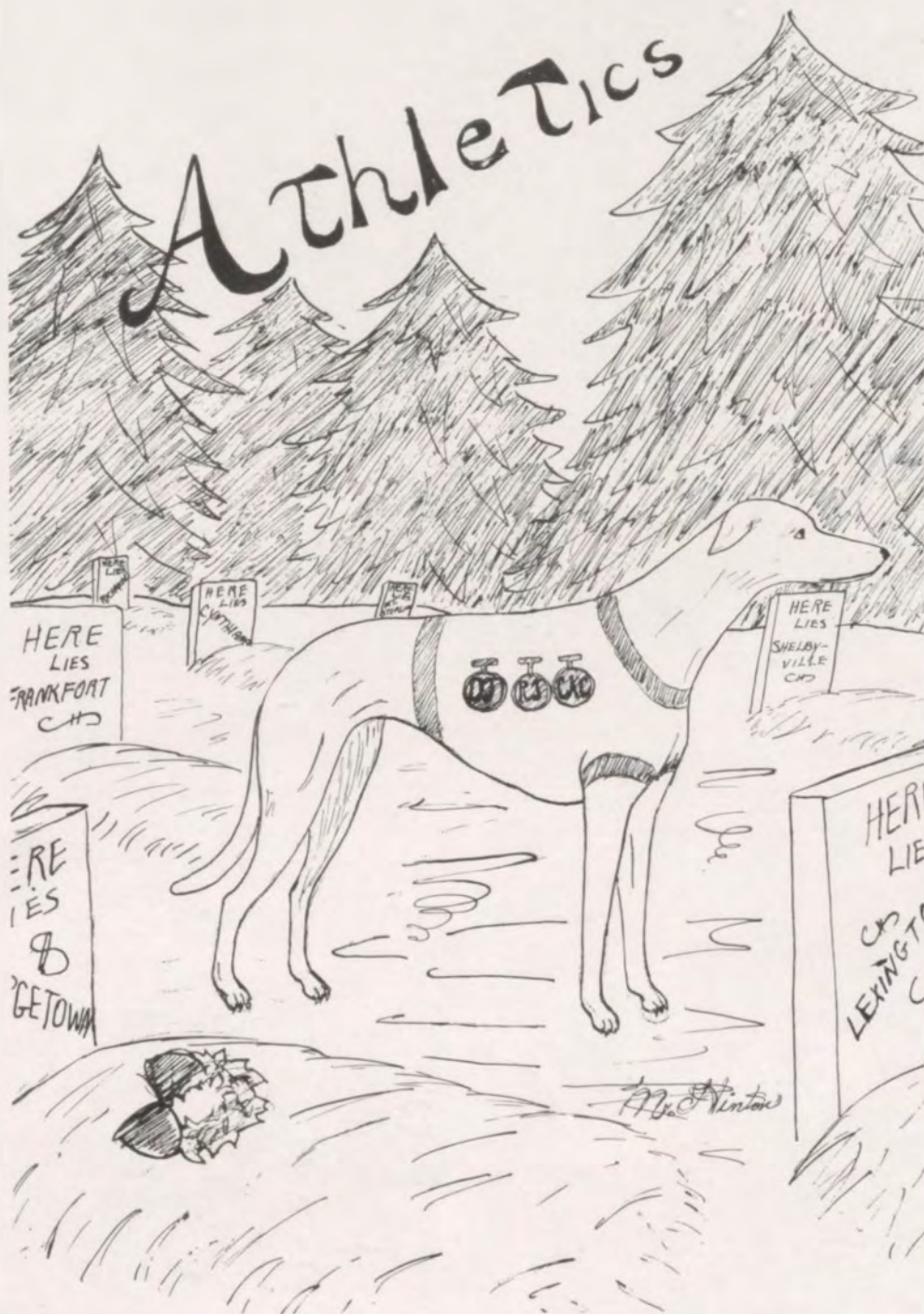
THE ORANGE AND BLACK BOOK

The most coveted honor which may come to a Junior High student is the privilege to write in the Orange and Black Book. This honor is bestowed upon outstanding students by the rest of the students and the faculty.

This impressive ceremony originated in the spring of 1928 at the suggestion of the Junior High Camp Fire Girls sponsored by Miss Ethel Congleton, then head of the Junior High Latin Department.

The bases for selection of the students for this honor are the following: Willingness to co-operate with all parts of the school's activities; high achievement in their work; an interest in the scholastic and extra-curricular side of their education, a participant or loyal supporter of the school's athletics; their attitude toward their fellow students; ability at all times to abide by school regulations; their loyalty and faithfulness to its ideals. In short, it is an attempt to emphasize those traits which enter into the making of worthwhile citizens of the future.

Athletics





PARIS HIGH SCHOOL CHEER LEADERS

Sue Luallen—Head Cheer Leader

Larry Brannon

Nell Luallen

David Richmond

Helen Hazeligg and Louise Royse—Pianists

JUNIOR HIGH FOOTBALL SQUAD

1. Joe Goodman
2. Marcus Harlan
3. John Lee Kirkpatrick
4. J. Parrish
5. D. Parrish
6. Cecil Tankersley
7. Matt Lair
8. James Tobin

9. Bobby Myers
10. Carey Adair
11. J. P. Morgan
12. Billy Price
13. Jack Woods
14. Frank Gilliam
15. Nick Nicholas
16. Keller Ewalt

17. Ned Adams
18. R. S. Harney
19. George Moore
20. Edward Sutherland
21. H. L. Williams
22. Donald Lykins
23. J. T. Bowles, Mgr.

THE PARISIAN



COACH BLANTON COLLIER
A. B., Georgetown College

LONG HAVE WE RECOGNIZED AND HONORED THE ABILITY OF COACH COLLIER, AND WE POINT TO HIM WITH PRIDE AS BEING OUR COACH. MR. COLLIER STARTED HIS COACHING CAREER AT PARIS HIGH SCHOOL IN 1927. HE PROCEEDED TO PUT THE GREYHOUNDS IN FRONT RANK, AND OVER A SPAN OF NINE YEARS HE HAS KEPT THEM THERE AGAINST INCREASINGLY STRENUOUS COMPETITION. HIS STANDARDS ARE HIGH, AND HE HAS EXERTED TREMENDOUS INFLUENCE ON THE LIVES OF HIS PLAYERS THROUGH HIS FINE CHARACTER AND QUIET BUT FORCEFUL PERSONALITY. EVERY BOY WHO HAS PLAYED UNDER HIM COUNTS HIM AS A REAL FRIEND.

SO—HATS OFF TO COACH COLLIER! FOR YEARS WE HAVE SHARED HIS SUCCESS, AND NOW WE REJOICE IN HIS HONOR. MAY HIS TEAMS CONTINUE TO BRING GLORY TO DEAR OLD PARIS HIGH.

COACH COLLIER'S RECORD IN BASKETBALL SINCE 1927

	Won	Lost
1927-28	11	7
1928-29	12	8
1929-30	10	6
1930-31	17	1
1931-32	23	1
1932-33	20	2
1933-34	16	9
1934-35	17	9
1935-36	28	2

Since 1927 Coach Collier's football teams have played 53 games.

Won.....31 Tied.....4 Lost.....18

THE PARISIAN

FOOTBALL TEAM



Blanton Collier Coach
 Dick Butler Asst. Coach
 Grover Baldwin Mgr.
 L. B. Swinford Asst. Mgr.

John Fudald End
 Lloyd Holliday End
 Elmer McCord Halfback
 Brice Steele Guard
 Douglas McCabe End
 Edward Faries Center
 J. W. Duvall Halfback

Peyton Horton Halfback
 Robert McCuddy Guard
 Tony Johnson End
 James Ewalt Tackle
 Charles Didier Halfback
 W. J. Barr Fullback

Joe Kelley Tackle
 James Goodman, Quarterback
 (Captain)
 Ray Shout Center
 Maurice Lykins Tackle
 Floyd Carr Tackle

RECORD FOR SEASON

	Paris	Opponents		Paris	Opponents
Somerset	6	7	Mt. Sterling	14	0
Shelbyville	0	7	Winchester	20	0
Covington	0	64	Richmond	13	6
Georgetown	25	6	Frankfort	39	0
Maysville	6	0			

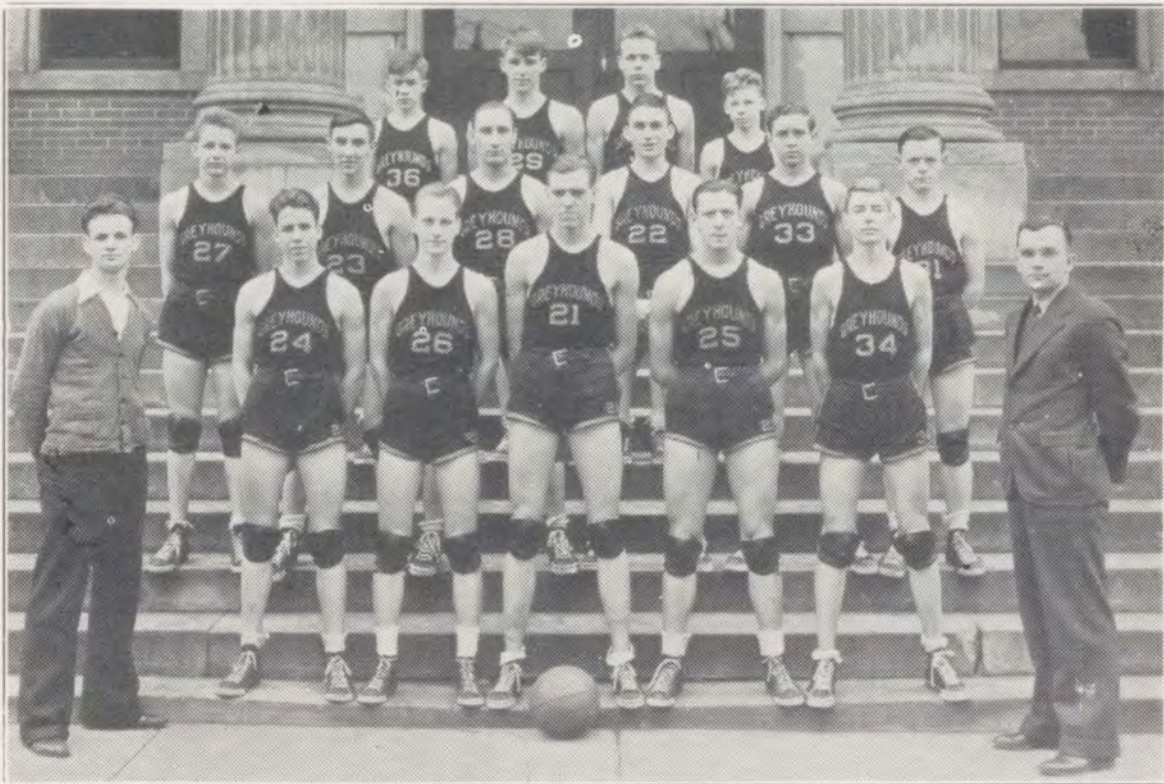
The Paris High School Football team had a very successful season this year by winning six out of nine games, losing the first three games. The Greyhounds led by Lykins, Fudold, Ewalt, and Captain Goodman, came back against terrific odds to win the remaining six games. Encouraged by their 25-6 victory over Georgetown they showed perfect form in defeating the highly favored Maysville team. Realizing their strength, the Greyhounds coasted through the next three games and successfully closed the season by overwhelming the strong Frankfort Panthers by a score of 39-0.

Although the veteran Captain Goodman did most of the scoring, Didier, Duval, Horton, Barr and McCabe, nearly all first year men, turned in excellent performances. These boys showed plenty of class, and we expect a lot from them next year.

Although the Greyhounds did not win the C. K. C. Championship this year, they lived up to the standards of the school by finishing well up among the leaders.

THE PARISIAN

BASKETBALL



Grover Baldwin Guard (Captain)

J. W. Duvall Guard
James Goodman Forward
John Ratliff Forward
Willie Tapp Boaz Center
Peyton Horton Forward

W. J. Barr Forward
Charles Butler Guard
Douglas McCabe Forward
Harold Bell Guard
Ray Shout Guard

SEASON'S RECORD

	Paris	Opponent		Paris	Opponent
Bagdad	34	6	Lexington	36	17
Cynthiana	33	12	Richmond	20	14
Waldron, Indiana	23	15	Mt. Sterling	31	17
Newport	21	25	Frankfort	43	10
Shelbyville	16	14	Richmond	21	15
Dixiana	24	14	Lexington	36	21
Frankfort	35	4	Georgetown	40	21
Winchester	32	6	Winchester	16	10
Cynthiana	36	11	Lancaster	67	4
Georgetown	46	21			

TOURNAMENT RECORDS

DISTRICT

Paris 26—M. M. I. 24
Paris 22—Carlisle 20
Paris 42—Ruddles Mills 14

REGIONAL

Paris 35—Cynthiana 16
Paris 30—Berry 29
Paris 35—Minerva 20

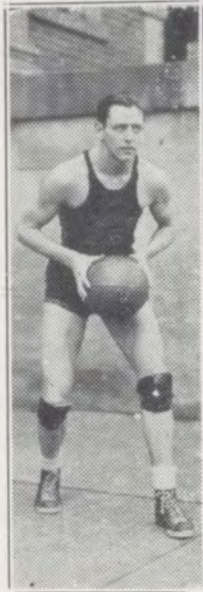
STATE

Paris 18—Midway 17
Paris 20—Newport 7
Paris 19—Corbin 33

THE PARISIAN



John Ratliff



James Goodman



Peyton Horton



J. W. Duvall



Will Tapp Boaz



Grover Baldwin

HONORARY TEAMS

Paris was well represented on the honorary teams this year.

LYKINS—All-C. K. C. in football.

FUDOLD—Second All-C. K. C. in football.

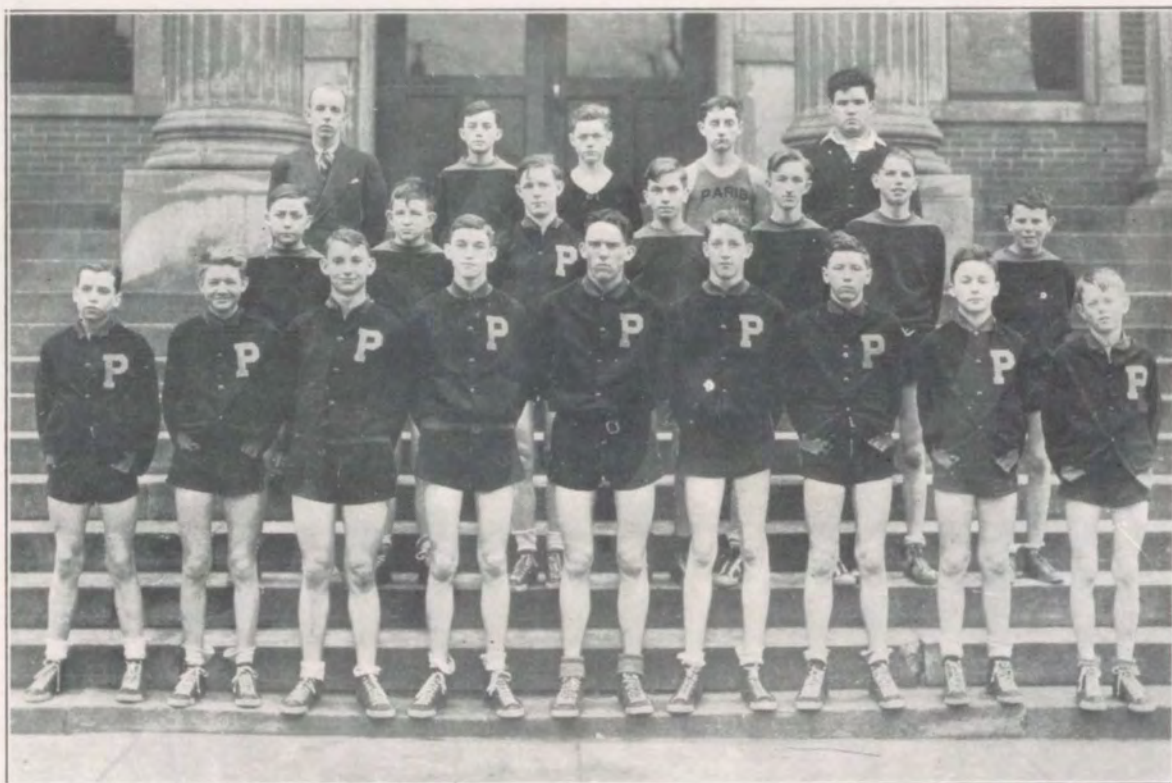
GOODMAN—Captain of the second All- C. K. C. team in basketball.

Horton—Honorable mention on All-C. K. C. in football.

EWALT—Honorable mention on All-C. K. C. in football.

BOAZ—All-State team, All-C. K. C. team, and All-Regional team in basketball.

BALDWIN—All-Regional team and the second All-C. K. C. team in basketball.



JUNIOR HIGH BASKETBALL SQUAD

- | | |
|-------------------------|------------------------|
| 1. Joe Goodman | 12. D. Parrish |
| 2. Marcus Harlan | 13. James Smith |
| 3. Bobby Myers | 14. R. L. Harney |
| 4. Lee Cavanaugh | 15. Billy Young |
| 5. John Lee Kirkpatrick | 16. Donald Lykins |
| 6. John Butler | 17. C. P. Parrent |
| 7. Billy Mann | 18. Paul Kenton |
| 8. Carey Adair | 19. Lockhart Spears |
| 9. Cecil Tankersley | 20. J. P. Morgan |
| 10. Jack Woods | 21. John Mallany, Mgr. |
| 11. J. Parrish | 22. James Tobin, Mgr. |

THE PARISIAN

SEASON'S RECORD JUNIOR HIGH SCHOOL

	Paris	Opponents
Cynthiana	25	4
Taylor Tire	37	12
Taylor Tire	11	4
Lexington Jr. High	11	28
Morton Jr. High	18	13
Georgetown	24	13
Cynthiana	24	6
Georgetown	27	8
M. M. I.	20	6
Lexington Jr. High	13	9
Mt. Sterling	15	5
Irving	33	31
Morton Jr. High	32	12

TOURNAMENT RECORD

Paris 36.....	Georgetown 17
Paris 17.....	M. M. I. 11
Paris 19.....	Irving 17

RESUME OF VARSITY BASKETBALL SEASON

Playing one of the hardest schedules ever attempted by a Kentucky High School team, Coach Collier's Greyhounds won eighteen out of nineteen games during the regular playing season and all fifteen of their conference games. The Greyhound netters were conceded the C.K.C. Championship for the fourth time in nine years.

Entering the District Tournament as the underdogs, they defeated the powerful and inspired M. M. I. and Carlisle teams and easily won the "CROWN" by crushing Ruddles Mills by a score of forty-three to fourteen.

After winning the District Tournament, the Greyhounds came home to participate in the Regional Tournament. By defeating Cynthiana, Berry and Minerva, they earned the privilege of playing in the State Tournament. Showing perfect form in defeating Midway and soundly trouncing Newport, the favorites, in the most outstanding game of the tournament, Paris advanced to the semi-finals.

Many sports writers said that the Greyhounds presented the best coached team and the best group of ball handlers seen in the University of Kentucky gym since the New York Celtics, which is the outstanding professional basketball team in the United States.

The team's record this year is one of the best in the history of Paris High School, and we are indeed proud of their excellent showing.

THE PARISIAN

FUTURE ADDITIONS TO OUR LIBRARY

How to Work the Boys.....	Nell Luallen
How to Woo and Win.....	Archie Dotson
Science of Borrowing	Sally Buckner
Idle Thoughts of Idle Fellows	Fred Smith, J. J. Parrent
How to Get Through Hi School Without Studying.....	Willie T. Boaz
The Story of a Final Exam.....	Jimmy Ewalt
Paris after Dark	Edward Fithian
Home Rule	Jean Hadden
Art of Smiling	Pietertje Smits
Bridges I Have Burned	Helen Hazelrigg
Sadness of Parting	Grover Baldwin
Art of Argument	Vaughn Drake

CLASS HISTORY

(CONTINUED FROM PAGE 6)

CHAPTER IV.

1. So the last year came and the Junkers were "Seniorites."

2. And again it came to pass that the "Seniorites" had great warriors both in football and in basketball.

3. But it so happened that the disciples of the basketball army had great and strong men and they did battle mightily.

4. And many were the games that were won.

5. But it was so caused that they did fight an army with a giant, and though our army ran 'round the floor many times the giant did not fall.

6. And David was not to be found in their midst, and so they were defeated and great was the weeping and wailing among the disciples when they saw the army beaten.

7. But so great was the grief that the clouds did open and the skies above the clouds, and the snow and the rain did fall.

8. And for many weeks the weather was cold and the snow was deep and the skies grieved overmuch that our army should be beaten.

9. Therefore, it was caused that the mid-term trials be put off until the weather should clear its eyes of the snow and the streets of their mud and the disciples of their knowledge.

10. And it came to become the custom that all who still had an appendix should have it out and they did and they felt better.

11. But some there were who left the temple and did not come back and they decreased the number of disciples from three score and eleven to three score and three.

12. And during the passing of time there was much going-on of happenings.

13. And among these were the singing of songs, and the speaking of minds, and the writing of poems.

14. But again there was much shaking of heads and of the whiskers of old men's beards for they did doubt the acclaims of the disciples' kin.

15. And few there were who doubted not with them, and so passed the year.

16. And in the end, all things were cleared of their misunderstanding and the disciples rejoiced because they wished to scramble the rest of the days of their lives.

THE PARISIAN

HONORS IN THE DEPARTMENT OF MUSIC

In the District Music Contest held at Georgetown the following students won first place:

SOLOS:

Mary Emily Rice—Mezzo-Soprano
Riley Martin—Tenor
Hayden Carmichael—Baritone
Douglas Moore—Bass

MALE QUARTETTE:

Riley Martin, Hayden Carmichael, Carl Morgan and James Goodman

MIXED QUARTETTE:

Mary Ellis Chappell, Louise Royse, Hayden Carmichael and Carl Morgan

OCTETTE:

Nadien Rainey, Mary Emily Rice, Bessie Fuld, Martha Plummer, Pershing Clough, Hayden Carmichael, Carl Morgan and Maurice Lykins.

STATE MUSIC CONTEST:

Hayden Carmichael, baritone—Excellent
Boys' Chorus—Superior
Mixed Chorus—Superior
Girls' Chorus—Excellent
Junior High Chorus—Excellent

A FORWARD LOOK

(CONTINUED FROM PAGE 22)

"As entertainers our class has shown remarkable progress. Floyd Carr is band director now, and Pershing Clough may be heard any afternoon at four o'clock over WLAP. Riley and Mary Elizabeth Martin have just returned from an extensive tour, where they appeared in concerts with leading artists. Louise Watson acted as manager and arranged dates for appearances. I am sure you are looking forward to Redpath Chautauqua week, at which time you will be privileged to hear Miss Royse. Edna's secret ambition has been realized at last, and now she is an important figure in the dramatic world. Broadway is the recipient of her talent. Amelia Allison is supervisor of music at Corbin, where she spends her spare time studying law with John Ruggles. Of course Vaughn Drake's poetry makes him as amusing as Jack Benny could ever have been, and L. B. Swinford has taken Joe Penner's place in the hearts of the American public.

"Leona is also serving the public. She has opened up a dress shop here, and Parisians have ceased shopping in Lexington at last. Martha Plummer is partly responsible for that phenomenon as she designs all clothes sold at the Bills' Shop. William Cooper is postmaster general now, and is very active in civic affairs. Jack Wilson is a prominent electrical engineer. Russell Faulk's shyness has always been his weakness, but on his farm, alone, he makes rapid progress. Robert McCuddy became interested in restaurants years ago, and now has one of his own. Charles Parker and Everett Mann have opened up a Farm Implement Company. Carl Delaney and Dan Sullivan have a poultry house, but Dan still insists that he was born to hobo, and some day he is going to take time off and try it. Elizabeth Kenney does stenographic work in The Lexington Leader offices.

"Our matrimonial score is not so bad either. Anita Woods is driving all sorts of good looking automobiles around, and being known as Mrs. Grilloit. Edith Speakes does all the telephoning she pleases, which consists in calling Clark county quite frequently. It's a habit but there are two reasons for it. I still notice Burton Violett and Mary Lou Park going to shows together. Mary Frances Thorne, Helen Graves, and Frances Scott all have Mrs. attached to their names now. Sue Luallen did extensive work in Religious Education at Southwestern Seminary, but it was all to no avail—she married the Prof. Mary Elizabeth still talks about Carl, only it's a little more confusing now than it used to be, because you never know whether she means her husband or her small son. Just before our program started, I was talking to Jean. She told me with a beaming smile that she had persuaded Brice to feed the chickens and put the children to bed, so she could manage to attend our program."

"Following Mr. Nickerson's address the gathering ended as all Paris High School entertainments do—with the crowd going to Spike's and the Sweet Shop, now under the respective management of Mr. Fred Smith and Mr. James Ewalt."

Notice: All Seniors are advised to keep this newspaper clipping for future reference.

THE PARISIAN

CLASS NIGHT PROGRAM

JUNE 3, 1936

President's Address	Grover Baldwin
Historian	Edna Lytle
Solo	Riley Martin
Prophet	Nellie Rash
Piano Solo	Helen Taylor Hazelrigg
Grumbler	
Sextette.....	Elizabeth Santen Charme Ewalt Betty Wilson Edith Speakes Martha Plummer Nadien Rainey
Giftorians	Mary Elizabeth Overby and Robert Nickerson
Piano Solo	Ann Glass
Will Maker	Louise Royse
Double Quartette	James Goodman Jack Wilson James Ewalt Robert McCuddy Pershing Clough Everett Mann Maurice Lykins Carl Delaney
Farewell Address	Gertrude Ellis

SENIOR CLASS PLAY "THIRTEEN DIAMONDS"

MAY 22, 1936

The climax of the dramatic performances of the school came in May when the Senior Class presented the comedy, "Thirteen Diamonds."

The cast consisted of the following:

Milly Skidmore—A youthful looking middle aged woman	Mary E. Overby	
Kate Byrd—A caustic reporter from the city.....	Elizabeth Santen	
Beulah Bascom—A dramatic young romanticist.....	Nellie Rash	
Maud Pingree—Miss Pingree's attractive adopted niece	Gertrude Ellis	
June Edwards—The poor niece of Miss Pingree.....	Helen Hazelrigg	
Panola Johnson—A lanky colored girl.....	Ann Glass	
Alice Pease	The three sisters.....	Jean Hadden
Adrienne Pease.....	who long for	Edna Lytle
Anne Pease	individuality	Louise Royse
Bartlett Pingree..Maud and June's uncle.....	Archie Dotson	
Richard Wyngate—An attractive young lawyer.....	Robert Nickerson	
Doctor Ainsworth—A likeable young doctor.....	James Goodman	
James Shaw—Beulah's admirer	Vaughn Drake	
Arthur Bronson—A friend of the Pease girls.....	Floyd Carr	
Director	Miss Zerelda Noland	

THE PARISIAN

COMMENCEMENT CALENDAR

PARIS CITY SCHOOLS

May 13	1:45 P. M.	Latin Club gives Roman Style Show.
May 15	10:00 A. M.	Rhythm and Harmonica Band Concert.
May 19	9:30 A. M.	Kindergarten Commencement.
May 22	2:00 P. M.	Activity Day.
May 22	8:00 P. M.	Senior Class Play "THIRTEEN DIAMONDS."
May 26	8:00 P. M.	Recital, pupils of Misses Cleveland and Howard.
May 27	2:30 P. M.	Play "PETER PAN," pupils of Mrs. W. H. Whitley and Miss Cleveland.
May 28	2:30 P. M.	South Side Elementary School Commencement.
May 29	11:00 A. M.	Moving Day.
May 29	1:00 P. M.	Orange and Black program.
May 29	8:00 P. M.	Recital, pupils of Miss Betsy Ray.
May 31	7:45 P. M.	Baccalaureate Sermon, Methodist Church—Rev. A. Warren Huyck.
June 1	8:00 P. M.	Recital, pupils of Mrs. W. H. Whitley.
June 2	7:30 P. M.	Recital, pupils of Mrs. W. H. Whitley.
June 2	9:00-12:00 M.	Junior Prom.
June 3	10:00 A. M.	Junior High School Commencement—Address, Dr. T. T. Jones.
June 3	8:00 P. M.	Senior High School Class Day Exercises.
June 4	10:00 A. M.	Senior High School Commencement—Address, Miss Sarah Blancing.
June 4	6:00 P. M.	Alumni Banquet.

ALUMNI NOTES 1935-36

- Thelma Carmichael—Queen of the Winter Carnival—Morehead State Teachers' College.
- Sam Milner—Staff of the Kentucky Law Journal.
- Melvin Link—Treasurer of Phi Kappa Tau fraternity at Transylvania.
- Power Prichard—Made perfect standing first semester at the University of Kentucky.
- Sam Milner—Pledged to Phi Alpha Delta legal fraternity, University of Kentucky.
- Edwina Gorey—Appointed to serve on the Publicity sub-committee of Pan-Politikon organization, University of Kentucky.
- Jean Allen—Initiated into Chi Delta Phi, national woman's literary honorary fraternity, University of Kentucky.
- James S. Wilson—Elected President of Senior Class, Law School, University of Michigan, and is high man in scholastic standing in his class.
- Kate Mann—Leading role in Sophomore Play, Randolph Macon Woman's College; elected to membership in the International Relations Club; Member of Sock and Buskin Club.
- Ann Wallace Shropshire—Member Sock and Buskin Club, Randolph Macon Woman's College.
- Anne Catharine Young—Member of Omega Secret Social Society, College Glee Club, College Debating Club, and Freshman Hockey Team, Randolph Macon Woman's College.
- Helen Farmer—President Alpha Gamma Delta Sorority; Pledged to Mortar Board, University of Kentucky.
- Constance Kennedy—Elected President of the Southern International Collegiate Association of Student Government, Junior Chairman of May Day Program, President of Quill Drivers Club (Randolph Macon).
- Edwin Campbell—President Phi Alpha Delta, honorary Law Fraternity, University of Kentucky.
- Betsy Allen—Awarded silver cup given by the Chi Omega sorority for best all-round freshman, University of Kentucky.
- Karl Lusk—King of the May at May Day exercises, Georgetown College.
- Ann Clay Hinkle, Melvin Link and Wolford Ewalt—Elected to the Court of Honor for Transylvania Day.
- Joe Greer—Upper 10% in Scholarship, Northwestern University; has received Scholarship certificate for 1933, 1934, 1935.
- James Anderson—Selected editor-in-chief of the "Kentuckian" for 1937, University of Kentucky.

THE PARISIAN

LATIN CLUB PROGRAM

The last Latin Club program of the year was given by the Senior High School Latin Club on Wednesday, May 13, 1936. The guest speaker for the occasion was Mrs. Frank Adams, head of the Latin Department of Eastern State Teacher's College, whose address was of great interest to all. Other guests present were the French and Spanish students of the Senior High School and the Latin Students of the Junior High School.

The meeting was in charge of Ann Glass, president of the club, who called the meeting to order and introduced the speaker of the afternoon. The opening number was the singing of America. The students had adopted this as their club song. The sophomore Latin Club then chose to sing their own particular theme song, "Quo, Oh, Quo Canis Meus Est."

The club presented as their program a Roman Style Show, showing various types of dress worn by those of different stations in life. Louise Royse, as a herald, introduced the style show, which gave those present a view of Roman clothing, ranging from that of the Peasant to that of the Emperor.

The cast was as follows:

Herald	Louise Royse	Attendant	Mary Lou Park
Peasant Boy	Nell Luallen	Lictor	Jack Baldwin
Slave Girl	Nell Drake	Consul	John Minogue
School Boy	Larry Brannon	Flamen	Eugene Johnson
School Girl	Edna Lytle	Vestal Virgin	Betty Wilson
Maiden	Mary Hinkle	Charioteer	W. O. Shropshire
Bride	Jean Hadden	Standard Bearer	Tom King
Matron	Marian Clark	Imperator	Jim Caldwell

FRESHMAN CLASS PLAY "LOOKIN' LOVELY"

FRESHMAN PLAY CAST:

Persimmon, colored servant in the Bordine home	Betsy B. Woodford
Winnie Bordine (who inherited the debt-ridden Bordine farm)	Elizabeth G. Chapman
Amarilla, village postmistress and broadcaster	Margaret L. Arnsperger
Buddie, brother of Winnie	Edward Sutherland
Clytie, sister of Winnie	Geneva Carmichael
Jennie Mathews (a friend of Winnie's now on the stage)	Mary Anna Maupin
Speed Hawkins (the sheriff whose one desire is to catch Amarilla)	Billy Grimes
Esther Hastings (who has been abroad)	Norma M. Mastin
Bill Baker (promoter looking for something to promote)	Bobbie Myers
Jim Dugan (his pal and fellow-promoter)	Carey Adair
Cholly (a dramatic critic)	John Lee Kirkpatrick
Moe (a theatrical producer)	Marcus Harlan

Time: The present, Summer.

PLACE: Interior of the Bordine Farm House.

THE PARISIAN

AUTOGRAPHS

1936

THE PARISIAN

BUSINESS PATRONS

Dr. R. C. Bate
J. C. Penney Company
Dr. B. N. Pittenger
Davis Funeral Home
Winters Jewelry Store
Daugherty Paint Shop
Price & Co.
Ardery Drug Store
Gibson Motor Co.
Sweet Shop
Varden Drug Store
Grinnell Dry Cleaning
Wollstein Clothing Store
Mr. Bob Rose
Baldwin Garage
Mansfield & Jefferson
Dr. H. E. Mathers
Dr. Eugene Hayden
Mr. Silas Bedford
J. J. Newberry Company
La Rose Beauty Shop
Mr. Clarence Thomas
Mr. Ussery Wilder
City Light & Power Co.
Bourbon Theatre
Mr. Bernard Santen
Dr. S. M. Rickman
Wheeler Furniture Co.
Friedman Shoe Shop
Raymond Connell
Worick Brothers Gargae
Mr. Pearce Paton
Mr. Graham Young
Betts-Moore Service Station
Mr. Power Prichard

Mr. Thomas Johnston
Woodford Spears Company
Mr. Catesby Spears
National Bank & Trust Co.
Home Appliance Co.
Mr. Edward Gorey
Ford & Company
I. G. A. (Mr. Glass)
Mr. Elmer Wallace
Nick's Place
Bourbon Lumber Co.
Mr. Elies Elvove
Mr. Carlton Williams
Mr. Monroe Mansfield
Mr. Ralph Connell
Baldwin Hotel
Lavin & Connell
Mr. Raymond Weigott
Mr. Shack Parrish
Commercial Garage
Benton Beauty Shop
Pete Sheeler (Lumber Co.)
Miss Eleanor Lytle
Mr. Joe Mitchell, I. G. A.
Christman Florist Shop
Smits Florist Shop
Mr. Ford Brent
Windsor Hotel
Dr. H. E. Foster
Flora Coal Co.
Shively Meat Market
Merringer Regal Store
Howard's Grocery
Strickler Furniture Company

The End



M. WINTON

