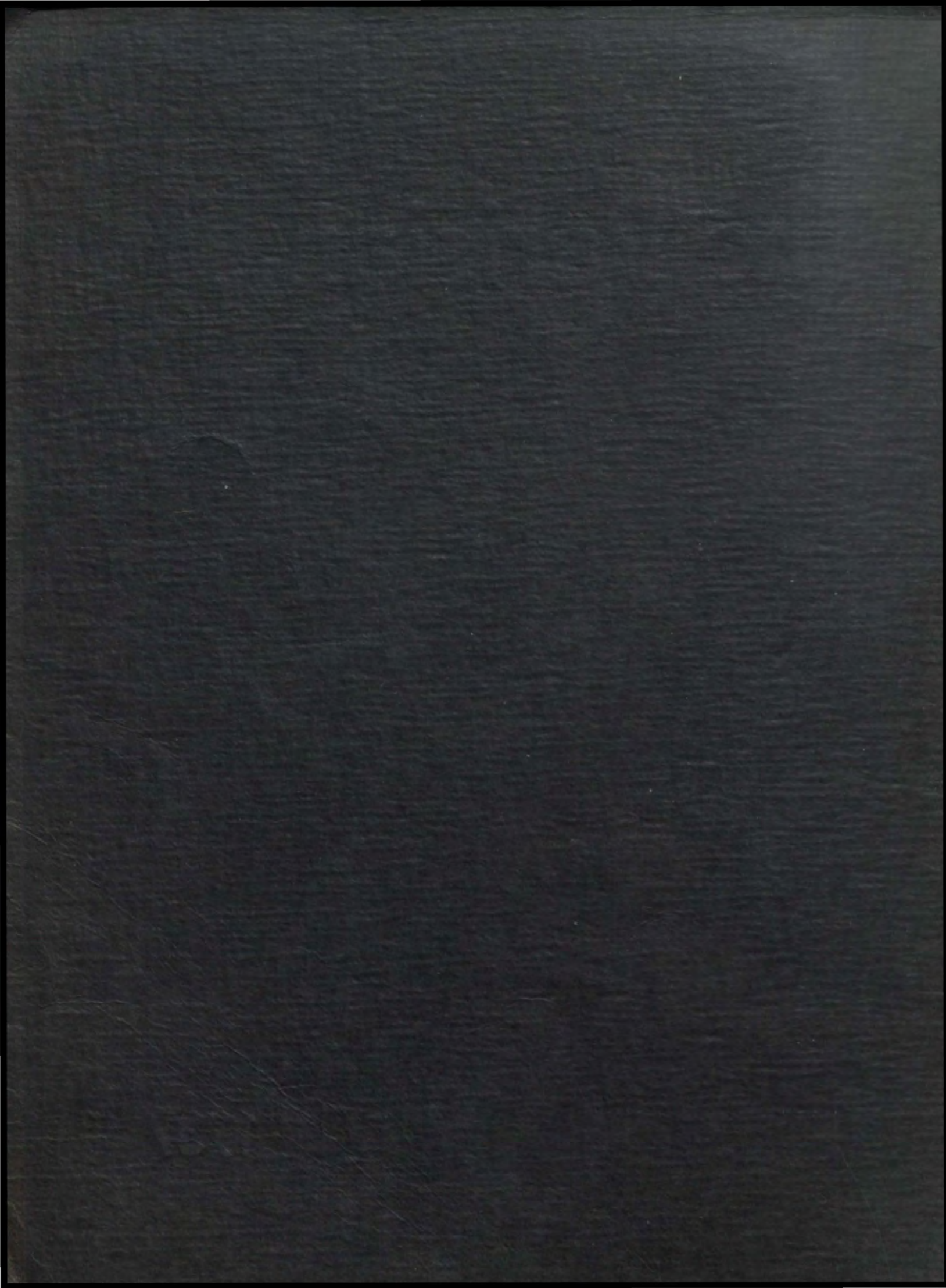


The Parisian

1937



The Parisian

1937

Volume 12



Published By The
Senior Class of Paris High School



MRS. LOUISE COLLIER CLAY

Dedication

We, of the Senior Class of 1937, gratefully and respectfully dedicate this Annual to Mrs. Louise Collier Clay, our school librarian.

As a Senior Class, we are appreciative of her willing service for each of us during our high school days.

CONTENTS:

Section 1	The Campus
Section 2	The Faculty
Section 3	The Classes
Section 4	Organizations
Section 5	Athletics
Section 6	Junior High School
Section 7	Features

THE PARISIAN



Business Managers



Editorial Staff



Class Reporters



Specialty Staff



Collectors



Typists

ANNUAL STAFF

Editors-in-chief -----	{ James Caldwell Marion Dailey		
Assistant Editor -----	Katharine Nichols		
Business Managers -----	{ Hayden Carmichael John Preston		Assistant Business Managers --- { Miller Ashcraft Carl Morgan Ray Shout
Sports Editors -----	{ Douglas McCabe John Ratliff Edward Faries		Features ----- { Bessie Fudold Frank Shy
Senior Reporters -----	{ Charles Thomas Paul Biddle		Junior Reporters ----- { Betty Lindsay Roseberry W. O. Shropshire
Sophomore Reporters -----	{ Betsy Brooks Woodford Mary Ward		
Art Editor -----	Katharine Nichols		
Typists -----	{ Josephine Bowen Edward Fithian	Geneva Ashcraft Thelma Kenney	Helen Johnson Katherine Fryman Martha Lair
Collectors -----	{ Lloyd Holladay Dorothy Lair Elmer McCord	Elsie Mann Charles Carr Albert Pogue	Marian Clark Rose Burke Ann Harding Davis W. J. Barr Nancy Poe
Pictures -----	{ Jane Richard Bobby Cooper		
Treasurer -----	Nell Drake		

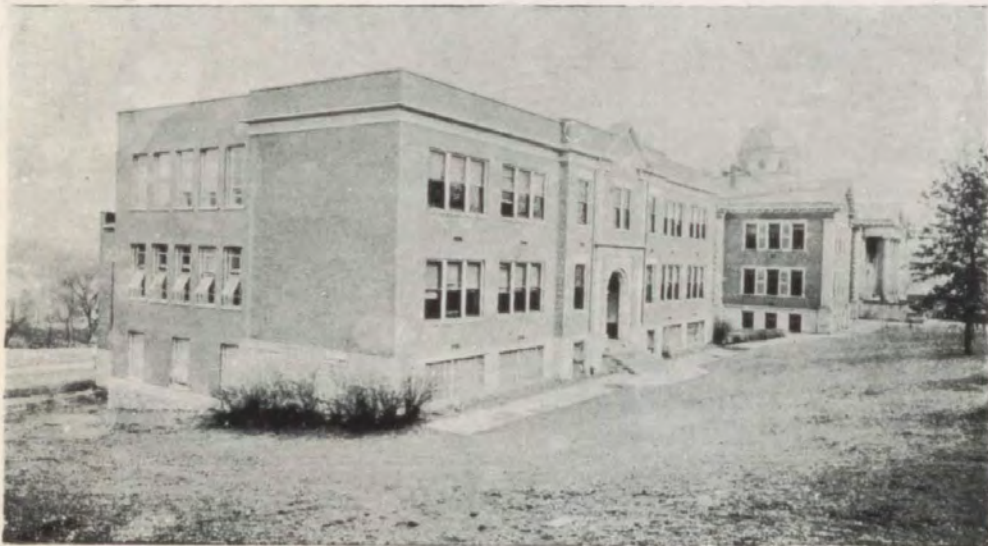


Campus

THE PARISIAN



Main Building



Senior High School Building

THE PARISIAN



The Library



Physics and Chemistry Laboratory

THE PARISIAN



The Cafeteria



The Gymnasium

The Faculty



LEE KIRKPATRICK

Superintendent Paris City Schools

A. B. Georgetown College, A. M. Columbia University
Graduate Student Harvard University

THE PARISIAN



MISS GILBERT LAVIN
 A. B., University of Kentucky
 M. A., Ann Arbor University
 Latin



F. A. SCOTT
 A. B., Southwestern University
 M. A., Columbia University
 Principal—Mathematics



MISS EDITH L. MONSON
 A. B., Georgetown College
 M. A., University of Michigan
 French and Spanish



MISS ZERELDA NOLAND
 A. B., University of Kentucky
 M. A., Columbia University
 English



MISS LULU BATCHELDOR
 A. B., Transylvania College
 M. A., Columbia University
 Graduate Student
 Cambridge University
 Political Science



MRS. W. E. COLLIER
 A. B., University of Kentucky
 M. A., University of Kentucky
 Science

THE PARISIAN



MISS ELLEN BLANDING
University of New York
Music



MRS. NAN K. BEARD
A. B., Bowling Green
College of Commerce
Commerce



MRS. W. FREDERICK GREER
B. S., George Peabody College
Physical Education



MRS. DAN PEED
B. S., University of Kentucky
Home Economics



MR. BLANTON COLLIER
A. B., Georgetown College
Mathematics
Coach Football, Basketball



MR. RICHARD BUTLER
A. B., Washington & Lee University
Mathematics
Assistant Coach Football, Basketball

THE PARISIAN



MISS HELEN HUNTER
A. B., University of Kentucky
A. M., Columbia University
History



MISS MARIAN MITCHELL
A. B., Randolph Macon
Woman's College
A. M., Columbia University
Geography



MRS. HELEN D. HAZELRIGG
A. B., University of Kentucky
A. M. Columbia University
History



MRS. MAUDE BRIGGS
A. B., University of Kentucky
English



MISS CATHERINE CALDWELL
A. B., Western Kentucky
State Teachers' College
Latin, English



MISS AGNES PURNELL
A. B., University of Kentucky
Mathematics



Classes

THE PARISIAN



SENIOR CLASS OFFICERS

President James Caldwell
 Vice President Marian Dailey
 Secretary Carl Morgan
 Treasurer Bessie Fudold

Geneva Ashcraft—Friendly.

Latin Club 1, 2; Science Club 1, 2; Home Ec. Club 1, 4; Glee Club 1, 2, 3, 4; Physical Education Club 1, 2; Commercial Club 3, 4; Girl Reserves 2, 3, 4; Annual Staff.



Robert Cooper—Lochinvar.

Class Play 2, 3; Band 1, 2, 3, 4; Spanish Club 3, 4; Basketball 1, 2, 3, 4; Science Club 4; Garden Club 2; Commercial Club 3, 4; Annual Staff; Track 2.

Joe Endris—Outspoken.

Garden Club 2; Science Club 3, 4; Latin Club 1, 2; Glee Club 2.



Josephine Bowen—Willing.

Latin Club 1, 2; El Circulo Espanol 4; Physical Education Class 1, 2; Home Ec. Club 1, 4; Commercial Club 3, 4; Girl Reserves 2, 3, 4.

Albert Pogue—Puerile.

Glee Club 1, 2, 3, 4; Garden Club 2; Science Club 3, 4; Le Cercle Francais 3; Commercial Club 4; Latin Club 1, 2; Class Play 3.



Frank Shy—Talented.

Football 1, 4; Basketball 1, 4; Band 1, 2, 3, 4; Music Rep. 1, 4; Garden Club (Pres.) 2; Science Club 3, 4; Latin Club 2; Class Sec. 3; Glee Club 4; Annual Staff.

THE PARISIAN

Won
Athletic Cup "1937"
Mathematical Award
Douglas McCabe—Determined.

Basketball 2, 3, 4; Football 2, 3, 4; All C. K. C. 4; Orange and Black Book 1; Vested Choir 3, 4; Glee Club 1, 4; Rotary Scholarship Cup 3; French Club 2, 3, 4 (Treasurer 3); Latin Club 1, 2 (Vice Pres. 1, Pres. 2); Science Club 1, 3, 4; Class Vice President 1; Annual Staff 4; Dis. Representative in Algebra 1, 2; Debating 4; Parisian Circle 2, 3, 4; Honor Roll 1, 2, 3, 4; Class Play 1, 2.

Ann Harding Davis—Sentimental.

Latin Club 1, 2, 3; Garden Club 2; Science Club 4; Parisian Circle 3, 4; Girl Reserves; Class Play 1, 2, 3.

Charles Thomas—Energetic.

Le Cercle Francais 1, 2; Garden Club; Science Club 3, 4; Commercial Club; Class Play 2.

Married Robert Gardner Jan. 1939
Nancy Pee—Industrious.

Garden Club 2; Latin Club 1, 2, 3, 4; El Circulo Espanol 4; Glee Club 4; Commercial Club 3, 4; Home Ec. Club 1; Physical Education Club 1; Girl Reserves 2, 3, 4.

Roy Galloway—Competent.

Bourbon County High School 1, 2, 3; Glee Club 4; Science Club 4.

Decided
Georgetown Cup - 1937"

Katharine Nichols—Dramatic.

Entered from Henry Clay; Class President 2; Class Vice Pres. 1, 3; French Club 2, 3, 4; Spanish Club 3, 4; Pres. 4; Girl Reserves 2, 3, 4; Glee Club 4; Annual Staff; Honor Roll 1, 2, 3, 4; Class Play 1, 2; Vested Choir 4; Debating Teams 3, 4; Pep Club 4; Science Club 3.

Lloyd Halladay—Reliable.

Football 2, 3, 4; basketball 2; Commercial Club 3, 4; Garden Club 2; Science Club 3, 4; Le Cercle Francais 3, 4; Latin Club 1, 2; Annual Staff; Rotary Scholarship Cup 4.

Nell Drake—Demure.

Garden Club 2; Science Club 4; Latin Club 1, 2, 3, 4 (Pres.); Le Cercle Francais 3, 4 (Treas.); Girl Reserves (Co. Pres.); Commercial Club 4; Home Ec. Club 1; Parisian Circle 4; Pep Club 4; Class Play 1, 2; Annual Staff.

John Ratliff—Self-Respecting.

Class play 1, 2; Basketball 2, 3, 4; Glee Club 3, 4; Debating 4; Garden Club 2; Latin Club 1, 2; Commercial Club 3, 4.

Married
Nancy Burris
Frank Parker—Sleek.

Vested Choir 3, 4; Glee Club 1, 2, 3, 4; Science Club 1, 4; Garden Club 2; Spanish Club 3, 4; Latin Club 1, 2; Commercial Club 4; Class Play 1, 2; Annual staff.



*Declassed
Here
1950
Married
Carolyn West*
W. J. Barr—Methodical.

Football 2, 3, 4; Basketball 2, 3, 4; Garden Club 2; Commercial Club 3, 4; El Circulo Espanol 4; Class Play 1, 2; Annual Staff; Track 2; Band 1; Latin Club 1, 2.



Helen Johnson—Calm.

Home Ec. Club 1; Latin Club 1, 2; Garden Club 2; French Club 3; Spanish Club 4; Glee Club 2, 3, 4; Class Play 1, 3; Parisian Circle 2, 3, 4; Pep Club 4; Commercial Club 3, 4; Girl Reserves 2, 3, 4.



Elmer McCord—Maestro.

Basketball 2, 3; Football 2, 3; Band 1, 2, 4; Spanish Club 3, 4; Latin Club 1, 2; Science Club 1, 2, 4; Commercial Club 3; Annual Staff.



married 1938
Kathryn Fryman—Helpful.

Home Ec. Club 1; Latin Club 1, 2; Garden Club 4; French Club 3, 4; Spanish Club 4; Glee Club 2, 3; Commercial Club 3, 4; Girl Reserves 2, 3, 4.



*2nd married
Tom McClintock*
Russell Insko—Placid.

Commercial Club 4; Glee Club 1, 2, 3, 4; Vested Choir 4; Latin Club 1, 2; Garden Club 2; Science Club 3, 4.



Mrs. Benton Rayfield
Elsie Mann—Petit.

Glee Club 4; Commercial Club 3, 4; Le Cercle Francais 3; Garden Club 2; Science Club 4; Physical Education Club 1, 2, 3, 4; Home Ec. Club 1, 4.



Hayden Carmichael—Happy.

Vested Choir 3, 4; Band 1, 2, 3, 4; Science Club 1, 2, 3, 4; Latin Club 1, 2, 4; Pep Club 4; Class Play 2, 3; Glee Club 1, 2, 3, 4; Commercial Club 3; Annual Staff; Music Rep. 3.



*Married
Sam Clay*
Dorothy Lair—Vivacious.

Latin Club 1, 2; Science Club 1; French Club 3; Home Ec. Club 1 (Treasurer 3, President 4); Spanish Club 4; Garden Club 2; Commercial Club 3, 4; Class Play 2; Physical Education Club 1, 2, 3.



James Caldwell—Clever.

Scholarship Contest 1; Football 2, 3, 4 (Mgr.); Track 2; Le Cercle Francais 3, 4; Latin Club 1, 2, 3, 4; Class Play 1, 2, 3; Garden Club 2; Parisian Circle 3, 4; Annual Staff (Co. Editor); Class President 1, 4; Class Treasurer 2, Orange and Black 1, Honor Roll 1, 2, 3, 4; Commercial Club 2; Debating 4; Pep Club 4.



Perry Wassom—Studious.

Latin Club 1, 2; Garden Club 2; Science Club 3, 4; Commercial Club 3, 4.



Peyton Horton—Crafty.

Football 2, 3, 4; Basketball 2, 3, 4 (Captain); Garden Club 2; Science Club 3, 4; Commercial Club 3; El Circulo Espanol 3.



Thelma Kenney—Athletic.

Latin Club 1, 2; Spanish Club 4; Home Ec. Club 1, 4 (Sec. & Treas.); Physical Education Club 1, 2, 3; Girl Reserves 2, 3, 4; Science Club 1; Commercial Club 3, 4; Glee Club 1, 3, 4; Annual Staff; Garden Club.

Rose Burke—Ambitious.

Spanish Club 4; Latin Club 1, 2, 3; Glee Club 1; Commercial Club 3, 4; Home Ec. Club 1; Science Club 1.



Charles Carr—Scientific.

Commercial Club 2, 3, 4; Spanish Club 3, 4; Band 1, 2.

Robert Smith—Agreeable.

Garden Club 2; Science Club 4; Band 1, 2, 3, 4; Glee Club 3, 4; Commercial Club 3, 4; El Circulo Espanol 3.



Bessie Fudold—Joker.

Latin Club 1, 2, 3, 4; Glee Club 2, 3, 4; Vested Choir 3, 4; Commercial Club 3, 4; Garden Club 2; Home Ec. Club 1; Le Cercle Francais 3, 4.

Catherine Morgan—Silent.

Home Ec. Club 1, 3, 4; Garden Club 2; Science Club 4; Girl Reserves 2, 3, 4; Commercial Club 3, 4; Latin Club 1; Physical Education Club 1, 2, 3.



Thomas Tobin—Pensive.

Latin Club 1, 2; Science Club 1, 3, 4; Garden Club 2; Commercial Club 3.

Brice Steele—Pugnacious.

Football 2, 3, 4; Garden Club 2; Science Club 3, 4.



Carl Morgan—Deliberate.

Music Rep. 3; Boys' Glee Club 1, 2, 3, 4; Vested Choir 3, 4; Basketball 2; Commercial Club 3, 4; Garden Club 2; Commercial Club 3, 4; Garden Club 2; Science Club 1, 3; Latin Club 1, 2; Class Officer 1, 3, 4; Annual Staff; Spanish Club 4 (Vice President).

THE PARISIAN

Georgetown Cup 1937

Marion Dailey—Excellent.

Latin Club 1, 2, 3, 4; French Club 2, 3, 4 (Pres. 4); Girl Reserves 2, 3, 4; Home Ec. Club 1; Glee Club 2, 4; Class Vice President 4; Annual Staff; Honor Roll 1, 2, 3, 4; Orange and Black 1, 2, 3; History Award 1; Class Play 1, 3; Vested Choir 4; Science Club 4 (Sec.); French Award 2, 3.



John Preston—Smooth.

Buenos Aires American High School 2; Football 4; Glee Club 3, 4; Vested Choir 3, 4; Class Play 3; Commercial Club 4; Science Club 3, 4; Le Cercle Francais 3, 4; Parisian Circle 4; Annual Staff.

Jane Richard—Effervescent.

Latin Club 1, 2; French Club 3, 4; Girl Reserves 2, 3, 4; Home Ec. Club 1, 4; Annual Staff; Class Play 2, 3; Commercial Club 4; Science Club 1.



Miller Ashcraft—Dependable.

Latin Club 1; Science Club 1, 4; Class Play 1; Basketball 1; Annual Staff; Class President 1; Ruddles Mills 2, 3.

Edward Faries—Cheerful.

Football 2, 3, 4; Latin Club 1; Garden Club 2; Science Club 2, 4; Basketball Manager 4; Annual Staff; Band 1, 2; Class Play 2, 3 (Mgr.).



Martha Lair—Serious.

Le Cercle Francais 3, 4; El Circulo Espanol 4; Glee Club 1, 2, 3; Commercial Club 3, 4 (Pres.); Garden Club 2; Girl Reserves 2, 3, 4 (Co-President); Home Ec. Club 1, 3, 4; Physical Education 1, 2, 3.

Marian Clark—Tardy.

Le Cercle Francais 3, 4 (Sec.); El Circulo Espanol 4; Home Ec. Club 3, 4; Garden Club 2; Latin Club 1, 2, 3; Class Play 2, 3; Glee Club 1, 2, 3; Annual Staff.



Edward Fithian—Swing!!

Commercial Club 3, 4; El Circulo Espanol 4; Garden Club 2.

Ray Shout—Humorous.

Basketball 1, 2, 3; Football 1, 2, 3, 4; Commercial Club 3, 4; Garden Club 3, 4; Science Club 1; Latin Club 1; Annual Staff.



Paul Biddle—Frank.

Glee Club 1, 2, 3, 4; Vested Choir 3, 4; Commercial Club 2, 3; Garden Club 2; Science Club 1, 3, 4; Latin Club 1, 2; Annual Staff; Basketball 2, 3; Class Treasurer 2; Track 2.

THE PARISIAN



JUNIOR CLASS OFFICERS

President	Larry Brannon
Vice President	Juanita Vaughn
Treasurer	Dan Isgrig
Secretary	Virginia Cavanaugh

THE TREK OF THE JUNIORS

- (1) Ah, distinctly I remember; it was in a sad September,
When each became a member of the first grade up at school.
Eagerly we read our reader, speedily we learned to heed Her
When She told us She was leader, and we must obey Her rule.
- (2) Presently our minds grew stronger; hesitating then no longer
We advanced through Grades and High School till we passed out through the door
Clutching tight to us a folder which acclaimed to all the Holder
As a very learned Sophomore to return, Ah, Nevermore!
- (3) Deep into the darkness peering, long we stood there, wondering, fearing,
Doubting, dreaming dreams no Sophomore ever dared to dream before.
And then we started yearning toward the Goal, and by our learning
We are now advanced to Juniors, and we'll be Seniors, one year more,

"THE EYES OF TLALOC"

"The Eyes of Tlaloc", the Junior Class Play of '36, was universally acclaimed the best play ever given at Paris Hl. In this production, the Clark Gable of the Junior Class, Jack Baldwin, reached his heights as Tommy Tinker, who fell in love with the class siren, Ann Wallace Horton, who played the part of Nancy Howe. Nawa, portrayed by that inimitable character-actor, W. O. Shropshire, proceeded to make plenty of trouble for everyone. Much to the delight of the first six grades, Amanda Simpkins (Mary Eldone Nickerson, "Doty", in private life) let forth an earsplitting and blood-curdling scream in the midst of the excitement. Ezra (Arthur Clay Hollis) with his, "Well I'll be derned", also drew much applause from the same audience. And how the kids yelled when Pat Gillis (otherwise Charlene "Lene" Young, the Bell (e) of Paris Hl) twirled her pistol so expertly around her finger. We all wonder how Salvador (Larry Brannon ever got out that long name of his without stuttering. Pudge (Milton Rice) Rogers cut quite a figure sleeping by the fireside, and John Minogue made a lasting impression as the Professor with his height and dark glasses. Catherine "Kaffa" Kennedy held up her end of the cast very convincingly as Virginia Lee Byrd, Nancy's good friend, by "pooh-poohing" at Pat's fear of Tlaloc and then jumping herself. And we ALL jumped when Pepita (Catherine LaFrana) threw that dagger at Tlaloc; Whoooooee !! John Neal as John Wayne made a grand surprise package when at the end he came in and saved the day.

CALENDAR OF MEMORABLE EVENTS

Sept. 8—That much dreaded day when we found part of our dreams answered. We were well on the road to being seniors.

Dec. 18—The weary juniors wended their weary way homeward (?) (Maybe it was Sweet Shop-ward) after much discussion and disturbance over the loss (?) of Bus Bell's explanation on his Christmas present.

March 2—Much unrealized, musical talent was discovered through the efforts of Miss Topham, substituting in the deeply regretted absence of Miss Monson, our favorite Spanish and French teacher. Woe be unto Miss Lavin who resides in the flat above us.

March 12—Mabel Clotfelter and Edward Burke returned to their respective home rooms after a long tiresome trip to library. The road was in bad condition so it was necessary for them to detour around by Mr. Kirkpatrick's office.

March 17—Speaking contest - congratulations to Juniors, Jane Clay Sutherland and Catharine Kennedy, John Minogue, Anne Wallace Horton, and Larry Brannon.

March 22—Debating Tournament—Catherine Kennedy upheld the affirmative. Jane Clay, substitute speaker, listened in.

THE PARISIAN



JUNIOR CLASS

Jack Baldwin
 Dan Barr
 Frances Beard
 John Bell
 Harold Bell
 Larry Brannon
 Edward Burke
 Charles Butler
 Virginia Cavanaugh
 Mary Ellis Chappell
 Mabel Clotfelter
 Leila DeJarnett
 Charles Didier
 George Dodson
 J. W. Duvall
 Frances Gifford
 Randolph Gilliam
 Woodrow Glover
 Harriel Gudgell
 Madeline Guyard

Ernest Ham
 Will Jean Harney
 Robert Hazelrigg
 Arthur Clay Hollis
 Ann Wallace Horton
 Jane White Humble
 Myrtle Hymes
 Elwood Insko
 Dan Isgrig
 Eugene Johnson
 Joe Kelley
 Catherine Kennedy
 Thomas King
 Catherine La Frana
 Georgia Letcher
 Jo Mastin
 Lillian McCord
 John Minogue
 Eloise Moore

John Neal
 Mary Eldone Nickerson
 Annie Payne
 James Plummer
 Rachel Plummer
 Billie Rankin
 Milton Rice
 Betty Lindsay Roseberry
 Lillian Sargent
 Martha Scott
 Woodrow Scott
 W. O. Shropshire
 Lena Short
 Nancy Snapp
 Jane Clay Sutherland
 Sarah Frances Swinford
 Lloyd Tune
 Juanita Vaughn
 Mary Elizabeth Weber
 Charlene Young



SOPHOMORE CLASS OFFICERS

President	Betsy Brooks Woodford
Vice President	Marcus Harlan
Treasurer	Martha Thomas
Secretary	Carey Adair

The Sophomore Class is a class where

- 1—Miss Noland has offered to give everyone a pillow.
- 2—X teacher is very interested in slam books.
- 3—Norma Mae likes coon coats.
- 4—A certain blond likes Cadets.
- 5—Ignorance likes the 12:15 Spanish Class.
- 6—Ccrnfed likes Goofs.
- 7—Betty Mae likes Walker Avenue.
- 8—Tootie puts her knife and fork in her lap and her napkin in her plate.
- 9—Hinkle looks up Algebra answers in a Latin vocabulary list.

But don't get us wrong, we like the Sophomore Class.

THE SOPHOMORE CLASS HISTORY

On a very hot day in early September seventy Sophomores climbed with reluctance the steps of Senior High to begin another school year.

After the newness had worn off they entered whole heartedly into the activities of School Life. They contributed \$46.00 to the football fund and forty-seven members bought season basketball tickets.

They were well represented in both football and basketball. Two members of the class made up the negative debating team which had a very successful season. Five choir members and many Glee Club members go to Miss Blanding twice a week respectively.

The Sophomores are going to try to make the next two years as successful as this one has been.

THE PARISIAN

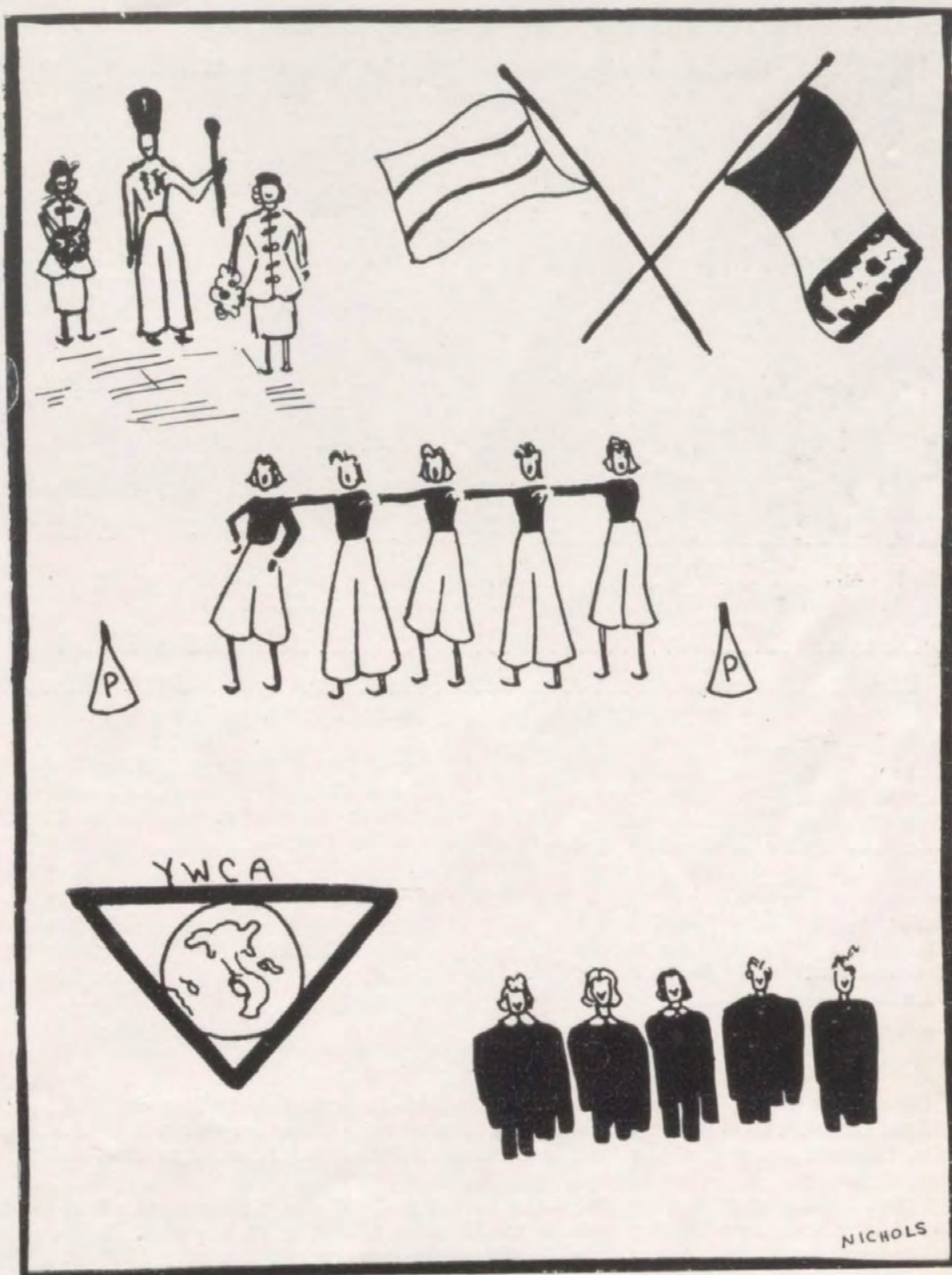


SOPHOMORE CLASS

Carey Adair
 Russell Alexander
 Margaret Arnsparger
 Hazel Ashcraft
 Louise Barlow
 Josephine Biddle
 Maurice Biddle
 J. T. Bowles
 Elizabeth Bramel
 John Butler
 Geneva Carmichael
 Lee Cavanaugh
 Elizabeth G. Chapman
 Dorothy Clark
 Dorothy Clough
 A. B. Collins
 Nancy Williams
 Alice Connell
 Charles Dalby
 Betty Mae Dalzell
 Charles Day
 Marjorie Deering
 Mary F. Dodson
 Violet Elkins

Keller Ewalt
 Clarence Frye
 Frank Gilliam
 William Grimes
 Leonard Grinnell
 Adrian Gross
 Marcus Harlan
 Nancy Hinkle
 Geneva Humphries
 Anna Marie Jones
 Myrtle Jones
 Leona Kenney
 Lucy Woodford Kenney
 John Lee Kirkpatrick
 Thomas Letton
 Donald Lykins
 John Mallany
 Billy Mann
 Norma Mae Mastin
 Mary Anna Maupin
 Vivian McCabe
 Mary E. McClanahan
 Dorothy McCracken
 Betty McMillan
 Betsy Brooks Woodford

Mary K. McMillan
 Douglas Moore
 Katherine Moore
 J. P. Morgan
 Bobby Myers
 Hazel Parker
 Stanley Richard
 Constance Sparks
 Billy Shire
 Georgia Singleton
 Chester Skillman
 Frank G. Skillman
 Betty Smith
 James Smith
 Katherine Smith
 Jessie Jane Spears
 Edward Sutherland
 Cecil Tankersley
 Martha Thomas
 James Tobin
 Mary Louise Turpin
 Mary Ward
 Willmard Watson
 Jack Wood



Organizations



PARIS HIGH SCHOOL CHAPEL CHOIR

DirectorMiss Ellen Blanding

Pianist John Gilkey

SOPRANO

Jane White Humble	Marian Dailey
Catherine La Frana	Anne Payne
Mary Ellis Chappell	Lucy Kenney
Mary Elizabeth Weber	Charlene Young

ALTO

Jane Clay Sutherland	Mary Anna Maupin
Bessie Fudold	Katharine Nichols
Virginia Cavanaugh	Rachel Plummer
Juanita Vaughn	

TENOR

Paul Biddle	Russell Insko
John Preston	Gene Harney
Hayden Carmichael	James Smith
Elwood Insko	

BASS

Arthur Hollis	J. T. Bowles
Douglas Moore	Billy Mann
Douglas McCabe	Larry Brannon
Frank Parker	Carl Morgan
Albert Pegue	

CHAPEL CHOIR

The Paris High School Chapel Choir was organized November 1, 1935 under the supervision of Miss Ellen Blanding and Miss Susan Howard. Robes were ordered for use in the first public appearance, which was at a dinner meeting of the Blue Grass School Executives' Association at the Lafayette Hotel in Lexington, Kentucky.

Subsequent appearances of the choir have been the Christmas programs, at which time the Cantata, "Childe Jesus", was sung for the students and later it was sung at the Presbyterian church. Following this the next appearance was at the Baccalaureate services in Paris.

During the current school year the choir has sung Christmas programs for the school and the Rotary Club, and it has sung at the Veterans' Hospital, Lexington. It has also been honored by receiving an invitation to sing on the first "Young Artist" program which the University of Kentucky sponsored at the Memorial Hall on the University campus February 7, and before the McDowell Music Club, Lexington, March 15.

The thirty choir members will sing in the first choir event which is to be featured in the Kentucky High School Music Festival, held in Lexington April 30.



PARIS HIGH SCHOOL BAND

I CLARINETS

Robert Myers
Larry Brannon
Frank Shy
Norma Mae Mastin
Alfred Shire
Betty M. Dazell
Robert Insko
Donald Lykins
Anne Howe Hutchcraft
Helen Gibson Hutchcraft
Robert Manning
Robert Blankship
Edward Sutherland

VII BASS HORN

Joe Kelley

II TRUMPET

Nancy Williams
Billy Shire
Randolph Gilliam
Stanley Richard
Robert Smith
John Lee Roberts
Edwin Burris
Mary V. Gibson
Dawes McCracken, Jr.
Calvin Smart
Billy Harris
William Phillips
Ray Lytle
Eddie B. Williams
Raymond Cohen

VIII CYMBAL

J. T. Bowles

DIRECTOR

Cleary Fightmaster, Jr.

SPONSORS

Jane Richard
Elsie Mann

DRUM MAJOR

Paul Kenton

III SAXOPHONE

Elmer McCord, Jr.
Fred Poplin
Lloyd Tune
Billy Grimes
Billy Dale

IV ALTO

Robert Cooper
Leonard Cohen

V BARITONE

Frank S. Dalzell
Jessie Crump

VI DRUMS

James Smith
Elwood Insko
Hayden Carmichael
Rhodes Skillman
George Dodson

FLAG BEARERS

J. P. Morgan
Miller Ashcraft

THE PARISIAN



GIRL RESERVES

OFFICERS

Co-Presidents	{Martha Lair Nell Drake
Vice President	Virginia Cavanaugh
Secretary	Marion Dailey
Treasurer	Marian Clark

The Girl Reserve Organization of the Paris High School consists of approximately ninety girls from the Sophomore, Junior and Senior classes. This organization helps to bring out the finest characteristics in every girl. This club teaches every girl to set her standards of living high, and seek to reach this goal.

This club provides various activities for its members, such as picnics, tea dances, and Christmas parties.

The Girl Reserve initiation ceremony is the most impressive ceremony conducted in the Paris Senior High School.

The success of our organization is due to the interest and untiring efforts of our sponsor, Miss Lulu Batcheldor.



HOME ECONOMICS CLUB

OFFICERS

President Dorothy Lair
Vice President Mary Elizabeth Mann
Secretary and Treasurer Thelma Kenney

The Home Economics Club is composed of the members of the Home Economics classes of the Junior and Senior High Schools.

The aim of the Home Economics Club is to form a closer contact between the Home Economics Department and the rest of the school; the home life of the girls, and the community.

Regular meetings of the club are held with an effort to carry out the aims and purposes of the organization.

COMMERCIAL DEPARTMENT

The Commercial Department is one of the foremost organizations of the Paris Senior High School. Many improvements have been made in this department, and more and more the students are taking advantage of the commercial work offered. The Commercial Department turns out capable and efficient stenographers.

In connection with this department, there is a Commercial Club, the officers of which are:

President Martha Lair
Vice President Frances Beard
Secretary and Treasurer John Bell

A black and white group photograph of the 1934-35 Junior Class. There are 24 students in total, arranged in three rows. The front row consists of 10 girls standing on a low wall. The middle row has 8 students, and the back row has 6 students. The students are dressed in formal attire typical of the mid-1930s.

SCIENCE CLUB

FRENCH CLUB

JUNIOR-SENIOR LATIN CLUB

HOME ECONOMICS CLUB

GARDEN CLUB

COMMERCIAL CLUB

SPANISH CLUB

GIRL RESERVES

SOPHOMORE LATIN CLUB

Page Twenty-eight

THE PARISIAN

LATIN CLUBS

The Junior-Senior Latin Club and the Sophomore Latin Club count as their members those students of Latin who maintain an acceptable scholarship record.

The Junior-Senior Club has long had as its motto, "Esse quam videri"—to be rather than to seem—and to this ideal the members are asked to look.

Programs for meetings of the Latin Club are furnished by the students from material, developed either in class or through related readings.

The Sophomore Club members choose a name of a Roman god, goddess or hero by which they are known in the club and of whose achievements they may tell the club.

Festival days of the Roman, which have a modern counterpart, are frequently chosen for meeting days of the club. An attempt is made to familiarize the students with Roman clothing, customs, and outstanding features of their daily life.

FRENCH CLUB

(Le Cercle Français)

OFFICERS

Sponsor	Miss Edith Monson
President	Marion Dailey
Vice President	Milton Rice
Secretary	Marian Clark
Treasurer	Nell Drake

The French Club this year consists of about thirty-seven members from the Sophomore, Junior, and Senior classes. The French year is begun usually by an initiation of the new members. Prizes are awarded to the most ludicrously dressed person and the person who dressed him.

The French Club gives to the students a wider view of the French customs and government and a knowledge of their language. A greater interest is created by playing French games, singing songs, and observing holidays in some way.

EL CIRCULO ESPANOL

OFFICERS

President	Katharine Nichols
Vice-President	Carl Morgan
Secretary	Elmer McCord
Treasurer	Katherine La Frana

The Spanish club has thirty-nine members. This club always observes the Spanish holidays by giving some type of entertainment and by getting better acquainted with their Spanish friends. The Christmas celebration was especially typical of Spanish life. "Un Villancico" was beautifully sung by Katherine La Frana, who was accompanied by Mabel Clotfelter at the piano. Spanish songs, playlets and puzzles make up the greater part of the regular programs. At the close of these very interesting meetings, refreshments are served by Miss Monson.

THE PARISIAN

THE GIRLS' GLEE CLUB

The Girls' Glee Club is composed of Senior High School Girls. It is under the direction of Miss Ellen Blanding assisted by Mr. John Gilkey. The girls are interested and take an active part in all the musical activities of the school.

The School is always well represented by the Girls' Glee Club in the State Musical Contest in Lexington. In recent years they have won many honors for the school.

THE BOYS' GLEE CLUB

The Boys' Glee Club has been an organization of great accomplishment in the Paris High School for a good many years. It has been under the very able supervision of Miss Ellen Blanding, General Supervisor of Music in the entire City Schools. With the aid of Miss Blanding the organization has brought many an honor to Paris High School by making outstanding recognitions at the State Inter-scholastic Music Contests which are held annually in Lexington, Kentucky.

The Boys' Glee Club offers an opportunity to every musically inclined boy in the school to make himself known. The organization, itself, has been one in which many an outstanding musician has been found—young musicians. Recent graduates have proved this to be true.

The record of the Boys' Glee Club in State Contests has been very outstanding. Many years before it has made exceptionally good ratings, and only last year they were awarded the honor of the "Superior" Glee Club. May such high records continue to be made by this excellent organization in the years to come.

PHYSICAL EDUCATION CLUB

OFFICERS

President	Betty Mae Dalzell
Vice President	Elizabeth Grimes Chapman
Secretary and Treasurer	Elizabeth Bramel

The Physical Education Club of the Paris High School is one of the most interesting and active clubs in the entire school. It is composed only of Senior High girls and it is divided into two teams, the Orange team and the Black team. The members chose Norma Mae Mastin to act as the captain of the Orange team and Betty McMillan to act as the captain of the Black team. The members work under a point system to surpass each other. The points and the rewards are as follows:

250 points	emblem
500 points	letter
750 points	pin

The two teams compete in basketball, soccer, hand ball, and volley ball. The Physical Education Club has taken part in many activities of the school, such as: plays, festivals, and exhibitions.

The Physical Education Club has been under the supervision of Mrs. Frederick Greer for the past three years and she has won a place in the hearts of the entire school body.

The Seniors that have received letters, emblems, or pins are: Elsie Mann, Helen Johnson, Dorothy Lair, Jane Richard, and Thelma Kenney.



PARIS DEBATE CLUB

Resolved: that all electric utilities be governmentally owned and operated.

MISS NOLAND—Sponsor

AFFIRMATIVE

Katharine Nichols
Catharine Kennedy
Jane Clay Sutherland

NEGATIVE

Elizabeth Chapman
Norma Mae Mastin
Billy Shire
Jim Caldwell
Katharine Nichols

SEASON'S RECORD

Frenchburg	aff.	won	Mt. Sterling	neg.	lost
Henry Clay	neg.	won	Sulphur	aff.	lost
Henry Clay	aff.	won	Bryan Station	neg.	won
Richmond	neg.	lost	University High	neg.	won
Winchester	aff.	lost	Fort Thomas	neg.	no decision
Danville	neg.	won	Covington	neg.	won
Danville	aff.	no decision	Covington	aff.	won
Winchester	neg.	lost	N. Middletown	neg.	no decision
University High	aff.	won	Henry Clay	aff.	won
Paintsville	aff.	won	University High	neg.	lost
Paintsville	neg.	lost			

THE PARISIAN



PARISIAN CIRCLE AND PEP CLUB

President John Preston
Vice President Nell Drake
Secretary Ann Harding Davis

MEMBERS

Helen Johnson
Douglas McCabe
Ann Harding Davis
James Caldwell

Nell Drake
John Preston
Jane Clay Sutherland
Dorothy Lair

Norma Mae Mastin
Katharine Nichols
Larry Brannon
Hayden Carmichael

The Pep Club of Paris High School, which is made up of the members of both the Pep Club and the Parisian Circle, is one of the most active clubs in high school.

In the way of activities, the Pep Club has this year entertained the Harrodsburg team in the cafeteria, after the basket ball game in the Paris High gymnasium. The Parisian Circle also distributed basket ball schedule programs throughout town and entertained guests from surrounding towns after the Shakespearean plays, which were held in the auditorium last fall.

The Pep Club and Parisian Circle is made up of high school students who are always ready and willing to render service to their school in any way they can, and to uphold the colors of Orange and Black. The motive of this club is to make all guests to our school, either at the basket ball games or any other activity, feel very welcome.

THE PARISIAN

SONGS AND YELLS OF PARIS HIGH SCHOOL

MY GIRL'S FROM OLD K-Y

My girl's from old K-Y,
She goes to Paris High.
She is a Queen o' mine,
I'm telling you.
And in my future life
She's going to be my wife!
How in the world did you find that out?
She told me so!

She goes to all the games;
I furnish all the change.
She and the other dames.
They all go, too.
And in my future life
She's going to be my wife!
How in the world did you find that out?
She told me so!

When she grows older,
She will grow bolder,
And I will hold her
Close to my shoulder.
And in my future life
She's going to be my wife!
How in the world did you find that out?
She told me so!

EAT 'EM UP

Eat 'em up, old team, eat 'em up,
Eat 'em up, old team, eat 'em up,
Eat 'em up, old team, eat 'em up,
Eat 'em up, old team, eat 'em up,

Make a goal, old team, make a goal,
Make a goal, old team, make a goal,
Make a goal, old team, make a goal,
Make a goal, old team, make a goal,

Throw 'em hard, old team, throw 'em hard
Fight 'em hard, old team, fight 'em hard,
Let's go, old team, let's go,
Pile the score, old team, pile the score.
We'll win this game, you bet.

TUNE: JINGLE BELLS

Oh, whoop her up, whoop her up,
And whoop her up some more.
Paris Hi has a team
That we all adore.
She's a peach, she won our hearts,
She surely plays the game.
She's not rough, and she's not tough,
But she gets there just the same.

TUNE: WASHINGTON AND LEE SWING

Oh, when you try to beat old P. H. S.
You're going to have a hard time, well I guess.
We're going to yell, yell, yell, yell a boom—
For Paris High School team we'll yell, we'll
yell, we'll yell.
We're going to fight, fight, fight for every goal,
What we'll do to that team ain't half told.
We'll knock the pep out of them, well I guess,
Yes! Yes! Yes!—Rah! Rah! Rah!

PARIS SPIRIT'S NEVER DEAD

Paris Spirit's never dead,
Dat ball's gwine rise again.
Hit 'em in the eye,
Knock 'em in the head.
Dat ball's gwine rise again,
I know it, indeed I know it, people
I know it! Whee!
Dat ball's gwine rise again.

RAH! RAH!

Rah! rah! for Greyhounds,
Just fight right on, fight right on
Greyhounds!
You can't be wrong, can't be wrong
We'll back you to the end then yell right on
Rah, rah for Greyhounds!
We're with you yet, with you yet
Greyhounds!
On you we'll bet, you we'll bet
All that we want is a team that will fight
Just fight! fight! fight!

OUR TEAM WILL SHINE

TUNE: OUR BOYS WILL SHINE

Our team will shine tonight
Our team will shine.
Our team will shine tonight,
Won't that be fine?
Our team will shine tonight,
Our team will shine.
Our score goes up,
Their score stays down.
Our team will shine.

THE PARISIAN

SONGS AND YELLS OF PARIS HIGH SCHOOL

WE'RE LOYAL TO YOU

TUNE: WE'RE LOYAL TO YOU, ILLINOIS

We're loyal to you, Paris Hi!
To your colors we're true, Paris Hi!
We know you will score,
Make our rival team sore.
Win a victory once more
Paris Hi! Rah! Rah! Rah!
Run for that ball, Paris Hi!
Throw for the goal, Paris Hi!
Our team is our fame protector.
On team, for we expect a
Basket from you, Paris Hi!
We'll fight for our name and our fame,
When the Paris team goes through,
When we hammer the line,
We'll go through every time.
Ever loyal, eager, and true.
For Paris we'll fight to the end,
And we'll win for Paris, too,
For the players will score,
And the rooters will roar
When the Paris team goes through

HAIL TO OLD PARIS

Hail to Old Paris!
Paris will win.
Fight to the finish,
Never give in.
You do your best, boys
We'll do the rest, boys
On to Vic-to-ry.
Rah! Rah! Rah!
(Repeat)

Paris Hi! Paris Hi!
We're the best in old K-Y.
Pick 'em clean before they die.
Paris Hi! Paris Hi!
Beat 'em,
Eat 'em,
Soak 'em,
Pick 'em,
Paris Hi!

Here's to Paris Greyhounds
Nothing they lack
Dressed in those colors
Of old Orange and Black.
Here's to ———
Well can we see
Leading his team
Right on to victory.

HO-DE-HO!

We're the hottest team on the hemisphere
We're known as the Greyhounds who have no fear
Ho-de-ho-de-ho, hi-de-hi-de-hi
We may not win but we'll try, try, try.
We wear the colors of orange and black
We've got everything, there's nothing we lack
Hi-de-hi-de-hi, ho-de-ho-de-ho
We're the Greyhounds watch us go.
Hie!

Fight team fight!
Fight team fight!
Fight, fight, fight, fight, fight!
Fight team fight!
Fight, fight, fight!

G-r-r-r reyhounds!
G-r-r-r reyhounds!
G-r-r-r reyhounds!
Fight! fight! fight!

1-2-2-4
3-2-1-4
Who for?
What for?
Who're going to yell for?
P-A-R-I-S
That's the way you spell it
Here's the way you yell it
Paris, Paris, Paris!

Yea Orange! Yea Black!
Yea Greyhounds! Let's fight!
Oh when you try to beat old P. H. S.
You're gonna have a hard time
Well I guess
We're gonna yell, yell, yell, yell like -boom!
For Paris High School team we'll yell, we'll yell,
we'll yell
We're gonna fight! fight! fight! for every goal
What we'll do to that team aint half told
We'll knock the pep out of them
Well I guess
Yes, yes, yes-rah! rah! rah!
On to victory.



Athletics

THE PARISIAN



FOOTBALL SQUAD

Left to right, front row: Steele, J. Bell, Butler, McCabe, Holladay, H. Bell, Didier, Horton, Duvall, Preston.

Middle row: Assistant Coach Butler, D. Barr, Mallany, Adair, Faries, Harlan, Richard, Shropshire, Shout, W. J. Barr, Coach Collier.

Top row: Shy, Woods, Gudgell, Vaughn, Neal, Manager Caldwell.

ENDS

McCabe	(27)
Holladay	(29)
Adair	(32)
Gudgell	(49)

GUARDS

Shout	(36)
Steele	(34)
Shropshire	(23)
Neal	

BACKS

Horton	(22)
Duvall	(26)
W. J. Barr	(35)
Didier	(38)
Butler	(25)
Harlan	(28)
Kirkpatrick	(35)
Woods	
Richard	(49)

CENTERS

H. Bell	(37)
Faries	(24)
Shy	

TACKLES

Preston	(42)
J. Bell	(33)
D. Barr	(43)
Mallany	(39)
Vaughn	(32)

THE PARISIAN

SCHEDULE

Paris	6	Shelbyville	25
Paris	39	Cynthiana	13
Paris	32	Georgetown	6
Paris	0	Mt. Sterling	7
Paris	62	Winchester	0
Paris	14	Richmond	7
Paris	34	Frankfort	7

SUMMARY OF SEASON

The fighting Greyhounds seem to have a dark period at the beginning of every football season. On the twenty-fifth of September, a team of eleven hounds fought the Shelbyville team in the opening game of the season. This game they lost, but the next week the Greyhounds rose to their full height and struck. The victim was Cynthiana. They saw what cooperation and team work they had when they worked. This discovery was in the same way applied to Georgetown, on the rainy Friday, October 9. The next two weeks were spent in practice for the Mt. Sterling game. This game gave the Greyhounds their nickname "Fighting." They were defeated but Mt. Sterling knew that they played a game that day. The next Friday, October 10, brought Winchester's defeat and Duvy's and Charlie Butler's touchdowns. They ran at ease to pile up a score of 62-0.

That fight the Greyhounds are famous for proved valuable against Richmond, November 6th. A defeated Paris team came from behind to win with Holladay catching the pass that made the score 14-7 in favor of Paris. The 13th of November might have been superstitious to some teams, but not to the Greyhounds. They defeated Frankfort on Frankfort's home field with ten of the boys appearing in Orange and Black uniforms for their last time for old Paris High.

COACH COLLIER

We have a man who makes the teams
Which, while the rooters roar and scream
Are fighting for the orange and black
And never do they seem to crack
Why? COACH COLLIER.

He never tries to let us down
He gives us fate to go around
Without the slightest down-cast frown
He takes a loss without a sound
Who? COACH COLLIER

As all great men must have some aid
Dick Butler to this job was made
Assistant-coach of the Orange and Black
We owe him thanks for his noble act
Of helping OUR COACH COLLIER.



BASKETBALL SQUAD

FORWARDS	NO.	CENTERS	NO.	GUARDS	NO.
Horton	23	J. Bell	31	Ratliff	34
H. Bell	25	Adair	27	Duvall	24
W. J. Barr	22			Cavanaugh	33
Harlan	28			Butler	26
McCabe	21			Woods	32
Meyers	29			Kirkpatrick	36
Cooper	37				
Smith	35				

THE PARISIAN

BASKETBALL

The Paris High School Greyhounds started the season out this time with a hard task before them. This task was to live up to the record set by last year's Greyhounds. Although they did not go as far as the previous team they set a good record. They had one of the hardest schedules ever faced by a Greyhound team, but they lived up to the reputation of Paris High School.

This year the Greyhounds started the season off with a boom. They won all of their games until they struck the big team from Male High. The Greyhounds played a hard game and they went down fighting. After this game they romped on to victory until they met up with the Shelbyville Red Devils. They had a hard and long battle but were defeated. This was the only conference game they lost this year.

The team of this year set a high record for the rest of the schools in Central Kentucky to shoot at. They finished on top in the Central Kentucky Conference for the fifth time in eleven years. In the last two years the Greyhounds have played 54 games; winning 49 and losing only five.

The great success of the Greyhounds in the last eleven years has been due to Coach Blanton Collier. He is a graduate of Georgetown College. He never lets us down and he is always willing. He is considered the best High School basketball coach in Kentucky.

SCHEDULE

Paris	25	Gleneyrie	6	Paris	22	Georgetown	12
Paris	34	Berry	20	Paris	18	Winchester	11
Paris	36	Cynthiana	25	Paris	24	Lexington	15
Paris	24	Louisville Male	27	Paris	29	Richmond	26
Paris	25	Berry	20	Paris	21	Mt. Sterling	18
Paris	30	Ft. Thomas	17	Paris	21	Richmond	16
Paris	21	Covington	18	Paris	22	Lexington	10
Paris	16	Shelbyville	25	Paris	21	Georgetown	16
Paris	30	Frankfort	14	Paris	25	Harrodsburg	22
Paris	20	Winchester	13	Paris	24	Cynthiana	23
Paris	23	Harrodsburg	21				

DISTRICT TOURNAMENT

Paris	17	North Middletown	13
Paris	13	Carlisle	15

THE PARISIAN



Peytie Horton was the captain of our basketball team this year and one of the best little forwards in the state. He made Honorable Mention on the All-CKC team this year. He has led us to victory many times this season and he will be a big loss to the team.

W. J. Barr is one of the coolest basketball players that has been seen in Paris for a long time. He has brought the team through many a tight place. It will be hard to find some one to take his place on the Greyhound team of next year.



Duvy is a boy who never lets down no matter how tough the going gets. He made Honorable Mention on the All-CKC team this year and was a great help to the team.

Receiving honors which were due him, John Ratliff was one of the best guards in Central Kentucky. He was chosen captain of the First Team All CKC, and at that position he was not surpassed. He was a ball-hawk and a swell defensive man.



Although John Bell has not been out for basketball but one year, he had a fine season and was a swell sport. He has held many a good man to a very low score this year. He will also be a great help to the Greyhounds next season.



THE PARISIAN



Although Harold Bell is just a junior in school and will get to play next year he was a big help to the Greyhounds this season. He started several games and played regular while Barr was out. He is a fine rebounder and will help to lead the team to victory in the season of 37-38.



Charlie Butler is about the smallest boy on the ball club but he is also the fastest boy on the squad. He is just a junior this year and has another chance to give the fans a thrill. He will be one of the main players next season.

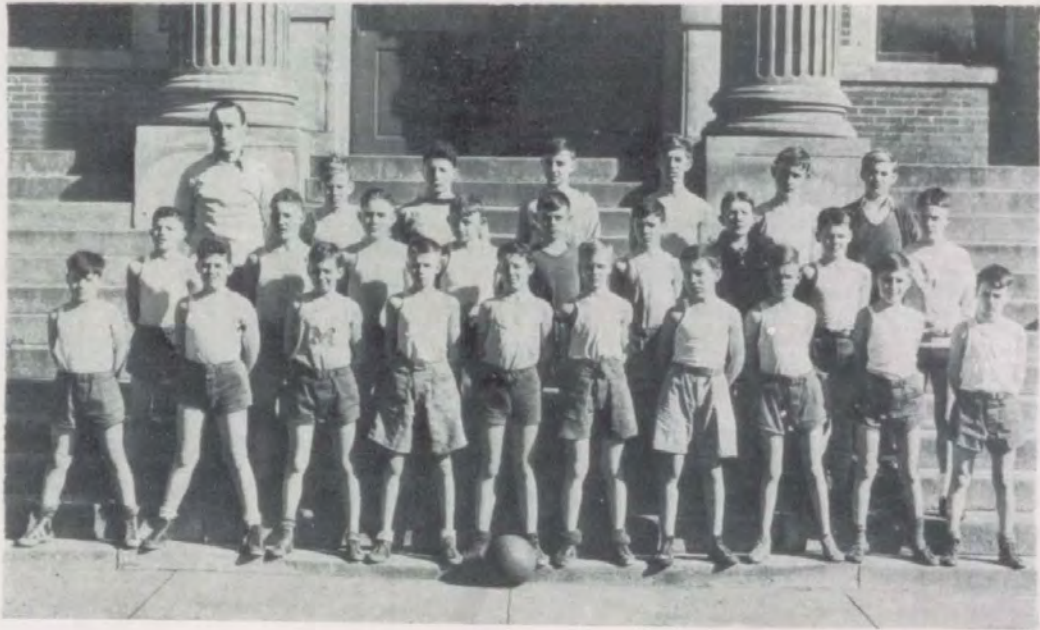


Douglas McCabe is a senior this year and everybody hates to see him go. Although he did not make the team as a regular on account of a bad knee he helped to make the team what it was. He worked hard and had one of the best spirits of the club. We wish him plenty of success.

Marcus Harlan is also a small boy but he is plenty clever. He has been the spark many a time this year to the boys. When they were behind he fought right on, never letting up. He has two more years to play and we are expecting great things out of him in the future.

While Lee Cavanaugh did not play much this year he helped to make the team what it was with his loyal spirit and fight. He made all of the boys work when he was playing with them and in this way was a big help. He has two more years to play and should make a good record.

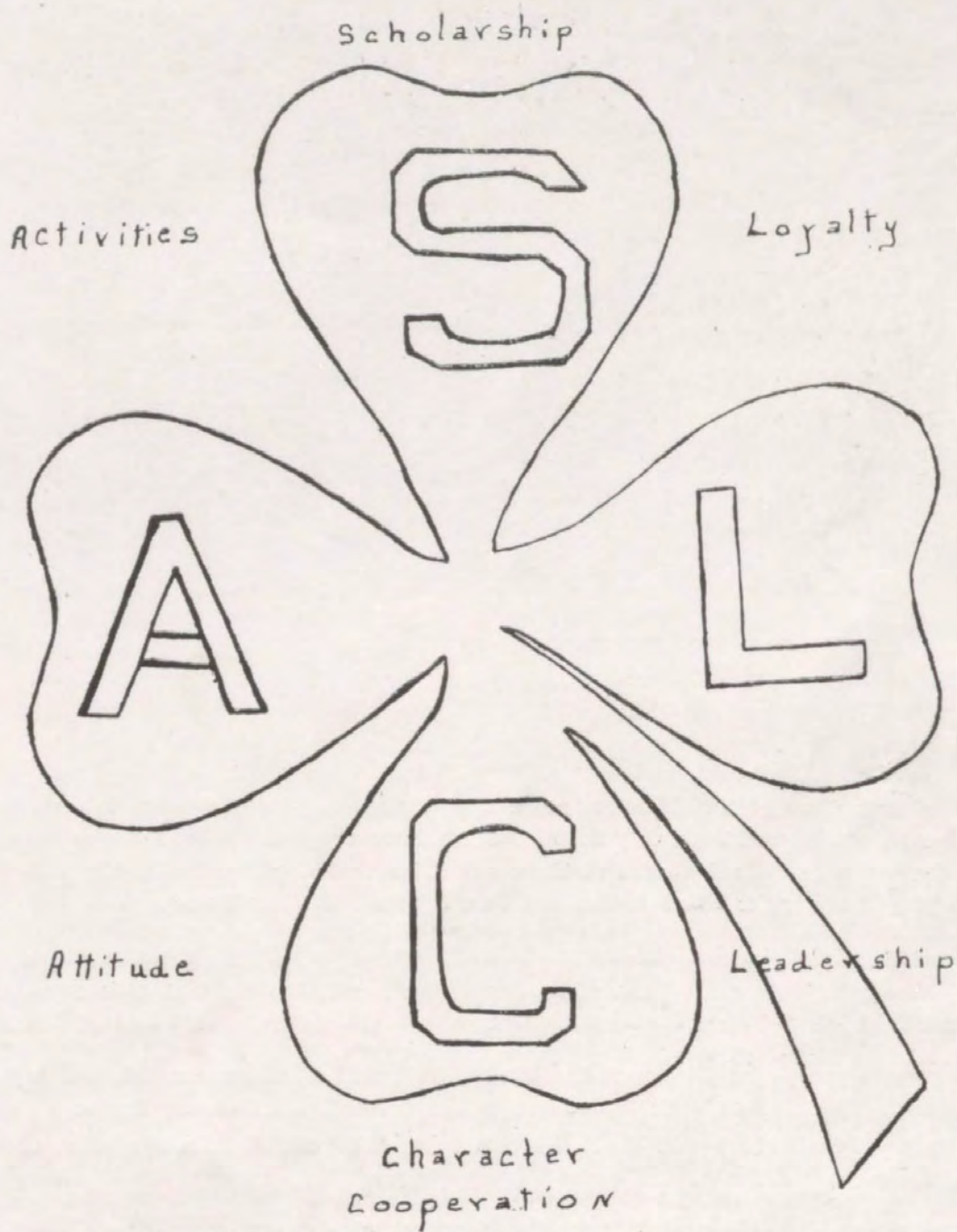




THE X-RAY'S (Junior Hi Midgets)



DIDIER'S MIDGETS (Fifth and Sixth Grade Squad)



Our Ideals
Paris Junior High School



FRESHMAN CLASS OFFICERS

President	George Sidney Tate
Vice President	Mary Nichols
Treasurer	Billy Young
Secretary	Hazel Lyons

The Freshman Class of 1936-37 is composed of 75 members. This class came into existence in 1928 when its first members entered Paris City Schools. Some have dropped out and others have been welcomed from time to time. The President of the Class today is George S. Tate, the Vice President is Mary Nichols, the Secretary is Hazel Lyons, and the Treasurer is Billy Young.

The Freshman Class football and basketball pledges were very large. The first five of the basketball team of Junior High were Freshman. The Junior High School held many enthusiastic rallies during the season. The cheer leaders elected for the Freshman Class were Adele Hazelrigg and Billy Young.

Several boys in this class are participating in the Public Speaking Contest, and many girls are entering the Poetry Reading Contest. There are active Scout Leaders among the boys and the girls.

Jean Royse, Alfred Shire, and C. R. Parrent represented our class in the band, and the Drum Major, Paul Kenton, a Freshman.

The Freshman Class has selected by ballot the most popular girl and the most popular boy. The honor went to Mary Nichols and Billy Young.

The Freshman Class presented a comedy called "When Jane Takes a Hand" on March 26. The cast included Anna Glover, D. C. Parrish, Mary Nichols, Rex Lyons, Kenney Shropshire, Nadine Baird, Rose Marie Sidner, Billy Thompson, Billy Young, Withers Davis, Betsy Cobb Glass, Hazel Lyons, and Carl Hopkins.



FRESHMAN CLASS

Ned Adams
Aline Argo
Dorothy Ashcraft
Nadine Baird
Gene Barr
Gene Bowen
Marion Burton
Martha Cockrell
Nellie Coughlin
Dorothy Coy
Jimmy Davis
Withers Davis
Catesby Dotson
June Doyle
Frank Fallis
Lorraine Feeback
Clarence Forbes
Charles Fryman
Mable Fudold
Mary Varnon Gibson
Justine Gifford
Betsy Cobb Glass
Anna Glover
Joe Goodman
R. L. Harney

Ray Hatton
Ann Hopkins
Carl Hopkins
Lona Howerton
Margaret Humphries
Sally Kelley
Paul Kenton
Jeanne King
J. D. King
Kenneth Kiser
Ruby Lemons
Hazel Lyons
Rex Lyons
Joanna Maher
Mary Elizabeth Mann
Elizabeth Marsh
Katherine Mattox
Hazel Myers
Mary Nichols
E. C. Parrent
Bosley Parrish
D. C. Parrish
Jim Parrish
Billy Price
Margaret Pope

Ann Richmond
Clay Roseberry
Jean Royse
Anna Mae Sargent
Alfred Shire
Kenney Shropshire
Rose Sidner
Hattie Belle Skillman
Marion Snell
Eleanor Sprakes
James Steele
Maxey Swinford
George Tate
Billy Thompson
Martha Thompson
Margaret Tune
Brady Vaughn
Marjorie Watson
Helen Weber
J. C. Watson
Hazel Williams
Henry L. Williams
Carl Willis
Billy Young
Adele Hazelrigg



EIGHTH GRADE CLASS OFFICERS

President	Molly Clayton
Vice President	Betty Jo Denton
Treasurer	Francis Kennedy
Secretary	Lida Gardner

We, of the Eighth Grade, are the "In-betweens" with neither the naivete of the Seventh nor the prestige of the Ninth. We have grown a bit from last year. Some of us know better the art of keeping our possessions intact as we rove from class to class, from auditorium programs to music, from physical ed to rallies. We attempt to keep a better balance between curricula, extra-curricula and social parts of our program. Perhaps some day we will grow up to concentrate on each at just the proper time. We believe in this well rounded existence—To prove it:

Eighth Grade Spelling Entrants—Frances Mitchell, Shirley Leder, Betty Jo Denton, Lida Gardner, Douglas Williams, Anna Belle Wassom, Margaret Marshall, Francis Kennedy, Jane Parris, Wilma Gene Cannon.

Speaking Contest—Barbara Winters, Jane Parris, John Trimble Harris, Edith McClanahan, Lorine Argo, Louise Burris.

Cheer Leaders—Betty Jo Denton, Barbara Winters.

Athletics—Too numerous to mention. In basketball we're again "in-between"—too big for midgets, too small for Regulars. Boys and girls both performed creditably. Some of the boys played football in the fall.

We have a large number of both Girl Scouts and Boy Scouts.

Scholarship—Last but not least.—There are about a dozen consistent honor roll students and several intermittent ones. The consistent ones include: Molly Clayton, Betty Jo Denton, Barbara Winters, Dorcas Dawes, Bill Buckner, Francis Kennedy, John Trimble Harris, Louise Burris, Shirley Leder, Sally Spears, Lida Gardner, Alice Grinnell, Wilma Gene Cannon

(Signed) The Eighty-two Members of Grade Eight.

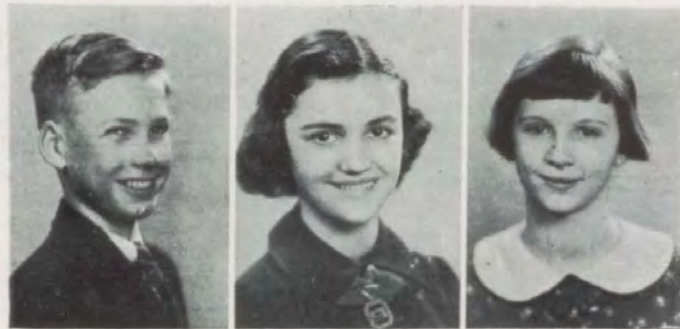


EIGHTH GRADE

Lorriane Argo
Charles Baber
Florence Barnett
Stanley Barnett
Bobbie Biddle
Lloyd Breeze
Bill Buckner
Edwin Burris
Louise Burris
Wilma G. Cannon
Harold Case
Mildred Case
Harriet Cavanaugh
Molly Clayton
Margaret Clough
Leonard Cohen
Joe Crump
Nellie Crump
Frank S. Dalzell
Omer Dalzell
Dorcas Dawes
Betty Jo Denton
Lillian Dodson
Christine Edgington
Lucille Edgington

Lida Gardner
Martha J. Goodpaster
Alice Grinnell
Forrest Haddix
Joe Halleran
John Trimble Harris
Richard Hilkey
Evelyn Himes
George Hines
Mabel Humphries
Bobby Insko
David Isgrig
Mary Lou Jones
Francis Kennedy
Matt Lair
Shirley Leder
Kathryn Lucas
Fatty Marsh
Margaret Marshall
Walter Mastin
Anne E. McClanahan
Edith McClanahan
Mace McCord
Allen McPheters
Sallie McMillan
Frances Mitchell

Jean Moore
Willana Neal
Nick Nicholas
Helen Ogden
Elgin Parker
Willie Hyson Parker
Jane Parris
Howard Pitts
Oscar Poe
Frazier Ritchie
Vernon Roe
Virgil Sanders
Irene Sargent
Phyllis Smith
Johanna Smits
Sally Spears
Irene Spivey
Manda Stewart
Terah Templin
Edna Turner
Elwood Wagoner
Anna B. Wassom
Douglas Williams
Lou Mildred Wills
Barbara Winters



SEVENTH GRADE CLASS OFFICERS

President John Gravitt
Vice President Faith Hall Phillips
Secretary and Treasurer Ann Parris

OUR SEVENTH GRADE

We're hearing now from the Seventh Grade,
At Station P. H. S.
We're on the air five times a week
To work and scheme-and guess?

Our President is John Gravitt,
And say, he's a scholar quite
Faith Hall is Vice President
And for us she plays just right.

Ann Parris is our Secretary
She's also Treasurer here.
Now for all our officers
Let's give a hearty cheer.

We may not be so large or great
As some in the higher classes.
But we shall be in Seniors' places
When they've married some fair lasses.

Yes, we're coming up to the topmost ring
On the ladder of P. H. S.
To hold up the spirit that's long prevailed
You know that we'll do our best.

So look out, you Eighth and Ninth and Tenth
Make way for the Seventh Grade!
We're coming up fast to take your places
And to raise the records you've made!



SEVENTH GRADE

Joanna Ashcraft
Ruby Allen
Forrest Babbitt
Bobby Ballard
Martha B. Baldwin
Thelma Berry
Wallace Bowles
Leland Brannon
Charles Buchanan
Nathan Buckler
Ralph Burton
Wayne Cannon
T. F. Carmichael
Ann Dudley Carr
Warren Clark
Raymond Cohen
Hamlet Collier Jr.
Toy Collins
Charles Crawford
Vivian Crisholm
Jesse Crump
Joe Curtis

Billie Dale
Madeline Deering
Hollis Dean Dennis
George Eades
Jane Edgington
Margaret Farmer
Elizabeth Ferguson
Betty Jo Flora
Everett Fryman
Virginia Gilliam
John Glover
John Gravitt
Anna Mae Gross
Ella Louise Hall
William Hopkins
Robert Horton
Louis Kidwell
Archie Kiser
Maude Lawrence
Juanita Lemons
Carl Long
Evan Mann
Dorothy McCord

Robert McCracken
Edith Mers
Irene Morgan
William Morris
James Nichols
Ann Parris
Faith Hall Phillips
Virginia Puckett
Emma Rankin
Garnett Rankin
John F. Rankin
Wallace Roe
Kimborough Schalach
Lucy Scott
James Sebastian
Nathan Shaw
Calvin Smart
Lucille Snapp
James Stanfield
Ann Vickers
Frank Wassom
Edith Williams



THE ORANGE AND BLACK GROUP

The Orange and Black Book Service we consider the most inspirational and impressive event of the year in Junior High School. It is a time when the outstanding students are honored by the rest of the students and the faculty. They are asked to write their names, along with those who have gone on in Senior High and college, as the honor students of their classes. Few fail to live up to their trust.

The ceremony originated in the spring of 1928 at the suggestion of the Junior High Camp Fire Girls sponsored by Miss Ethel Congleton then head of the Junior High Latin Department.

The students are selected by the faculty on a basis, first of all, of their willingness to cooperate with all parts of the school's program; on high achievement in their work, doing that work consistently, to the best of their ability; an interest in the scholastic and extra curricula side of their education, a participant or a loyal supporter of the school's athletics; their attitude toward their fellow students; their ability, at all times to abide by the regulations of the school; their loyalty and faithfulness to its ideals. In brief, it is an attempt to emphasize and recognize those traits which enter into the making of worthwhile citizens of the future.

1936 HONOR STUDENTS

Class of '40

Betsy Brooks Woodford
Bobby Myers
Elizabeth Grimes Chapman
Norma Mae Mastin
Lucy Woodford Kenney
Betty Mae Dalzell
Martha Adair Thomas

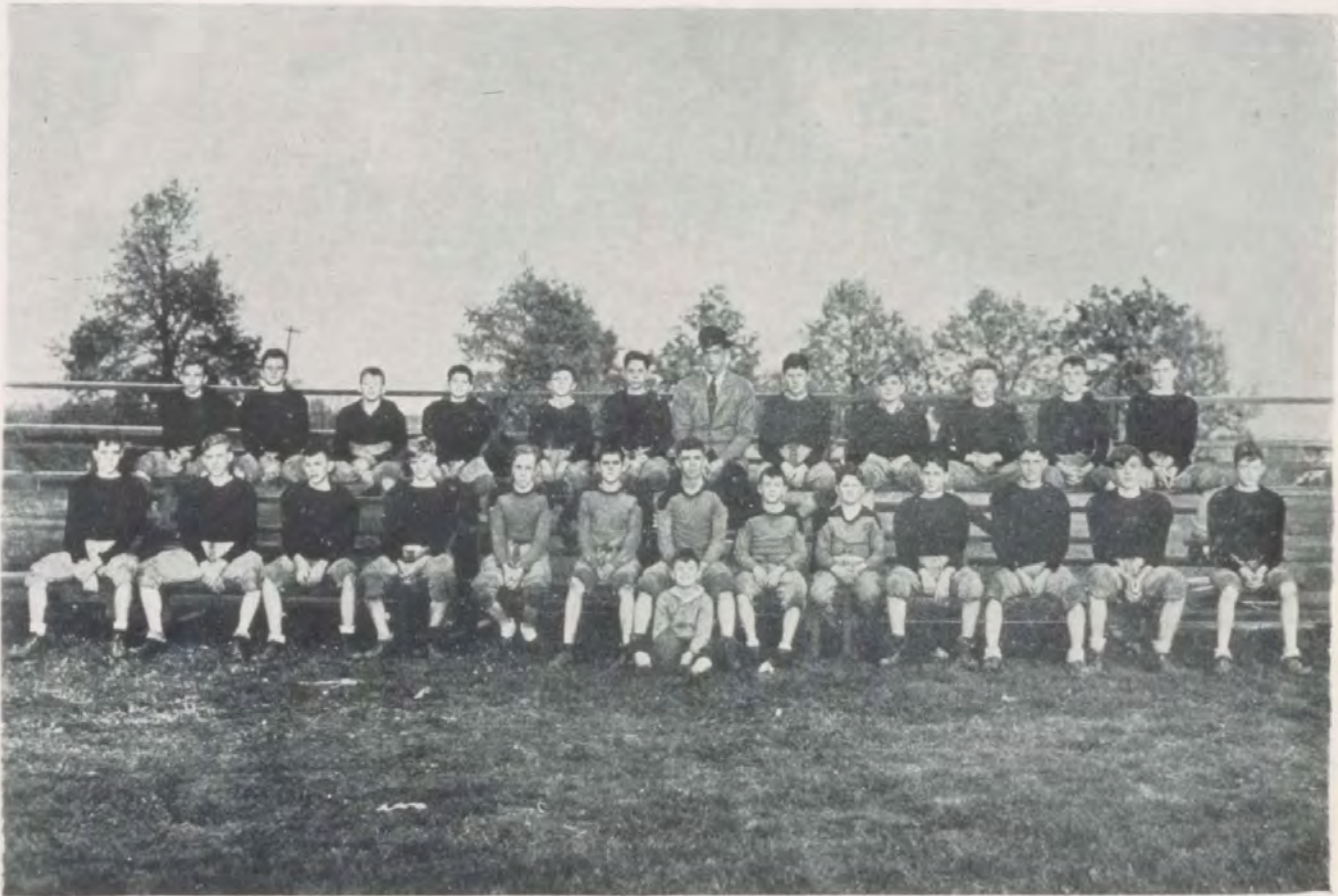
Nancy Heaves Hinkle
Margaret Lowry Arnsparger
Mary Ward
Carey Adair
Nancy Williams
Billy Grimes

Class of '41

Hazel Lyons
Marion Snell
Betsy Cobb Glass
Gene Barr

Class of '42

Molly Clayton
Betty Jo Denton



JUNIOR HIGH FOOTBALL

This year has been the most successful season any Paris Junior High team has had in years. The Thorobreds were coached this year by Wilford "Doc" Lual'en, a product of Ohio State and Paris High School. This year was "Doc's" first attempt at coaching and he certainly did a fine job of it. We expect to see Coach Lual'en at the head of the Thorobreds when they report for practice next fall.

The Thorobreds were not defeated this year and have been scored on only twice.

1936 SCHEDULE

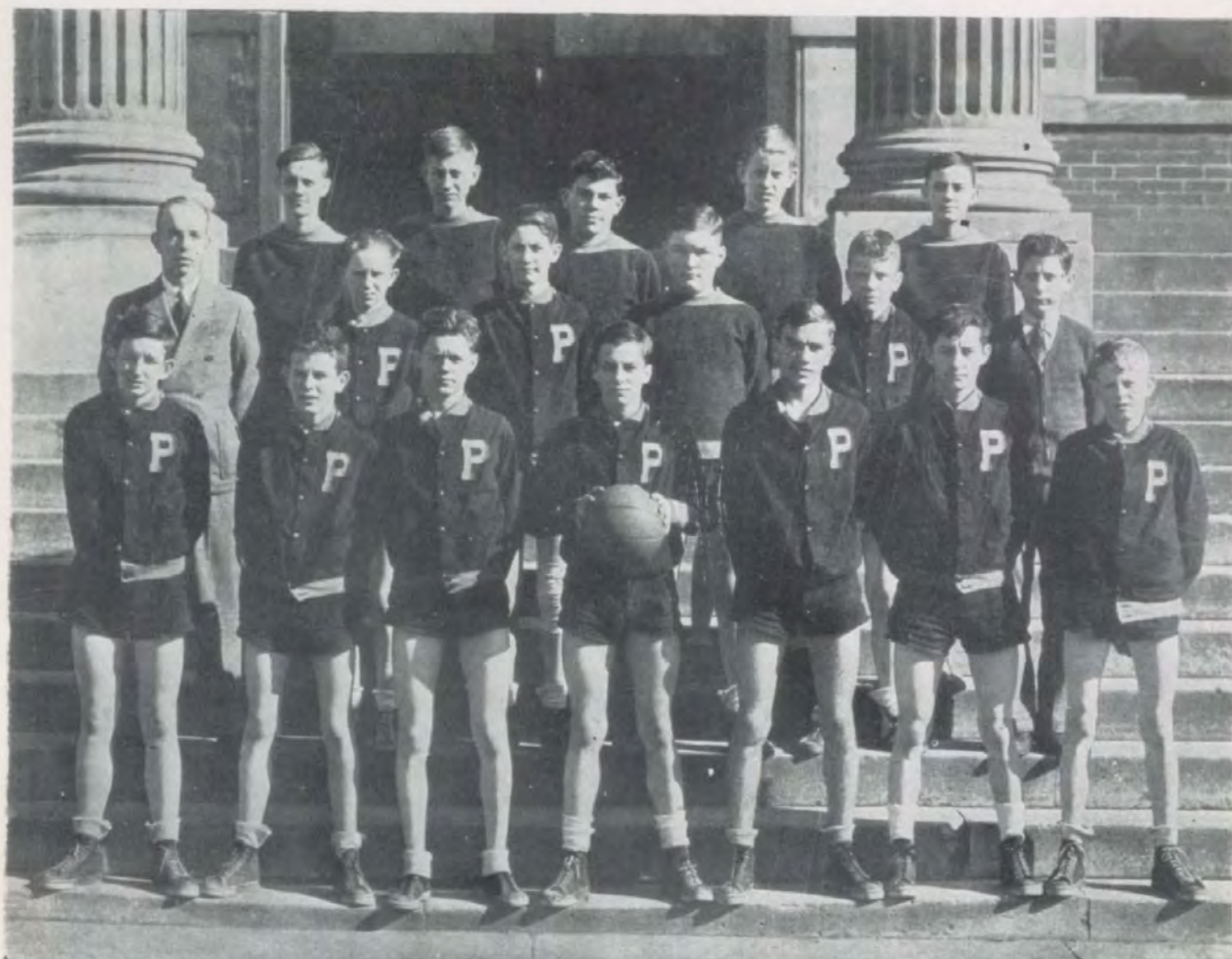
Lexington "Y" -----	6	Paris -----	7
Winchester -----	7	Paris -----	13
Georgetown -----	0	Paris -----	25
Winchester -----	0	Paris -----	12
Lexington "Y" -----	0	Paris -----	6
M. M. I. -----	0	Paris -----	6
Ceredo-Kenova, W. Va. -----	0	Paris -----	6
Won 7		Lost 0	
		Tied 0	

LIST OF JUNIOR HIGH FOOTBALL TEAM

1. Joe Goodman	7. Billy Price	13. Clay Roseberry	19. Jimmy Davis
2. Jim Parrish	8. Jimmie Steele	14. Joe Crump	20. Rex Lyons
3. D. C. Parrish	9. Nick Nicholas	15. T. F. Carmichael	21. J. D. King
4. R. L. Harney	10. Edwin Burris	16. Clarence Frye	22. Emory Florence
5. Matt Lair	11. Ned Adams	17. Bob Ballard	23. Mace McCord
6. Stanley Barnett	12. Willy H. Parker	18. H. mlet Collier	24. Kenneth Kiser

FOLLOWING BOYS RECEIVED NUMERALS FOR FOOTBALL

1. Joe Goodman	7. Billy Price	13. Jimmie Davis
2. Jim Parrish	8. Jimmie Steele	14. Rex Lyons
3. D. C. Parrish	9. Nick Nicho'as	15. J. D. King
4. R. L. Harney	10. Edwin Burris	16. Emory Florence
5. Matt Lair	11. Clay Roseberry	17. Mace McCord
6. Stanley Barnett	12. Clarence Fry	18. Kenneth Kiser



JUNIOR HIGH BASKETBALL SQUAD

The Paris Junior High Thorobreds have played one of the most difficult schedules ever attempted by a Paris Junior High team.

The Thorobreds were coached this year by Coach Dick Butler of Washington and Lee University. He came to Paris as head coach of Junior High Athletics in the fall of 1934. He is now completing his third year as coach of the Paris Junior High Thorobreds.

SCHEDULE

Berry Reserves	13 -- Paris.. 9	Winchester	8 -- Paris.. 6	Mt. Sterling	7 -- Paris..19
Flemingsburg	10 -- Paris.. 7	Morton Jr. Hi	20 -- Paris..19	Lexington	14 -- Paris..10
Oxford Reserves	25 -- Paris..12	M. M. I.	11 -- Paris.. 7	Irvine	4 -- Paris..18
Berry Reserves	17 -- Paris..16	Flemingsburg	6 -- Paris.. 8	M. M. I.	15 -- Paris..11
Morehead	27 -- Paris.. 9	Winchester	40 -- Paris..11	University Hi	9 -- Paris..16
University Hi	11 -- Paris..22	Morehead	12 -- Paris..14	Morton Jr. Hi	13 -- Paris.. 8
Oxford Reserves	11 -- Paris.. 6	Lexington	21 -- Paris..18	Kenova, W. Va.	24 -- Paris..15
Played 21		Won 5		Lost 16	

LIST OF JUNIOR HIGH BASKETBALL PLAYERS

1. Joe Goodman	6. Paul Kenton	10. Elwood Wagoner	14. Howard Pitts
2. Jim Parrish	7. Matt Lair	11. Billy Young	15. Vernon Roe
3. C. R. Parrent	8. Stanley Barnett	12. Edwin Burris	16. Henry Lee Williams
4. D. C. Parrish	9. Oscar Poe	13. Bradey Vaughn	17. Billy Thompson
5. R. L. Harney			

FOLLOWING BOYS RECEIVED NUMERALS FOR BASKETBALL

1. Joe Goodman	3. D. C. Parrish	5. R. L. Harney	7. Stanley Barnett
2. Jim Parrish	4. C. R. Parrent	6. Paul Kenton	8. Mace McCord—Manager

THE PARISIAN



HERE AND THERE

Billy Young—"Shall we waltz?"
 Nadine Baird—"It's all the same to me."
 Billy—"So I've noticed."
 'Twas in a restaurant they met,
 Romeo and Juliet.
 He had no cash to pay the debt
 So Romeo'd what Juli'et.

Moral: Say it with flowers,
 Say it with kisses,
 Say it with eats,
 Say it with jewelry,
 Say it with drink,
 But never, no, never.
 Say it with ink.

The long and the short of the Eighth Grade—Howard Pitts and Joe Holleran.
 Miss Mitchell—"Lida, will you tell us how cement is made?"
 Lida G.—"You mix crushed rock, sand, water"_____
 Miss M.—"No, Lida, I said cement, not concrete."
 Lida—Repeats what she has just said_____
 Miss M.—"Lida, get concrete out of your head and_____
 Section A succumbs to giggles.

THE PARISIAN

CHARACTERISTICS

F. Kennedy and B. Buckner—"May I ask so and so where my English, Geography, Arithmetic Lesson is?"

Gene Cannon—"Miss Mitchell, will you find my mistake in this problem?"

F. S. Dalzell—"Miss Hunter, may I go speak to Mr. Fightmaster?"

Edna Turner—"May Mary Lou and I go give out our—(any lesson)?"

J. Parrish—Gene Cannon, in concert "May I go ask Mrs. Greer if we are going to have gym?"

HOBBIES & ETC.

P. Marsh—Talking
F. Kennedy—Day dreaming
Pitts—Airplanes
Nichols—Yo-yo-ing
Argo—Scrap books
Buckner—Music
Hilke—Electricity
Lair—Athletics
Marshall—Movie Stars

Cannon—Chatterbox
McPheeters—Girls
Williams—Shows
Burris—Laryngitis
Snell—Studying
Farrishes—Blushing
Young—Showing off
J. King—Boys
W. Davis—Human?

Hopkins—Class nuisance
Maher—"Noise"
A. Shire—Stamp collecting
B. Glass—Curls
Baird—Evansville
Nichols—Dates
Gibson—Shows
Shropshire—"Myrtle"

WATCHING GAME

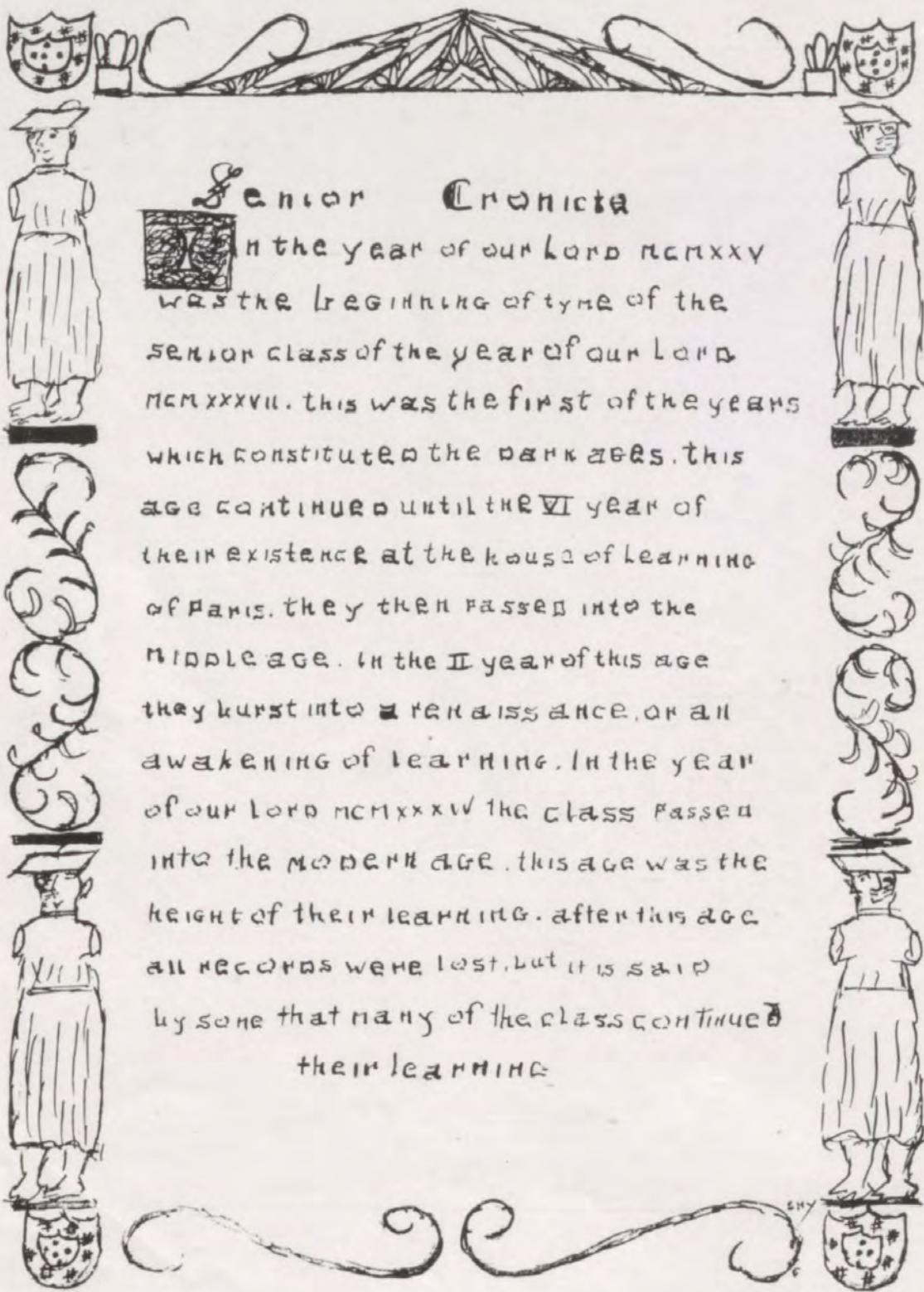
1. Who looks wise as an owl, but is the midget of the class?
2. Who doesn't know the alphabet has any letter except A?
3. Who always carries a load "too heavy to bear"?
4. Who is the artist of the class with the German name?
5. What boy believes that long hair is a sign of brains?
6. Who is the country "lass" with the delicate (?) air?
7. What boy of few words is "always there with the goods"?
8. Whose little car is always running?
9. Who carries the name of her town wherever she goes?
10. Whose ancestor could not spell "bear"?
11. Who is the future bandmaster of the school?
12. Whose name is a harbinger of Spring?
13. Who is the longest, lankiest, and loudest member of the class?
14. Who always has "faith" in the girls of the class?
15. Who is not as sour as her name would indicate?
16. Who is the absent minded bookworm?
17. Who is the fat, jovial fisherman of the seventh grade?
18. Who is the smartest boy in Miss Purnell's room?
19. Who is the happy namesake of one of Shakespeare's tragic heroes?
20. What girl's names would indicate a precious stone, a tiller of the soil, and a happy spirit?
21. What girl could have ruled the Germans?
22. What Kansas "Berry" joined us this year?
23. What "men" are in the Seventh Grade?
24. What boy will never be out of money?
25. What girl is worth a dozen dozen?

ROLL

- | | | | |
|-------------------------|--------------------|--------------------|---------------------|
| 1. Ruby Allen | 8. Billy Dale | 15. Bobby Ballard | 22. Skeets Brannon |
| 2. Gay Bramel | 9. Ann Dudley Carr | 16. Clay Smith | 23. Hamlet Collier |
| 3. Calvin Smart | 10. Nathan Shaw | 17. Jesse Crump | 24. Margaret Farmer |
| 4. Audery Kiser | 11. Raymond Cohen | 18. Robin Horton | 25. James Nichols |
| 5. Faith Hall Phillips | 12. Ann Parris | 19. Anna Mae Gross | 26. Herman Robinson |
| 6. Elizabeth Ferguson | 13. Ralph Burton | 20. Juanita Lemons | 27. Evin Mann |
| 7. Martha Boone Baldwin | 14. Frank Wassom | 21. Bill Hopkins | 28. Thelma Berry |



Features



Senior Chronicle

In the year of our Lord mcmxxv was the beginning of time of the senior class of the year of our Lord mcmxxvii. this was the first of the years which constituted the dark ages. this age continued until the VI year of their existence at the house of learning of Paris. they then passed into the middle age. In the II year of this age they burst into a renaissance, or an awakening of learning. In the year of our Lord mcmxxxv the class passed into the modern age. this age was the height of their learning. after this age all records were lost, but it is said by some that many of the class continued their learning.

THE PARISIAN

POCKET HISTORY OF A PARISIAN

HIM

CONTENTS OF POCKETS IN GRADE IV:

- 1 watch lacking the mainspring.
 - 1 report card, badly frayed, and unrepresented at home.
 - 1 pen-knife with broken blade.
 - 1 rubber band for shooting paper wads.
 - 3 marbles, badly chipped.
 - $\frac{1}{2}$ piece of chewing gum.
 - 6 pieces of string.
 - 2 keys which do not fit any locks.
-

CONTENTS OF POCKETS IN JUNIOR HIGH:

- Same watch, still without mainspring.
- 6 cents in change.
- 1 pen-knife, received at Christmas.
- 1 rubber band for shooting paper wads.
- 1 dirty handkerchief.
- 1 clean handkerchief.
- 3 notes from 3 different girls.
- 1 worn Tenderfoot Boy Scout badge.
- 3 melted caramels.
-

CONTENTS OF POCKETS AS A SENIOR:

- 1 Ingersoll watch.
 - 1 billfold with 13 cents in change.
 - 1 highly prized girl's handkerchief.
 - 1 pocket comb.
 - 1 unpaid bill for Class ring.
 - 1 odorous pipe.
 - 1 dance bid.
 - 1 blank address book.
 - 1 letter on lavender stationery from a girl who lives in Versailles, signed with numerous X's.
 - 1 letter on blue stationery from a girl who lives in Lexington, also signed with numerous X's.
 - 1 picture of a girl who does not live in either Versailles or Lexington.
 - 2 keys, unlocking:
 - (1) His own front door.
 - (2) An automobile which belongs to a girl's father.
-

And then he goes to State, where no one cares what he has in his pocket.

HER

CONTENTS OF PURSE IN GRADE IV:

- 1 dime and two pennies
 - 1 Mickey Mouse handkerchief.
 - 1 piece of a broken mirror.
 - 1 half-consumed Hershey Bar.
 - 1 badly chewed pencil.
 - 1 used piece of chewing gum, wrapped in a piece of paper for future use.
-

CONTENTS OF PURSE IN JUNIOR HIGH:

- 1 quarter and three pennies
 - 1 handkerchief decorated with streamlined dogs.
 - 2 sticks of chewing gum.
 - 1 half-consumed Hershey Bar.
 - 1 cracked mirror.
 - 1 lipstick.
 - 1 powder-box.
 - 2 notes from two different boys.
 - 1 stubby pencil.
 - 1 fountain pen.
 - 1 broken bracelet.
 - Assorted Bobby pins.
-

CONTENTS OF PURSE AS A SENIOR:

- 1 half-dollar, 1 quarter and 1 penny.
 - 1 initialled handkerchief.
 - 1 stick of chewing gum.
 - 1 half-consumed Hershey Bar.
 - 1 mirror.
 - 1 compact.
 - 2 lipsticks.
 - 1 mascara.
 - 1 stubby pencil.
 - 1 fountain pen.
 - 1 wrist-watch with broken strap.
 - 1 boy's Class ring which is too large.
 - Assorted Bobby pins.
 - 3 no-break cards for three different dances.
 - A magazine picture of Robert Taylor.
 - A picture of a boy who is not Robert Taylor.
 - 1 carefully guarded address book.
 - 1 miniature Slim-book.
-

And then she goes to State, where no one cares what she has in her purse.

—Jim Caldwell, '37.

THE PARISIAN

CALENDAR FOR 1936-37

September 10, 1936—Opening of school.
September 25, 1936—Opening of football season. Paris was defeated by Shelbyville, 25 to 6.
October 12, 1936—First experiment in Chemistry Laboratory. Just a bunch of greenhorns!
October 21, 1936—First mishap of year. Joe Endris tried to blow up the lab.
October 27, 1936—French Club initiation. My oh my! vot pipple!
October 30, 1936—In football game with Winchester, Duvall set a C. K. C. record, scoring 42 points.
November 13, 1936—Debonair Dance to celebrate end of the football season. Everybody happy (except Debonairs).
November 25, 1936—Football Banquet at Windsor Hotel.
December 3, 4, 5, 1936—Girl Reserve Conference. Oh joy!
December 4, 1936—Basketball season opened. Paris defeated Gleneyrie, 26 to 5.
December 11, 1936—Junior Class Play (Too much sound effect).
December 17, 1936—Girl Reserve Christmas party for lower grades.
December 18, 1936—School closed for Christmas Holidays. Hurrah!
December 22, 1936—School Choir sang at Veteran's Hospital, Lexington.
December 23, 1936—School Choir sang at Windsor Hotel.
December 24, 1936—School Choir hoarse by this time.
January 4, 1937—Christmas Holidays over. Everybody sore.

Moral:

Lack of sleep causes circles under the eyes
Dissipation causes bags under the eyes
Christmas Vacation causes circles under the bags under the eyes.

January 8, 1937—Paris suffered only CKC loss of year in basketball. Greyhounds defeated by Shelbyville, 25 to 16.
January 8 to 18, 1937—Interlude of intense cramming.
January 18, 1937—Exams start.
January 19, 1937—Exams.
January 20, 1937—More exams.
January 21, 1937—Still more exams.
January 22, 1937—Exams are over. Whew!
January 22 to 24—Students celebrate most appreciated week-end of year.
January 27 to 30—Charlie Carr in Louisville with radio set trying to outwit flood.
February 4, 1937—School Choir sang over radio at Memorial Hall, Lexington.
February 23, 1937—T. T. T. Club sweaters make first appearance. (What does it stand for? Coach said it means "Twit, twit, twit").
February 23, 1937—Pep Club entertained for Harrodsburg visitors.
March 4, 5, 6, 1937—District Basketball Tourrument at M. M. I. Paris eliminated by Carlisle in second round. Tears six feet deep!
March 16, 1938—Seniors win Class Tournament.
March 25, 1937—Freshman Class Play.
April 2, 1937—Girl Reserve Tea Dançe.
April 9, 1937—Spring Vacation starts. Whoopee!!!
April 19, 1937—Spring Vacation ends. Ouch!!!

June 8, 1937—Junior Prom.
June 9, 1936—Junior High Commencement.

June 9, 1937—Class Night Program.
June 10, 1937—Graduation Exercises.

CLASS WILL

We, the Seniors of 1937, do hereby bequeath our autographs to our beloved Alma Mater, Paris High, as a symbol of our everlasting and grateful appreciation for the years of inspiration, happy association and coveted friendships that have been ours.

Helen Johnson
Rose Burke
Nancy Miller Pol
Peyton Horton
Martha Lair
Josephine Bowen
Marian Clark
John Ratliff
Beattie Gussard
W. J. Barr
Jim Caldwell, Jr.
Lloyd M. Halladay
Russell O. Luski
Albert Bogue
Brice Steele Jr.
John Preston
Charles Carr
Nell I. Drake
Catherine Morgan
Ann Harding Davis
Elaine Mann
Robert Smith
Edward Faries

Joe Endris
Roy Galloway
Marian Dickey
Katharine Nichols
Perry Wasson
Thomas Tobin
Charles Thomas, Jr.
Miller Ashcraft
Hayden M. Cairns
Paul V. Biddle
Frank Parker
Elmer McLeod
Dorothy Laid
Ray Skout
Jane Richard
Kathryn Fryman
Geneva Ashcraft
Thelma Kenney
Douglas McCall
Frank Thy
Adrian L. Cooper
Edward Hithman
Carl Morgan





THE PARISIAN

RECENT HONORS WON BY PARIS HIGH SCHOOL STUDENTS COLLEGE HONORS

PHI BETA KAPPA

University of Kentucky	Phil Ardery
Edith Allison	Lucy Jean Anderson
Mary Eleanor Isgrig	Jean Allen
Bonnie Perkins	
Isabel Isgrig	
Northwestern University	
Josephine Ewalt	
Randolph-Macon Woman's College	
Constance Kennedy	

FRESHMAN HONOR CUP

University of Kentucky	
Bonnie Perkins	1929
Isabel Isgrig	1930
Phil Ardery	1932
Dorothy Ann Dundon	1933

GRADUATED WITH HIGHEST DISTINCTION

University of Kentucky	
Lucy Jean Anderson	1935
Dorothy Ann Dundon	1936
Georgetown College	
Jessie Irvine	Katie Irvine
Northwestern University	
Joe Greer	1936
(One of 17 out of 1500 graduates to receive this honor)	

A. S. SULLIVAN BRONZE MEDALLION

To the Outstanding Senior

University of Kentucky	
Lucy Jean Anderson	1935

ALPHA GAMMA DELTA CUP

For Outstanding Freshman

University of Kentucky	
Helen Farmer	1933

CHI OMEGA CUP

For Outstanding Freshman

University of Kentucky	
Betsy Allen	1936

EDITOR OF "KENTUCKIAN"

(Annual)

University of Kentucky	
James Anderson	1937

GRADUATED WITH HIGHEST HONOR OF CLASS

University of Michigan Law School	
James Wilson	1936
President of Senior Class.	

WINNERS OF FIRST PLACES IN STATE SPEAKING CONTESTS

Debating Team—1925

Sarah Bradley
Louise Dailey
Earl Boen

Extemporaneous Speaking

Joe Greer	1932
Anne Catharine Young	1935

Public Discussion

Franklin Bell	1925
Sam Milner	1932
Sam Clay	1934
Anne Catharine Young	1935
Jane Clay Sutherland	1937

Oral Interpretation

Sarah Gaitskill	1934
-----------------	------

Honor Graduates - Winners of the Georgetown College Alumni Cup—

Award of this cup is based on scholarship, leadership, attitude and deportment.

Leona Mazey, 1925; Kady Elvove, 1926; Edith Allison, 1927; Bonnie Perkins, 1928; Isabel Isgrig - James Wilson, 1929; John Santen, 1930; Edward Prichard, 1931; Joe Greer, 1932; Jean Allen - Constance Kennedy, 1933; Henrietta Bedford, 1934; Sam Clay - Sarah Gaitskill - Anne Catharine Young - Elies Elvove, 1935; Helen Taylor Hazelrigg, 1936.

NATIONAL SCHOLASTIC HONORS

Joe Greer—Austin Scholarship to Northwestern University, 1932.

Edward Prichard—Selected by the Press Association as one of six brightest and best informed boys in America; awarded the European trip 1931. First honors in Centre College Scholarship Contests, 1931. Awarded scholarship to Harvard Law School, 1935.

Marian Connell—National award of D. A. R., 1931.

Constance Kennedy—National award of D. Q. R., 1932. Who's Who's in American Colleges, 1936. President of Southern Intercollegiate Association of Student Government, 1936-1937.

Jack Nickerson—Received Senatorial appointment to West Point on basis of competitive examination and school record, 1934.

Lucy Jean Anderson—Who's Who's in American Colleges, 1935.

Phil Ardery—Who's Who's in American Colleges, 1935.

Helen Farmer—Who's Who's in American Colleges, 1936.

INTERNATIONAL HONORS

Bryan Redmon—Paris High School Class 1927; University of Kentucky 1931; A. M., Amherst 1932; Ph. D., Amherst 1934; Fellowship, University of Berlin, for academic year 1934-1935 by selection from Nation's outstanding scholars.

HONORS IN ATHLETICS

Basketball—

Central Kentucky Conference Champions—1931, 1932, 1933, 1936, 1937.
Record of 45 consecutive victories in C.K.C. from 1930-1934.

Football—

Central Kentucky Conference Champions with Lexington 1933.
Central Kentucky Conference Champions 1934.



JANE CLAY SUTHERLAND

Winner State Contest Public Discussion, Sponsored by University of Kentucky and Louisville and Lexington Leagues of Women Voters, 1937. Award of \$25.



RHODES SKILLMAN

Winner Sixth Place State Spelling Contest, Sponsored by Louisville Courier-Journal, 1937. Award of \$25.

WINNERS IN DISTRICT MUSIC CONTESTS--1937

Mary Ellis Chappell	Soprano	Rating, Superior
Hayden Carmichael	Tenor	Rating, Excellent
Douglas Moore	Bass	Rating, Good
Carl Morgan	Baritone	Rating, Good
Martha Thomas	Piano	Rating, Good

MALE QUARTETTE—Rating, Excellent

Hayden Carmichael	John Preston
Carl Morgan	Larry Brannon

MIXED QUARTETTE—Rating, Excellent

Hayden Carmichael	Mary Ellis Chappell
Carl Morgan	Mary Anna Maupin

OCTETTE—Rating, Excellent

Paul Biddle	Carl Morgan	Mary Ellis Chappell	Jane Clay Sutherland
John Preston	Arthur Hollis	Catherine La Frana	Virginia Cavanaugh

RATING IN STATE MUSIC CONTEST--1937

Junior High School Mixed Chorus	Superior
Mixed Glee Club	Excellent
(Highest rating given in division)	
Boys' Glee Club	Good
(Highest rating given in division)	
Chapel Choir	Good
(Highest rating given in division)	
Martha Thomas—Piano	Excellent
Mary Ellis Chappell—Soprano	Excellent
Carl Morgan—Baritone	Good
Mixed Quartette	Good
Girls' Glee Club	Good
Elmer McCord—Saxophone	Good
Frank Shy—Clarinet	Good
Nancy Williams—Trumpet	Good

BUSINESS PATRONS AND FRIENDS

The Sweet Shop
Paris Pharmacy
Ardery Drug Co.
Wollstein's Clothing Store
Gibson Motor Co.
Price & Co.
Logan Howard
S. A. Belt
J. S. Varden
Bond Cleaners
Spikes'
J. C. Penney Co.
Davis Funeral Home
Roxie Davis
William Blanton
Bourbon Hatchery
B. J. Santen
George L. Doyle
Will S. Arnsperger
I. L. Glass (I. G. A.)
John Sauer
Pearce Paton
David L. Cline
Gene Lair
Dr. H. G. Gilliam
Worick Bros.
Windsor Hotel
The A. J. Winters Co.
Joe Mitchell (I. G. A.)
Sheeler Lumber Co.
N. Ford Brent
Wheeler Furniture Co.
C. P. Cook
The Men's Shop
Ed. Hitch Barber Shop
Clyde Tyree Shoe Shop
Albert Johnson
Bourbon Garage, Oldsmobile Dealers
Carl Lusk, Sr.
Grant Overby
O. M. Lykins, Shoe Repair
Lerman Bros. Dept. Store
James Ewalt
Elmer Wallace

J. W. Davis & Co.
Betsy and Sally Buckner
Sally Davis
Mary Elizabeth Overby
Herbert Young
Mrs. L. C. Ashcraft
Dorothy Sharon
Riley Martin
Gladys and Edith Speakes
Jean McMillan
Douglas Wilson
Dr. H. E. Mathers
Clifton Arnsperger
Alex's Grill
E. F. Prichard
Wolford Ewalt, Sr.
C. Morgan
Rev. A. W. Huyck
Hinton-Turner Funeral Home
Benton Beauty Salon
Strickler Furniture Co.
Dr. Eugene Hyden
Alice Mae Beauty Shop
Dr. J. A. Gilkey
La Rose Beauty Shop
Moore's Service Station
J. J. Newberry Co.
City Light & Power Co.
Bourbon Lumber Co.
Mansfield & Jefferson Lumber Co.
Bourbon Produce Co.
Dr. C. G. Daugherty
Freedman's Shoe Store
H. L. Spillman
Dr. H. S. Grubbs
Paris Garage
Helen Weigott
John Merringer
D. H. Didier
E. H. Gorey
Dr. R. C. Bate
The National Bank & Trust Co.
Dr. S. M. Rickman
Dr. B. N. Pittenger

