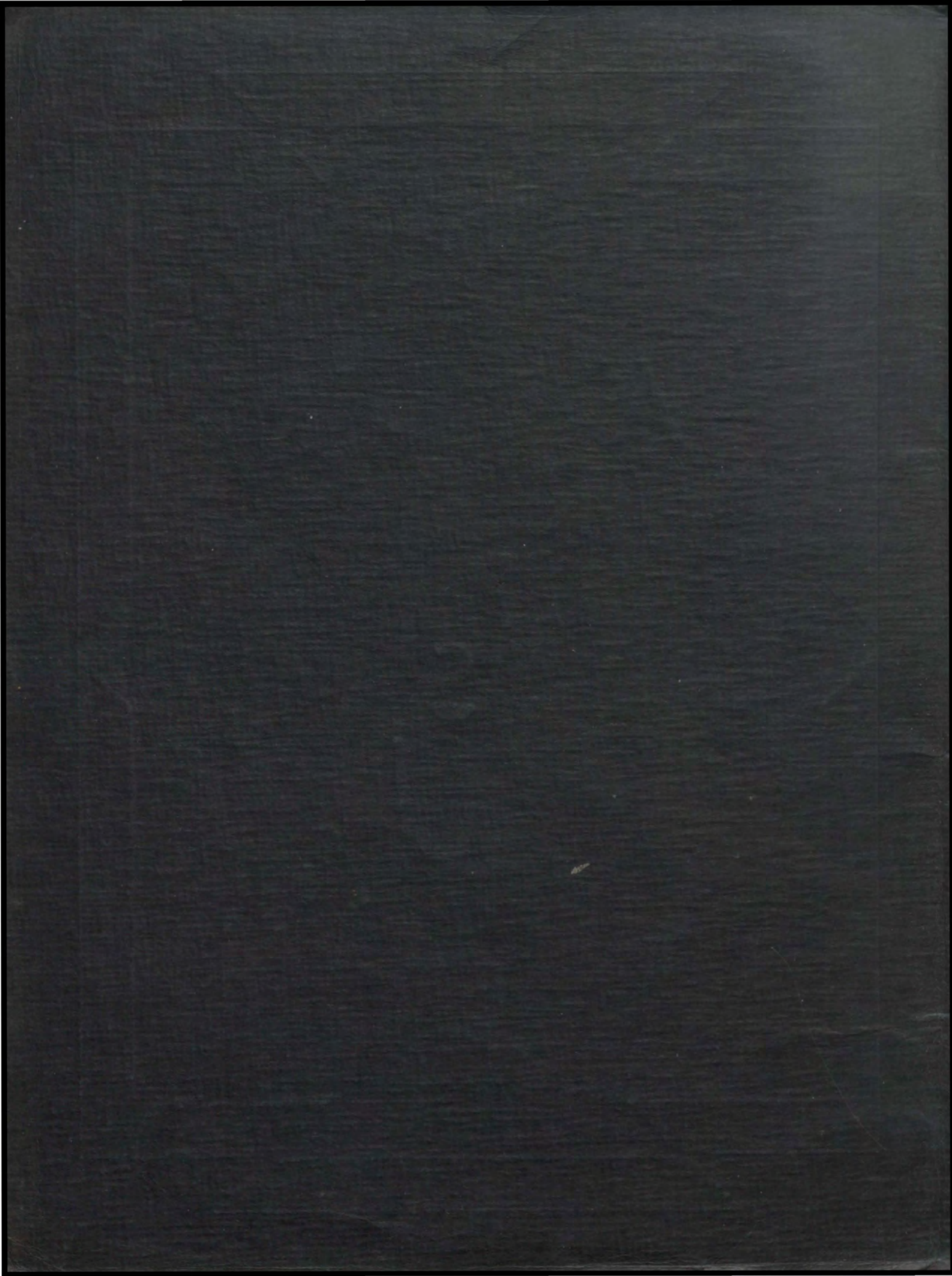


THE
P
A
R
I
S
I
A
N

1940



The Parisian

1940

Volume 15



Published by the
Senior Class
of Paris High School
Paris, Ky.

FOREWORD

Another year has gone forever. The hard work and the good times which it has been our lot to share are now existent in memory only; but knowing the weakness of memory we cannot help but wish for something more tangible to strengthen the bond between ourselves and our school.

It is our hope that this book will serve that purpose. In the years to come when we turn its pages, we want it to supply the magic word which will awaken the slumbering memories and carry us back to our good old Paris High School.

H. W.



LEE KIRKPATRICK, A. B., M. A., LL. D.

Superintendent

A. B., Georgetown College

M. A., Columbia University

Graduate Student, Harvard University



STAFF OF "THE PARISIAN"

EDITORS-IN-CHIEF.....Alfred Price Shire, George Sidney Tate

ASSISTANT EDITORS.....Mary Nichols, Nadine Baird

BIOGRAPHERS.....Loraine Feeback, Frances Sellers, Jean Royse

SNAPSHOT EDITORS.....Mary Varnon Gibson, Betsy C. Glass, Kenneth Kiser

SPORTS EDITORS.....Ray Hatton, Billy Young

ART EDITORS.....June Doyle, Alfred Shire, Withers Davis

POET.....Sally Kelly

BUSINESS MANAGERS.....Clay Roseberry, Kenney Shropshire, Martha Thompson, Billy Thompson

JOKE EDITOR.....Hazel Lyons

FEATURE WRITER.....Helen Weber

TYPISTS.....Gene Barr, Dorothy Ashcraft

REPORTERS—JUNIORS.....Betty Jo Denton, William Buckner, Molly Clayton

REPORTERS—SOPHOMORES.....Ann Dudley Carr, Faith Hall Phillips, Billy Joe Johnstone



HELEN HUNTER
A. B., University of Kentucky
M. A., Columbia University
History



BLANTON COLLIER
A. B., Georgetown College
Mathematics
Coach Football, Basketball



MRS. MAUDE BRIGGS
A. B., University of Kentucky
English

Maude M. Briggs



MRS. LOUISE CLAY
A. B., University of Illinois
Librarian

Louise Clay



MARIAN MITCHELL
A. B., Randolph-Macon
M. A., Columbia University
Geography



RICHARD BUTLER
A. B., Washington & Lee University
Mathematics
Assistant Coach Football, Basketball



ALICE McCLINTOCK
A. B., Georgetown College
M. A., University of Michigan
Latin

Marian Mitchell



MARY ELEANOR ISGRIG
A. B., University of Kentucky
Science

Mary Eleanor Isgrig



GILBERT LAVIN
A. B., University of Kentucky
M. A., University of Michigan
Latin



LULU BATCHELDOR
A. B., Transylvania College
M. A., Columbia University
Graduate Student Cambridge
University
Political Science

Lulu Batchelder



F. A. SCOTT
A. B., Southwestern University
M. A., Columbia University
Principal—Mathematics



MRS. W. V. SHAW
A. C. A., Bowling Green
A. B., Bowling Green
Commerce



ZERELDA NOLAND
A. B., University of Kentucky
M. A., Columbia University
English

Zerelda Noland



EDITH L. MONSON
A. B., Georgetown College
M. A., University of Michigan
Middlebury French School
French and Spanish



MRS. DAN PEED
B. S., University of Kentucky
Home Economics



DEAN M. PARRISH
A. B. Georgetown College
Graduate Student, University of Kentucky
Vocational Coordinator
Track Coach
Assistant Coach Football, Basketball



MRS. HELEN D. HAZELRIGG
A. B. University of Kentucky
M. A., Columbia University
History and Literature



ELLEN BLANDING
University of New York
Music



KATHERINE CALDWELL
A. B., Western Kentucky State
Teachers' College
English



AGNES PURNELL
A. B., University of Kentucky
Mathematics

Classes



Alfred Shira

THE PARISIAN

SENIORS



SENIOR CLASS OFFICERS

President.....George Sidney Tate
 Vice-President.....Kenney Shropshire
 Secretary.....Alfred Shire
 Treasurer.....Betsy C. Glass

DEPARTURE FROM PARIS HIGH

I didn't think I'd miss Paris High
 Until it was time to leave
 I thought that I'd be happy
 But now I find I grieve

I guess I didn't realize
 That Paris High could matter so,
 Until we all graduate
 And each, quickly turns to go.

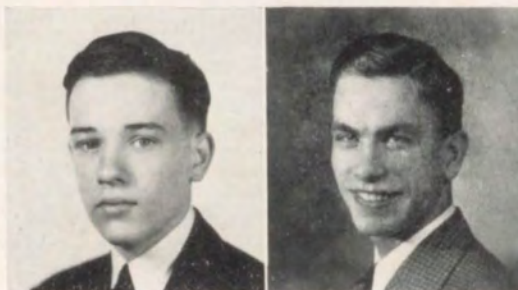
Each day I keep remembering
 Words that our teachers used to say
 And somehow keep wishing
 That we didn't have to go away.

H. W.

Edward Sutherland
 "40"

Edward Sutherland

Band 1, 2; Choir 4; Glee Club 1, 2, 3, 4; Football 3; Football Manager 4; Latin Club 2; El Circulo Espanol 4; Basketball Manager 4; Track 3; Male Quartet 4; Septet 3; Class Play 1.



Coly R. Parrent

Latin Club 2; Boys' Glee Club 2, 3, 4; Commercial Club 3; Garden Club 2; El Circulo Espanol 3, 4; Choir 2; Band 1, 2, 3, 4; Basketball 1; Track 2, 3.

THE PARISIAN

Alfred Shire

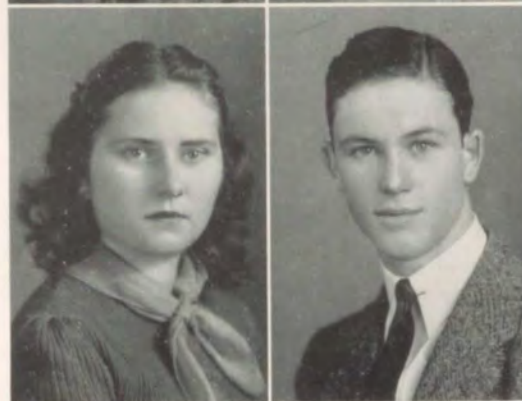
Alfred Shire

Public Discussion 1, 2, 3, 4; Radio Speaking 3, 4; All State Chorus 4; Male Quartet 3; Latin Club 2, 3, 4; Boys' Glee Club 2, 3, 4; Commercial Club 4; Co-Editor, Annual 4; Art Editor 4; Garden Club 2 (Treasurer, 2); Science Club 3, 4; Class Play 2, 3; Chapel Choir 4; Band 1; Class Secretary 4; Beta Club 3, 4; Service Club 4; Debating Club 3, 4 (Vice-President, 4); National Forensic League 3, 4 (Vice-President, 4); Honor Roll 1, 2, 3, 4; Class Reporter 2, 3; Art Club 1, 2, 3, 4.



Ruby Lemons

Latin Club 2; Home Ec. Club 1; Physical Education 1, 2; Commercial Club 3, 4; Girl Reserves 2, 3, 4; Garden Club 2; Science Club 1, 2, 4.



Jim Parrish

Jim Parrish

Football 2, 3; Basketball 2, 3, 4; Track 2, 3, 4; Spanish Club 4; Latin Club 2; Garden Club 2; Science Club 3.



Elizabeth Lou A. Marsh

Latin Club 1, 2; Commercial Club 3, 4; Garden Club 2 (Secretary); Science Club 3; Home Economics Club 4; Girl Reserves 2, 3, 4; Poetry Reading 3 (3rd place); Oratory 4 (3rd place).



Kenney Shropshire

Kenney Shropshire

Home Ec. 1; Girls' Glee Club 2, 3, 4; Physical Ed. 1, 2; Commercial Club 3; Girl Reserves 2, 3, 4; Annual Staff 4; Garden Club 2; Le Cercle Francais 2, 3, 4 (Pres., 4); Class Play 1, 2, 3; Chapel Choir 3, 4; Class Vice-President 4; Beta Club 3, 4 (State Vice-Pres., 3), (Local Sec., 4); Service Club 4; Honor Roll 2, 3, 4; Pep Club 4 (pianist); Poetry Reading 1, 3, 4; All-State Chorus 4; Girls' Solo 3; Girls' Trio 3.

Carl Willis

Carl Willis

Garden Club 2; Glee Club Band 1, 2, 3, 4; Science Club 2, 3, 4; Choir 3, 4; Track 2, 3; Latin Club 2; District Representative; Tenor Solo 4.

Marjorie Watson

Girl Reserve 2, 3, 4; Garden Club 2; Home Economics 1, 4; El Circulo Espanol 3, 4; Physical Ed. Club 1, 2, 4; Latin Club 2; Commercial Club 4; Choir 4; Glee Club 2, 3, 4.

Billy Price

Football 2, 3, 4; Basketball 4; Track 2; Latin Club 2; El Circulo Espanol 4; Science Club 3; Garden Club 2; Class Play, Manager 3, 4; Commercial Club 3; Kentucky "All Star" football game "39".

Billy Price

THE PARISIAN

Joanna Maher
Joanna Maher

Latin Club 2, 3, 4; Le Cercle Francais 2, 3, 4; Choir 3, 4; Glee Club 2, 3, 4; Home Ec. Club 1; French Award 2, 3; Orange and Black 1; Treasurer of Sophomore Class; Parisian Circle 4; Beta Club 3, 4; Honor Roll 1, 2, 3, 4; All-State-Chorus 4; Girl Reserves 2, 3, 4; Commercial Club 3; Music Contest 3, 4.



Billy Thompson

Latin Club 2, 3; Football 2, 3, 4; French Club 3, 4 (Treasurer, 4); Commercial Club 4; Class Play 1, 2; Basketball Manager, 3, 4; Science Club 2; Annual Staff 4; Honor Roll 3, 4; Rotarian Athletic-Scholastic Cup 4; Basketball 1; Track 2, 3.



Clarence Frye

Garden Club 2; Science Club 3; Commercial Club 3, 4; Glee Club 1, 2, 3; All State Chorus 2, 3; Choir 2, 3; District Quartet Representative 3; Interscholastic Music League 2; Mixed Chorus 2, 3.



Hattie Belle Skillman
Hattie Belle Skillman

Home Economics Club 1; Girls' Glee Club 2, 3; Girl Reserves 2, 3, 4; Physical Education 1, 2, 4; Garden Club 2; Latin Club 1, 2; Junior Chorus 1; Commercial Club 3, 4; El Circulo Espanol 3, 4.



Esta Lorrain Mullikin

Home Ec. Club 3; Girls' Club 3; Physical Ed. 4; Commercial Club 3, 4; Girl Reserves 3, 4; El Circulo Espanol 4; Chapel Choir 4; Oratory 3; Radio 3; Music 4; Spanish 4; Annual (Collector).



Ray Hatton

Glee Club 2, 3, 4; Annual Staff 4 (Sports Editor); Choir 3, 4; Garden Club 2; Science Club 3 (District Representative); Tenor Solo, 4 (District Representative); Septet 4; Track 4; School Sports Reporter 4; Choir 4 (Manager).



Ray Hatton

Carl Hopkins

Choir 3, 4; Glee Club 2, 3, 4; Garden Club 2; Latin Club 1, 2; Commercial Club 3; Science Club 3.



Helen Weber *Helen Weber*

Glee Club 2, 3, 4; Latin Club 1, 2; Girl Reserve 2, 3, 4; Garden Club 2; Commercial 3, 4; Physical Education 1, 2, 4; Poetry Reading 2; Home Ec. 1, 4; Annual Staff 4.



Carl Hopkins
"40"

THE PARISIAN

Nadine Baird

Latin Club 2; Home Ec. Club 1; Glee Club 1, 2, 3, 4; Commercial Club 3, 4; Girl Reserve 2, 3, 4, (Co-President) 4; Annual Staff 4 (Assistant Editor); Garden Club 2; Science Club 3; Class Play 1, 2, 3; Choir 2, 3, 4; Band 4 (Sponsor); Debating Club 3, 4; National Forensic League 4; Pep Club 1, 2, 3, 4; Poetry Reading 2; All-State Chorus 4; Quartet; Trio; Septet 4; Solo; Magazine Campaign Captain.



Hazel Lyons Hazel Lyons

Orange and Black 3 years; Parisian Circle 2, 3, 4; Glee Club 2, 3, 4; Latin Club 2, 3, 4, (President) 4; Class Play 1, 2, 3; Girl Reserves 2, 3, 4, (Vice-President) 3, (Secretary) 4; History Award 1, 3; Annual Staff 4; Home Ec. 1; Beta Club 3, 4; Service Club 4; Garden Club 2; Physical Ed. 1, 2, 4; D. A. R. Good Citizenship Award 4; Poetry Reading 1; Honor Roll 1, 2, 3, 4; Secretary Freshman Class.

Frances Sellers Frances Sellers

Commercial Club 2, 3, 4; Girl Reserve 2, 3, 4; Annual Staff 4; French Club 3, 4; Choir 2, 3, 4; Poetry Reading 3; Glee Club 2, 3, 4; Solo; Trio 3; Quartet; Septette 4 (District Rep.); Orchestra 2, 3; Garden Club 2.



Clay Roseberry

Latin Club 2, 3; Boys' Glee Club 1, 2, 3; Annual Staff 4; Science Club 3 (Vice-President); Le Circle Francais 3, 4; Class Play 2; Basketball 3; Football 2, 3, 4; Track 2, 3, 4.

Howard McCollum Howard McCollum

Beattyville High School 1, 2, 3; Hi-Y Club 1, 2, 3; Public Discussion Club 1; Journalism Club 1, 3; Basketball 3; Paris High School (Senior Year); Latin Club 4.



Marjorie Aline Argo

Home Economics Club 1, 3, 4; Latin Club 2; Garden Club 2; Girl Reserve 2, 3, 4; Commercial Club 3; Physical Education 1.

Anne Doty Anne Doty

Glee Club 4; Choir 4; Commercial Club 4; Girl Reserve 4; Solo 4. Came from Bourbon County High in Senior Year.



J. C. Watson

Latin Club 2; Boys' Glee Club 2, 3, 4; Commercial Club 3; Garden Club 2; Science Club 3; El Circulo Espanol 4.

THE PARISIAN

George Sidney Tate

Orange and Black 1; Parisian Circle 2, 3, 4; Class Pres. 1, 4; Beta Club 3, 4 (Vice-Pres., 4); Co-Editor Annual 4; Public Speaking 3; Stage Manager 3; Latin Club 1, 2; Science Club 3; Commercial Club 3; Garden Club 2, Pres; Glee Club 2, 3, 4; Choir 3, 4; All State Chorus 4; Solo 4; Honor Roll 1, 2, 3, 4; Quartet 3, 4.



Sally Kelly

Home Economics 4; Physical Education 1, 2; Garden Club 2; Latin 1, 2; Commercial Club 3, 4; Annual Staff.



Marion Snell

Latin Club 2 (Vice-Pres., 2); Glee Club 2; Commercial Club 3, 4; Garden Club 2; Science Club 3; Class Pres. 2; Orange and Black 1; Beta Club 3, 4; Service Club 4; Parisian Circle 4; Honor Roll 1, 2, 3, 4; History Award 3 (Tied for first place); Good Citizenship Award 1; Annual Staff 4; Poetry Reading 1.

Marion Snell



James B. Steele

Latin Club 2; Science Club 3; Commercial Club 4; Garden 2; Basketball 4; Football 2, 3, 4; Track 2, 3, 4.



Mary Nichols

Mary Nichols

Latin Club 2, 3 (President, 2); Glee Club 2, 3, 4; Physical Education 1, 2; Commercial Club 3; Girl Reserves 2, 3, 4; Assistant Editor Annual 4; Garden Club 2; Class Play 1; Le Cercle Francais 3, 4 (Secretary, 4); Class Vice-President 1; Honor Roll 1, 2, 3, 4; Beta Club 3, 4 (President, 4); Debating Club 3, 4 (Secretary, 4); National Forensic League 3, 4.



Archie Crump

Commercial Club 3, 4; Science Club 4; Parisian Circle 3, 4; Honor Roll 2.



Gene Barr

Orange and Black 1; History Award 1; Winner State and Local National Defense essay contest 1; Glee Club 2, 3; Girl Reserves 2, 3, 4; Commercial Club 3; Latin Club 2, 3, 4; Parisian Club 2, 3; Service Club 4; Beta Club 3, 4; Physical Education 1, 2, 4; Home Economics 1; Annual Club 3; Honor Roll 1, 2, 3, 4.

Gene Barr



Hazel Williams

Home Ec. 1; Girl Reserve 2, 3, 4; Garden Club 2; El Circulo Espanol 3, 4; Latin Club 2; Commercial Club 3, 4.

THE PARISIAN

Betsy Cobb Glass

Latin Club 2, 3, 4; Home Ec. Club 1; Girls' Glee Club 2, 3, 4; Physical Ed. 1, 2; Commercial Club 4; Annual Staff 4; Girl Reserves 2, 3, 4; Le Cercle Francais 3, 4; Class Play 1, 2, 3; Class Officer 4 (Treas.) Orange and Black 3 yrs.; Beta Club 3, 4 (Treas.) 4; Service Club 4; Honor Roll 1, 2, 3, 4; Poetry Reading 1.



Marion Burton

Latin Club 2; Commercial Club 3; Garden Club 2; Science Club 3; Le Cercle Francais 3.



Maxey Swinford

Home Ec. Club 3, 4; Latin Club 2; Commercial Club 3, 4; Physical Club 1, 2; Girl Reserves 2, 3, 4; Glee Club 2; Science Club 1, 2, 4.



Justine Gifford

Home Ec. 1, 3, 4; Physical Ed. 1, 2, 4; Glee Club 2; Commercial Club 3, 4; Garden Club 2; Latin Club 2; Girl Reserve 2, 3, 4.



Lorraine Feedback

Lorraine Feedback

Latin Club 2, (President) 2; Home Economics 1; Glee Club 2, 3; Physical Ed. 1, 2, 4, (Manager) 2; Commercial Club 3, 4; Girl Reserves 2, 3, 4; Annual Staff 4; Garden Club 2; Beta Club 3, 4; Service Club 4; Honor Roll 1, 2, 3, 4; Poetry Reading 1; Class Officer 3, Treasurer of Junior Class.



Dorothy Ashcraft

Commercial Club 3, 4; Latin Club 2; Garden Club 2; Physical Club 1, 2; Girl Reserves 2, 3, 4; Home Ec. Club 4.



Arthur Purvis

Arthur Purvis

Glee Club 2, 3, 4; Commercial Club 4; Vocational 2, 3; French Club 3, 4; Public Discussion 3; Solo 3.



Mabel Fudold

Latin Club 1, 2, 3, 4; Garden Club 2; Science Club 3; Honor Roll 2, 4; Girl Reserves 2, 3, 4.

mabel fudold

THE PARISIAN

Billy Young

Latin Club 2; Commercial Club 3; Annual Staff (Business Manager, Sports) 4; Science Club 3; Garden Club 2; Le Cercle Francais 3, 4; Class Play 1, 2, 3; Debating Club 3, 4; National Forensic League (State) Extemporaneous Speaking 4; (District) Public Discussion 2; State Junior High Public Discussion 1; Pep Club 2, 3; Treasurer of Freshman Class; Basketball 1; Glee Club 1; Sports Reporter for Paper; Public Address System Announcer; Magazine Campaign Captain.



Martha Thompson

Latin Club 2; Home Ec. Club 1; Girls' Glee Club 2, 3, 4; Physical Ed. 1, 2; Commercial Club 3, 4; Girl Reserves 2, 3, 4; Annual Staff 4; Garden Club 2; Le Cercle Francais 3, 4; Class Play 3; Class Officer 3.



Paul Kenton

Latin Club 2; Commercial Club 3, 4; Vice-Pres. Commercial Club 4; Glee Club 4; Drum Major 1, 2, 3, 4; Basketball 3, 4; Science Club 2, 3, 4.



Mary Elizabeth Mann

Home Ec. (Vice-President) 1, (Secretary-Treas.) 3, (President) 4; Physical Education 1, 4; Commercial Club 3, 4; Glee Club 2, 3, 4; Choir 4; Garden Club 2; Latin Club 2; Girl Reserve 2, 3, 4; Orchestra 2; Trio 3.



Jean Royse
Jean Royse

Home Ec. Club 1; Girl Reserves 2, 3, 4; Commercial Club 3; Latin Club 2, 3, 4; Beta Club 3, 4; Debating Club 3, 4; Chapel Choir 3, 4; Glee Club 2, 3, 4; Band 1, 2; Le Cercle Francais 2, 3, 4, (Secretary) 3; Orange and Black ident 3; Annual Staff 4; Honor Roll 1, 2, 3, 4; All-State Chorus 4; National Forensic League 3, 4, (President) 4; Music Contest 3, 4; History Award 3; French Award 2, 3; Physical Ed. Club 1; Mixed Chorus 3, 4.



Rex Lyons

Latin Club 2; Glee Club 3, 4; Commercial Club 3, 4; Class Play 1, 2; Football 2, 3, 4; Track 2, 4; Choir 2, 3, 4; Band 1; Quartet 4; Solo 4; Septet 4; All-State Chorus 4.



Ann Richmond

Garden Club 2; Glee Club 2, 3, 4; Latin Club 2, 3, 4; Choir 2, 3, 4; Home Ec. Club 4; Physical Ed. Club 1, 2; Class Play 2, 3; Trio; Solo 3; Girl Reserves 2, 3, 4.



Joe Goodman

Latin Club 2; Glee Club 3, 4; Commercial Club 3, 4; Science Club 3; El Circulo Espanol 3; Track 2; Basketball 2, 3, 4, Captain 4; Football 2, 3, 4; Quartet 4 (District Representative); Garden Club 2.



THE PARISIAN

Withers Davis

Latin Club 2, 3, 4; Glee Club 2, 3, 4; Choir 3, 4; Pep Club, 4; Oratory Representative 3, 4 (3rd in District, 3, 4); Class Play 1, 2, 3; Commercial Club 4; Science Club 3; Debating 4; Garden Club 2; National Forensic League 4; Honor Roll 2, 3, 4; All State Chorus 4; Representative in Music Contest 3; Annual Staff, Art Editor 4; Male Quartet 2, 3, 4; Mixed Quartet 3, 4; Solo 3; Septet 4; Radio Speaking 3, 4; Art Club 1, 2, 3, 4.



June Doyle

Service Club 4; Latin Club 2, 3, 4; El Circulo Espanol 3, 4 (President, 4); Pep Club 4; Girl Reserves 2, 3, 4 (Co-President, 4); Choir 4; Commercial Club 3; Physical Education 1, 2, 3; Junior Chorus 1; Home Economics Club 1; Glee Club 2, 3, 4; Entered Music Contest 3, 4; Honor Roll; Garden Club 2; Class Secretary 3; Annual Staff 4.



Margaret Anne Tune

Junior Chorus 1; Home Ec. Club 1; Commercial Club 3, 4; Latin Club 1, 2, 3, 4; Glee Club 2; Garden Club.



Kenneth Kiser

Science Club 3; Garden Club 2; Glee Club 2, 3, 4; Class Play 2, 3; Track 2, 3; Football 1; Annual Staff 4.



J. D. King

J. D. King

Latin Club 2; Commercial Club 3, 4; Garden Club 2; Science Club 3; Boys' Glee Club 3, 4; Choir 3, 4; District Soloist 3; All State Chorus 3; Representative in State Music Contest 3, 4; Entered Music Contest 3, 4; Track 2, 3, 4; Football 1, 2.



Mary Varnon Gibson

Latin Club 2; Home Economics Club 1; Glee Club 2, 3, 4; Physical Education 1, 2, 3; Commercial Club 3, 4; Girl Reserve 2, 3, 4; Annual Staff 4; Garden Club 2; Science Club 4; Le Circle Francais 3, 4; Class Play 3; Band 1.



Adele Hazelrigg

El Circulo Espanol 3, 4; Commercial Club 3; Glee Club 2, 3; Junior Chorus 1; Girl Reserves 2, 3, 4; Physical Ed. 1, 2, 4; Captain and Manager 2; Annual Staff Collector; Garden Club 2; Latin Club 2; Cheer Leader 1.



D. C. Parrish

Basketball 3, 4; Football 2, 3, 4; Track 2, 3, 4; Glee Club 4; Commercial Club 4 (President); Spanish Club 4 (Vice President); Class Play 1; Science Club 3.



D. Parrish

THE PARISIAN

THE SENIORS HAVE YET TO LEARN

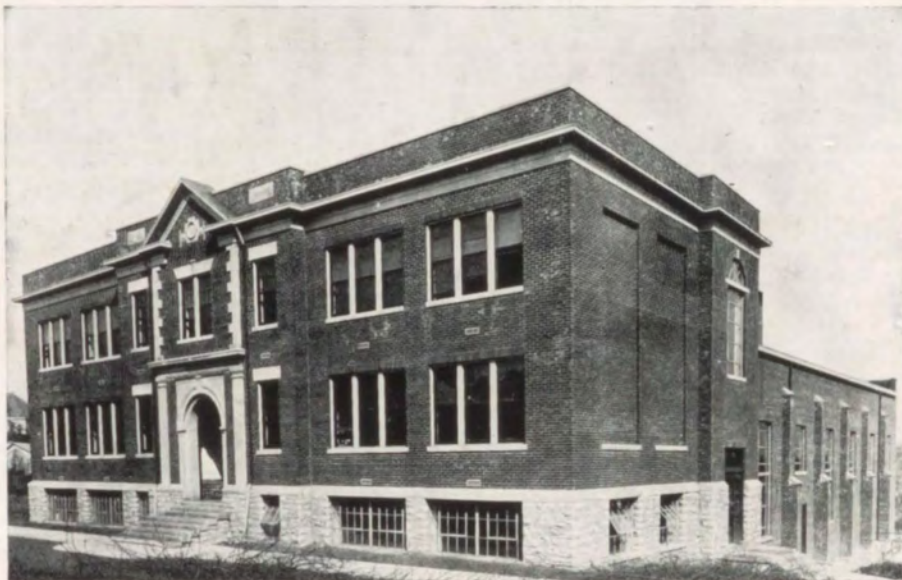
This world is so big, and yet so small
So far away, yet so near
With opportunities for each and all
Some with a risk and fear.
This world is old, yet new it seems
To every new born babe
Their chance is coming from great dreams
As a human from out of a cave.

We sit and whine from day to day
For more and more to do
Yet if we would work, instead of play
The sky would seem a brighter blue.
Don't sit and wait for luck to come
Go out and find a place
This old world has a seat for some
Of those who join the race.

Words express what we may feel
So be careful when you speak
Let not your thoughts, in haste, reveal
The unpleasant words you seek.
Let good and honest words be your guide
Upon good dreams you make
But hated words will you please hide,
Just for your good friends' sake.

Yet we love this world of trials
This world of friend and foe
As a fireplace made of tile
Loves it's ever lasting glow.
Yet there are many, rich and poor
Many good and bad,
Many who will go on before
And leave the others sad.

Sally Kelly



SENIOR HIGH SCHOOL BUILDING



A TRIBUTE TO MRS. FRANCES BUTLER COLLIER

Our senior year was saddened by the sudden departure of our beloved Mrs. Collier. Not only did we respect her as a fine teacher, but we loved her for the high standards she stood for, and encouraged us to develop. Her interest, loyalty, willingness and faithfulness to us will always remain an inspiration to the present Senior Class and to the future seniors who follow us.

Not enough can be told of Mrs. Collier's great work in the Paris High School. For nearly thirty-five years she was an ever-present contributor to the welfare of her students. We were fortunate in knowing her and in being under her guidance. Her life was a goal for us to follow—so that it might be said of us, as is said of her, that we did our work nobly and well.

As Dr. Kirkpatrick said, "The teachers and the students have lost one of their very best friends, but they have a wealth of blessed memories left them as a heritage that cannot be taken away, and as the years come and go their appreciation for Mrs. Collier will be greatly increased."

Junior Class

THE PARISIAN



Mary Toohey

Patty Marsh

JUNIOR CLASS ROLL

Jack Adair
Lorine Argo
Florence Barnett
Marjorie Bell
Bobbie Biddle
Daisy M. Blackstone
Gene Bowen
William A. Buckner
Louise Burris
Wilma Gene Cannon
Mildred Case
Harriet Cavanaugh
Molly Clayton
Margaret Clough
Nellie Crump
Frank Shirley Dalzell

Dorcas Dawes
Betty Jo Denton
Lillian Dodson
Christine Edgington
Lois Farmer
Clarence Forbes
Lida Gardner
Alice Grinnell
John Trimble Harris
Evelyn Himes
Mabel Humphries
Robert Insko
David Isgrig
Henry Keller
Francis Kennedy

Matt Lair
Shirley Leder
Sally MacMillan
Margaret Marshall
Patty Marsh
Anne E. McClanahan
Edith McClanahan
Douglas McCollum
Frances Mitchell
Nick Nicholas
Peggy Oliver
Elgin Parker
Jane Parris
Oscar Poe
Frazier Richie

Vernon Roe
Phyllis Smith
Johanna Smits
J. W. Soper
Irene Spivey
Eleanor Sprakes
Marida Stewart
Margaret Toohey
Mary Toohey
Elwood Wagoner
Anna Belle Wassom
Jack Welsh
Douglas Williams
Sarah Mildred Wills
Barbara Winters



Johnny Harris

JUNIOR CLASS OFFICERS

President.....	Francis Kennedy
Vice-President.....	Anna Belle Wassom
Secretary.....	Alice Grinnell
Treasurer.....	John Trimble Harris

Alice Grinnell

Gene "Beau" Bowen

Frances Mitchell

Margaret Marshall

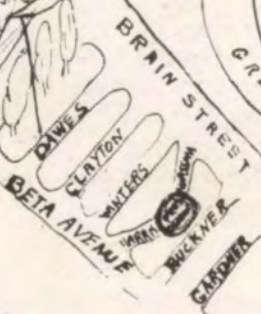
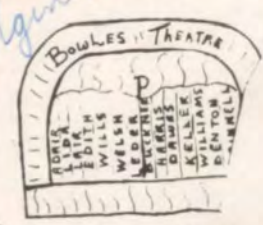
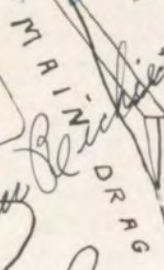
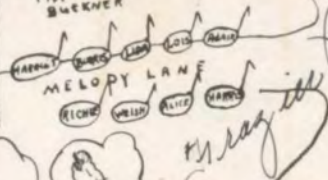
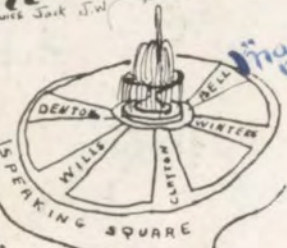
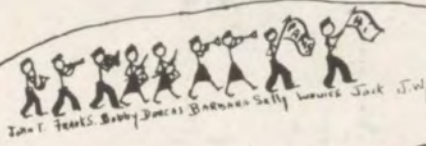
J.W. Soper
Clarence Forbes

Max "Buck" Larr

Johanna Smith

JUNIOR CITY

David J. Doggins



ACTION AVENUE

B.B. • L.F. • F.M. • N.N.

Margaret Clough
Mary Ellen
Jack Adams
Wilma Clark
Cannon

Dorcas Davies
Francis Kennedy

Phyllis Smith

Peggy Oliver "Pis"
Sara Mildred Wills
Anne Elizabeth
McClanahan

Drew Pivey
Mildred Case
Betty Jo Denton
Louise Burris
Christine Edgington

Evelyn Kerner

Helenie Barnett
"H."

Harriet W. Wason

Edward W. Rogers

Anna Belle
Wasson

THE PARISIAN

THE SOPHOMORE CLASS



SOPHOMORE CLASS OFFICERS

President.....	John Gravitt
Vice-President.....	Gloria Thompson
Secretary.....	Faith Hall Phillips
Treasurer.....	Elizabeth Ferguson

ACTIVITIES

Debating Team—Ann Dudley Carr, Billy Joe Johnstone.

Public Speaking—Ann Dudley Carr, Hollis Dean Dennis, Margaret Farmer, Audrey Kiser, Leonard Cohan, Billy Joe Johnstone, Faith Hall Phillips.

Music Representatives—Billy Joe Johnstone, Faith Hall Phillips, Wallace Bowles, Jesse Lowe, Mary Ruth Cobb, John Gravitt, Gay Bramel, Calvin Smart, Madeline Deering, Helen Davis.

Other Music Contestants—Stanley Barnett, Leonard Cohan, Audrey Kiser, Jimmy Hamilton, Evin Mann, Bobby Ballard, Forrest Bobbitt, Leland Brannon, Mace McCord.

Fotoball—Hamlet Collier, John Glover, Bobby Ballard, Forrest Bobbitt, Wallace Bowles, Stanley Barnett, Leonard Cohan, Jimmy Hamilton.

Basketball—Jack McKenzie, Mike Sosby, Stanley Barnett, Hamlet Collier, Bobby Ballard.

S is for Sophomore, whose nickname is "Dumb",
O is for order, of which we have none.
P is for patience, which teachers have lost,
H is for habits, which are a great cost.
O is for opportunity—to knock at our door,
M is for manners, of which we need more.
O is for opinion, which is as light as a feather,
R is for our rooms, which all stick together.
E is for energy, which we all display,
S is for Sophomores—not a bad class, I'd say.

F. H. P.

THE PARISIAN



SOPHOMORE CLASS ROLL

John Argo
Joanna Ashcraft
Martha B. Baldwin
Bobby Ballard
Stanley Barnett
Helen Biddle
Forrest Bobbitt
Wallace Bowles
Gay Bramel
Betty Jean Brannon
Leland Brannon
Coleman Burke
Ralph Burton
Ann Dudley Carr
Vivian Chisholm
Janice Clotfelter

Mary Ruth Cobb
Leonard Cohan
Raymond Cohan
Hamlet Collier
Joe E. Curtis
Billie Dale
Helen Davis
Madeline Deering
Hollis Dean Dennis
Florence Denny
Margaret Farmer
Elizabeth Ferguson
Betty Jo Flora
John Glover
John Gravitt
Anna Mae Gross

Louise Hall
Jimmie Hamilton
Mary F. Harney
Billy Joe Johnstone
Louis Kidwell
Audrey Kiser
Maude Lawrence
Jesse Lowe
Evin Mann
Mace McCord
Harold McKenzie
Allen McPheeters
Irene Morgan
Ann Parris
Faith Hall Phillips
Marion C. Prather

Emma Rankin
Garnett Rankin
John Rankin
Lida Rogers
Nathan Shaw
Calvin Smart
Pauline Smoot
Mike Sosby
J. B. Sparks
Mary K. Stanfield
Gloria Thompson
Frank Wassom
Edith Williams
Margaret Woods
Nellie Worthington

WHEN AND IF WE BECOME SENIORS

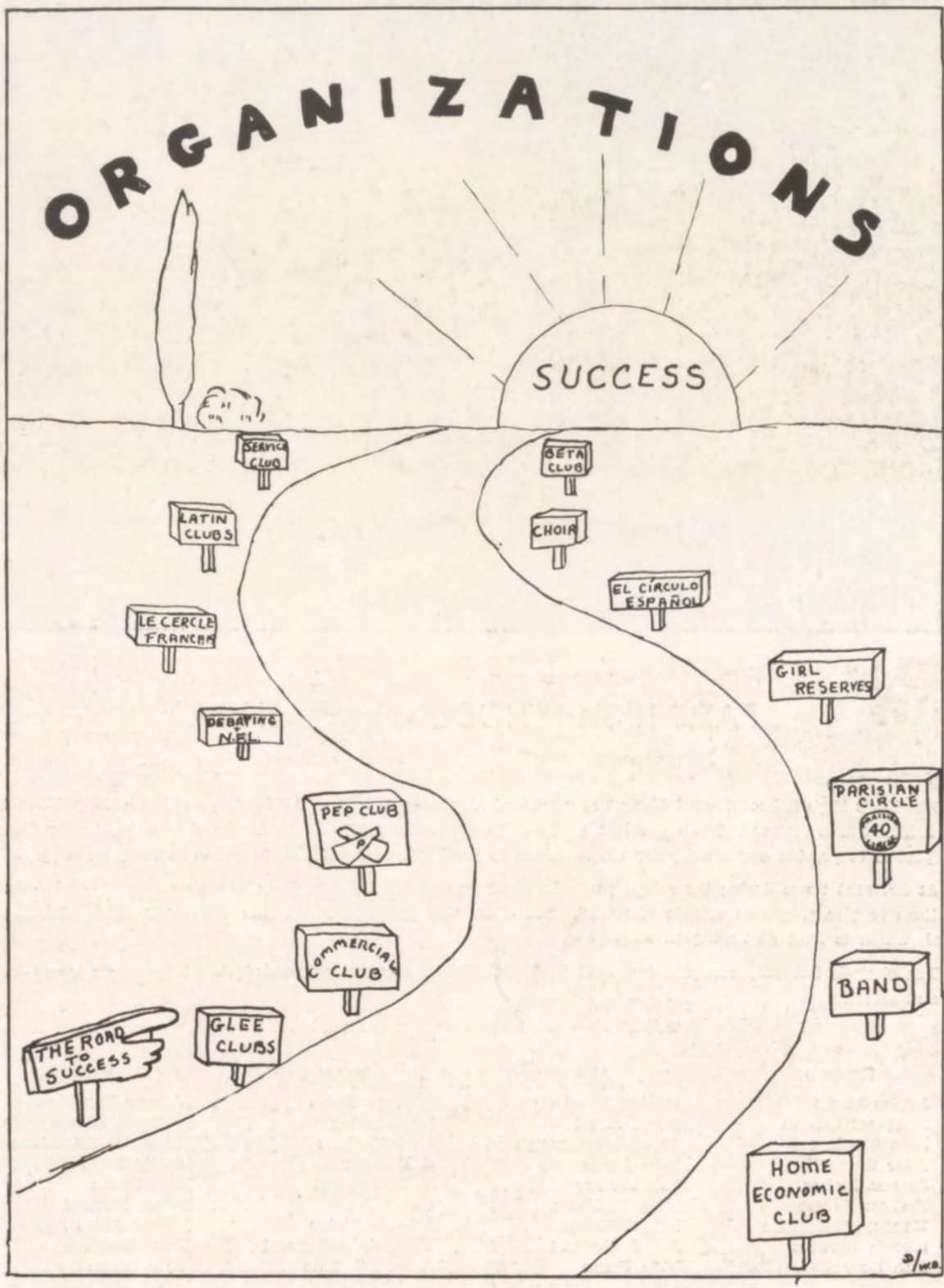
Billie Dale will still be dropping books.
Leonard Cohan will continue to ask intelligent (???) questions.
Betty Jean Brannon will be swinging any and everything.
Elizabeth Ferguson will continue to giggle.
Hamlet Collier will still be "Romeo" instead of "Hamlet".
Faith Hall will still be coming in late on MONDAY morning.
Nathan Shaw will continue to draw all over his homework.
Gloria Thompson will still be "yelling her head off" at rallies.
John Gravitt will still be "courting up a storm".
Ann Dudley Carr will continue to race her motor.
Martha Boone Baldwin will still be a blond beauty of the class.



NEW SOUTH SIDE SCHOOL



NEW GYMNASIUM





PARIS HIGH SCHOOL CHAPEL CHOIR

The Paris High School Chapel Choir was organized November 1, 1935 under the supervision of Miss Ellen Blanding and Miss Susan Howard. The choir is a group of mixed voices picked from the Boys' and Girls' Glee Clubs and its purpose is to provide opportunity for the members to receive the very best instructions in vocal training.

At different times during the school year, the choir receives invitations from churches, clubs and other organizations to give programs outside of school. The choir also participates in the Kentucky High School Music Festival, which is held at Lexington each year.

The choir is not only recognized around Paris but it has acquired acknowledgement by music lovers in other cities and states.

Soprano

Louise Burris
Margaret Clough
Lida Gardner
Alice Grinnell
Joanna Maher
Frances Sellers
Kenney Shropshire
Marida Stewart
Ann Doty

Alto

Nadine Baird
Gay Bramel
Harriet Cavanaugh
June Doyle
Lois Farmer
Mary E. Mann
Esta Mullikin
Ann Richmond
Jean Royse
Marjorie Watson

Tenor

Withers Davis
Ray Hatton
Carl Hopkins
J. D. King
C. R. Parrent
Oscar Poe
Frazier Richie
Edward Sutherland
George S. Tate
Carl Willis

Bass

Jimmy Hamilton
John T. Harris
Billy Joe Johnstone
Jessie Lowe
Rex Lyons
Mace McCord
Alfred Shire
Jack Welsh
Evin Mann

THE PARISIAN

BOYS' GLEE CLUB

To the boys willing to work hard is extended, each year, the offer to join the Boys' Glee Club. They must be willing to learn, and to cooperate with the school, for it is through no other methods that Miss Blanding sends such excellent Glee Clubs to Lexington each year. Miss Blanding and Miss Howard, her superior accompanist, train these boys with a steadfast purpose in mind to attain the highest standard in chorus training they are able to achieve. The boys receive this training and retain it throughout their lives.

Jack Adair
Hamlet Collier, Jr.
Withers Davis
Joe Goodman
Ray Hatton
Carl Hopkins
Paul Kenton
J. D. King
Matt Lair
Nick Nicholas
D. C. Parrish
Jim Parrish
C. R. Parrent

Oscar Poe
Frazier Richie
Vernon Roe
Alfred Shire
J. W. Soper
Edward Sutherland
George Sidney Tate
J. C. Watson
Jack Welsh
Carl Willis
Kenneth Kiser
Henry Keller
John Argo

Coleman Burke
Bobby Ballard
Stanley Barnett
Forrest Bobbitt
Wallace Bowles
Leland Brannon
Raymond Cohan
Jimmy Hamilton
Billy Joe Johnstone
Jesse Lowe
Rex Lyons
Evin Mann

Mace McCord
Jack McKenzie
Allen McPheeters
Marion C. Prather
Arthur Purvis
Nathan Shaw
Mike Sosby
Calvin Smart
Joe Curtis
John Glover
John Rankin
Douglas Williams

GIRLS' GLEE CLUB

Due to the excellent supervision of Miss Ellen Blanding, the Girls' Glee Club has won outstanding recognition in the various contests in which they have participated. Students are not compelled to join the group, but those belonging derive much entertainment and a deeper appreciation for music. The vast amount of musical knowledge that Miss Blanding imparts to these girls, goes with them through life. Much credit must be given to Miss Howard, our accompanist, who never fails in any way. To Miss Blanding and to Miss Howard we give praise for the excellent work they produce.

Joanna Ashcraft
Martha B. Baldwin
Helen Biddle
Gay Bramel
Betty Jean Brannon
Anne Dudley Carr
Vivian Chisholm
Janice Clotfelter
Mary Ruth Cobb
Billy Dale
Helen Davis
Madeline Deering
Hollis Dean Dennis
Florence Denny
Margaret Farmer

Elizabeth Ferguson
Betty Jo Flora
Justine Gifford
Anna Mae Gross
Mary Frances Harney
Audrey Kiser
Irene Morgan
Anne Parris
Faith Hall Phillips
Lida Rogers
Pauline Smoot
Gloria Thompson
Edith Williams
Marjorie Woods
Nellie Worthington

Aline Argo
Nadine Baird
Florence Barnett
Daisy Mae Blackstone
Harriet Cavanaugh
Molly Clayton
Margaret Clough
Dorcas Dawes
Betty Jo Denton
Lillian Dodson
Anne Doty
June Doyle
Lois Farmer
Lida Gardner
Alice Grinnell

Evelyn Himes
Shirley Leder
Hazel Lyons
Joanna Maher
Sally MacMillian
Frances Mitchell
Ann Richmond
Jean Royse
Frances Sellers
Marida Stewart
Margaret Toohey
Marjorie Watson
Sarah Mildred Wills
Kenney Shropshire
Helen Weber

ALL-STATE CHORUS

Each year, from all over Kentucky, the schools are invited to send a certain number of students, representing their music department, to Lexington to participate in the All-State Chorus. The finest high school voices of Kentucky are blended in one magnificent chorus. It is an event looked forward to from year to year.

YEAR 1940

Soprano
Joanna Maher
Kenney Shropshire

Alto
Jean Royse
Nadine Baird

Tenor
Carl Willis
Wither Davis
George S. Tate
C. R. Parrent
Roy Hatton
Carl Hopkins
Edward Sutherland

Bass
Rex Lyons
Alfred Shire
Jack Welsh

THE PARISIAN



PARISIAN CIRCLE AND PEP CLUB

Joanna Maher
Gene Barr
Hazel Lyons

Marion Snell
John Trimble Harris
Archie Crump
George Sidney Tate

Nadine Baird
Kenney Shropshire
Gloria Thompson
June Doyle

Betty Jo Denton
Withers Davis
John Gravitt

The Parisian Circle and Pep Club have been recognized for many years as two of the most active and worthwhile organizations in the Senior High School. The Pep Club is composed of the Senior members of the Parisian Circle and the cheerleaders. Its duty is to put pep and enthusiasm into both players and student body and to act as a committee on hospitality to the visitors of our school.

The Parisian Circle is made up of two sophomores, four Juniors, and six Seniors. Four of these served an apprenticeship and became active members when they were Seniors. Two members were elected by their class as Sophomores, two as Juniors and at the beginning of the Senior year the last two were selected. The members are elected because of the time and the unselfish cooperation they devote to uphold and promote the good name of the school. The present Sophomore members are Faith Hall Phillips and John Gravitt, and the present Junior members are Bill Buckner, Betty Jo Denton, John Trimble Harris, and Anna Belle Wassom.

THE PARISIAN



THE SERVICE CLUB

On March 5, 1940 eight members of the Senior Class received invitations to become members of the Service Club. The object of this club is to serve in all ways possible for the benefit of the school.

Eligibility is gained by grades in academic subjects and because of the students' willingness at all times to cooperate.

The members of the Service Club are to dedicate a portion of their time each day to the school by performing duties such as they may be.

The major accomplishment of the club this year was the publishing of the handbook of Paris High School. Every member had an equal part in it. We feel that it was a success and a stepping stone in the history of the club.

SERVICE CLUB MEMBERS

Gene Barr
June Doyle

Lorraine Feeback
Betsy Cobb Glass

Hazel Lyons
Marion Snell

Alfred Shire
Kenney Shropshire

THE PARISIAN



THE BETA CLUB

To provide a definite recognition of real scholarship, the National Beta Club was installed in the Paris High School February 21, 1939. It requires that a Junior or Senior have an average grade between an "A" and a "B" and that the student having the grades must have a good attitude, and must show qualities of unselfishness, loyalty and leadership.

During the short existence, the Paris Beta Club has received much recognition both locally and throughout the state.

At the State Convention Kenney Shropshire, State Vice-President, presided at one of the meetings. Norma Mae Mastin, Class 1939, was asked to give an address from the alumnae.

For the year 1940-41 Betty Jo Denton and John Trimble Harris were elected State President and Secretary, respectively.

At home the Beta Club enjoys both social gatherings and business meetings. They enjoyed a picnic on the Nichols' farm. Soon afterwards they presented one of the most instructive programs on "Study", the important factor in our school life.

An impressive program was that of the installation of new members in September. At that time seven new members were inducted during a serious ceremony to add to the eleven already members. Miss Gilbert Lavin is the club sponsor.

Seniors

Gene Barr
Betsy Cobb Glass
Lorraine Feedback
Hazel Lyons
Joanna Maher
Mary Nichols
Jean Royse
Marion Snell
Alfred Shire
Kenney Shropshire
George Sidney Tate

Juniors

William Buckner
Molly Clayton
Dorcas Dawes
Betty Jo Denton
Lida Gardner
John Trimble Harris
Anna Belle Wassom
Barbara Winters

THE PARISIAN

HOME ECONOMICS CLUB

Sponsor.....Mrs. Dan Peed

OFFICERS

President Mary Elizabeth Mann
Vice-President Nora Sherlock
Secretary and Treasurer..... Sally Kelly

All the members of the Home Economics Department are members of the Club. The Home Economics Club holds its meetings at irregular intervals during the school year. The members are often called upon to assist in entertaining and serving at different social functions.

This department has had several delightful tea dances during this school year.

ROLL

Maxey Swinford
Louise Sanders
Noami Schnitzler
Nora Sherlock
Mildred Smart
Ruth Smith
Margaret Snell

Marjorie Watson
Clarice Williams
Helen Weber
Dorothy Ashcraft
Aline Argo
Lorraine Argo
Florence Barnett

Harriet Cavanaugh
Helen Campbell
Jane Dochenbrode
Justine Gifford
Mary Belle Howerton
Sally Kelly

Patty Marsh
Mary Elizabeth Mann
Elizabeth Marsh
Bobby Marshall
Joella Morton
Ann Richmond

COMMERCIAL CLUB

The Commercial Club is under the capable supervision of Mrs. W. V. Shaw. This club consists of approximately eighty students. To be a member, the student must take either bookkeeping, typing, or shorthand. The students in this club are able to aid Mrs. Shaw and the school with their knowledge of business. Many of the students were of great assistance in the preparation of the copy for the annual and were assisted by their supervisor.

This club has only one or two meetings each year. The first meeting this year was held in order to elect a president and a vice-president. The choice of the students was D. C. Parrish, president, and Paul Kenton, vice-president. There is only one purpose of this club and that is to help the underprivileged Kindergarten children at Christmas. The president provides for the program, the students select kindergarten children for whom they buy some gift.

JUNIOR-SENIOR LATIN CLUB

The Senior High Latin Club is one of the oldest in existence in the school. It seeks to preserve the classical tradition in a very modern system of education.

Officers elected for this year were: President, Hazel Lyons; Vice-President, Betty Jo Denton; Secretary-Treasurer, Bill Buckner.

Four members of this club were awarded prizes by Mr. Kirkpatrick for work done, showing how Latin authors have influenced both thought and form of modern literature. Winners were Kenney Shropshire, Alfred Shire, Molly Clayton, and Betty Jo Denton.

SOPHOMORE LATIN CLUB

President, Ann Parris; Vice-President, Billy Joe Johnstone; Secretary and Treasurer, Irene Morgan.

This club has devoted some time to adaptation of modern songs in Latin. Each semester Mr. Kirkpatrick offered prizes to students doing original work showing relation of Latin to present day uses. These prizes were won by Nathan Shaw and Lois Farmer.

THE PARISIAN

LE CERCLE FRANCAIS

At our first meeting of Le Cercle Francais officers were elected, these officers planned the initiation. The old members enjoyed the two days of initiation immensely, while the new members suffered through those two days of agony. However, the old members on the last day of the initiation became very generous and gave the new members a party. This party was a great success and everyone had an enjoyable time.

At Christmas time another meeting was held with the president presiding. There were stories of Christmas told in French and songs were sung in French. After a profitable and enjoyable meeting we had refreshments. During our social hour we worked a cross-word puzzle in French. Our French Club is rather large, there are twelve Seniors, twenty Juniors and nine Sophomores.

There have not been very many meetings, but every member of Le Cercle Francais feels that the club seeks to further acquaint every student of French with the social and political life, the customs and the literature of the French speaking people, and to create a friendlier attitude toward our neighbors in France. We feel this attitude is more important now than ever before because of their war. We also feel that French is one of the cultural languages of the world and thus by studying it we are able to become more cultured. Our club has carried out its aims. We have been aided in carrying them out through our sponsor, Miss Edith Monson.

OFFICERS OF LE CERCLE FRANCAIS

President,	Vice-President,	Secretary,	Treasurer,	Sponsor,
Kenney Shropshire	Billy Joe Johnstone	Mary Nichols	Billy Thompson	Miss Edith Monson

SPANISH CLUB

(EL CIRCULO ESPANOL)

Miss Edith Monson is the sponsor of the Spanish Club. The celebrations given by this club furnish one with a broader view of Spanish customs, government, and language. Each year the new members are given an initiation party, which is always one of the most enjoyable occasions of the school year. At Christmas time programs typical of Spain are presented. Through these celebrations one is given an opportunity to become better acquainted with his Spanish friends. The membership in this club seems to increase each year. The officers of the Spanish Club this year are:

President,	Vice-President,	Secretary,	Treasurer,
June Doyle	D. C. Parrish	Hazel Lyons	Matt Lair

THE PARISIAN

NATIONAL FORENSIC LEAGUE



The purpose of the National Forensic League is to emphasize the importance of speech in everyday life for everybody and to motivate the study and practice of the speech arts by high school students.

Certain standards are set for one to achieve a degree in this organization. For a degree of Merit, a student must have over twenty forensic points; for a degree in Honor, over fifty; for Excellence, over one hundred; and for the highest honor, that of Distinction, one hundred and fifty points are required.

Present holders of these degrees are:

Distinction	
Jane Clay Sutherland	1938
Elizabeth Grimes Chapman	1939
Catherine Kennedy	1939
Billy Young	1940

Excellence	
Billy Shire	1939
Alfred Shire	1940
Zerelda Noland	Coach

Merit	
Barbara Winters	1941
Faith Hall Phillips	1942
Margaret Farmer	1942

Honor	
Margaret Lowry Arnsperger	1939
Mary Ward	1939
Norma Mae Mastin	1939
Mary Nichols	1940
Nadine Baird	1940
Jean Royse	1940
Ann Wallace Horton	1933
Ann Dudley Carr	1942
Billy Joe Johnstone	1942
Withers Davis	1940

DEBATING

Under the excellent supervision of Miss Zerelda Noland, debating in the Paris High School has been a great success. Between the years of 1921 and 1939, Paris has been represented five times in the State Debate Tournament. The debate team of 1923 won the state contest and Paris placed second in 1923. This year's subject is "Resolved, that the Federal Government should own and operate the Railroads." The team is made up of Ann Dudley Carr, Barbara Winters, Nadine Baird, Mary Nichols, Billy Young, Alfred Shire, Billy Joe Johnstone and Withers Davis. This debate season has been a profitable one, climaxed by the District Debate Tournament in Lexington, March 18-19, in which Paris was the fourth team to remain in the tournament.

THE PARISIAN



SPEAKING CONTEST

The highlight of the Paris speaking contest was the winning of the cup given annually to the school having the highest rating in the district. Paris and Lafayette High School of Lexington tied for first place and each received a cup. Miss Monson and Mrs. Clara Boles were sponsors of the speaking contest.

LOCAL CONTEST WINNERS

Oratorical Declamation	Withers Davis
Interpretative Reading	Margaret Farmer
Extemporaneous Speaking	Billy Young
Radio Speaking	Margaret Farmer
Poetry Reading	Faith Hall Phillips
Public Discussion	Betty Jo Denton
Grade Discussion	Mary Helen Stone

DISTRICT CONTEST WINNERS

Extemporaneous Speaking	Billy Young—1st
Radio Speaking	Margaret Farmer—1st (tied)
Poetry Reading	Faith Hall Phillips—2nd
Interpretative Reading	Margaret Farmer—2nd
Oratorical Declamation	Withers Davis—3rd
Grade Discussion	Mary Helen Stone—3rd
Public Discussion	Betty Jo Denton—4th

STATE CONTEST WINNERS

Radio Speaking	Margaret Farmer—1st
Extemporaneous Speaking	Billy Young—2nd

ENTRANTS IN NATIONAL FORENSIC LEAGUE COMPETITION

Billy Young, extemporaneous speaking, and Margaret Farmer, radio speaking, represented Kentucky in the National Forensic League competition at Terre Haute, Ind., April 29-May 3.

THE PARISIAN



THE BAND

The Paris High School Band has always been an attractive activity of the High School Curriculum. This year the band was taken over by Mr. John A. Royse, a competent musician and an alumnus of Paris High School. The band is flourishing under the capable direction of Mr. Royse. The band has performed at numerous functions, among these were the District and Regional Basketball Tournaments. Every fan thoroughly enjoyed this added attraction.

The band offers training to young musicians who go far in developing their ability. Paul Kenton has been drum-major for six years.

MEMBERS OF PARIS HIGH SCHOOL BAND 1939-1940

Supervisor of Music	Miss Ellen Blanding
Director of Band	John A. Royse
Drum Majors	Paul Kenton, Billy Haggard
Sponsor	Miss Nadine Baird
Color Guards	Jack Welsh, Jack Adair, J. W. Soper

Cornets	Clarinets	Trombones	Baritones
1. Jesse Lowe	1. Helen Frances Davis	1. John Gravitt	1. Frank Shirley Dalzell, Jr.
2. Donald Smith	2. C. K. Cannon, Jr.	2. C. R. Parrent, Jr.	2. Harry Lowe
3. John Lee Roberts	3. Bobby Insko	3. Carl Willis	3. Russell Pulliam
4. Wright Smith	4. Milton Sheeler, Jr.	4. Jimmy Allen	
5. Calvin Smart	5. Alois Ruggles	Drums and Cymbals	Basses
6. Bill Phillips	6. Billy McConnell	1. Allen Irvin McPheeters	1. Billy Joe Johnstone
7. Louise Burris	7. Leland Brannon	2. Hollis Dean Dennis	2. Charles Langfels
8. Sally MacMillan	8. Wilma Wagoner	3. Rhodes Skillman	
9. Ussery Wilder, Jr.	9. Billy Turner	4. Faith Hall Phillips	Saxophones
10. H. R. Kenney, Jr.	10. Marie Arnold	5. Dorcas Dawes	1. John Trimble Harris
11. Joe Elden Botkin	French Horns	6. Barbara Winters	2. Billy Rice
12. C. R. Harris, Jr.	1. Leonard Cohan	7. Edward Burke Williams	3. Eillie Dale
13. Ray Mann	2. Gloria Thompson	8. Jack Clay	

Contestants who participated in the Regional Music Festival at Richmond and rating received:

Trumpet	Jesse James Lowe	Good
Clarinet	Helen Frances Davis	Good
Baton Twirling	Paul Kenton	Good
B-flat Tenor Sax	John Trimble Harris	Superior
Tuba	Billy Joe Johnstone	Excellent
Miscellaneous Brass Ensemble		Good

The members of the ensemble were: 1st Cornet, Jesse James Lowe; 2nd Cornet, Donald Smith; 3rd Cornet, Calvin Booth Smart; Trombone, John Franklin Gravitt; Tuba, Billy Joe Johnstone.



GIRL RESERVES

OFFICERS

Co-Presidents	June Doyle and Nadine Baird
Vice-President	Peggy Oliver
Secretary	Hazel Lyons
Treasurer	Frances Mitchell

The Girl Reserves Organization in the Senior High School is composed of all the girls in the Sophomore, Junior and Senior Classes. The purpose of the fine group is to lift up the ideals of the girls so they as better women can help the school and the community.

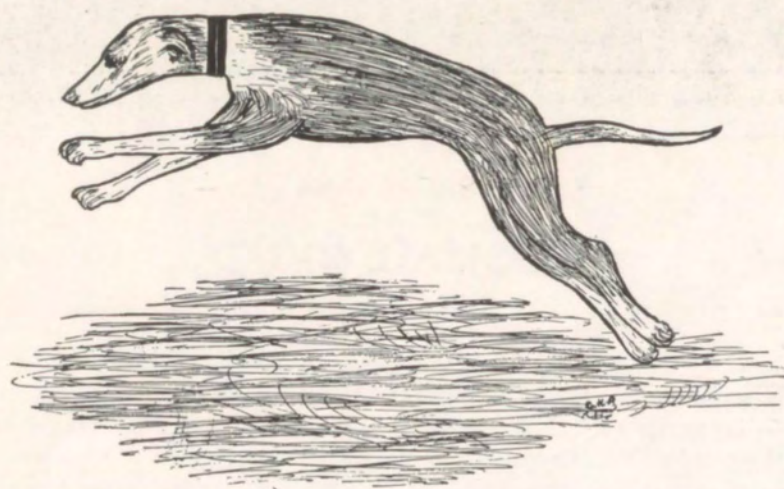
The program for initiating the Sophomores is a candlelight service. You will not find a more impressive ceremony. It is one of the most beautiful of all. The Girl Reserves also at Christmas time give a party for the needy children of the school. At various times throughout the year they have picnics and tea dances.

The Girl Reserve has various standards and ideals she must live up to if she desires to be a good girl reserve. In carrying out these activities, there are certain aims which we strive to follow. These are found in the Girl Reserve Code:

Gracious in manner	Seeing the beautiful
Impartial in judgment	Eager for knowledge
Ready for service	Reverent to God
Loyal to friends	Victorious over self
Reaching toward the best	Ever dependable
Earnest in purpose	Sincere at all times

The success of our organization has been due to the leadership of Miss Lulu Batchelder.

ATHLETICS



THE PARISIAN



FOOTBALL SQUAD

The Paris Greyhounds opened their grid season by tying a heavier Somerset eleven 7-7. With this start the Greyhounds completed a season which resulted in four (4) wins, three (3) losses, and two (2) ties. In Central Kentucky Competition the Colliermen had a rating of .667. The Greyhounds, living up to the canine reputation, were tougher in their own "back yard." On Hancock's field the Paris boys won all their games, defeating Georgetown, Mt. Sterling and Frankfort. The Greyhounds' only venture into out-of-the-conference competition resulted in a 19-0 defeat at the hands of Middlesboro.

THE SEASON'S RECORD

	Paris	Opponents
Somerset	7	7
Shelbyville	0	18
Cynthiana	6	0
Georgetown	30	0
Winchester	0	0
Mt. Sterling	24	0
Middlesboro	0	19
Madison	0	19
Frankfort	14	0

THE PARISIAN



BASKETBALL SQUAD

The Season's Record

	Paris	Opponents		Paris	Opponents
Gleneyrie	29	7	Lexington	15	16
Cynthiana	15	21	Richmond	32	29
Simon Kenton	13	15	Mt. Sterling	26	14
Newport	11	14	Frankfort	27	29
Covington	22	27	Richmond	18	20
Shelbyville	12	11	Lexington	20	27
Frankfort	39	32	Georgetown	29	13
Winchester	11	18	Harrodsburg	25	33
Georgetown	42	11	Cynthiana	25	22
Lancaster	28	13			

District Tournament

	Paris	Opponents
Headquarters	49	10
Little Rock	17	25

THE PARISIAN

BASKETBALL

The Greyhounds started their basket-ball season by defeating Gleneyrie 29-7. Paris started their C. K. C. title defense by bowing to Cynthiana 21-15. The Colliermen fought valiantly to retain the net crown, but the size and experience of the other teams made the season an extremely difficult one. In C. K. C. competition Paris won nine (9) while losing six (6). This gave them a .600 rating under the Dickinson system. The record for the entire season gives the Greyhounds eleven (11) wins against ten (10) losses.

COACHES

Looking back over the record of Coach Blanton L. Collier since he has been here we feel it beyond our ability to tell of his accomplishments. It would take volumes to tell of his triumphs in his work and even greater space to tell of his victories among the boys he has worked with. It is the general opinion that no finer coach or gentleman could be found than "George" Collier.

An able assistant to Coach Collier is found in Dick Butler a graduate of Paris High School and Washington and Lee University. Coach Butler's ability as a basket-ball coach is borne out by the tournament triumphs of the Junior High squad.

Dean Parrish, track coach and assistant football coach has become very popular with the boys since he has been with us. The record of his track teams and the splendid work which he has done in football has shown him well trained in his field. A good coach and a good fellow is our Dean Parrish.

A TOAST TO THE TEAM

Here's to the varsity regulars;
We doff our hats as you pass;
For months you have carried our standards,
Shown speed and nerve and class.
You leave us pleasant memories
Stamped deep by deeds you have done;
As friends we shall always cherish
Our share in your sorrows and fun.

You take with you a personality,
Self-confidence—mental power,
But part of you still lingers here
To influence, grow and tower.
This part of you is a spirit force
That generates the will to win,
Each year to touch the Varsity team
And make all lettermen kin.

So-long, you Varsity regulars!
Side by side you gave your best.
Well done is the work you've finished;
And the example you've set the rest
Will inspire those who will follow
To carry on in groups you've led.
Here's a toast to memories behind you
And good luck for the years ahead!

—(By H. V. Porter in H. V's Athletic
Anthology, used by permission.)

THE PARISIAN

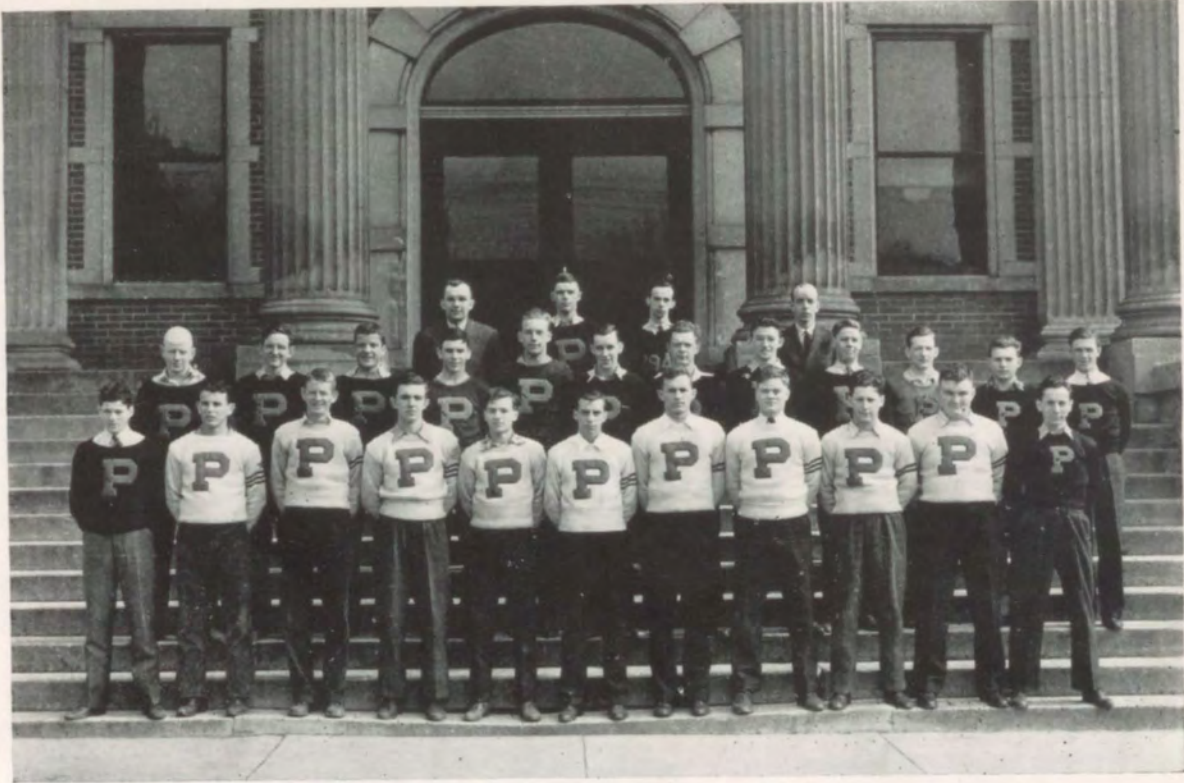


TRACK

Track at Paris High School has completed its third year. Under the expert guidance of Coach Dean Parrish, several outstanding track athletes have been developed. In a dual meet with Winchester last year Paris was nosed out in the last relay event to lose the meet by a small margin.

In the 1939 C.K.C. meet at Lexington, Paris, placed second in the 440 yard and 220 yard dashes, third in the 880 yard event and took a third in the pole vault. A tie with Somerset gave us third in the 440 yard relay. The climax of the season came when the mile relay team composed of Steele, Forbes, Willis and King set a new conference mark in the record time of three (3) minutes, forty-eight (48) and seven (7) tenths seconds. These placements gave Paris a third in the C. K. C. meet being headed by Henry Clay in first place and Winchester at second position.

Steele, Forbes, Willis, Welsh, Bowen and King were outstanding in their events. All team members taking winning places in last year's meets will be back this year along with some other good material. The Greyhound track team should go far and fast this year to add to the fame of other athletic teams. Due to the fact that this record will be published before the 1940 season the record for 1940 will be delayed until publication of the 1941 year book.



LETTERMEN

Joe Goodman—Football (2-3-4); Basketball (2-3-4), Earl Ruby's second all-state (3), all district and all regional (3), all district (4).

James Steele—Football (3-4); Basketball (4).

James Parrish—Basketball (3-4); Football (3).

David Parrish—Basketball (3-4); Football (2-3-4), Captain (4), all C.K.C. (4), Honorable mention all state (4), Honorable mention C.K.C. (3).

Billy Thompson—Football (3-4), Rotary cup (4); Manager basketball (3-4).

Billy Price—Football (2-3-4), all C.K.C. (3-4), Kentucky all state (4), Honorable mention all state (4).

Rex Lyons—Football (3-4).

Clay Roseberry—Football (2-3-4).

Paul Kenton—Basketball (3-4).

Jack McKenzie—Basketball (2).

Douglas Williams—Basketball (3).

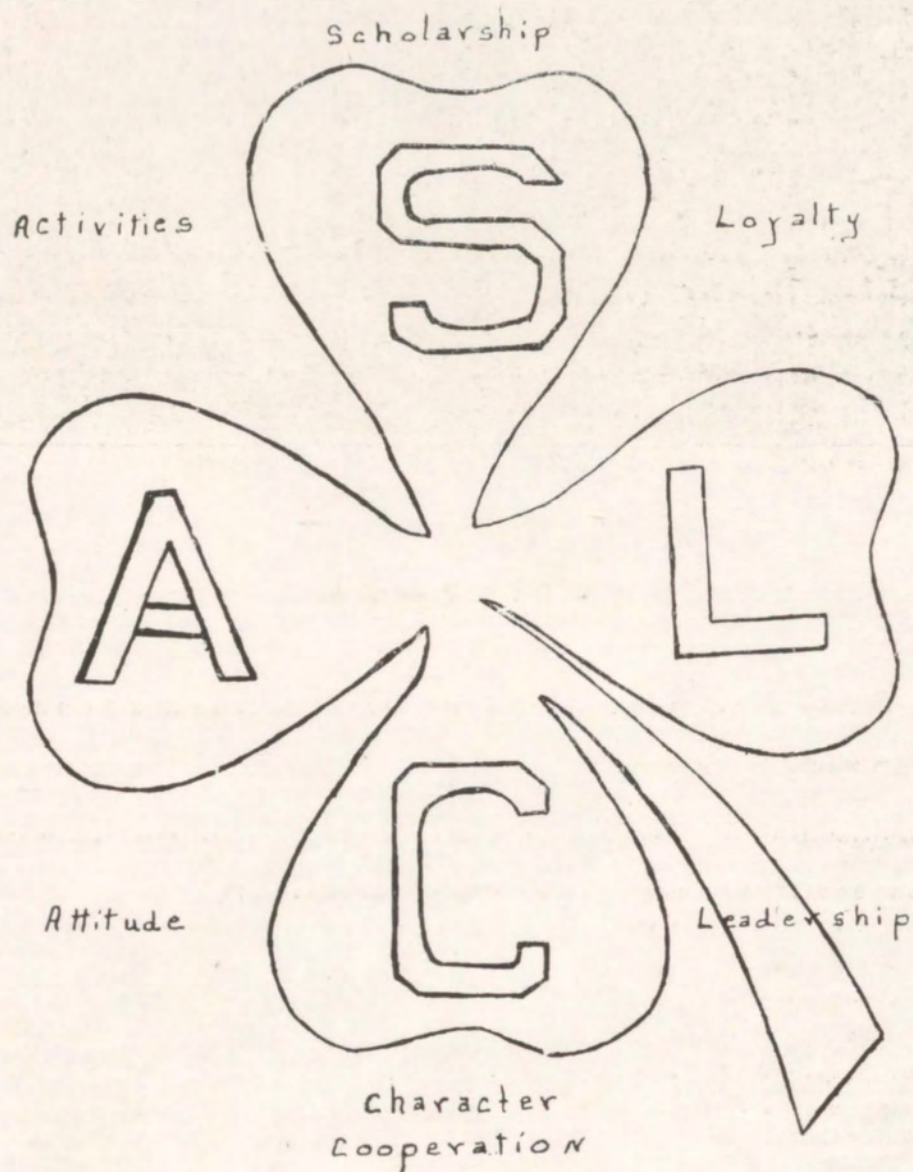
Stanley Barnett—Football (3).

Mike Sosby—Basketball (2).

Matt Lair—Football (2-3); Basketball (3).

Edward Sutherland—Manager Football (4).

JUNIORS



THE PARISIAN



THE ORANGE AND BLACK

The Orange and Black Book Service we consider the most inspirational and impressive event of the year in Junior High School. It is a time when the outstanding students are honored by the rest of the students and the faculty. They are asked to write their names, along with those who have gone on in Senior High and college, as the honor students of their classes. Few fail to live up to their trust.

The ceremony originated in the spring of 1928 at the suggestion of the Junior High Camp Fire Girls sponsored by Miss Ethel Congleton then head of the Junior High Latin Department.

The students are selected by the faculty on the basis, first of all, of their willingness to cooperate with all parts of the school's program; on the high achievement in their work, doing that work consistently, to the best of their ability; an interest in the scholastic and extra curricula side of their education, a participant or a loyal supporter of the school's athletics; their attitude toward their fellow students; their ability, at all times to abide by the regulations of the school; their loyalty and faithfulness to its ideals. In brief, it is an attempt to emphasize and recognize those traits which enter into the making of worthwhile citizens of the future.

1939 HONOR STUDENTS

Class of 1942

Faith Hall Phillips
Nathan Shaw
Ann Dudley Carr
Ralph Burton
Elizabeth Ferguson
Martha Boone Baldwin
Billie Dale
Billie Jo Johnston
Leland Brannon

Class of 1943

Dorothy Gifford
Elizabeth Allen Thomas
Nancy Hart
Harrison Gaitskill
George La Frana
Mary Margaret Snell
John Hopkins

Class of 1944

Patsy Burnett
Catesby Spears
Ann T. Clayton
Wright Smith
James Herzog
Helen G. Hutchcraft



IN
FRANKFORT



FLORIDA
ORANGE AND BLACK



?



SPEAKERS
8TH



SPELLERS
8TH



"ANANIAS BILL"



7TH GRADE SPEAKERS



FRESHMEN
HOME ROOM OFFICERS



FRESHMEN
SPEAKERS



HOME ROOM OFFICERS
8TH



LATIN THEMES



7TH GRADE SPELLERS



PUBLIC DISCUSSION

THE PARISIAN

FRESHMAN CLASS



FRESHMAN CLASS OFFICERS

President.....	Harrison Clay Gaitskill
Vice-President.....	Carolyn West
Secretary.....	Billy Harris
Treasurer.....	Dorothy Gifford

The freshman class of 1939-40, with 62 members, has had a good number of leaders and honor students, engaged in many extra curricular activities, athletics, music, public speaking.

On the Semester Honor Roll were: Carolyn West, Rhodes Skillman, George La Frana, Suzanne Nicholes, Billy Haggard, Nancy Hart, Elizabeth Allen Thomas, Fred Poplin, Lane Orr, Mary M. Snell, Billy Woodford, Harrison C. Gaitskill, Dorothy Gifford, Margaret Sanders, Ruth Smith, Jane Dockenbrode, Martha Faries, Neomi Schnitzler, Colletta Bullock, Ruth Morgan, Mildred Smart.

Honors were gained in athletics by the basketball team who became the champions in both District and Regional Tournaments. Boaz, Royse and Poplin were named on the All-Tournament Team. Other players were: Feeback, Orr, Roberts, Harris, La Frana, Skillman, Jefferson, Horton, and John Lee Roberts. Ten boys went out for football and did good work.

The cheer leaders have been the best for several years. Harrison Gaitskill and Betty Jean Taylor, with Martha Faries as substitute represented the freshmen. Nancy Hart and Elizabeth A. Thomas played all the songs for the rallies.

Representing the class in the speech contests were: Suzanne Nicholas, Elizabeth A. Thomas, Nancy Hart, Dorothy Gifford, Martha Faries, Betty Jean Taylor, and Nancy Burris. Martha Faries won third place in interpretative reading and Dorothy Gifford tied for third place in poetry reading in the elimination contests held for the Paris City School.

In the elimination contests held for voice, Clifton Humphries and Nancy Burris represented the class, and Nancy Burris won second place in the inter-mezzo group for girl soloists. Elizabeth A. Thomas was in the piano contest.

The band members were John Lee Roberts, Charles Roberts, and Rhodes Skillman; Billy Haggard led the band as drum major.

The Freshman class presented a comedy, "Ananias Bill." The cast included Dorothy Gifford, Nancy Burris, Martha Faries, Elizabeth Allen Thomas, Betty Jean Taylor, Carolyn West, Nancy Hart, Bill Woodford, Lane Orr, Billy Harris, Billy Haggard, Suzanne Nicholas, Harrison Gaitskill.

Faith Hall Phillips won second in the Poetry District Contest.

THE PARISIAN



WE WONDER

1. If Harris is having any trouble with his "Hart."
2. If Mary M. Snell is going on a diet.
3. If Mr. Butler will get a wig.
4. If C. West likes Miss Hunter or her relatives.
5. If Helen Campbell wears a "Shaw."
6. If Suzy will ever be six feet.
7. If Harrison C. Gaitskill will ever be without a girl.
8. If Bill Woodford will be a womanhater.
9. If D. C. Gifford is really a reformer.
10. If the real reason Elizabeth A. Thomas likes Mr. Collier is because of his name.
11. Why James Dockenbrode likes "Robin" hood stories.
12. Why Billy Haggard likes elfs and "Fairies."

FRESHMAN OF PARIS HI

We are the Freshmen of Paris Hi
And when we study the pages fly;
We are ever so helpful as you can see,
And we're just as good as good can be.

In English Mrs. Briggs does all she can
To teach us to speak so you can understand.
We learn about poets, such as Longfellow and
Shakespeare.
So don't laugh Eighth Grade, you'll have it next year.

In Algebra and Science Mr. Collier drills,
And before he gets through we all have cold chills;
But through his drilling and teaching in continuous
sessions
We finally catch on and learn the lesson.

Miss Hunter in History tries in vain,
To teach us about England, France, Germany, and Spain:
We learn about all the important events
And we know about kings, queens and the other "gents."

And last but not least, there is Miss McClintock,
Who knows all about Latin and the Roman Senate;
She tries and tries to teach us a lot,
And we all can say, "Amo, Amas, Amat."

These are the teachers of the Freshman Class,
They teach and help many a lad and lass;
Now we are The Freshman of Paris Hi
And we hope to be Sophomores bye and bye.

D. C. G.

FRESHMAN CLASS ROLL

Edna Earl Barlow
Charles Buchanan
Nancy Burris
Helen Campbell
Adrian Cannon
Wayne Cannon
Jane Dockenbrode
Martha Faries
Harold Feeback
Dorothy Gifford
Nora Sherlock
Mildred Smart
Carolyn West

Charles Roberts
Billy Haggard
Robert Hash
Jack Henessey
Robin Horton
Bruce Watson
Donald Jefferson
George La Frana
Juanita Lemons
Earl Thompson
Melvin Vaughn
Holton Mastin
Louise Sanders

Gene Scott
Ruth Smith
Jack Letton
Lane Orr
Billy Harris
Nancy Hart
Fred Poplin
R. J. Nixon
Bobby Boaz
Newt Clark
Frank Dalby
Henry Coons

Charles Langfels
Bobbie Marshall
Sammie Morgan
Jo Ella Morton
Helen McCracken
Robert McCracken
Suzanne Nicholas
Mildred Nichols
John Lee Roberts
Margaret Sanders
Clifton Humphries
Billy Woodford

Mary Bell Howerton
Elizabeth Allen Thomas
Kimbrough Schalch
Neomi Schnitzler
James Sebastian
Rhodes Skillman
Garland Snedegar
Mary Margaret Snell
Betty Jean Taylor
Harrison Clay Gaitskill
Clarence Buchanan
Clarice Williams

THE PARISIAN

EIGHTH GRADE



CLASS OFFICERS

President.....Ann Talbot Clayton
Vice-President.....Tommy Thompson
Secretary-Treasurer.....Margaret Brent Thomas

HOME ROOM OFFICERS

Mr. Butler—Ann Talbot Clayton, Jimmy Thompson, Ruth Cline.
Miss McClintock—Helen Hutchcraft, Robert Lucky, Margaret Brent Thomas, Patsy Burnett, June Royse.
Miss Mitchell—Catesby Spears, Tommy Thompson, Ardery Rorer, James Herzog, Betty Brown Pennington.

SPEAKING CONTEST

Public Discussion—Mary Helen Stone, Patsy Burnett.

Mary Helen represented the school at Richmond. She placed third among sixteen representatives of Central Kentucky schools.

POETRY CONTEST

Ann Talbot Clayton	James Herzog	Margaret Brent Thomas	Margaret Houston
Betty Brown Pennington	Mary Helen Stone	Mary Ann Saunders	Helen Gibson Hutchcraft
Gay Ferguson	Anneta Rankin	Dorothy Roe	Clara Lee Witte
Ruth Cline	Patsy Burnett		

Latin Theme Winners—Patsy Burnett, James Herzog, Wright Smith.

SPELLING CONTEST

Mary Willis May	James Herzog	Frances Flora	Ann Talbot Clayton
C. K. Cannon	Helen Hutchcraft	Evelyn Hufnagel	Clara Lee Witte
Dorothy Roe	Carroll Carter	Julian Curtis	Tilly Thompson
Mary Marsh	Patsy Burnett	Ruth Cline	

Helen Gibson Hutchcraft went to the State Spelling Contest in Louisville to represent Paris, she was one of forty-one out of one hundred nineteen to survive the written contest and came with the thirty-five to receive a money award.

THE PARISIAN



EIGHTH GRADE ROLL

Mary Willis May
Marie Sebastian
James Thompson
Charles McCord
Martha Grinnell
Ruth Adele Cline
Herman Williams
Virginia Stanfield
Paulinee McVey
Mary Gene Lair
Evelyn Hufnagel
Raymond Crump
Emma Buchanan
Billy Arnsparger
Kerney Thomas
Jimmy Brannon
George Caughey

C. K. Cannon
Margaret Day
James Greene
Reece Kenney
Bobby Luckey
Bruce Turner
Beulah Vickers
Gene Barlow
Edith Caywood
Marvin Glover
Charles Greene
J. W. Morton
Annetta Rankin
Juanita Scott
Frances Turner
Claralee Witte

Billy Alexander
Olin Boardman
Elmeta Buckler
Kelly Haddix
Catesby Spears
Patsy Burnett
Carroll Carter
Foster Farris
Gay Ferguson
J. C. Harney
James Herzog
William Jones
Henry Curtis
Frances Flora
Wright Smith
Bessie Sprake

Joe Allen
Ruth Jones
Billy Rice
Billy Liter
June Royse
Jack Cooper
Julian Curtis
James Insko
Harry Lowe
Ray Lytle
Amy Puckett
Carl Reed
Mary Marsh
Dorothy Roe
Ardery Rorer
Nancy Moore

John Thomas Hazelrigg
Mary Rose Ebner
Betty Brown Pennington
Mary Ann Saunders
Helen Gibson Hutchcraft
Mary Helen Stone
Margaret Brent Thomas
Ann Talbott Clayton
Ruth Ann McCabe
Tommy Thompson
Juanita Blackstone
Dorcas Bell O'Neal
Matilda Thompson
Della Mae Herndon
Elizabeth Hudnall
Margaret Houston

Our class is composed of many people,
Some are small some tall as a steeple;
Helen's a girl as bright as a tack,
For reading, Betty Brown has a knack;
While Catesby and Brent to Florila go,
There's never a thing Ann doesn't know.
Ruth of course, is sweet and shy
Mary Gene is something money can't buy.

Mary Ann plays pianos something grand,
Tilly is an ardent movie fan,
Often a-visiting Mary Willis does go,
Frances' voice is Oh, so low,
Mary Helen, a speaker, is unusulaly good,
While Ardery always does just what she should.
Annetta writes like a copy-book page,
Claralee is the future, will be known as a sage.

That finishes the girls, fifteen strong,
And now the boys must come along.
While Wright, as a scholar, will always gleam,
June is captain of the basket ball team.
James is a wizard at arithmetic,
Figures to him are only a trick.
Carroll is always half asleep,
And right now Jimmy has oversized feet.

Arnsparger is always hiding girls' pencils,
Tommy, an artist, has all the utensils.
Now last, but not least, comes Bobby Lucky,
For a boy of his age, he's very plucky.
Now that's our class of twenty-four,
Counting me; wait and see
If next year there aren't more!

—Patsy Burnett.

THE PARISIAN

SEVENTH GRADE



CLASS OFFICERS

President.....Jack Clay
 Vice-President.....Bill Phillips
 Secretary-Treasurer.....Wilma Wagoner

SPELLERS

Gloria Burns
 Norla Reed
 Bobby Worthington
 Billy Parker
 Gladys Clough
 Annabelle Brown
 Ann H. Hutchcraft
 Fred Wheeler

Jimmy Henry
 Billy Day
 Shirley Wassom
 Hazel Parker
 Joalyce Harney
 Frances Skeen
 Mary Scott

SPEAKERS

Marilyn Kasey
 Beryl Horton
 Sara Jane Berry
 Virginia Buckner
 Alberta Morris
 Betty Shire
 Ralph Becraft
 Jack Clay

Entry—Brass Quartet—Don Smith.

SEMESTER HONOR ROLL

Marie Arnold
 Dorcas Kiser
 Jack Clay

Paul Tate
 Shirley Wassom
 Virginia Buckner

Alberta Morris
 Evelyn Wright
 Layson Doty

Kathryn McDaniel
 Sara Jane Berry

TOM THUMB WEDDING

Marie Arnold Bride
 Bill Phillips Groom
 Bobby Taylor Maid of Honor
 Billy Davis Best Man
 Kathryn McDaniels, Billy McConnell Bride's Parents
 Dorcas Kiser, Ralph Becraft Groom's Parents
 Paul Tate Minister

Bridesmaids—Virginia Buckner, Marilyn Kasey, Ann H. Hutchcraft, Betty Shire, Beryl Horton, Ann Moore.

Ushers—Jack Clay, Jay Wallace, Don Smith, Milton Sheeler, Ussery Wilder, Layson Doty.

THE PARISIAN



SEVENTH GRADE CLASS ROLL

Forest Ashbrook
Jim Allen
Marie Arnold
Billy Baber
Ralph Becraft
Sara Jane Berry
Margaret Bradburn
Calhoun Brothers
Annabelle Brown
Gloria Burns
Rosa Buckler
Virginia Buckner
Reynolds Carter
Jack Clay
Gladys Clough
Earl Clough
Albert Crump
Emmett Crump
Billy Davis
Billy Day
W. E. Deering
Bishop Delaney
Layson Doty

Lewis Ebner
James Farmer
J. C. Frye
Georgia Goodpaster
Kathryn Greene
Joalyce Harney
Margaret Harris
Wilbur Hedges
Jimmy Henry
Beryl Horton
Dorothy Hufnagel
Ida Jane Scott
Georgianno Insko
Roy Lee Jefferson
Marilyn Kasey
Billy Kimes
Dorcas Kiser
Charles Lawrence
Mildred Lawrence
Pauline Lawrence
John Lyons
Harry Marsh
Billy Mastin

Harry McCullom
Billy McConnell
Wilma Wagoner
Kathryn McDaniel
Smith Mitchell
Billy Montgomery
Ann Moore
Harvey Lee Morgan
Alberta Morris
Joyce Napier
Frank Nichols
Raymond Orme
Eetty Lou Parker
Billy Parker
Hazel Parker
Bill Phillips
Joe Purcell
Norla Reed
Eugene Roe
J. K. Rogers
Bertha Sapp
Grant Saunders

Ann Howell Hutchcraft
Mary Scott
Milton Sheeler
Betty Shire
Clyde Singleton
Frances Skeen
Don Smith
Ann Sprake
Paul Tate
Bobby Taylor
Evelyn Watson
Onda Wagoner
Jay Wallace
Shirley Wassom
Evelyn Watson
Fred Wheeler
Ussery Wilder
Eddie Burke Williams
Grant Wilson
Ben Woodford
Bobby Worthington
Evelyn Wright
Ada May McCracken

THE PARISIAN



JUNIOR HIGH PEP CLUB

Betty Jean Taylor
Harrison Gaitskill

Ardery Rorer
Betty Brown Pennington

Edward Burke Williams

Pianists: Nancy Hart, Elizabeth Allen Thomas.



JUNIOR HIGH FOOTBALL SQUAD

THE PARISIAN



JUNIOR HIGH BASKETBALL SQUAD

PLAYERS

June Royse	g	Bruce Turner	g
James Insko	g	Lane Orr	c
Bobby Boaz, Capt.	c	Harold Feedback	f
Fred Poplin	f	Charles Roberts	f
Wilbur Hedges	f	Robin Horton	f
Billy Harris	g	John L. Roberts	g
Rhodes Skillman	Manager		

SEASON'S RECORD

Paris	Opponents	Paris	Opponents
20	Gleneyrie 13	15	Cynthiana 13
10	Bryan Station 17	30	Flemingsburg 9
29	University Hi 17	14	Lexington Jr. 13
11	M. M. I. 13	20	Morton Jr. 23
18	M. M. I. 5	20	Richmond 26
10	Mt. Sterling 16	16	Lexington Jr. 25
16	Richmond 9	19	University 8
25	Georgetown 5	35	Bryan Station 22
16	Cynthiana 14	10	Morton Jr. 34

INVITATIONAL TOURNAMENTS

District Tournament

Paris 23	North Mildletown 14
Paris 20	Clintonville 10
Paris 15	M. M. I. 10

Regional Tournament

Paris 43	Flemingsburg 5
Paris 34	Berry 9
Paris 19	Mt. Sterling 18

THE PARISIAN

SENIOR ATHLETES

Joe Goodman is a natural ball player. On the gridiron he is fast, shifty and smart. Although he isn't the biggest boy on the squad he can be counted on to take out the biggest man on the opposing team. On the basketball court anyone that has seen Joe play knows when he brings the ball up the floor it is in good hands. A good leader is Joe and can be depended on to give his all for the team.

D. C. Parrish, more commonly known around school as "Snake", is one rough boy in action. Out of the thickest part of the fight will emerge D's grinning face. What he lacks in natural ability he makes up in pure old fighting spirit, typical of the others in his family.

Jim Parrish, who naturally loves to play ball follows the Parrish tradition, however his enthusiasm often overcomes his better judgment. Full of fight and always on the go is Jim. Jim, spitting on his hands and getting set is the signal for things to pop. Unfortunately he didn't get to play football his senior year because of an injury but he was out there every day rooting for the team.

To say that Jimmy Steele is big and tough would be putting it mildly. On the cinder path Jimmy has made himself known as one of the best men on our squad and one of the best in Central Kentucky in the 440 yard dash. He was good on both the gridiron and the basketball court.

Billy Price—an end who won his share of honors this year. He was named on the Eastern All Star team and played end. He was named all C. K. C. and honorable mention all state. He played center in basketball and dashed the hopes of many teams by his prowess.

Billy Thompson or "Tubby" to us is not only a dependable football player but he is a scholar. He won the Rotary cup for 1939-1940. He served also as manager in basketball.

Clay Roseberry was an outstanding football player. As a plugger he was one of the few boys who didn't worry the coach about holding up his part of the load.

Paul Kenton could be counted on to do his part in any basketball game. Although handicapped by his eyes Paul was always in there plugging.

Rex Lyons, a red headed guard, was always dependable in football. He was in there doing his part every time.

Marion Burton waited until his senior year to start his football campaign. With this late start he came through well at his end position.

SENIOR CLASS PLAY

"HONOR BRIGHT"

Authors: Meredith Nicholson and Kenyon Nicholson

Directed by Miss Zerelda Noland

Watts	Clay Roseberry
Michael	Billy Price
Foster	Marion Burton
Mrs. Barrington	Kenney Shropshire
James Schcoley	Alfred Shire
Mrs. Carton	Betsey Cobb Glass
The Reverend William Carton	Withers Davis
Richard Carton	Billy Young
Honor Bright	Ann Richmond
Annie	Hattie Belle Skillman
Maggie	Esta Mullikin
Tot Marvel	Nadine Baird
Simpson	James Steele
Jones	Billy Thompson
Bill Drum	Rex Lyons

Features



Alfred Shire

CHEMICAL NATURE OF WOMAN

This element we call woman is a member of the human family, and it has been assigned the chemical symbol WO. The accepted atomic weight is 120, although a number of isotopes have been identified having weights ranging from 95 to 400.

Occurrence—It is abundant in nature, found both free and combined, usually associated with man. That found in the U. S. is preferred.

Physical properties—A number of allotropic forms have been observed. Their density, transparency, hardness, color, boiling point, and melting point varies within wide limits. The color exhibited by many specimens is a surface phenomenon, and is usually due to a more or less closely adherent powder. It has been found that an unspoiled specimen turns green in the presence of a polished one. The boiling point for many varieties is low, while others are likely to freeze at any moment. All varieties melt under proper treatment. The taste varies from sweet to bitter, depending upon environment and treatment.

Chemical properties—Absorbs, without dissolving in, a number of liquids, the activity being greatly increased by alcohol. Absorbs seemingly unlimited quantities of expensive food. Some varieties catalyze this food into fat according to the formula PV equals RT. Many naturally occurring varieties of WO are highly magnetic. In general, the magnetism varies inversely with the density and size, directly with the square of the valence, and inversely with the cube of the age. Some varieties tend to form Anne-ions and some Cat-ions. Their ionic migrations vary widely. All varieties exhibit great affinity for Ag., Au., and Pt., and for precious stones in both chain and ring structures. The valence toward these substances is high and it is complicated by the fact that the valence is never satisfied. Many stable and unstable unions have been described, the latter in the daily press. Some varieties, being highly explosive, are dangerous in inexperienced hands. In general, they tend to explode spontaneously when left alone temporarily by man. The application of pressure to different varieties of WO produces such a variety of results as to defy the principle of Le Chatelier.

Uses—Highly ornamental, wide application in arts and domestic science. Acts as a positive or negative catalyst in production of fever as the case may be. Useful as a tonic in alleviation of sickness, low spirits, etc. Efficient as a cleaning agent. Equalizes distribution of wealth. It is also, probably the most powerful (income) reducing agent.

HOME ECONOMICS CLASS

September 12, 1939

Mrs. Peed smiles upon her intelligent cooking class and then tells her pupils how to equip their Home Ec. boxes.

September 14, 1939

Mrs. Peed lets her promising pupils operate the sewing machines.

September 16, 1939

The stitching isn't up to standard so the bewildered class has its first lesson in ripping.

September 18, 1939

Her pupils aren't so promising.

October 4, 1939

Being disgusted with the sewing Mrs. Peed announces that the class is to take up cooking.

October 10, 1939

The cheerful class proceeds to the kitchen with high hopes of cooking when all their dreams are shattered, finding they have to wash dishes.

November 9, 1939

Learning to make white sauce (not creamed sauce).

December 20, 1939

To the delight of all, they make candy—which isn't edible until the next day.

January 8, 1940

Still making white sauce.

February 20, 1940

Doing all the damage possible in the kitchen they proceed back to the sewing room.

March 5, 1940

Mrs. Peed loses patience when she finds one of her pupils basting on the sewing machine.

March 11, 1940

Back to ripping.

April 2, 1940

Still ripping.

... JOKES ...



Billy Young—I am about to deliver a flowery address.
Miss Noland (speaking to class)—Now stop laughing and give him a chance to bloom.

Ray—Miss Noland, would you happen to know how many words there are in the English language?

Miss Noland—No, I don't Ray. Why?

Ray—Oh, J. C. wants to invent a typewriter that will type words instead of letters.

Betsy Cobb—I don't see how football players ever get clean!

Joe—Silly, what do you think the scrub teams are for?

Kenton—What model is your car, Jim?

Jim P.—It isn't a model. It's a horrible example.

Carl W.—I'm a self-made man.

Joanna—How nice of you not to blame anyone else.

Price—Did you hear about the fellow who stayed up all night figuring out where the sun went when it went down?

Martha—No, what happened?

Price—It finally dawned on him.

Lloyd— Please!

Hazel—No!

Lloyd—Aw, come on!

Hazel—No!!! positively!

Lloyd—Aw, c'm on, Hazel, let me go to the pool room, all the other fellows are down there.

Esta—Look, it's starting to rain.

Adele—Yeah? I hope it keeps up.

Esta—Whaddya think ya mean?

Adele—Well, if it keeps up, it can't come down, can it?

Billy Young writing a theme on "My Relations" ended with this beautiful sentiment: "The entire group gathered around the piano, holding hands and singing to the tune of "Old Aunt Zion." "

D. C.—Will you please put Nadine on the wire?

Mr. Baird—Whaddya think my daughter is, a tight rope walker?

Withers—I was speaking to 20,000 people in Madison Square Garden.

Mary N.—You were! What did you say?

Withers—Peanuts, crackerjacks, cigars, candy.

A gossip is one who talks about others, a bore is one who talks about himself, and a brilliant conversationalist is one who talks about yourself.

Miss Batchelder—I will give to charity until it hurts.

Mr. Scott—Will you give me a dollar?

Miss Batchelder—Well, here's twenty-five cents.

Mr. Scott—You can't stand much pain, can you?

Burton—Are you in the habit of speaking to girls you don't know?

Hopkins—Uh-huh. All the girls I know won't speak to me.

One morning, last December, Mr. Collier and Mr. Butler were walking to school:

Mr. Collier—I'm afraid it's just about all off.

Mr. Butler—What's about all off?

Mr. Collier—Your hair!!

June—I don't think I'd marry the best man on earth.

J. D.—If you marry me, you won't be taking that risk

Ed. S.—Ginger Ale

George T. (Soda Jerker)—Pale?

Ed. S.—No, just a glass

Kenney—What is your income?

Clay—About three o'clock in the morning.

Miss Hunter (presenting to 8A the cast of the Freshman play) Wright asked, "Who plays opposite Harrison?"

Betty Brown looked glum, while Helen leaned over to her and whispered, "Don't you wish you were a Freshman?"

Miss Hunter overheard, looked at Betty Brown and remarked, "Can't you take it, Betty Brown?"

The room came down in an uproar, then Miss Hunter added, "You've got to give the Freshman girls a chance once in a while, you know."

Kenneth—There goes a fellow who seems to take the worst possible view of everything.

Ann R.—What is he, a pessimist?

Kenneth—No, he's a candid camera fiend.

June Royse (every study period)—May I ask Helen where my Latin lesson is? Geography? English? Arithmetic?

A teacher's nickname for Olin—Chief Running Mouth.

The constant trio—Juanita, Beulah, Bessie.

J. C.'s shadows—Kerney and Olin.

Billy's—Miss Mitchell's assistants.

The long and short of it—Baber and Purcell.

The idol of the 8th grade—Kay Kyser.

The idol of the 7th grade girls—A boy.

What would Ann Talbott do if she didn't have a Carroll to sing?

What would Patsy do if she weren't always Wright?

Why does Mary Ann want a Glass slipper with a Buck-le on it?

Why does Ardery try so hard to B. Young?



NAT'L FORENSIC LEAGUE
CLUB OFFICERS



FRENCH CLUB OFFICERS



STATE BETA
CLUB OFFICERS



CAMERA FIENDS



BETA CLUB OFFICERS



SPANISH CLUB OFFICERS



LADIES'MAN



COMMERCIAL CLUB
OFFICERS



WHAT'S THE JOKE BOYS?



ROMANCE



WE THREE COACHES



MOVIE DAY



COME ON OUT



THE PARISIAN

1939-1940 SENIOR CLASS CALENDAR

SEPTEMBER

- 6—Students report for classes.
- 7, 8, 9—Sophomores have trouble with their lockers.
- 18—Mrs. Randle speaks at the first convocation of the year on food, health, etc. Seniors decide that all speakers in the future must have jokes as good as Mrs. Randle's.
- 19-24—Log-Rolling and Lobbying enters the Senior Class, when officers are up for election.
- 29—End of the first school month. What, no monthly test?

OCTOBER

- 6—Vacation, teachers go to Richmond C. K. E. A. meeting.
- 9—Report cards are given out.
- 16—The Beta Club installs eight new members; Dr. Clark of Transylvania is the principal speaker. During the noon-hour several seniors decided that a fire would be more interesting to go to than English class, which explains the late entrants to Miss Noland's domicile.
- 17—Can't imagine why some of the seniors had an 8 o'clock class with Miss Noland.
- 18—Holding a bon-fire in the city lot was supposed to encourage the team before meeting Mt. Sterling—(Score —Paris, 24; Mt Sterling, 0).
- 24—Senior boys take an I. Q. test, then had their heads examined.
- 27—Hurray! Another C. K. E. A. meeting.
- 30—All seniors take the I. Q. test. This time no heads were examined.

NOVEMBER

- 1—Beta Club picnic at Nichol's farm. Miss Lavin displays unusual talent and acting ability in a dramatic interpretation of "The Three Bears."
- 9—There might be something to these bon-fires. After the one held tonight the team was greatly encouraged— Score— Paris, 14; Frankfort 6.
- 13—Miss Noland holds her first debate meeting at which officers were elected.
- 29—Junior play, "Little Miss Dreamer." The senior class loses a very attractive member, Jeanne King, when wedding bells ring out.

DECEMBER

- 6—Rotary Club has the football team as their guests; Billy Thompson receives the Brent Cup. Santa Claus parade gets us out of school for a change.
- 12—O, joy! A memorable day in our lives! ANN RUTHERFORD VISITED PARIS HIGH. The senior boys walked around in a daze for several days later.
- 18—Romance Language Clubs hold their Christmas parties.
- 19—Commercial Club and the Girl Reserves play Santa Claus to the kindergarten children.
- 20—Choir presents a program of Christmas music before the Rotary club. School dismisses for Christmas vacation.
- 26—Hazel Lyons is given the D. A. R. award.

JANUARY

- 2—Well, here we are again, back in school. Where is Miss Batcheldor?
- 3—Miss Batcheldor returns to school and terrifies the Senior Economics class with her hint of dire events of shooting, court proceedings, and carrying guns during her VACATION. Something to discuss during the noon-hour.
- 5—Billy ("Bruiser") Young enters the Golden G'oves Tournament.
- 28—The Wreck of the Hesperus—Miss Batcheldor drives to Lexington.

FEBRUARY

- 6—Speaking and Singing Recital. Who was the little girl that scared all the senior boys sitting in the third row?
- 8—Coach borrows and loses "Gib's" keys. Finds them later in his pocket.
- 16—A slight case of "making-up" and "note-passing" is nipped in the bud by Miss Lavin during her study-period. Clay learns that using an accomplice on "Note-passing" is a bad policy, especially during class.
- 23, 24—Beta Club convention in Lexington. The Paris representatives had more than their share of fun, what with riding elevators, discovering rabbits, etc.
- 27—Choir holds a "swing session." We didn't know Miss Blanding was a jitterbug.
- 28—Opening the new gymnasium-auditorium with the District Basketball Tournament.

MARCH

- 4—H2S makes annual appearance. Did those chemists know a faculty meeting was going on in the room above?
- 14, 15—D. A. R. Pages' Ball in Louisville. My, what sleepy people made their appearance!
- 19—To further prove their knowledge (?), the seniors take placement tests.
- 22—District Speaking Contest held in Paris, Lafayette (High School of Lexington) ties with Paris for first place in the contest.

APRIL

- 1—Miss Isgrig, in a forgetful mood, falls for an April Fool's joke by cruising from the laboratory to the upper floor to see the man who really wasn't there.
- 11, 12—The National Forensic Tournament in Lexington. Paris debaters just missed the semi-finals.

THE PARISIAN

RECENT COLLEGE HONORS (1938-1940)

PHI BETA KAPPA

University of Kentucky—
Power Prichard
Leslie Allison

Randolph-Macon—
Helen Taylor Hazelrigg
Princeton—
Sam Clay

GRADUATED WITH HIGHEST DISTINCTION

Power Prichard
Leslie Allison
Sam Clay

Elias Elvove
Helen Taylor Hazelrigg

NATIONAL SCHOLASTIC HONORS

Marion Dailey—

Winner of the Competitive Scholastic Scholarship to Sweet Briar College, 1937; chosen as one of four Sophomores to attend St. Andrews University, St. Andrews, Scotland during her junior year.

Helen Taylor Hazelrigg—

"Who's Who in American Colleges"—1939-1940.

INTERNATIONAL HONORS

Constance Kennedy—

Winner of an Exchange Scholarship for a year's study in France.

COLLEGE HONORS

Sam Milner—

Won first place in college oratory contest, a member of the Honorary Law fraternity based on scholastic standing; winner of a \$1,200 scholarship to the University of Michigan.

Jim Caldwell—

University of Kentucky editor of "Kentucky Kernel", University publication; President of the Kentucky Inter-Collegiate Press Association—1940.

Betty Lindsay Roseberry—

Has been elected Editor-in-Chief of the MacMurray Year Book, "Illwoco" for 1940-41.

Elizabeth Grimes Chapman—

Has been chosen a member National Freshman Woman's Honorary Sorority, Lambda Alpha Delta for which a 2.5 standing is required.

Martha Thomas—

Is the Transylvania representative to the Mountain Laurel Festival May 1940.



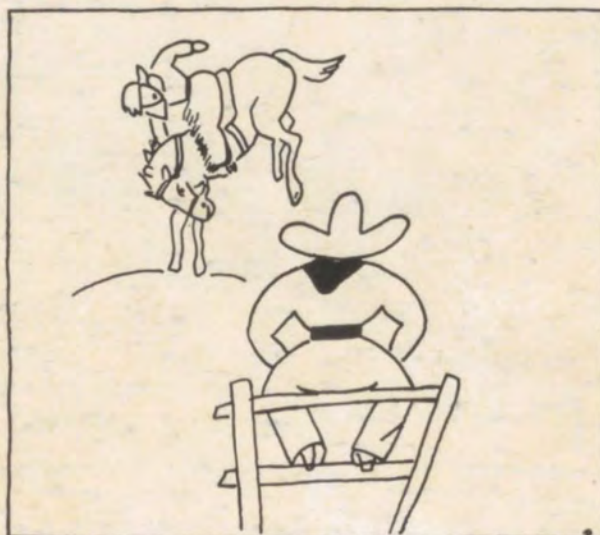
MUSIC CONTESTANTS

BUSINESS PATRONS AND FRIENDS

The National Bank & Trust Co.
 Buckner, Rice & Harris, Insurance
 Emil Raines
 Dr. B. N. Pittenger
 Dr. R. C. Bate
 Dr. Wm. S. Morgan
 Lucien M. Arnsperger, Insurance
 Dr. J. P. Shipp
 Dr. Eugene Hyden
 Pearce Paton
 Dailey & Grubbs
 George Doyle
 Paris Auto Salvage Company
 Western Auto Supply Company
 C. D. Thompson, Insurance
 Everman Poultry Company
 Bourbon Lumber Company
 Ann Ritter
 Lucy Woodford Kenney
 Sally Spears
 Waller's
 Sanitary Barber Shop
 Price & Company
 Daugherty Brothers
 Spillman's Beauty Shop
 Strickler Furniture Shop
 La Rose Beauty Shop
 Criswell's Bourbon Supply Co.
 Paris Laundry & Dry Cleaning Co.
 Bourbon-Agricultural Bank & Trust Co.
 Wheeler Furniture Company
 Wills Grocery & Meat Market
 Hitch's Barber Shop
 J. C. Penney Company
 Dr. H. G. Gilliam
 Jack Cohan's Men's Shop
 Ardery's Drug Store
 J. K. Greer
 Grinnell's Dry Cleaning
 Hinton-Turner Funeral Home
 Wollstein's Clothing Store
 J. J. Newberry Company
 Friedman's Shoe Store
 Piggly-Wiggly
 Cinderella Shoe Store

Ralph Connell
 Clifton Arnsperger
 Dr. H. E. Mathers
 George Batterton
 Dr. Martha Petree
 Woman's Exchange
 Chas. P. Cook
 Leder's Auto Supply
 Tyree Shoe Shop
 H. T. Brown, Groceries
 Sinclair Service Station
 Moore's Service Station
 Bond Cleaners
 C. L. McDaniel
 Shelby Lusk
 A. G. Hollaway
 Dixie Restaurant
 Estill Hutson
 Model Dress Shop
 Ford & Company
 I. L. Glass
 Sam Milner
 James L. Gorey
 Albert Johnson
 Worick Brothers
 L. C. Johnson
 Main Street Market
 Mary K. MacMillan
 John A. Royse
 Norma Mae Mastin
 Edward Fithian
 Jack Woods
 Robert L. Cooper
 Donald Lykins
 Lloyd Violet
 Gilbert Lytle
 Mrs. G. C. Redmon
 Joe Kelly
 Mort Himes
 Elwood Carr
 Amelia Clay
 Thomas Letton
 Bill Roberts
 John M. Stuart
 J. W. Bell & Sons

Logan Howard
 Baldwin Hotel
 Kentucky Utilities
 Varden Drug Store
 Gibson Motor Company
 Cleary Fighmaster, Jr.
 Bow's Service Station
 Bourbon Hatchery
 F. C. Johnstone
 Spears-Kiser Company
 Davis Funeral Home
 Woodford Spears & Sons
 Mrs. Douglas Wilson
 Baldwin Motor Company
 Mrs. C. P. Bales
 J. W. Davis & Company
 Bernard Santen
 W. Keith Summerhayes
 Joe Mitchell's Grocery
 Butler's Taxi Station
 Brown Cleaners
 Keller Ewalt
 Donald Keene
 Charles Terry
 Wm. Brophy
 Robert A. Rose
 John Merringer's
 Paris Pharmacy
 Shire & Fithian
 J. T. Hinton Co.
 Thomas Elder
 Paris Garage
 James Goodman
 Mountain Dew Coal Co.
 Christman's Florist Shop
 Benton Beauty Salon
 Sheeler Lumber Co.
 Smit's Green Houses
 Sadler & Collins
 A. & P.
 Bush's Ten Cent Store
 Bourbon Steam Laundry
 Mrs. J. H. Thompson
 Commercial Garage



THE END

