

THE

P

A

R

I

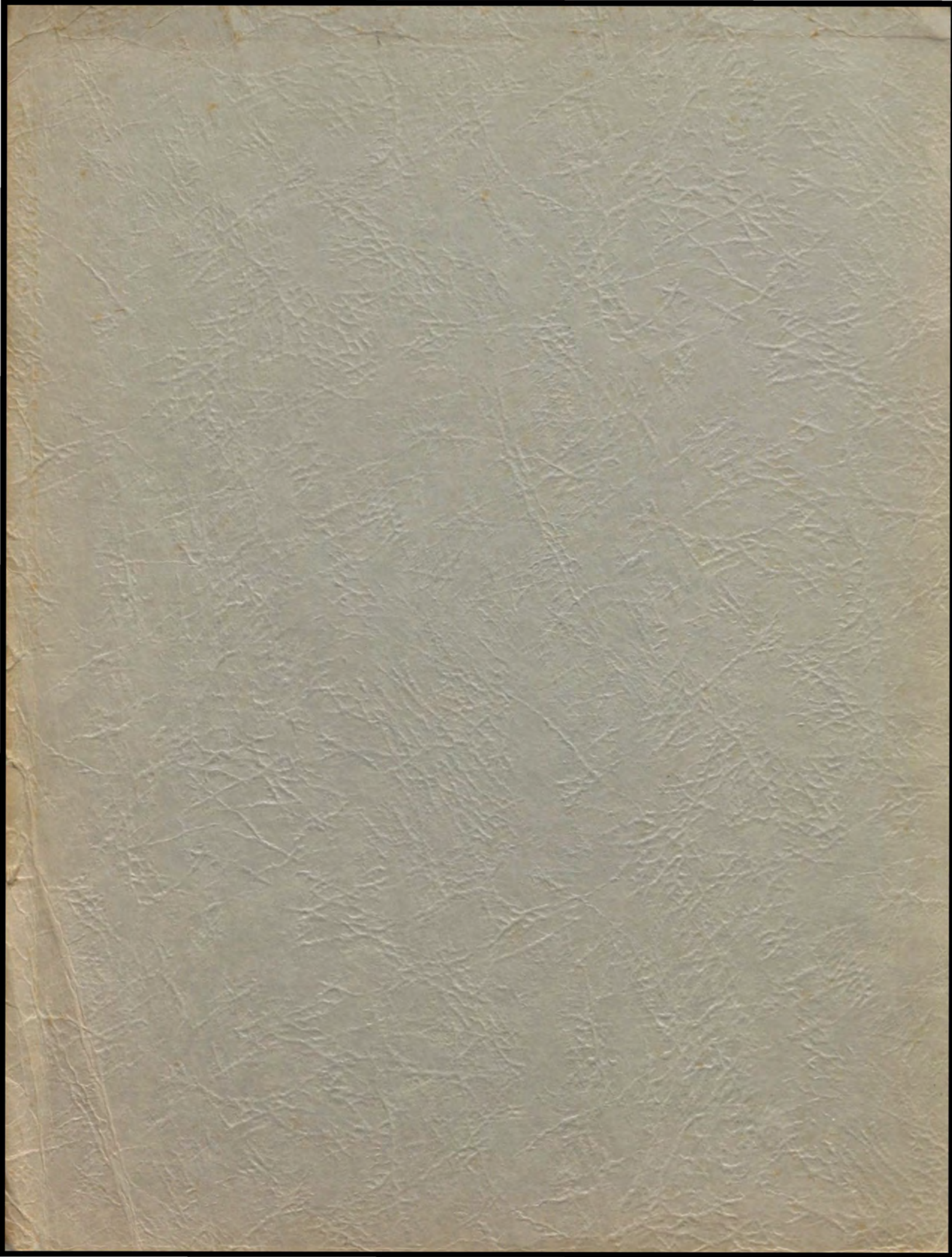
S

I

A

N

1947



THE PARISIAN

1947



PUBLISHED BY

SENIOR CLASS OF PARIS HIGH SCHOOL

DEDICATION

WE,
THE MEMBERS OF
THE SENIOR CLASS OF
1947
DEDICATE THIS ANNUAL
AS A TOKEN OF GRATITUDE
TO THE BUSINESS MEN OF PARIS
WHO COOPERATED WITH US
IN OUR ENTERPRISE



LEE KIRKPATRICK

Superintendent

A.B., Georgetown College; M. A., Columbia University;

Graduate Student, Harvard University



SENIOR HIGH TEACHERS

SENIOR HIGH FACULTY

Ellen Blanding—University of New York; Music.

Mrs. Louise Clay—A.B., University of Illinois; Librarian.

Elizabeth Clotfelter—A.B., Centre College; History.

Mary Eleanor Isgrig—A.B., University of Kentucky; Science.

Gilbert Lavin—A.B., University of Kentucky; M.A., University of Michigan; Latin.

Mr. Sergius Leach—A.B., Asbury College; Mathematics.

Zerelda Noland—A.B., University of Kentucky; M.A., Columbia University; English.

Virginia Lee Overstreet—A.B., University of Kentucky; Physical Education.

Mrs. Dan Peed—B.S., University of Kentucky; Home Economics.

Mrs. W. V. Shaw—A.C.A., Bowling Green; A.B., Bowling Green; Commerce.

Betsy Brooks Woodford—A.B., University of Kentucky; Romance Languages.

Mr. Robert Herbert—University of Kentucky; Athletics.



ANNUAL STAFF

EDITORS-IN-CHIEF -----Annelle Miller, Ralph Vogler, Mona Lawhorn
ASSISTANT EDITORS -----Betsy Dodge, George Doyle
ART EDITORS -----Ernestine Rakes, Martha Ruggles, Charles Lathram
CLUB EDITORS -----Bernice Smart, George Doyle
ADVERTISING MANAGERS-----Billy Gillespie, Jimmy Mitchell, Bruce Fudold, Mona Lawhorn
TRIBUTES TO MR. SCOTT AND BURL CLARK-----Calvin Greenup
BIOGRAPHERS -----Kent Hill, Sue McCann, Joe Bodkin, Doris Williams
JOKE EDITORS -----Nancy Watlington, Earl Turner Annelle Miller, Bobby Harris
TREASURER -----Billy Gillespie
SNAPSHOT EDITORS -----Bobby Kirkpatrick, Ralph Vogler, Sue Jane Lykins, Annelle Miller
Marguerite W. Kuster
SPORTS EDITORS -----Billy Gillespie, George Wilder
CIRCULATION MANAGERS -----Betsy Dodge, Nancy Lu Hudson, Tommy Herzog
TYPISTS -----Betty McCord, Willie Jean Wells, Bobbie McCord, Bernice Smart



FELIX AMIS SCOTT

The class of 1947 reverently pays tribute to Professor Felix Amis Scott who died September 11, 1946. Although Mr. Scott, as he was called by everyone, had been in failing health for several years, his death came as a severe shock to everyone. He had served as Principal of Paris High School for twenty-five years, assuming his duties shortly after his discharge from the Army. He held the rank of Lieutenant in the American Expeditionary Forces and served in Europe. During his stay in Paris, Mr. Scott taught mathematics, despite the fact that he had majored in history. His knowledge of both subjects was always most stimulating.

Mr. Scott was a jolly, kindly person. Believing that the only way to have a friend was to be one, he was habitually tolerant, cooperative, and understanding. Most of his time and energy he devoted to the education of young people and their activities. In appreciation of honest effort, he praised them; in patience, he reprimanded them; and in a spirit of comradeship he often laughed with them.

In the last few years Mr. Scott scheduled all athletic contests. He also served as tournament manager for the annual District and Regional Tournaments held at the Southside Gymnasium.

When Mr. Scott died, both the school and the community lost a loyal and intelligent leader. As the years pass, memories of him will undoubtedly inspire all who have had the privilege of knowing him.

Service, fellowship, and honor were his watch words. May they be ours as well.



BURL BONTA CLARK

In memory of Burl Bonta Clark who died on October 12, 1946, as a result of a head injury suffered the night before in a football contest held at Mt. Sterling.

Burl was a splendid example of good sportsmanship. He possessed an undaunted fighting spirit, loyalty to the principle of clean play, and an inherent love of the game. In 1945 a Junior in high school, he served as captain of the Greyhound squad. He had previously played in 1943, when the "Hounds" went undefeated. During that season Burl played end.

But Burl had other interests besides football and one of these I particularly noticed, was his ability to make friends and to be nice to everyone with whom he came in contact. He always had a smile and a word of hearty cheer for everyone.

The death of a young person is usually a shock to the ones left behind, but the fact that it came to Burl with a pounce while he was playing the game he loved makes his death seem doubly tragic to all who knew him. Every member of the class of 1947 will remember him as a fine athlete and a good boy who performed his task on earth with a gay and valiant spirit.



WHY?



PEEPING
TOMS



NATURAL



B-29



Ah! Love



THINKER



THOSE PLAYFUL
BOYS



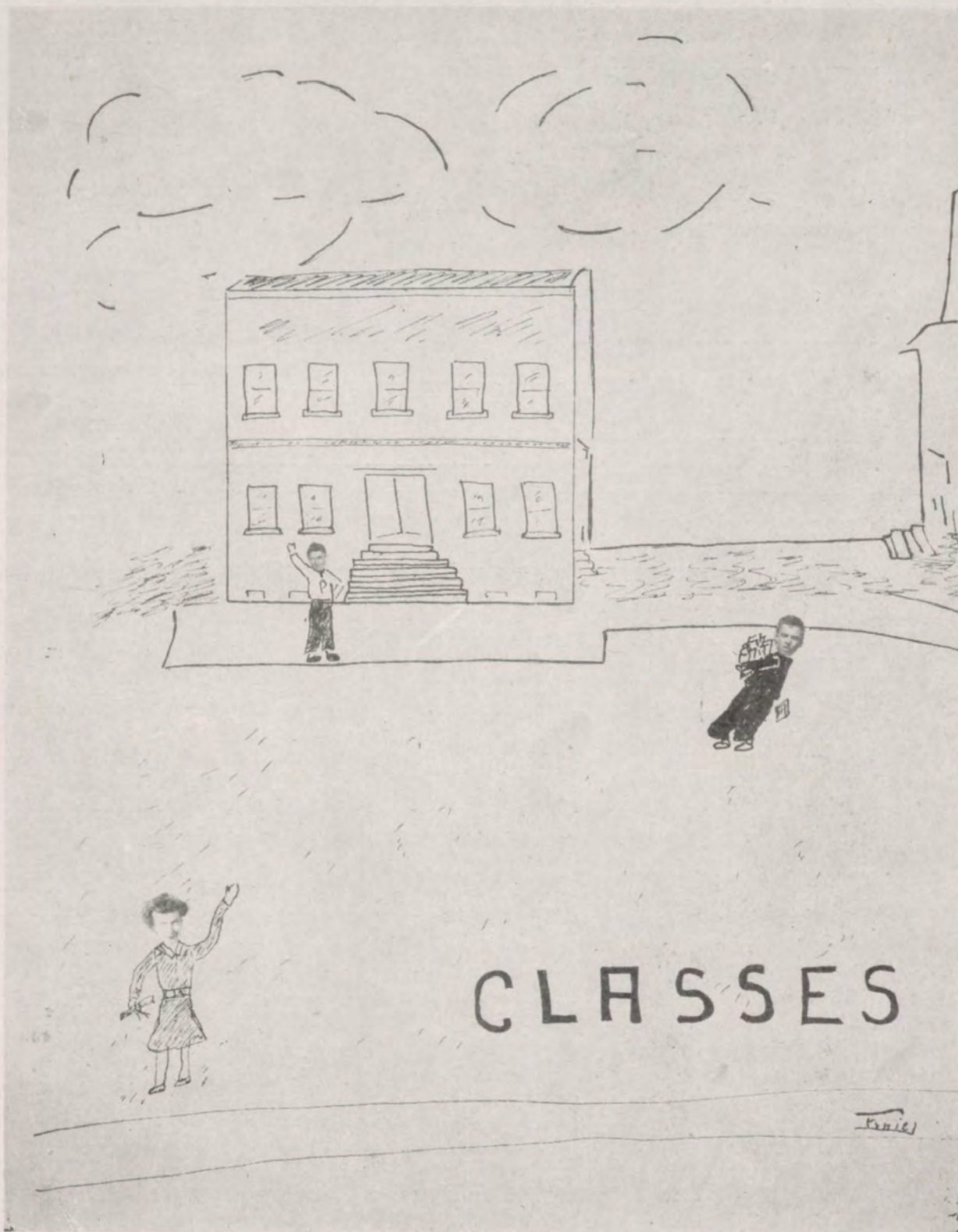
STUDIOUS?



The Pass!



CAT-MAN



SENIORS



CLASS OFFICERS

PRESIDENT	BERNICE SMART
VICE-PRESIDENT	SUE McCANN
SECRETARY	BRUCE FUDOLD
TREASURER	BILLY GILLESPIE

Abbie Crump—

Handsome, dashing, debonaire,
Here's a thrill for maidens fair.
Football 2, 3, 4; Basketball 2, 3, 4.



Marguerite Wornall Kuster
Here's to our first married lass,
With best wishes from the Class.

Spanish Club 3; Junior Chorus 1; Home Ec Club 1, 2, 4; Girls' Glee Club 2, 3, 4; Latin Club 2.

Nancy Watlington—

She's as quiet as a mouse,
But we've had lots of fun at her house.

French Club 3, 4; Spanish Club 4; Beta Club 3, 4; Girls' Glee Club 2, 3, 4; Service Club 4; Girl Reserve 2, 3, 4; Annual Staff.



Rex Schalch—

Over hills and dales,
He's always hunting cotton-tails.

Latin Club 2; Football 2, 3, 4.

BERNICE SMART—

She's the leader of our cheers.
With her in charge, we have no fears.

Glee Club 2-3-4; Orange and Black 1; Choir 4; Commercial Club 3-4 (V.P. 4); Latin Club 2-3-4; Pep Club 4; Girl Reserve 2-3-4; Secretary 3; Service Club 4; Home Ec Club 1; French Club 2-3; Beta Club 3-4, President 4; Class Officer 4, President; Cheer Leader 1-2-3-4; Junior Chorus 4; Annual Staff. (V. P. Latin Club).

JACK LUCKY—

Hear Ye; Hear Ye! Hear me say
He'll change Evelyn's name some day.

Latin 2; Glee Club 2; Band 1.

BETTY McCORD—

A young lady shy and sweet,
One of the nicest you'll ever meet.

Latin 2; Junior Chorus 1; Commercial Club 2-3-4; Girl Reserve 2-3-4; Home Ec 1; Annual Staff.

EDDY GILLESPIE—

As busy as he can be and studious too,
But he can always furnish a laugh for you.

Eeta Club 3-4; Parisian Circle 2-3-4; Choir 3-4; Class Officer 4; Treasurer; Spanish Club 3-4, Treasurer 4; National Forensic League; Service Club 4; Orange and Black 1; Commercial Club 4; Boys' Glee Club 2-3-4; Pep Club 4; D.A.R. Citizenship Award 1; Annual Staff.



RALPH VOGLER—

He isn't fond of quiet little nooks,
But he likes a gal by the name of "Snooks."

Orange and Black 1; Glee Club 2-3; Beta Club 3-4; French Club 3-4; Latin Club 2-3-4; Parisian Circle 3-4; Band 1; Football 4; Service Club 4; Pep Club 4; Annual Staff.

BETTY CLAYTON—

Happy-go-lucky, fair and free,
Nothing there is that bothers me!

Latin Club 2; Commercial Club 4; Girls' Glee Club 2-3; Girl Reserve 2-3-4.

BOBBY HARRIS—

He doesn't want a steady,
But yet he likes a certain Betty.

Band 1-2; French 2-3-4; Latin 2; Choir 2-3-4; Boys' Glee Club 1-2-3; 4-H Club 1-2-3-4; Annual Staff.

MARY CATHERINE INGEL—

Bright as a silver dollar,
She's never a 10 o'clock scholar.

Spanish Club 3-4; Choir 4; Girls' Glee Club 3-4; Home Ec Club 1-2; Girl Reserve 2-3-4.

MONA LAWHORN—

"Faithful Mona" is her name—
She never misses a basketball
game.

Orange and Black 1; Class
Officer 2, Treasurer; Beta Club
3-4; Girl Reserve 2-3-4; Com-
mercial Club 4; Choir 4;
French Club 3-4; Latin Club
2-3; Girls' Glee Club 2-3-4;
Junior Chorus 1; Parisian Cir-
cle 4; Service Club 4; Pep Club
4; Annual Staff.

GEORGE WILDER—

His smartness, wit and smiling
face,
Would make him stand out
any place.

French Club 3-4; Beta Club
3-4; V.P.-4; Glee Club 2-3-4;
Basketball 3-4; Service Club
4; Annual Staff.

RISSIE PENNINGTON—

"From the Halls of Monte-
zuma,
To the shores of Tripoli,"
Yet he has never found a gal
like "Rissi."

Home Ec 3; Spanish Club
3-4; Glee Club 3; Commercial
Club 4; Girl Reserves 3-4.

BRUCE FUDOLD—

Bruce is our B.T.O.
You see him wherever you go.
Football 1-2-3-4, Manager 3;
Glee Club 2-3; Class Officer 4,
Secretary; Basketball Manag-
er 3; Annual Staff.



JIMMY MITCHELL—

Humpty Dumpty sat on a wall,
Watch out if he starts to fall!

Beta Club 3-4; Class Officer
3, Secretary; Football Man-
ager 3-4; Commercial Club 3-4,
President 4; Parisian Circle 4;
Service Club 4; Boys' Glee
Club 2-3-4; Spanish Club 3-4;
Pep Club 4; Annual Staff.

MARTHA RUGGLES—

"Tootie-tootie," the Paris beau-
ty!

May sometime be a Middle-
town "Cutie!"

Home Ec Club 1; Latin Club
2-3-4; French Club 3; Com-
mercial Club 4; Girls' Glee
Club 2-3-4; Girl Reserve 2-3-4;
Beta Club 3-4, Treasurer 4;
Pep Club 4, Pianist; Junior
Chorus 1; Orange and Black
1; Service Club 4; Choir 4;
Annual Staff.

BILL KIMES—

Coming out of his Navy blue,
He found a gal so sweet and
true.

Football 1-2-4; Basketball
1-2-3; Latin 2; Glee Club 2;
Spanish Club 3.

AGNES HIMES—

Quiet and contented as she
can be,
She is well liked as you can
see.

Choir 4; Spanish Club 4;
Latin Club 2; Girl Reserve
2-3-4; Glee Club 2-3-4; Com-
mercial Club 3; Home Ec Club
2, 4.

NANCY LU HUDSON—

A lovely girl who did her part,
But Jimmy Hilke captured her heart.

Orange and Black 1; Junior Chorus 1; Home Ec Club 2; Latin Club 2-3-4; Girl Reserve 2-3-4; Girls' Glee Club 2-3-4; Parisian Circle 2-3-4; Beta Club 3-4; French Club 3-4; Band 3-4, Majorette; Service Club 4; Choir 4; Annual Staff; D.A.R. Citizenship Award 1. (President Latin Club.)

CHARLES LATHRAM—

A wisecracker—a clever boy
Who filled our schooldays with lots of joy.

Commercial Club 3-4; Latin Club 2-3; Basketball Manager 4; Band 1; Boys' Glee Club 2-3-4; Annual Staff.

SUE McCANN—

Brimful of mischief, wit and glee,
As ever a human being could be!

Latin Club 2-3-4; French Club 3; Class Officer 4, Vice-President; Girl Reserve 2-3-4, President 4; Girl's Glee Club 2-3-4; Service Club 4; Annual Staff.

JOE BODKIN—

I've been out courting on a date,
Courtin' a lady named "Sally Kate."

Football 2-3-4; Basketball 2-3-4; Band 1-2-3-4; National Forensic League; French Club 3; Boys' Glee Club 2-3; Class Officer 1-2, President; Commercial Club 3; Annual Staff.



ANNELLE MILLER—

Cheerful and an excellent scholar,
A good example for all to "fol-lar."

Girls' Glee Club 2-3-4; Choir 4; Service Club 4; Latin Club 2-3-4; Girl Reserve 2-3-4; Spanish Club 4; French Club 3-4, Secretary 4; Beta Club 3-4, Secretary 4; Orange and Black 1; D.A.R. Citizenship Award 4; Annual Staff.

ELLIS GARRISON—

Our Ellis has manners complete

I'm telling you he's "alreet!"
Football 3-4; French Club 2-3; Boys' Glee Club 2-3-4; Choir 3-4.

KENT HILL—

I love coffee—Willie loves tea,
I love Willie—Willie loves me!
French Club 2-3; Home Ec Club 1; Commercial Club 3-4; Girl Reserve 2-3-4, Vice-President 4; Band sponsor 4; Girl's Glee Club 2-3-4; Choir 4; Latin Club 2; Class Officer 3, Secretary; Junior Chorus 1; Annual Staff.

CALVIN GREENUP—

A dillar, a dollar, a tardy scholar,
Why do I come at all!

Spanish Club 3; Football Manager 2-3-4; Basketball Manager 2-3; Commercial Club 3-4; Latin Club 2; Annual Staff.

SUE JANE LYKINS—

Won't the upstairs hall be bare,
When Sue Jane and Billy are
no longer there?

Spanish Club 3; Girls' Glee
Club 2-3-4; Commercial Club
3; Home Ec Club 1-2-4; Girl
Reserve 2-3-4; Latin Club 2;
Junior Chorus 1; Annual Staff.



BOBBY KIRKPATRICK—

Some people are silly—some
are funny,
But Bobby is our "Bugs
Bunny."

Boys' Glee Club 2-3; Span-
ish Club 3; Commercial Club
4; Latin Club 2; Annual Staff.



ERNESTINE RAKES—

She is gentle and she's sweet—
The kind of girl one likes to
meet.

Choir 4; Home Ec Club 1;
Commercial Club 3-4; Girls'
Glee Club 2-3-4; French Club
2; Girl Reserve 2-3-4; Latin
Club 2; Cheer Leader 4; Junior
Chorus 1; Annual Staff.



CLYDE BOAZ—

Basketball rebounds all
around,
It's at Blake's home he'll be
found.

Football 2-3-4; Basketball
2-3-4; Choir 3-4; Boys' Glee
Club 2-3-4; Commercial Club.



BOBBIE McCORD—

To Jimmy she'll never give
the cold shoulder—

She's little, but mighty as
a boulder.

Girls' Glee Club 2-3-4; Latin
Club 2-3-4; Commercial Club
3-4; Home Ec Club 1; Girl Re-
serve 2-3-4; Junior Chorus 1;
Service Club 4; Annual Staff.



GEORGE DOYLE—

He's red headed and he likes to
laugh—

At football he's unsurpassed.

Latin Club 2; Beta Club 4;
Orange and Black 1; Service
Club 4; Football 3-4; Basket-
ball 4; Choir 2-3-4; Glee Club
2; Spanish Club (President 4);
(Vice-President 3); Annual
Staff.



ANN BLAKE—

Boaz, Boaz, he's my man,
If he can't do it nobody can.

Spanish Club 3; Girls' Glee
Club 2-3-4; Commercial Club
3; Home Ec Club 1-2-4; Girl
Reserve 2-3-4; Latin Club 2;
Junior Chorus 1; Band 1-2-3-4.



EARL TURNER—

I'm long, lean and lanky—
that's plain to see,
Mildred is the girl for me!

Latin Club 2; Football 3;
Commercial Club 3-4; Boys'
Glee Club 2-3; Annual Staff.

BETSY DODGE—

Dodge, Coons, and Blake—
that's the triangle—
Let's hope they never meet in
a mangle.

French Club 3-4, President
4; Spanish Club 4; Eeta Club
3-4; Girls' Glee Club 2-3-4;
Choir 4; Service Club 4; Girl
Reserve 2-3-4; Parisian Circle
3-4; Band 3-4, Majorette; An-
nual Staff.

BOBBY EWALT—

Cynthiana, Cynthiana, that's
my town,
When I think of it I never
frown.

Commercial Club 3-4; Latin
Club 2.

HELEN LAWRENCE—

On roller skates she sets a
speedy pace,
But in Carlisle, she's faster yet
in Cupid's race.

Latin Club 2; Commercial
3; Girl Reserve 2-3-4; Junior
Chorus 1; Girls' Glee Club
2-3; Home Ec. Club 1-2-4.

DORIS RUTH WILLIAMS—

She likes 'em short, she likes
'em tall,
But she likes H. R. the best
of all.

Choir 4; Girls' Glee Club
2-3-4; Junior Chorus 1; Band
1-2-3-4; Drum Major 4; 4-H
Club 3-4; Latin Club 2; Cheer
Leader 1-2-3-4; Girl Reserve
2-3-4; Annual Staff.



TOMMY HERZOG—

In our band he plays the drum
Whenever he takes the time to
come.

Spanish Club 3-4; Band
1-2-3-4; Football 3-4; Speech
Club 2-3; Commercial Club 3;
Latin Club 2; Boys' Glee Club
2-3; Annual Staff.

NANCY SMITH—

When Nancy gets to be a
nurse—
She'll save many a one from
a ride in the hearse.

Girls' Glee Club 2-3; Junior
Chorus 1; Choir 4; Commercial
Club 3-4; Latin Club 2; Girl
Reserve 2-3-4; Home Ec. Club
3; Annual Staff.



AGNES McKENZIE—

Happy go lucky and carefree
is she,
A swell companion with whom
to be.

Girl Reserve 2-3-4; Girls'
Glee Club 2-3-4 Commercial
Club 3-4; Latin Club 2; 4-H
Club 2-3-4; Home Ec. Club
2-3-4; Junior Chorus 1; Band
1-2-.



WILLIE JEAN WELLS—

If Willie ever sold her car,
To all of us 'twould be a jar.

Commercial Club 3-4; Girls'
Glee Club 2-3-4; Junior
Chorus 1; Girl Reserve 2-3-4;
Choir 4; Band 1-2-3-4; Spanish
Club 3; Latin Club 2; Annual
Staff.





— SMILES —



YUM! YUM!



— STRUT —



BOING-G-G!



— HEAVY —



What's The Secret?

TWO SWEET PEOPLE



JUNIORS



CLASS ROLL

Atwell Adair
Ann Ashbrook
Billy Barlow
Bobby Blake
Sally Kate Bobbitt
Billy Boyd
Marie Caslick
Helen Caywood
Sam Clay
Helen Fletcher

Charles Fryman
Pilly Gaines
Mary Helen Galloway
Helen George
Helen Haddix
Ann Lura Hayden
James Hilke
Nancy Hukill
Barbara Insko
James Jackson

Ruth Jefferson
Jacqueline Jordan
Jerrylyn Jordan
J. R. Jones
Dudley Keller
H. R. Kenney
Frank Lawrence
Thomas W. Maher
Joe Maner
Ida Jane Maye

Clinton Maye
Billy Bruce McMahan
Janis Mendenhall
Colleen Monson
Rebecca Myers
William Edward Peters
Billy Ramsey
Harry Robin
Doris Schnitzler
Jane Smith
Jean Smith

Jack Steele
Fandora Templin
Bobby Lee Thompson
Nancy K. Tobin
George Varden
Harry Wagner
Anna E. Watson
Bobby Wells
Jack Whalen
Mattie Williams
Helen Woodford



CLASS OFFICERS

President	-----	Bobby Blake
Vice-President	-----	Bill Boyd
Secretary	-----	Mary Helen Galloway
Treasurer	-----	Ann Lura Hayden

HAIL TO THE JUNIORS

So proudly we hail our Junior class
Every member, lad and lass.
We're one of the best that can be found
Even though our grades go up and down.
Fifty-three of us in all
Greatly add to the noise in the hall.
The basketball team is good, it's true,
Because our seven help pull them through.
And when the cheering section is loud
You can bet the Juniors sure are proud.
Our teachers do what's best for us
And yet, we wonder why the fuss.
There are some of us of every size,
Length of hair and color of eyes.
We've two grade teachers to help us along
To keep us on the path, so we won't go wrong.
We Juniors just have one more year,
So good-bye, Seniors, and lots of cheer.

JUNIOR CLASS HISTORY

There are fifty-three very industrious students in the class of '48, now the Junior class of '47. Thirteen of these are in the National Beta Club, and four in the Parisian Circle. These are two honorary societies of Senior High Schools.

We are almost evenly divided into two homerooms with thirteen boys and fourteen girls in Miss Lavin's room; and fourteen girls and twelve boys in Miss Woodford's room.

Among the many extra-curricular activities, our Juniors are very active. Some of these are: Glee Club, Choir, French Club, Spanish Club, Commercial Club, Debating, Public Speaking, Band, Physical Education, Football, and Basketball.

We go in whole heartedly for the National drives for funds, and usually have a rather high average. Our honor roll consists of about ten students but this number varies each month.

There are always a number of different subjects offered to the Juniors each year. Some of these are Geometry, English, History, French, Spanish, Latin, Home Economics, Shortland, Typing, Bookkeeping, Physics, and Chemistry.

SOPHOMORES



CLASS ROLL

John Anderson
William Blanton
Bobby Boyle
William Burns
Henry Carroll
Albert Clough
Elaine Cohen
Beulah Collins
Paul Crump
John Cunningham
Ann Webb Day
Bobby Downing
Ruby Farris
Barrie Fischer
Phyllis Fisher

Gene Fronk
Delores Galbraith
Emerson Galloway
Ruth Hilke
Henry Hill
William Hudnall
Harold Humphries
Kelly Hunt
Golda Mae Hutson
Ruby Jefferson
Wallace Johnson
Frankie Johnston
Walter Kenney
Jane Larkin
George Lawrence
Barbara McConnell

Eunice McDaniel
Katherine McKenzie
Alleene Owen
Gladys Paynter
Helen Sadler
Sylvester Sanders
Barbara Ann Shriver
Alexandria Simos
Hobert Spivey
Preston Thompson
Alfrieda Turner
Corrine Turner
Mary Turpin
Ann Vickers
Alan Vogler

CLASS HISTORY

In September, 1937, the Sophomore Class of '47 had its beginning. We entered Elementary School and after six years we finally reached long awaited Junior High. The changing of classes and many teachers thrilled us. The three years of Junior High went swiftly and in June, 1946, we graduated into Senior High. After several weeks we became accustomed to our new schedule and accepted the new activities which Senior High brought forth.



CLASS OFFICERS

President	-----	John Anderson
Vice-President	-----	Ruby Farris
Secretary	-----	Ann Webb Day
Treasurer	-----	Henry Carroll

HERE'S TO THE SOPH'S

To Senior High we came with fear
Duly warned of our Sophomore year.
Many new teachers we had' to impress
Through long lessons we were to progress.
Forty-six we are in number,
All are dumb—some are dumber.
The Sophomore boys gave their all
To basket and to football.
Phyllis and Frankie are in Debate
You certainly would say they are first rate.
Our cheerleaders, McConnell and Farris,
Help lead the yells for the teams of Paris.
John Anderson, our Sophomore President,
Is a Paris scholar and a county resident.
Our home-room teachers, Isgrig and Leach,
Remember our good points, we beseech.
Every Sophomore, one and all
Hopes to be a Junior by next Fall.





THE PARIS HIGH SCHOOL CHAPEL CHOIR

This year the Paris High School Chapel Choir had the distinction of taking part in more public activities than ever before. The choir is under the capable direction of Miss Ellen Blanding, who has the reputation for developing good musicians. Members are:

SOPRANOS	ALTOS	TENORS	BASSES
Ernestine Rakes	Betsy Dodge	Pobby Blake	Ellis Garrison
Mary Catherine Ingels	Kent Hill	Bill Boyd	Bobby Harris
Mona Lawhorn	Agnes Himes	Albert Clough	Clyde Boaz
Bernice Smart	Nancy Lu Hudson	George Doyle	Atwell Adair
Ann Lura Hayden	Martha Ruggles	Billy Gillespie	Sam Clay
Marie Caslick	Nancy Smith	Jimmy Jackson	James Hilke
Anna Elizabeth Watson	Willie Jean Wells	H. R. Kenney	J. R. Jones
Mary Helen Galloway	Doris Williams	Billy Maher	Billy Bruce McMahan
		Bobby Thompson	Jack Steele

Accompanist, Annelle Miller

Baccalaureate Service
 Constitution Day—September 17th
 State Convention of Woman's Christian Temperance Union
 Rotary Club Christmas Program—24th consecutive year
 Christmas Program—Paris High School
 Baptist Church—Youth Program
 Methodist Church—Youth Program
 Opening of Wheeler's

Most people think that all fleas are black
 But I don't think it's so.
 'Cause Mary had a little lamb
 With fleas as white as snow.



THE SERVICE CLUB

The Service Club consists of the senior members who have at least a B standing. Each member of the club is asked to devote a certain amount of time each day toward the improvement of the school program and its activities. These members are picked by Professor Kirkpatrick to help with this activity.

Members of the Club are:

Martha Ruggles

Pilly Gillespie

Jimmy Mitchell

George Wilder

Ralph Vogler

George Doyle

Betsy Dodge

Sue McCann

Mona Lawhorn

Bobbie McCord

Bernice Smart

Annelle Miller

Nancy Lu Hudson

Nancy Watlington

One early Sunday evening,
The moon was big and bright.
All of God's little children
Were tucked in for the night.

I was looking out my window,
Gazing at the stars,
Wondering what it would be like
To take a trip to Mars.

As I lay there in a coma,
I was filled with such delight.
And a strange and wonderful feeling
Passed over me that night.

I was dreaming I was in English class,
Reading this poem to you,
And a strange feeling tells me,
This dream will probably come true.

Stan. M. F.

THE JUNIOR RED CROSS

The Junior Red Cross has been an active organization in Senior High since early in the war and it remains just as active now that the war is over. This year Mrs. Fielding Rogers has been the chairman for Bourbon County and Miss Gilbert Lavin and Miss Betsy Brooks Woodford are faculty sponsors.

The Junior Red Cross Council is composed of Ernestine Rakes, Martha Ruggles, Ann Webb Day and James Hilke. They have ably promoted the work within the school and with the faculty sponsors, they have represented our school at two county-wide meetings. Ann Webb Day was elected Secretary of the county organization of the Junior Red Cross.

The membership drive in the fall resulted in a hundred percent membership. Early in the year the members prepared gift boxes for children overseas. Their next undertaking was to produce handmade articles for children in hospitals in this country and abroad. Woolen squares for afghans and woolen bed socks, "New Havens," were knitted, and booklets of English and French letters were prepared to go overseas as a part of the effort to promote international understanding.

At Christmas the council members assisted other Junior Red Cross units in decorating the Massie Memorial Hospital. They have also arranged window displays of articles made by the Junior Red Cross of Paris and Bourbon County.

In March, we conducted a Limerick Contest on the subject of Fire Prevention. Winners were Atwell Adair, Fandora Templin, Ernestine Rakes, and Harry Robin.

SLEEPY HEAD

When Mother calls at seven o'clock
And says it's time to rise,
I know I should, but then again
It's hard to open my eyes.

And then I snuggle back again—
And hope to sleep until 7:10
When I started counting sheep
Mother still wouldn't let me sleep.

I slowly sit up in my bed
And look around and scratch my head
And think, "It seems such a short time back
That I went in and hit my sack."

Stuart W. F.



THE PARISIAN CIRCLE

Nancy Lu Hudson
Betsy Dodge
Mona Lawhorn
Ralph Vogler

Billy Gillespie
Jimmy Mitchell
Atwell Adair
Nancy Hukill

Bobby Thompson
Marie Caslick
Henry Hill
Ruth Hilke

The Parisian Circle is composed of twelve members, two Sophomores, four Juniors, and six Seniors. These students must be consistent honor roll students and are elected by their fellow classmates for their merit and willingness to cooperate in all school activities. It acts as a reception committee for all school functions, whether it be an athletic event, play or speaking event. It works for the promotion of a worth while school spirit. It typifies school loyalty at its best. The right to wear the circular emblem of the Parisian Circle is one of which the Paris High Student may be justly proud.

Miss Noland: If Shakespeare were alive today, would he be considered a remarkable man?

Mona: I think so. He'd be nearly 400 years old.

Miss Noland: Have you done your outside reading?

Stuart: No, ma'am. It's too cold to read outside.

Mr. Leach: (To Math. class after finishing a long problem) And so we find, after investigation, that x equals 0.

Martha: My goodness. All that work for nothing.



Y-TEEN CLUB

The Y-Teen Club was formerly called Girl Reserves. The name was changed to emphasize the fact that the High School girls are the younger members of the Young Women's Christian Association.

The name gives us a fine chance to kill the code and rid ourselves of the routinized and meaningless program that has grown around it. The Y. W. C. A. purpose is big enough to include teenagers too!

The purpose of the Y. W. C. A. is:

"To build a fellowship of women and girls devoted to the task of realizing in our common life these ideals of personal and social living to which we are committed by our faith as Christians.

"In this endeavor we seek to understand Jesus, to share his love for all people and to grow in the knowledge and love of God."

Every girl in Senior High School is a member. The Sophomores are admitted into the club during the year by a very impressive program planned by the other members.

Y-TEEN OFFICERS

Sue McCann	-----	President
Kent Hill	-----	Vice-President
Sally Kate Bobbitt	-----	Secretary
Nancy Tobin	-----	Treasurer

THE PARISIAN

EL CIRCULO ESPANOL

Miss Betsy Brooks Woodford is sponsor of the Spanish Club. The students study the customs, language, government of the Spanish people, and the expansion of Mexico through the Western United States and South America.

During the year programs are given to make us better acquainted with our Spanish friends. On Pan-American Day, we give a program for the entire high school. During this program, we sing songs, and give short talks on each of the Pan-American countries, telling of their habits, products and resources.

The officers of the Spanish Club are:

George Doyle	-----	President
James Hilke	-----	Vice President
H. R. Kenney	-----	Secretary
Billy Gillespie	-----	Treasurer

LE CERCLE FRANCAIS

The French Club, under the direction of Miss Betsy Brooks Woodford, consists of thirty-four members. We study the language, dress, customs, government, legends, fairy tales, and plays of the French.

In the early part of the year, the second and third year French and Spanish students had an initiation program for the French 1 and Spanish 1 students. These students had to undergo many embarrassments, and on the last day, they dressed in freakish looking costumes. After the parade of these students, a party was held. Prizes were awarded for the most unique costume and for the best sport.

During the year, the French Club has programs consisting of French plays and songs.

The officers of the French Club are:

Betsy Dodge	-----	President
Billy Maher	-----	Vice President
Annelle Miller	-----	Secretary
Bobby Blake	-----	Treasurer

JUNIOR AND SENIOR LATIN CLUB

This year the Junior and Senior Latin students formed the "Comitia Superiora."

The following officers were elected:

Consul: Nancy Lu Hudson
Praetor: Bernice Smart
Quaestor: Bill Boyd
Scriptor: Mary Helen Galloway

This kind of formation copies that of the Roman state, and its "contiones," or assemblies, illustrate democracy in action.

The motto of the club, adopted when the club was first formed, is "Esse quam videri."

The club chose as its song the student "Gaudeamus Igitur."

Short playlets, sketches, and materials on Roman life are presented at its meetings.

A second Latin organization has been formed for Sophomore students. Their officers are as follows:

President	-----	Henry Hill
Vice President	-----	Phyllis Fisher
Secretary	-----	Ann Webb Day
Treasurer	-----	William Hudnall

The Latin clubs are under the direction of Miss Gilbert Lavin.

COMMERCIAL CLUB

The Commercial Club, under the capable supervision of Mrs. Nan K. Shaw, is one of the foremost organizations of the Paris High School. More and more students take advantage of the work offered and this year the club consists of fifty-nine members. To be a member, the student must take either shorthand, typing, or bookkeeping.

The Commercial Club has its one important event during the Christmas holidays. At that time, the students prepare gifts for needy persons or sometimes devote all their effort toward making one person have a happy and nice Christmas.

The officers are:

President:
Jimmy Mitchell

Vice President:
Bernice Smart

Secretary and Treasurer:
Ann Lura Hayden

HOME ECONOMICS CLUB

The Home Economics Club, under the sponsorship of Mrs. Dan Peed, is one of the most popular in the school. It consists of the girls in Junior and Senior High who study cooking, sewing, and how to get along in the school, community, and the home.

The Home Economics Club usually sponsors tea dances throughout the year, and on Activity Day, they participate in the program by having a style show exhibiting the clothing made in the spring clothing unit.

The following officer are:

President:
Sue Jane Lykins

Vice President:
Mattie Eads

Secretary and Treasurer:
Ann Thomas Blake

Sally Kate: Who gave you those black eyes?

Joe: Nobody gave them to me. I had to fight for them.

Teacher: Billy, why are you shivering? The weather is warm.

Billy Gillespie: Yes, but there's a zero on my paper.

Billy Kimes: What is the date, please?

Miss Noland: Never mind the date. The examination is more important.

Billy Kimes: Well, I wanted to have something right on my paper.

Nancy Smith: What did Franklin say when he discovered electricity in lightning?

Helen Lawrence: Nothing, he was shocked.



PARIS BETA CLUB

Bernice Smart
President

George Wilder
Vice-President



Anneile Miller
Secretary

Martha Ruggles
Treasurer

Miss Gilbert Lavin, Sponsor

The Paris Beta Club is a chapter of the National Honorary Scholastic Beta Club and the name itself tells you that this Club chooses its members for their high scholastic attainment and because they have displayed worthwhile character and leadership.

In Paris, our Beta Club acts as a service organization in the school and community. It carries on a daily program to provide assistance for the school librarian. Beta members sell tickets to the basketball games, both during the season and for the tournaments. They are occasionally called upon by civic groups to assist in community affairs.

The Beta Club has an activity program for its own members. The Beta dramatic effort of the season was the presentation of James W. Barrie's "Shall We Join The Ladies?" We are still anxious to solve the mystery of the play.

Nancy Lu Hudson has been Kentucky State Secretary for the year 1946-1947 and acted in that capacity at the April convention held in Louisville at the Kentucky Hotel.

BETA MEMBERS OF 1946-1947

Ralph Vogler
Nancy Lu Hudson
Anneile Miller
Mona Lawhorn
Martha Ruggles
Bernice Smart

Betsy Dodge
Billy Gillespie
Jimmy Mitchell
George Wilder
Nancy Watlington
George Doyle

Mary Helen Galloway

Atwell Adair
Bill Boyd
George Varden
Nancy Hukill
Bobby Blake
Marie Caslick

James Hilke
Sam Clay
J. R. Jones
Nellie Bishop
Ann Lura Hayden
Bobby Thompson



PARIS HIGH SCHOOL BAND

The Paris High School Band, this year, is largely made up of new members. These new members showed both ability and interest and along with the older members of the band made a good showing in the performances of the band at the basketball games. The band is under the direction of Mr. LaBach, who is assisted by Miss Ellen Blanding.

The band members are:
 Director—Mr. Parker LaBach
 Drum Major—Doris Williams
 Sponsor—Kent Hill
 Clarinets—Willie Jean Wells
 Ann Blake
 Gene Fronk
 Barkara Insko
 Cary Clay
 Dianne Arnsparger
 Harry Boling

Malcolm Doyle
 Lucy Blanton
 Senior Majorettes—Betsy Dodge
 Nancy Lu Hudson
 Junior Majorettes—Mary Helen Galloway
 Helen Haddix
 Cornets—William Boyd
 Alan Vogler
 Kenneth Garrison
 George Ragland

French Horn—Frank Johnston
 Bass Horns—J. R. Jones
 William Wornall
 Cymbals—Helen Caywood
 Drums—Sally Kate Bobbitt
 Jerry Jordan
 Tommy Herzog



MAJORETTES



GIRLS' GLEE CLUB

The Girls' Glee Club under the direction of Miss Ellen Blanding consists of the following:

Sally Kate Bobbitt	Ruth Hilke	Fobbie McCord	Jane Smith
Ann Blake	Kent Hill	Eunice McDaniel	Jean Smith
Helen Caywood	Agnes Himes	Barbara McConnell	Fandora Templin
Elaine Cohen	Nancy Lu Hudson	Agnes McKenzie	Nancy Tobin
Beulah Collins	Golda Hutson	Annelle Miller	Mary Turpin
Ann Day	Mary Catherine Ingels	Rebecca Myers	Ann Vickers
Betsy Dodge	Ruth Jefferson	Alleen Owen	Nancy Watlington
Ruby Farris	Jacqueline Jordan	Ernestine Rakes	Ann Elizabeth Watson
Phyllis Fisher	Jerry Jordan	Martha Ruggles	Doris Williams
Delores Galbraith	Dudley Keller	Helen Sadler	Mattie Williams
Mary Helen Galloway	Marguerite W. Kuster	Doris Schnitzler	Willie Jean Wells
Imogene Green	Mona Lawhorn	Barbara Shriver	Helen Woodford
Felen Haddix	Sue Jane Lykins	Alexandria Simos	
Ann Lura Hayden	Ida Jane Maye	Bernice Smart	

ACCOMPANIST: NANCY HUKILL

Girls' Glee Club Activities
Paris High School Commencement—1946,
Program—"The Lord's Prayer"—Malotte.
"Serenade"—Rombert.
Faculty Reception for Parents.
Christmas Program:

Trio from G. G. C.
Mona Lawhorn
Betsy Dodge.
Nancy Lu Hudson.
Accompanist: Annelle Miller

Activities:
Faculty Reception.
Fall Festival.
Delta Kappa Gamma—Berea, Ky.



BOYS' GLEE CLUB

The Boys' Glee Club, under the direction of Miss Ellen Blanding, consists of the following:

Atwell Adair
William Blanton
Sam Clay
Albert Clough
Clyde Boaz

Robert Downing
Charles Fryman
Ellis Garrison
James Hilke
Harold Humphries

James Jackson
J. R. Jones
H. R. Kenney
William Maher
Billy Bruce McMahan

James Mitchell
Harry Robin
Rex Schalch
Jack Steele
George Wilder
Billy Gillespie

Accompanist: Marie Caslick

Activities—Christmas Program
"I Wonder As I Wander"—Niles
"Sheep On the Hillside"—Bohemian Carol

IMAGINE

Imagine a Virgil Book with no words written between the lines.
Imagine Ralph not confused in French Class.
Imagine Mrs. Shaw's students chewing.
Imagine all Seniors with "A" in English.
Imagine Miss Isgrig with her hair down.
Imagine Miss Lavin praising Albert Clough.
Imagine Calvin here on time.
Imagine pupils sedately leaving at noon.
Imagine Miss Clotfelter on a date.
Imagine a rally without Doris Ruth.
Imagine Bobby Ewalt finishing a library book.
Imagine Earle Turner without a loud tie.
Imagine Betty Clayton without a boy-friend.
Imagine the laboratory after Bobby Karkpatrick leaves.
Imagine Marguerite Kuster's report card without any I's.



SPEECH CLUB

PUBLIC SPEAKING

A number of Juniors have entered the individual speaking contests this year. The first speech tournament of the year was held at Flemingsburg, March 8, to which we sent three speakers. The following students participated in this contest:

Mary Helen Galloway, who gave an oratorical declamation; Marie Gustin Caslick, who gave a dramatic reading; and Ann Lura Hayden, who read poetry. After a very successful trip this group of speakers went to Richmond for the regional contest. The same speakers entered this contest with the addition of William D. Boyd, who gave a dramatic monologue. This was the extent of the contest for the year 1946-47 which proved to be a very successful one.

President—Henry Hill
Vice-President—Phyllis Fisher

Secretary—Ann W. Day
Treasurer—William Hudnall

DEBATING TEAMS

The debating teams under the direction of Miss Zerelda Noland met with such teams as Henry Clay, Frankfort, Wilmore, and Georgetown before taking part in speech tournaments at Flemingsburg and Richmond. After the speech contest at Flemingsburg we went to Richmond for the regional tournament.

The following students are members of the National Forensic League:

MEMBERS

Billy Boyd
George Varden

Frankie Johnston
Billy Gillespie

Phyllis Fisher
Bobby Blake



SENIOR HIGH CHEERLEADERS

Seniors

Bernice Smart
Doris Williams

Juniors

Sally Kate Bobbitt
Ruth Jefferson

Sophomores

Ruby Farris
Barbara McConnell

Pianists

Ernestine Rakes
Martha Ruggles

Mascot

Hallie Brophy

The Senior High Cheerleaders have shown their faith throughout the years to the Basketball and Football teams. At and before each game, they were there to lead the cheers and the pep rallies. They have shown their pride of the teams and have urged on the teams with their undaunted spirit.

We are proud of our cheerleaders, and we respect their fighting spirit. Not once did they give up, but kept up the yells until the last minute.

Our cheerleaders have been a credit to the school by their courteous and friendly manner to the visiting teams and their roaters. Not once did they show an unsportsmanlike attitude, but were courteous and friendly to each group.

To our cheerleaders we take off our hats, and also to little Hallie Brophy, our mascot, who added to the entertainment of all by her unusual talents.

Miss Overstreet: I'm teaching your daughter first aid.

Mrs. Hudson: You'd better teach her second aid. She's too slow to get there in time to use first aid.

Student (eating in cafeteria): Mrs. Peed, I wish I had eaten here two weeks sooner.

Mrs. Peed: Oh, fine. What makes you say that?

Student: The eggs would be two weeks fresher.

Ralph: What does this note on my paper say?

Miss Noland: It says for you to write more plainly.

Tommy Herzog says that he just likes two kinds of girls—blondes and brunettes.



SENIOR CALENDAR

SEPTEMBER

46 Seniors start to school.
First football game—with Lawrenceburg.

OCTOBER

Fall Festival.
Constitution Day Program—Chapel Choir provided the music.
Beta Club Program.
Someone took the school steps out.
The Fries threw a firecracker in Miss Noland's room.

NOVEMBER

First basketball game—with Headquarters.
Parent-Teacher Tea.
We are dismissed for Thanksgiving Holidays.

DECEMBER

Choir sings for Rotary Club.
The first wedding in the class of 1947. Marguerite keeps up the tradition.
Christmas Program at school, after which we are dismissed for one of the longest ones we have known.

JANUARY

Miss Noland is almost hit by a snowball intended for Bruce Fudold.
We suffer through exams.

FEBRUARY

Chapel Choir sings at the Baptist Church.
Beta Club Play, James M. Barrie's "Shall We Join The Ladies?"
Miss Clotfelter wears two different kinds of shoes to school.
Joe Bodkin appears with a black eye.
We play our last C.K.C. game with Cynthia. We stood in line from 4:30 until 6:00.

MARCH

Chapel Choir sings at Methodist Church at youth program.
The tournaments are here at last. Some lucky students get tickets to the state tournament.
Paris wins District by defeating North Middletown, Carlisle, and M.M.I.

APRIL

Beta Club Convention at Louisville.

MAY

We all had fun in giving the Senior Play.

JUNE

The Junior Prom.
Class Night.
Graduation Day.

SENIOR POEM

On the third day of last September
We answered the Senior call,
Our class was very large in number,
And in quality beat them all,
To prove that we're exceptional,
Individually, or as a whole,
We shall introduce to you our members,
All forty-five, who compose the roll.

For officers, first comes Bernice Smart,
Popular President of our class;
Sue McCann, Vice-President,
A very well-liked lass;
Bruce Fudold, our secretary,
Is capable as he can be,—
And Billy Gillespie, Treasurer,
As good as you'll ever see.

There's Annelle, an editor-in-chief,
In whose career we've firm belief;
Marguerite has reached her ambition,
Cleaning and cooking, a steady position;
Willie Jean is full of fun,
With a disposition bright as the sun.

Now, we have Bobbie, short as ever,
Bright-eyed and gay, and very clever.

Rex Schalch, so stalwart and strong,
Excels in humor and minstrel song.

Albert Crump, is shy to all,
But oh, how he handles a basketball.

Martha Ruggles knows her position,
She wants to be an X-ray technician.

Bobby Ewalt, who indifferent seems,
But in spite of himself has rosy dreams.

Ellis and "Bebie", both rather tall,
Have places in the hearts of all.

Concerning Ernie, we all admit,
For art she has a clever wit.

Nancy Lu Hudson is capable, too,
Her talents are many, her faults but few.

Doris Ruth laughs her life away,
Through every hardship, lesson or play.

Eetsy Dodge, so feminine and sweet,
Is very graceful, and also neat.

George Wilder, in art surpasses,
His talent's so great, he's blind to the lasses.

Stanley and Stuart, well liked by all,
Really love to play football.
Mary Catherine, we know will be,
Excellent in History.

And Joe's an easy-going guy,
Never letting chances pass him by.
Ann Blake, who is known by all,
Is liked by our hero in basketball.

Jack Lucky who works for his father,
Is always quiet and never a bother.

Nancy Watlington who lives on Ruddles Mills Road,
Is as quiet and contented as a little toad.

Calvin Greenup, our Ping Pong King,
Will never succeed if he has to sing.

Mathematics someday Mona will teach,
Then her ambition she will reach.

Tommy Herzog likes to dance,
And with blonde cheerleaders, takes a chance.

Rissie Pennington with eyes of blue,
Will always be ready to greet you.

The mayor of Paris soon will be
George Doyle, as we will all agree.

Betty Clayton loves to play ball,
And talk to boys out in the hall.

Bobby Harris can jitterbug;
You should see him cut a rug.

Our band sponsor for this year,
Let's all give Kent Hill a cheer.

And there's Ralph Vogler, who's sure to pass,
Because he stands out in his English class,
Kimes, "Kirk," and Lathram in life's long game
May yet laugh their way to glory and fame,
While "Mitch" by means of his bright, happy air
Will throw off all trouble and every care.

Nancy Smith takes chemistry,
A successful nurse she's sure to be.

Helen and Agnes are domestic in style,
And Agnes McKenzie is known for her smile.

Betty McCord, though sweet and shy,
Has a heart full of friendship, you cannot deny.

At last we've brought our class to an end,
Good luck and success to you do we send.

So, we'll bid you farewell, Alma Mater, so dear,
But we'll always be with you to love and to cheer.

JOKES

A Sophomore on his English Exam:

"I did my best on this here test,
Few could do much better,
But here and now
I takes my vow,
I copied nary a letter."

Miss Noland: Give me a sentence with an object.

Charles: The teacher is a beautiful woman.

Miss Noland: What's the object?

Charles: A good grade.

Mr. Leach: Is it perfectly clear

Sophomore: As clear as mud.

Mr. Leach: Well, then, that covers the ground.

Miss Isgrig: First I'll take some sulphuric acid, then I'll take some chloroform.

Voice from behind: That's a very good idea.

Miss Clotfelter: Who was King of England in 1924?

Agnes McKenzie: George was his first name and his last name isn't in the book, but it begins with V.

Miss Lavin: That's the third time I've seen you looking on Wille's paper.

Smart Pupil: I know. His writing is horrible.

Ann Thomas: I want to buy a pencil.

Mrs. Shaw: Hard or soft

Ann Thomas: Hard, it's for a stiff exam.

Miss Woodford, very distinctly: Please turn to page two hundred and fifty—2-5-0.

Ralph: What page?

Miss Woodford loudly: 2-5-0.

Ralph, very confused: Which book?

Miss Lavin: Sue, what makes you think Caesar was so strong?

Sue McCann: Why, the book says he pitched his camp across the river.

As Shakespeare sees High School:

Freshman	-----	A comedy of errors
Sophomore	-----	Much ado about nothing
Junior	-----	As you like it
Senior	-----	All's well that ends well

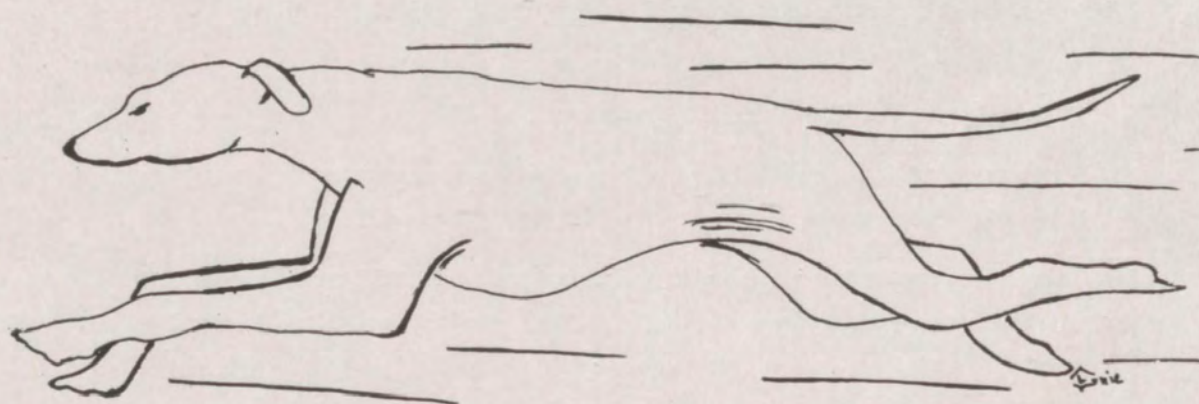
Freshman: I've lost my paper.

Sophomore—Mine's at home.

Junior—I'll get it next period.

Senior—Paper? Hummmmm.

S P O R T S



SENIOR ATHLETES

Clyde Boaz—A rebounding leader who played center for the Greyhound basketball squad and made the all district team in tournament play in '46. Clyde was also one of the heavy men in the football line at guard position.

Albert Crump—Captain Aobie was a natural leader and one of the scrappiest guards to play on the basketball squad. On the Greyhound football team his stellar performances in the backfield received an honorable mention for all-state.

Rex Schalch—"Never say die" must have been Rex's motto as he carried the pigskin for the Greyhounds after receiving injuries in the game. He was a driving half-back who was hard to stop.

Tommy Herzog—As the center on the Greyhound football squad, Tommy was a player who excelled in defensive work. Many opponents run was stopped short by his quick tackles.

Joe Bodkin—Joe played at quarterback to call the signals for the football team and proved to be a good ball handler. He was also a fighting guard on the Greyhound basketball squad.

Ralph Vogler—Ralph played his first year of varsity football as a senior but proved his abilities in the backfield and came through well for the Greyhounds.

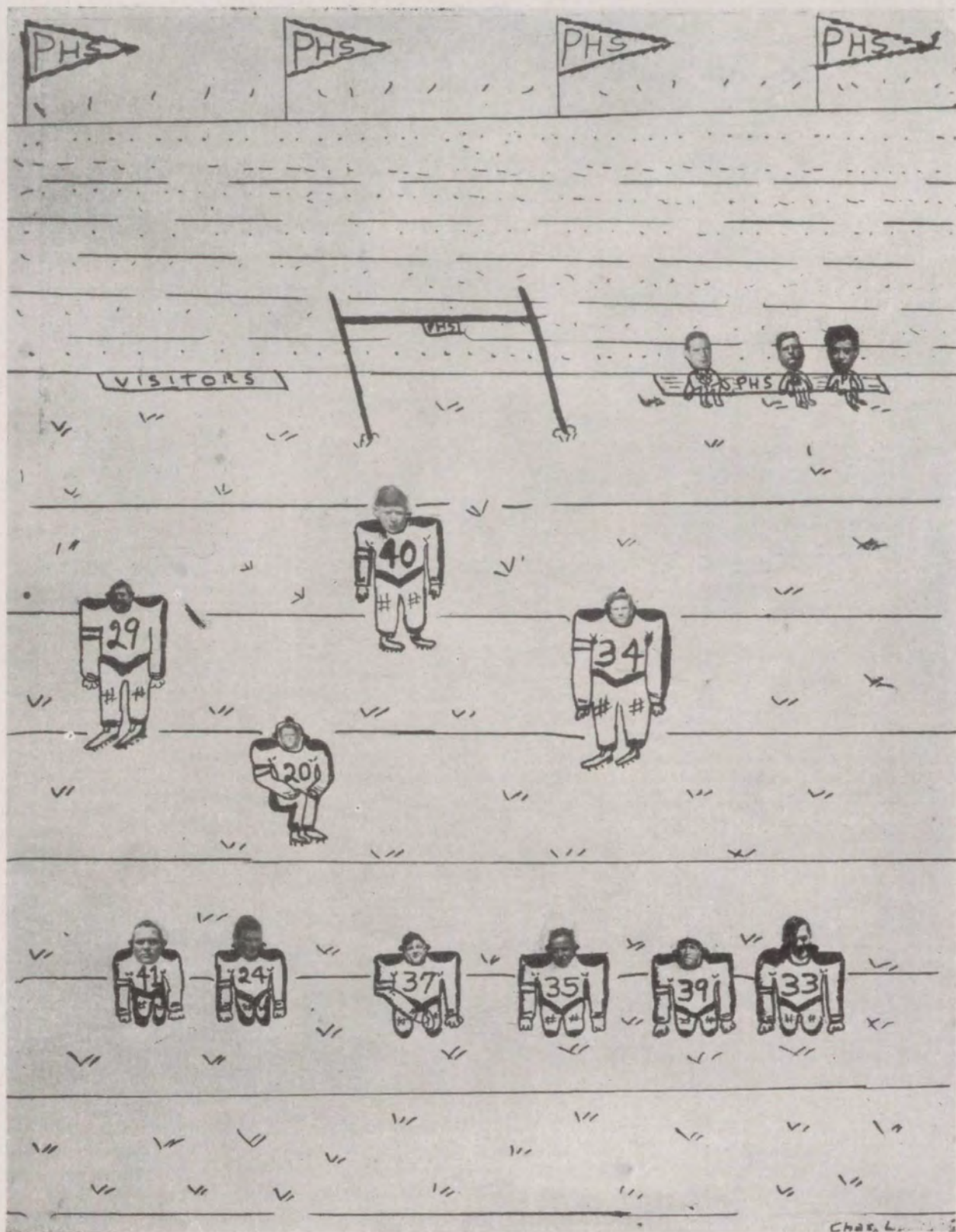
Bruce Fudold—Bruce returned to his position in the line after trying manager the preceding year for the football squad. He was always ready to do his part when called upon.

George Doyle—George was one of the key men in the Greyhound backfield and the coach didn't have to worry about him holding his share of the load. George also saw action as forward on the basketball varsity.

Ellis Garrison—Known as "freight train" to most of us, he was one of the big factors in the strong line the football squad boasted. Ellis was a rough football player and was always in there fighting.

Billy Kimes—Billy played end on the Greyhound football squad and although he wasn't one of the heavier men in the line, he made up for it in ability.

George Wilder—Although George did not make a letter in school he will be remembered for his determination and spirit in basketball.





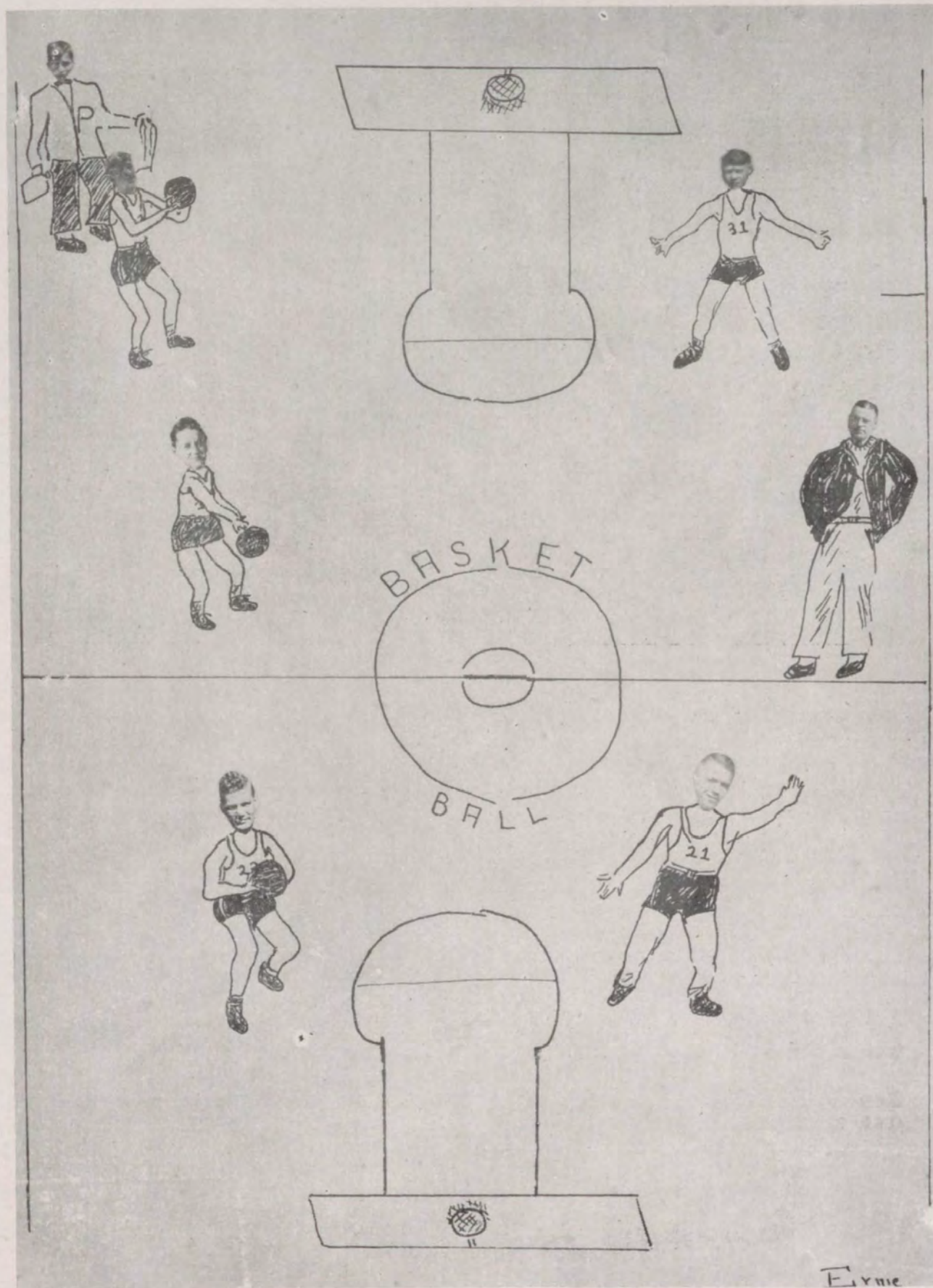
FOOTBALL TEAM

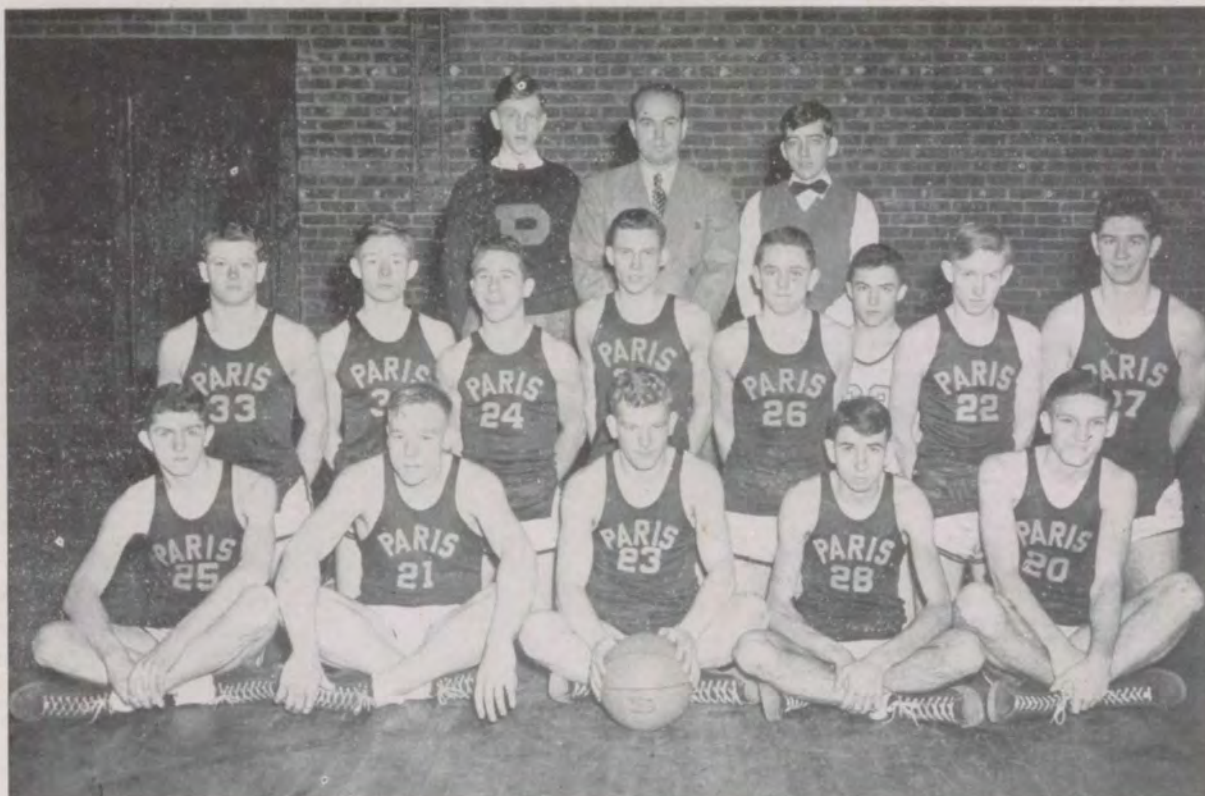
The Greyhound football squad had little to boast about in victories this season but we were mighty proud of their fighting spirit during the season. A tragedy happened late in October when we visited Mt. Sterling for a night game and we lost one of our best team-mates from injuries in the scoreless game. After this misfortune we were almost ready to cancel the remaining games because so many players were compelled by their families to quit the squad. However the players left on the squad begged to fill out the schedule and they plugged up the gaps the best they could.

We went on to play with a lot of courage and to end up our season by holding Frankfort, one of the better C. K. C. outfits, to a hard earned 7-0 decision. We think these players deserve praise for their determination and hardships faced for the Orange and Black.

Our first game was played at home with Lawrenceburg as our guests. Boaz blocked a kick and covered it for a touchdown but the visitors took the decision 12-6. After traveling to Carlisle for a night game and our second loss, we trekked to Georgetown with great hopes. But the hot sun that afternoon seemed to melt our hopes as we fell victims 19-6 to the Buffaloes. At Cynthia we started out like a steam engine to lead them 12-6 during the first half but they came back to win 18-12. With a muddy field at Mt. Sterling we settled for a scoreless tie. Nicholasville was our first big victory as we trounced them 19-0 with Schalch passing for one touchdown and running over for another. Winchester proved too powerful on their own field as they registered a 12-0 verdict over a scrappy Greyhound team. In the Shelbyville game one of our big linemen intercepted a lateral near the goal line but thought it was a helmet he had caught and didn't bother to run. The final game with Frankfort proved a thriller with the Panthers getting away a luck pass for a touchdown and a 7-0 verdict. The Greyhounds held back a strong Frankfort attack most of the game but yielded once.

Members of the squad were: Bill Barlow, end; Bruce Fudold, tackle; Stewart Freye, guard; Billy Peters, center; Atwell Adair, guard; Clyde Boaz, tackle; Gene Fronk, end; Joe Bodkin, back; H. R. Kenney, back; Abbie Crump, back; Rex Schalch, back; George Doyle, back; Larry Hennessey, back; Charles Fryman, back; Tommy Herzog, center; Bill Kimes, end; Ralph Vogler, back; Ellis Garrison, tackle; Bruce Miller, end; Sam Clay, tackle; Bobby Thompson, guard; Preston Thompson, end. Managers: Calvin Greenup and Jimmy Mitchell.





BASKETBALL TEAM

The 1946-47 basketball squad, under the able leadership of Coaches Bill Brophy and Sergius Leach, turned out as one of the top teams of the C. K. C. Starting the season by trouncing a previously undefeated Headquarters, they went on to win six straight games, until upset by Bracken County at Brooksville.

Losing only four C. K. C. games out of fourteen attempts, the Greyhounds dropped a single game with Winchester and split two games each with Cynthiana, Frankfort, and Mt. Sterling in the conference, and Clark County in two non-conference games. Averaging better than 42 points per game to their opponents' 35 points the Paris team led the conference in scoring ability despite illnesses and injuries which often cut down the squad. They ended their regular season by trimming a tough Northern Kentucky squad from Fort Thomas' Highlands, 44 to 36.

The District Tournament was held at Paris, March 5, 6, 7. Paris opened by defeating North Middletown, then went on to defeat Carlisle and M. M. I. to claim the district championship.

The members of the squad were Albert Crump, Clyde Boaz, Billy Bruce McMahan, Jack Steele, Bobby Blake, Billy Peters, Joe Bodkin, Billy Barlow, Atwell Adair, H. R. Kenney, Henry Hill, George Doyle, George Wilder, Managers: Billy Maher and Charles Latham.

THE PARISIAN

PARIS		OPPONENTS	PARIS		OPPONENTS
55	Headquarters	17	43	M. M. I.	20
55	Corinth	28	28	Clark County	39
46	Clintonville	17	62	Frankfort	46
50	Lexington Latin	34	48	Carlisle	44
43	Carlisle	19	39	Clark County	32
38	Cynthiana	35	32	Frankfort	37
43	Brooksville	46	50	Georgetown	34
54	Nicholasville	20	38	Shelbyville	34
35	Stearns	24	27	Mt. Sterling	28
28	Winchester	47	35	University High	23
49	Mt. Sterling	27	27	Cynthiana	35
57	Georgetown	29	44	Highland High	36

THE GREYHOUND COACHES

One of the most important factors in both basketball and football during the past season was the coaching staff who led the Greyhound teams through both victory and defeat. Coaches Brophy and Leach deserve praise for producing a winning basketball quintet that had a very successful season and went far into tournament play. Coach Herbert with the aid of Brophy as line coach didn't have a very victorious football squad but his Greyhound team was always fighting. Mr. Barr coached both football and basketball in Junior High and we were glad to see a Junior High football squad again. In a game it may be the player that scores the points but we believe guidance from the bench also deserves much praise.

A FOOTBALL GAME

It was the time to start the game
The teams were ready to play,
The captains were upon the field
We lost the toss that day.

We kicked the ball, the game was on
They fumbled on the play,
We got the ball and this set up
Our first touchdown that day.

We kicked again, they tried to run
But they could make no gain.
Rex threw a pass, that Barlow caught
A touchdown was our aim.

We scored again, the crowd did roar
An upset it appeared
They caught the ball, they scored 'round end.
O how our students jeered.

The second half would be the test,
We were eager to begin.
But they began to pass the ball
And soon began to win.

We got the ball again at last
The time was running out.
We fought for every yard of ground
A tie, we hoped, no doubt.

At last this football game did end
How bravely had we fought.
Our coach was pleased because at last
The victory had we sought.







JUNIOR HIGH FACULTY

Mrs. Maude Briggs—A.B., University of Kentucky; English.

Helen Hunter—A.B., University of Kentucky; M.A., Columbia University; History

Mrs. Helen D. Hazelrigg—A.B., University of Kentucky; M.A., Columbia University; History

Agnes Purnell—A.B., University of Kentucky; Mathematics

Marion Mitchell—A.B., Randolph Macon Woman's College; M.A., Columbia University; Geography

Alice McClintock—A.B., Georgetown College; M.A., University of Michigan; Latin

Daniel Barr—A.B., Transylvania College; Science and Mathematics

Eleanor Payne—A.B., Berea College; English and Health

FRESHMAN



CLASS ROLL

Ben Ardery
Elsie Baird
Barbara Bishop
John Ballard
Lorene Buchanan
Louise Brown
Barbara Burns
Cary Clay
Marion Clay
Sylvia Lee Cohan
Doris Conners
Junius Cooper
Mary M. Craig
Marian Cutler
Ann M. Doyle

Mattie Eades
Betty J. Edgington
Mary D. Everman
Rosalee Fagin
Joan Fishback
Will G. Florence
Margie Forsythe
Kenneth Garrison
Robert Garrison
Reville Goss
Billy Hall
Patry Harney
Reva Hill
Price Huston

Ellis Hukill
Robert Hunter
Gaylena Jones
Lucille Jones
Betty Kelly
Rilla Kenny
Ruby Langfels
Betty Lawrence
Dorothy Laycock
Christine Leach
Mary Ann Lykins
Sadie Mansfield
Homer Marshall
Dor's Miller

George Bruce Miller
Betty Jo Mitchell
Patsy Sue Mitchell
Jane Myers
Tommy Mitchell
Elizabeth McClain
Burns McCord
W. C. McCord
James Pratehr
Freda Purcell
Bobby Richardson
Marian Robertson
Barbara Scott
James Shelton
Jo Shropshire

Lee Shrout
Joe Singleton
Billie Shriver
Harry B. Smart
Martha Stewart
Betty Jo Tune
Geraldine Turner
Marshall Warren
Helen Watson
Eddy Wells
Gene Williams
Billy Wilson
Lucinda Wilson
Billy Wornall

THE FRESHMAN CLASS OF 1947

The Freshman Class of '47 is a carefree one full of tricks
And had many activities such as talking in the halls,
Disturbing the teachers, and writing on walls.
The basketball team was sure a whiz
And the coach, Mr. Barr, loved an algebra quiz.
There was also football, but the games were too few,
And the cheerleaders had their good points, too.
The girls had Home Ec. where they learned to cook
And do other things besides writing in their books.
There were also many clubs like the Orange and Black,
The Band, Junior Chorus, and a large "Wolf Pack."
But the Freshman Class of '47
With all its checkmarks and comical tricks
Was surely a good one after all
Even the teachers were on the ball.



CLASS OFFICERS

President	-----	Louise Brown
Vice-President	-----	George Bruce Miller
Secretary	-----	Patsy Harney
Treasurer	-----	Christine Leach

CLASS HISTORY

The Freshman Class of '46-47 is composed of seventy-six members and embraces a wide variety of interests and activities. A high standard of scholarship is steadily maintained in this group, with about 22 % of the enrollment on the monthly honor rolls. Equally fine is the class attendance record which has been above 95 per cent all year.

For those who are musically inclined, there is the Junior Chorus capably led by Miss Ellen Blanding, and Band under the skillful direction of Mr. Labach. The Junior Chorus gave a program of Christmas music before the holidays, and the Band has performed several times at our local basketball games.

The Ninth Grade girls receive athletic training from Miss Overstreet. This year for the first time in over three years, a Junior High Football team was organized by Mr. Barr, who also teaches Science and Algebra. A large portion of both our Junior High Football and Basketball teams are made up of Ninth Grade Boys. The Basketball team has had an exceptionally good season, winning 19 out of their 25 games. The team has been greatly aided by the local support of our fine Junior High cheerleaders.

Many Freshman girls are taking Home Ec. with Mrs. Peed. The first semester was spent on sewing, and the second on cooking.

The whole class has a weekly music period. This year Miss Blanding is concentrating on folk songs from different parts of the country.

There is a fine spirit of cheerful cooperation within the class, inspired, no doubt, by the excellent example and leadership of the faculty. It has been a pleasant and rewarding year for one and all.

EIGHTH GRADE



EIGHTH GRADE CLASS ROLL

Nelson Bishop
Dudley Boyle
Bobby Burden
Eugene Cain
Phyllis Caywood
George Collins
Frances Conner
Willis Crocket
Harl Crump
Marylou Dockenbrode
Loraine Donathan
Malcolm Doyle
David Feld
Pilly Fletcher
Everett Goodpaster
Nancy Greenup
Roberta Hadley
Barbara Hazelrigg
Betty Hoilar
Oliver Linville
Anna McCord
Roger Maher

Jean Mansfield
Carolyn Marshall
Alice Myers
Harold Myers
Barbara Prather
Wilma Reynolds
Billy Robbins
Helen Roe
Ann Royse
Tommy Sherlock
Kelly Smith
Nina Wells
Diane Arnsparger
Ruby Arnsparger
Simon Bently
Fred Burns
Harry Boling
Evelyn Campbell
Zeke Clay
Miller Doyle
Jane Eades

Hazel Green
Paul George
Leo Harris
Larry Hennessey
Louis Herzog
Billy Joe Hill
Jerry Jackson
Evelyn Johnson
Barbara Jordan
Robert Jordan
Dorothy King
Leslie Linville
Donald McCord
Betty Ruth Mastin
Martha Mattox
Roy Parker
Robert Thomas
Barbara Turner
Wilma Turner
Marriew Wells

Miss Isgrig: Heat and air rise to the top of the room. Seeing Bobbie McCord gawking out the window, she asked, Bobbie, where is the warmest place in the room?

Bobbie: (stammering): Uh, by the radiator.

Miss Isgrig: When do leaves begin to turn?

Willie Jean: The night before examination.



EIGHTH GRADE CLASS OFFICERS

President	-----	Zeke Clay
Vice-President	-----	Louis Herzog
Secretary	-----	Barbara Jordan
Treasurer	-----	Frances Conner

THE EIGHTH GRADE CLASS OF '47

In September we anxiously awaited the beginning of a new era in our lives, our entry into the second year of Junior High School. Being wiser and older we knew better the art of keeping our possessions intact as we roved from class to class, from auditorium programs to music and from physical education to rallies. We of the Eighth Grade are the "in-betweens" with neither the sophistication of the Ninth Grade nor the lack of polish of the Seventh. This scene has passed rapidly and we are justly proud that many of our students have set examples of real worth.

Since September our class has enrolled seventy-seven students. Each class has its own officers. Among the students in our class we are represented in the various extra curricular activities. We have a large number of students in Junior Chorus, we have students in 4-H Club work, and several members of the band. Our class contributed to programs of health and welfare, we helped in Red Cross work and gave generously to the March of Dimes. We loyally supported our athletic program by buying football and basketball tickets and we were well represented at all games. Our attendance has been good.

Our class is now well established and well represented in all school activities. We feel confident that our class will be an outstanding class when we finally reach the goal in 1951.

SEVENTH GRADE



SEVENTH GRADE CLASS ROLL

Susan Allen	Carrie Farris	Edward Lyons	Wayne Shumate
Mary Sue Bell	Eruce Forsythe	Thelma Mann	Delbert Smith
Lucy Blanton	Billy Hall	John Mattox	Virginia Stanforth
Tommy Bowling	Jo Ann Henson	Eugene Maxwell	Billy Talbott
La Faun Brown	Wm. Walter Herndon	Nelda Maye	Brooks Tally
Mary E. Euchanan	Fatsy Hill	Julian McCord	J. D. Thomas
Eula Buckler	Bobby Hill	Archie Mitchell	Tommy Thompson
Phyllis Butler	Donald Honican	Faye Moreland	Claude Vaughan
Juanita Caswell	Peggy Hudnall	Jimmie Myers	Glenn Wagoner
Bobby Caywood	Martha Hukill	Freddie Nicholas	Jo Wagoner
Harold Clinkenbeard	Elizabeth Jones	Henry Clay Owen	Martha Jean Wagoner
Gerald Combs	Carolyn Jordan	Margaret Paynter	Earl Waugh
Veretta Combs	Doris Larkin	Jean Pitts	Billy Wells
Charles Cook	Fred Laycock	Evelyn Ryan	Louise Whitt
Ruby Courtney	June Lawrence	Wanda Robbins	Charles Wigglesworth
John Crump	Anne Lewis	Nelson Sadler	Colores Williams
Charlotte Curtis	Charlotte Lemons	Charles Scott	Earl Williams
Blanche Dockenbrode	Billy Lovell	Betty Jo Sharpe	Bobby Wills
Louis Emmons	George Lucky	Mary Jo Sheeler	Billy Pat Wilson
		Helen Shelburne	John Paul Witte

In September the Seventh Grade students eagerly entered school. This was to be a new experience for them. They were now entering Jr. High School. They would study different subjects and would have several teachers. There are 78 pupils in the Seventh Grade. These boys and girls have taken part during the year in football, basketball, as cheerleaders, and in the band.



CLASS OFFICERS

President	Douglas Lawhorn
Vice-President	Martha Hukill
Secretary and Treasurer	Henry Clay Owen



CHEERLEADERS

As the Junior High Athletic teams took their places on the football field and on the hardwood, the Cheerleaders of Junior High did their best to show them they were working for them in every contest. Needless to say there was little they could have done had it not been for the loyal support of their classmates who sat in the cheering section. The teams always knew that the students were proud of them and were always with them whether they won or lost their games.

The big Orange "P" that the cheerleaders wore stood for Paris, to be sure. It, too, stood for the pride that they had for their team, and also for the persistence on the part of their boys. Paris Junior High, pride, persistence and pep—all of these went to make up the cooperative spirit that led to a successful year in athletics.

CHEERLEADERS

Marjorie Forsythe
Marion Clay
Barbara Turner
Carrie Farris

Patsy Fay Harney
Betty Jane Lawrence
Dorothy King
Margaret Paynter

Barbara Jordan
Pianists:
Mary D. Everman
Elise Baird



THE ORANGE AND BLACK SERVICE

The Orange and Black Service originated in the spring of 1928 at the suggestion of the Junior High Campfire Organization, sponsored by Miss Ethel Congleton, then head of the Junior Latin Department.

This ceremony is one of the most impressive and important programs of the year. It is a time when the outstanding students are honored by the rest of the students and the faculty. At this program, at the close of a talk by an outstanding speaker, the honor students are selected by the faculty and asked to sign their names in the Orange and Black Book along with those who have gone on in Senior High and colleges as Honor Students of their classes and are becoming great successes in business and professional life.

The Orange and Black Service is an attempt to stimulate a love for high ideals, and attempt to develop traits that make worth while citizens. The students, chosen by the faculty, must have shown throughout the year a willingness to cooperate and to achieve. A high scholastic standing is required; an attitude of loyalty and leadership in all the programs and activities of the school; a character development which shows that honor and ideals have become a part of their lives. To be chosen in an honor greatly cherished by the students. Few fail to live up to the trust placed in them.

PRESENT MEMBERS

CLASS OF '49

Ruth Hilke
Ruby Farris
Elaine Cohen
Ann Webb Day
Phyllis Fisher
Henry Hill
Bill Blanton
John Anderson
Frank Johnston

CLASS OF '50

Ben Ardery
Louise Brown
Lucinda Wilson
Mary D. Everman
Bruce Miller
Ellis Hukill
Reva Hill
Patsy Harney
Helen Watson
Betty Jane Lawrence
Martha Stewart
Mattie Eades

CLASS OF '51

Ada Linville
Ann Royse
Louis Herzog
Nancy Greenup
Evelyn Johnson
Dudley Boyle
Ruby Ann Arnsperger
Barbara Jordan
Wilma Turner
Harold Myers

SENIOR ORANGE AND BLACK MEMBERS

Bernice Smart	3 years	Billy Gillespie	1 year	Betsy Dodge	1 year
Nancy Lu Hudson	3 years	Annelle Miller	1 year	Mona Lawhorn	1 year
Ralph Vogler	3 years	George Doyle	1 year	Martha Ruggles	1 year



JUNIOR HIGH FOOTBALL TEAM

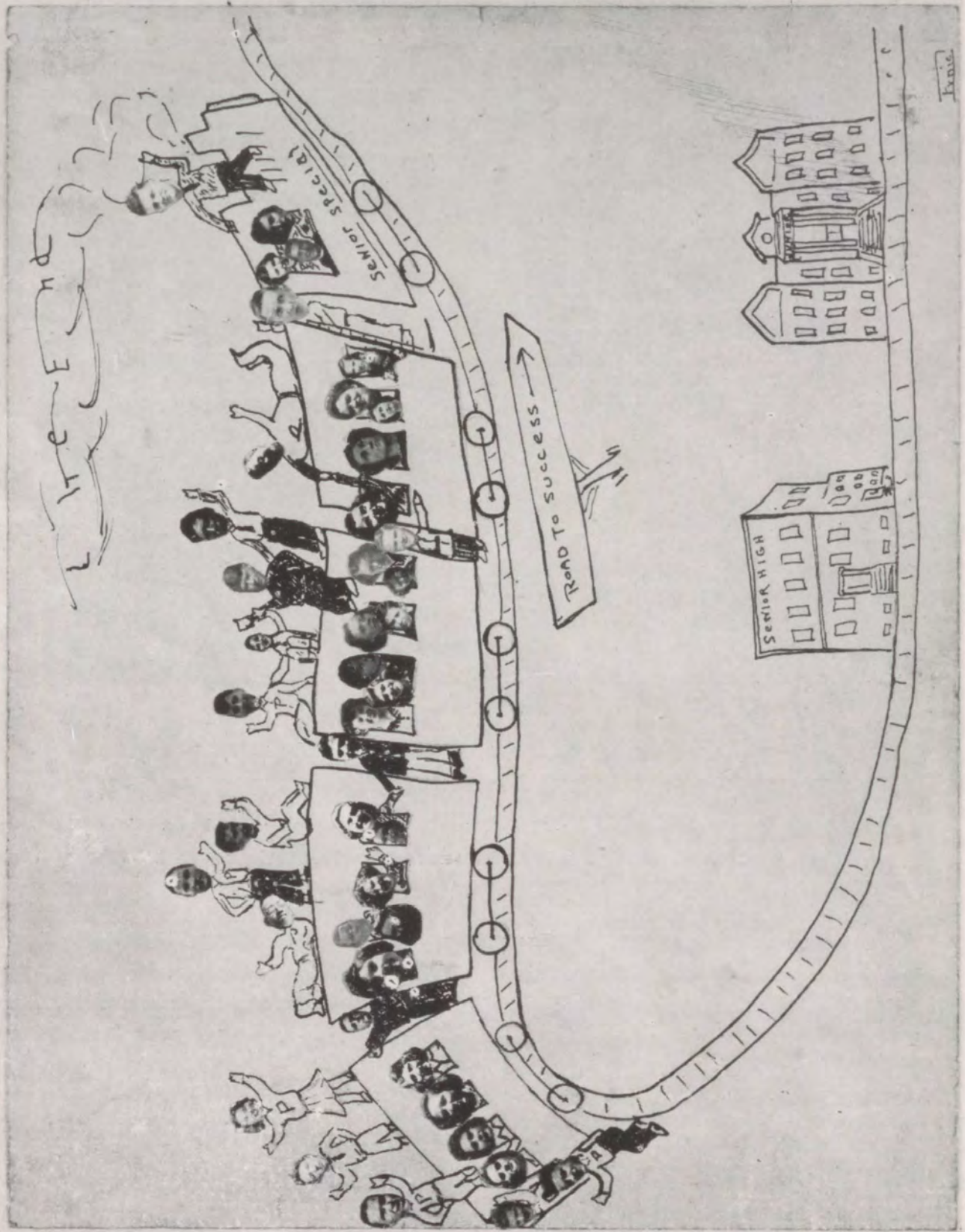
The Junior High football squad had only three games the past season, but were successful in winning two out of three. Playing the Georgetown Juniors here for the first week, the Thoroughbreds won 7 to 6 but at Georgetown the next week, the tables were turned as Georgetown took a 35 to 7 verdict. The last game was with M.M.I. and the Junior High squad beat them 14 to 7 to wind up their first season with Mr. Barr. Members of the team were Tommy Sherlock, Tommy Thompson, Nelson Sadler, Claude Vaughn, Eugene Maxwell, Larry Hennessey, Eugene Cain, Robert Holleran, Kelly Smith, Roy Parker, W. G. Florence, Billy Wilson, Bill Eads, Price Huston, John Ballard, Harry B. Smart, Joe Singleton, Glenn Wagoner, Billy Hall, Bruce Miller, Reville Goss, Carl Wigglesworth, Eddie Wells, Tommy Mitchell, David Feld, and Harl Crump, manager.



JUNIOR HIGH BASKETBALL TEAM

Coach Dan Barr's first basketball season at Paris turned out as a very successful one. The Thoroughbreds were again one of the top Junior High Basketball teams of Central Kentucky, registering 21 wins against 6 losses.

The members of the team are: Billy Hall, Bruce Miller, Eugene Cain, W. G. Florence, Price Huston, Douglas Lawhorn, Lee Shrout, Eddie Wells, Tommy Sherlock, Kelly Smith, James Prather, Joe Singleton, Robert Jordan, Earl Waugh, Glenn Wagoner, Junius Cooper, and managers: J. W. Crump, Harl Crump, and Tommy Mitchell.



PATRONIZE OUR ADVERTISERS

Compliments

OF

VOGLER DRUG CO.

"THE REXALL STORE"

Paris, Kentucky

Compliments

OF

CITY CLUB

"WHERE GOOD FELLOWS MEET"

Sheeler Lumber Co.

"Tools Build Together"

500

PHONES

300

Farmers Tobacco Warehouse

"We Sell Tobacco Higher Than Any Other
Place In The Country"

EAST MAIN

PARIS, KY.

Compliments Of

Roxie Davis Post

Clubroom - - - - 226 Main

PARIS, KY.

Good Luck—Seniors

J. J. Newberry Co.

Incorporated

Known For Better Values

Lerman Bros.

Cash Department Store

PARIS

— KY.



Compliments Of

J. C. Penney Co.

"Where A Nation Shops
And Saves"

Paris Monument Works

16th and Main

QUALITY ALWAYS

DAY 78 — PHONES — NIGHT 175

Fred W. Hilke

Paris, Ky.

Compliments Of

William Brophy

Compliments Of

Bourbon Lumber Co.

Incorporated

A. B. HANCOCK, President

Compliments Of

Hansley Mills

Incorporated

Bobbitt and Hudson

Home Appliances — Coal —
Feed — Machinery

1500 MAIN

PARIS, KY.

SALES



SERVICES

PIPES CHEVROLET

"Best In Every Way"

PHONE 532

MAIN ST.

A Good School—

A Good Student Body—

A Good Jeweler—

The A. J. WINTERS CO.

Compliments Of

Pennington's "HONEY" Bread

ADRIAN CANNON, Agent

PARIS, KY.

Compliments Of

ARDERY'S DRUGS

Students Please BEHAVE

PHONE 50

Cor. 7th & MAIN

BOW'S SERVICE STATION

Sydney Bow & Sons, Props.

STANDARD OIL PRODUCTS

Cor. Ninth and Main Streets

PHONE 657

PARIS, KY.

PHONE 9164

722 MAIN

CAYWOOD'S CAFE

New Location

Next Door To Bourbon Locker

"HOME COOKED MEALS"

Compliments Of

COLONIAL MILK PRODUCTS

TWIN LAKES FARM

JOHN M. STUART

Compliments Of

LITER'S MARKET

Compliments Of

KENTUCKY UTILITIES CO.
Incorporated

WOLLSTEIN'S

"Everything In Men and Boy's Wear"

PHONE 40

PARIS, KY.

**SANTEN'S HOME APPLIANCE
SHOP, Inc.**

Sporting Goods Store

415 MAIN

PHONE 46

C. R. CRAYCRAFT

Decorator

PAINT AND WALLPAPER

Phone 321

JOHN MERRINGER

PLUMBING and HEATING

"Lauderall" Automatic Home Laundry

"Deepfreeze" Home Freezers

Phone 251

Compliments Of

E. F. PRICHARD

Compliments Of

MONSON'S CREAMERY

BABY CHICKS

FEEDS

Compliments Of

FORD & CO.

"4 7"

Compliments Of

WHEELER FURNITURE CO.

Incorporated

530 Main

PARIS

302 Main

PARIS BAKING CO.

GROCERIES & MEATS

Phone 376

We Deliver

F. C. JOHNSTON — WELDING

and

MACHINE SHOP

Compliments Of

GOREY INSURANCE AGENCY

"It Pays To Be Insured"

WOODFORD SPEARS & SONS

KENTUCKY BLUE GRASS SEED

OVERBY'S FOOD EXCHANGE

and GIFT SHOP

Home Made Pastries and Salads

GIFTS FOR ALL OCCASIONS

SPIKE'S CONFECTIONERY

Tasty Sandwiches

Soft Drinks

REUBEN ARNSPARGER, Prop.

WILSON BROS.

HARDWARE, IMPLEMENTS
ELECTRICAL APPLIANCES

HOTEL BALDWIN

"Paris' Meeting and Social Center"

Compliments Of

BOURBON HATCHERY

BABY CHICKS

FEED

PARIS MACHINE WORKS

C. W. JOHNSON, Prop.

Compliments Of

W. G. MITCHELL

BROADWAY GROCERY

MEATS, FRUITS & VEGETABLES

Shop With Us And Save

Phone 551-W

K. W. LARKIN

INSURANCE

AUTOMOBILE & FIRE

Phone 936 or 444

FURNITURE — STOVES — RUGS

DORSEY FURNITURE CO.

WE DELIVER

318 Main

Phone 36

Congratulations

BRADLEY - BLANTON

J. K. GREER

Jeweler - Optometrist

GIFTS

604 Main Street

Compliments Of

JAMES, JOE GOODMAN
NORMAN VIOLETT

SHOE REPAIR SHOP

WORICK BROS.

DODGE — PLYMOUTH

Night Service

Phone 307

MAIN STREET MARKET

J. T. Tate & Sons

GROCERIES and FRESH MEATS

Phone 16

We Deliver

BUICK

INTERNATIONAL TRUCKS

PARIS GARAGE

Insko Bros, Owners

Phone 566

4th & Pleasant

STRICKLER FURNITURE CO.

Kentucky's Finest Upholsterers

H. L. Strickler, Manager

Paris, Kentucky

Compliments Of

GRINNELL DRY CLEANING

622 Main

Phone 793

Paris Ky.

MOORE'S SERVICE STATION

PURE OIL PRODUCTS

GENERAL TIRES

DAUGHERTY PAINT & SUPPLY

**WALLPAPER, SPORTING GOODS
AND RECORDS**

434 Main

Paris, Ky.

Phone 231

"If It Comes From Davis—It Is Right"

J. W. DAVIS & CO.

GOOD CLOTHING ALWAYS

Est. 1866

Phone 288

SHIRE & FITHIAN

The House Of Quality

For

JEWELRY AND GIFTS

Phone 502

Phone 637

C. O. WILMOTH

REAL ESTATE

2nd Floor Bourbon Bank Building

Compliments Of

BOURBON LOCKER PLANT

Compliments Of

NEALE'S PASTRY SHOPPE

Compliments Of

BEN COHEN SHOE STORE

Main Street

CHAS. P. COOK & CO.

Ferndell, Frosted, and S. & W. Foods

PHONES 206-207

ELLIS JEWELERS, INC.

QUALITY DIAMONDS

NATIONALLY ADVERTISED WATCHES

714 Main

Phone 641

Paris, Ky.

BELL & COURTNEY

SHELL SERVICE

Lee Tires

Wheel Balancing

Battery Charging

8th & SYCAMORE

R. L. FILER AUTO BODY SHOP

PHONE 1050

"We Take The Dents Out Of Accidents"

AUTO PAINTING, UPHOLSTERING
AND BODY SERVICE

130 W. Eighth St.

Paris, Ky.

Phone 1378

809 Main

PARIS GRILL

CECIL MYERS, Prop.

LUNCHES

— STEAKS

JACK COHAN & SONS

705 MAIN ST.

PARIS, KY.

Compliments Of

SCHINE'S THEATRE

G. S. VARDEN & SON

Prescription Druggists

Since 1884

PARIS,

KENTUCKY

BOURBON LAUNDRY

& DRY CLEANERS

PHONE 4

PARIS, KY.

DAVIS FUNERAL HOME

SINCE 1848

**WESTERN
AUTO ASSOCIATE STORE**

EDWIN KIRKPATRICK, Owner

GUARANTEED MERCHANDISE

Paris, Ky.

Telephone 871

HOME OWNED

HICKS & ROSS MACHINE SHOP

WELDING

REPAIRING OF ALL FARM MACHINERY

146 W. 8th St.

Paris, Ky.

Telephone 659

GILBERT LYTLE

MEATS — GROCERIES

COR. 10th & MAIN

PHONE 20

BEST WISHES

SAMUEL MILNER

Compliments Of

SHIREL WILLS

Compliments Of

MATILDA THOMPSON

and

GEORGE DUNDON

CITY

Compliments Of

Wm. HOLLAR

BURRIS MARKET

310 W. 8th St.

PHONE 43

Compliments Of

H. T. BROWN

GENERAL MERCHANDISE

Compliments Of

H. B. RAKES

BEST WISHES SENIOR CLASS

RAYMOND CONNELL

Compliments Of

JOE ALLEN

FOOKES' GROCERY

GROCERIES — SELECT MEATS
FRESH FRUITS & VEGETABLES

Phone 1372

400 W. 2nd St.

PARIS, KY

BLUE GRASS SERVICE STATION

ASHLAND GASOLINE AND OILS

E. Main Street

Phone 301

SANTEN'S GROCERY

138 West 8th Street

PHONE 229

WE DELIVER

**PARIS LAUNDRY
AND DRY CLEANERS**

PHONE 76

815 MAIN

PARIS AUTOBODY WORKS

Wreck Rebuilding — Painting
Alignment Service

106 E. 10th St.

PARIS, KY.

Compliments Of

STONER INN

"OLE NATH"

**HINTON - TURNER
FUNERAL HOME**

CALL US WITH CONFIDENCE

ELAM SERVICE STATION

Golden Tip, Silver Tip Gasolines
Viscowl Motor Oil — Tires, Tubes
Accessories

10th & Pleasant St.

Par's, Ky.

Compliments Of

BENTON BEAUTY SALON

PHONE 771

LINCOLN FORD MERCURY

BRIGGS MOTOR CO., INC.

8th & High Sts.

PARIS, KY.

Compliments Of

HUSTON - DOYLE

PLUMBING — HEATING

Phone 498

Par's, Ky.

HALL'S MARKET

(COLLINS HALL, Prop.)

GROCERIES — MEATS — FRUITS
VEGETABLES

Phone 442

E. F. BLAKE

GROCERIES & MEATS

Baby Beef Our Specialty
"Rush Delivery Service"

299 Lilleston Ave.

Phone 247

Compliments Of

TED DAVIS SHOP

KELLY WILLS MARKET

GROCERIES & FRESH MEATS

Phone 93

Paris, Ky.

KERR & DOWNING

TEXACO SERVICE STATION

FISK TIRES

11th & Main

Phone 815

BOND CLEANERS

Phone 236

10th & Main

In Paris

IT'S NEALE'S

For Meals

10th & Pleasant

**BOURBON HARDWARE
& IMPLEMENT CO.**

420 Main

Paris, Ky.

Compliments Of

MI-LADY BEAUTY SALON

PHONE 448

**DRINK NESBITT'S
CALIFORNIA ORANGE**

MADE FROM

REAL ORANGES

SMITS GREENHOUSE

FINE FLOWERS

EXPERTLY ARRANGED

Phone 915

West Second St.

RAY & REESE

DE SOTO — PLYMOUTH
GMC TRUCKS

115 W. 8th St.

Paris, Ky.

Compliments Of

L. H. JAMES

MAIN STREET POOL ROOM

"Specialized In Hamburgers"

POOL

— BOWLING

THE SUNSHINE CLUB

W. Woodford President

R. Cohan V. President

R. Lowry Secretary

R. Biddle Treasurer

Compliments Of

E. K. RICE

Compliments Of

BRENT & COMPANY

Compliments Of

PARIS DAILY ENTERPRISE

Compliments Of

A FRIEND

Compliments Of

AETNA OIL COMPANY

THOMAS PRATHER, Agent

Pictures In Annual Taken By

Thomas & Huston, Photographers

Lexington, Ky.

Business Friends and Patrons

BOURBON PRODUCE CO.

SEARS ORDER OFFICE

PARIS AUTO SUPPLY

MODEL DRESS SHOP

SWEET SHOP

WOMAN'S EXCHANGE & GIFT SHOP

LUCIEN M. ARNSPARGER — Insurance

MRS. SPILLMAN BEAUTY PARLOR

STANLEY PRICE

SANITARY BARBER SHOP

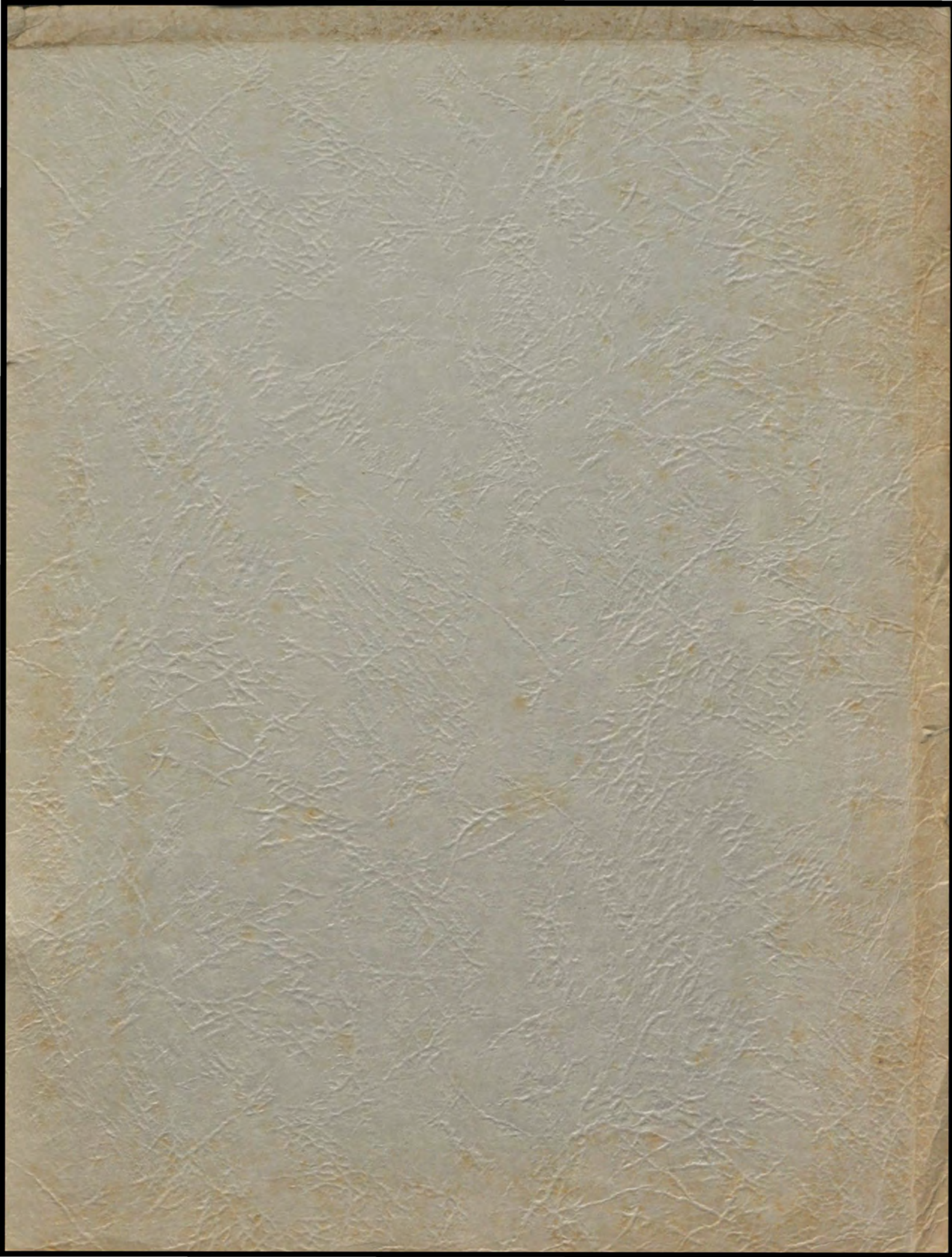
LOGAN HOWARD

THE PARISIAN

AUTOGRAPHS

THE PARISIAN

AUTOGRAPHS



Printed By The
PARIS DAILY ENTERPRISE
Paris, Ky.